



# Ministry of Health and Sports (Myanmar)

## Department of Public Health

### Central Epidemiology Unit

(15 July 2020)

Situation Report - 99

### Coronavirus Disease 2019 (COVID-19)

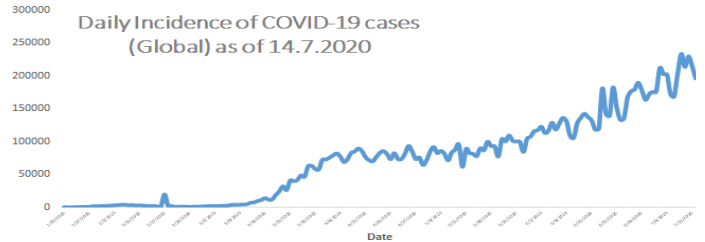
Data as reported by States and Regions by 11:30 PM MST 14 July 2020

**Global Situation (WHO situation report - 176) data as of 14:30 MST 14 July 2020**

**Confirmed cases**  
**12,964,809**

**Deaths**  
**570,288**

**Case Fatality Rate**  
**4.3 %**



### Myanmar Situation

Total Tested

**96,324**

Confirmed Cases

**337**

Negative

**95,987**

Recovered

**266**

78.9% of Confirmed cases

Active

**65**

19.2% of Confirmed cases

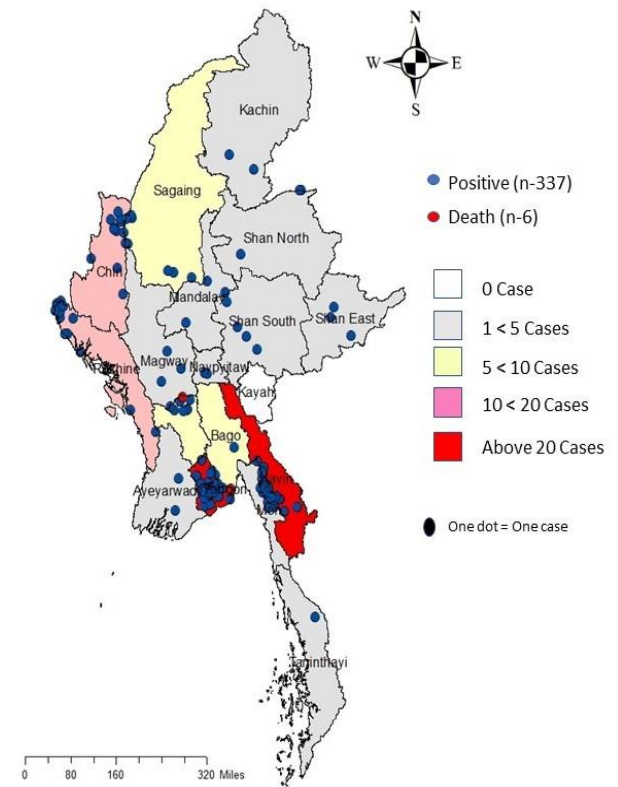
Death

**6**

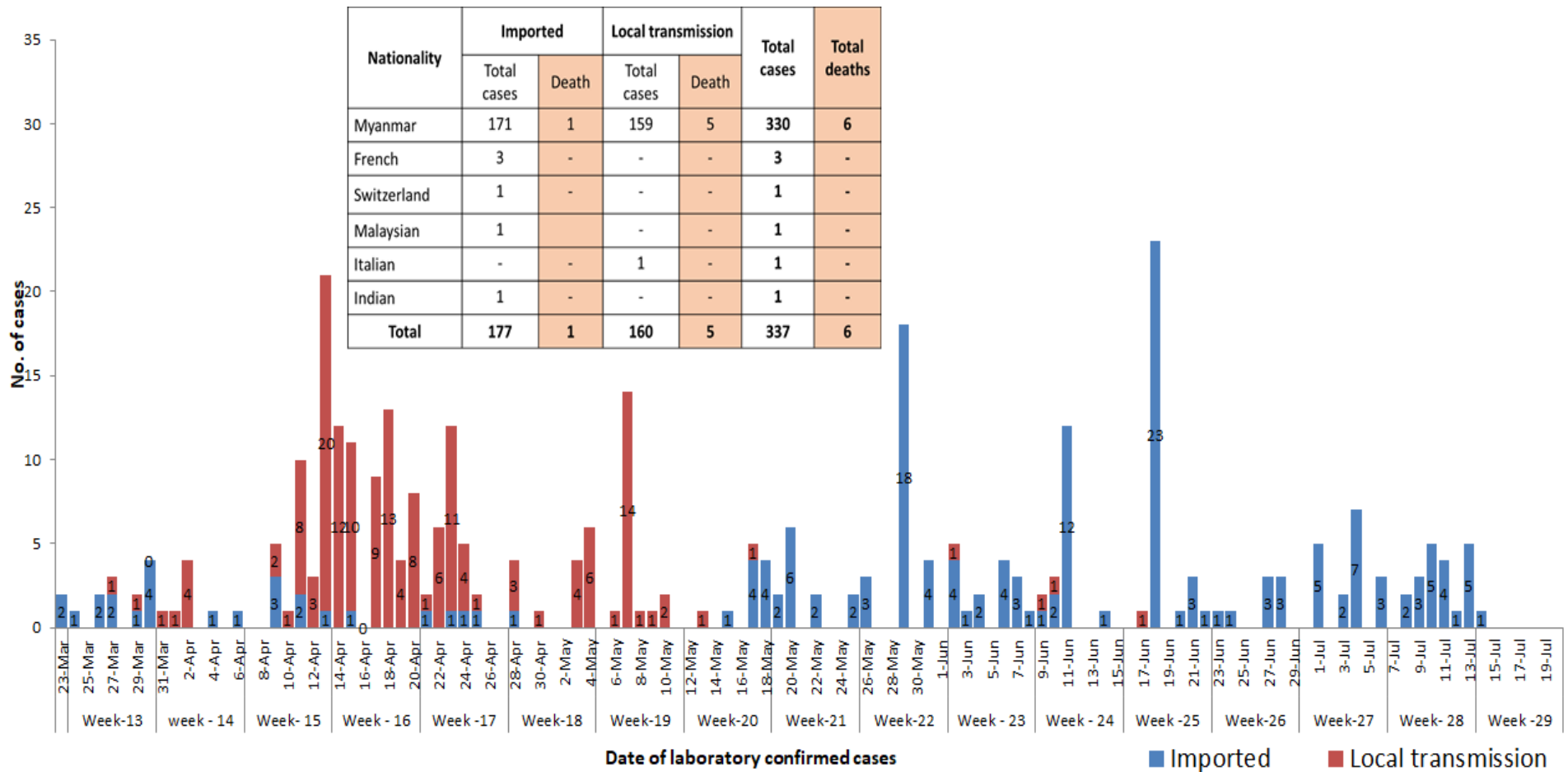
1.7% of Confirmed cases

No	State/Region	COVID –19 Confirmed case	Recovered	Deaths
1	Yangon	243(1 New)	182(2 New)	5
2	Kayin	26	23(2 New)	-
3	Rakhine	14	10	-
4	Chin	11	10	-
5	Sagaing	9	8	-
6	Bago	9	8(1 New)	1
7	Shan (South)	4	4	-
8	Mandalay	3	3	-
9	Shan (East)	3	3	-
10	Shan (North)	3	3	-
11	Magway	3	3	-
12	Naypyitaw	2	2	-
13	Ayeyarwaddy	2	2	-
14	Kachin	2	2	-
15	Mon	2	2	-
16	Thanintharyi	1	1	-
17	Kayah	-	-	-
<b>Total</b>		<b>337(1 New)</b>	<b>266(5 New)</b>	<b>6</b>

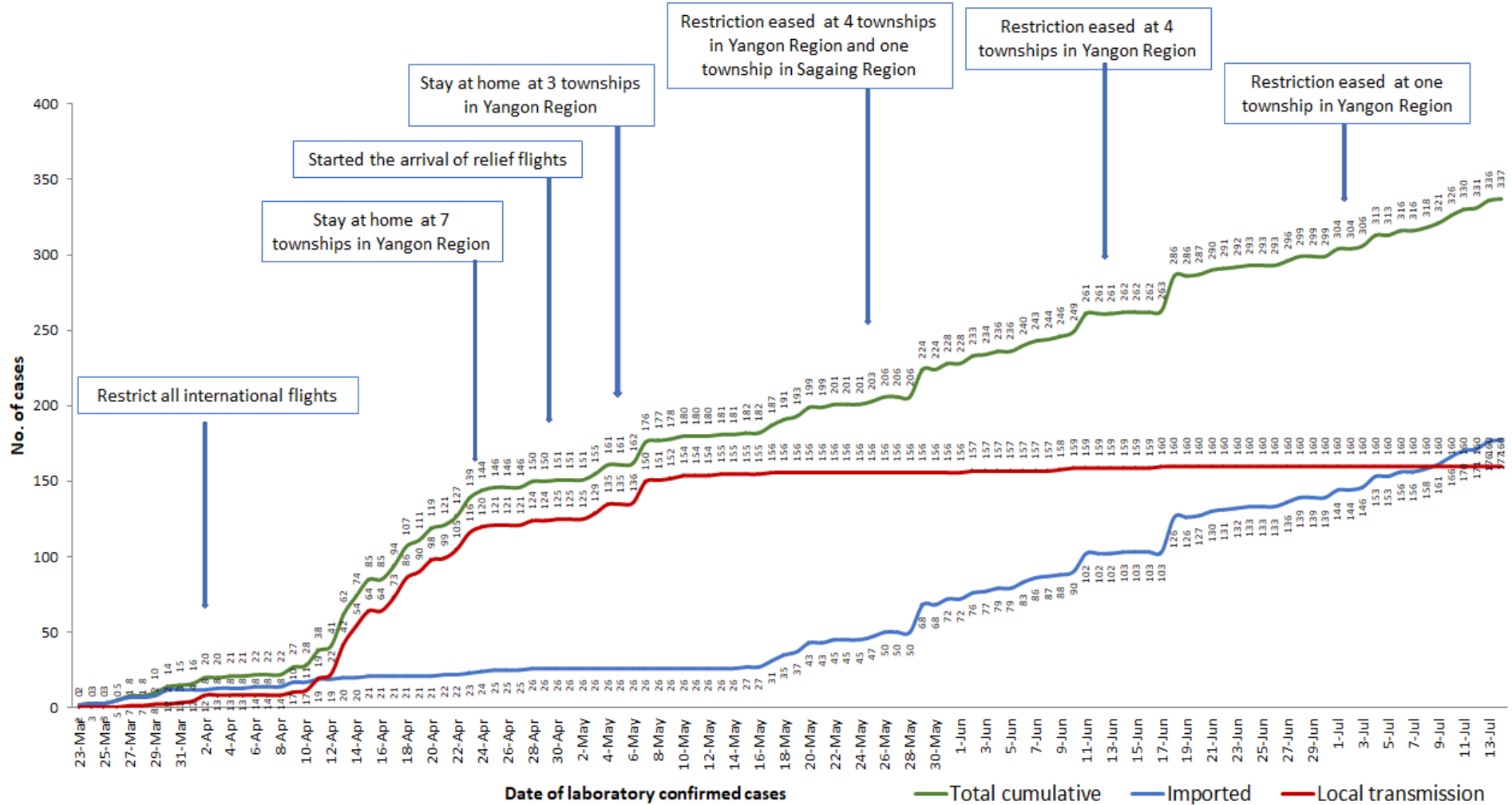
Map showing COVID-19 laboratory confirmed cases



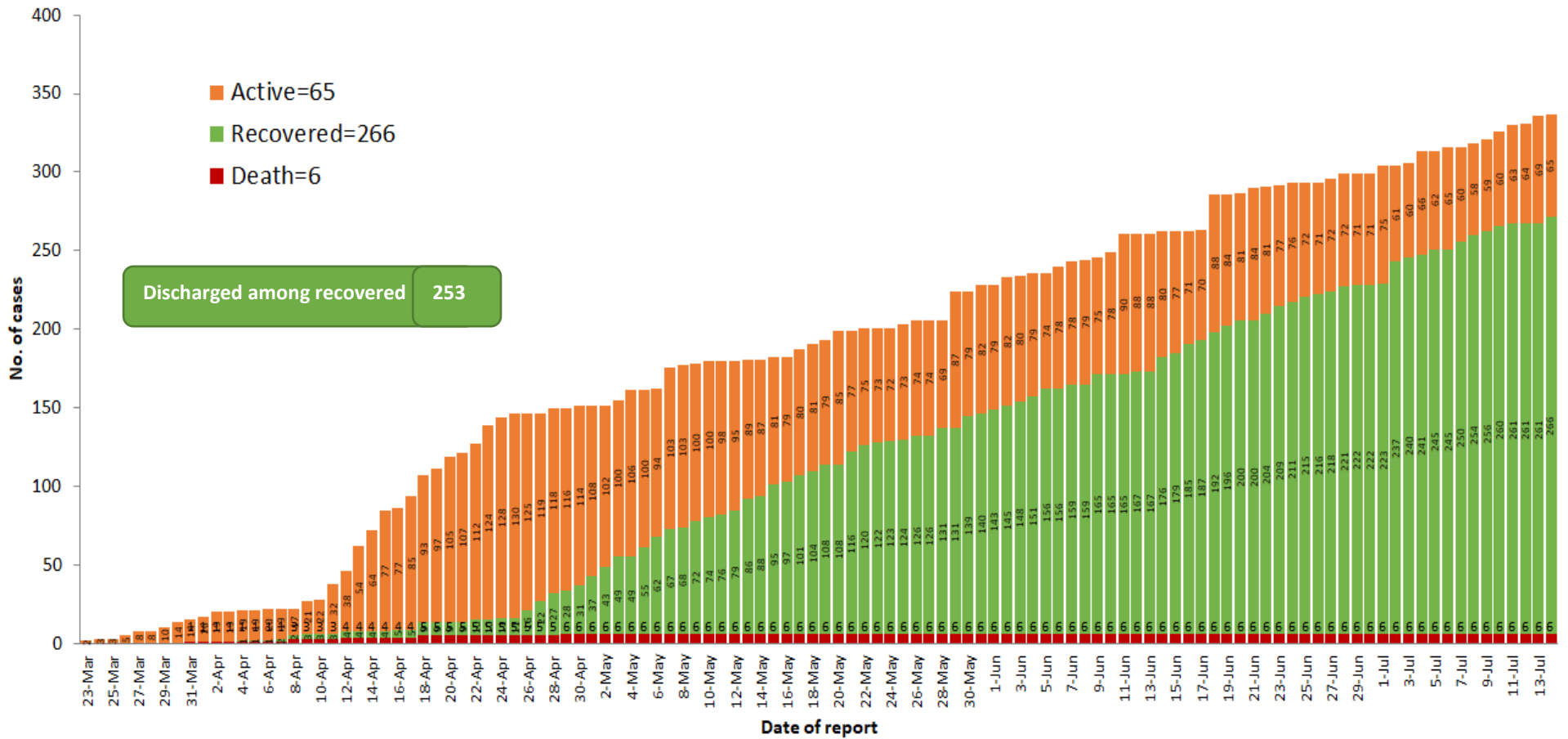
# COVID-19 confirmed cases by types of transmissions (as of 14.7.2020, 11:30 pm) n=337



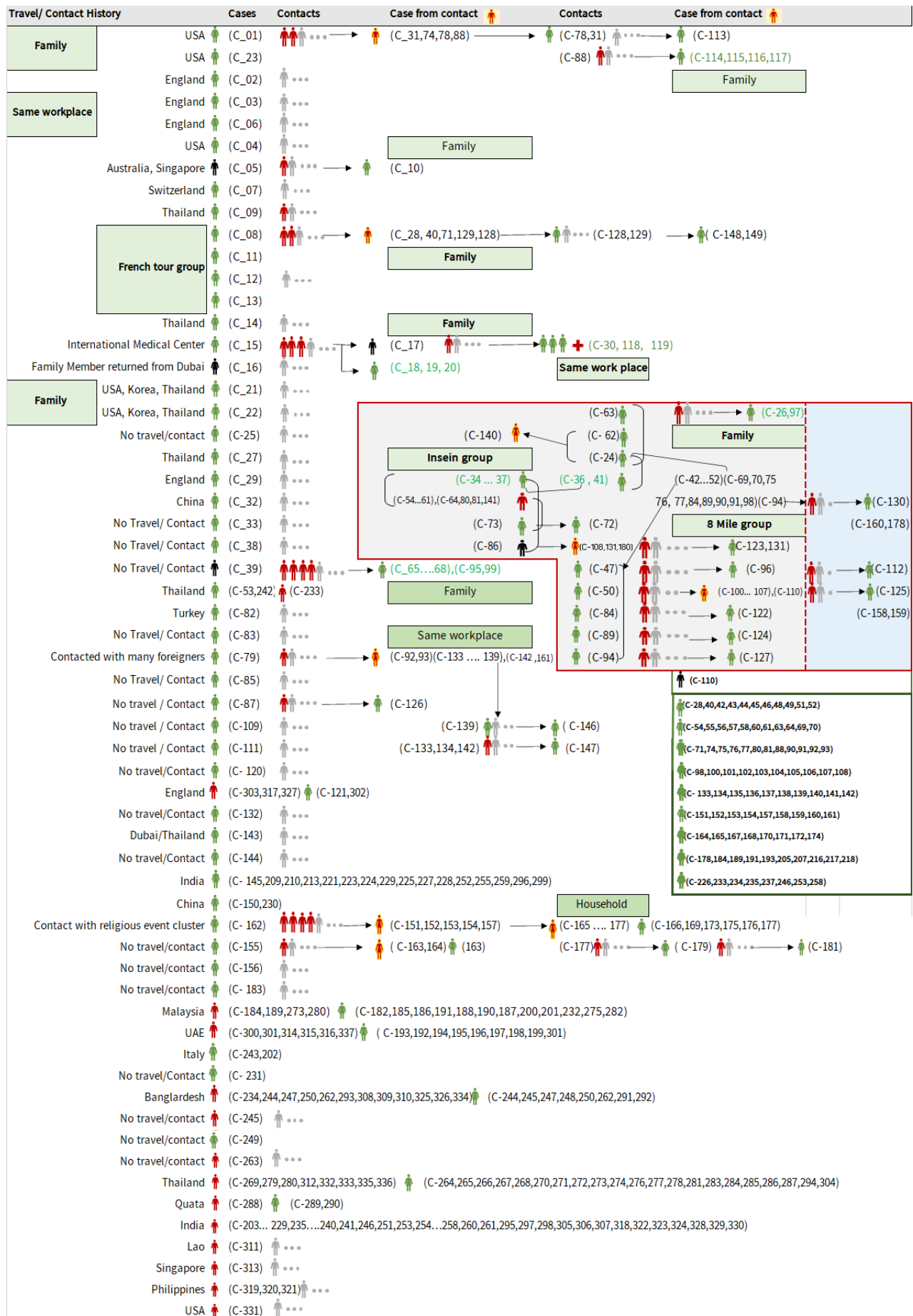
# Total laboratory confirmed cases by date (as of 14.7.2020, 11:30 pm), n= 337



## Cumulative Number of active confirmed cases, recovered and deaths (23.3.2020 – 14.7.2020), n (cumulative)=337



# Summary of COVID-19 confirmed cases (as of 14.7.2020), n (contacts)= 5,718



Summary of current situation		
Type	New (13.7.2020-14.7.2020)	Total (on 14.7.2020)
Suspected and Person Under Investigation (PUI)	29	178
Hospital Quarantine	3	58
Facility Quarantine	1,525	23,797

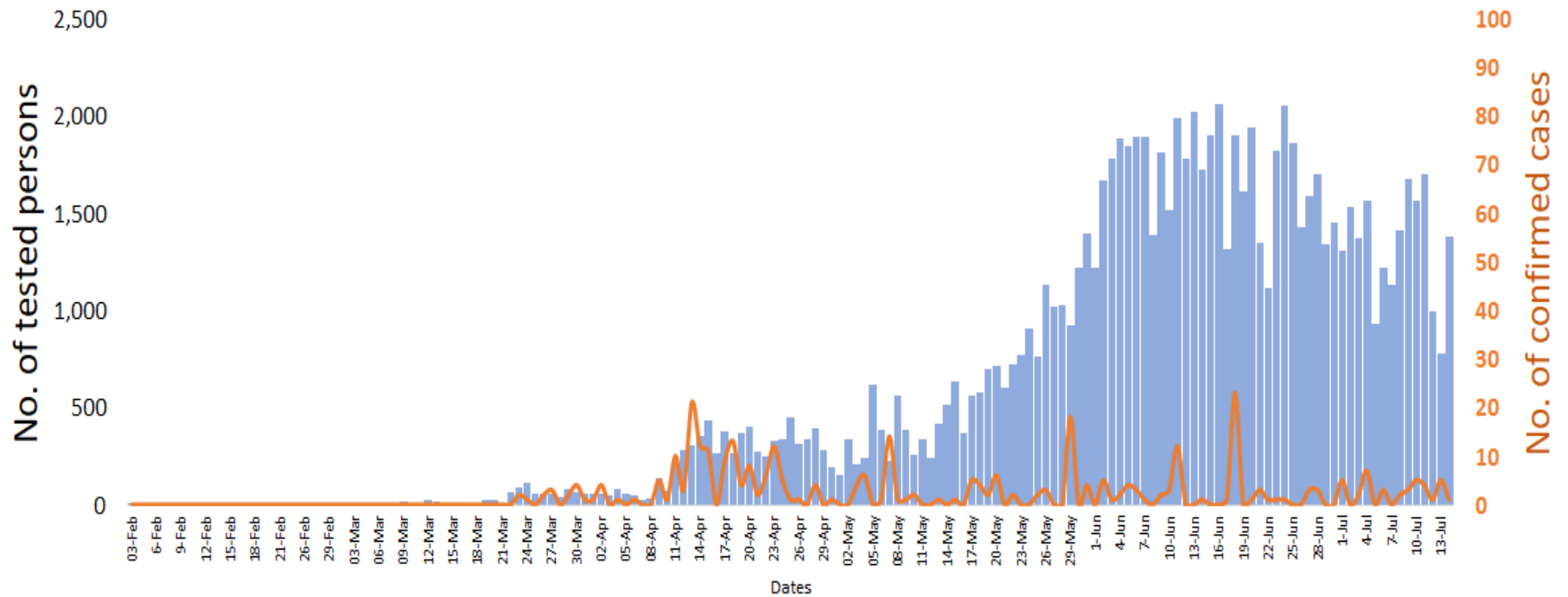
Person under Investigation (PUI) by State/Region hospitals (31.1.2020 – 14.7.2020) n= 6,400

No.	State/Region	PUI
1	Yangon	3,241
2	Mandalay	1,282
3	Kayin	264
4	Mon	252
5	Shan(N)	218
6	Magway	208
7	Bago	180
8	Shan ( E)	120
9	Ayeyarwaddy	102
10	Shan(S)	99
11	Sagaing	90
12	Kayah	80
13	Thanintharyi	70
14	Rakhine	68
15	Naypyitaw	63
16	Kachin	36
17	Chin	27
<b>Total</b>		6,400

No. of Facility Quarantine sites and Quarantined people on 14.7.2020

No.	State/Region	No. of facilities	Total no. of quarantine
1	Yangon	67	4,086
2	Bago	262	3,278
3	Kayin	318	2,887
4	Mon	266	2,641
5	Magway	333	2,138
6	Tanintharyi	189	1,471
7	Mandalay	103	1,262
8	Sagaing	207	1,248
9	Shan S	117	963
10	Rakhine	268	960
11	Kachin	419	954
12	Ayeyarwaddy	164	908
13	Naypyitaw	3	457
14	Chin	16	163
15	Shan North	317	159
16	Kayah	18	121
17	Shan East	11	101
<b>Total</b>		3,078	23,797

## COVID-19 confirmed cases among tested by date (as of 14.7.2020)



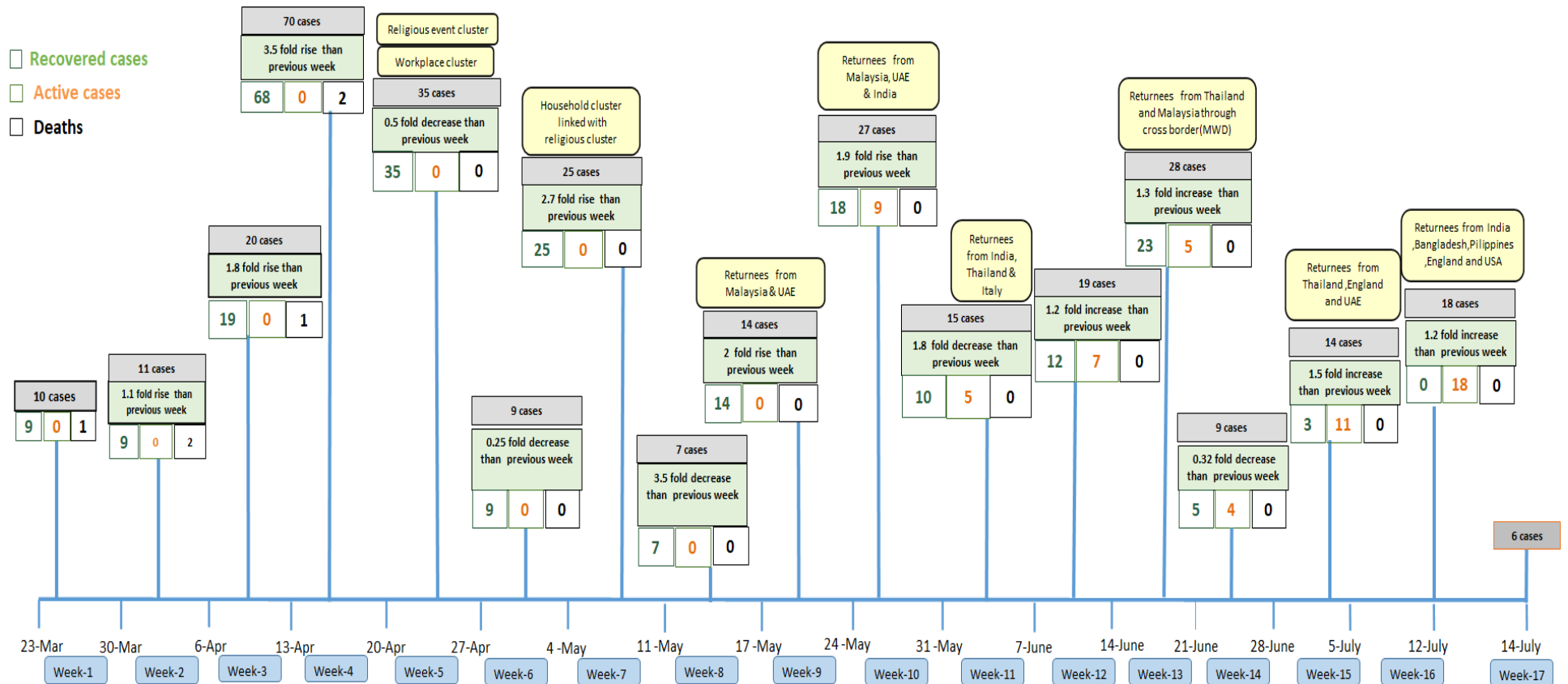
Total tested persons - 96,324

Total confirmed cases - 337

■ Tested person

— Confirmed case

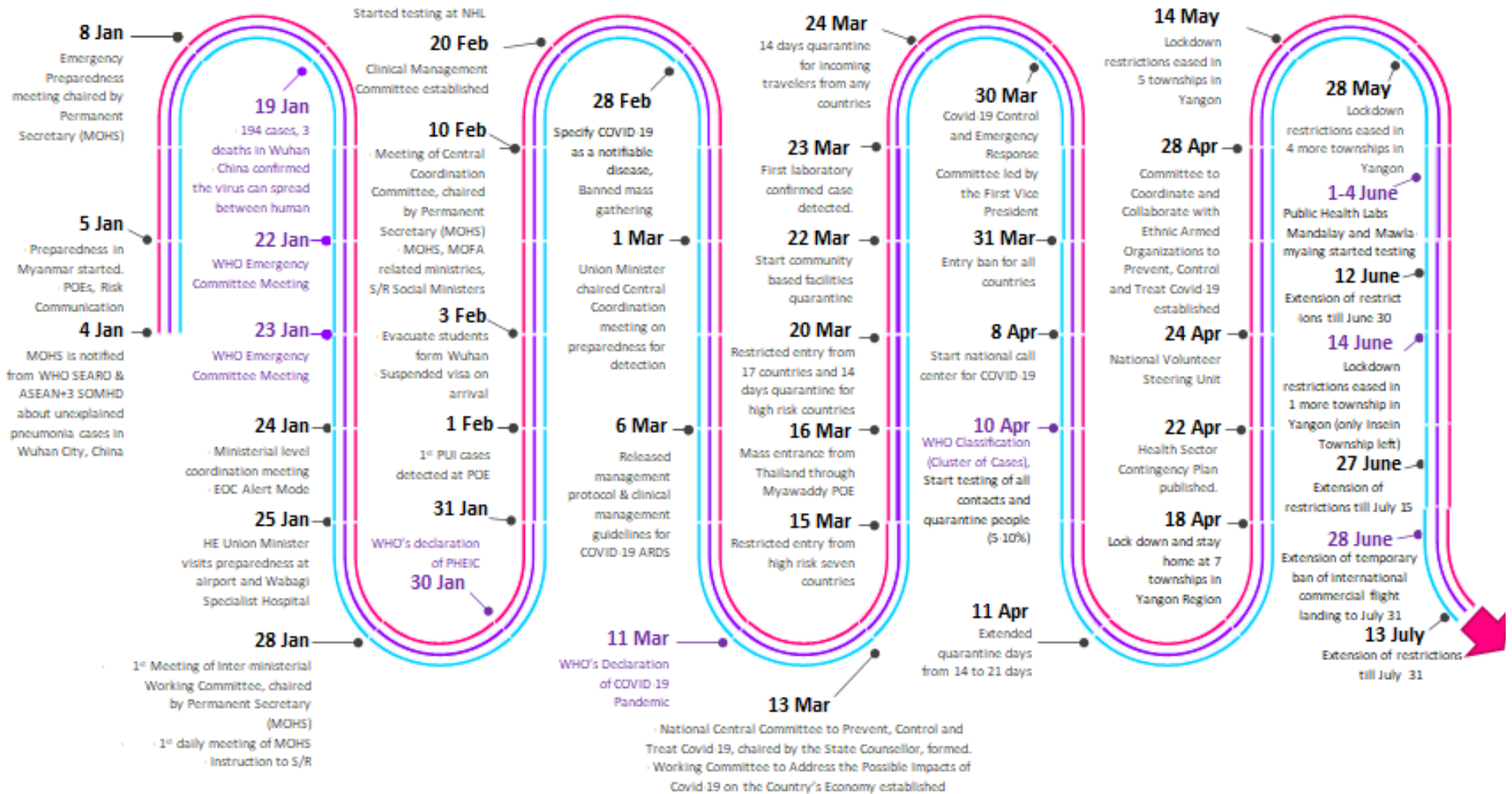
# Summary of new confirmed cases detection after first two cases (as of 14.7.2020)



- Confirmed cases were detected as a peak in the 4th week after first confirmed cases due to the religious event cluster.
- Confirmed cases were decreased but still raised than the first 3 weeks due to the religious event cluster and workplace cluster.
- There were an increased in numbers of cases in the 7th week after the first two cases due to the household cluster linked with a religious cluster.
- Confirmed cases were detected by a nearly two-fold rise in the 9th and 10th weeks after the first two cases because of returnees coming back by relief flights.



# Timeline of Preparedness and Response to COVID-19 in Myanmar (as of 14.7.2020)



Hotline Number— 0673 420 268

Data source - CEU, DMS, NHL, PHL (MDY and MLM), DMR, DSGH, State and Region Health Departments