



Ministry of Health and Sports (Myanmar)

Department of Public Health

Central Epidemiology Unit

(2 August 2020)

Coronavirus Disease 2019 (COVID-19)

Situation Report - 117

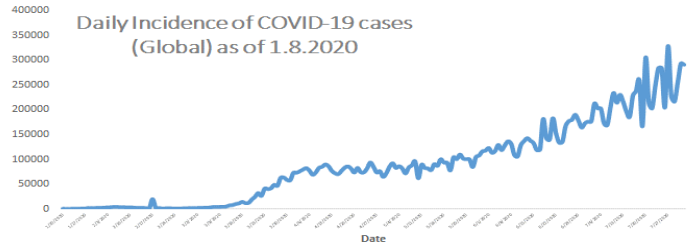
Data as reported by States and Regions by 5:00 AM MST 2 August 2020

Global Situation (WHO situation report - 194) data as of 14:30 MST 1 August 2020

Confirmed cases
17,396,943

Deaths
675,060

Case Fatality Rate
3.8 %



Myanmar Situation

Total Tested

118,127

Confirmed Cases

353

Negative

117,774

Recovered

298

84.4% of Confirmed cases

Active

49

13.8% of Confirmed cases

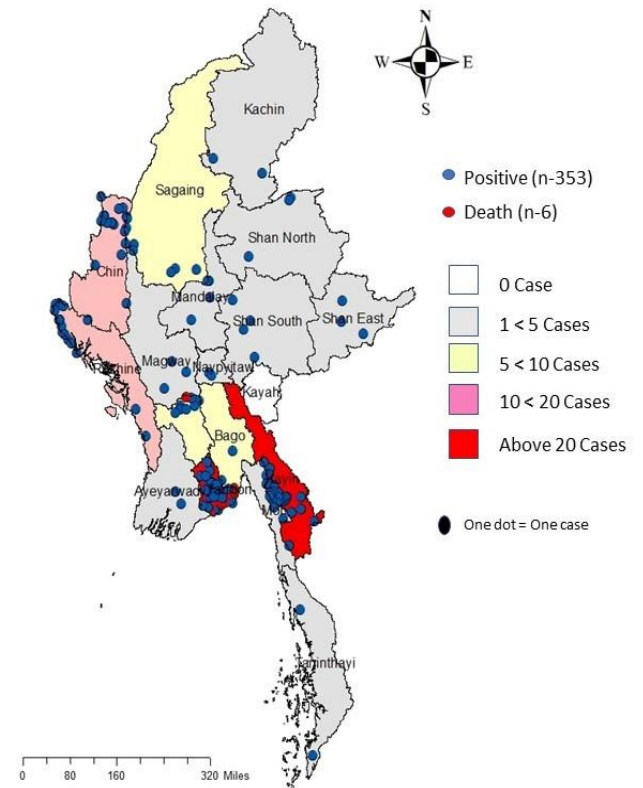
Death

6

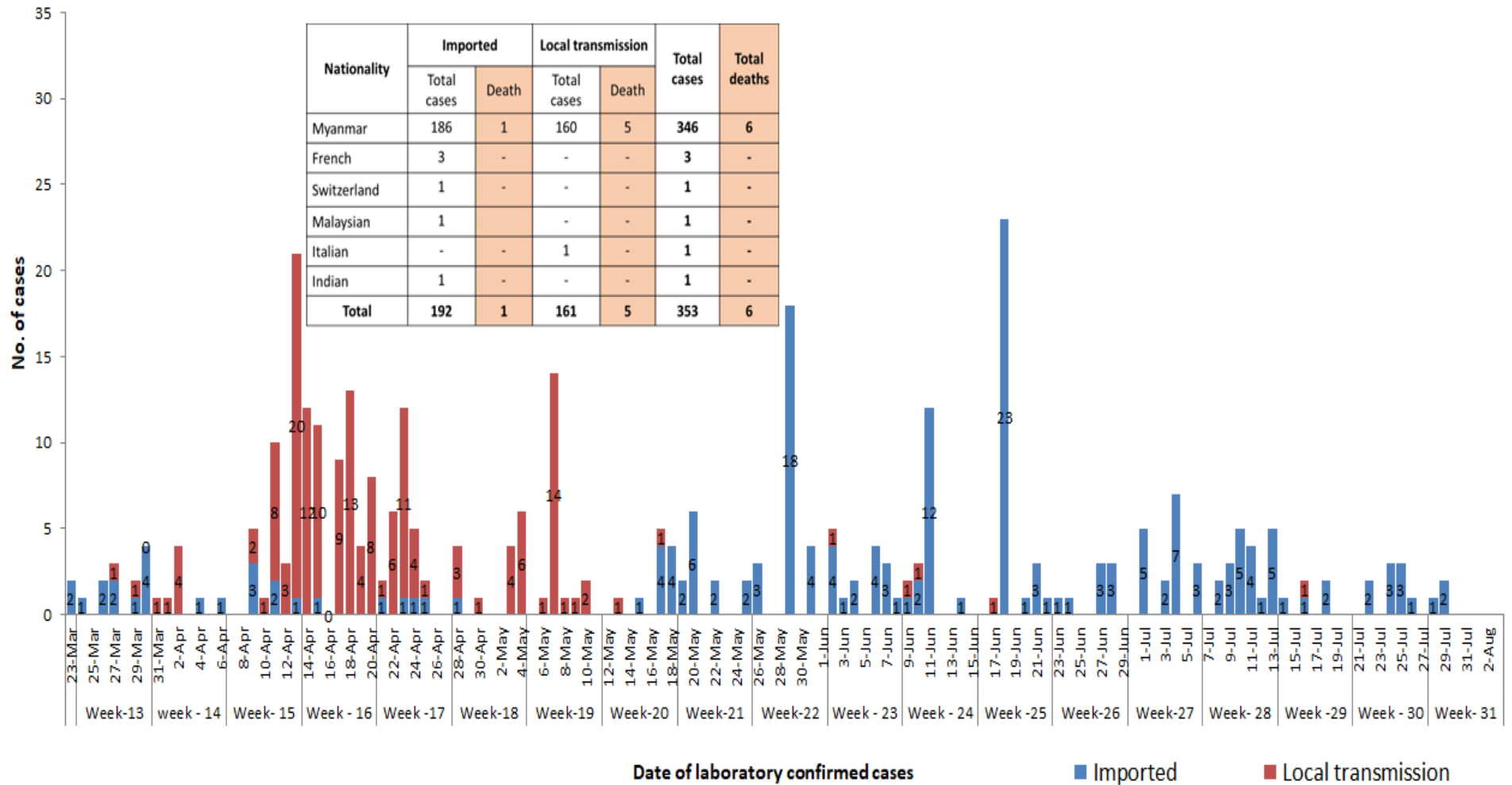
1.7% of Confirmed cases

No	State/Region	COVID –19 Confirmed case	Recovered	Deaths
1	Yangon	249	206(1 New)	5
2	Kayin	29	24	-
3	Rakhine	16	14	-
4	Chin	14	11	-
5	Sagaing	9	9	-
6	Bago	9	8	1
7	Shan (South)	4	4	-
8	Mandalay	4	4	-
9	Shan (East)	3	3	-
10	Shan (North)	3	3	-
11	Magway	3	3	-
12	Naypyitaw	2	2	-
13	Ayeyarwaddy	2	2	-
14	Kachin	2	2	-
15	Mon	2	2	-
16	Thanintharyi	2	1	-
17	Kayah	-	-	-
Total		353	298(1 New)	6

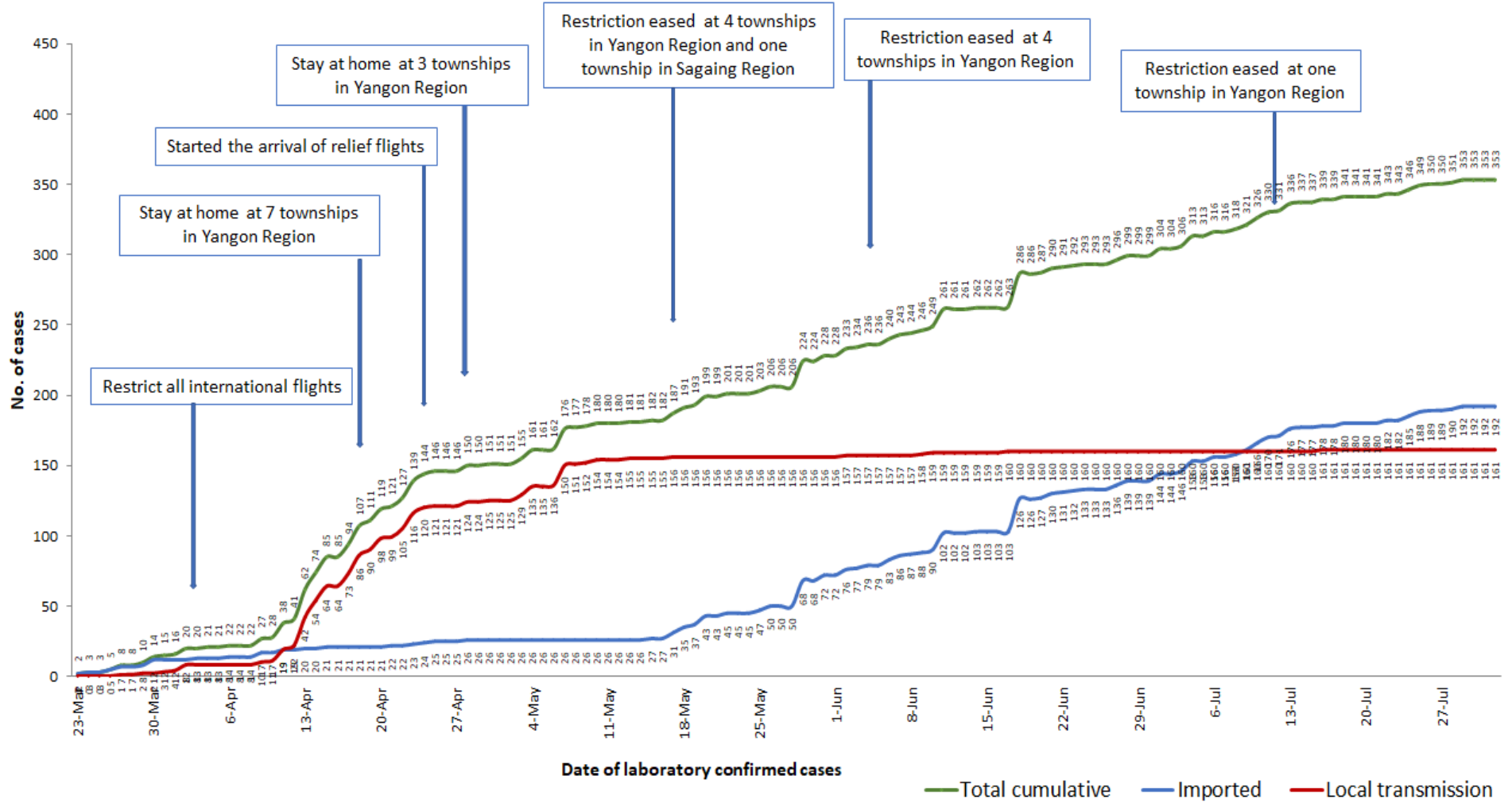
Map showing COVID-19 laboratory confirmed cases



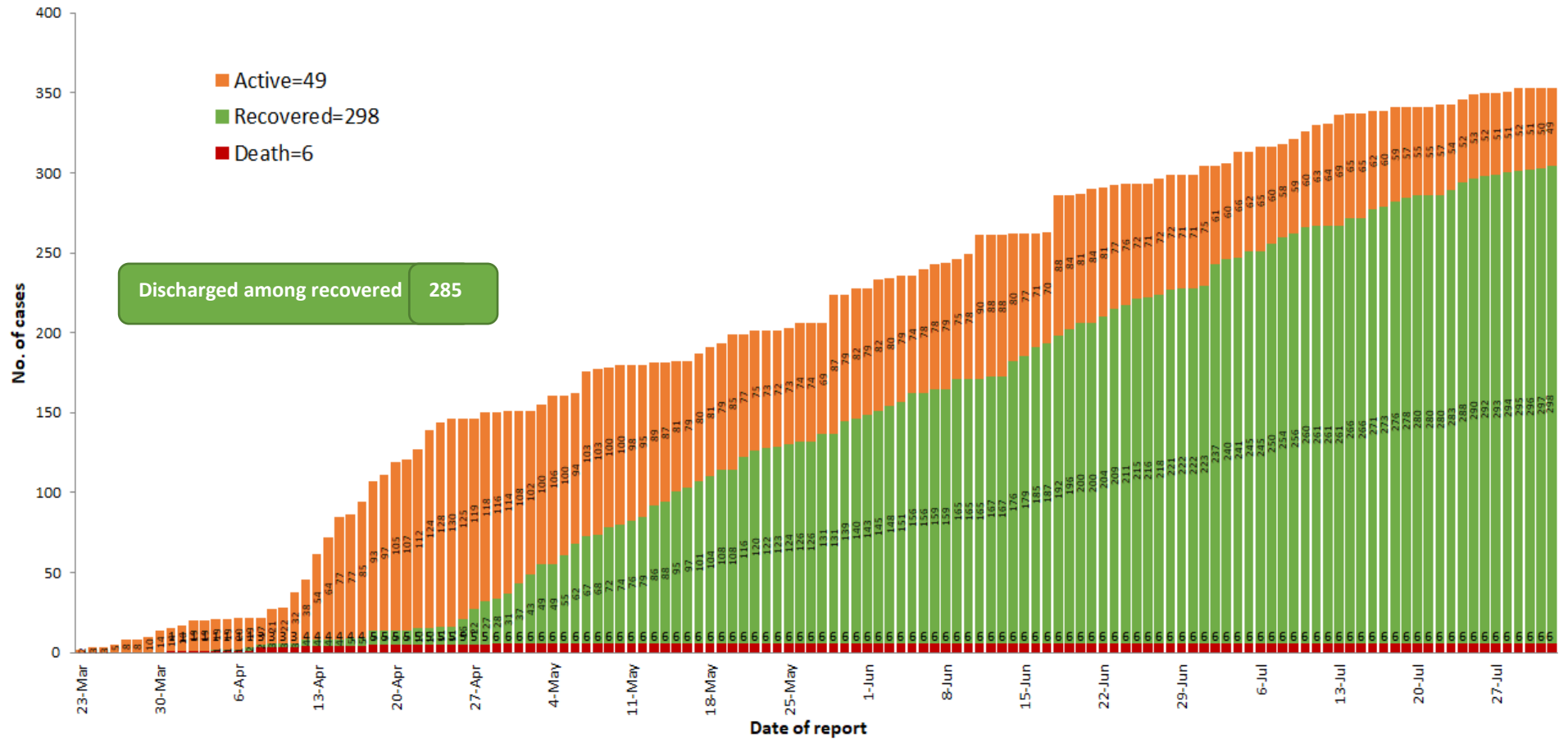
COVID-19 confirmed cases by types of transmissions (as of 2.8.2020, 5:00 am) n=353



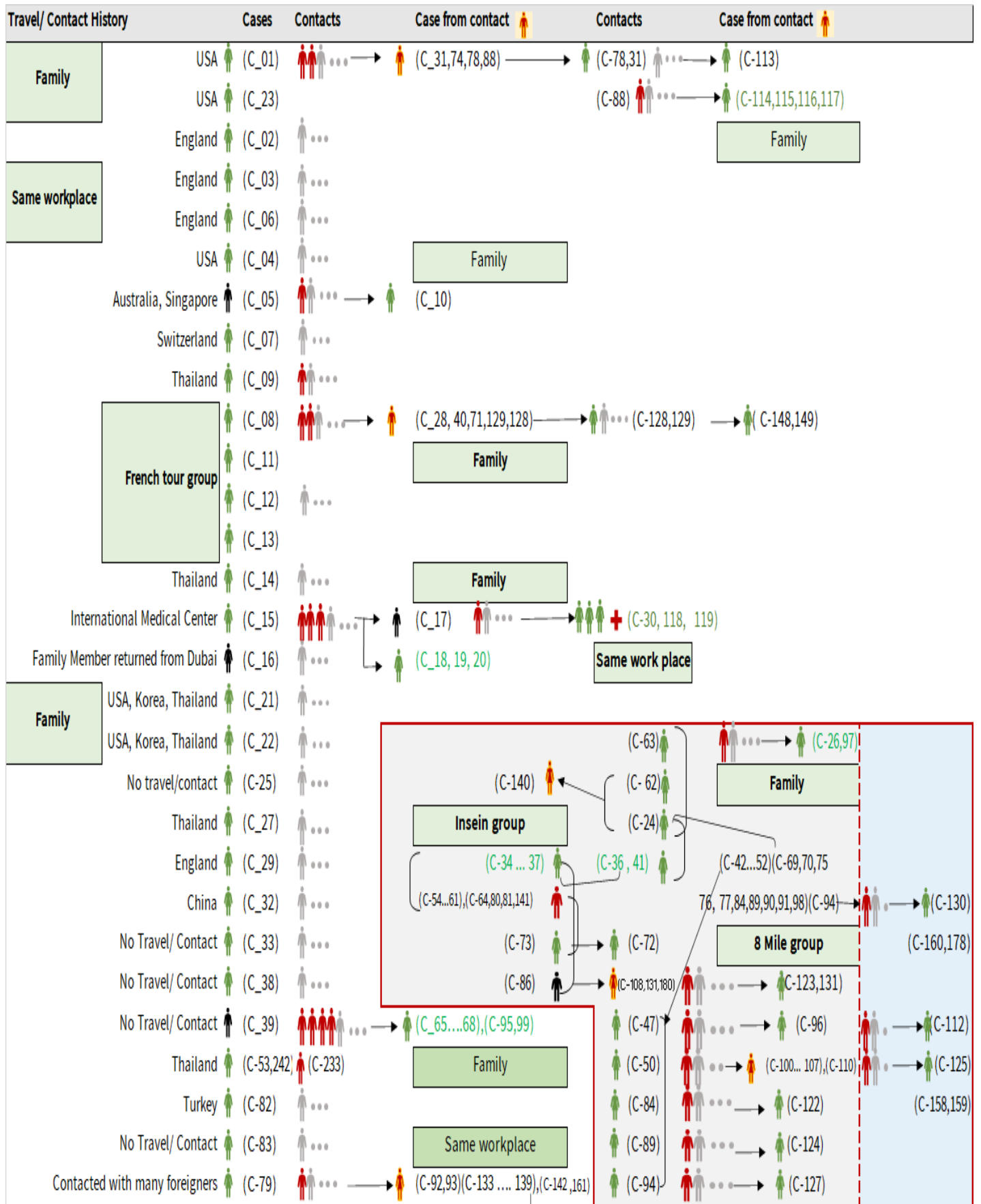
Total laboratory confirmed cases by date (as of 2.8.2020, 5:00 am), n= 353



Cumulative Number of active confirmed cases, recovered and deaths (23.3.2020 – 2.8.2020), n (cumulative)=353



Summary of COVID-19 confirmed cases (as of 1.8.2020), n (contacts)= 5,781



Summary of COVID-19 confirmed cases (as of 1.8.2020), n (contacts)= 5,781

Travel/ Contact History	Cases	Contacts	Case from contact	Contacts	Case from contact
No Travel/ Contact	(C-85)	...			(C-110)
No travel / Contact	(C-87)	... → (C-126)			(C-28,40,42,43,44,45,46,48,49,51,52)
No travel / Contact	(C-109)	...	(C-139) ... → (C-146)		(C-54,55,56,57,58,60,61,63,64,69,70)
No travel / Contact	(C-111)	...	(C-133,134,142) ... → (C-147)		(C-71,74,75,76,77,80,81,88,90,91,92,93)
No travel/Contact	(C-120)	...			(C-98,100,101,102,103,104,105,106,107,108)
England	(C-327)	(C-121,302,303,317)			(C-133,134,135,136,137,138,139,140,141,142)
No travel/Contact	(C-132)	...			(C-151,152,153,154,157,158,159,160,161)
Dubai/Thailand	(C-143)	...			(C-164,165,167,168,170,171,172,174)
No travel/Contact	(C-144)	...			(C-178,184,189,191,193,205,207,216,217,218)
India	(C-145,204,209,210,212,213,215,220,221,223,224,229,225,227,228,252,255,259,296,299,305,306,3				(C-226,233,234,235,237,246,253,258)
China	(C-150,230)				
Contact with religious event cluster	(C-162)	... → (C-151,152,153,154,157) → (C-165 ... 177) (C-166,169,173,175,176,177)			
No travel/contact	(C-155)	... → (C-163,164) (163) → (C-177) ... → (C-179) ... → (C-181)			
No travel/contact	(C-156)	...			
No travel/contact	(C-183)	...			
Malaysia	(C-184,189,273,280,351,353)	(C-182,185,186,191,188,190,187,200,201,232,275,282)			
UAE	(C-301,315,316,337)	(C-193,192,194,195,196,197,198,199,300,301,314,340)			
Italy	(C-243,202)				
No travel/Contact	(C-231)				
Bangladesh	(C-234,244,247,250,262,309,310,326,334,348)	(C-244,245,247,248,250,262,291,292,293,308,325)			
No travel/contact	(C-245)	...			
No travel/contact	(C-249)				
No travel/contact	(C-263)	...			
Thailand	(C-269,279,332,333,335,346,349,352)	(C-264,265,266,267,268,270,271,272,273,274,276,277,278,280,281,283,284,285,286,287,294,304,312,336,338)			
Quata	(C-288)	(C-289,290)			
India	(C-203,205.....214,216...219,221.... 229,....240,241,246,251,253,254...258,260,261,295,297,298,307,322,323,324,344,345)	(C-328,329,330)			
Lao	(C-311)	...			
Singapore	(C-313)	...			
Philippines	(C-319,321,342,343)	(C-320)			
USA	(C-347,350)	(C-331)			
No travel/contact	(C-339)	...			

Summary of current situation

Type	New (31.7.2020-1.8.2020)	Total (on 1.8.2020)
Suspected and Person Under Investigation (PUI)	17	123
Hospital Quarantine	5	38
Facility Quarantine	460	18,636

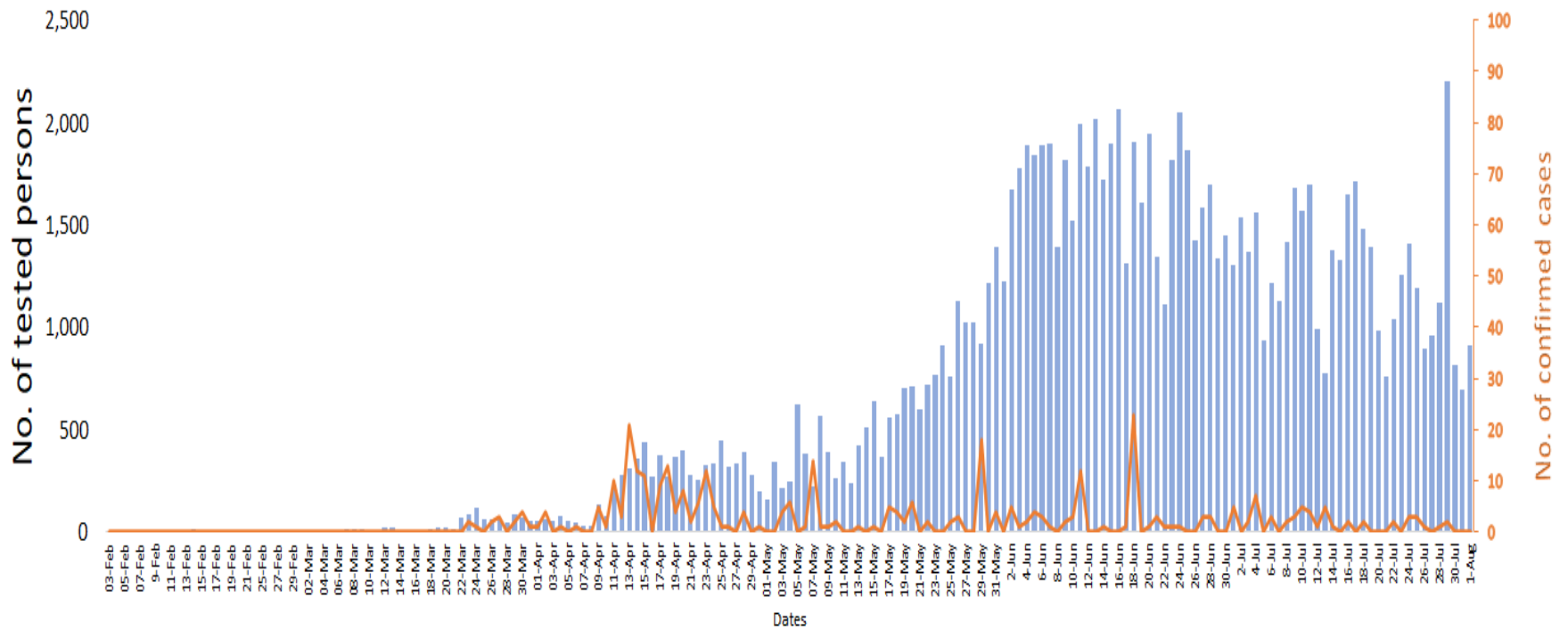
Person under Investigation (PUI) by State/Region hospitals (31.1.2020 – 1.8.2020) n= 6,819

No.	State/Region	PUI
1	Yangon	3416
2	Mandalay	1406
3	Kayin	302
4	Mon	281
5	Shan (N)	237
6	Magway	214
7	Bago	181
8	Shan (E)	125
9	Shan (S)	104
10	Ayeyarwaddy	102
11	Sagaing	90
12	Kayah	81
13	Thanintharyi	75
14	Rakhine	69
15	Naypyitaw	64
16	Kachin	42
17	Chin	30
Total		6,819

No. of Facility Quarantine sites and Quarantined people on 1.8.2020

No.	State/Region	No. of facilities	Total no. of quarantine
1	Yangon	55	3259
2	Mon	258	2532
3	Bago	232	2338
4	Kayin	372	2282
5	Tanintharyi	189	1680
6	Magway	418	1538
7	Sagaing	170	1033
8	Mandalay	66	841
9	Rakhine	247	746
10	Kachin	426	615
11	Ayeyarwaddy	167	598
12	Shan South	79	509
13	Naypyitaw	1	274
14	Shan North	269	239
15	Kayah	18	85
16	Chin	17	61
17	Shan East	9	6
Total		2,993	18,636

COVID-19 confirmed cases among tested by date (as of 1.8.2020)

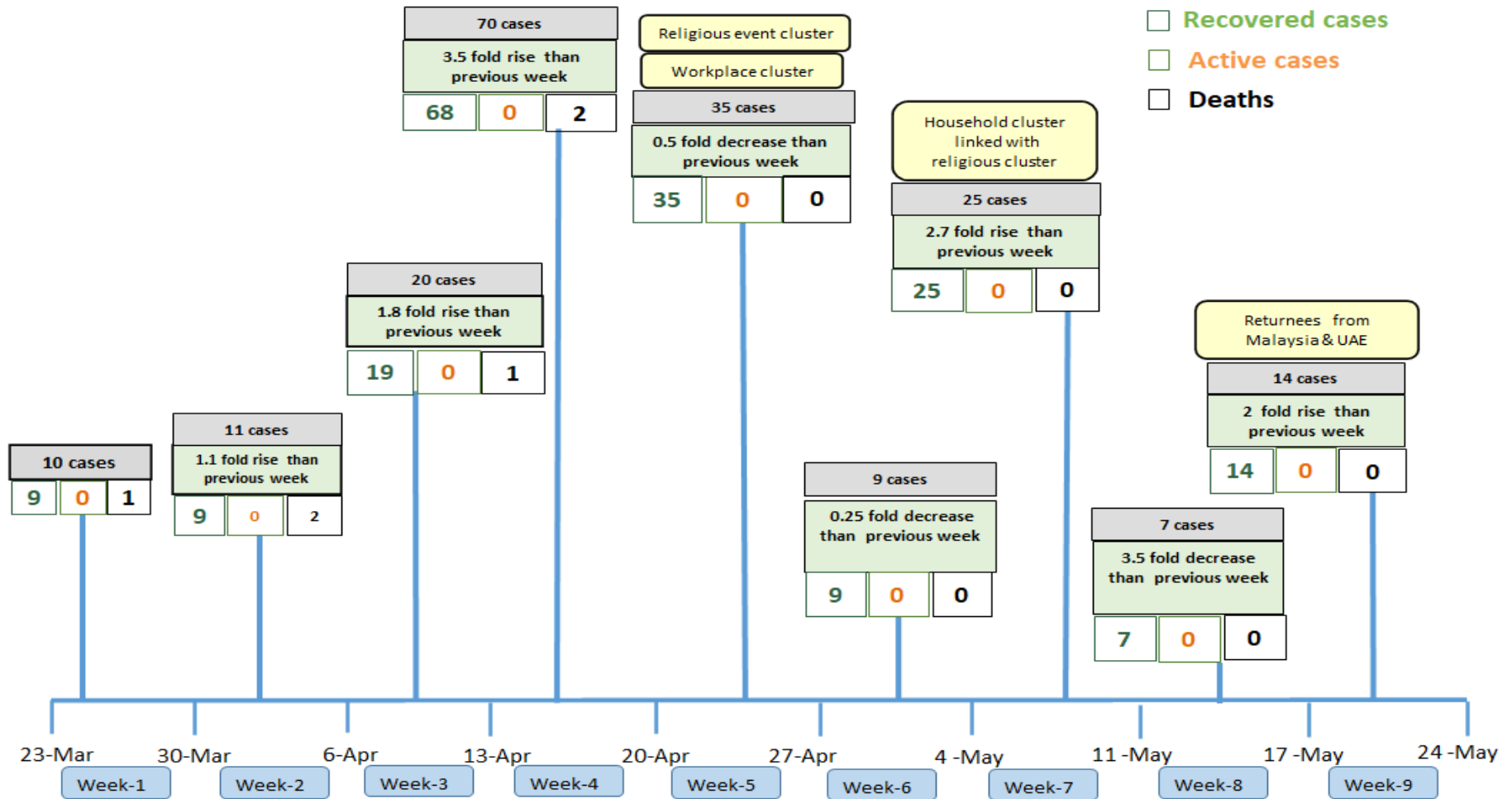


Total tested persons - 118,127

Total confirmed cases - 353

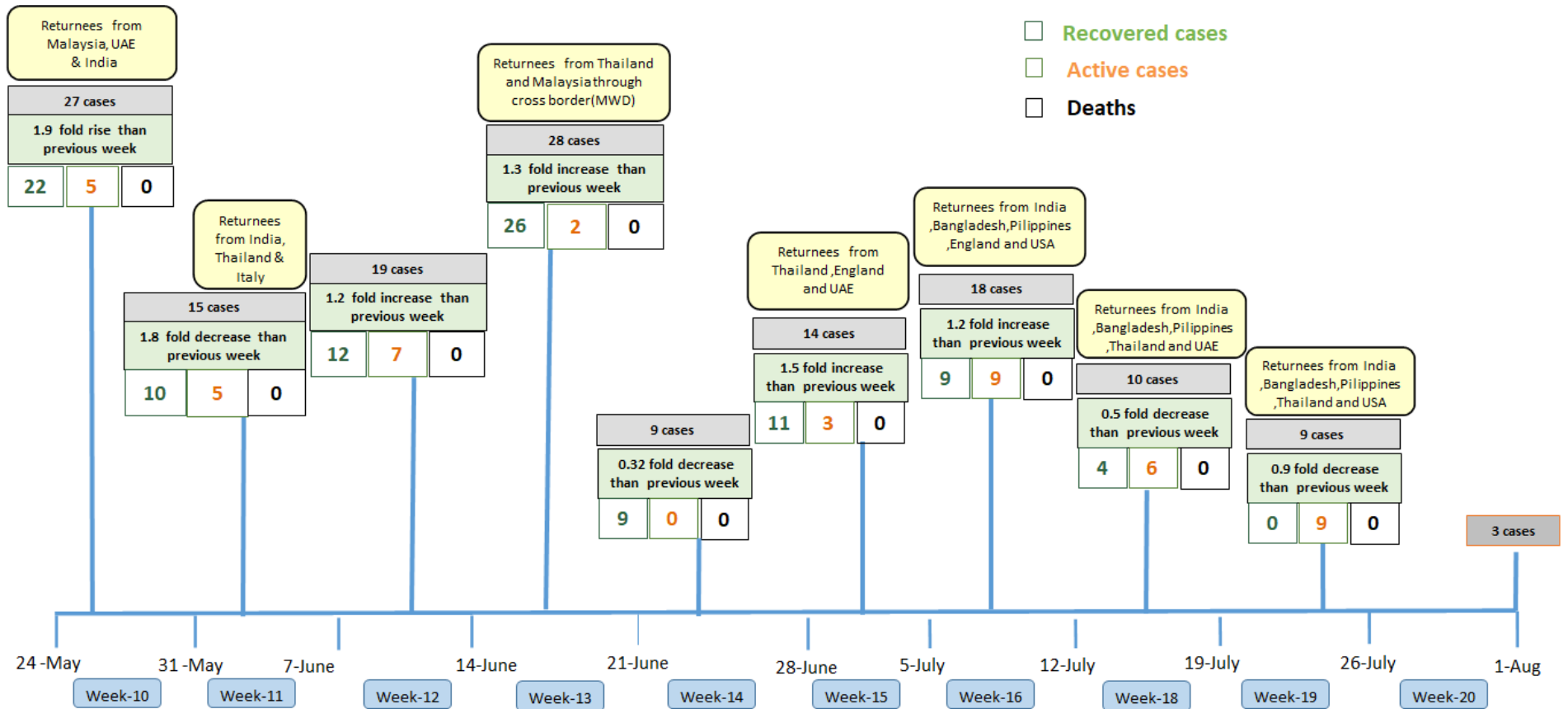
■ Tested person — Confirmed case

Summary of new confirmed cases detection after first two cases (as of 1.8.2020)



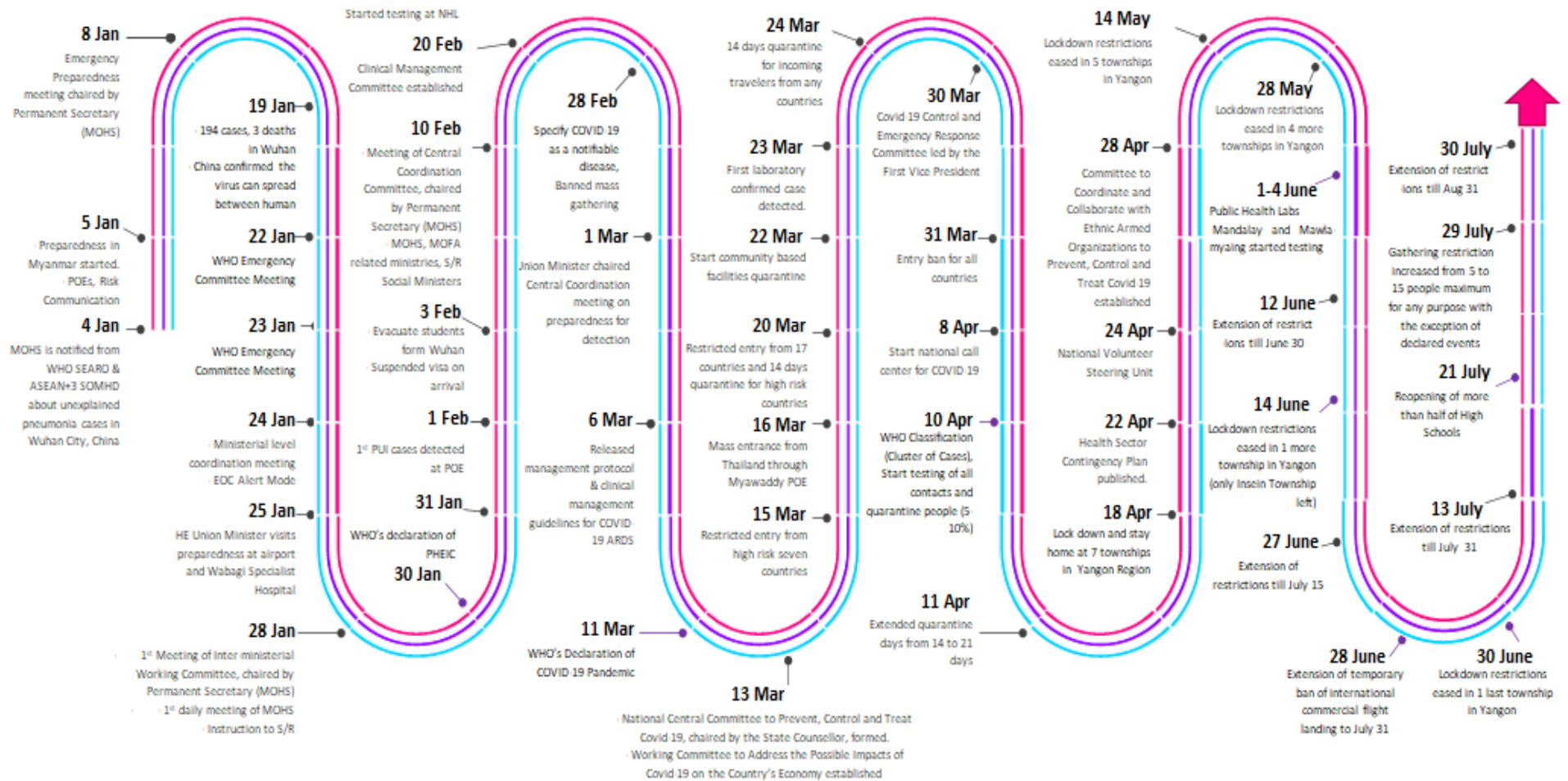
- Confirmed cases were detected as a peak in the 4th week after first confirmed cases due to the religious event cluster.
- Confirmed cases were decreased but still raised than the first 3 weeks due to the religious event cluster and workplace cluster.
- There were an increased in numbers of cases in the 7th week after the first two cases due to the household cluster linked with a religious cluster.
- Confirmed cases were detected by a nearly two-fold rise in the 9th and 10th weeks after the first two cases because of returnees coming back by relief flights.

Summary of new confirmed cases detection after first two cases (as of 1.8.2020)



- Confirmed cases were detected as a peak in the 4th week after first confirmed cases due to the religious event cluster.
- Confirmed cases were decreased but still raised than the first 3 weeks due to the religious event cluster and workplace cluster.
- There were an increased in numbers of cases in the 7th week after the first two cases due to the household cluster linked with a religious cluster.
- Confirmed cases were detected by a nearly two-fold rise in the 9th and 10th weeks after the first two cases because of returnees coming back by relief flights.

Timeline of Preparedness and Response to COVID-19 in Myanmar (as of 1.8.2020)



Hotline Number — 0673 420 268

Data source - CEU, DMS, NHL, PHL (MDY and MLM), DMR, DSGH, State and Region Health Departments