



Ministry of Health and Sports (Myanmar)

Department of Public Health

Central Epidemiology Unit

(28 July 2020)

Coronavirus Disease 2019 (COVID-19)

Situation Report - 112

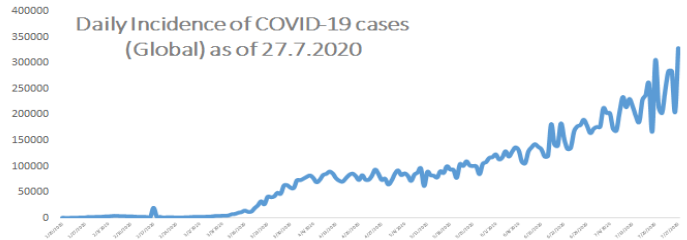
Data as reported by States and Regions by 11:00 PM MST 27 July 2020

Global Situation (WHO situation report - 189) data as of 14:30 MST 27 July 2020

Confirmed cases
16,114,449

Deaths
646,641

Case Fatality Rate
4.0 %



Myanmar Situation

Total Tested

112,381

Confirmed Cases

350

Negative

112,031

Recovered

293

83.7% of Confirmed cases

Active

51

14.5% of Confirmed cases

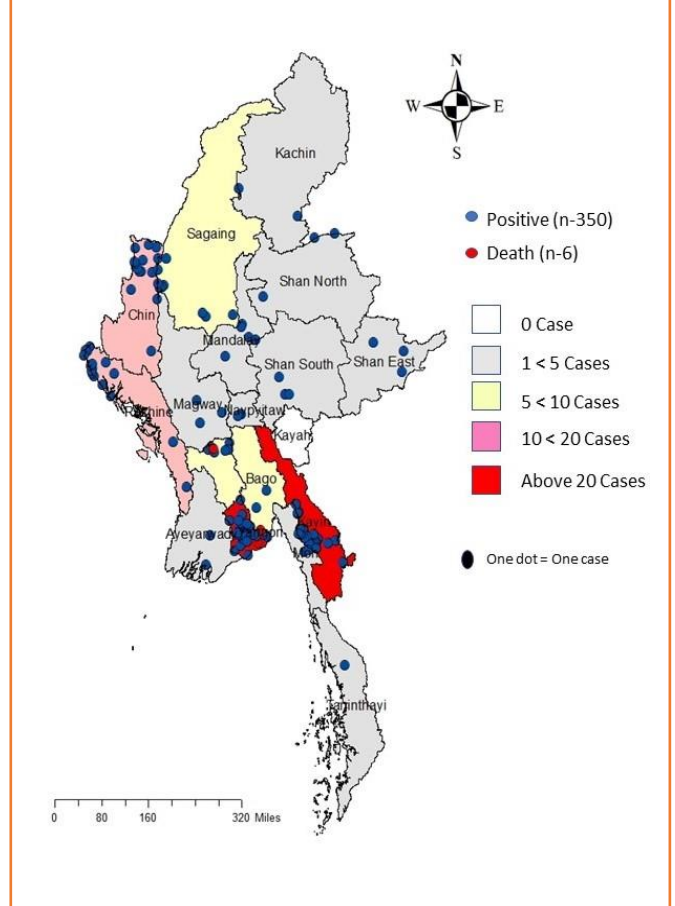
Death

6

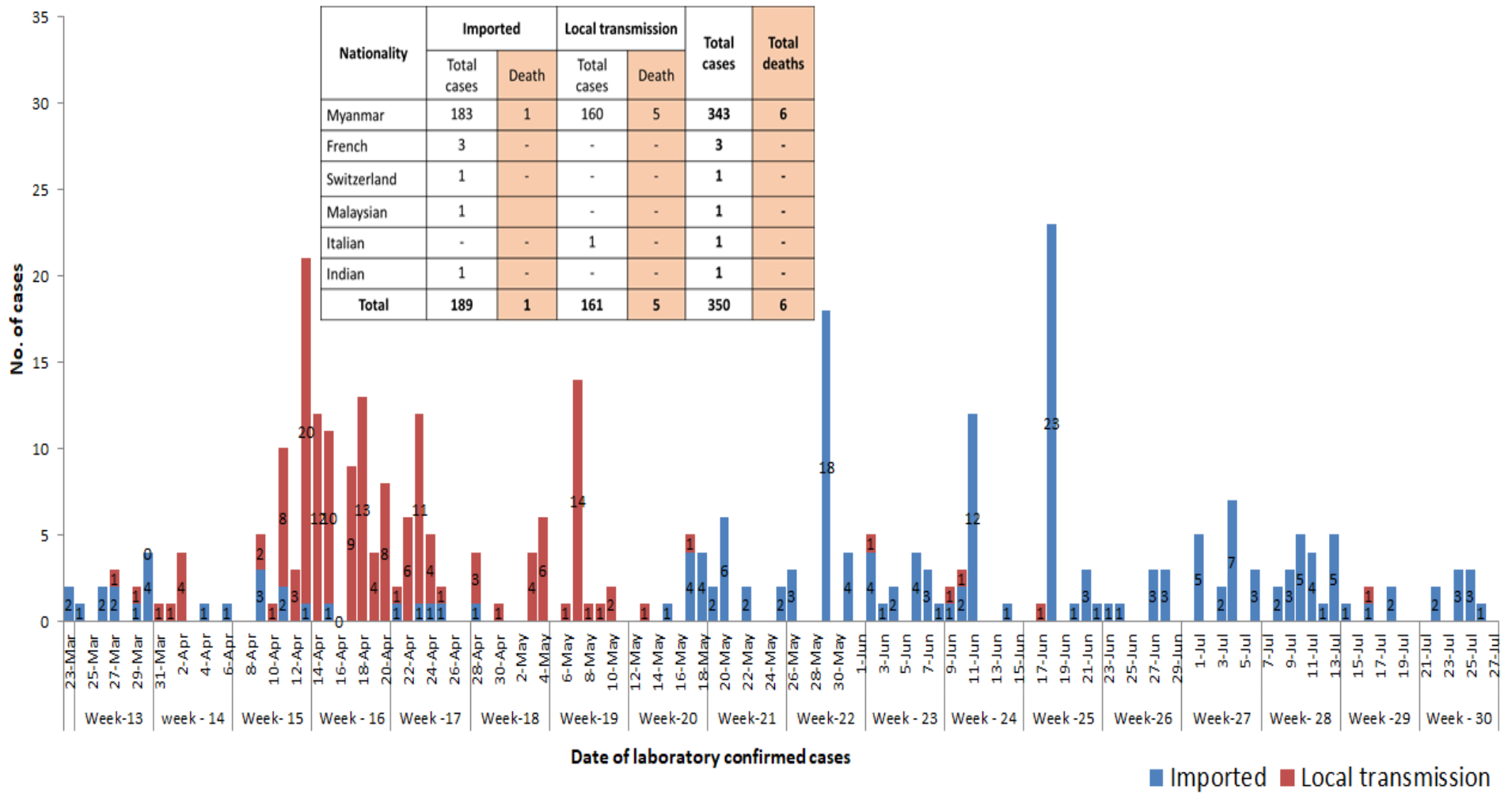
1.7% of Confirmed cases

No	State/Region	COVID –19 Confirmed case	Recovered	Deaths
1	Yangon	248	202(1 New)	5
2	Kayin	28	24	-
3	Rakhine	16	13	-
4	Chin	14	11	-
5	Sagaing	9	9	-
6	Bago	9	8	1
7	Shan (South)	4	4	-
8	Mandalay	4	4	-
9	Shan (East)	3	3	-
10	Shan (North)	3	3	-
11	Magway	3	3	-
12	Naypyitaw	2	2	-
13	Ayeyarwaddy	2	2	-
14	Kachin	2	2	-
15	Mon	2	2	-
16	Thanintharyi	1	1	-
17	Kayah	-	-	-
Total		350	293(1 New)	6

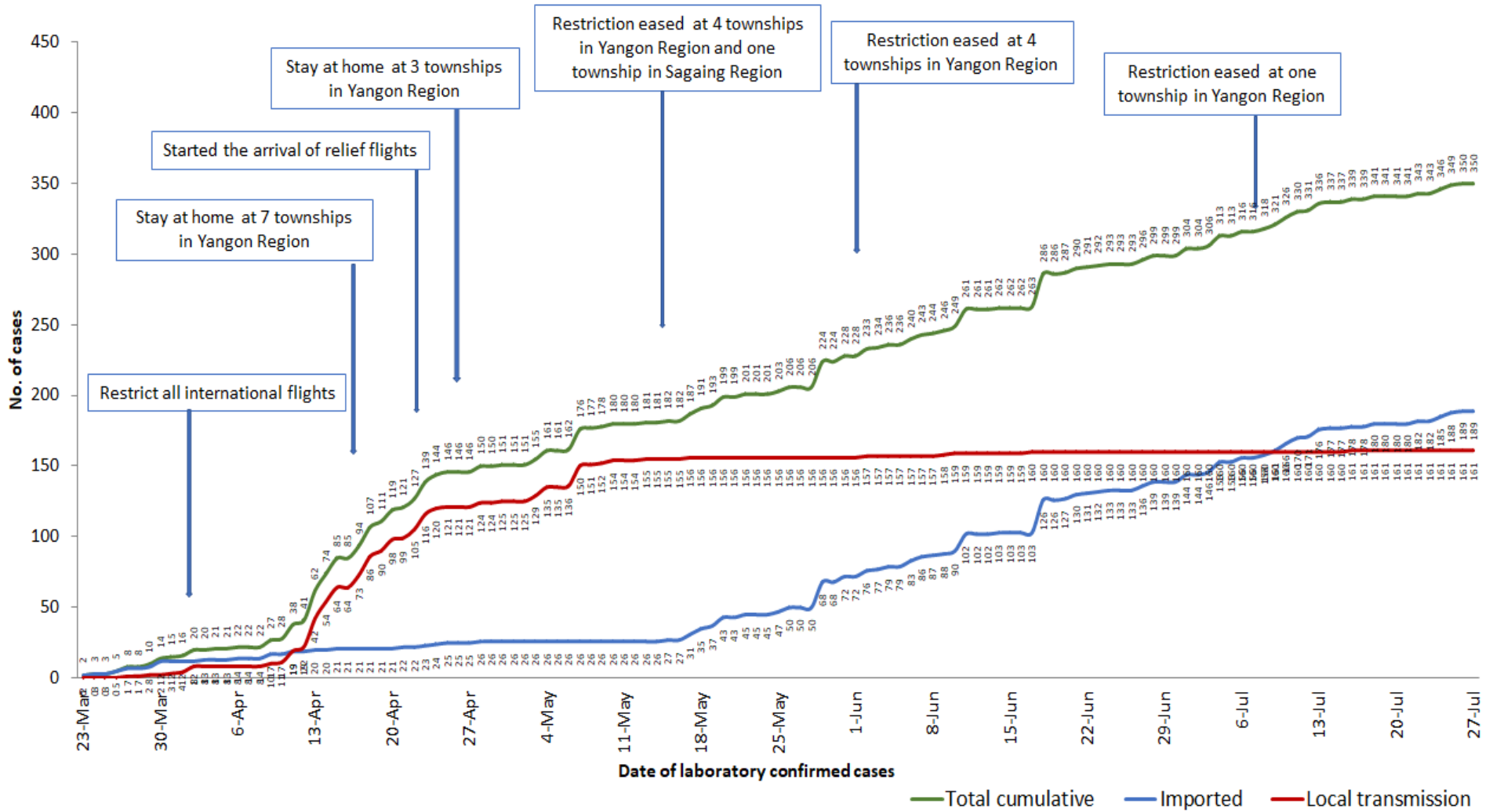
Map showing COVID-19 laboratory confirmed cases



COVID-19 confirmed cases by types of transmissions (as of 27.7.2020, 11:00 pm) n=350



Total laboratory confirmed cases by date (as of 27.7.2020, 11:00 pm), n= 350



Stay at home at 3 townships in Yangon Region

Started the arrival of relief flights

Stay at home at 7 townships in Yangon Region

Restrict all international flights

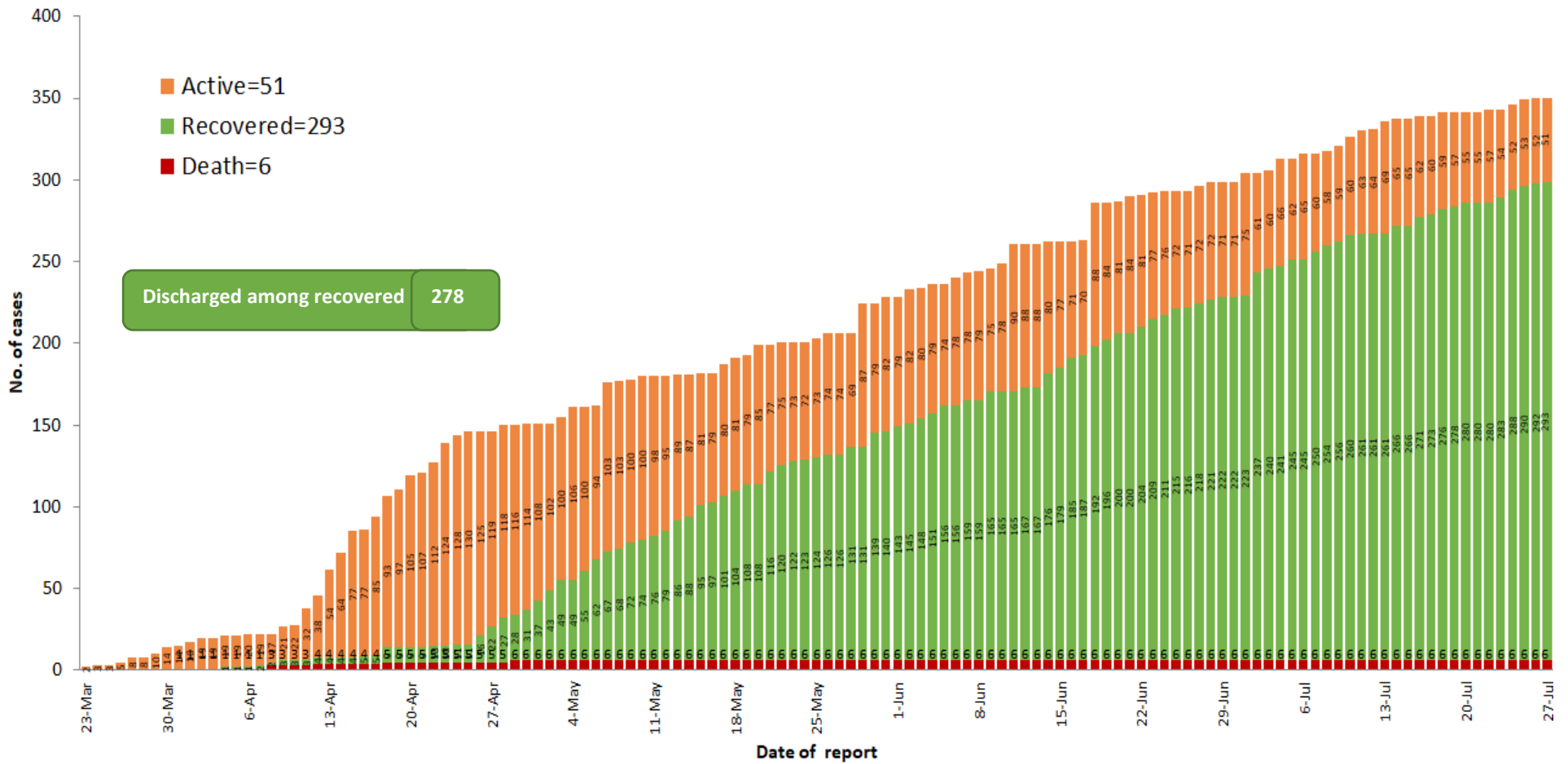
Restriction eased at 4 townships in Yangon Region and one township in Sagaing Region

Restriction eased at 4 townships in Yangon Region

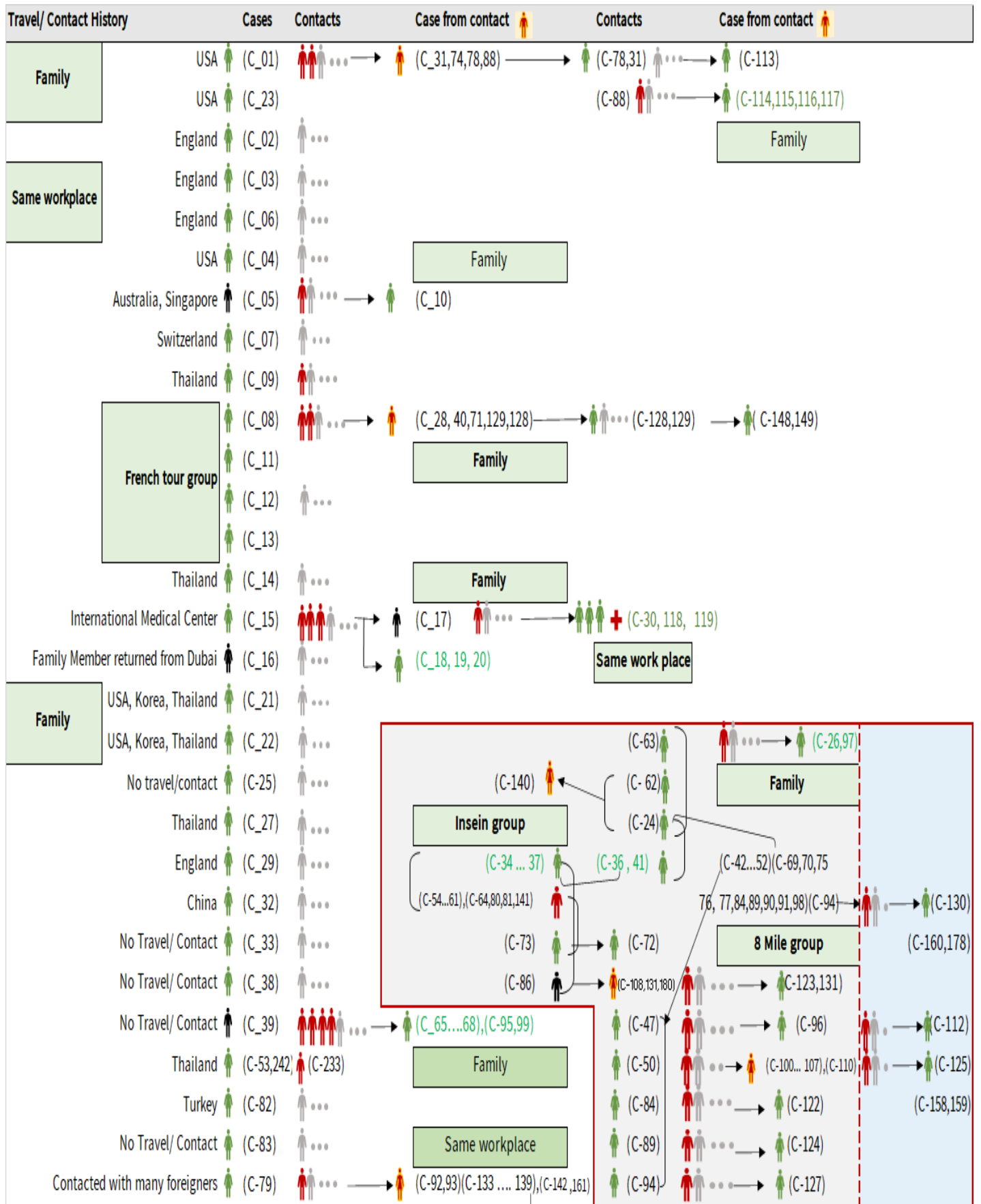
Restriction eased at one township in Yangon Region

— Total cumulative — Imported — Local transmission

Cumulative Number of active confirmed cases, recovered and deaths (23.3.2020 – 27.7.2020), n (cumulative)=350



Summary of COVID-19 confirmed cases (as of 27.7.2020), n (contacts)= 5,777



Summary of COVID-19 confirmed cases (as of 27.7.2020), n (contacts)= 5,777

Travel/ Contact History	Cases	Contacts	Case from contact	Contacts	Case from contact
No Travel/ Contact	(C-85)	...			(C-110)
No travel / Contact	(C-87)	... → (C-126)			(C-28,40,42,43,44,45,46,48,49,51,52)
No travel / Contact	(C-109)	...	(C-139) ... → (C-146)		(C-54,55,56,57,58,60,61,63,64,69,70)
No travel / Contact	(C-111)	...	(C-133,134,142) ... → (C-147)		(C-71,74,75,76,77,80,81,88,90,91,92,93)
No travel/Contact	(C-120)	...			(C-98,100,101,102,103,104,105,106,107,108)
England	(C-327)	(C-121,302,303,317)			(C-133,134,135,136,137,138,139,140,141,142)
No travel/Contact	(C-132)	...			(C-151,152,153,154,157,158,159,160,161)
Dubai/Thailand	(C-143)	...			(C-164,165,167,168,170,171,172,174)
No travel/Contact	(C-144)	...			(C-178,184,189,191,193,205,207,216,217,218)
India	(C-145,204,209,210,212,213,215,220,221,223,224,229,225,227,228,252,255,259,296,299,305,306,3				(C-226,233,234,235,237,246,253,258)
China	(C-150,230)				
Contact with religious event cluster	(C-162)	... → (C-151,152,153,154,157) → (C-165 ... 177) (C-166,169,173,175,176,177)			
No travel/contact	(C-155)	... → (C-163,164) (163) → (C-177) ... → (C-179) ... → (C-181)			
No travel/contact	(C-156)	...			
No travel/contact	(C-183)	...			
Malaysia	(C-184,189,273,280)	(C-182,185,186,191,188,190,187,200,201,232,275,282)			
UAE	(C-300,301,315,316,337,340)	(C-193,192,194,195,196,197,198,199,301,314)			
Italy	(C-243,202)				
No travel/Contact	(C-231)				
Bangladesh	(C-234,244,247,250,262,308,309,310,326,334,348)	(C-244,245,247,248,250,262,291,292,293,325)			
No travel/contact	(C-245)	...			
No travel/contact	(C-249)				
No travel/contact	(C-263)	...			
Thailand	(C-269,279,332,333,335,346,349)	(C-264,265,266,267,268,270,271,272,273,274,276,277,278,280,281,283,284,285,286,287,294,304,312,336,338)			
Quata	(C-288)	(C-289,290)			
India	(C-203,205.....214,216...219,221.... 229,....240,241,246,251,253,254...258,260,261,295,297,298,307,322,323,324,344,345)	(C-328,329,330)			
Lao	(C-311)	...			
Singapore	(C-313)	...			
Philippines	(C-319,321,342,343)	(C-320)			
USA	(C-331,347,350)	...			
No travel/contact	(C-339)	...			

Summary of current situation

Type	New (26.7.2020-27.7.2020)	Total (on 27.7.2020)
Suspected and Person Under Investigation (PUI)	25	155
Hospital Quarantine	0	42
Facility Quarantine	609	21,367

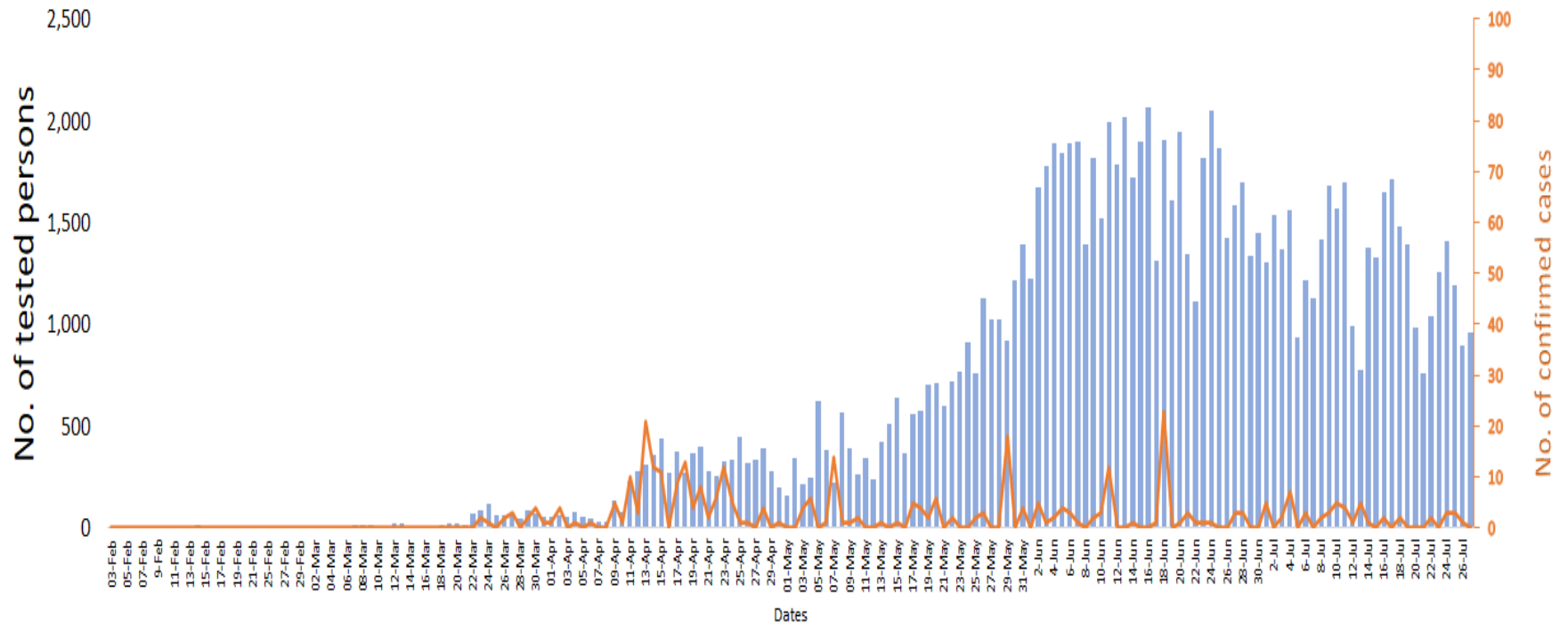
Person under Investigation (PUI) by State/Region hospitals (31.1.2020 – 27.7.2020) n= 6,715

No.	State/Region	PUI
1	Yangon	3363
2	Mandalay	1369
3	Kayin	292
4	Mon	273
5	Shan(N)	227
6	Magway	212
7	Bago	180
8	Shan (E)	124
9	Ayeyarwaddy	103
10	Shan(S)	102
11	Sagaing	90
12	Kayah	80
13	Rakhine	73
14	Naypyitaw	69
15	Thanintharyi	64
16	Kachin	40
17	Chin	29
Total		6,715

No. of Facility Quarantine sites and Quarantined people on 27.7.2020

No.	State/Region	No. of facilities	Total no. of quarantine
1	Yangon	55	3,187
2	Bago	258	2,875
3	Mon	310	2,873
4	Kayin	399	2,742
5	Tanintharyi	189	1,908
6	Magway	304	1,711
7	Mandalay	73	1,081
8	Sagaing	174	1,061
9	Rakhine	266	866
10	Ayeyarwaddy	167	751
11	Shan South	96	731
12	Kachin	424	676
13	Naypyitaw	2	373
14	Shan North	265	243
15	Kayah	18	138
16	Chin	15	95
17	Shan East	11	56
Total		3,026	21,367

COVID-19 confirmed cases among tested by date (as of 27.7.2020)

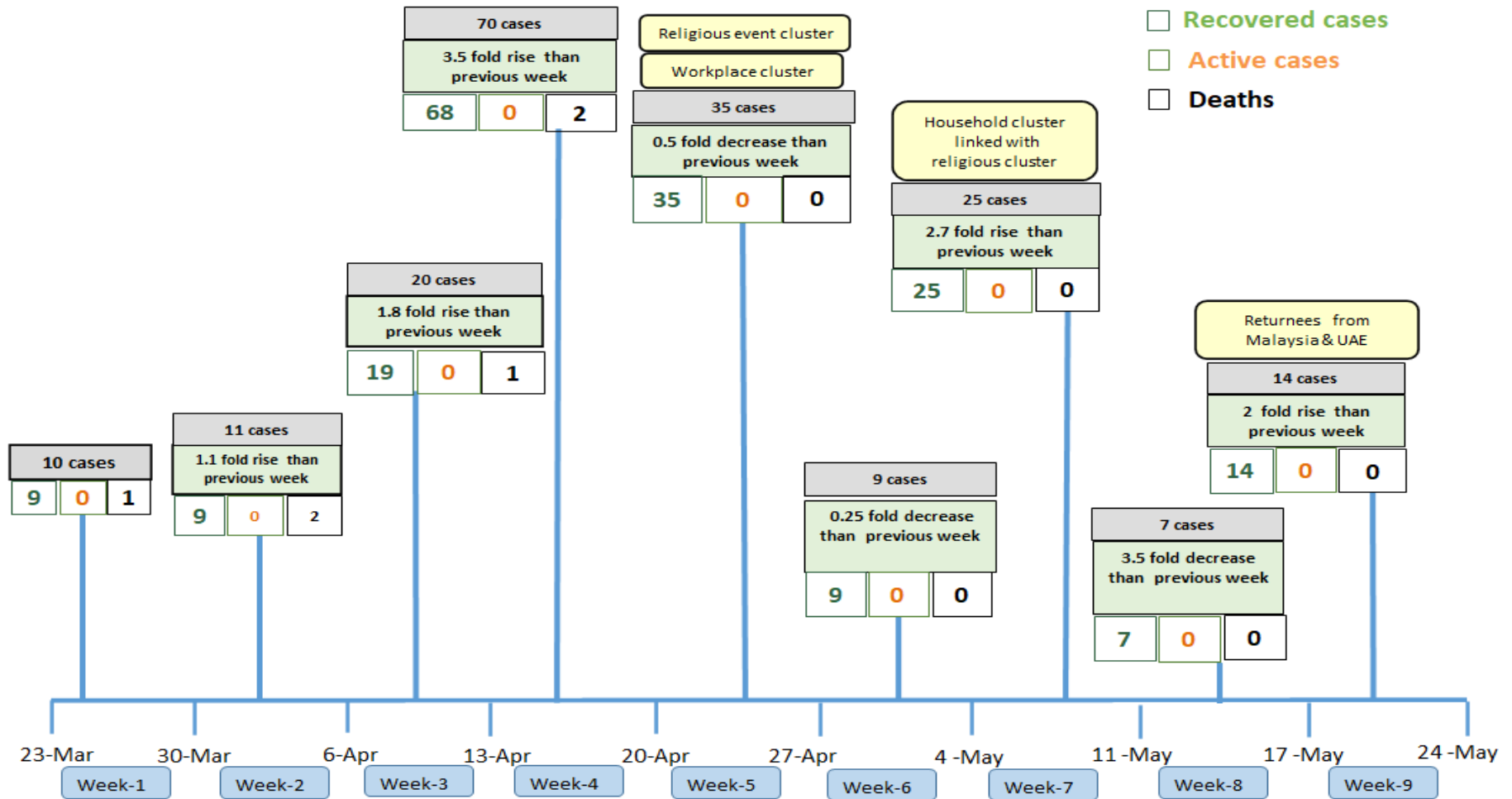


Total tested persons - 112,381

Total confirmed cases - 350

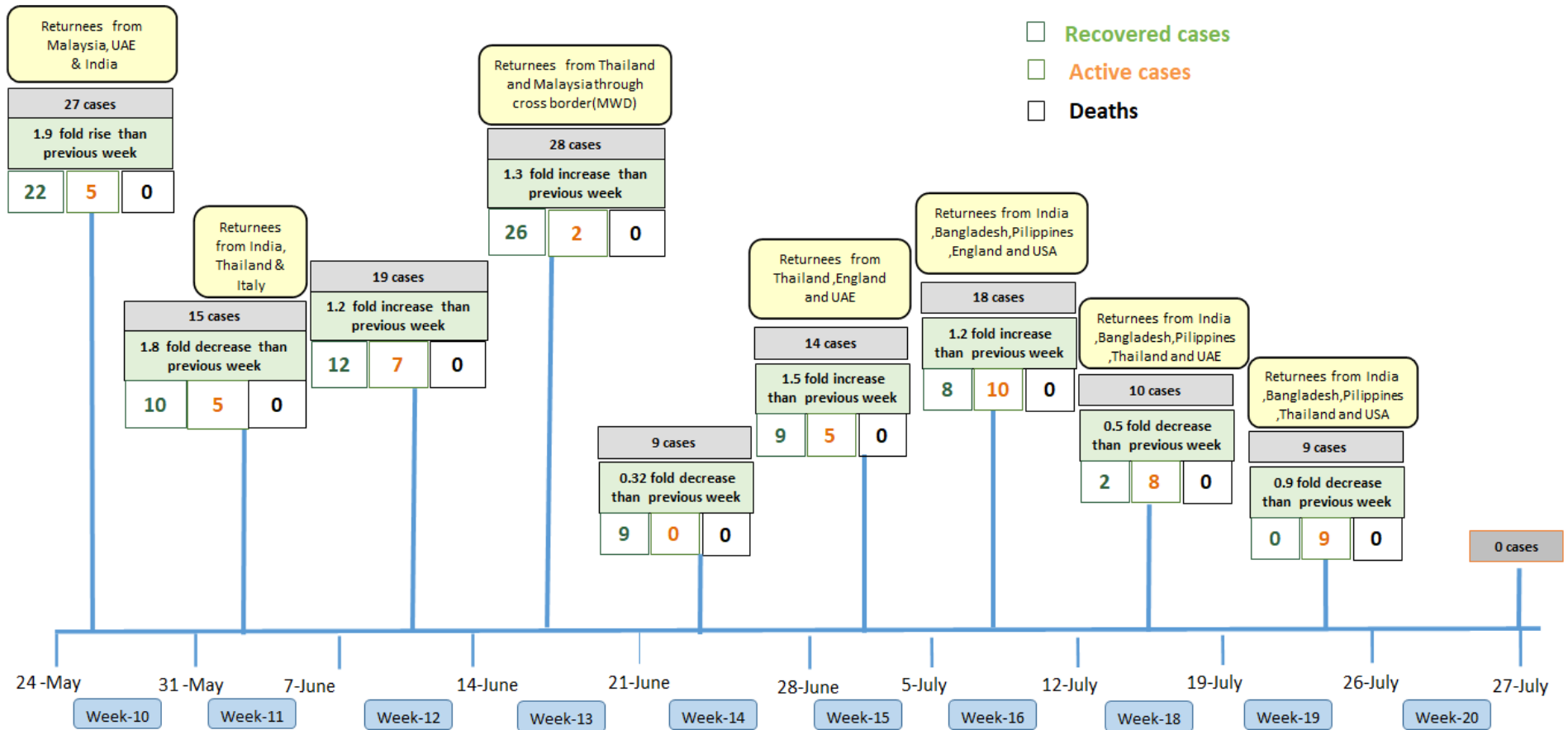
Tested person Confirmed case

Summary of new confirmed cases detection after first two cases (as of 27.7.2020)



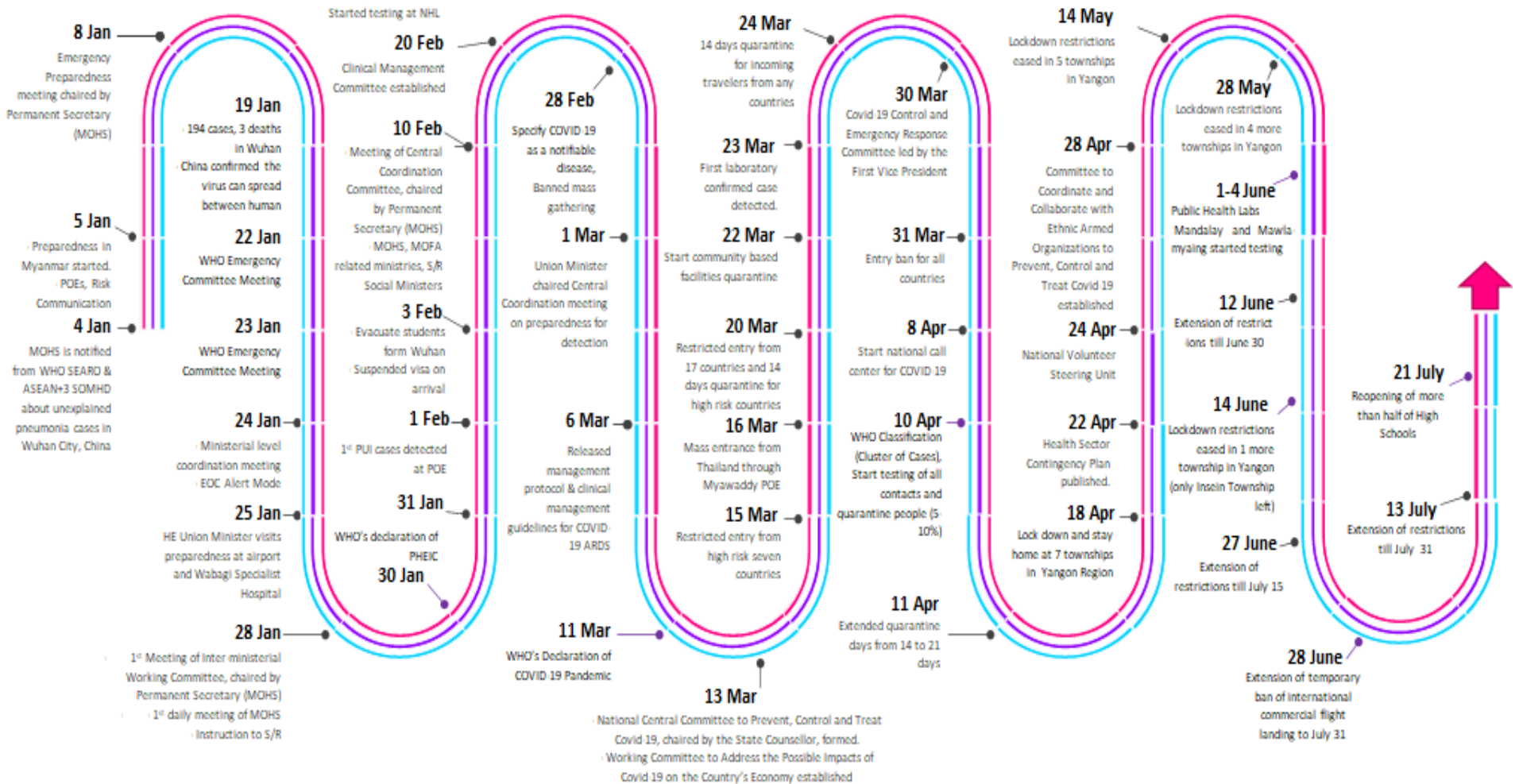
- Confirmed cases were detected as a peak in the 4th week after first confirmed cases due to the religious event cluster.
- Confirmed cases were decreased but still raised than the first 3 weeks due to the religious event cluster and workplace cluster.
- There were an increased in numbers of cases in the 7th week after the first two cases due to the household cluster linked with a religious cluster.
- Confirmed cases were detected by a nearly two-fold rise in the 9th and 10th weeks after the first two cases because of returnees coming back by relief flights.

Summary of new confirmed cases detection after first two cases (as of 27.7.2020)



- Confirmed cases were detected as a peak in the 4th week after first confirmed cases due to the religious event cluster.
- Confirmed cases were decreased but still raised than the first 3 weeks due to the religious event cluster and workplace cluster.
- There were an increased in numbers of cases in the 7th week after the first two cases due to the household cluster linked with a religious cluster.
- Confirmed cases were detected by a nearly two-fold rise in the 9th and 10th weeks after the first two cases because of returnees coming back by relief flights.

Timeline of Preparedness and Response to COVID-19 in Myanmar (as of 27.7.2020)



Hotline Number— 0673 420 268

Data source - CEU, DMS, NHL, PHL (MDY and MLM), DMR, DSGH, State and Region Health Departments