



Ministry of Health and Sports (Myanmar)

Department of Public Health

Central Epidemiology Unit

(26 July 2020)

Coronavirus Disease 2019 (COVID-19)

Situation Report - 110

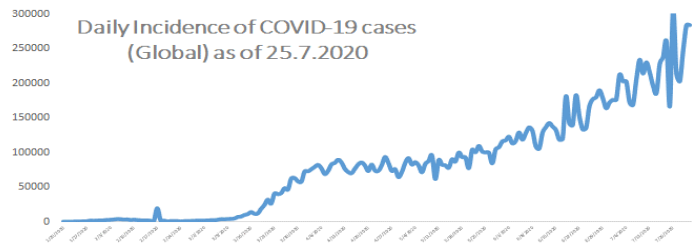
Data as reported by States and Regions by 7:30 PM MST 25 July 2020

Global Situation (WHO situation report - 187) data as of 14:30 MST 25 July 2020

Confirmed cases
15,581,009

Deaths
635,173

Case Fatality Rate
4.0 %



Myanmar Situation

Total Tested

110,526

Confirmed Cases

349

Negative

110,177

Recovered

290

83.0% of Confirmed cases

Active

53

15.1% of Confirmed cases

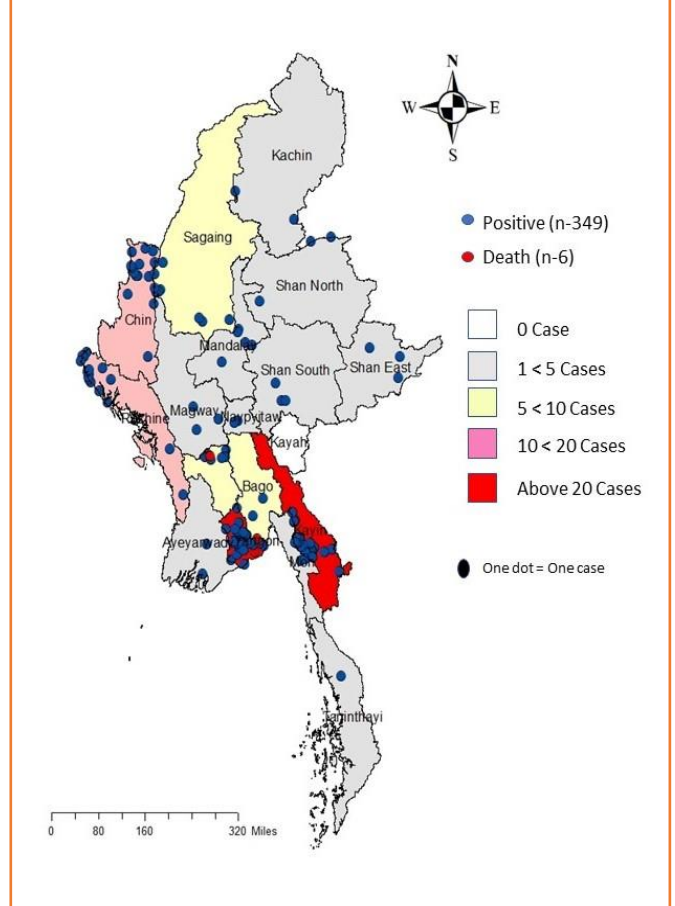
Death

6

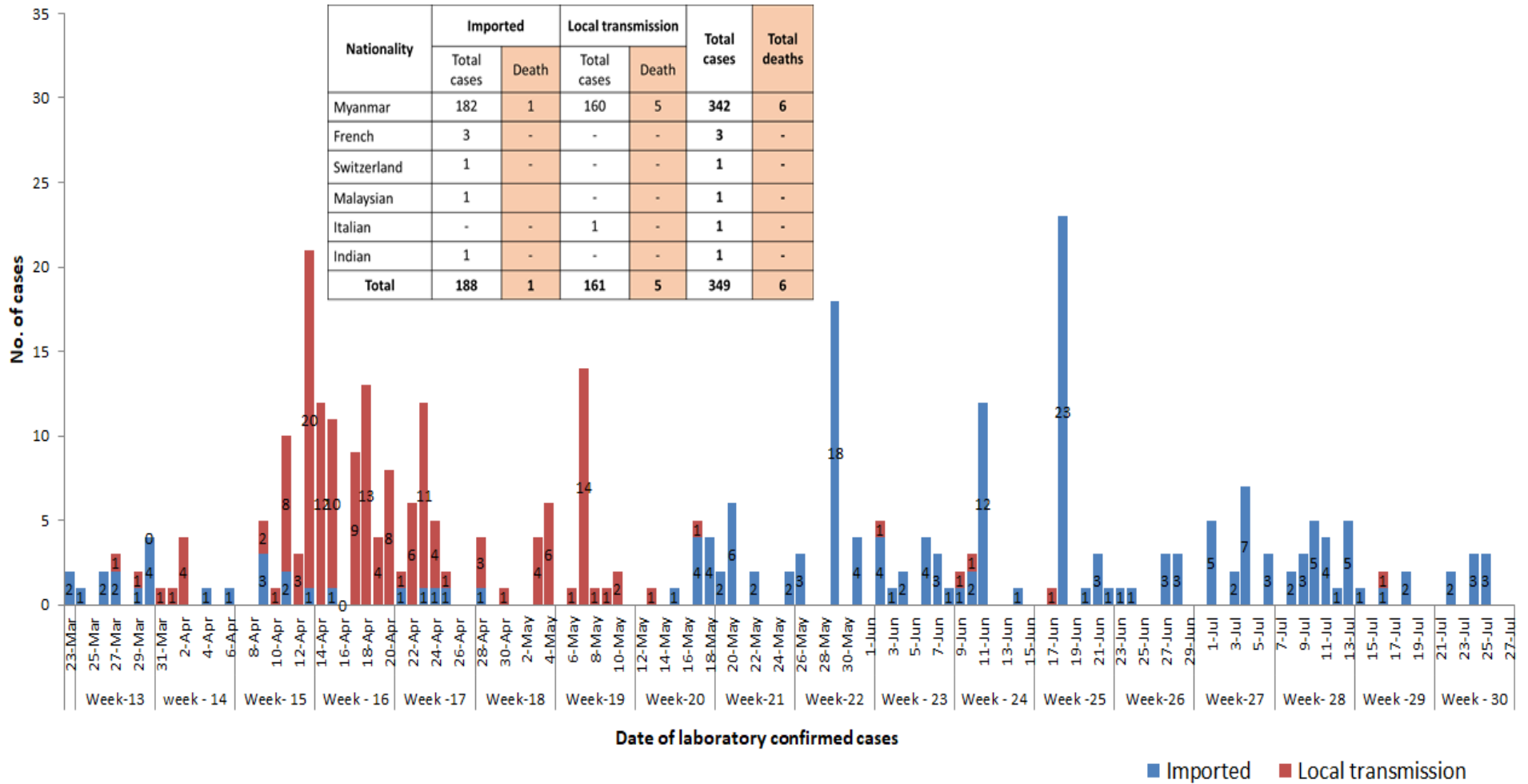
1.7% of Confirmed cases

No	State/Region	COVID –19 Confirmed case	Recovered	Deaths
1	Yangon	247(1 New)	200(1 New)	5
2	Kayin	28(1 New)	24	-
3	Rakhine	16(1 New)	13(1 New)	-
4	Chin	14	11	-
5	Sagaing	9	9	-
6	Bago	9	8	1
7	Shan (South)	4	4	-
8	Mandalay	4	3	-
9	Shan (East)	3	3	-
10	Shan (North)	3	3	-
11	Magway	3	3	-
12	Naypyitaw	2	2	-
13	Ayeyarwaddy	2	2	-
14	Kachin	2	2	-
15	Mon	2	2	-
16	Thanintharyi	1	1	-
17	Kayah	-	-	-
Total		349(3 New)	290(2 New)	6

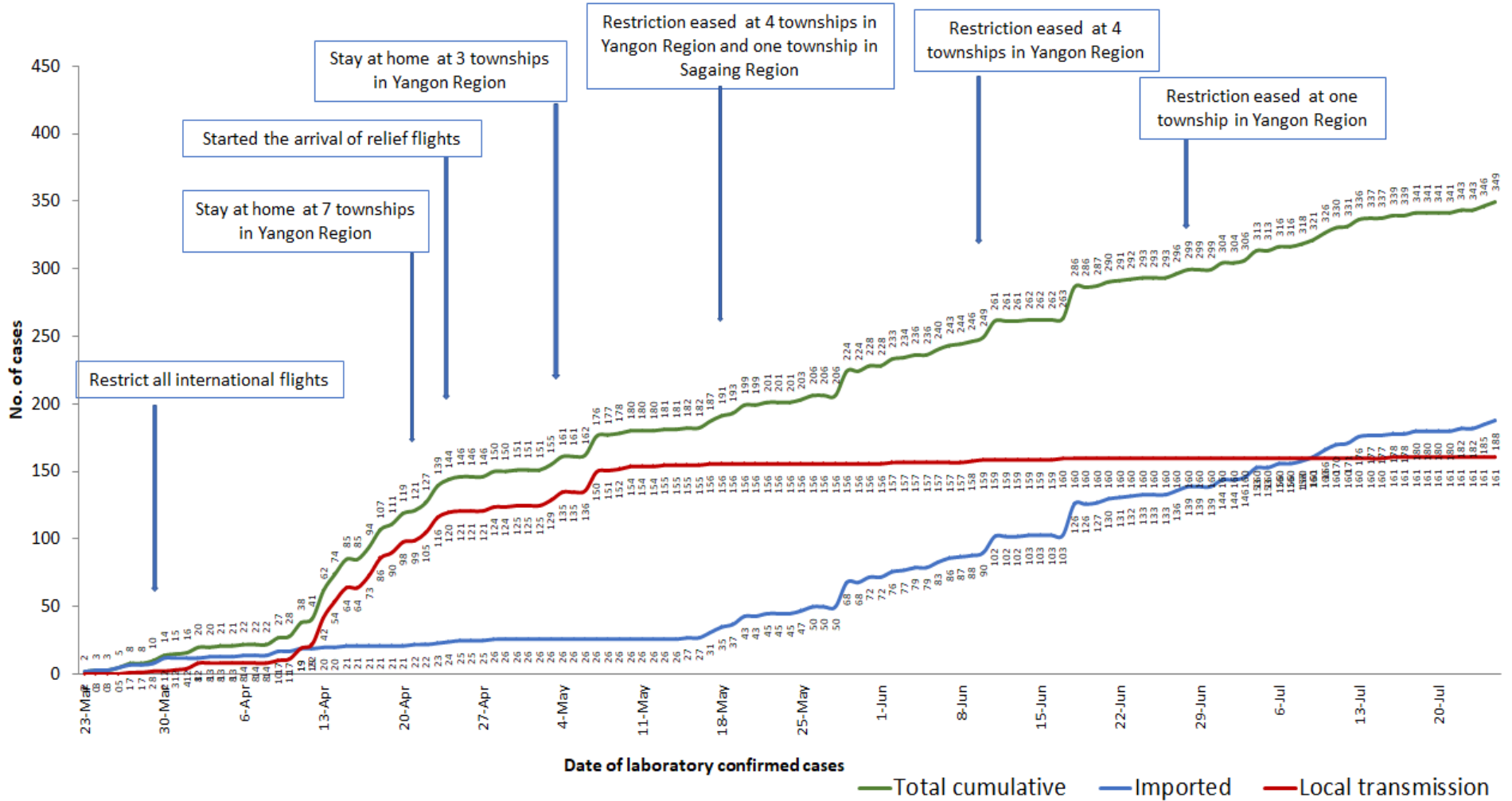
Map showing COVID-19 laboratory confirmed cases



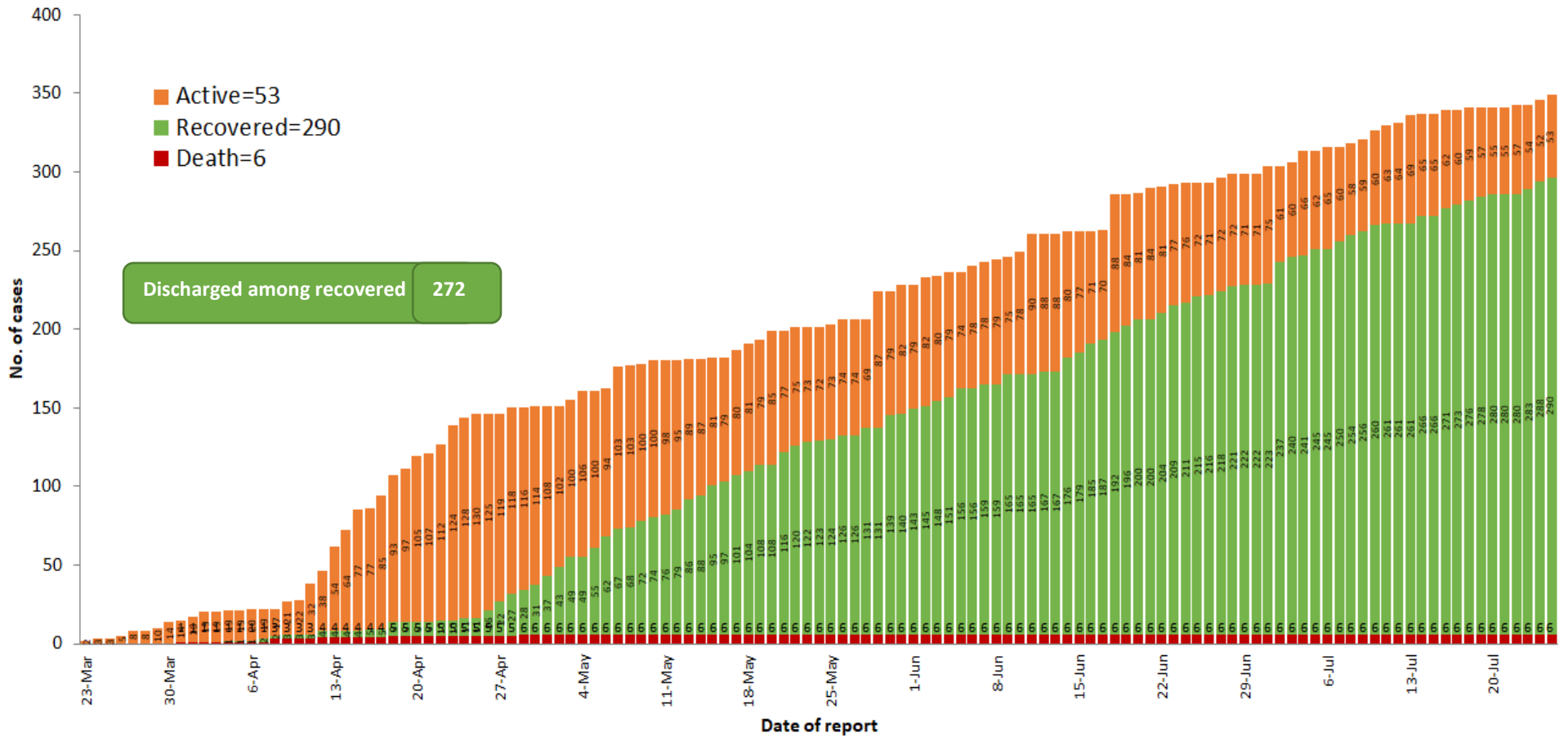
COVID-19 confirmed cases by types of transmissions (as of 25.7.2020, 7:30 pm) n=349



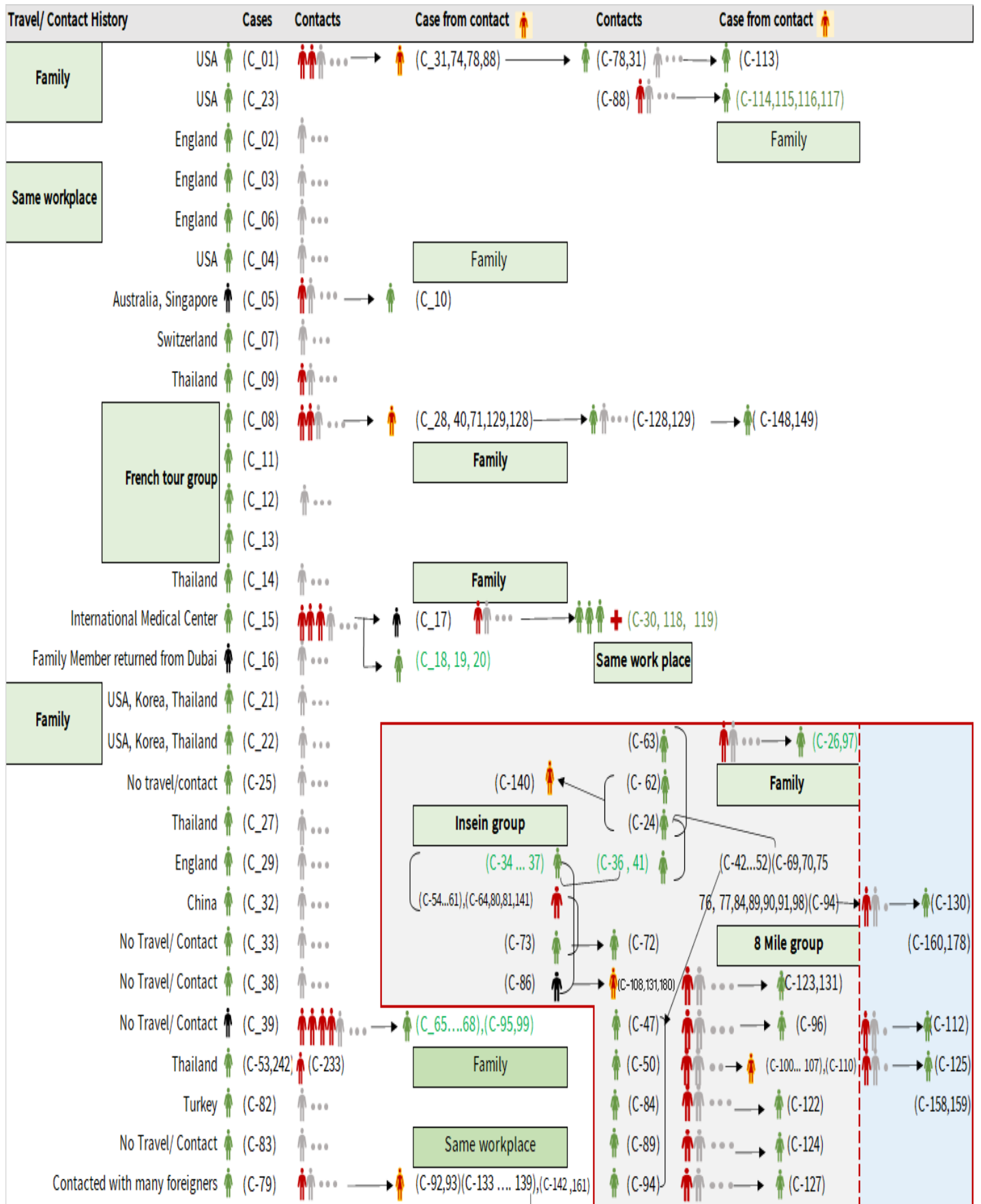
Total laboratory confirmed cases by date (as of 25.7.2020, 7:30 pm), n= 349



Cumulative Number of active confirmed cases, recovered and deaths (23.3.2020 – 25.7.2020), n (cumulative)=349



Summary of COVID-19 confirmed cases (as of 25.7.2020), n (contacts)= 5,777



Summary of COVID-19 confirmed cases (as of 25.7.2020), n (contacts)= 5,777

Travel/ Contact History	Cases	Contacts	Case from contact	Contacts	Case from contact
No Travel/ Contact	(C-85)	...			(C-110)
No travel / Contact	(C-87)	... →			(C-28,40,42,43,44,45,46,48,49,51,52)
No travel / Contact	(C-109)	...	(C-139) ... →	(C-146)	(C-54,55,56,57,58,60,61,63,64,69,70)
No travel / Contact	(C-111)	...	(C-133,134,142) ... →	(C-147)	(C-71,74,75,76,77,80,81,88,90,91,92,93)
No travel/Contact	(C-120)	...			(C-98,100,101,102,103,104,105,106,107,108)
England	(C-327)	(C-121,302,303,317)			(C-133,134,135,136,137,138,139,140,141,142)
No travel/Contact	(C-132)	...			(C-151,152,153,154,157,158,159,160,161)
Dubai/Thailand	(C-143)	...			(C-164,165,167,168,170,171,172,174)
No travel/Contact	(C-144)	...			(C-178,184,189,191,193,205,207,216,217,218)
India	(C-145,204,209,210,212,213,215,220,221,223,224,229,225,227,228,252,255,259,296,299,305,306,3				(C-226,233,234,235,237,246,253,258)
China	(C-150,230)				
Contact with religious event cluster	(C-162)	... →	(C-151,152,153,154,157) → (C-165 ... 177)	(C-166,169,173,175,176,177)	
No travel/contact	(C-155)	... →	(C-163,164) (163)	(C-177) ... → (C-179)	... → (C-181)
No travel/contact	(C-156)	...			
No travel/contact	(C-183)	...			
Malaysia	(C-184,189,273,280)	(C-182,185,186,191,188,190,187,200,201,232,275,282)			
UAE	(C-300,301,315,316,337,340)	(C-193,192,194,195,196,197,198,199,301,314)			
Italy	(C-243,202)				
No travel/Contact	(C-231)				
Bangladesh	(C-234,244,247,250,262,308,309,310,326,334,348)	(C-244,245,247,248,250,262,291,292,293,325)			
No travel/contact	(C-245)	...			
No travel/contact	(C-249)				
No travel/contact	(C-263)	...			
Thailand	(C-269,279,332,333,335,336,338,346,349)	(C-264,265,266,267,268,270,271,272,273,274,276,277,278,280,281,283,284,285,286,287,294,304,312)			
Quata	(C-288)	(C-289,290)			
India	(C-203,205.....214,216...219,221.... 229,....240,241,246,251,253,254....258,260,261,295,297,298,307,322,323,324,344,345)	(C-328,329,330)			
Lao	(C-311)	...			
Singapore	(C-313)	...			
Philippines	(C-319,320,321,342,343)	...			
USA	(C-331,347)	...			
No travel/contact	(C-339)	...			

Household

Summary of current situation

Type	New (24.7.2020-25.7.2020)	Total (on 25.7.2020)
Suspected and Person Under Investigation (PUI)	20	155
Hospital Quarantine	11	50
Facility Quarantine	1,105	21,709

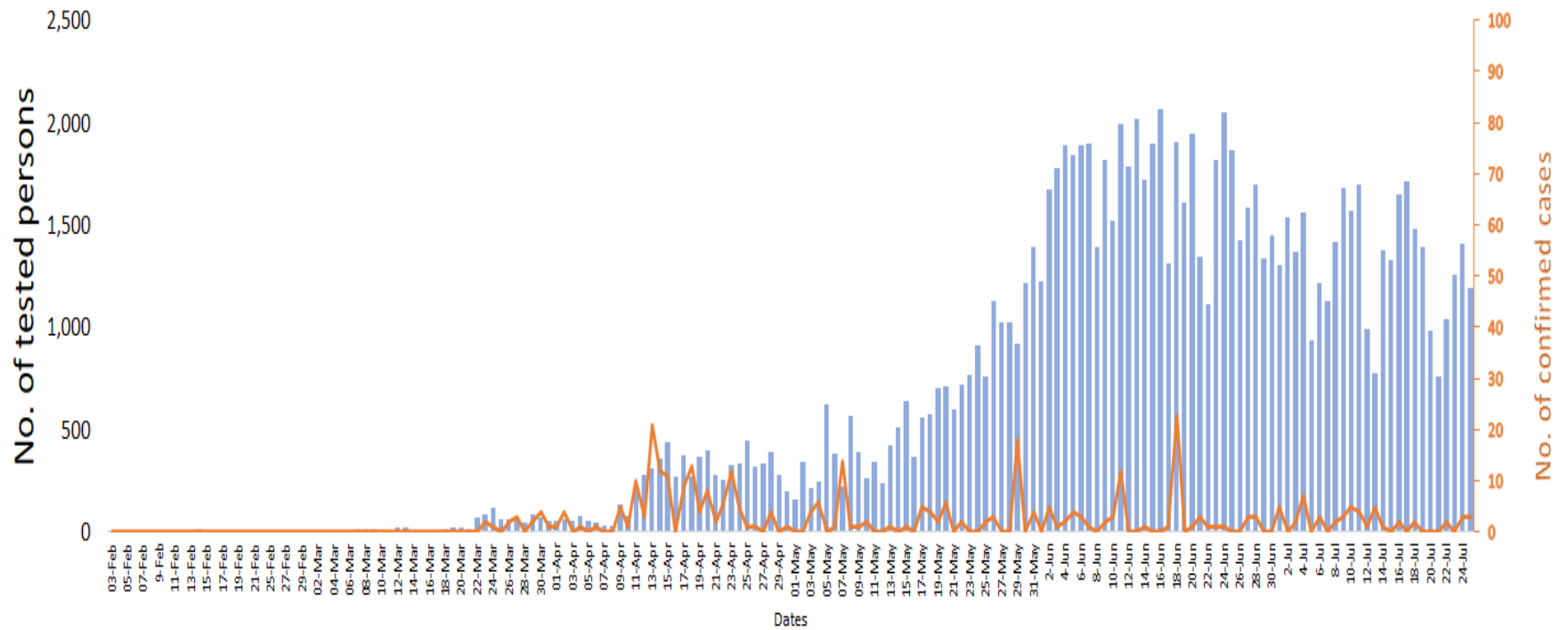
Person under Investigation (PUI) by State/Region hospitals (31.1.2020 – 25.7.2020) n= 6,678

No.	State/Region	PUI
1	Yangon	3357
2	Mandalay	1366
3	Kayin	291
4	Mon	271
5	Shan (N)	227
6	Magway	212
7	Bago	180
8	Shan (E)	124
9	Shan (S)	103
10	Ayeyarwaddy	102
11	Sagaing	90
12	Kayah	80
13	Thanintharyi	73
14	Rakhine	69
15	Naypyitaw	64
16	Kachin	40
17	Chin	29
Total		6,678

No. of Facility Quarantine sites and Quarantined people on 25.7.2020

No.	State/Region	No. of facilities	Total no. of quarantine
1	Yangon	58	3,194
2	Bago	260	2,947
3	Mon	314	2,861
4	Kayin	413	2,805
5	Tanintharyi	189	1,951
6	Magway	304	1,711
7	Mandalay	73	1,107
8	Sagaing	174	1,098
9	Rakhine	268	871
10	Shan South	97	788
11	Ayeyarwaddy	167	778
12	Kachin	424	680
13	Naypyitaw	2	376
14	Shan North	265	243
15	Kayah	18	138
16	Chin	15	105
17	Shan East	11	56
Total		3,052	21,709

COVID-19 confirmed cases among tested by date (as of 25.7.2020)

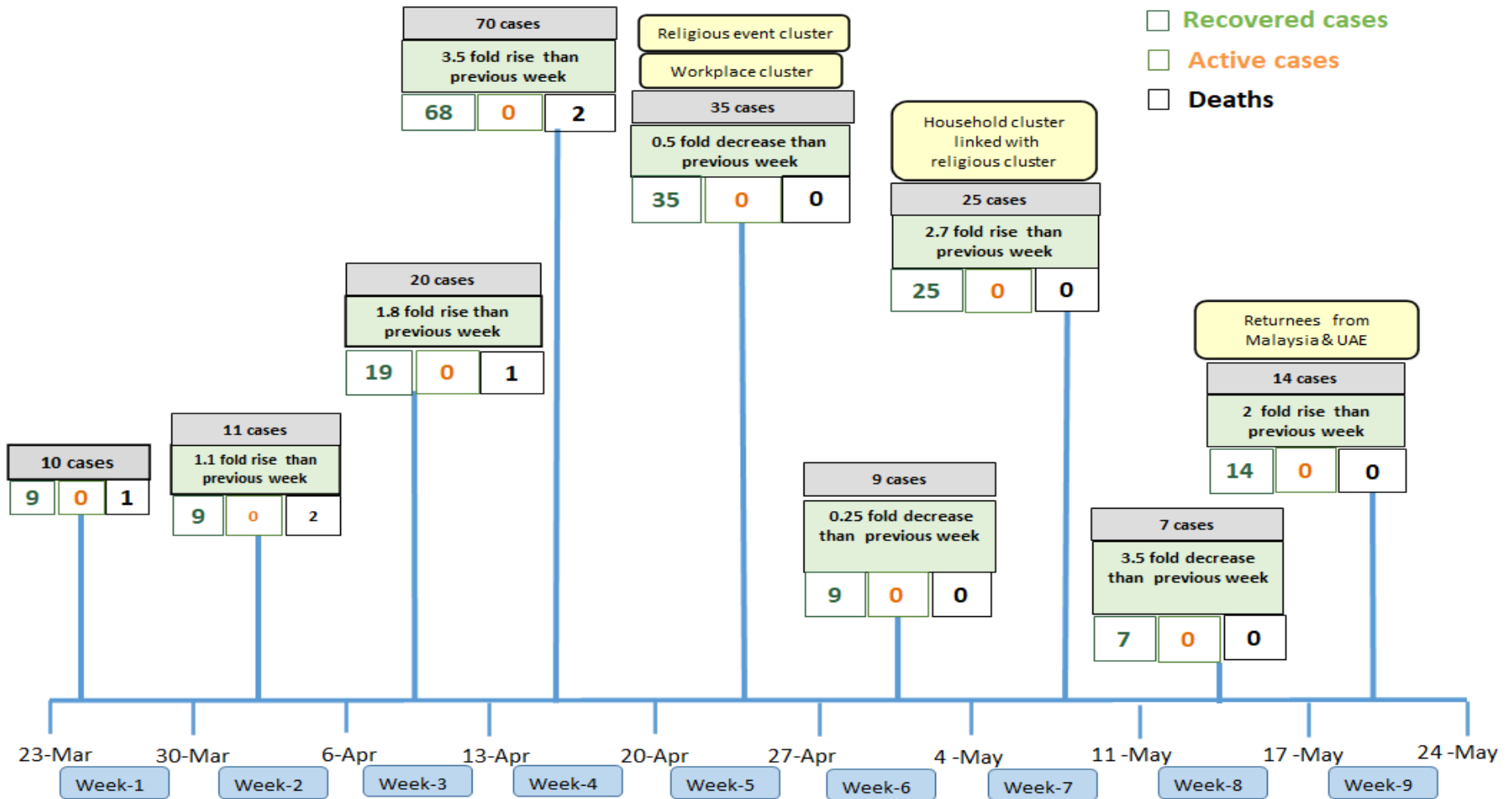


Total tested persons - 110,526

Total confirmed cases - 349

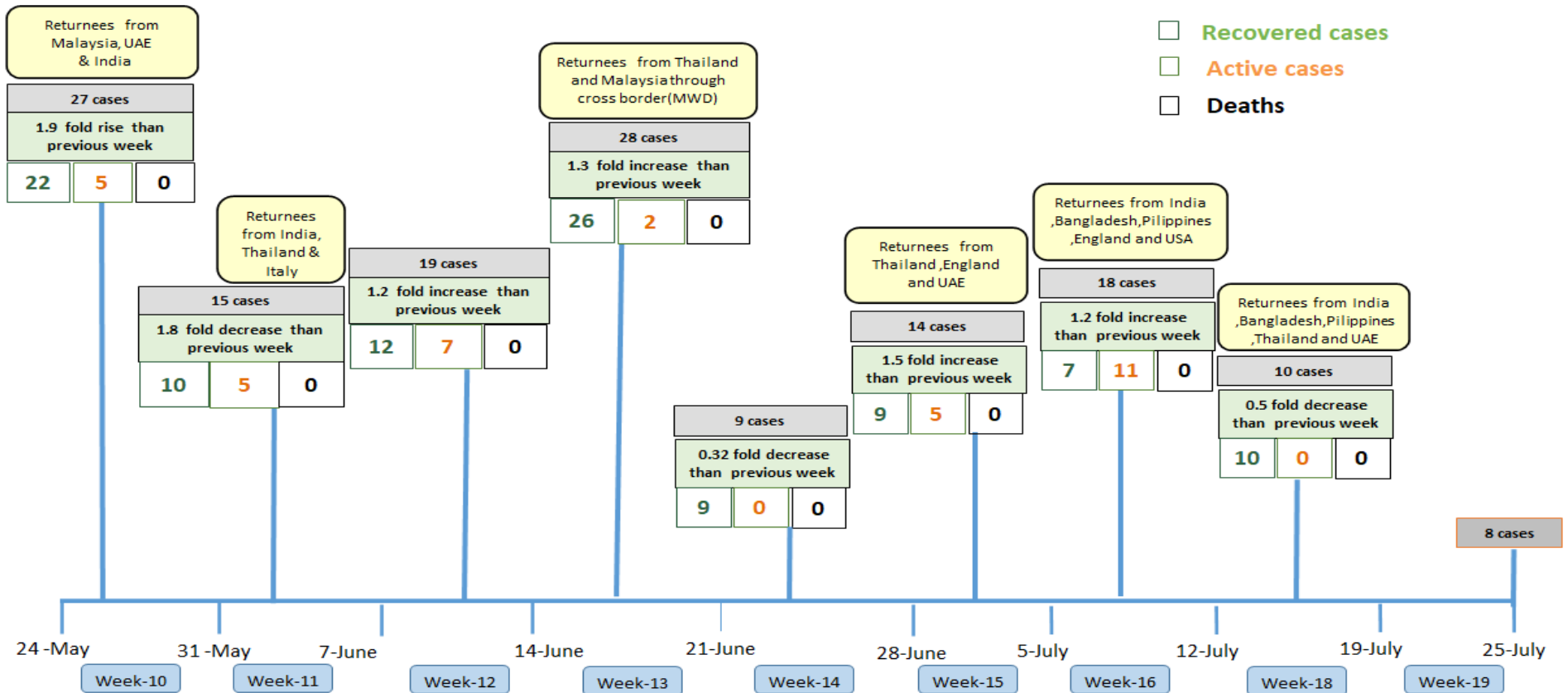
■ Tested person — Confirmed case

Summary of new confirmed cases detection after first two cases (as of 25.7.2020)



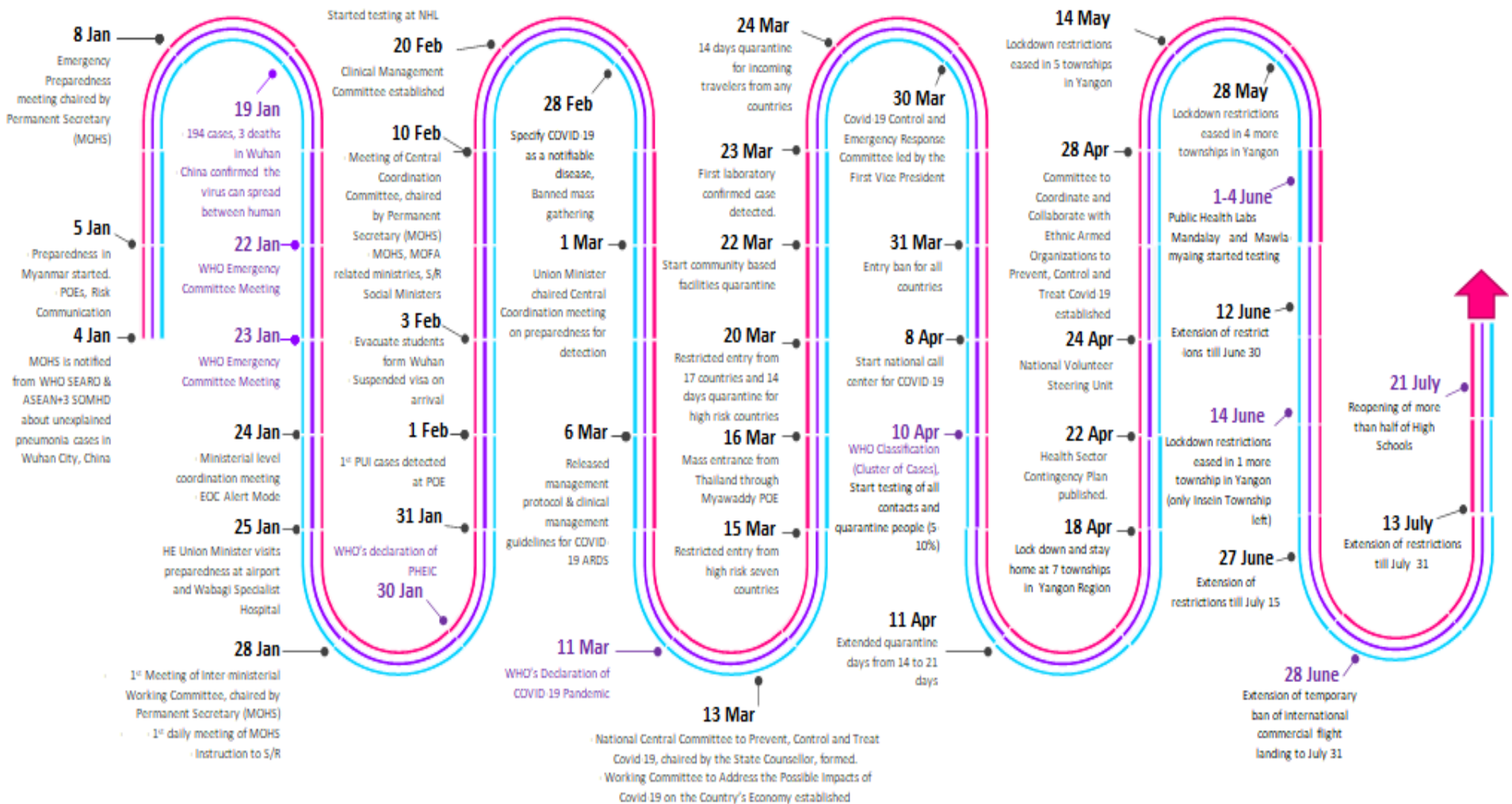
- Confirmed cases were detected as a peak in the 4th week after first confirmed cases due to the religious event cluster.
- Confirmed cases were decreased but still raised than the first 3 weeks due to the religious event cluster and workplace cluster.
- There were an increased in numbers of cases in the 7th week after the first two cases due to the household cluster linked with a religious cluster.
- Confirmed cases were detected by a nearly two-fold rise in the 9th and 10th weeks after the first two cases because of returnees coming back by relief flights.

Summary of new confirmed cases detection after first two cases (as of 25.7.2020)



- Confirmed cases were detected as a peak in the 4th week after first confirmed cases due to the religious event cluster.
- Confirmed cases were decreased but still raised than the first 3 weeks due to the religious event cluster and workplace cluster.
- There were an increased in numbers of cases in the 7th week after the first two cases due to the household cluster linked with a religious cluster.
- Confirmed cases were detected by a nearly two-fold rise in the 9th and 10th weeks after the first two cases because of returnees coming back by relief flights.

Timeline of Preparedness and Response to COVID-19 in Myanmar (as of 25.7.2020)



Hotline Number — 0673 420 268

Data source - CEU, DMS, NHL, PHL (MDY and MLM), DMR, DSGH, State and Region Health Departments