



# Ministry of Health and Sports (Myanmar)

## Department of Public Health

### Central Epidemiology Unit

(23 July 2020)

#### Coronavirus Disease 2019 (COVID-19)

Situation Report - 107

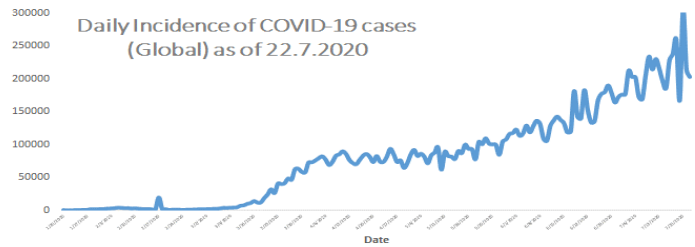
Data as reported by States and Regions by 11:30 PM MST 22 July 2020

Global Situation (WHO situation report - 184) data as of 14:30 MST 22 July 2020

**Confirmed cases**  
**14,765,256**

**Deaths**  
**612,054**

**Case Fatality Rate**  
**4.1 %**



#### Myanmar Situation

Total Tested

**106,673**

Confirmed Cases

**343**

Negative

**106,330**

Recovered

**280**

82.1% of Confirmed cases

Active

**57**

16.6% of Confirmed cases

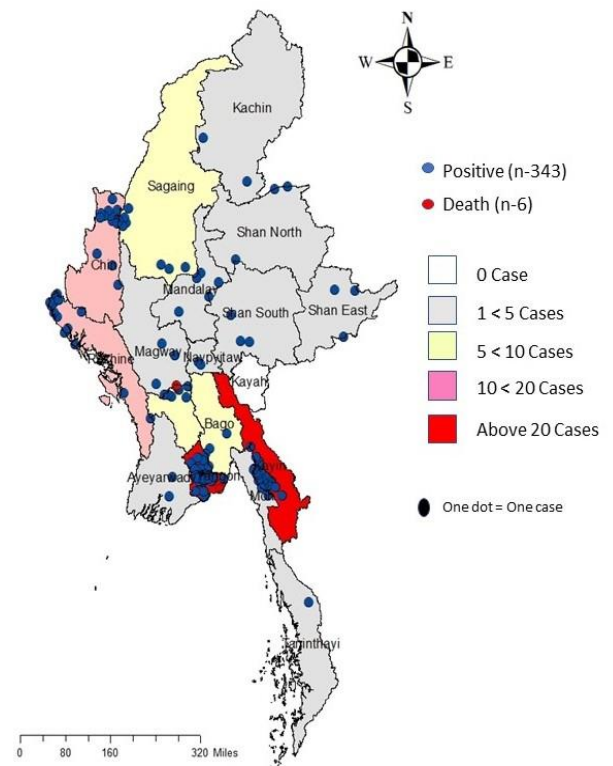
Death

**6**

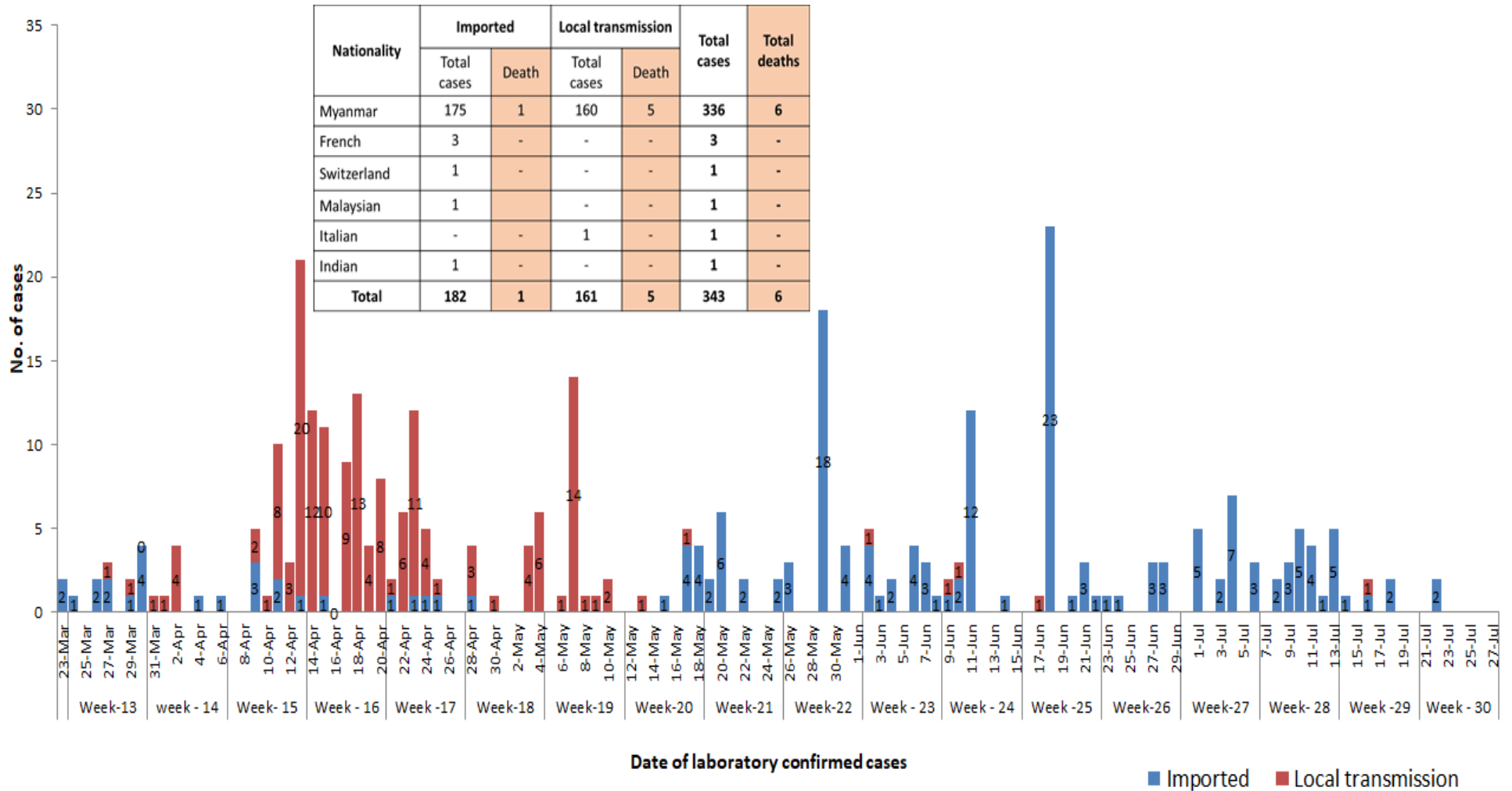
1.7% of Confirmed cases

No	State/Region	COVID –19 Confirmed case	Recovered	Deaths
1	Yangon	246(2 New)	193	5
2	Kayin	26	24	-
3	Rakhine	15	11	-
4	Chin	12	10	-
5	Sagaing	9	9	-
6	Bago	9	8	1
7	Shan (South)	4	4	-
8	Mandalay	4	3	-
9	Shan (East)	3	3	-
10	Shan (North)	3	3	-
11	Magway	3	3	-
12	Naypyitaw	2	2	-
13	Ayeyarwaddy	2	2	-
14	Kachin	2	2	-
15	Mon	2	2	-
16	Thanintharyi	1	1	-
17	Kayah	-	-	-
<b>Total</b>		<b>343(2 New)</b>	<b>280</b>	<b>6</b>

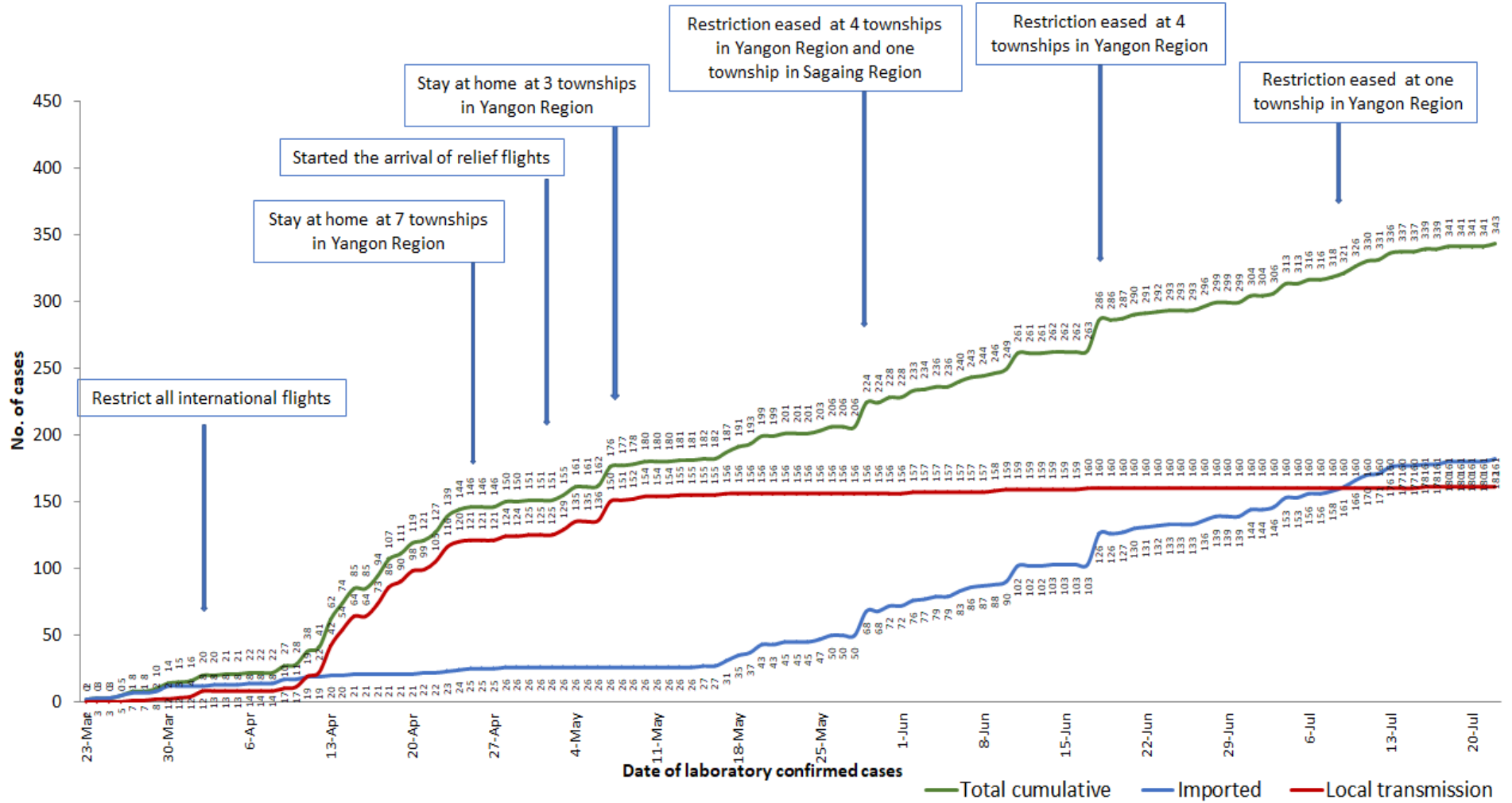
Map showing COVID-19 laboratory confirmed cases



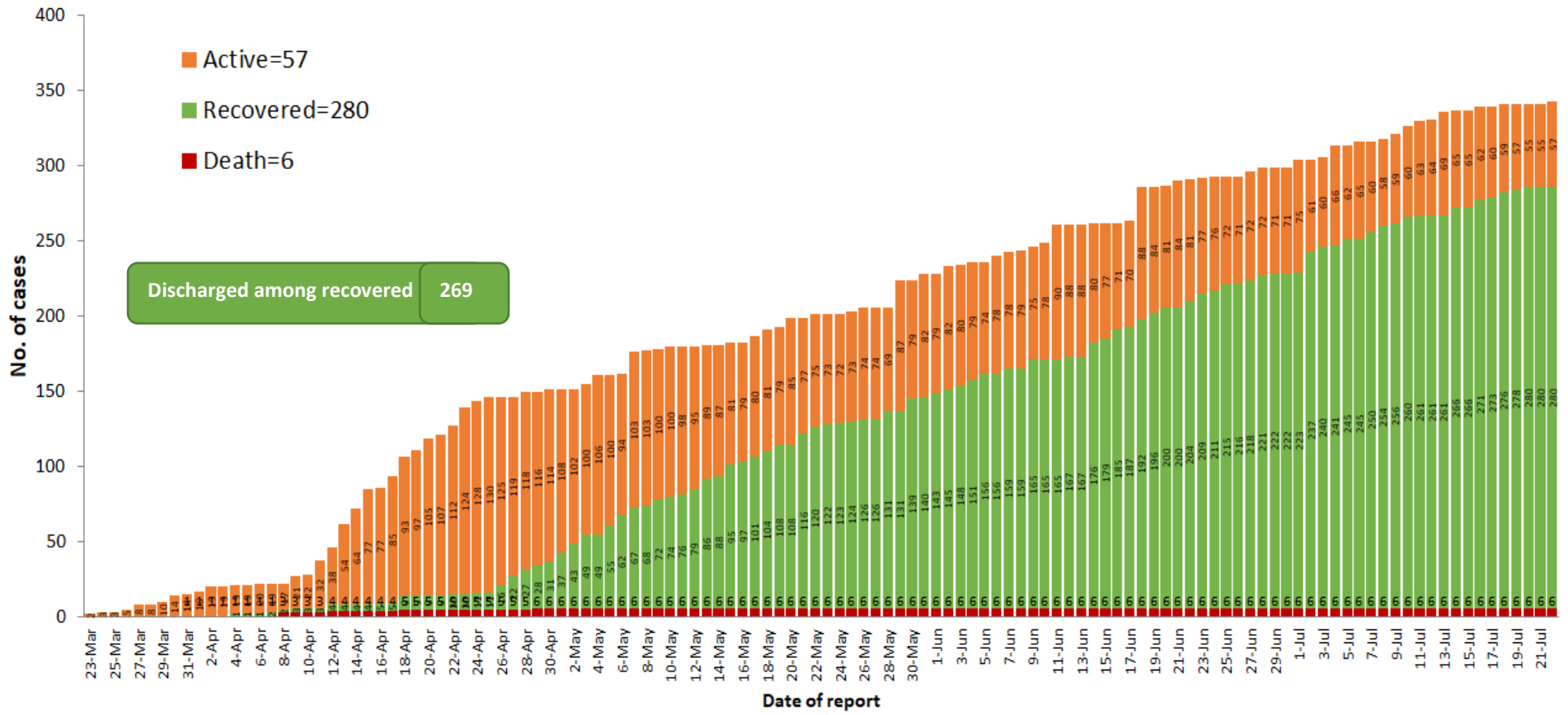
## COVID-19 confirmed cases by types of transmissions (as of 22.7.2020, 11:30 pm) n=343



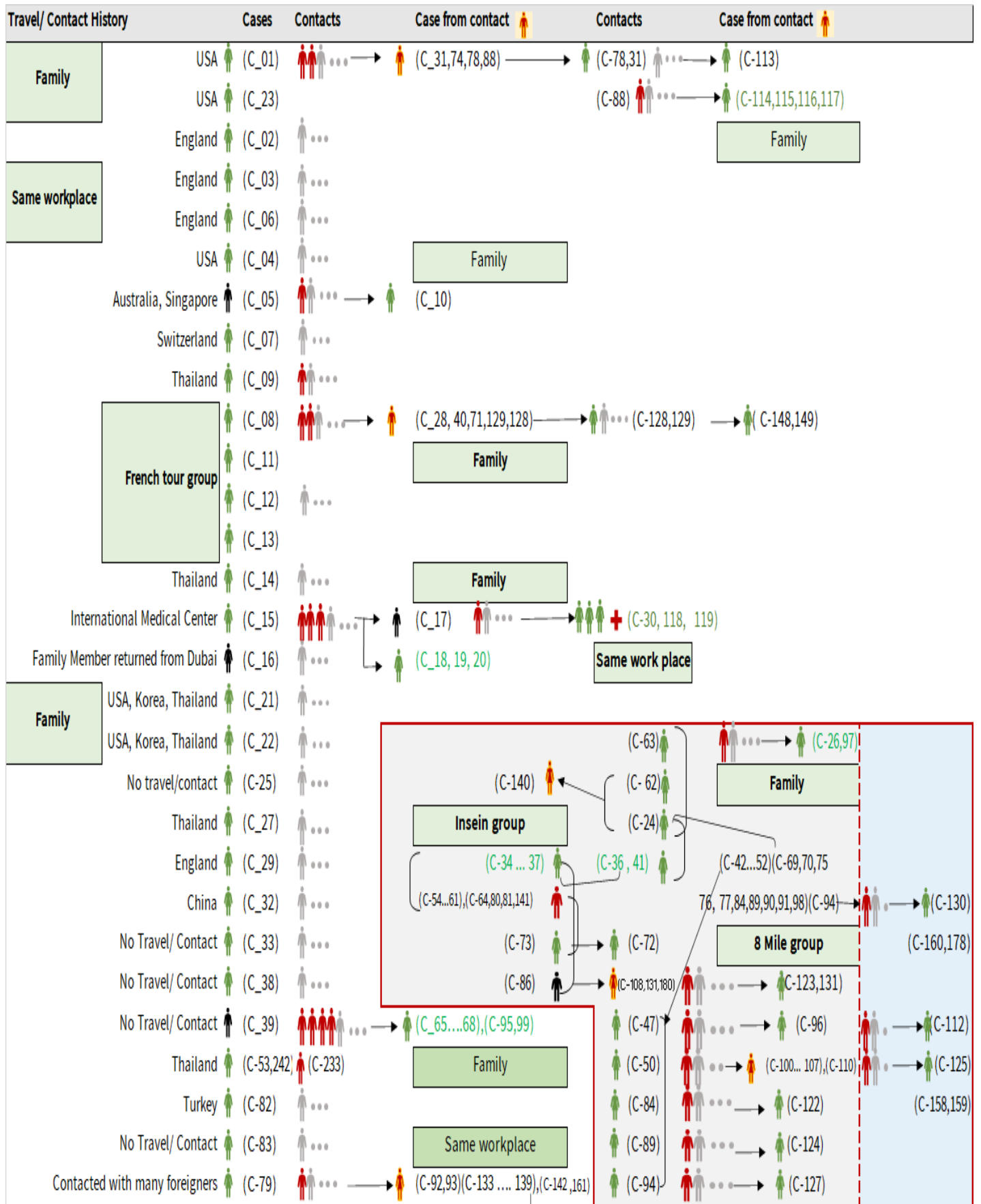
# Total laboratory confirmed cases by date (as of 23.7.2020, 11:30 pm), n= 343



## Cumulative Number of active confirmed cases, recovered and deaths (23.3.2020 – 22.7.2020), n (cumulative)=343



# Summary of COVID-19 confirmed cases (as of 22.7.2020), n (contacts)= 5,774



## Summary of COVID-19 confirmed cases (as of 22.7.2020), n (contacts)= 5,774

Travel/ Contact History	Cases	Contacts	Case from contact	Contacts	Case from contact
No Travel/ Contact	(C-85)	...			(C-110)
No travel / Contact	(C-87)	...	→ (C-126)		(C-28,40,42,43,44,45,46,48,49,51,52)
No travel / Contact	(C-109)	...	(C-139) →	(C-146)	(C-54,55,56,57,58,60,61,63,64,69,70)
No travel / Contact	(C-111)	...	(C-133,134,142) →	(C-147)	(C-71,74,75,76,77,80,81,88,90,91,92,93)
No travel/Contact	(C-120)	...			(C-98,100,101,102,103,104,105,106,107,108)
England	(C-317,327)	(C-121,302,303)			(C-133,134,135,136,137,138,139,140,141,142)
No travel/Contact	(C-132)	...			(C-151,152,153,154,157,158,159,160,161)
Dubai/Thailand	(C-143)	...			(C-164,165,167,168,170,171,172,174)
No travel/Contact	(C-144)	...			(C-178,184,189,191,193,205,207,216,217,218)
India	(C-145,204,209,210,213,215,220,221,223,224,229,225,227,228,252,255,259,296,299)				(C-226,233,234,235,237,246,253,258)
China	(C-150,230)				
Contact with religious event cluster	(C-162)	...	→ (C-151,152,153,154,157)	→ (C-165 ... 177)	(C-166,169,173,175,176,177)
No travel/contact	(C-155)	...	→ (C-163,164)	(C-163)	(C-177) → (C-179) → (C-181)
No travel/contact	(C-156)	...			
No travel/contact	(C-183)	...			
Malaysia	(C-184,189,273,280)	(C-182,185,186,191,188,190,187,200,201,232,275,282)			
UAE	(C-300,301,315,316,337,340)	(C-193,192,194,195,196,197,198,199,301,314)			
Italy	(C-243,202)				
No travel/Contact	(C-231)				
Bangladesh	(C-234,244,247,250,262,293,308,309,310,325,326,334)	(C-244,245,247,248,250,262,291,292)			
No travel/contact	(C-245)	...			
No travel/contact	(C-249)				
No travel/contact	(C-263)	...			
Thailand	(C-269,279,332,333,335,336,338)	(C-264,265,266,267,268,270,271,272,273,274,276,277,278,280,281,283,284,285,286,287,294,304,312)			
Quata	(C-288)	(C-289,290)			
India	(C-203,205.....214,216...219,221.... 229,235...240,241,246,251,253,254...258,260,261,295,297,298,305,306,307,318,322,323,324,328,329,330)				
Lao	(C-311)	...			
Singapore	(C-313)	...			
Philippines	(C-319,320,321,342,343)	...			
USA	(C-331)	...			
No travel/contact	(C-339)	...			

### Summary of current situation

Type	New (21.7.2020-22.7.2020)	Total (on 22.7.2020)
Suspected and Person Under Investigation (PUI)	29	187
Hospital Quarantine	5	56
Facility Quarantine	1,035	21,660

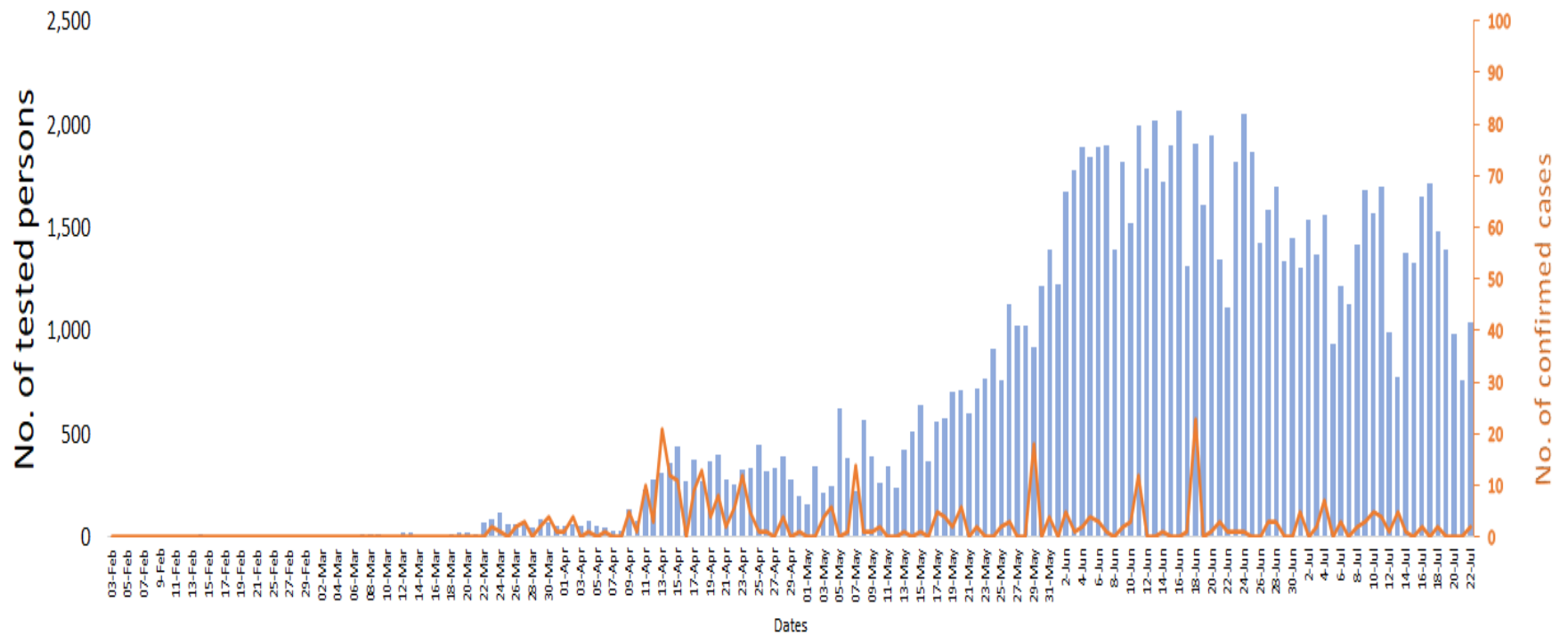
#### Person under Investigation (PUI) by State/Region hospitals (31.1.2020 – 22.7.2020) n= 6,611

No.	State/Region	PUI
1	Yangon	3,336
2	Mandalay	1,338
3	Kayin	283
4	Mon	268
5	Shan (N)	225
6	Magway	210
7	Bago	180
8	Shan (E)	123
9	Ayeyarwaddy	102
10	Shan (S)	102
11	Sagaing	90
12	Kayah	80
13	Thanintharyi	72
14	Rakhine	69
15	Naypyitaw	64
16	Kachin	40
17	Chin	29
<b>Total</b>		6,611

#### No. of Facility Quarantine sites and Quarantined people on 22.7.2020

No.	State/Region	No. of facilities	Total no. of quarantine
1	Yangon	63	3,261
2	Bago	266	2,980
3	Mon	316	2,874
4	Kayin	446	2,852
5	Tanintharyi	189	1,873
6	Magway	304	1,711
7	Mandalay	86	1,083
8	Sagaing	177	1,042
9	Rakhine	279	911
10	Kachin	423	735
11	Ayeyarwaddy	167	730
12	Shan South	95	687
13	Naypyitaw	2	367
14	Shan North	263	211
15	Kayah	18	142
16	Chin	13	127
17	Shan East	11	74
<b>Total</b>		3,118	21,660

## COVID-19 confirmed cases among tested by date (as of 22.7.2020)



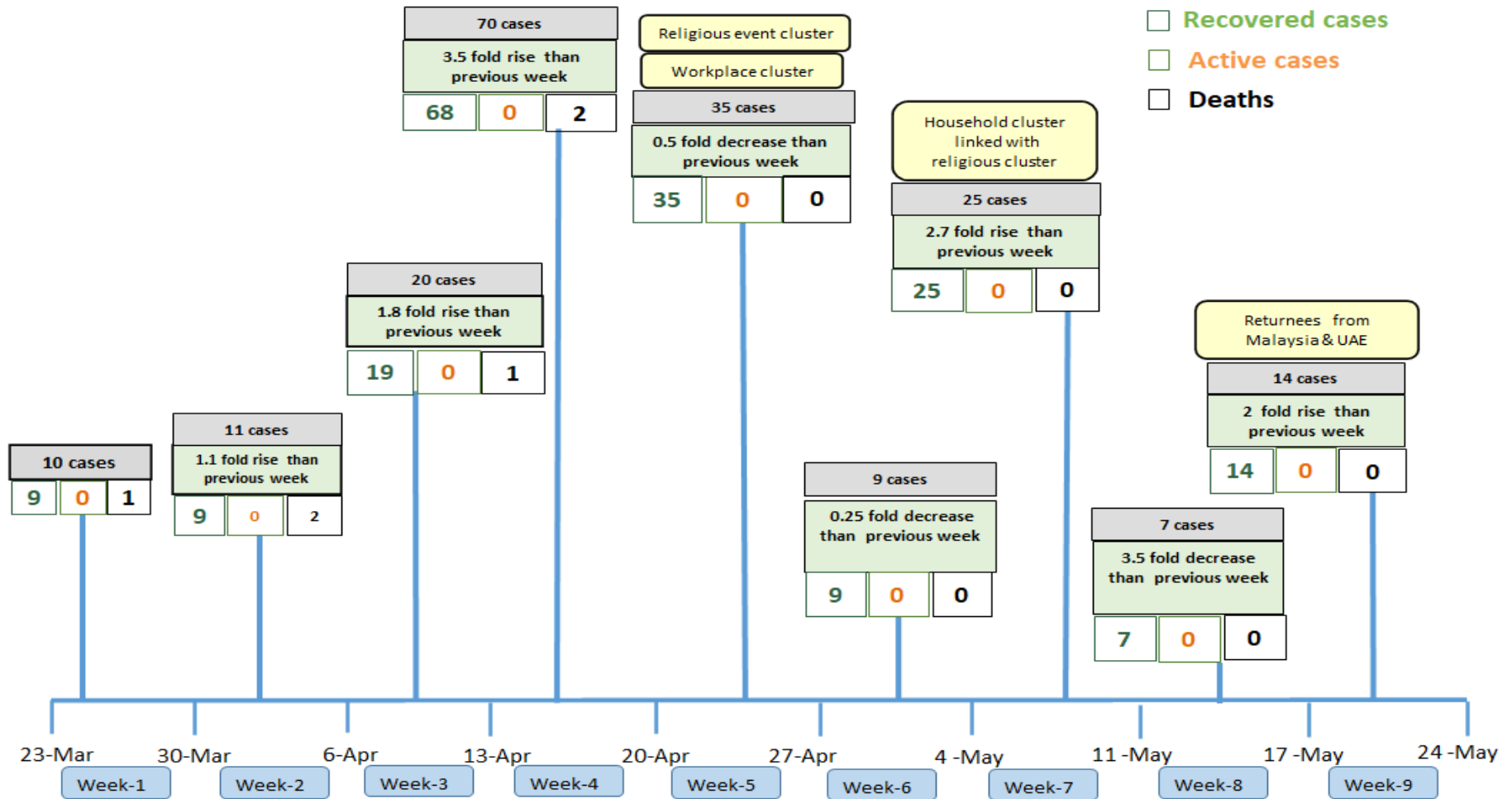
Total tested persons - 106,673

Total confirmed cases - 343

■ Tested person    — Confirmed case

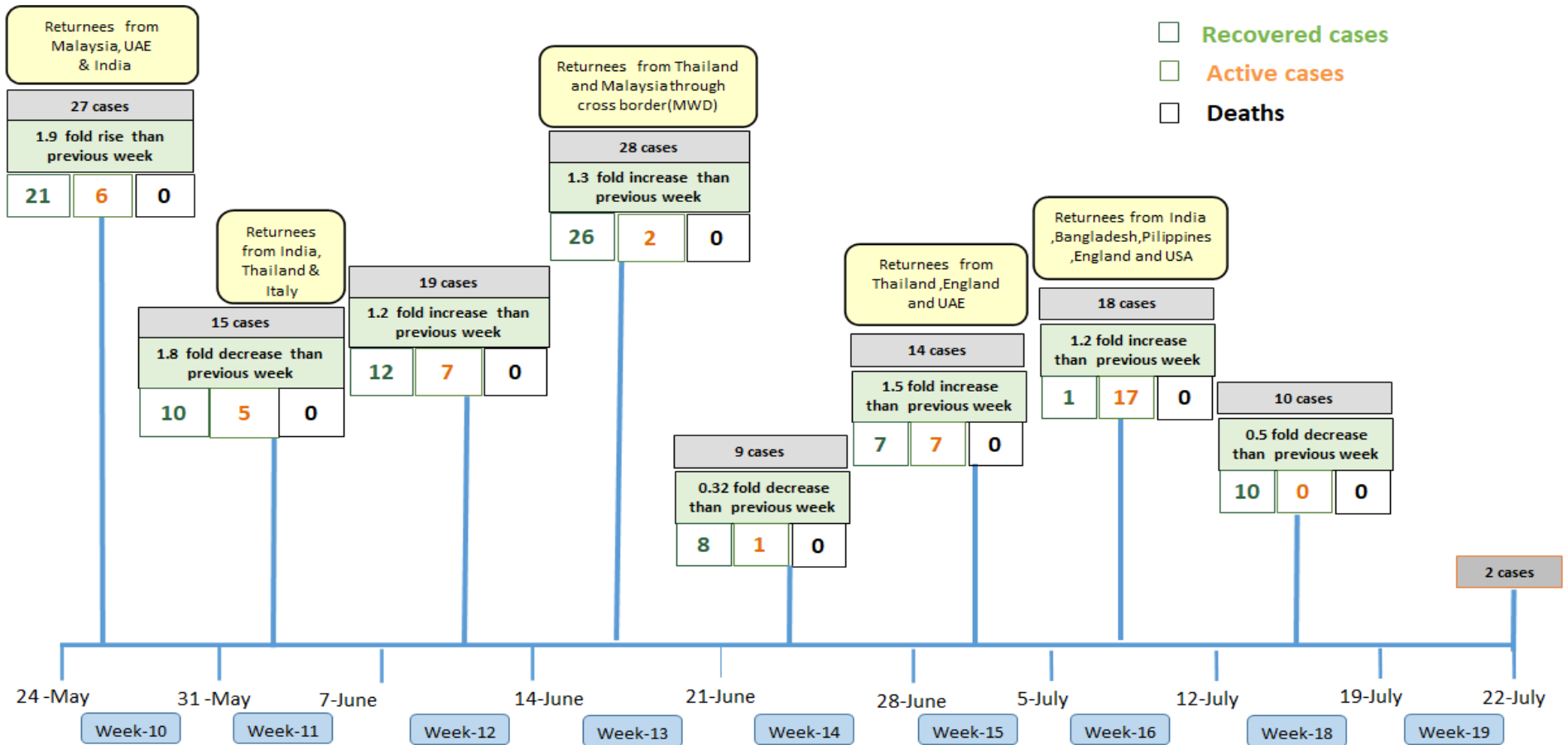


## Summary of new confirmed cases detection after first two cases (as of 22.7.2020)



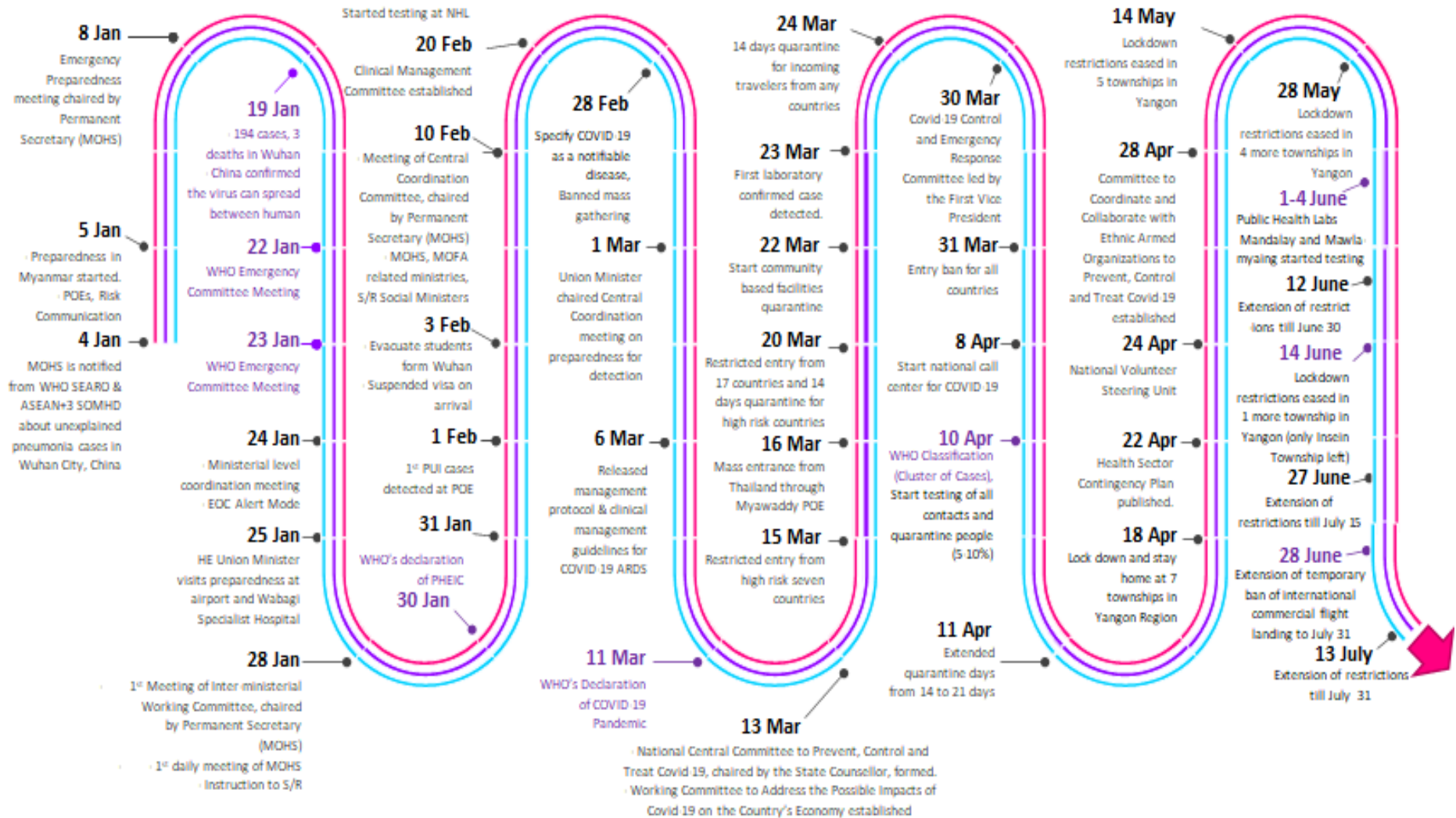
- Confirmed cases were detected as a peak in the 4th week after first confirmed cases due to the religious event cluster.
- Confirmed cases were decreased but still raised than the first 3 weeks due to the religious event cluster and workplace cluster.
- There were an increased in numbers of cases in the 7th week after the first two cases due to the household cluster linked with a religious cluster.
- Confirmed cases were detected by a nearly two-fold rise in the 9th and 10th weeks after the first two cases because of returnees coming back by relief flights.

## Summary of new confirmed cases detection after first two cases (as of 22.7.2020)



- Confirmed cases were detected as a peak in the 4th week after first confirmed cases due to the religious event cluster.
- Confirmed cases were decreased but still raised than the first 3 weeks due to the religious event cluster and workplace cluster.
- There were an increased in numbers of cases in the 7th week after the first two cases due to the household cluster linked with a religious cluster.
- Confirmed cases were detected by a nearly two-fold rise in the 9th and 10th weeks after the first two cases because of returnees coming back by relief flights.

# Timeline of Preparedness and Response to COVID-19 in Myanmar (as of 22.7.2020)



Hotline Number— 0673 420 268

Data source - CEU, DMS, NHL, PHL (MDY and MLM), DMR, DSGH, State and Region Health Departments