



Ministry of Health and Sports (Myanmar)

Department of Public Health

Central Epidemiology Unit

(21 August 2020)

Coronavirus Disease 2019 (COVID-19)

Situation Report - 136

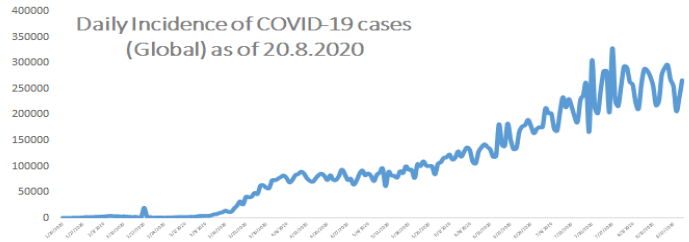
Data as reported by States and Regions by 3:00 AM MST 21 August 2020

Global Situation (WHO situation report - 213) data as of 14:30 MST 20 August 2020

Confirmed cases
22,256,220

Deaths
782,456

Case Fatality Rate
3.5 %



Myanmar Situation

Total Tested

142,516

Confirmed Cases

409

Negative

142,107

Recovered

337

82.4% of Confirmed cases

Active

66

16.1% of Confirmed cases

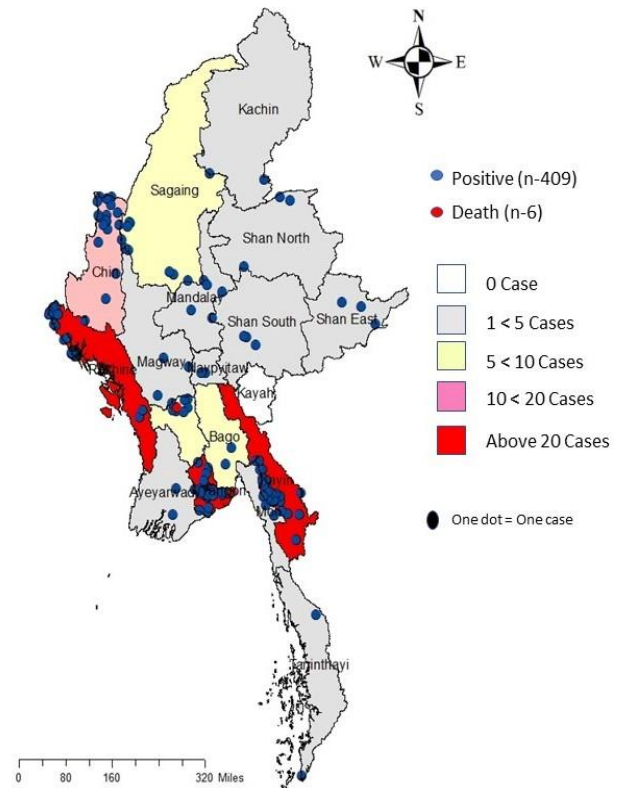
Death

6

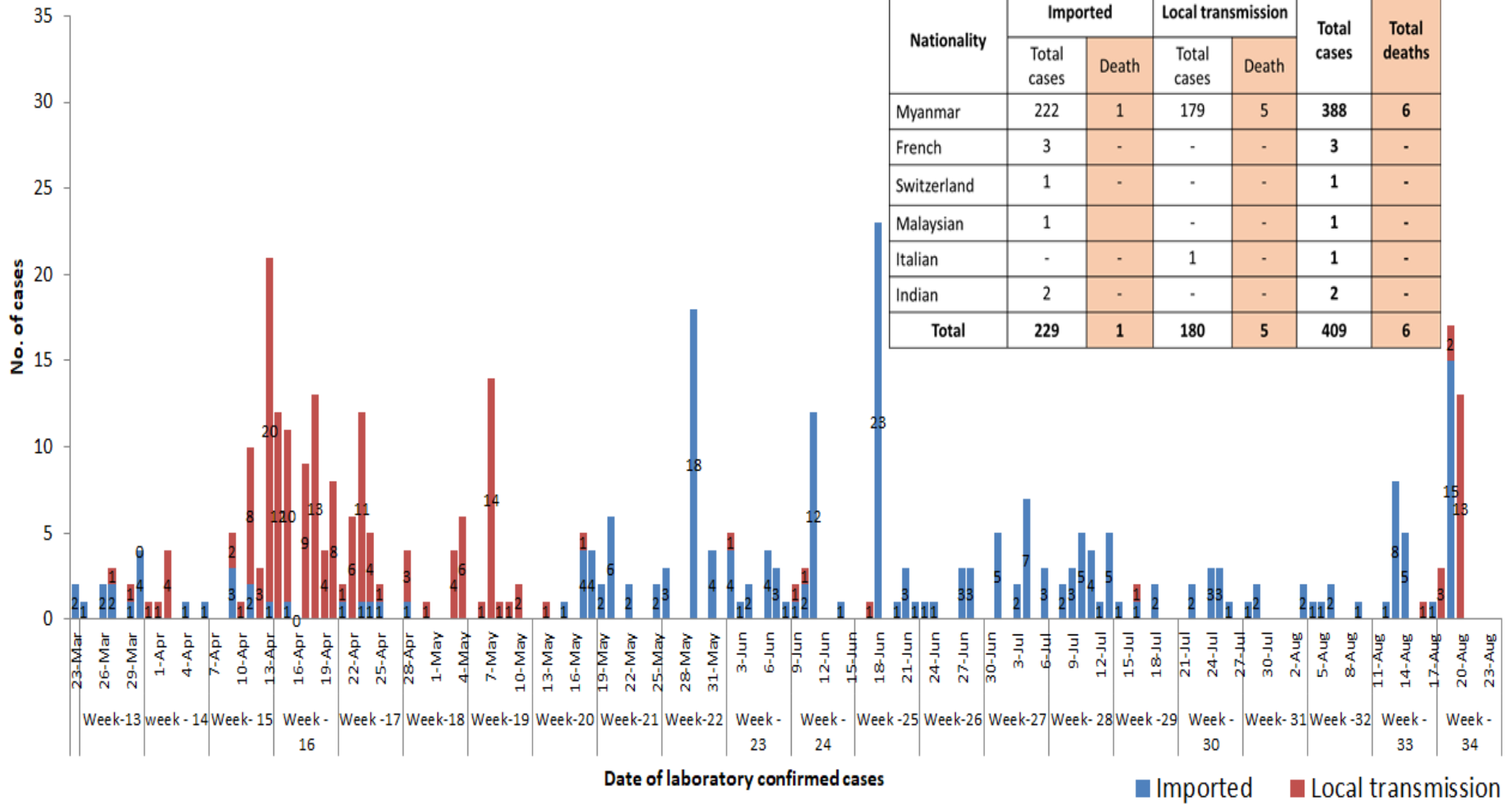
1.5% of Confirmed cases

No	State/Region	COVID -19 Confirmed case	Recovered	Deaths
1	Yangon	283	235(4 New)	5
2	Rakhine	35(13 New)	16	-
3	Kayin	29	29	-
4	Chin	17	3	-
5	Sagaing	9	9	-
6	Bago	9	8	1
7	Shan (South)	4	4	-
8	Mandalay	4	4	-
9	Shan (East)	3	3	-
10	Shan (North)	3	3	-
11	Magway	3	3	-
12	Naypyitaw	2	2	-
13	Ayeyarwaddy	2	2	-
14	Kachin	2	2	-
15	Mon	2	2	-
16	Thanintharyi	2	2	-
17	Kayah	-	-	-
Total		409(13 New)	337(4 New)	6

Map showing COVID-19 laboratory confirmed cases

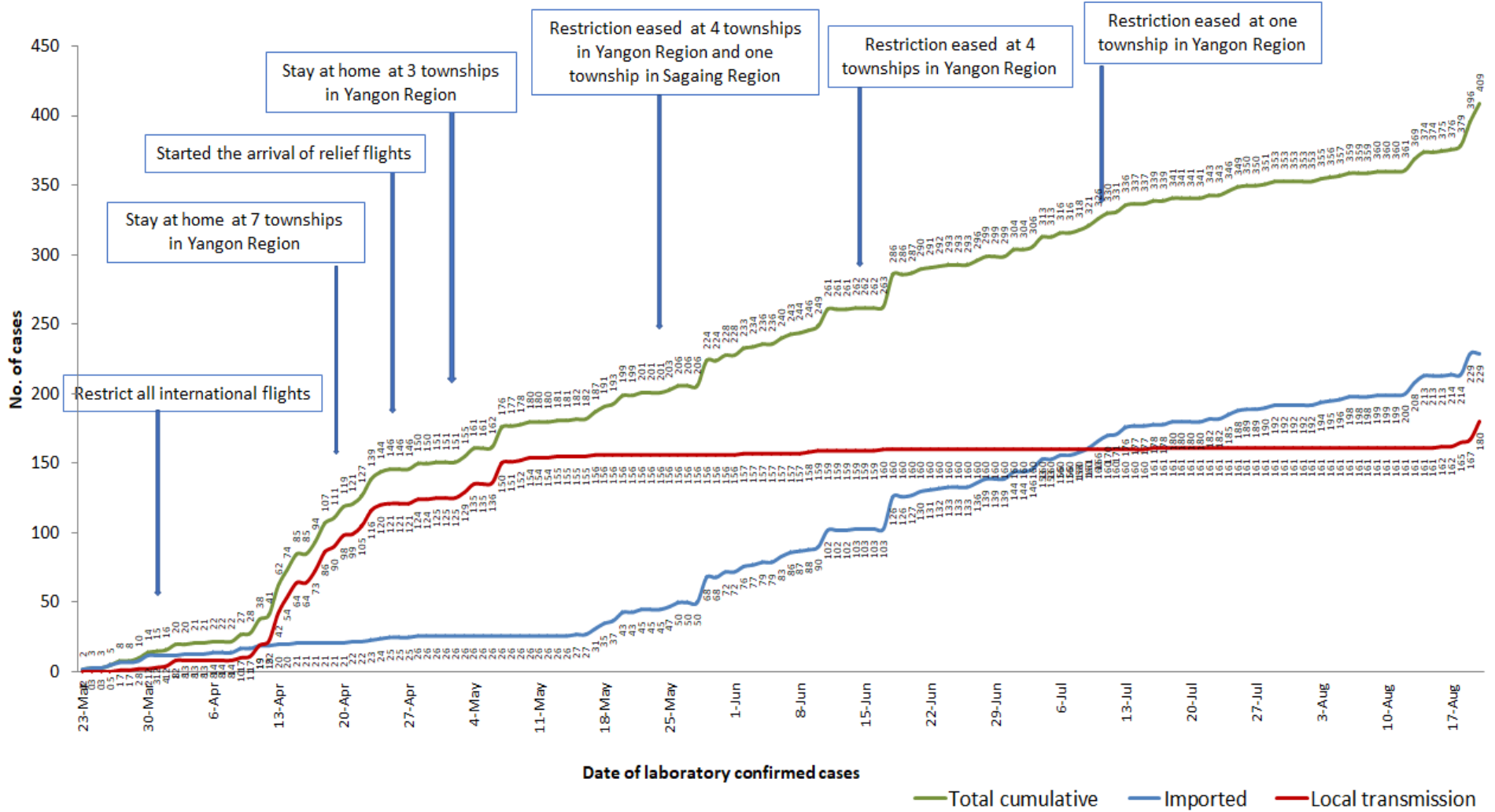


COVID-19 confirmed cases by types of transmissions (as of 21.8.2020, 3:00 am) n=409

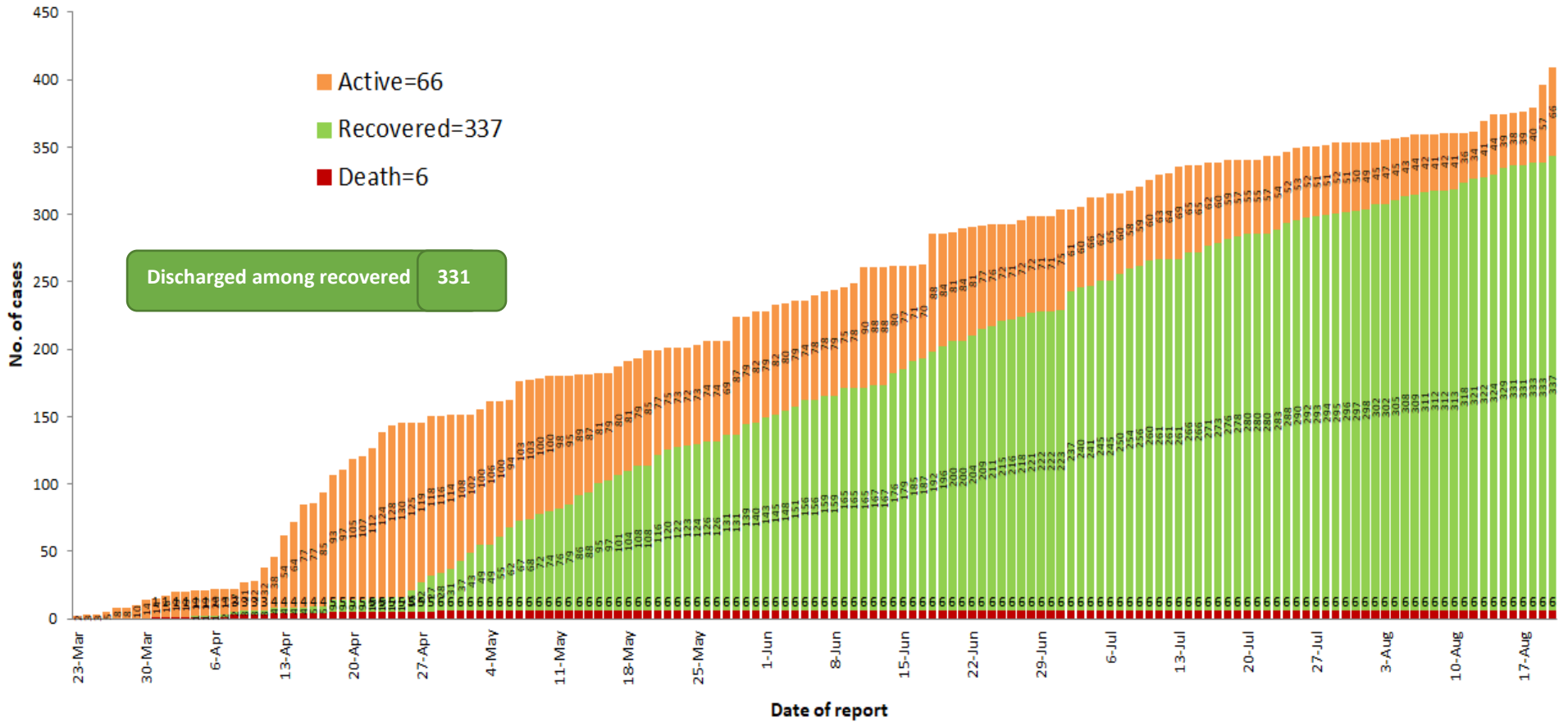


Nationality	Imported		Local transmission		Total cases	Total deaths
	Total cases	Death	Total cases	Death		
Myanmar	222	1	179	5	388	6
French	3	-	-	-	3	-
Switzerland	1	-	-	-	1	-
Malaysian	1	-	-	-	1	-
Italian	-	-	1	-	1	-
Indian	2	-	-	-	2	-
Total	229	1	180	5	409	6

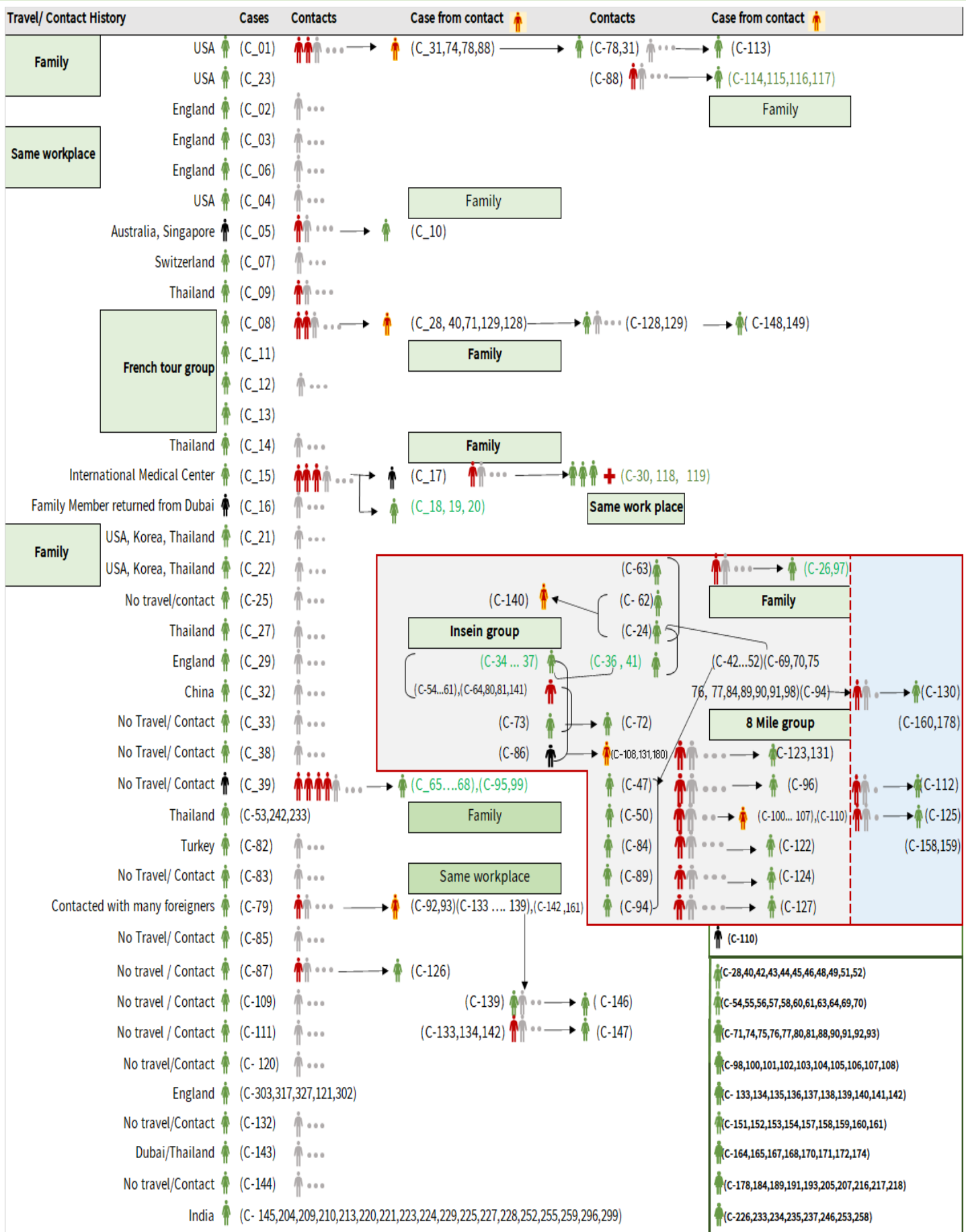
Total laboratory confirmed cases by date (as of 21.8.2020, 3:00 am), n= 409



Cumulative Number of active confirmed cases, recovered and deaths (23.3.2020 – 20.8.2020), n (cumulative)=409



Summary of COVID-19 confirmed cases (as of 20.8.2020), n (contacts)= 5,939



Summary of COVID-19 confirmed cases (as of 20.8.2020), n (contacts)= 5,939

Travel/ Contact History	Cases	Contacts	Case from contact	Contacts	Case from contact
China	(C-150,230)			Household	
Contact with religious event cluster	(C- 162)		(C-151,152,153,154,157)	(C-165 177)	(C-166,169,173,175,176,177)
No travel/contact	(C-155)		(C-163,164)	(C-177)	(C-179)
No travel/contact	(C-156)				
No travel/contact	(C- 183)				
Malaysia	(C-184,189,273,280)		(C-182,185,186,191,188,190,187,200,201,232,275,282,351,353)		
UAE	(C-301,364,365,366,367,368,369,371)		C-193,192,194,195,196,197,198,199,300,301,314,315,316,337,340)		
Italy	(C-243,202)				
No travel/Contact	(C- 231)				
Bangladesh	(C-234,244,247,250,262)		(C-244,245,247,248,250,262,291,292,293,308,309,310,325,326,334,348)		
No travel/contact	(C-245)				
No travel/contact	(C-249)				
No travel/contact	(C-263)				
Thailand	(C-333)		(C-264,265,266,267,268,269,270,271,272,273,274,276,277,278,279,280,281,283,284,285,286,287,294,304,312,332,335,336,338,346,349,352)		
Quata	(C-288,289,290,354,355)				
India	(C-205.....214,216...219,222.... 229,....239,246,253...258,295,297,298,307,322,323,324,345,357,358,359,361,372,373,374,380.....393)				
Lao	(C-311)				
Singapore	(C-376)		(C-313)		
Philippines	(C-319,394)		(C-320,321,342,343)		
USA	(C-347,370)		(C-331,350,360)		
No travel/contact	(C-339)				
Sudan	(C-356)				
India	(C-203,240,241,251,254,256,260,328,329,330,261,299,305,341,344)				
Japan	(C-362,363)				
No travel/Contact	(C-375)			1' contact (C-395)	2' contact (C-398)
No travel/Contact	(C-377)			2' contact	
No travel/Contact	(C-396)				
No travel/Contact	(C-397)				
No travel/Contact	(C-399)				
<div style="border: 1px solid black; padding: 5px; display: inline-block;"> C-378,405,408,409 C-379 family cluster C-400,401,402,403,404 C-406,407 family cluster </div>					

Summary of current situation

Type	New (19.8.2020-20.8.2020)	Total (on 20.8.2020)
Suspected and Person Under Investigation (PUI)	24	141
Hospital Quarantine	2	33
Facility Quarantine	958	19,259

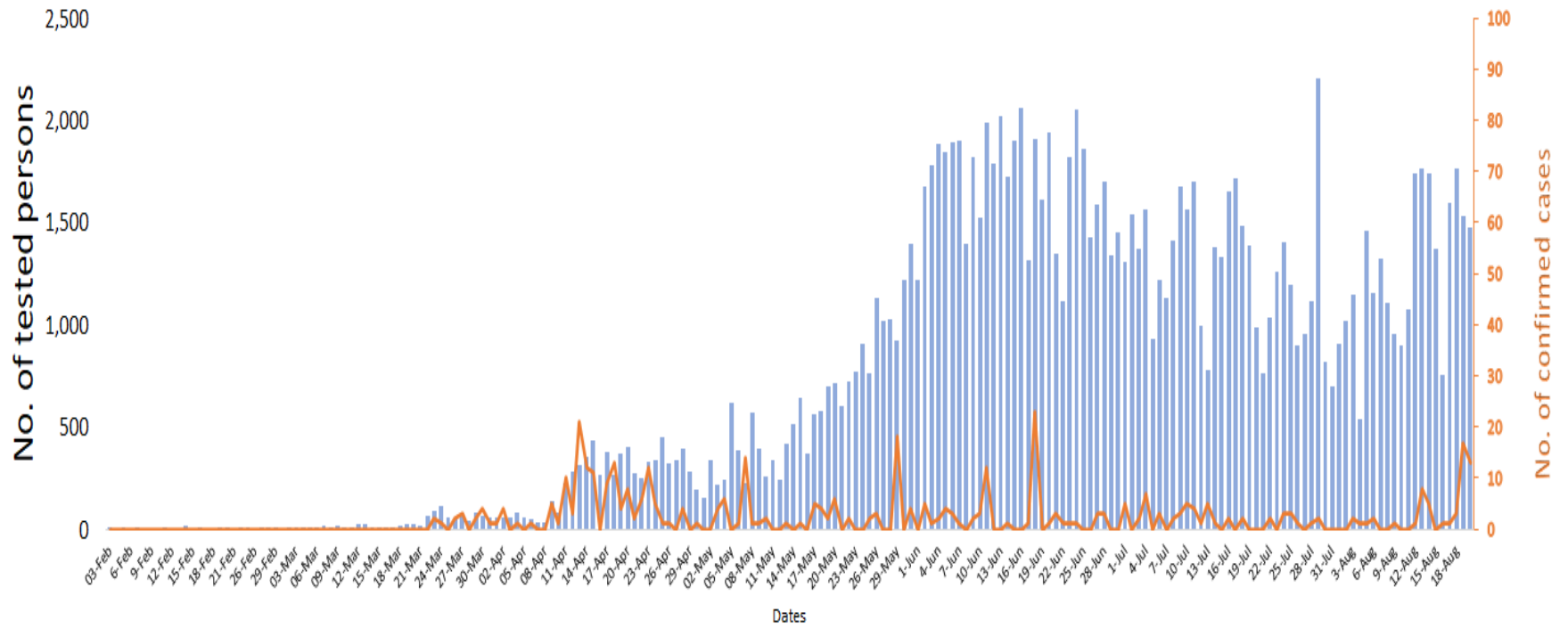
Person under Investigation (PUI) by State/Region hospitals (31.1.2020 – 20.8.2020) n= 7,167

No.	State/Region	PUI
1	Yangon	3574
2	Mandalay	1491
3	Kayin	345
4	Mon	289
5	Shan (N)	256
6	Magway	228
7	Bago	181
8	Shan (E)	130
9	Shan (S)	106
10	Ayeyarwaddy	104
11	Sagaing	90
12	Kayah	81
13	Thanintharyi	80
14	Rakhine	74
15	Naypyitaw	65
16	Kachin	43
17	Chin	30
Total		7,167

No. of Facility Quarantine sites and Quarantined people on 20.8.2020

No.	State/Region	No. of facilities	Total no. of quarantine
1	Yangon	67	4257
2	Mon	259	2779
3	Bago	188	2323
4	Kayin	392	2272
5	Tanintharyi	189	1692
6	Magway	407	1216
7	Mandalay	69	993
8	Sagaing	168	861
9	Rakhine	227	735
10	Shan South	80	618
11	Ayeyarwaddy	73	468
12	Kachin	90	466
13	Naypyitaw	3	302
14	Kayah	18	90
15	Shan North	267	83
16	Chin	20	57
17	Shan East	7	47
Total		2,524	19,259

COVID-19 confirmed cases among tested by date (as of 20.8.2020)

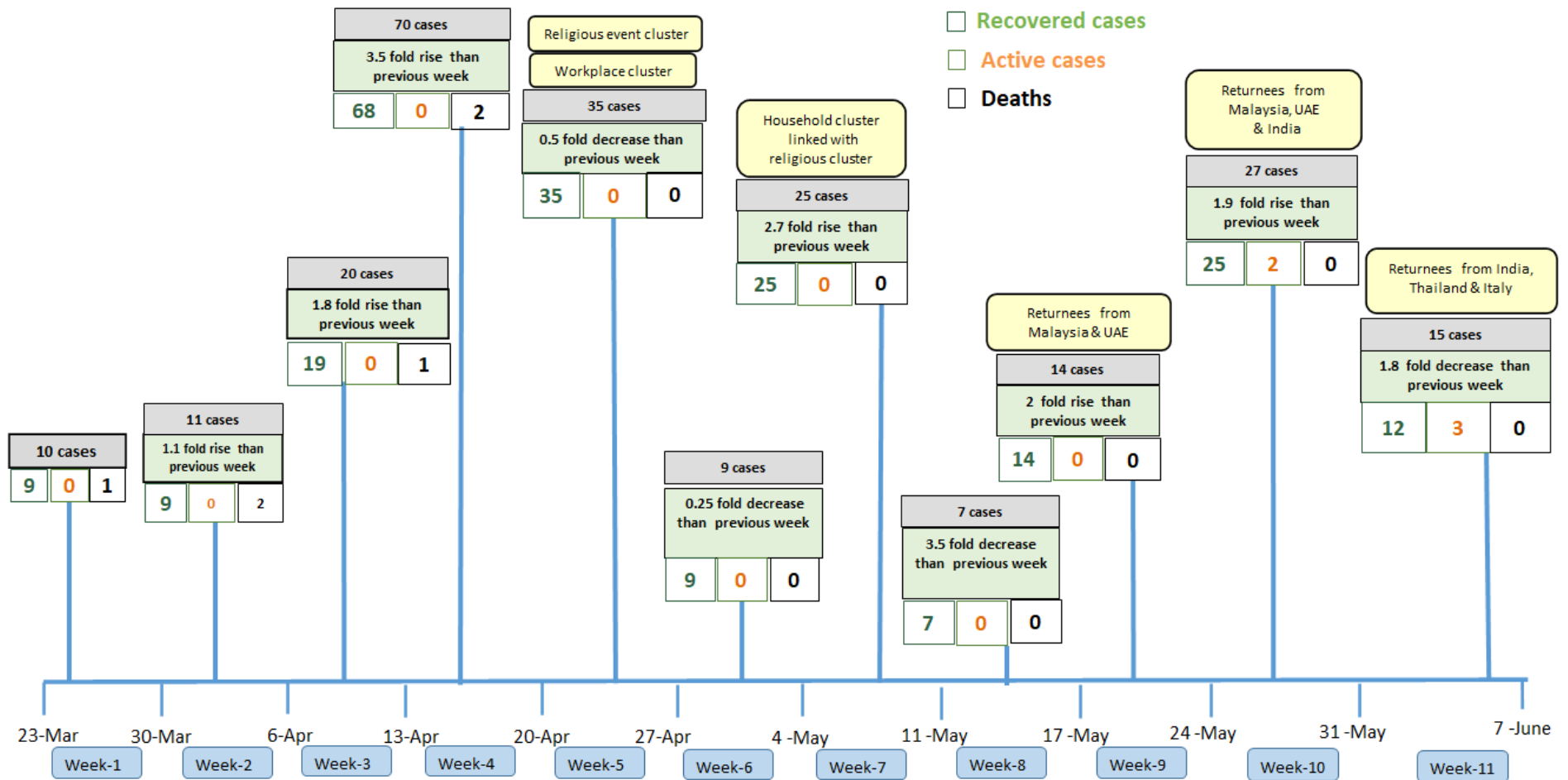


Total tested persons - 142,516

Total confirmed cases - 409

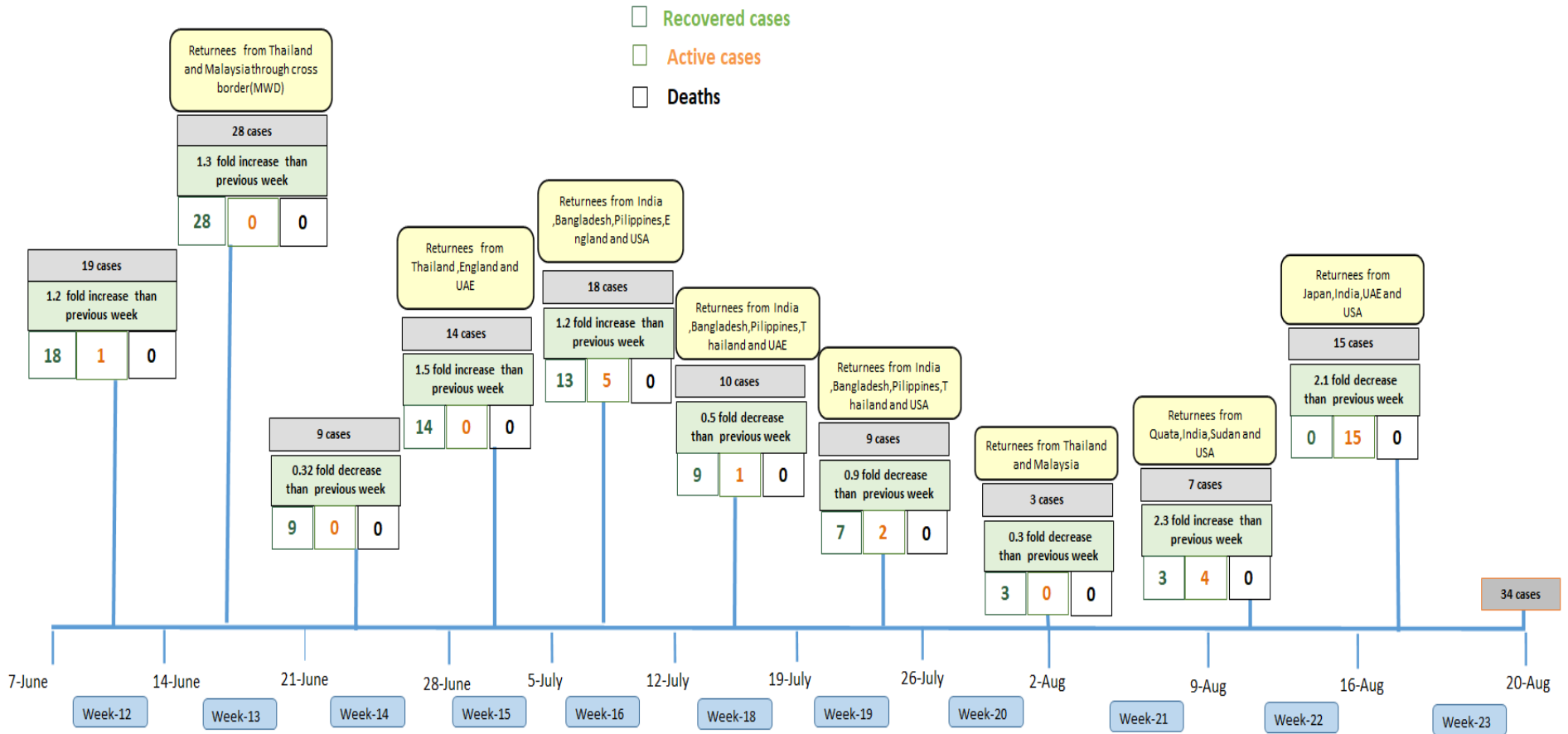
■ Tested person — Confirmed case

Summary of new confirmed cases detection after first two cases (as of 20.8.2020)



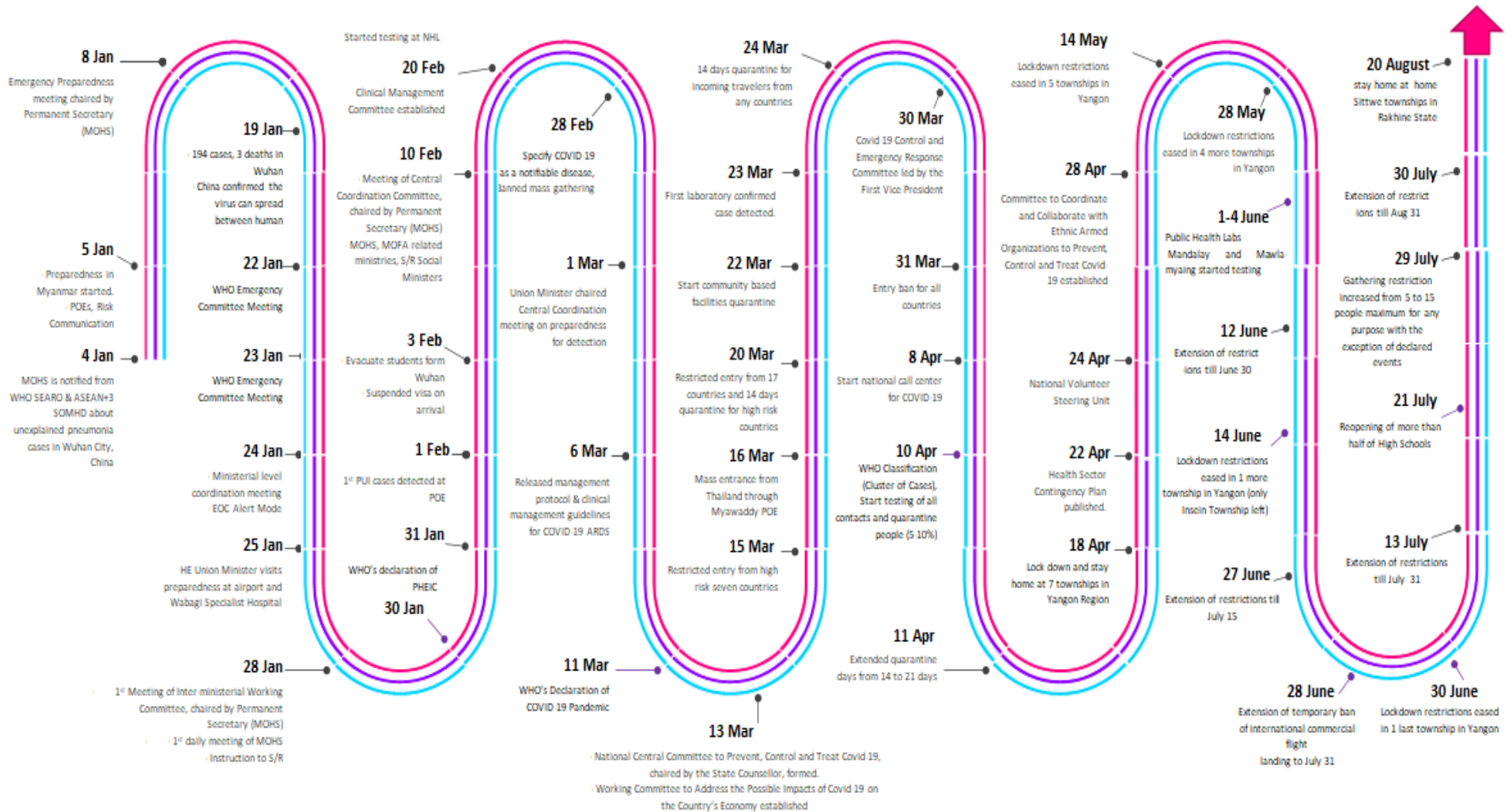
- Confirmed cases were detected as a peak in the 4th week after first confirmed cases due to the religious event cluster.
- Confirmed cases were decreased but still raised than the first 3 weeks due to the religious event cluster and workplace cluster.
- There were an increased in numbers of cases in the 7th week after the first two cases due to the household cluster linked with a religious cluster.
- Confirmed cases were detected by a nearly two-fold rise in the 9th and 10th weeks after the first two cases because of returnees coming back by relief flights.

Summary of new confirmed cases detection after first two cases (as of 20.8.2020)



- Confirmed cases were detected as a peak in the 4th week after first confirmed cases due to the religious event cluster.
- Confirmed cases were decreased but still raised than the first 3 weeks due to the religious event cluster and workplace cluster.
- There were an increased in numbers of cases in the 7th week after the first two cases due to the household cluster linked with a religious cluster.
- Confirmed cases were detected by a nearly two-fold rise in the 9th and 10th weeks after the first two cases because of returnees coming back by relief flights.

Timeline of Preparedness and Response to COVID-19 in Myanmar (as of 20.8.2020)



Hotline Number — 0673 420 268

Data source - CEU, DMS, NHL, PHL (MDY and MLM), DMR, DSGH, State and Region Health Departments