



# Ministry of Health and Sports (Myanmar)

## Department of Public Health

### Central Epidemiology Unit

(22 August 2020)

#### Coronavirus Disease 2019 (COVID-19)

Situation Report - 137

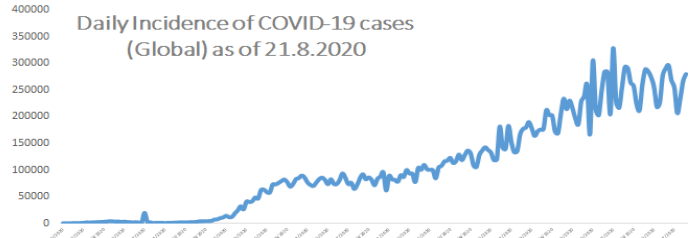
Data as reported by States and Regions by 2:00 AM MST 22 August 2020

**Global Situation (WHO situation report - 214) data as of 14:30 MST 21 August 2020**

**Confirmed cases**  
**22,536,278**

**Deaths**  
**789,197**

**Case Fatality Rate**  
**3.5 %**



#### Myanmar Situation

Total Tested

**144,054**

Confirmed Cases

**435**

Negative

**143,619**

Recovered

**338**

77.7% of Confirmed cases

Active

**91**

20.9% of Confirmed cases

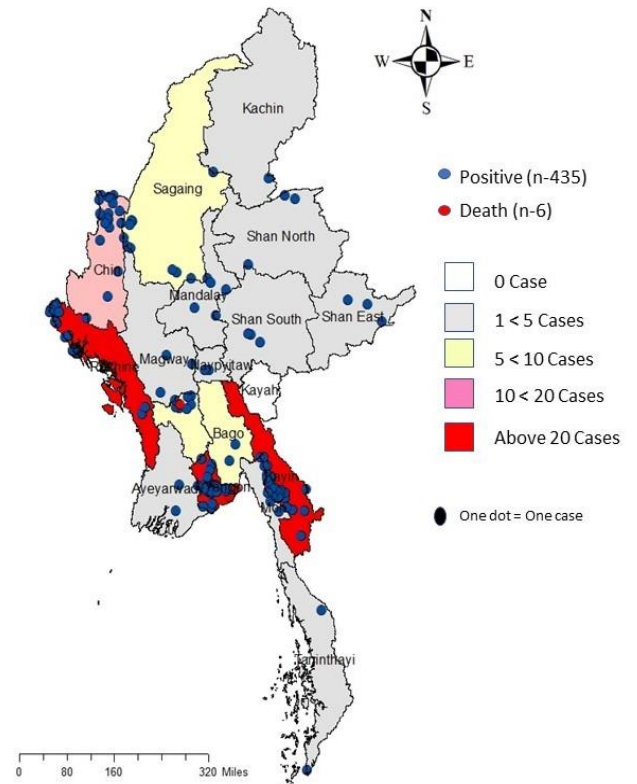
Death

**6**

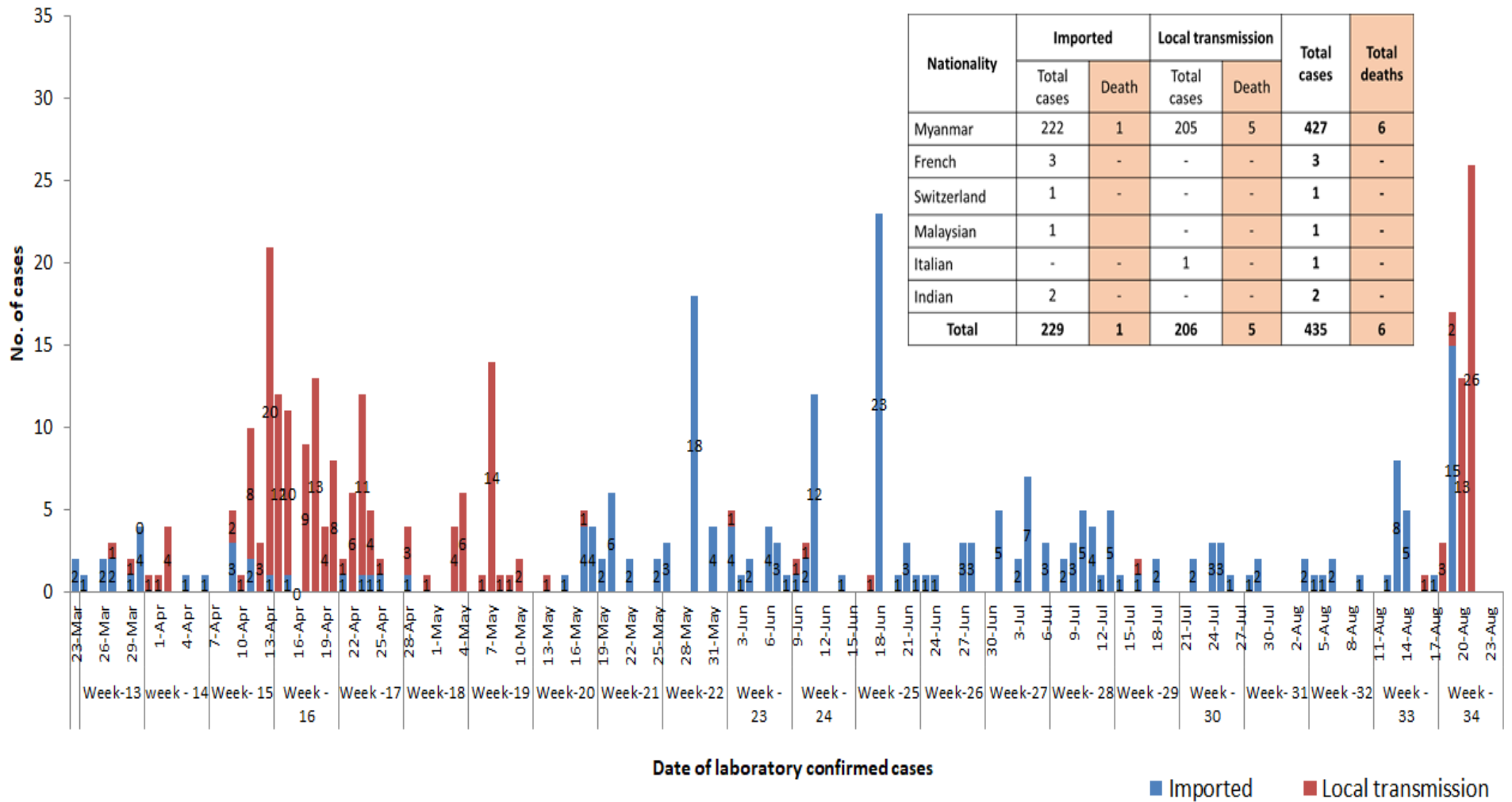
1.4% of Confirmed cases

No	State/Region	COVID –19 Confirmed case	Recovered	Deaths
1	Yangon	283	236(1 New)	5
2	Rakhine	61(26 New)	16	-
3	Kayin	29	29	-
4	Chin	17	3	-
5	Sagaing	9	9	-
6	Bago	9	8	1
7	Shan (South)	4	4	-
8	Mandalay	4	4	-
9	Shan (East)	3	3	-
10	Shan (North)	3	3	-
11	Magway	3	3	-
12	Naypyitaw	2	2	-
13	Ayeyarwaddy	2	2	-
14	Kachin	2	2	-
15	Mon	2	2	-
16	Thanintharyi	2	2	-
17	Kayah	-	-	-
<b>Total</b>		<b>435(26 New)</b>	<b>338(1 New)</b>	<b>6</b>

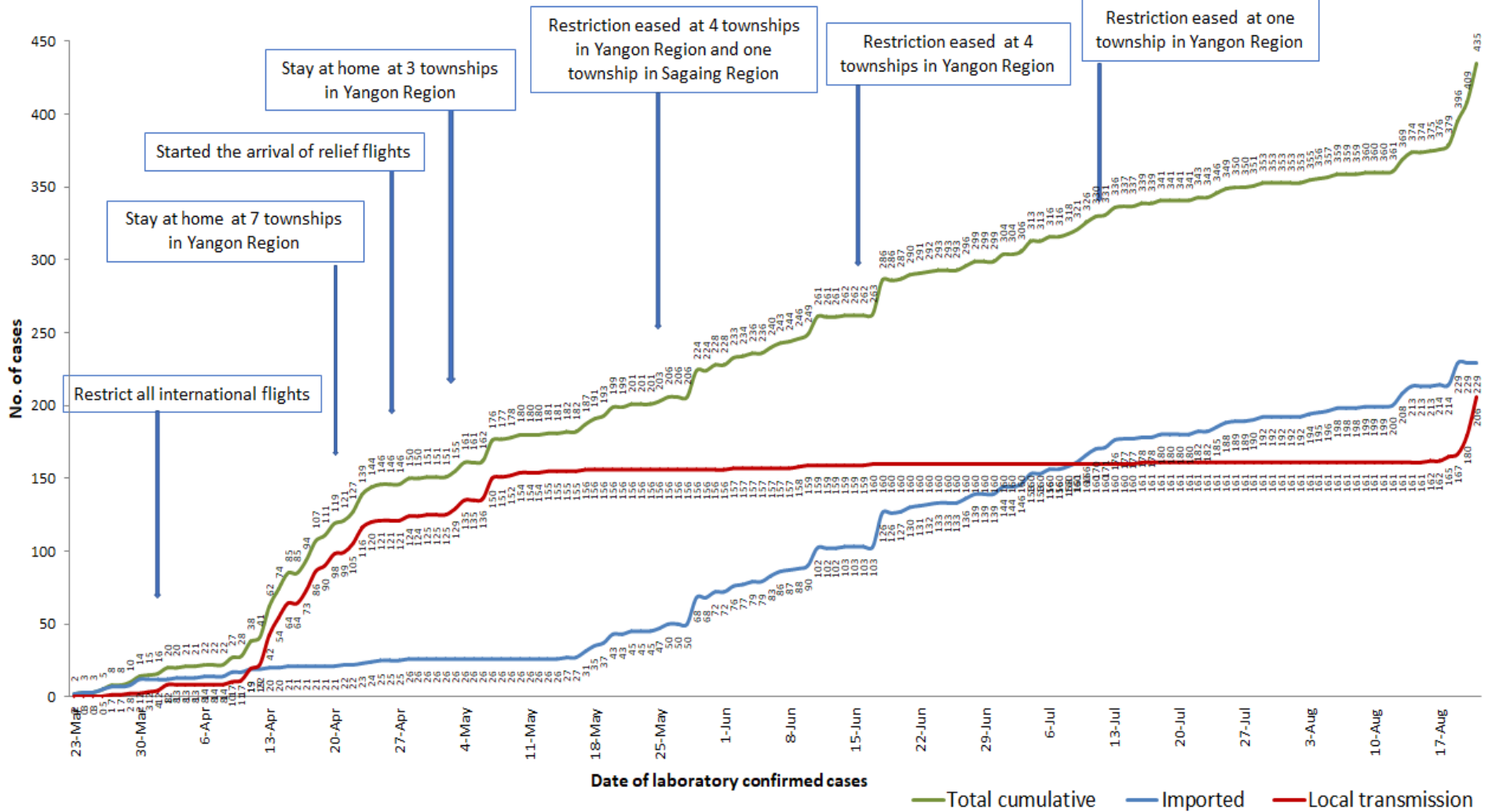
Map showing COVID-19 laboratory confirmed cases



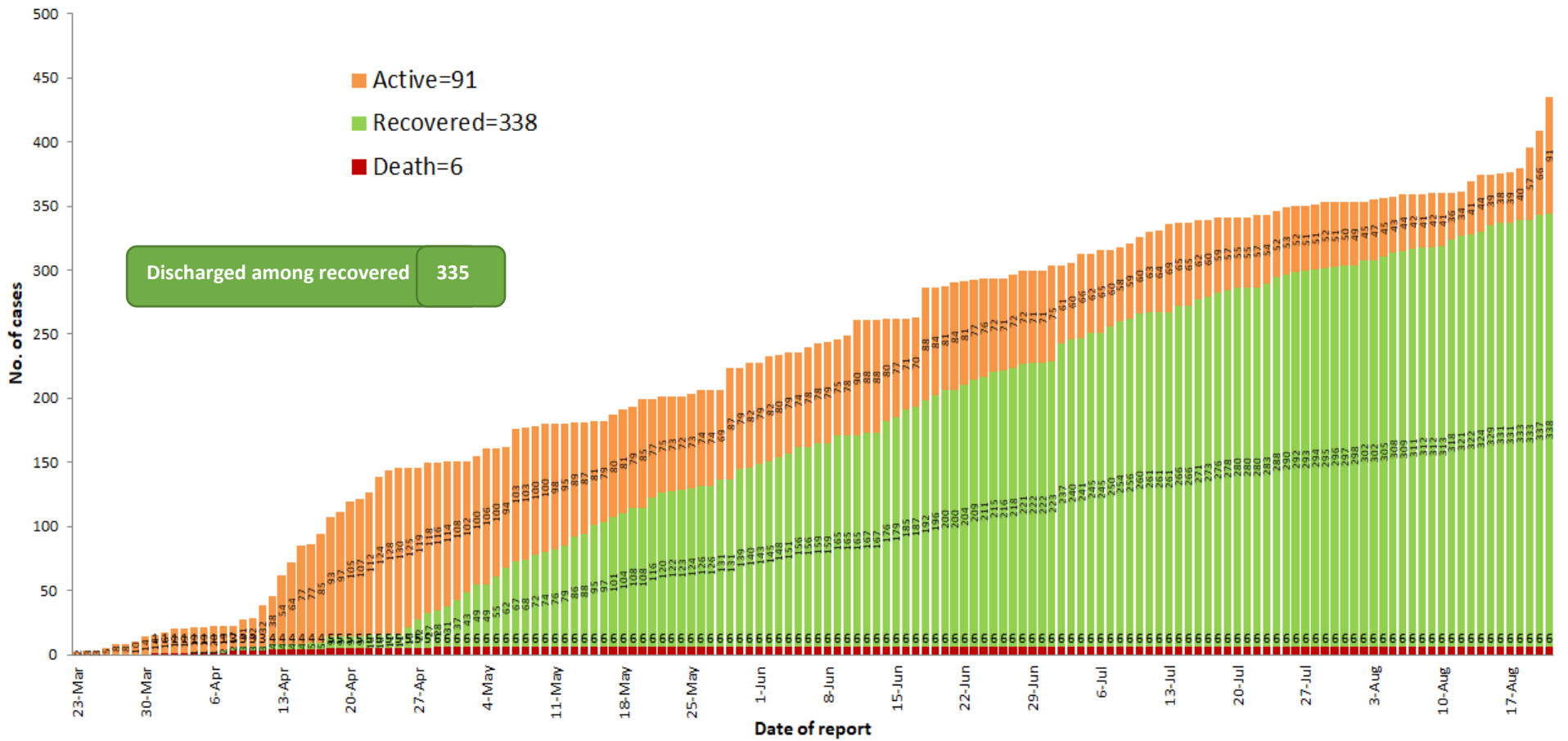
# COVID-19 confirmed cases by types of transmissions (as of 22.8.2020, 2:00 am) n=435



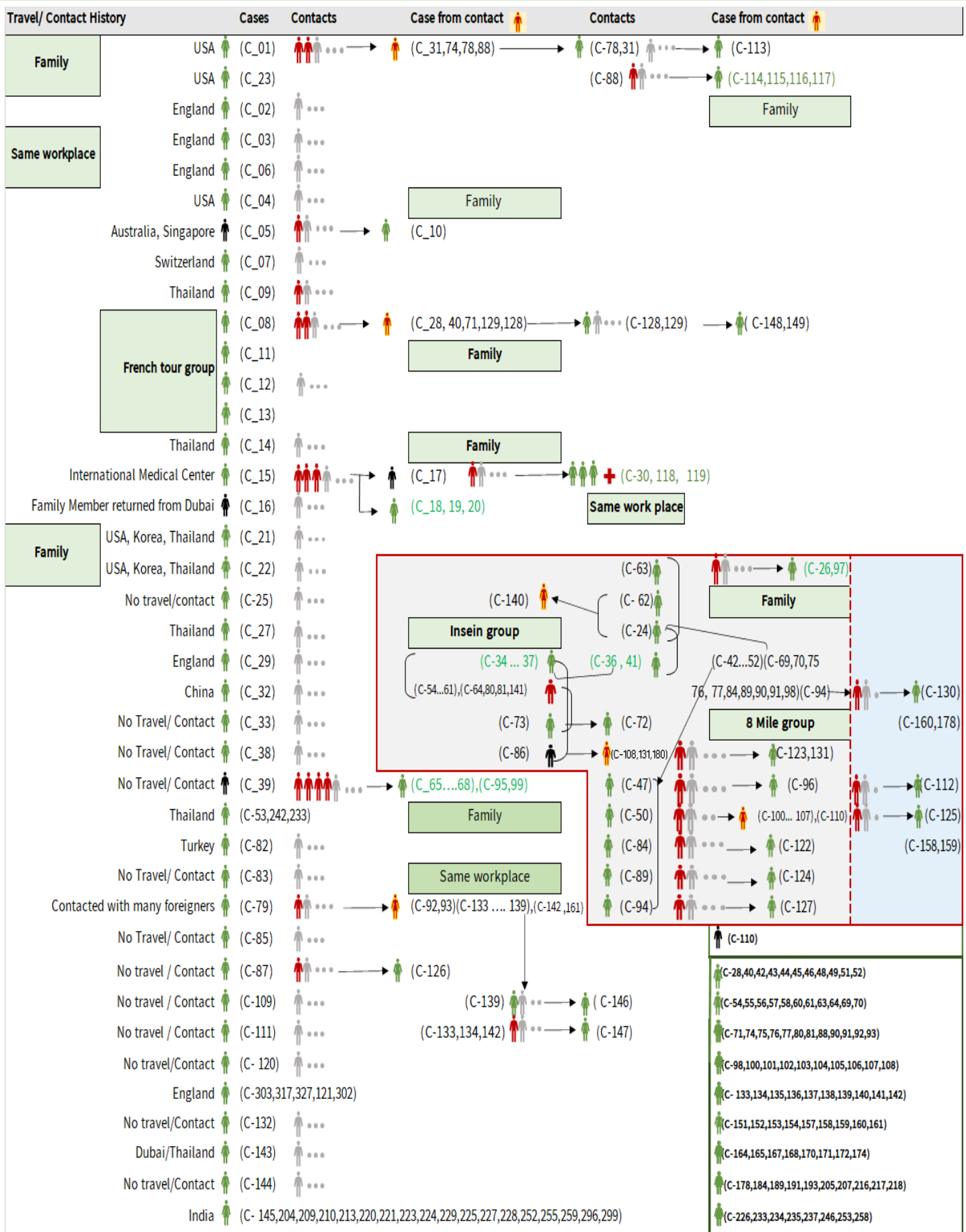
# Total laboratory confirmed cases by date (as of 22.8.2020, 2:00 am), n= 435



## Cumulative Number of active confirmed cases, recovered and deaths (23.3.2020 – 21.8.2020), n (cumulative)=435



# Summary of COVID-19 confirmed cases (as of 21.8.2020), n (contacts)= 5,939



# Summary of COVID-19 confirmed cases (as of 21.8.2020), n (contacts)= 5,939

Travel/ Contact History	Cases	Contacts	Case from contact	Contacts	Case from contact
China	(C-150,230)			Household	
Contact with religious event cluster	(C- 162)		(C-151,152,153,154,157)	(C-165 .... 177)	(C-166,169,173,175,176,177)
No travel/contact	(C-155)		(C-163,164)	(C-177)	(C-179)
No travel/contact	(C-156)				(C-181)
No travel/contact	(C- 183)				
Malaysia	(C-184,189,273,280)		(C-182,185,186,191,188,190,187,200,201,232,275,282,351,353)		
UAE	(C-301,364,365,366,367,368,369,371)		C-193,192,194,195,196,197,198,199,300,301,314,315,316,337,340)		
Italy	(C-243,202)				
No travel/Contact	(C- 231)				
Bangladesh	(C-234,244,247,250,262)		(C-244,245,247,248,250,262,291,292,293,308,309,310,325,326,334,348)		
No travel/contact	(C-245)				
No travel/contact	(C-249)				
No travel/contact	(C-263)				
Thailand	(C-333)		(C-264,265,266,267,268,269,270,271,272,273,274,276,277,278,279,280,281,283,284,285,286,287,294,304,312,332,335,336,338,346,349,352)		
Quata	(C-288,289,290,354,355)				
India	(C-205.....214,216...219,222.... 229,....239,246,253...258,295,297,298,307,322,323,324,345,357,358,359,361,372,373,374,380.....393)				
Lao	(C-311)				
Singapore	(C-376)		(C-313)		
Philippines	(C-319,394)		(C-320,321,342,343)		
USA	(C-347,370)		(C-331,350,360)		
No travel/contact	(C-339)				
Sudan	(C-356)				
India	(C-203,240,241,251,254,256,260,328,329,330,261,299,305,341,344)				
Japan	(C-362,363)				
No travel/Contact	(C-375)			1' contact	(C-395)
No travel/Contact	(C-377)		(C-410,428,429)		
No travel/Contact	(C-378)		(C-430)		
No travel/Contact	(C-396)		(C-422,423,424,425,426,427)		
No travel/Contact	(C-397)				
No travel/Contact	(C-399)				
No travel/Contact	(C-411)				
No travel/Contact	(C-412)				
No travel/Contact	(C-413)				
No travel/Contact	(C-414)				
No travel/Contact	(C-416)				
				2' contact	(C-398,417) work place cluster
					(C-415)
					(C-418,419) family
					(C-420,421,431)
				2' contact	(C-378,405,408,409)
					(C-379) family cluster
					(C-400,401,402,403,404)
					(C-406,407) family cluster

## Summary of current situation

Type	New (20.8.2020-21.8.2020)	Total (on 21.8.2020)
<b>Suspected and Person Under Investigation (PUI)</b>	<b>45</b>	<b>151</b>
<b>Hospital Quarantine</b>	<b>13</b>	<b>46</b>
<b>Facility Quarantine</b>	<b>952</b>	<b>19,564</b>

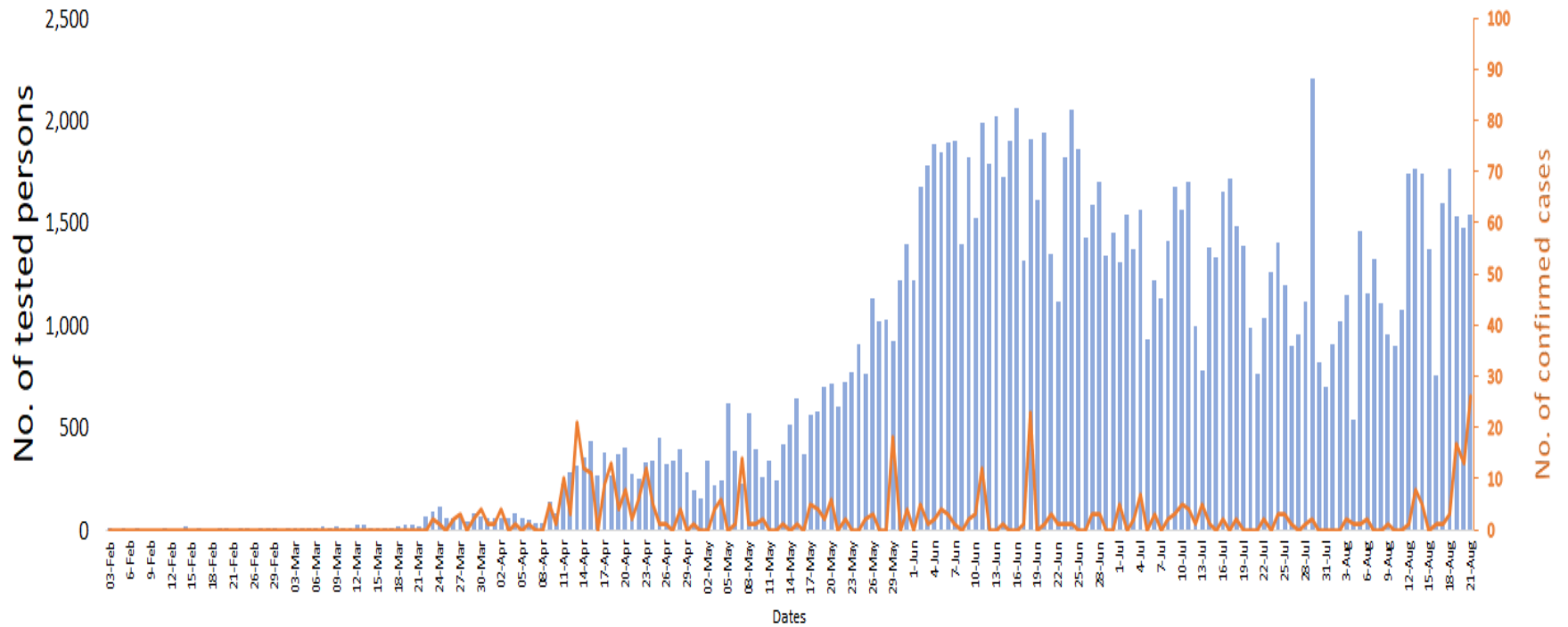
### Person under Investigation (PUI) by State/Region hospitals (31.1.2020 – 21.8.2020) n= 7,212

No.	State/Region	PUI
1	Yangon	3589
2	Mandalay	1496
3	Kayin	354
4	Mon	291
5	Shan (N)	258
6	Magway	229
7	Bago	181
8	Shan (E)	130
9	Shan (S)	106
10	Ayeyarwaddy	104
11	Sagaing	91
12	Kayah	81
13	Thanintharyi	81
14	Rakhine	83
15	Naypyitaw	65
16	Kachin	43
17	Chin	30
<b>Total</b>		7,212

### No. of Facility Quarantine sites and Quarantined people on 21.8.2020

No.	State/Region	No. of facilities	Total no. of quarantine
1	Yangon	68	4343
2	Mon	269	2745
3	Bago	186	2391
4	Kayin	423	2224
5	Tanintharyi	189	1763
6	Magway	407	1216
7	Mandalay	69	1025
8	Sagaing	168	917
9	Rakhine	231	776
10	Ayeyarwaddy	75	503
11	Kachin	91	479
12	Shan South	80	468
13	Naypyitaw	3	303
14	Shan North	255	213
15	Kayah	18	92
16	Chin	20	59
17	Shan East	7	47
<b>Total</b>		2,559	19,564

## COVID-19 confirmed cases among tested by date (as of 21.8.2020)



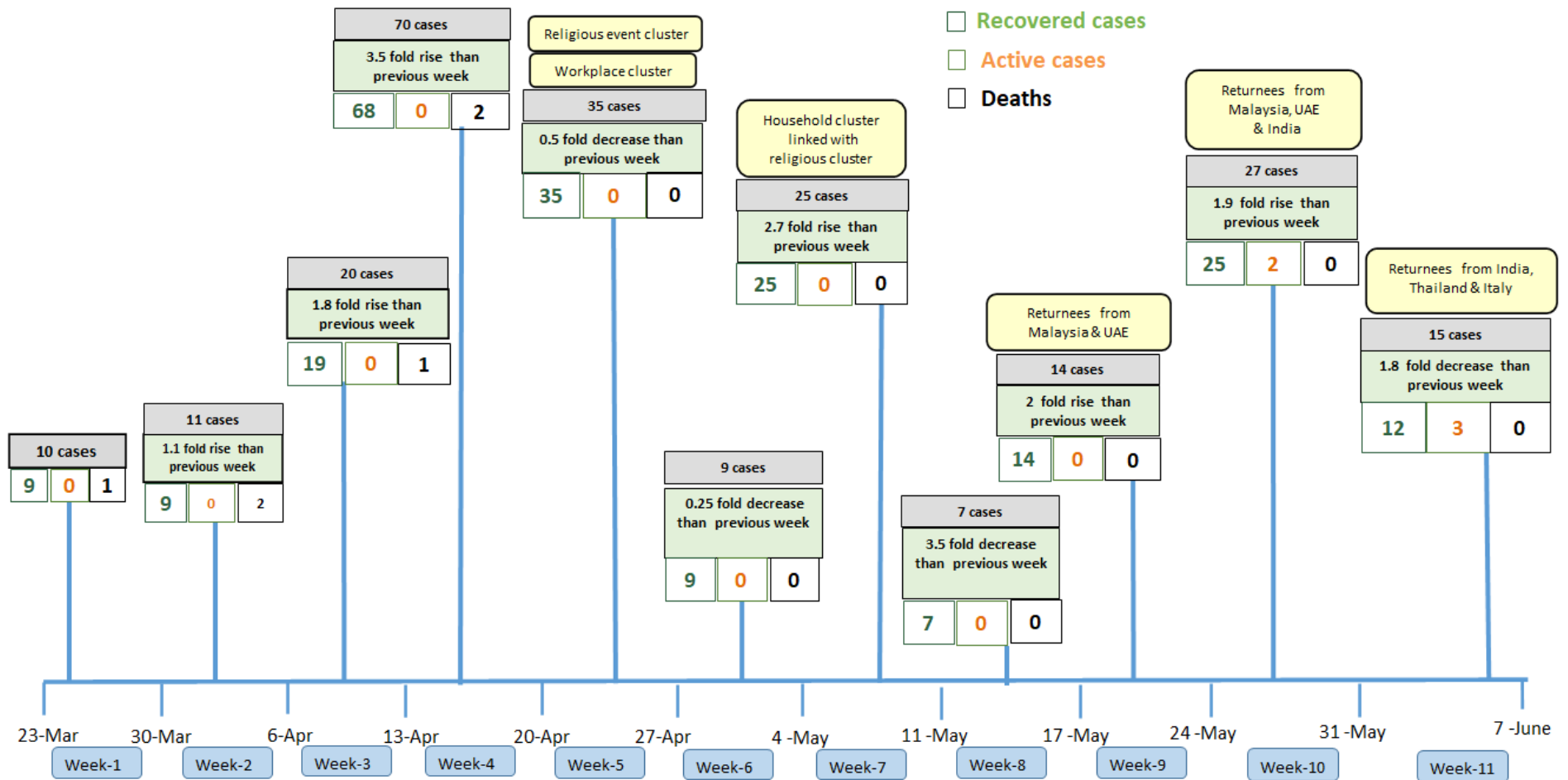
Total tested persons - 144,054

Total confirmed cases - 435

■ Tested person    — Confirmed case

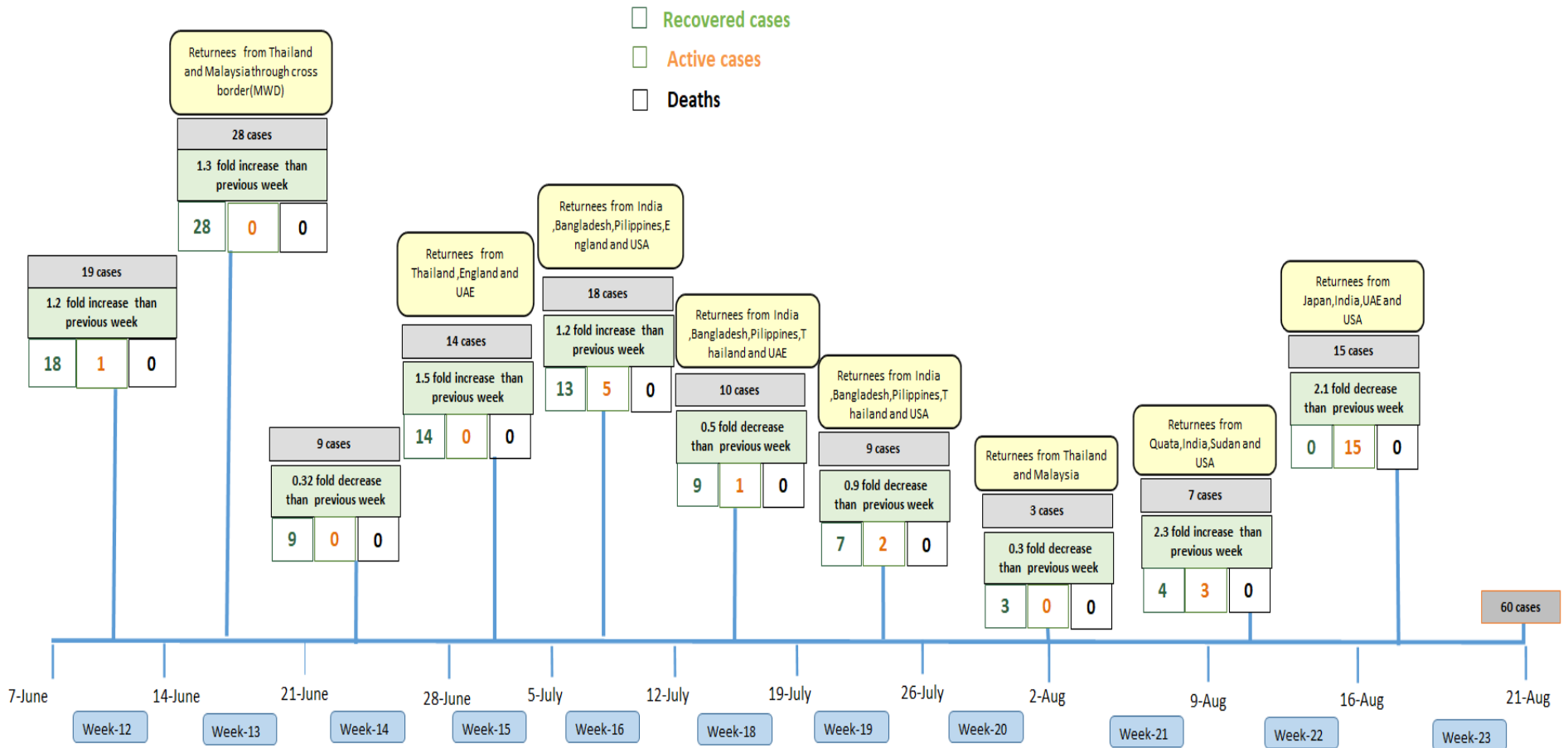


# Summary of new confirmed cases detection after first two cases (as of 21.8.2020)



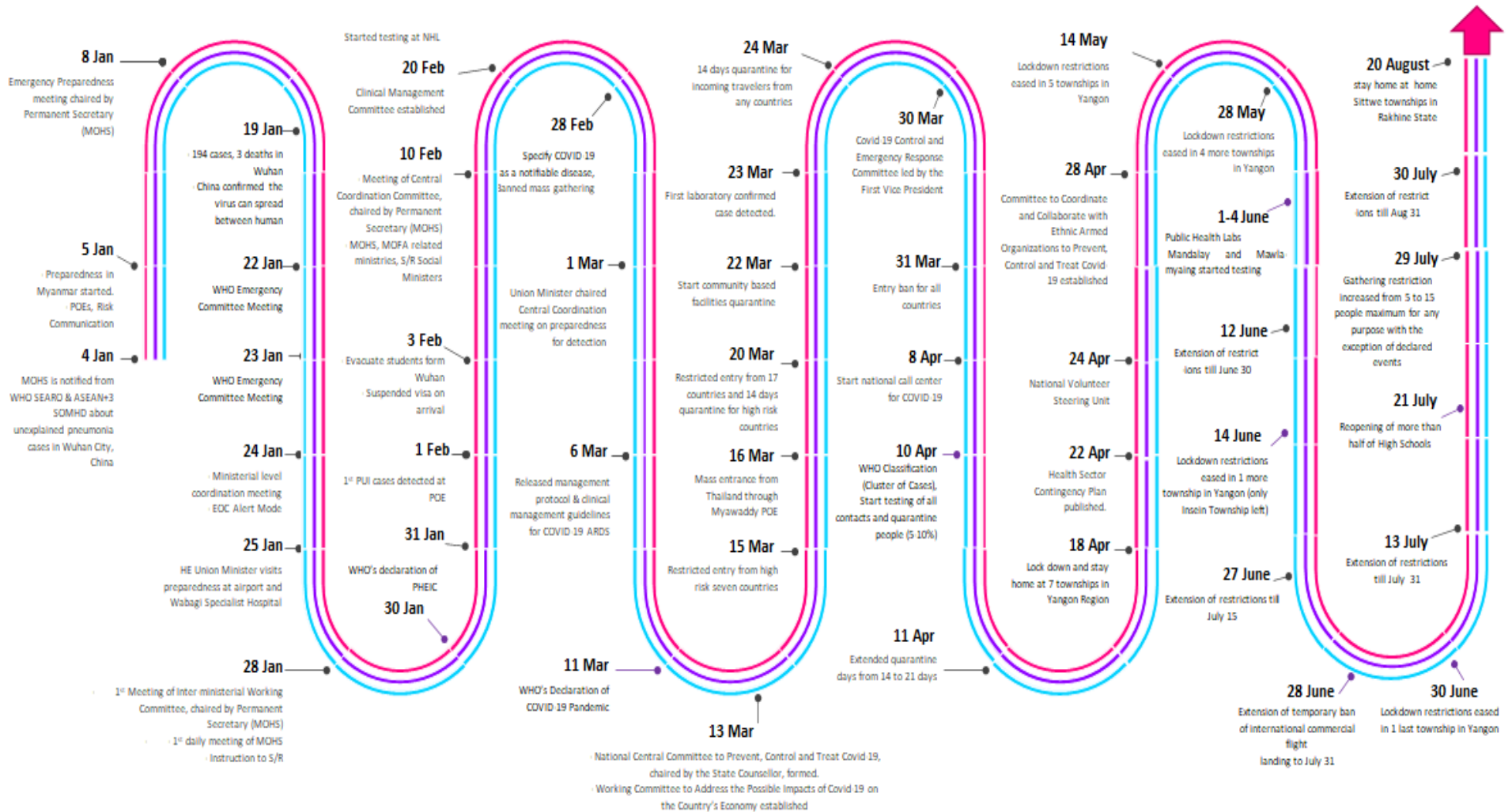
- Confirmed cases were detected as a peak in the 4th week after first confirmed cases due to the religious event cluster.
- Confirmed cases were decreased but still raised than the first 3 weeks due to the religious event cluster and workplace cluster.
- There were an increased in numbers of cases in the 7th week after the first two cases due to the household cluster linked with a religious cluster.
- Confirmed cases were detected by a nearly two-fold rise in the 9th and 10th weeks after the first two cases because of returnees coming back by relief flights.

# Summary of new confirmed cases detection after first two cases (as of 21.8.2020)



- Confirmed cases were detected as a peak in the 4th week after first confirmed cases due to the religious event cluster.
- Confirmed cases were decreased but still raised than the first 3 weeks due to the religious event cluster and workplace cluster.
- There were an increased in numbers of cases in the 7th week after the first two cases due to the household cluster linked with a religious cluster.
- Confirmed cases were detected by a nearly two-fold rise in the 9th and 10th weeks after the first two cases because of returnees coming back by relief flights.

# Timeline of Preparedness and Response to COVID-19 in Myanmar (as of 21.8.2020)



Hotline Number — 0673 420 268

Data source - CEU, DMS, NHL, PHL (MDY and MLM), DMR, DSGH, State and Region Health Departments