



Ministry of Health and Sports (Myanmar)

Department of Public Health

Central Epidemiology Unit

(28 June 2020)

Coronavirus Disease 2019 (COVID-19)

Situation Report - 82

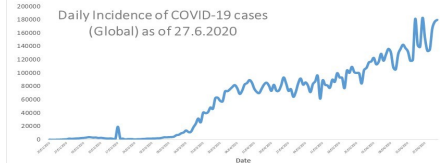
Data as reported by States and Regions by 4:00 AM MST 28 June 2020

Global Situation
(WHO situation report - 159)
data as of 14:30 MST 27 June 2020

Confirmed cases
9,653,048

Deaths
491,128

Case Fatality Rate
5.0 %



Myanmar Situation

Total tested
73,278

Confirmed cases
296

Negative
72,982

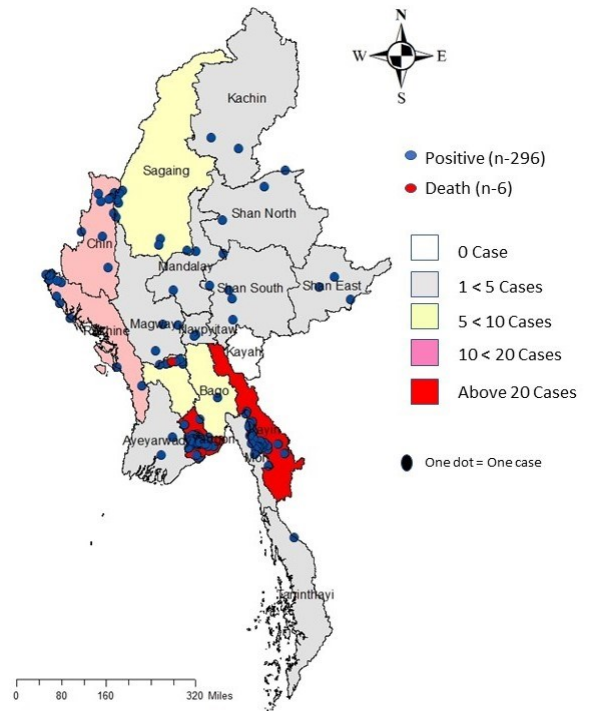
Recovered
218
73.6 % of confirmed cases

Active
72
24.3% of confirmed cases

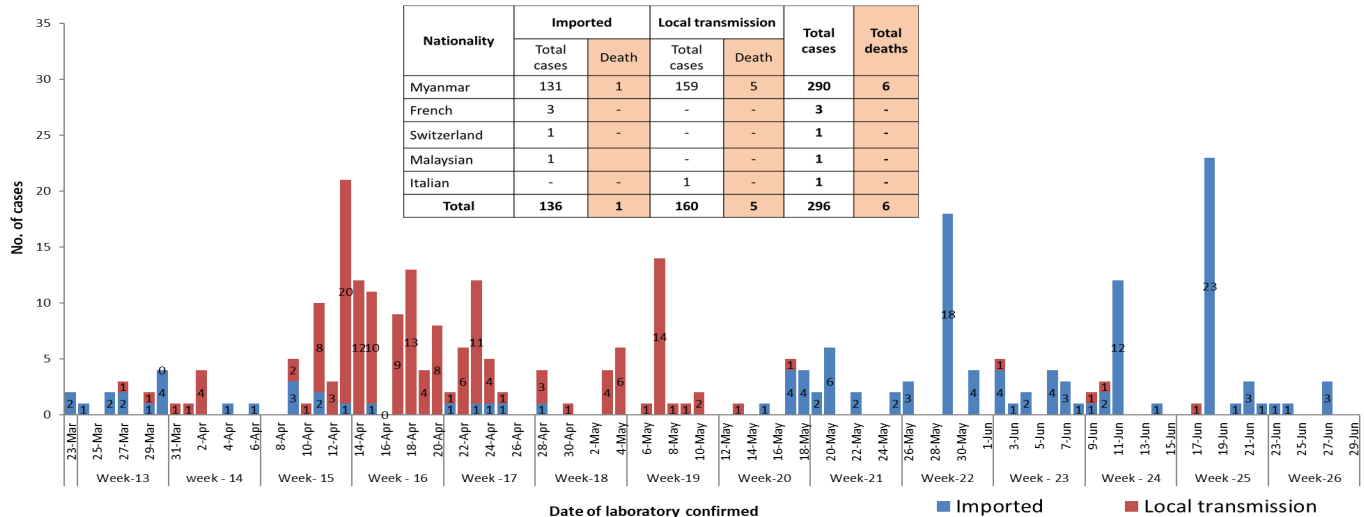
Death
6
2.0% of confirmed cases

No.	State/Region	COVID-19 Confirmed	Recovered	Deaths
1	Yangon	206(2 New)	167	5
2	Kayin	26(1 New)	2	-
3	Rakhine	12	4(1 New)	-
4	Chin	10	6	-
5	Sagaing	9	8	-
6	Bago	8	7	1
7	Shan(South)	4	4(1 New)	-
8	Mandalay	3	3	-
9	Shan(East)	3	4	-
10	Shan(North)	3	2	-
11	Magway	3	3	-
12	Naypyitaw	2	2	-
13	Ayeyarwaddy	2	2	-
14	Kachin	2	1	-
15	Mon	2	1	-
16	Thanintharyi	1	1	-
17	Kayah	-	-	-
Total		296(3 New)	218 (2 New)	6

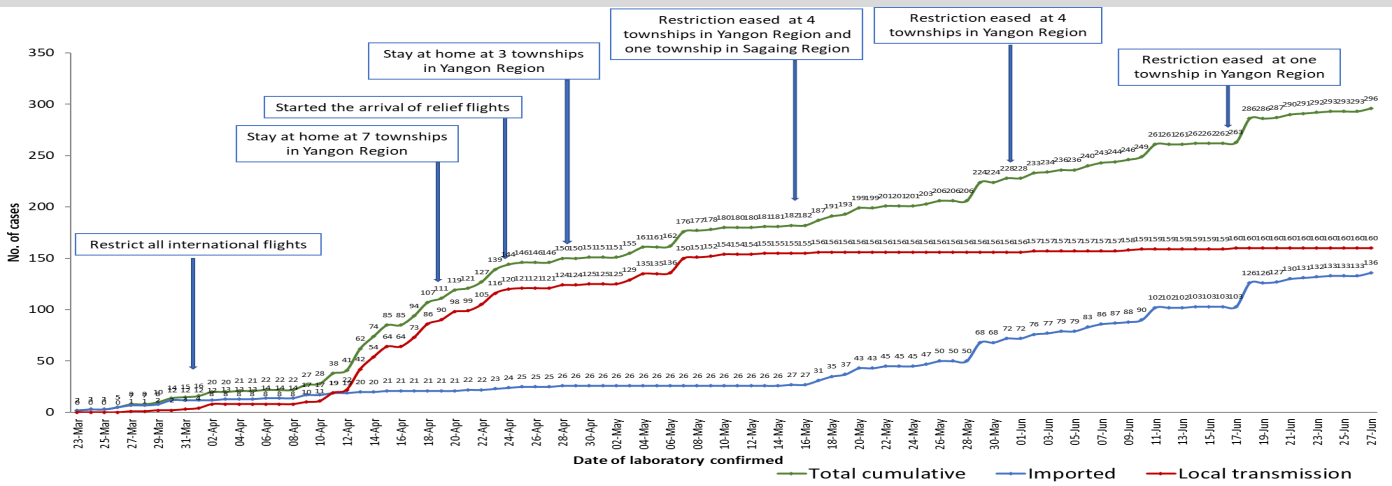
Map showing COVID-19 laboratory confirmed cases



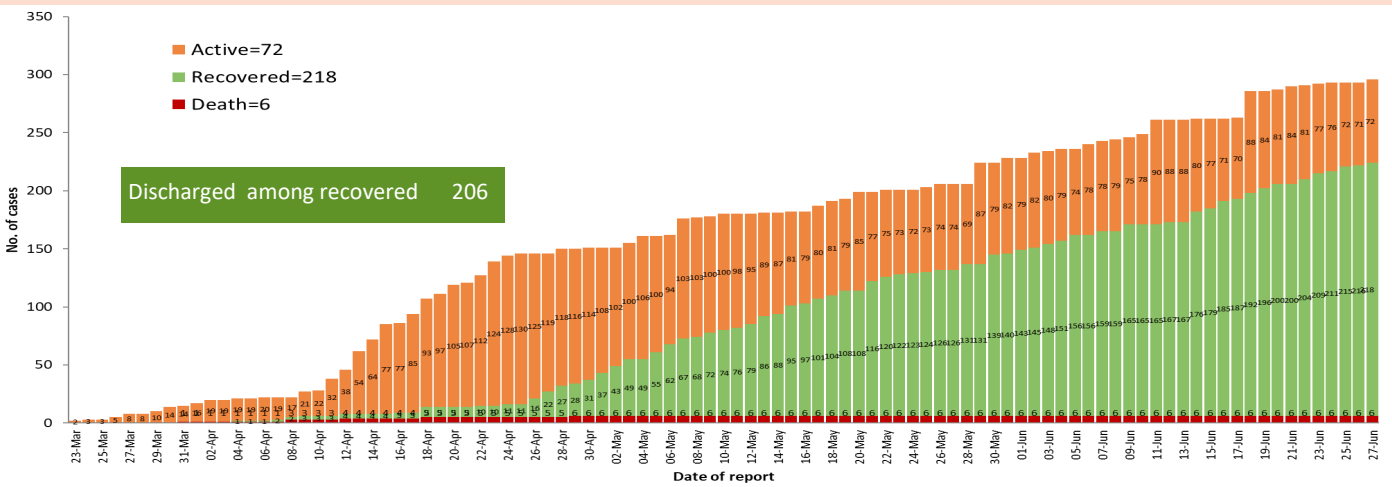
COVID-19 confirmed cases by types of transmissions (as of 28.6.2020, 4:00 am) n=296



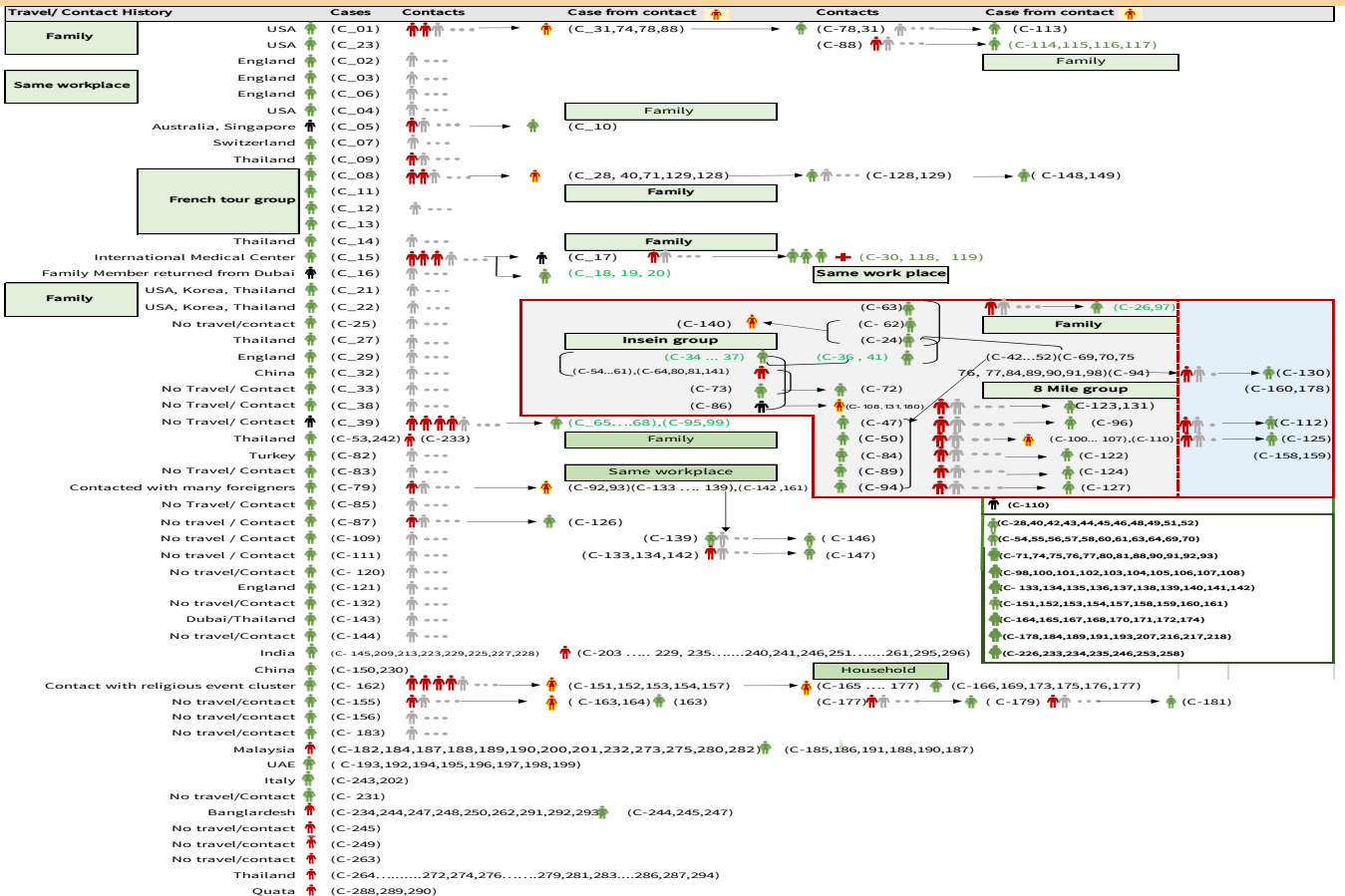
Total laboratory confirmed cases by date (as of 28.6.2020, 4:00 am), n = 296



Cumulative Number of active confirmed cases, recovered and deaths (23.3.2020 – 27.6.2020), n (cumulative)=296



Summary of COVID-19 confirmed cases (as of 27.6.2020), n (contacts)=5,575



Summary of current situation

Type	New (26.6.2020-27.6.2020)	Total (on 27.6.2020)
Suspected and Person Under Investigation (PUI)	27	181
Hospital Quarantine	3	53
Facility Quarantine	829	29,431

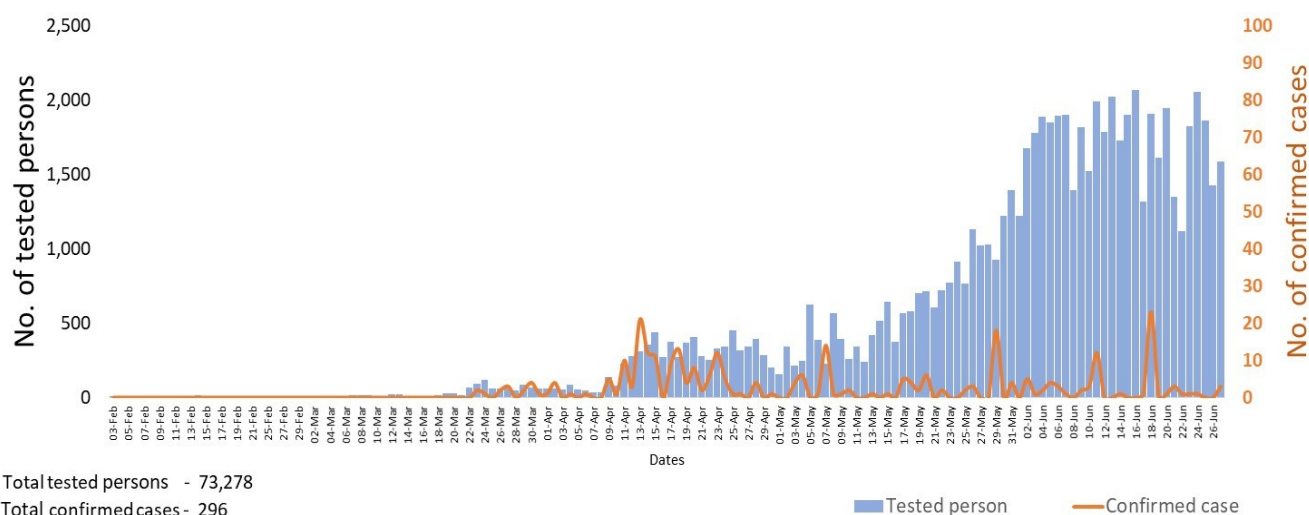
Person under Investigation (PUI) by State/Region hospitals (31.1.2020 – 27.6.2020) n= 5,909

No. of Facility Quarantine sites and Quarantined people on 27.6.2020

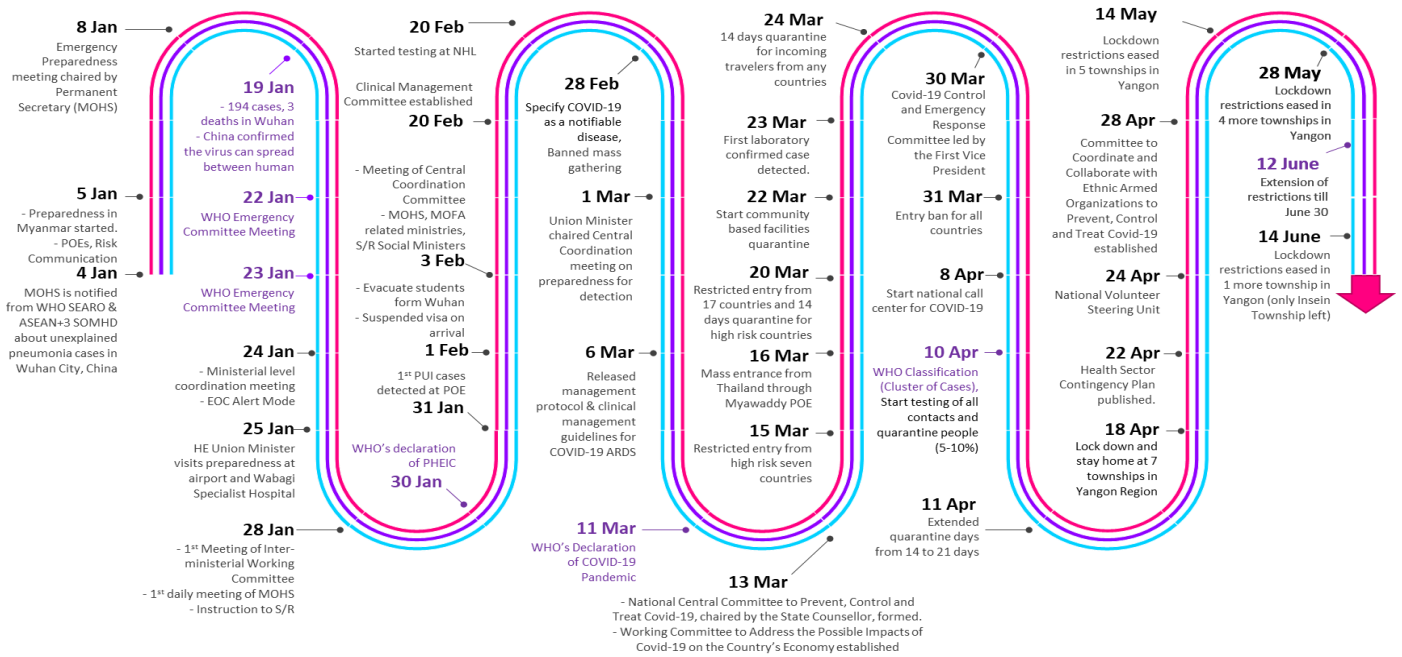
No.	State/Region	PUI
1.	Yangon	3,023
2.	Mandalay	1,132
3.	Kayin	232
4.	Mon	220
5.	Shan(N)	201
6.	Magway	198
7.	Bago	180
8.	Shan(E)	115
9.	Ayeyarwaddy	102
10.	Shan(S)	96
11.	Sagaing	85
12.	Kayah	76
13.	Rakhine	67
14.	Naypyitaw	63
15.	Thanintharyi	58
16.	Kachin	34
17.	Chin	23
Total		5,909

No.	State/Region	No. of facilities	Total no. of quarantine
1.	Bago	342	3,789
2.	Yangon	80	3,717
3.	Magway	2,625	3,612
4.	Kayin	771	3,271
5.	Mon	281	2,836
6.	Kachin	412	2,351
7.	Mandalay	133	1,826
8.	Sagaing	969	1,607
9.	Rakhine	396	1,557
10.	Shan South	129	1,337
11.	Tanintharyi	189	1,215
12.	Ayeyarwaddy	198	869
13.	Naypyitaw	19	626
14.	Shan North	239	340
15.	Chin	27	226
16.	Kayah	18	136
17.	Shan East	11	116
Total		6,839	29,431

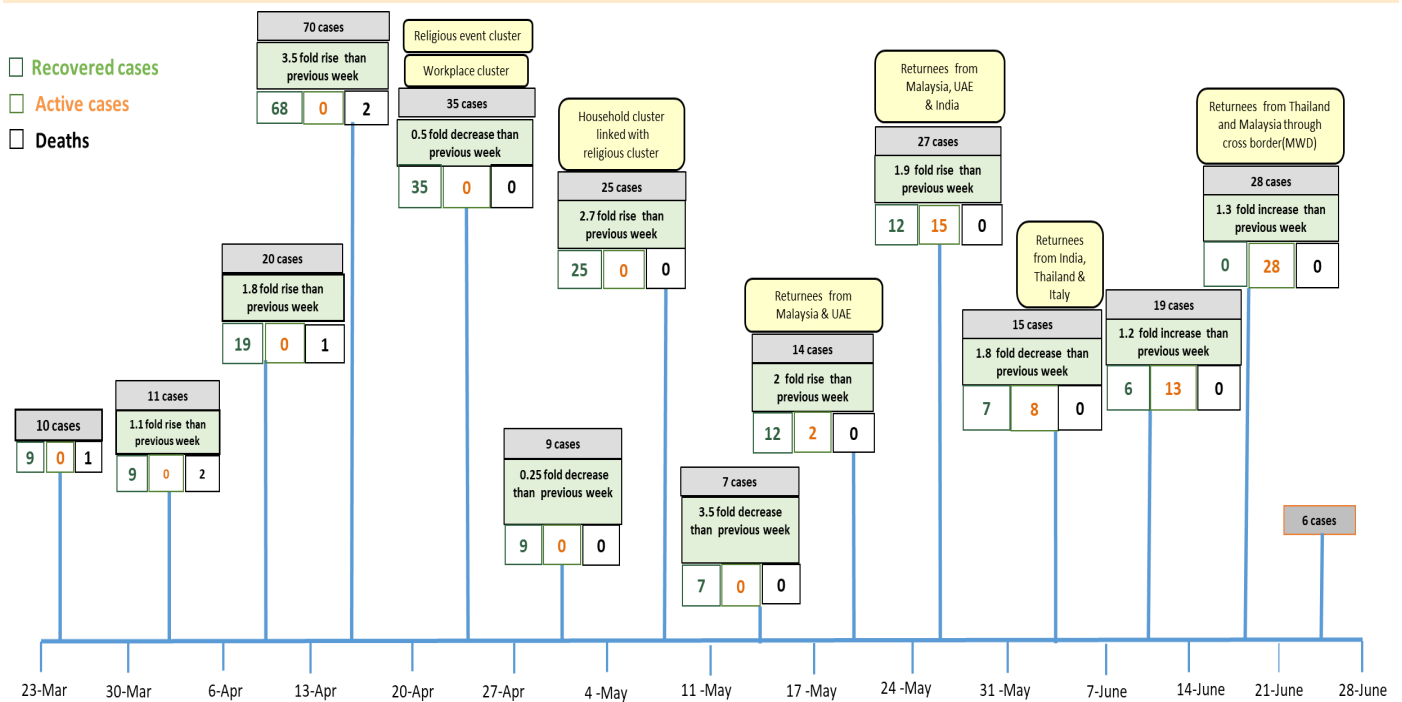
COVID-19 confirmed cases among tested by date (as of 27.6.2020)



Timeline of Preparedness and Response to COVID-19 in Myanmar (as of 27.6.2020)



Summary of new confirmed cases detection after first two cases (as of 27.6.2020)



- Confirmed cases were detected as a peak in the 4th week after first confirmed cases due to the religious event cluster.
- Confirmed cases were decreased but still raised than the first 3 weeks due to the religious event cluster and workplace cluster.
- There were an increased in numbers of cases in the 7th week after the first two cases due to the household cluster linked with a religious cluster.
- Confirmed cases were detected by a nearly two-fold rise in the 9th and 10th weeks after the first two cases because of returnees coming back by relief flights.