



Ministry of Health and Sports (Myanmar)

Department of Public Health

Central Epidemiology Unit

(30 May 2020)

Coronavirus Disease 2019 (COVID-19)

Situation Report - 53

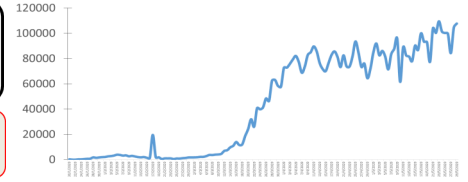
Data as reported by States and Regions by 00:30 AM MST 30 May 2020

Global Situation
(WHO situation report - 130)
data as of 14:30 MST 29 May 2020

Confirmed cases
5,701,337

Deaths
357,688

Case Fatality Rate
6.2 %



Myanmar Situation

Total tested
24,413

Confirmed cases
224

Negative
24,189

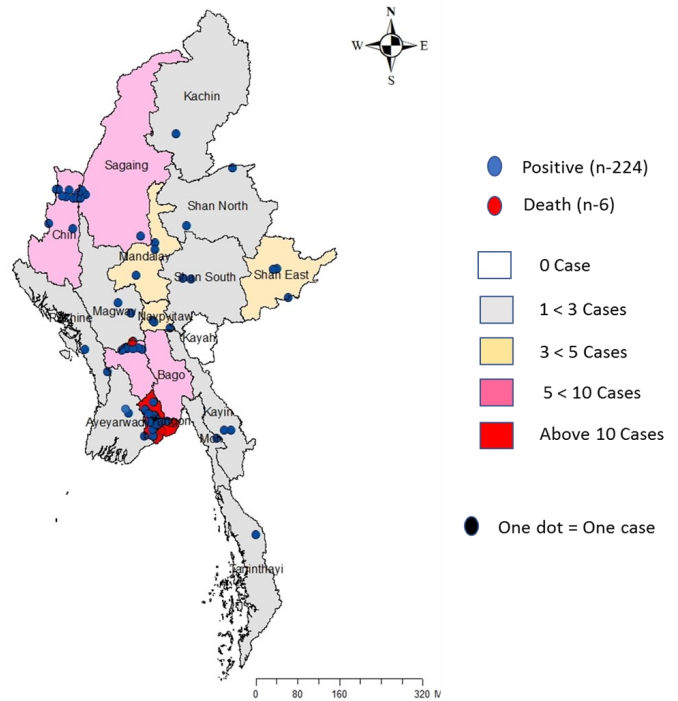
Recovered
130
58 % of confirmed cases

Active
88
39.2% of confirmed cases

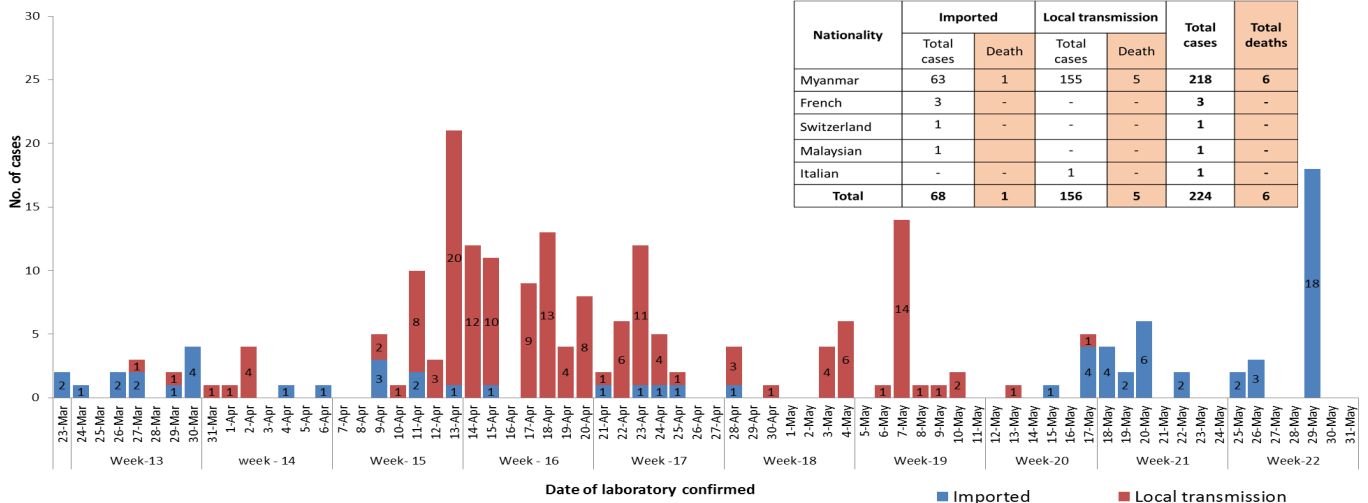
Death
6
2.6% of confirmed cases

No.	State/Region	COVID-19 Confirmed case	Recovered	Deaths
1.	Yangon	178 (17 new)	100	5
2.	Chin	9	3	-
3.	Bago	7	6	1
4.	Sagaing	7	7	-
5.	Shan(East)	3	2	-
6.	Mandalay	3	3	-
7.	Shan(South)	2	2	-
8.	Shan(North)	2	2	-
9.	Naypyitaw	2	2	-
10.	Kayin	2	-	-
11.	Magway	2	1	-
12.	Rakhine	2	-	-
13.	Ayeyarwaddy	2 (1 new)	-	-
14.	Mon	1	1	-
15.	Kachin	1	1	-
16.	Thanintharyi	1	-	-
17.	Kayah	-	-	-
Total		224 (18 new)	130	6

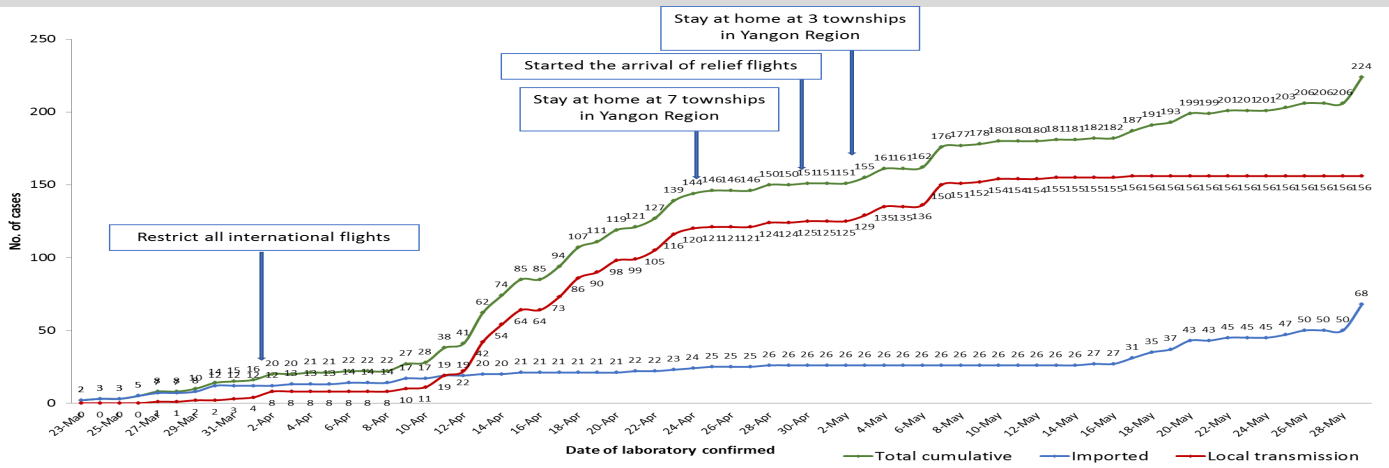
Map showing COVID-19 laboratory confirmed cases



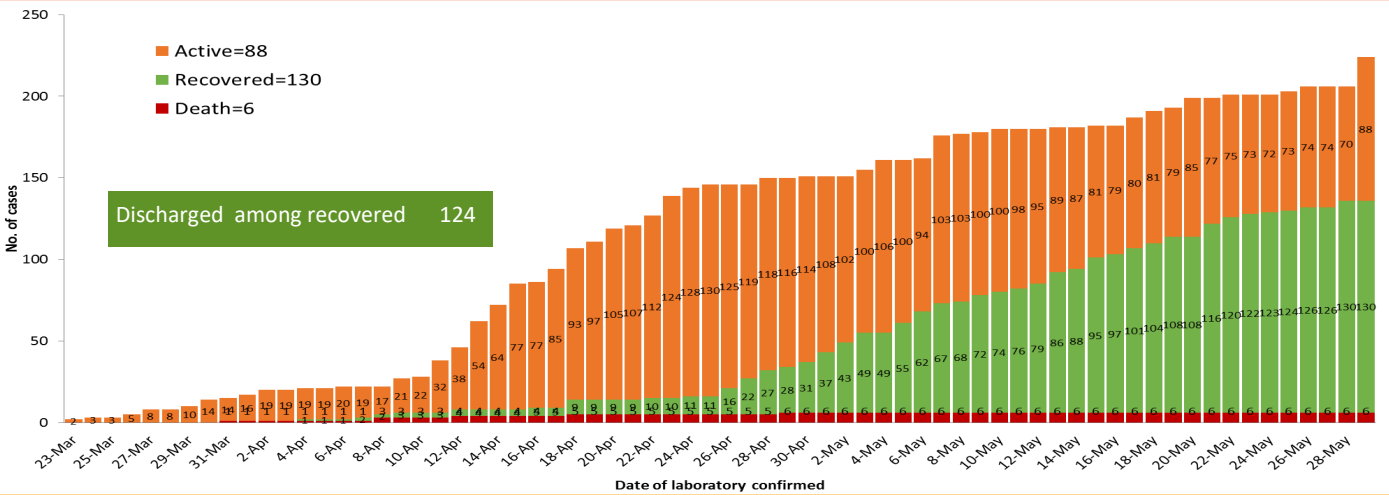
COVID-19 confirmed cases by types of transmissions (as of 30-5-2020,00:30 am) n=224



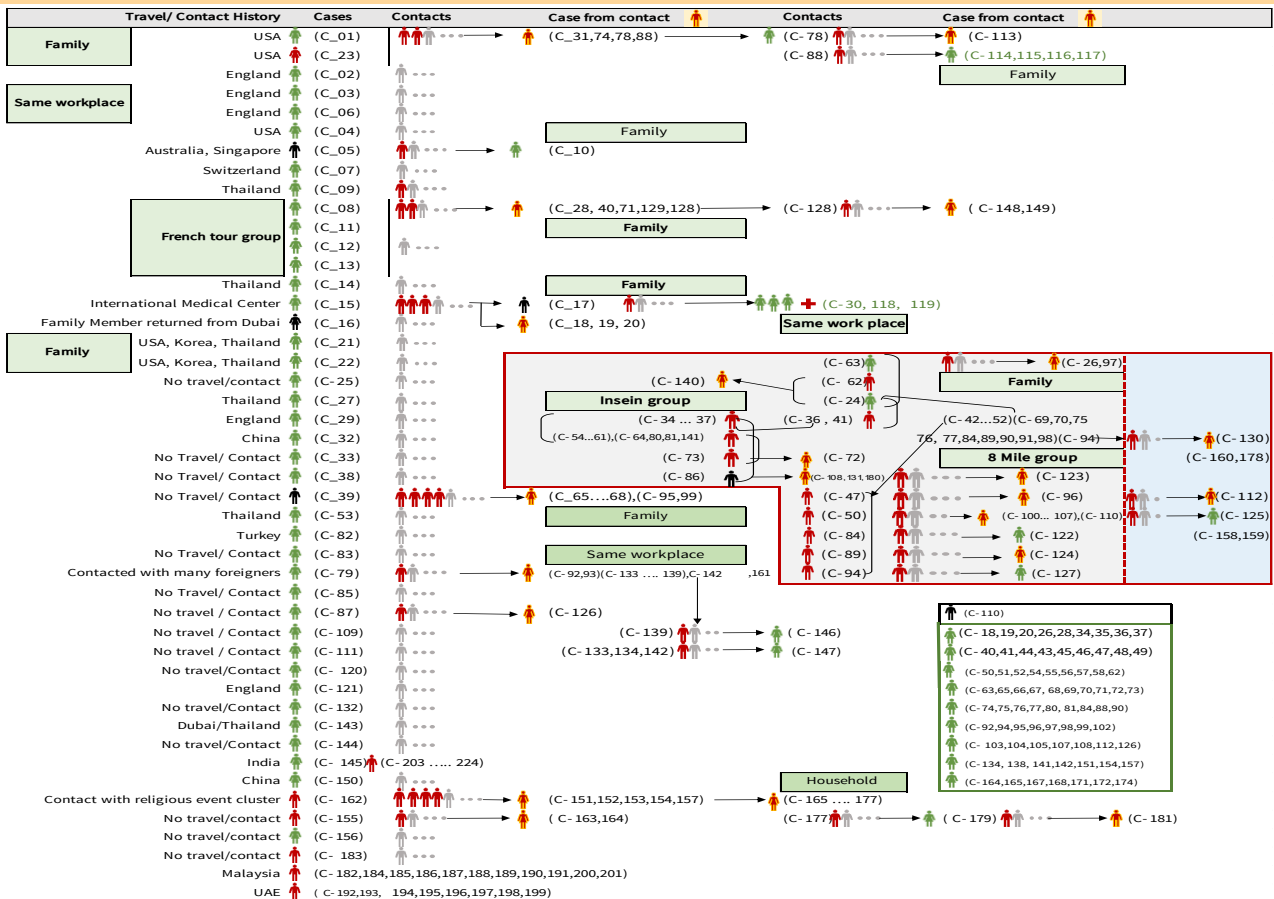
Total laboratory confirmed cases by date (as of 30.5.2020, 00:30 am), n= 224



Cumulative Number of active confirmed cases, recovered and death (23.3.2020-30.5.2020), n=224



Summary of COVID-19 confirmed cases (as of 30-5-2020), n (contacts)= 4,767



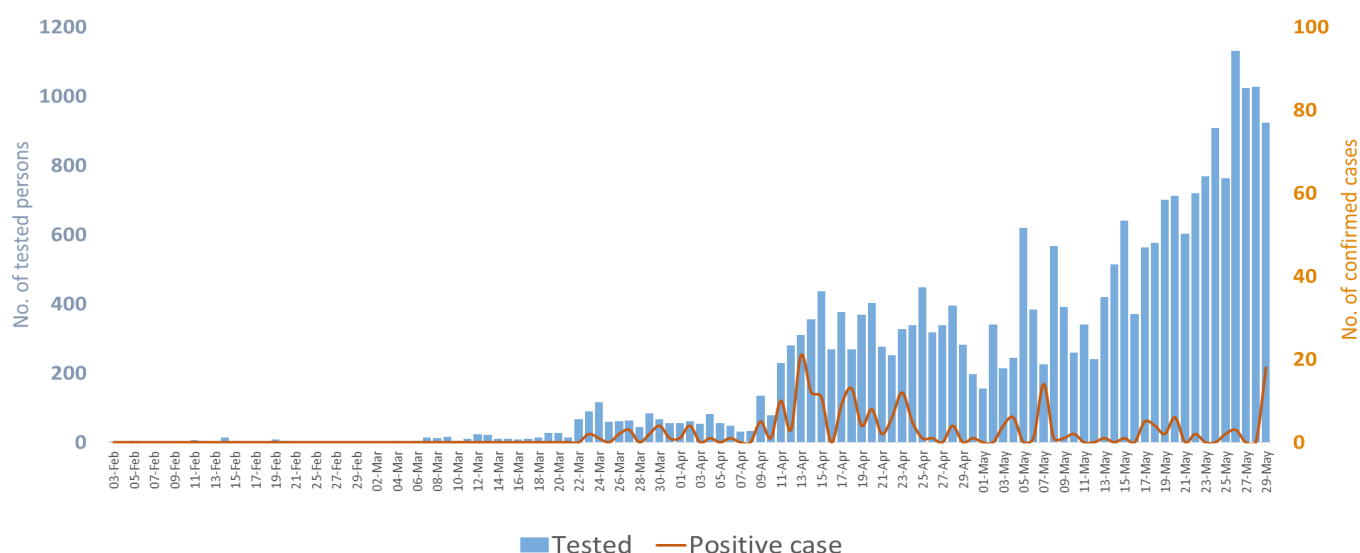
Summary of current situation

Type	New (28.5.2020-29.5.2020)	Total (on 29.5.2020)
Suspected and Person Under Investigation (PUI)	25	296
Hospital Quarantine	2	92
Facility Quarantine	2,345	51,865

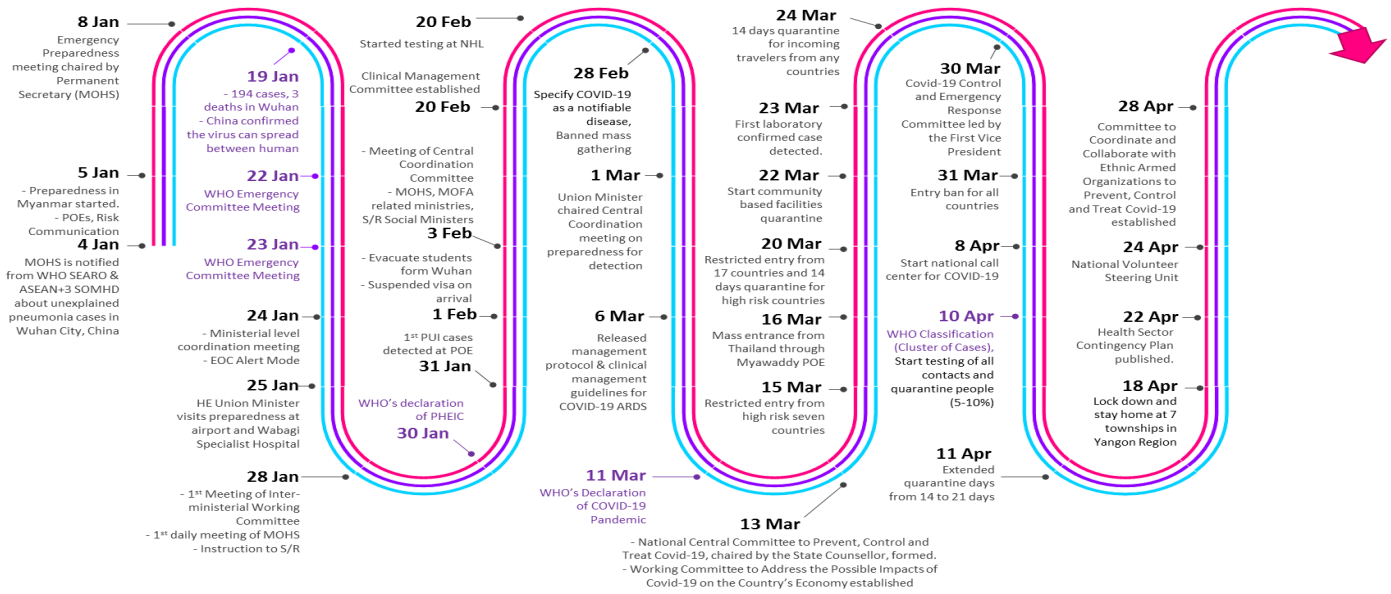
Person under Investigation (PUI) by State/Region	No. of Facility Quarantine sites and Quarantined people on 29.5.2020
---	---

No.	State/Region	PUI	No.	State/Region	No. of facilities	Total no. of quarantine people
1.	Yangon	2,556	1.	Magway	2,863	11,676
2.	Mandalay	875	2.	Sagaing	1,859	5,926
3.	Bago	185	3.	Kachin	664	5,679
4.	Shan (N)	170	4.	Mandalay	767	4,247
5.	Tanintharyi	167	5.	Bago	484	4,191
6.	Kayin	166	6.	Rakhine	801	4,110
7.	Shan (S)	163	7.	Ayeyarwaddy	1,160	3,957
8.	Mon	97	8.	Yangon	56	2,688
9.	Rakhine	96	9.	Shan (N)	431	2,376
10.	Shan (E)	84	10.	Kayin	187	1,784
11.	Ayeyarwaddy	74	11.	Tanintharyi	189	1,233
12.	Magway	70	12.	Shan(S)	114	1,106
13.	Sagaing	60	13.	Naypyitaw	19	1,066
14.	Kayah	54	14.	Mon	25	922
15.	Chin	50	15.	Shan (E)	11	413
16.	Naypyitaw	27	16.	Chin	46	304
17.	Kachin	20	17.	Kayah	18	187
Total		4,914	Total		9,694	51,865

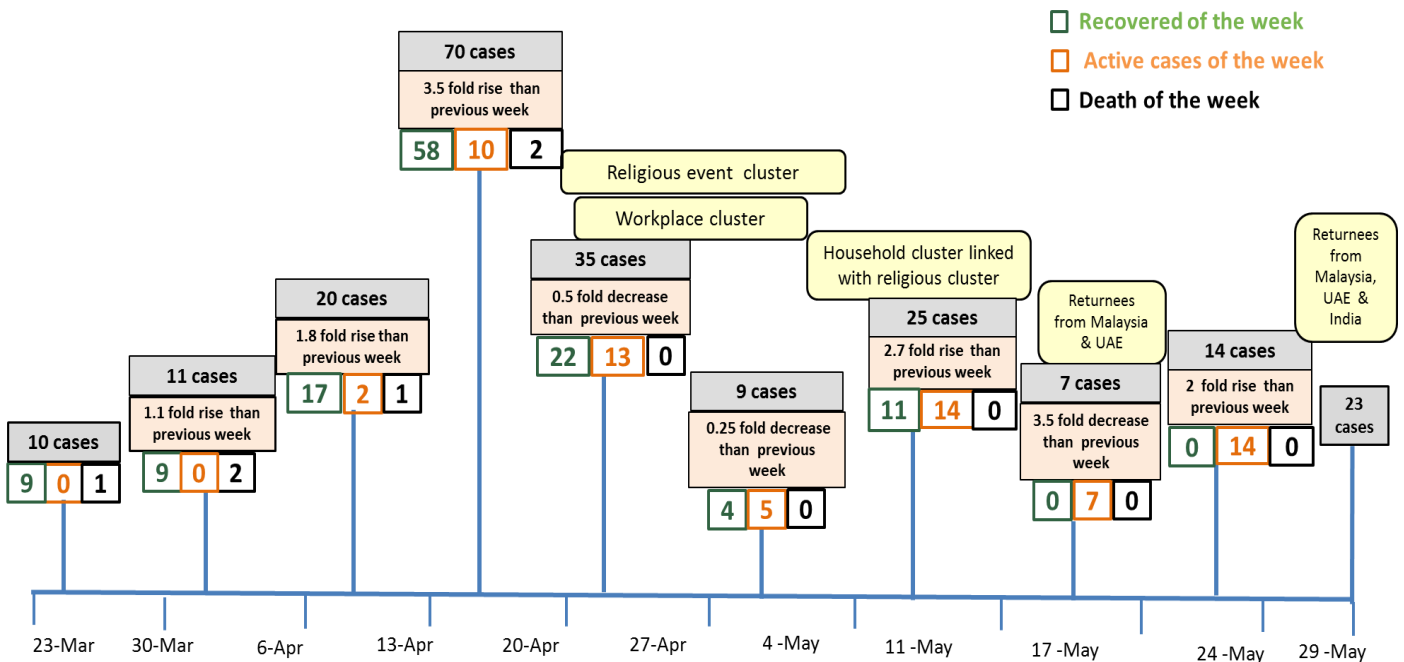
COVID-19 confirmed cases among tested by date (as of 29.5.2020)



Timeline of Preparedness and Response to COVID-19 in Myanmar (as of 29.5.2020)



Summary of new confirmed cases detection after first two cases (as of 29.5.2020)



- Confirmed cases were detected as peak in the 4th week after first confirmed cases due to religious event cluster .
- Confirmed cases were decreased but still raised than the first 3 weeks due to religious event cluster and workplace cluster.
- There were an increased in numbers of cases in week 7th after the first two cases due to household cluster linked with religious cluster.
- Confirmed cases were detected again in week 8 after the first two cases because of returnees .