



Ministry of Health and Sports (Myanmar)

Department of Public Health

Central Epidemiology Unit

(29 May 2020)

Coronavirus Disease 2019 (COVID-19)

Situation Report - 52

Data as reported by States and Regions by 1:00 AM MST 29 May 2020

Global Situation
(WHO situation report - 129)
data as of 14:30 MST 28 May 2020

Confirmed cases
5,596,550

Deaths
353,373

Case Fatality Rate
6.3 %



Myanmar Situation

Total tested
23,490

Confirmed cases
206

Negative
23,284

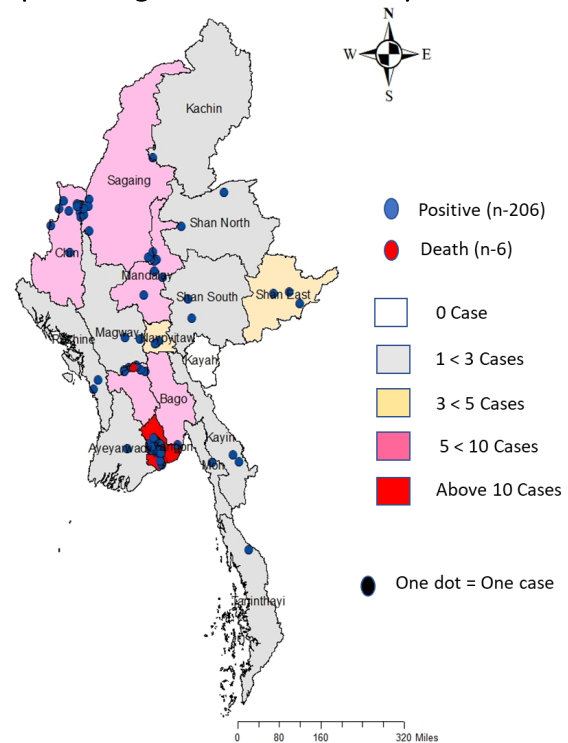
Recovered
130
63.1% of confirmed cases

Active
70
33.9% of confirmed cases

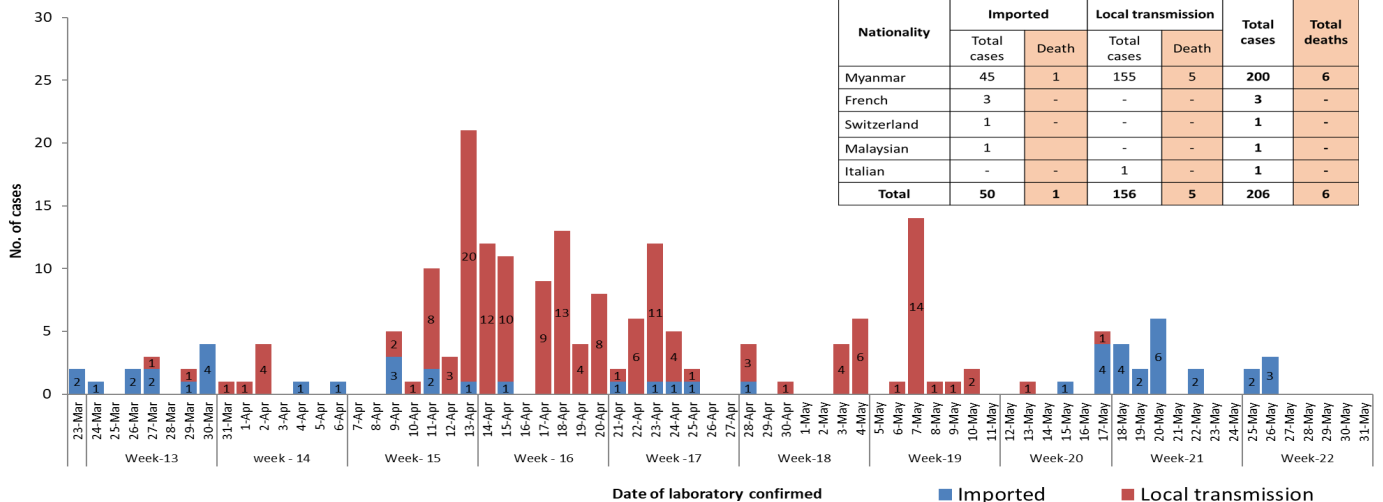
Death
6
2.9% of confirmed cases

No.	State/Region	COVID-19 Confirmed case	Recovered	Deaths
1.	Yangon	161	100 (2new)	5
2.	Chin	9	3 (1 new)	-
3.	Bago	7	6	1
4.	Sagaing	7	7 (1 new)	-
5.	Shan(East)	3	2	-
6.	Mandalay	3	3	-
7.	Shan(South)	2	2	-
8.	Shan(North)	2	2	-
9.	Naypyitaw	2	2	-
10.	Kayin	2	-	-
11.	Magway	2	1	-
12.	Rakhine	2	-	-
13.	Mon	1	1	-
14.	Kachin	1	1	-
15.	Thanintharyi	1	-	-
16.	Ayeyarwaddy	1	-	-
17.	Kayah	-	-	-
Total		206	130 (4 new)	6

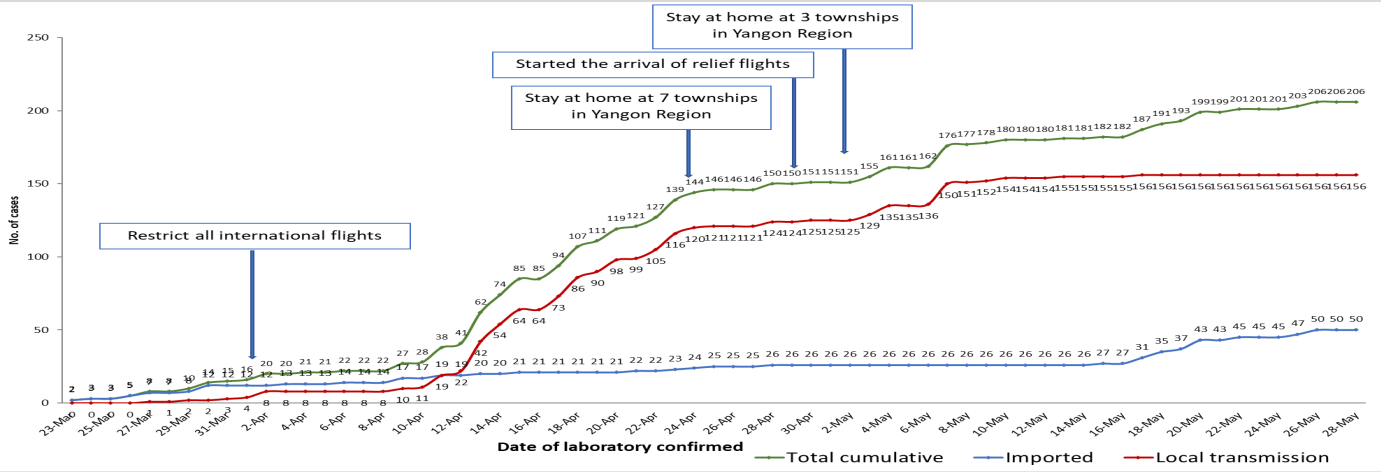
Map showing COVID-19 laboratory confirmed cases



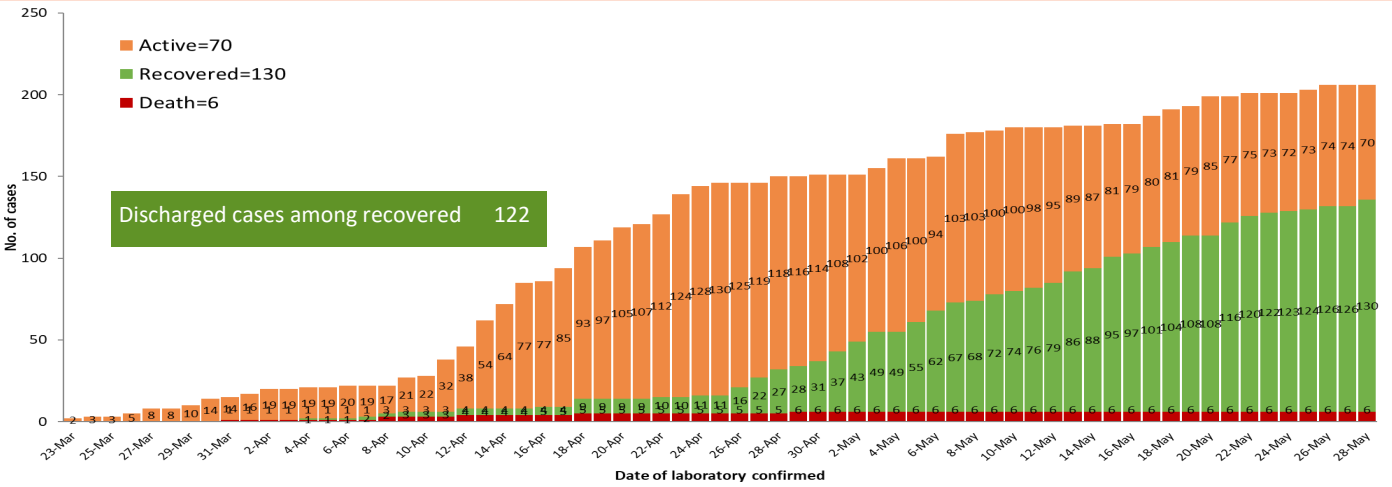
COVID-19 confirmed cases by types of transmissions (as of 29-5-2020, 1:00 am) n=206



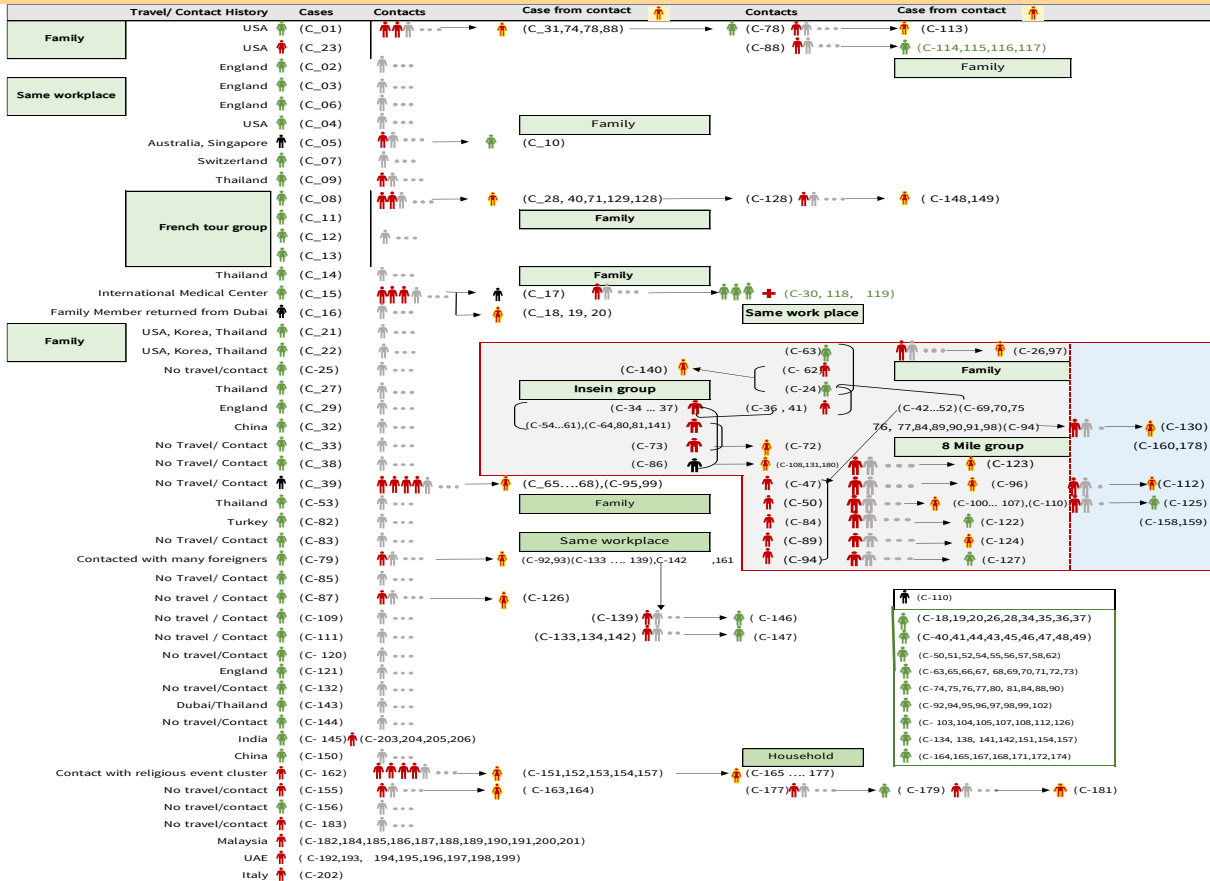
Total laboratory confirmed cases by date (as of 29.5.2020, 1:00 am), n= 206



Cumulative Number of active confirmed cases, recovered and death (23.3.2020-29.5.2020), n=206



Summary of COVID-19 confirmed cases (as of 28-5-2020), n (contacts)= 4,767



Summary of current situation

Type	New (27.5.2020-28.5.2020)	Total (on 28.5.2020)
Suspected and Person Under Investigation (PUI)	46	301
Hospital Quarantine	6	99
Facility Quarantine	2,897	51,846

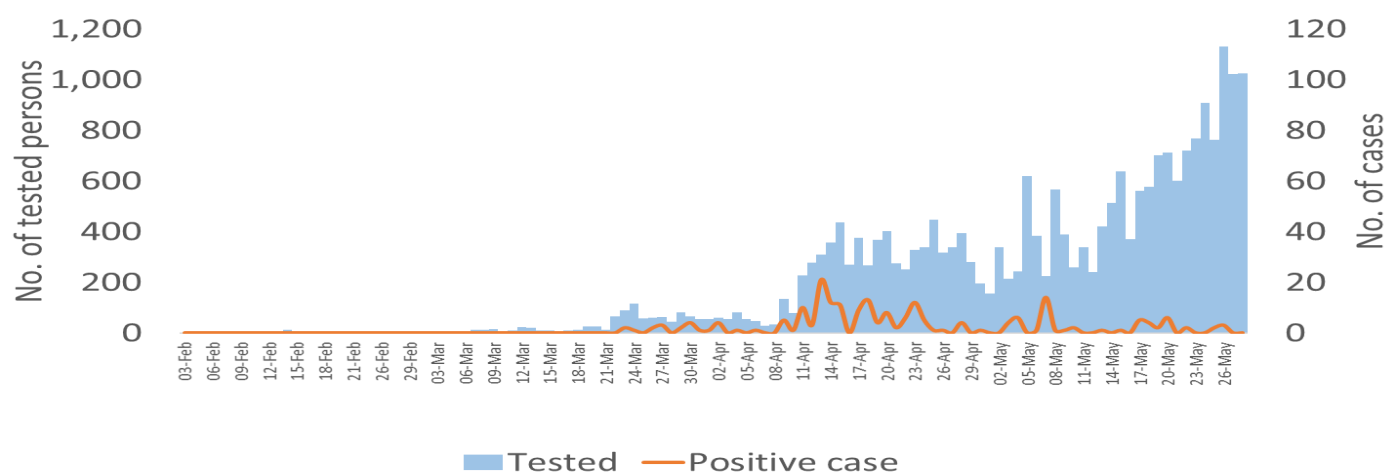
Person under Investigation (PUI) by State/Region hospitals (31.1.2020 – 28.5.2020) n= 4,889

No.	State/Region	PUI
1.	Yangon	2541
2.	Mandalay	871
3.	Shan (N)	185
4.	Bago	170
5.	Mon	166
6.	Magway	164
7.	Kayin	163
8.	Shan (E)	97
9.	Ayeyarwaddy	96
10.	Shan (S)	84
11.	Sagaing	74
12.	Kayah	67
13.	Naypyitaw	60
14.	Rakhine	54
15.	Tanintharyi	50
16.	Kachin	27
17.	Chin	20
Total		4,889

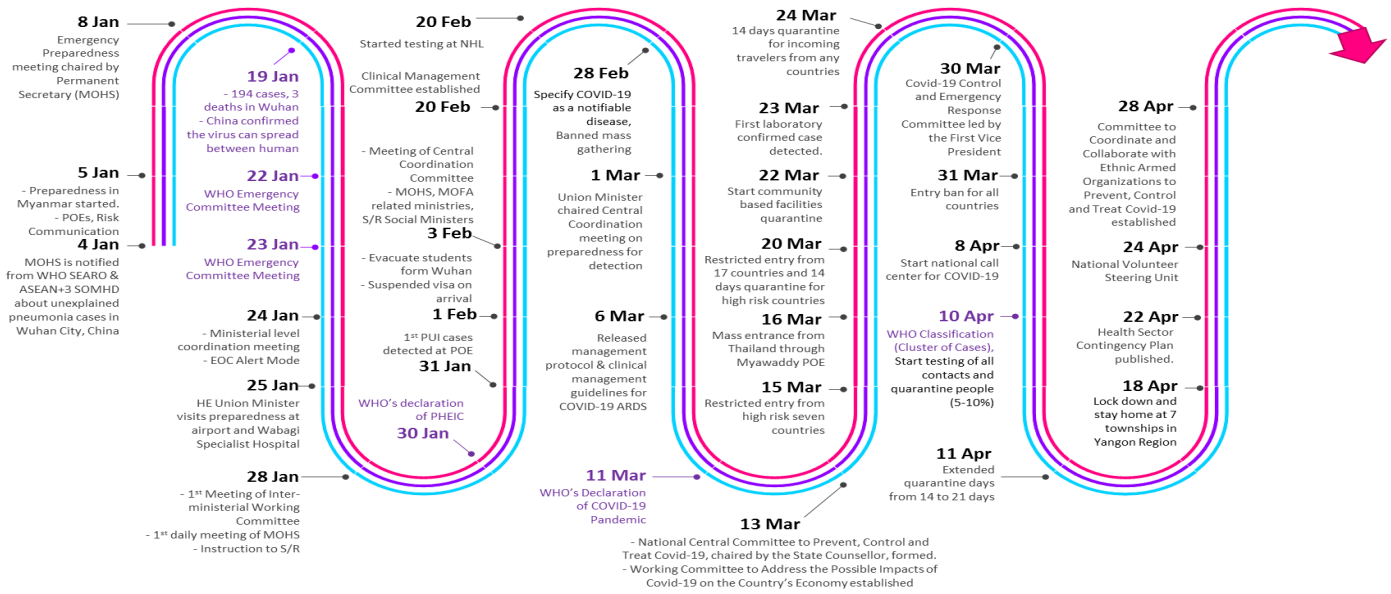
No. of Facility Quarantine sites and Quarantined people on 28.5.2020

No.	State/Region	No. of facilities	Total no. of quarantine people
1.	Magway	2,863	12,676
2.	Sagaing	1,859	6,612
3.	Kachin	660	5,729
4.	Mandalay	794	4,239
5.	Bago	473	4,114
6.	Rakhine	801	4,110
7.	Ayeyarwaddy	1,198	4,022
8.	Yangon	56	2,609
9.	Shan (N)	356	2,299
10.	Kayin	184	1,417
11.	Tanintharyi	189	1,237
12.	Shan(S)	114	1,051
13.	Naypyitaw	19	1,017
14.	Mon	29	826
15.	Shan (E)	11	416
16.	Chin	47	310
17.	Kayah	18	162
Total		9,671	51,846

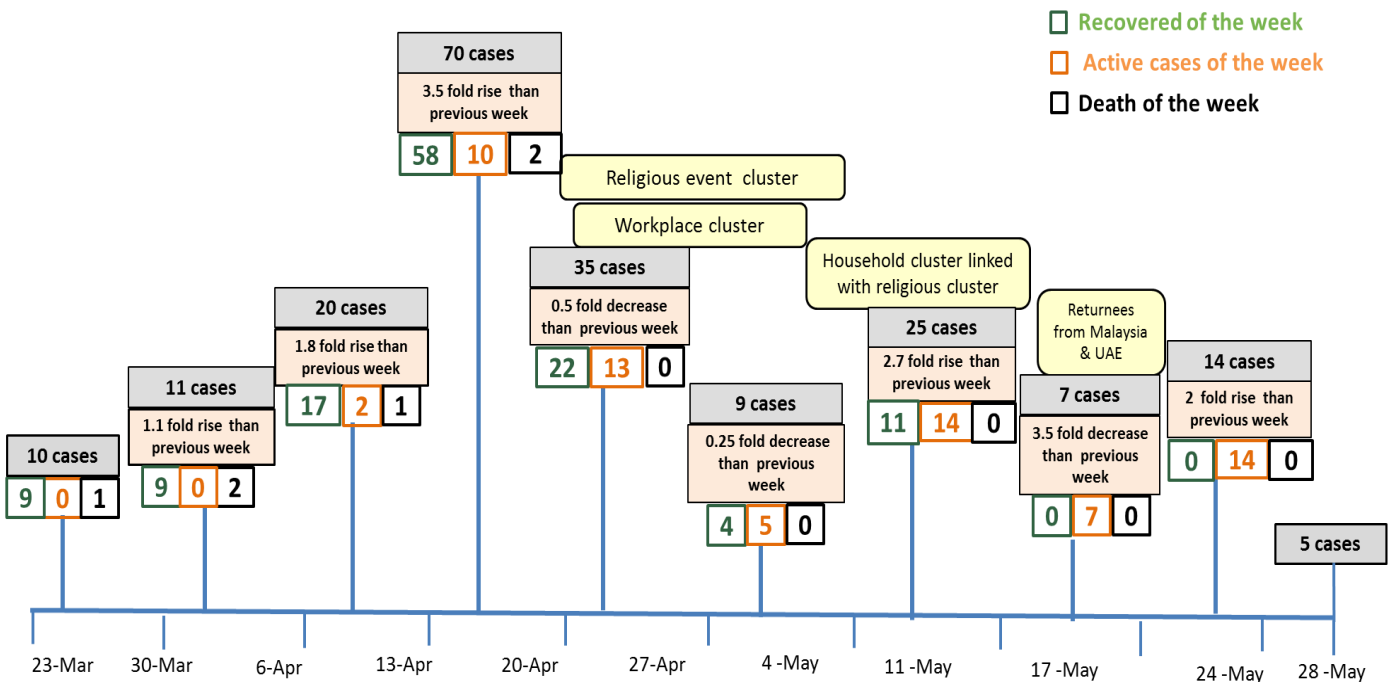
COVID-19 confirmed cases among tested by date (as of 28.5.2020)



Timeline of Preparedness and Response to COVID-19 in Myanmar (as of 28.5.2020)



Summary of new confirmed cases detection after first two cases (as of 28.5.2020)



- Confirmed cases were detected as peak in the 4th week after first confirmed cases due to religious event cluster .
- Confirmed cases were decreased but still raised than the first 3 weeks due to religious event cluster and workplace cluster.
- There were an increased in numbers of cases in week 7th after the first two cases due to household cluster linked with religious cluster.

Hotline Number— 0673 420 268

Data source - CEU, DMS, NHL, DMR, State and Region Health Departments