



Ministry of Health and Sports (Myanmar)

Department of Public Health

Central Epidemiology Unit

(4 August 2020)

Coronavirus Disease 2019 (COVID-19)

Situation Report - 119

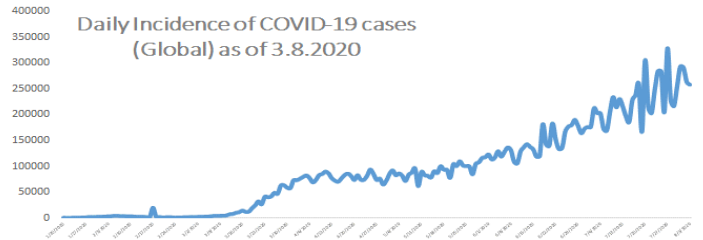
Data as reported by States and Regions by 8:30 PM MST 3 August 2020

Global Situation (WHO situation report - 196) data as of 14:30 MST 3 August 2020

Confirmed cases
17,918,582

Deaths
686,703

Case Fatality Rate
3.8 %



Myanmar Situation

Total Tested

120,292

Confirmed Cases

355

Negative

119,937

Recovered

302

85.5% of Confirmed cases

Active

47

13.2% of Confirmed cases

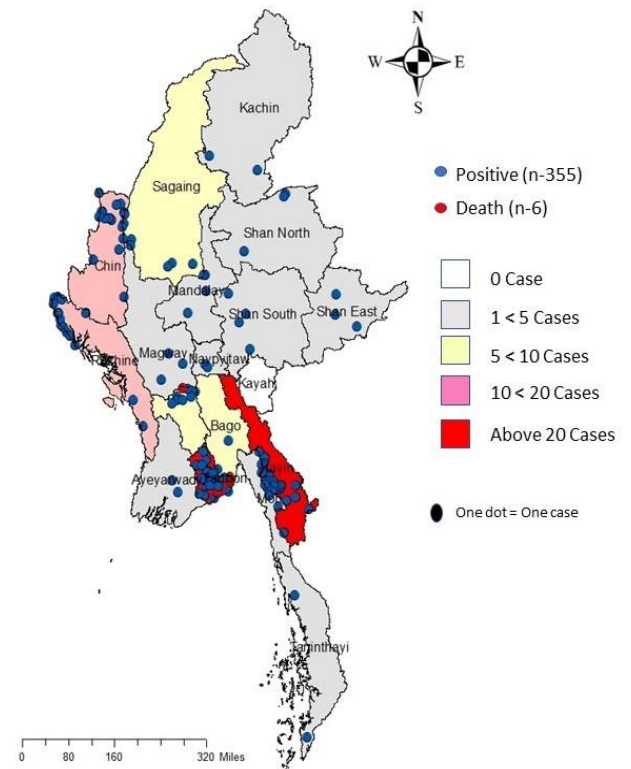
Death

6

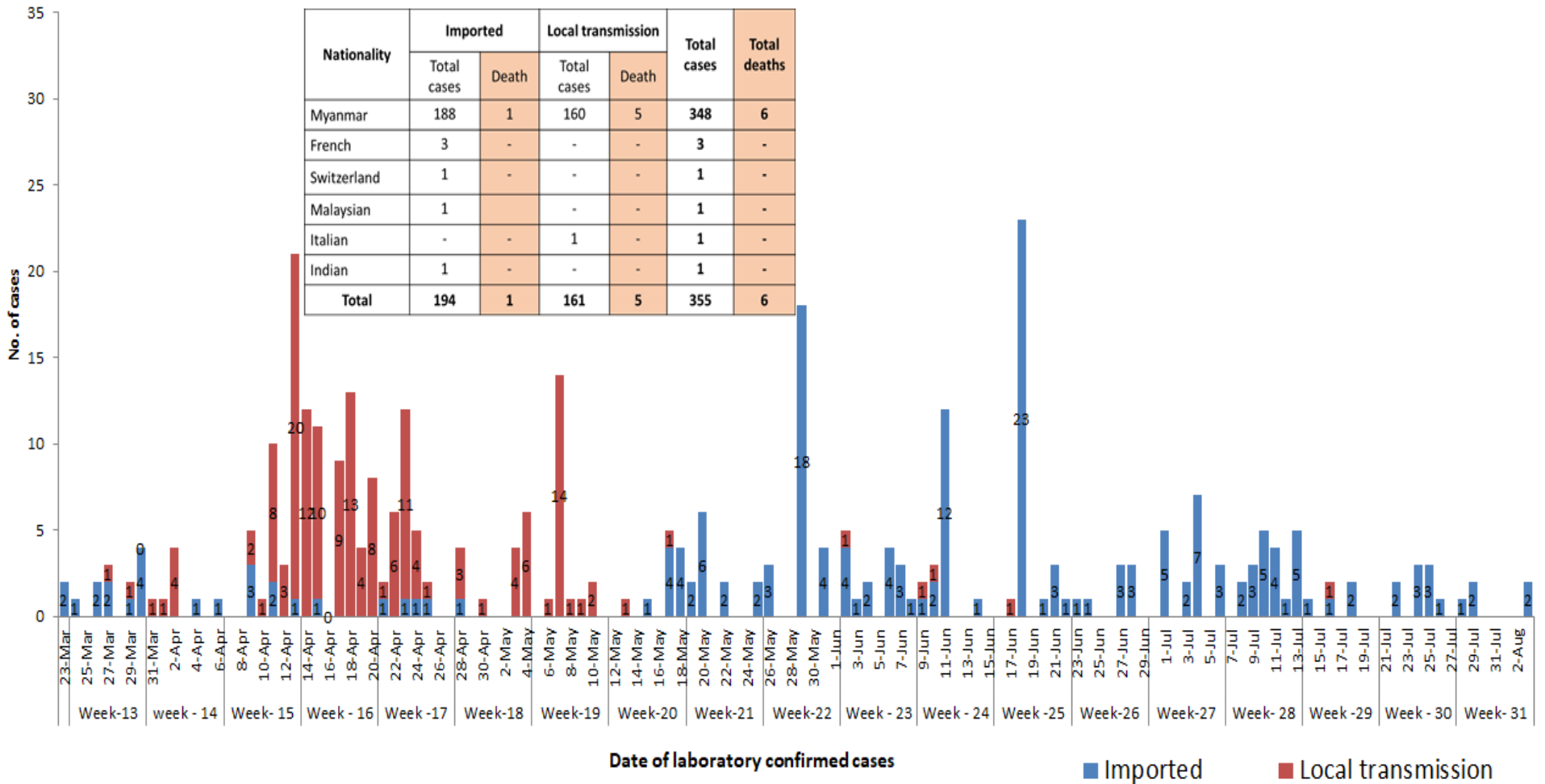
1.6% of Confirmed cases

No	State/Region	COVID –19 Confirmed case	Recovered	Deaths
1	Yangon	251(2 New)	207	5
2	Kayin	29	25	-
3	Rakhine	16	16	-
4	Chin	14	11	-
5	Sagaing	9	9	-
6	Bago	9	8	1
7	Shan (South)	4	4	-
8	Mandalay	4	4	-
9	Shan (East)	3	3	-
10	Shan (North)	3	3	-
11	Magway	3	3	-
12	Naypyitaw	2	2	-
13	Ayeyarwaddy	2	2	-
14	Kachin	2	2	-
15	Mon	2	2	-
16	Thanintharyi	2	1	-
17	Kayah	-	-	-
Total		355(2 New)	302	6

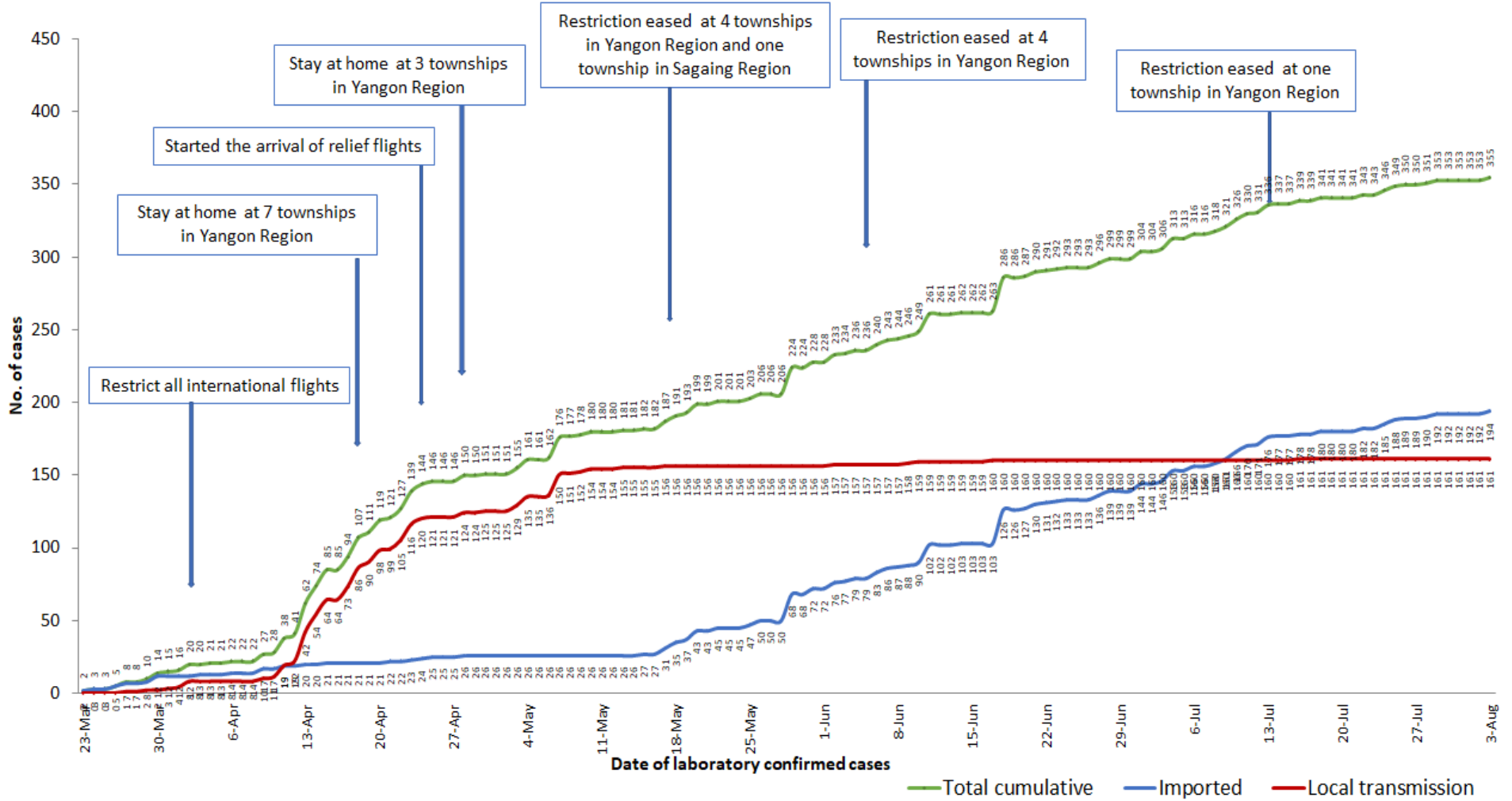
Map showing COVID-19 laboratory confirmed cases



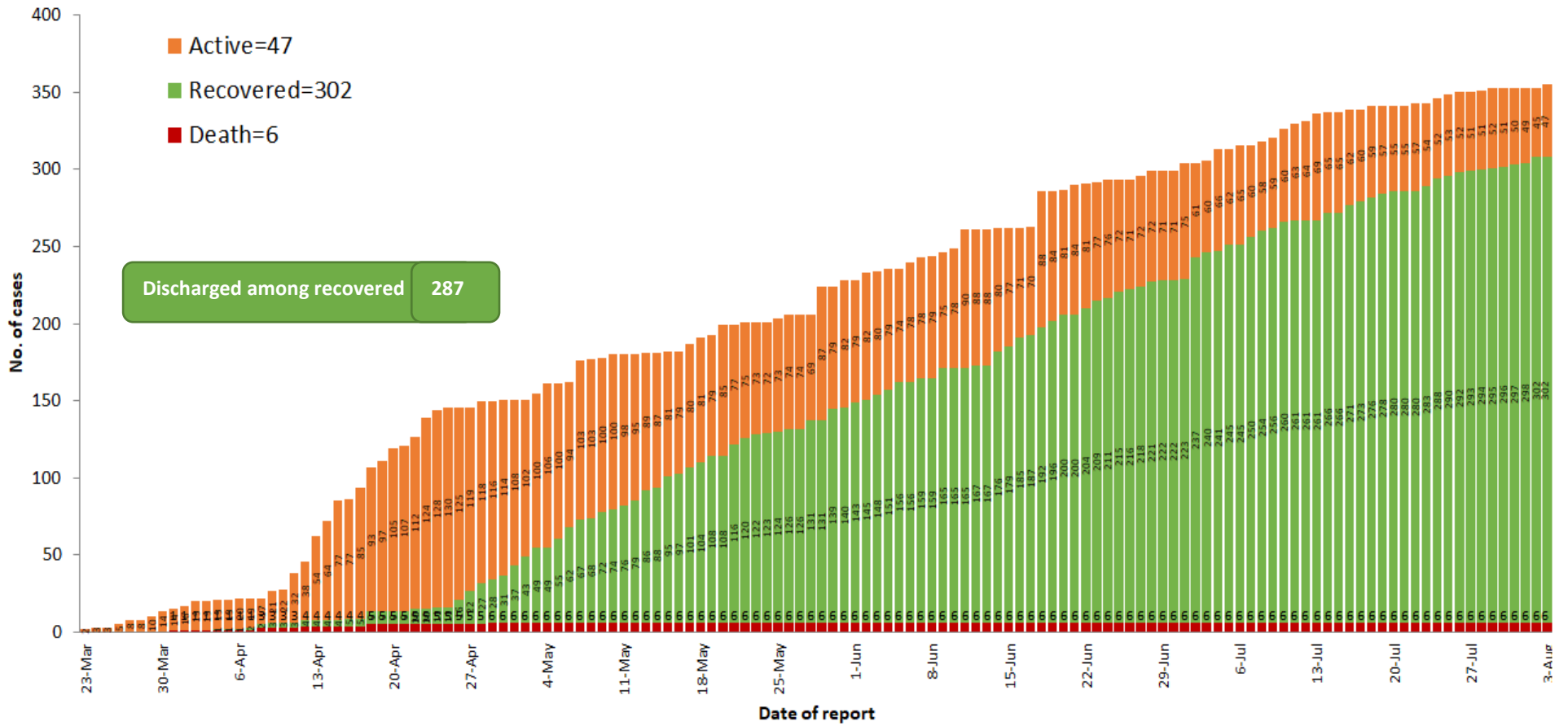
COVID-19 confirmed cases by types of transmissions (as of 3.8.2020, 8:30 pm) n=355



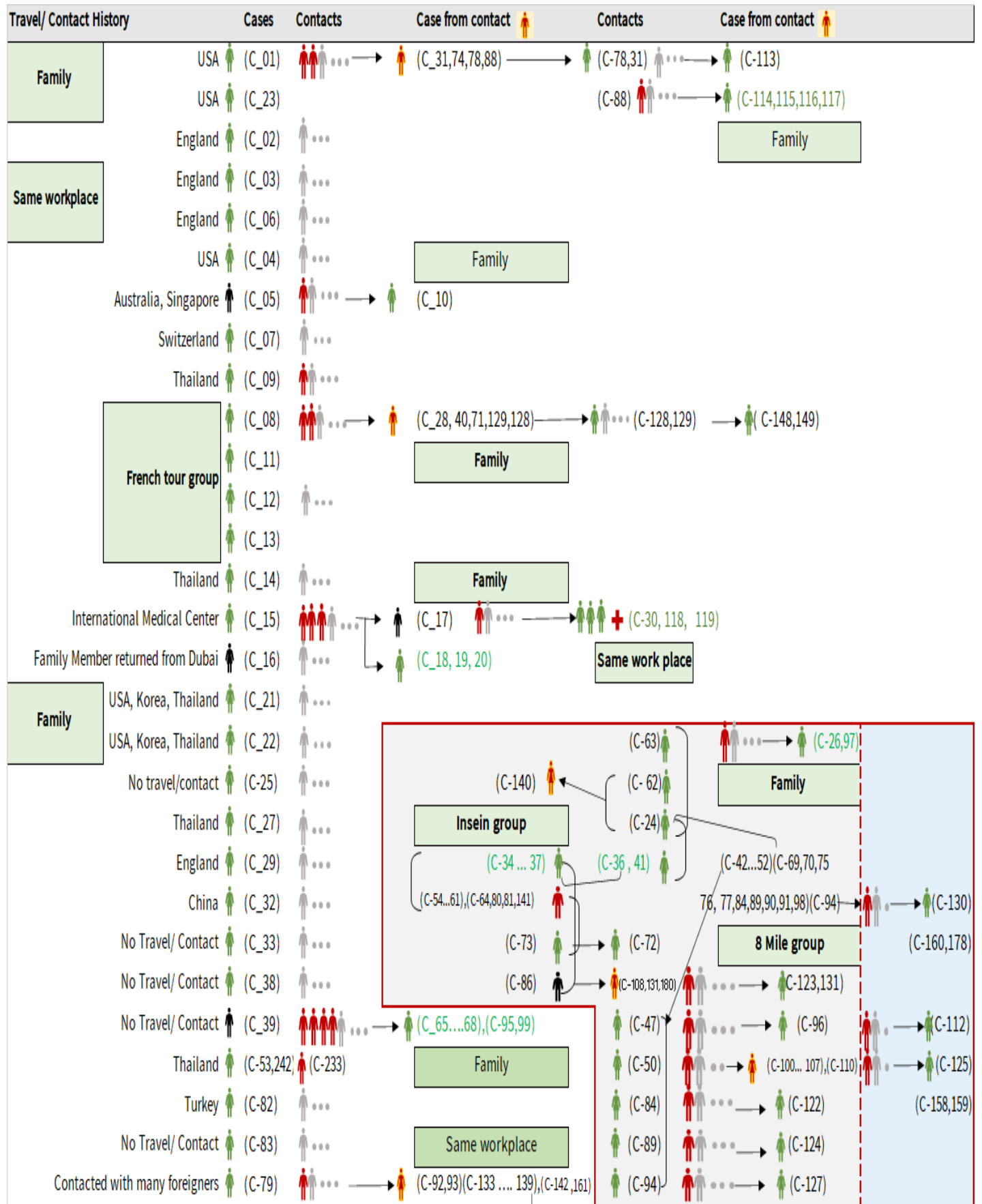
Total laboratory confirmed cases by date (as of 3.8.2020, 8:30 pm), n= 355



Cumulative Number of active confirmed cases, recovered and deaths (23.3.2020 – 3.8.2020), n (cumulative)=355



Summary of COVID-19 confirmed cases (as of 3.8.2020), n (contacts)= 5,781



Summary of COVID-19 confirmed cases (as of 3.8.2020), n (contacts)= 5,781

Travel/ Contact History	Cases	Contacts	Case from contact	Contacts	Case from contact
No Travel/ Contact	(C-85)	...			(C-110)
No travel / Contact	(C-87)	... → (C-126)			(C-28,40,42,43,44,45,46,48,49,51,52)
No travel / Contact	(C-109)	...	(C-139) ... → (C-146)		(C-54,55,56,57,58,60,61,63,64,69,70)
No travel / Contact	(C-111)	...	(C-133,134,142) ... → (C-147)		(C-71,74,75,76,77,80,81,88,90,91,92,93)
No travel/Contact	(C-120)	...			(C-98,100,101,102,103,104,105,106,107,108)
England	(C-327)	(C-121,302,303,317)			(C-133,134,135,136,137,138,139,140,141,142)
No travel/Contact	(C-132)	...			(C-151,152,153,154,157,158,159,160,161)
Dubai/Thailand	(C-143)	...			(C-164,165,167,168,170,171,172,174)
No travel/Contact	(C-144)	...			(C-178,184,189,191,193,205,207,216,217,218)
India	(C-145,204,209,210,212,213,215,220,221,223,224,229,225,227,228,252,255,259,296,299,305,306,3				(C-226,233,234,235,237,246,253,258)
China	(C-150,230)				
Contact with religious event cluster	(C-162)	... → (C-151,152,153,154,157) → (C-165 ... 177) (C-166,169,173,175,176,177)			
No travel/contact	(C-155)	... → (C-163,164) (163) → (C-177) ... → (C-179) ... → (C-181)			
No travel/contact	(C-156)	...			
No travel/contact	(C-183)	...			
Malaysia	(C-184,189,273,280,351,353)	(C-182,185,186,191,188,190,187,200,201,232,275,282)			
UAE	(C-301,315,316,337)	(C-193,192,194,195,196,197,198,199,300,301,314,340)			
Italy	(C-243,202)				
No travel/Contact	(C-231)				
Bangladesh	(C-234,244,247,250,262,309,310,334)	(C-244,245,247,248,250,262,291,292,293,308,325,326,348)			
No travel/contact	(C-245)	...			
No travel/contact	(C-249)				
No travel/contact	(C-263)	...			
Thailand	(C-279,332,333,335,346,349,352)	(C-264,265,266,267,268,269,270,271,272,273,274,276,277,278,280,281,283,284,285,286,287,294,304,312,336,338)			
Quata	(C-288,354,355)	(C-289,290)			
India	(C-203,205.....214,216...219,221....229,....240,241,246,253,254...258,260,261,295,297,298,307,322,323,324,344,345)	(C-251,328,329,330)			
Lao	(C-311)	...			
Singapore	(C-313)	...			
Philippines	(C-319,321,342,343)	(C-320)			
USA	(C-347,350)	(C-331)			
No travel/contact	(C-339)	...			

Summary of current situation

Type	New (2.8.2020-3.8.2020)	Total (on 3.8.2020)
Suspected and Person Under Investigation (PUI)	21	125
Hospital Quarantine	2	41
Facility Quarantine	552	18,346

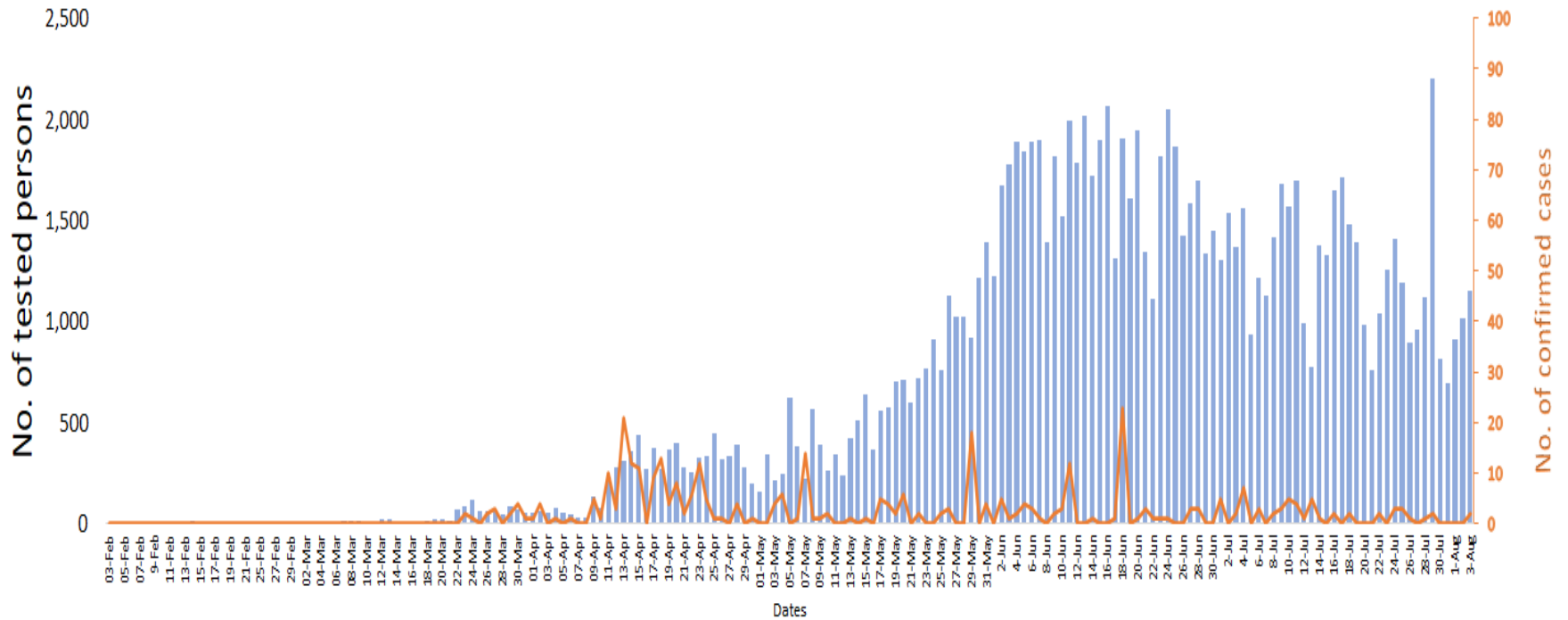
Person under Investigation (PUI) by State/Region hospitals (31.1.2020 – 3.8.2020) n= 6,856

No.	State/Region	PUI
1	Yangon	3428
2	Mandalay	1416
3	Kayin	306
4	Mon	284
5	Shan (N)	240
6	Magway	217
7	Bago	181
8	Shan (E)	126
9	Shan (S)	104
10	Ayeyarwaddy	102
11	Sagaing	90
12	Kayah	81
13	Thanintharyi	75
14	Rakhine	69
15	Naypyitaw	64
16	Kachin	43
17	Chin	30
Total		6,856

No. of Facility Quarantine sites and Quarantined people on 3.8.2020

No.	State/Region	No. of facilities	Total no. of quarantine
1	Yangon	54	3241
2	Mon	256	2491
3	Bago	222	2322
4	Kayin	355	2206
5	Tanintharyi	189	1699
6	Magway	418	1538
7	Sagaing	170	1002
8	Mandalay	66	783
9	Rakhine	247	749
10	Ayeyarwaddy	167	576
11	Kachin	426	560
12	Shan South	79	534
13	Naypyitaw	1	265
14	Shan North	269	239
15	Kayah	18	80
16	Chin	18	59
17	Shan East	9	2
Total		2,964	18,346

COVID-19 confirmed cases among tested by date (as of 3.8.2020)

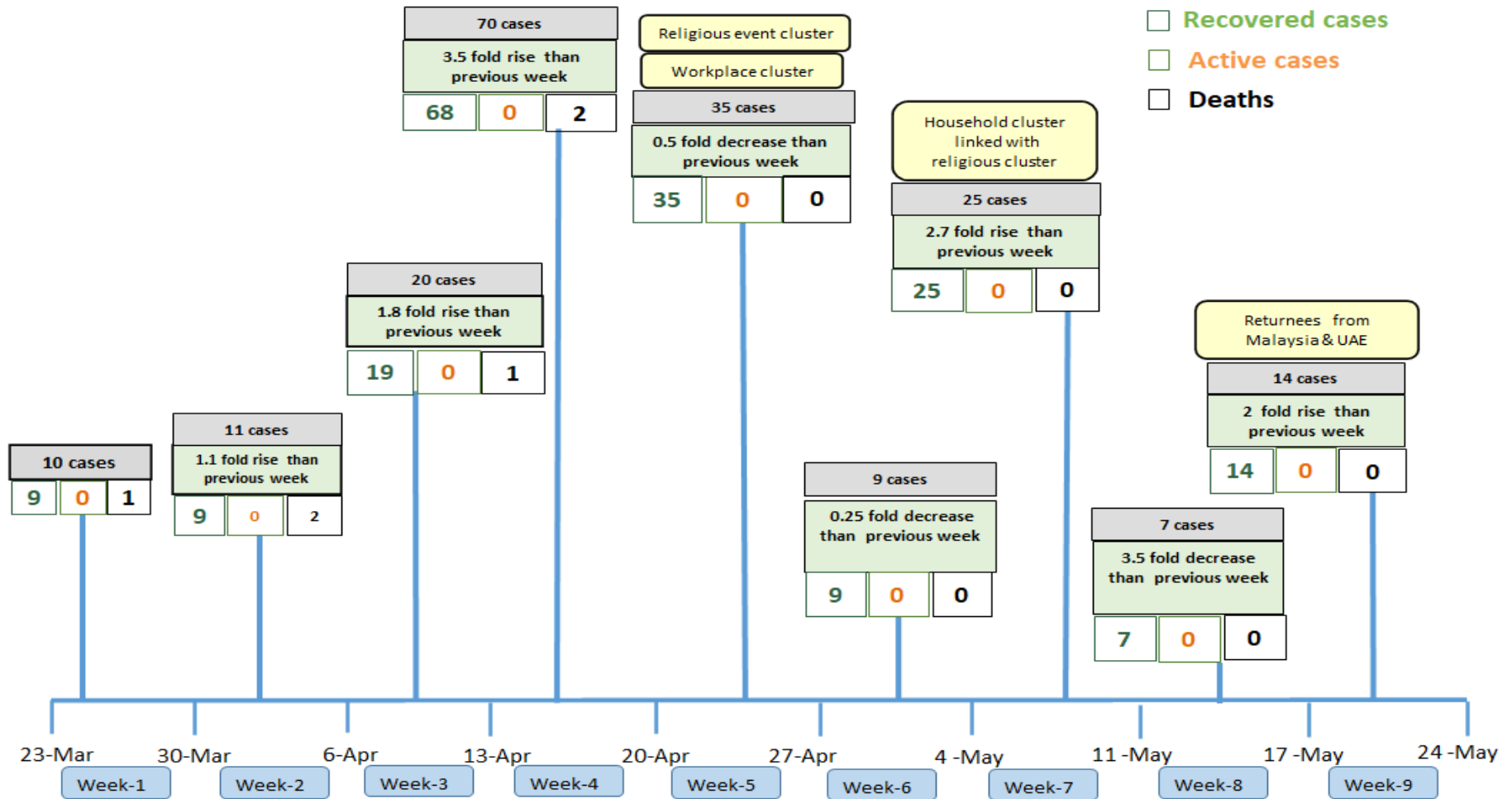


Total tested persons - 120,292

Total confirmed cases - 355

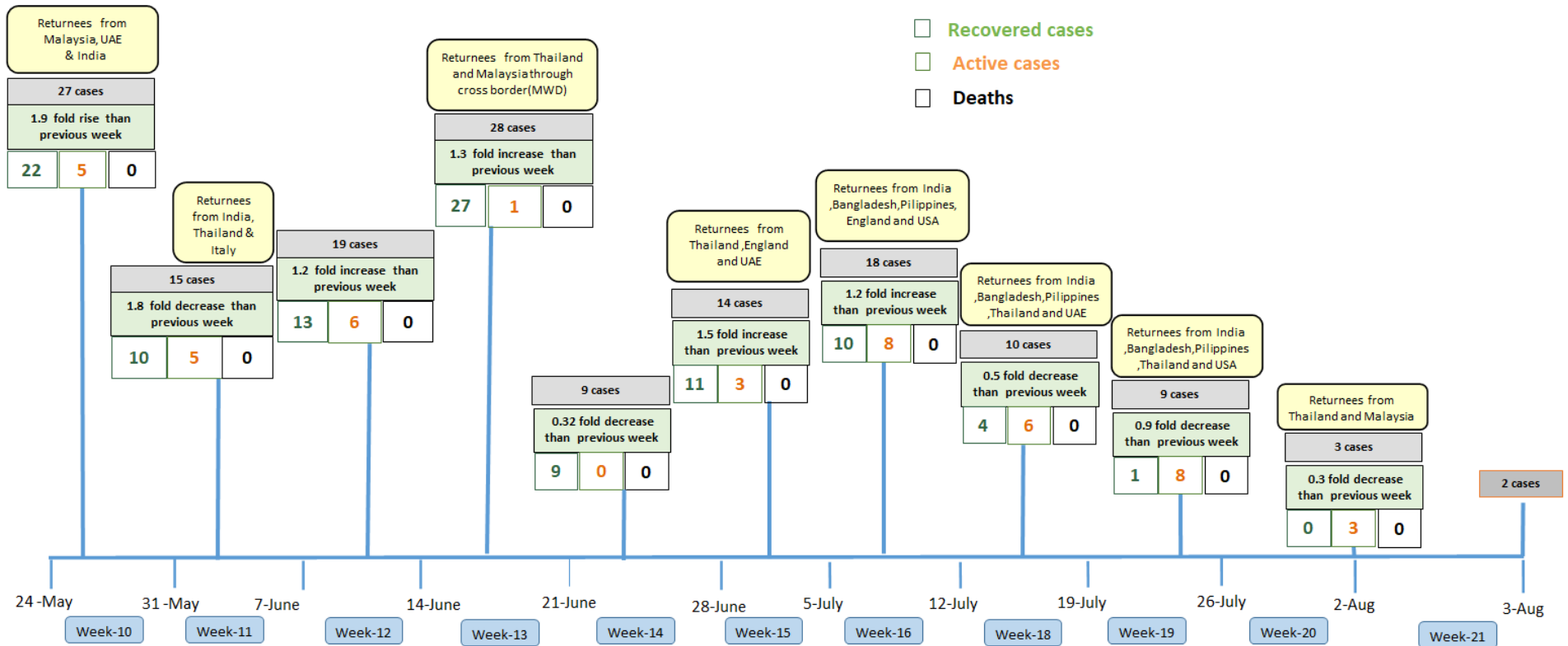
Tested person Confirmed case

Summary of new confirmed cases detection after first two cases (as of 3.8.2020)



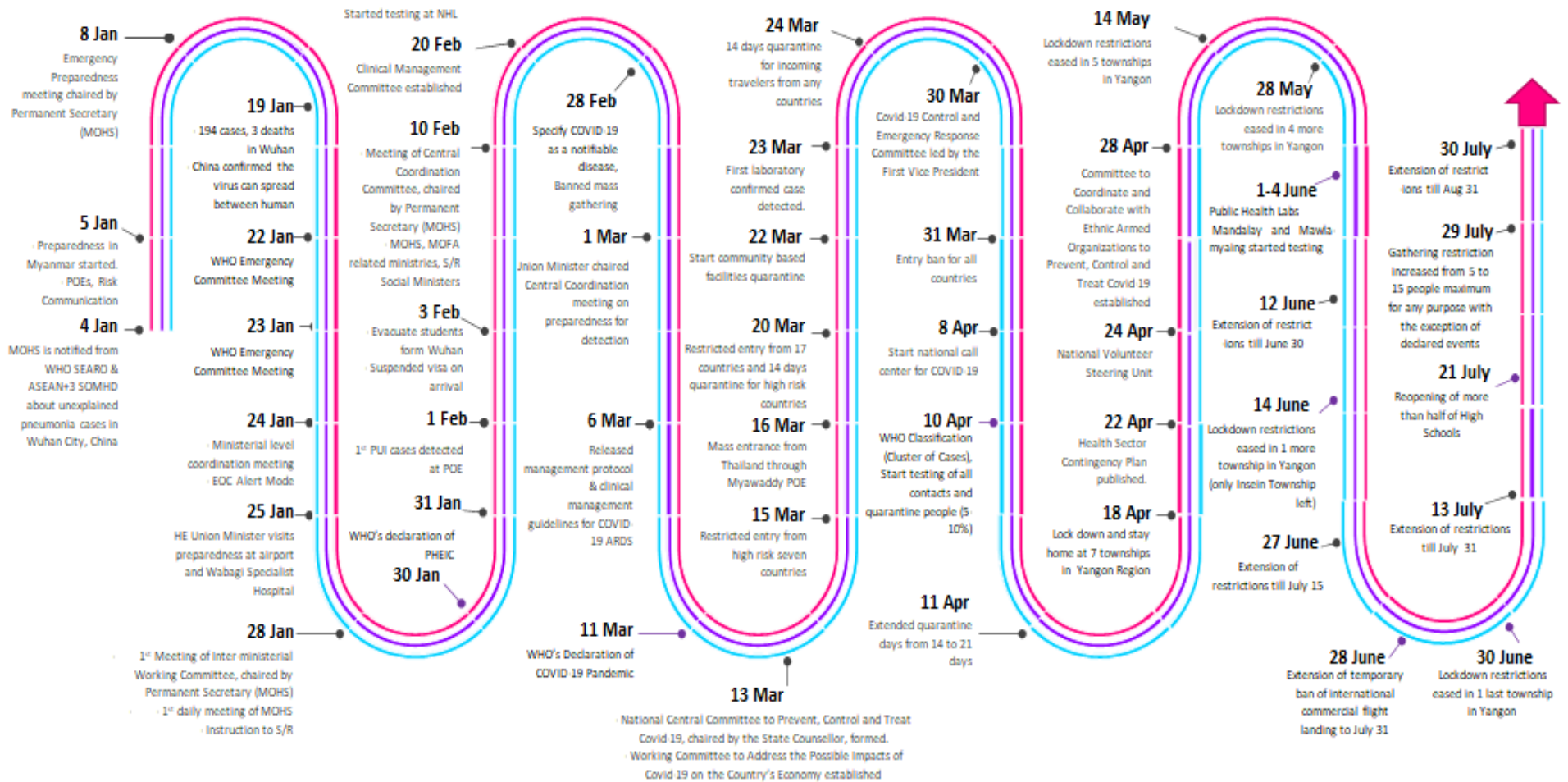
- Confirmed cases were detected as a peak in the 4th week after first confirmed cases due to the religious event cluster.
- Confirmed cases were decreased but still raised than the first 3 weeks due to the religious event cluster and workplace cluster.
- There were an increased in numbers of cases in the 7th week after the first two cases due to the household cluster linked with a religious cluster.
- Confirmed cases were detected by a nearly two-fold rise in the 9th and 10th weeks after the first two cases because of returnees coming back by relief flights.

Summary of new confirmed cases detection after first two cases (as of 3.8.2020)



- Confirmed cases were detected as a peak in the 4th week after first confirmed cases due to the religious event cluster.
- Confirmed cases were decreased but still raised than the first 3 weeks due to the religious event cluster and workplace cluster.
- There were an increased in numbers of cases in the 7th week after the first two cases due to the household cluster linked with a religious cluster.
- Confirmed cases were detected by a nearly two-fold rise in the 9th and 10th weeks after the first two cases because of returnees coming back by relief flights.

Timeline of Preparedness and Response to COVID-19 in Myanmar (as of 3.8.2020)



Hotline Number— 0673 420 268

Data source - CEU, DMS, NHL, PHL (MDY and MLM), DMR, DSGH, State and Region Health Departments