



Ministry of Health and Sports (Myanmar)

Department of Public Health

Central Epidemiology Unit

(23 June 2020)

Coronavirus Disease 2019 (COVID-19)

Situation Report - 77

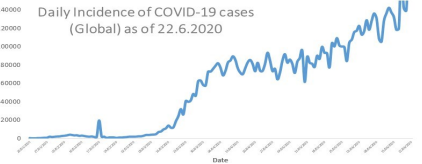
Data as reported by States and Regions by 11:30 PM MST 22 June 2020

Global Situation
(WHO situation report - 154)
data as of 14:30 MST 22 June 2020

Confirmed cases
8,860,331

Deaths
465,740

Case Fatality Rate
5.2 %



Myanmar Situation

Total tested
64,532

Confirmed cases
291

Negative
64,241

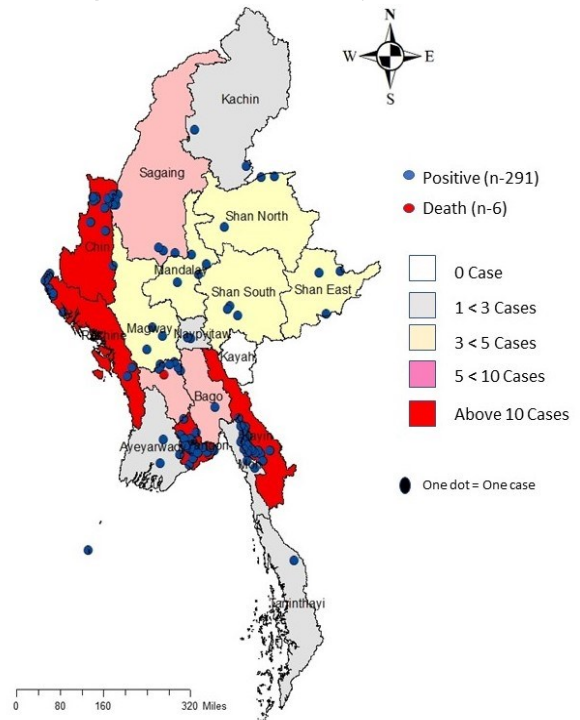
Recovered
204
70.1 % of confirmed cases

Active
81
27.8 % of confirmed cases

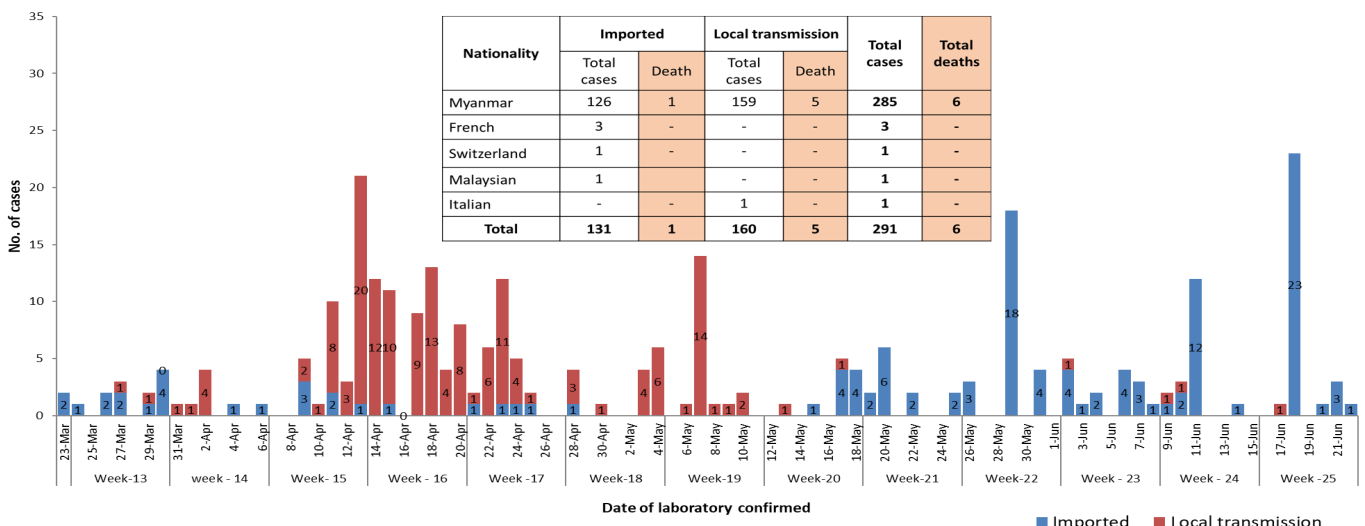
Death
6
2.1 % of confirmed cases

No.	State/Region	COVID -19 Confirmed	Recovered	Deaths
1	Yangon	204	158 (1 New)	5
2	Kayin	25	2 (1 New)	-
3	Chin	10	6	-
4	Rakhine	10 (1 New)	3 (1 New)	-
5	Sagaing	9	7	-
6	Bago	8	7	1
7	Shan(South)	4	3 (1 New)	-
8	Mandalay	3	3	-
9	Shan(East)	3	4	-
10	Shan(North)	3	2	-
11	Magway	3	2	-
12	Naypyitaw	2	2	-
13	Ayeyarwaddy	2	2	-
14	Kachin	2	1	-
15	Mon	2	1	-
16	Thanintharyi	1	1	-
17	Kayah	-	-	-
Total		291 (1 New)	204 (4 New)	6

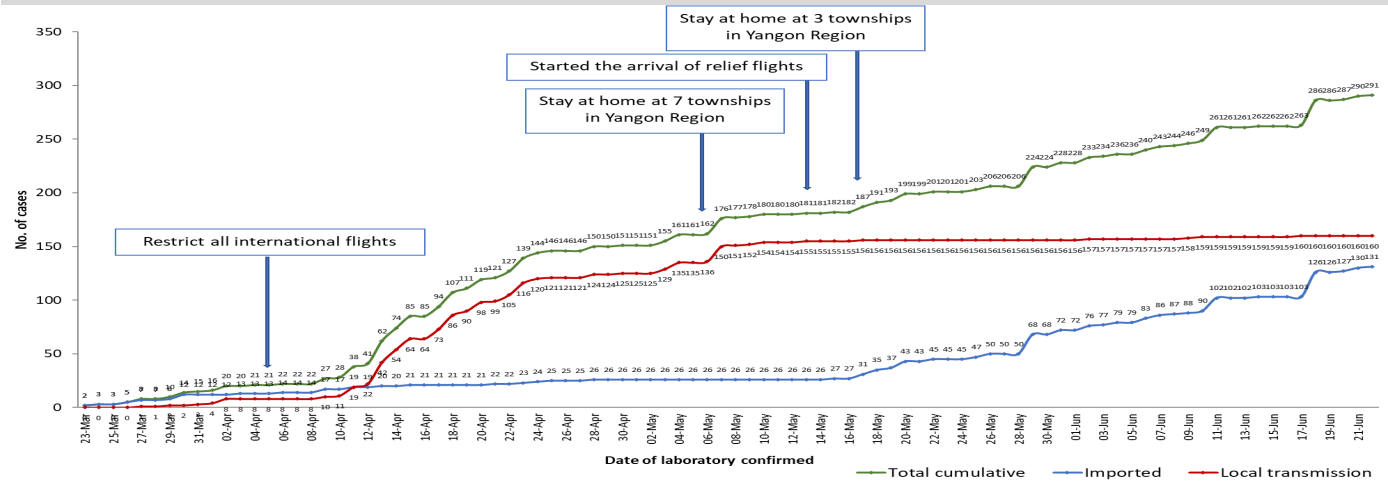
Map showing COVID-19 laboratory confirmed cases



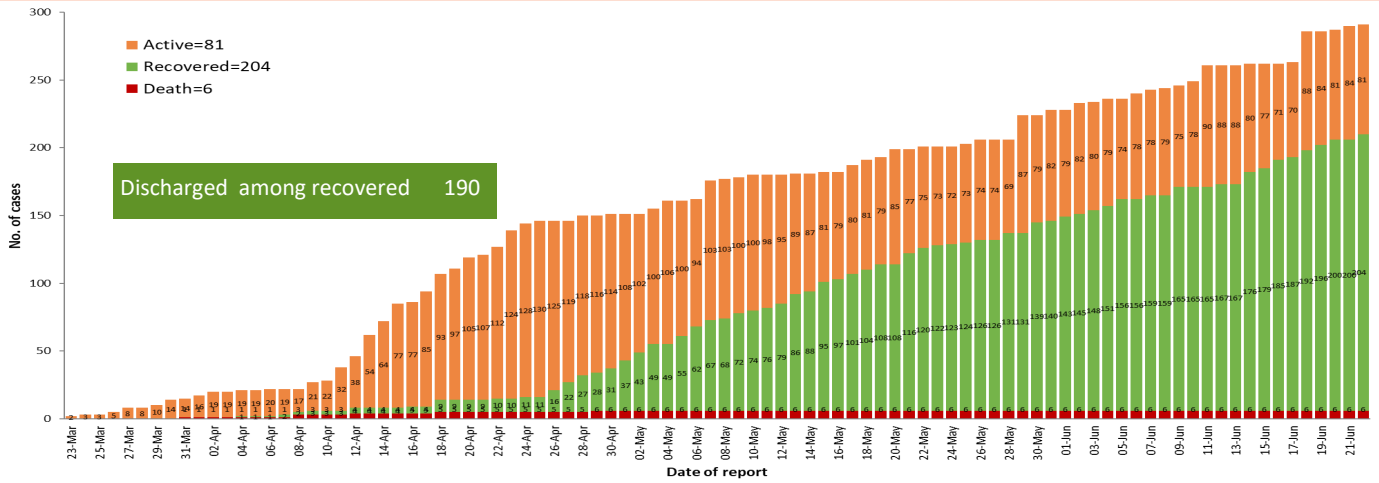
COVID-19 confirmed cases by types of transmissions (as of 22.6.2020, 11:30 pm) n=291



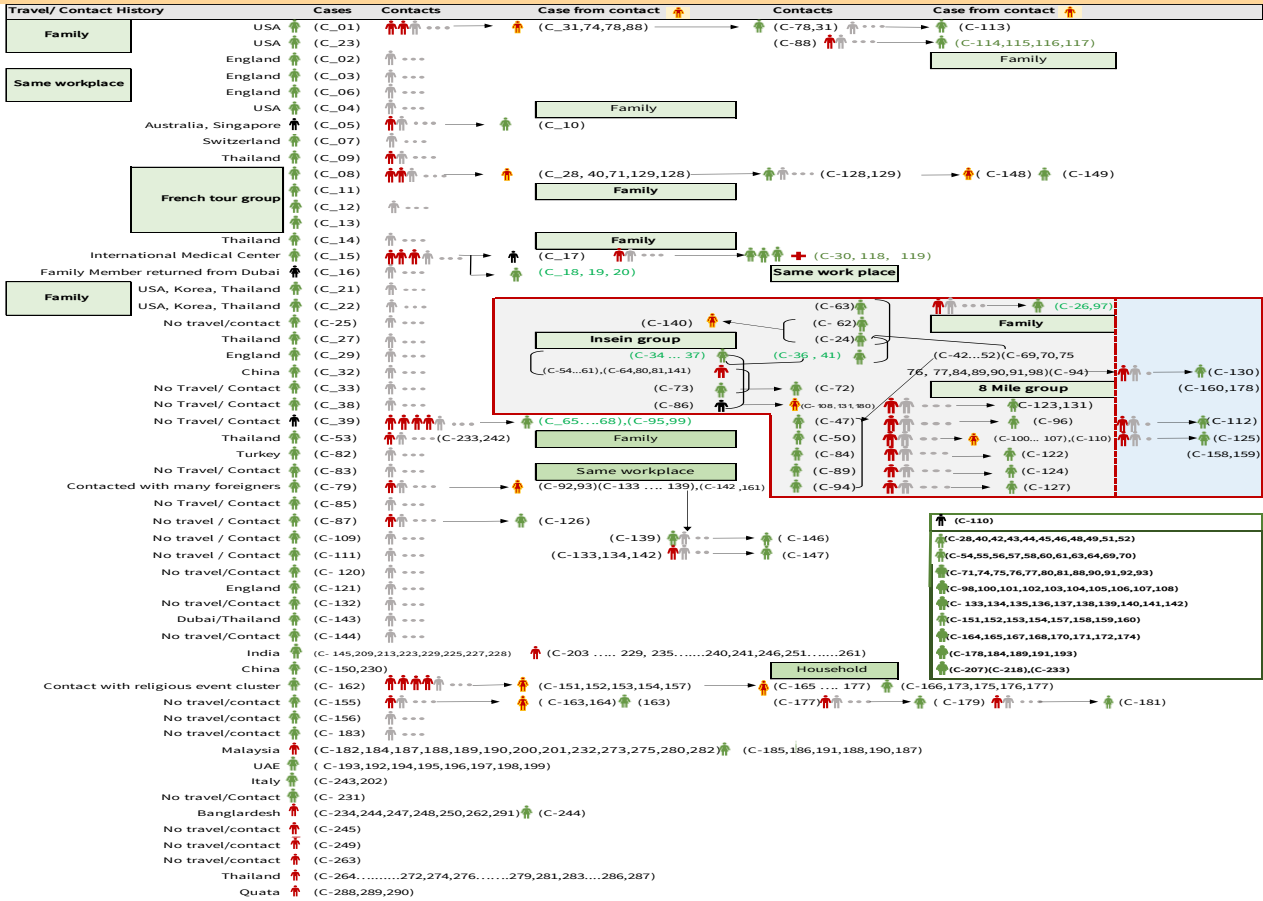
Total laboratory confirmed cases by date (as of 22.6.2020, 11:30 pm), n= 291



Cumulative Number of active confirmed cases, recovered and deaths (23.3.2020 – 22.6.2020), n (cumulative)=291



Summary of COVID-19 confirmed cases (as of 22.6.2020) ,n (contacts)= 5,513



Summary of current situation

Type	New (21.6.2020-22.6.2020)	Total (on 22.6.2020)
Suspected and Person Under Investigation (PUI)	24	221
Hospital Quarantine	4	89
Facility Quarantine	874	36,625

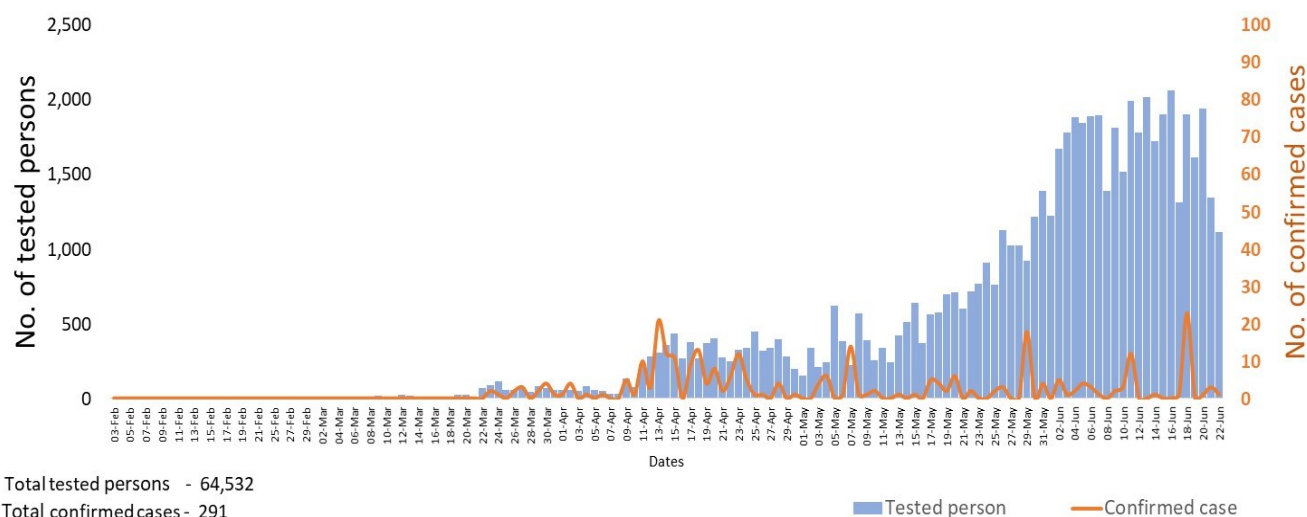
Person under Investigation (PUI) by State/Region hospitals (21.6.2020 – 22.6.2020) n= 5,759

No.	State/Region	PUI
1.	Yangon	2,960
2.	Mandalay	1,093
3.	Kayin	221
4.	Mon	211
5.	Shan (N)	198
6.	Magway	192
7.	Bago	179
8.	Shan (E)	113
9.	Ayeyarwaddy	102
10.	Shan(S)	95
11.	Sagaing	83
12.	Kayah	76
13.	Naypyitaw	63
14.	Rakhine	60
15.	Thanintharyi	58
16.	Kachin	33
17.	Chin	22
Total		5,759

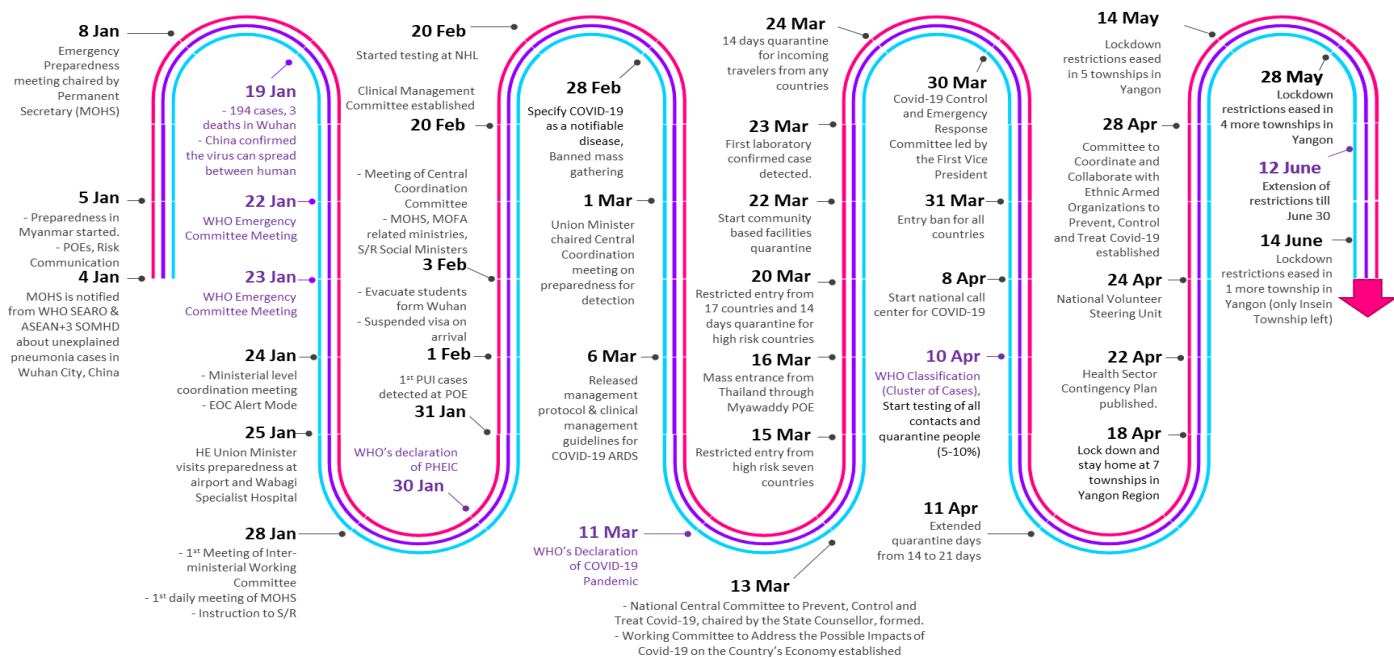
No. of Facility Quarantine sites and Quarantined people on 22.6.2020

No.	State/Region	No. of facilities	Total no. of quarantine
1.	Bago	394	4,889
2.	Magway	2,619	4,654
3.	Kayin	965	4,326
4.	Mon	352	3,653
5.	Yangon	83	3,190
6.	Kachin	409	2,952
7.	Mandalay	125	2,051
8.	Rakhine	469	2,031
9.	Sagaing	969	1,928
10.	Shan South	158	1,661
11.	Ayeyarwaddy	206	1,499
12.	Tanintharyi	189	1,292
13.	Shan North	241	1,007
14.	Naypyitaw	19	910
15.	Chin	30	241
16.	Kayah	18	177
17.	Shan East	11	164
Total		7,257	36,625

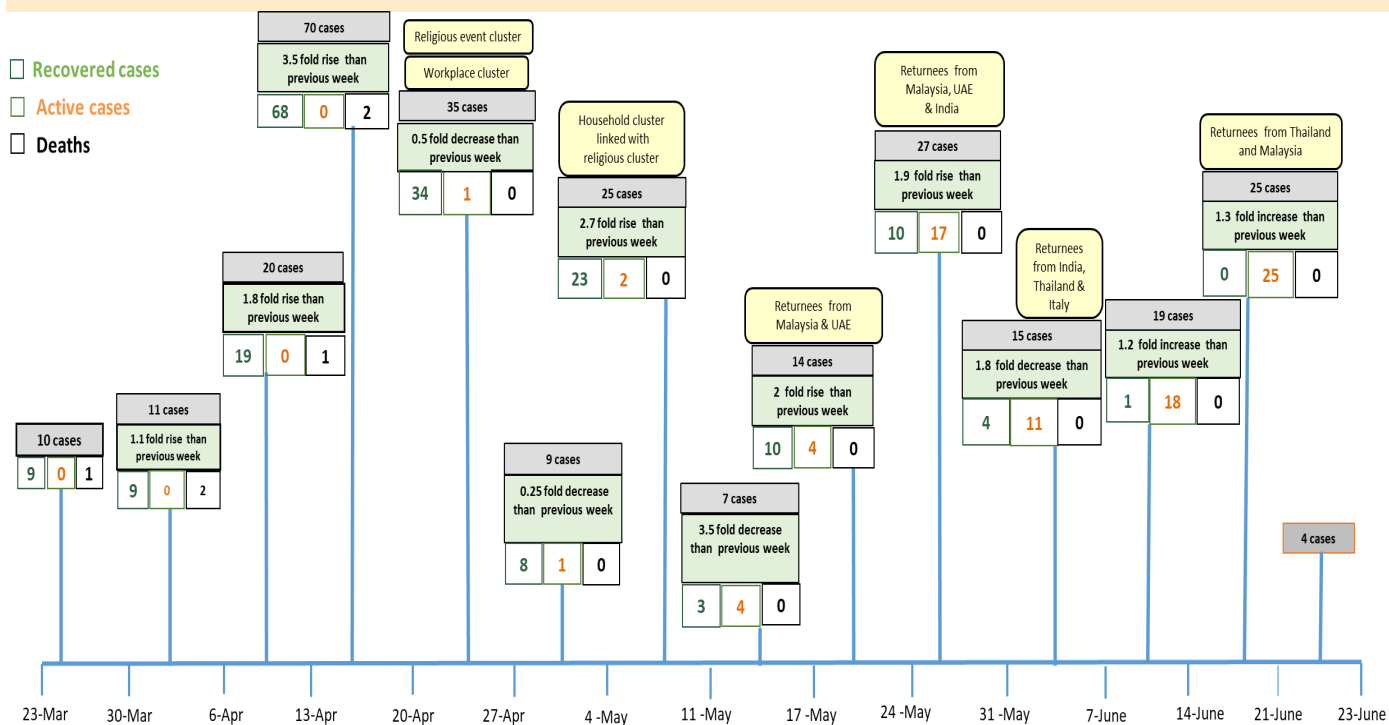
COVID-19 confirmed cases among tested by date (as of 22.6.2020)



Timeline of Preparedness and Response to COVID-19 in Myanmar (as of 22.6.2020)



Summary of new confirmed cases detection after first two cases (as of 22.6.2020)



- Confirmed cases were detected as a peak in the 4th week after first confirmed cases due to the religious event cluster.
- Confirmed cases were decreased but still raised than the first 3 weeks due to the religious event cluster and workplace cluster.
- There were an increased in numbers of cases in the 7th week after the first two cases due to the household cluster linked with a religious cluster.
- Confirmed cases were detected by a nearly two-fold rise in the 9th and 10th weeks after the first two cases because of returnees coming back by relief flights.