



# Ministry of Health and Sports (Myanmar)

## Department of Public Health

### Central Epidemiology Unit

( 22 April 2020)

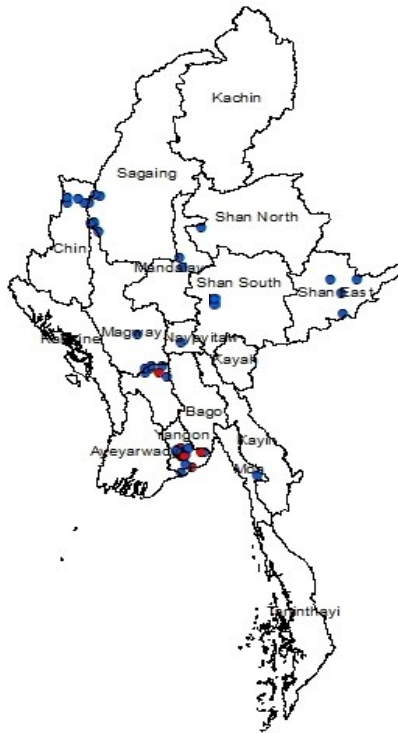
**Coronavirus Disease 2019 (COVID-19)**  
**Situation Report - 16** Data as reported by States and Regions by 10:00 PM MST 21 April 2020

**Global Situation**  
 (according to WHO situation report - 92, data as of 15:30 MST 21 April 2020)

<b>Confirmed cases</b>	<b>Deaths</b>
<b>2,397,216</b>	<b>162,956</b>

### Myanmar

Map showing COVID-19 laboratory confirmed cases

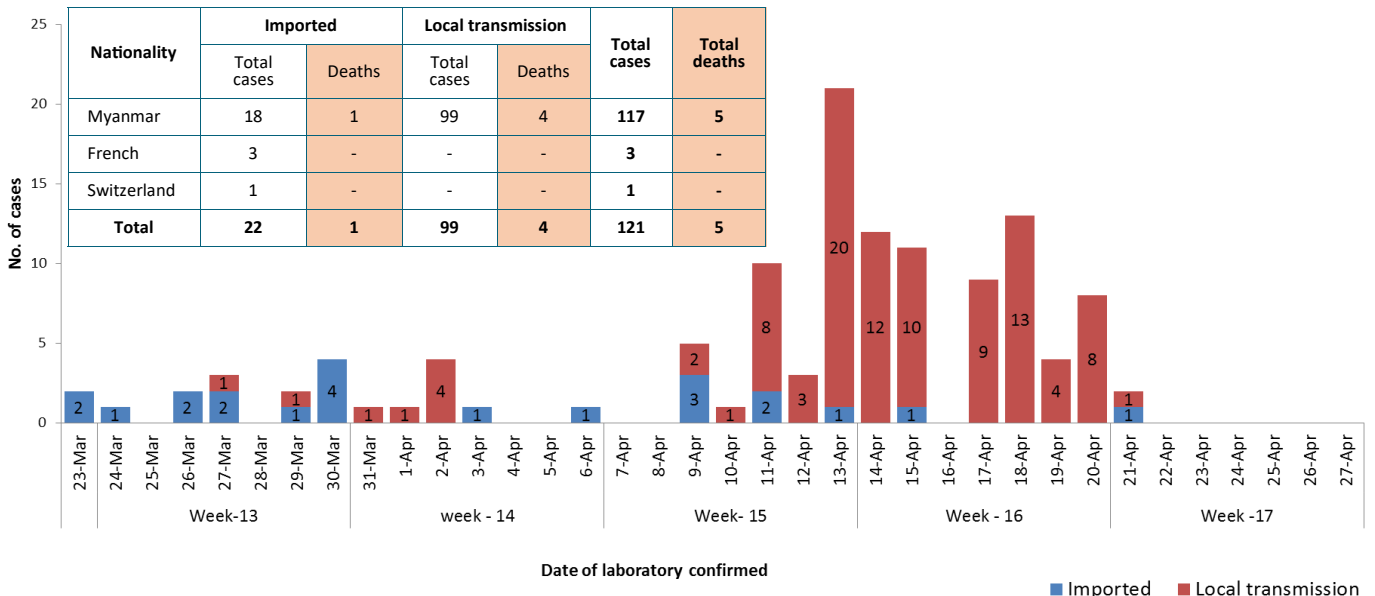


● Case  
 ● Death

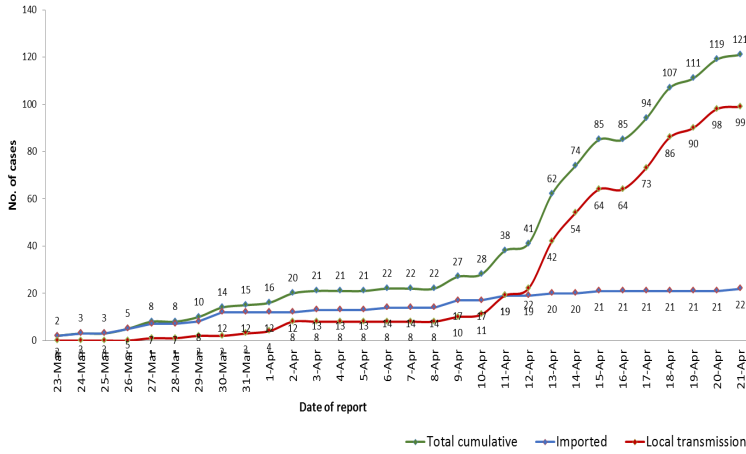
n (case) = 121  
 n (death) = 5

Total tested Specimen for COVID-19 (as of 21-4-2020,10:00 PM)				
<b>5,195</b>				
Negative		Positive		Deaths
<b>5,074</b>		<b>121</b>		<b>5</b>
No.	State/Region	COVID-19 Confirmed case	Recovered	Deaths
1.	Yangon	92 ( 1 new)	7	4
2.	Bago	7	-	1
3.	Sagaing	6	-	-
4.	Chin	5	-	-
5.	Shan(East)	3	-	-
6.	Mandalay	2	1	-
7.	Shan(South)	2 ( 1 new)	-	-
8.	Naypyitaw	1	1	-
9.	Shan(North)	1	-	-
10.	Mon	1	-	-
11.	Magway	1	-	-
12.	Kayar	-	-	-
13.	Rakhine	-	-	-
14.	Ayeyarwaddy	-	-	-
15.	Kayin	-	-	-
16.	Kachin	-	-	-
17.	Thanintharyi	-	-	-
<b>Total</b>		<b>121(2 new)</b>	<b>9</b>	<b>5</b>

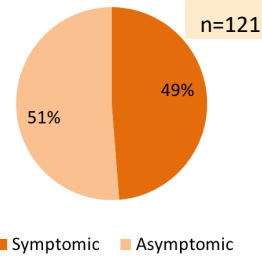
COVID-19 confirmed cases by date of laboratory confirmation (as of 21-4-2020,10:00 PM) n= 121



**Total laboratory confirmed cases by date(as of 21.4.2020, 10:00 PM)**



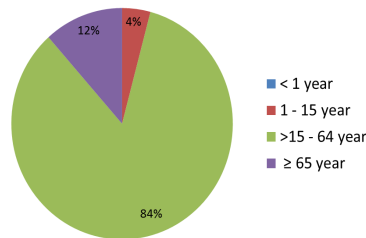
**Presentation of COVID-19 confirmed cases (as of 21.4.2020)**



SN	Type of cluster	No. of clusters	# of Cases
1	Family cluster	8	24
2	Work place cluster	3	9
3	Religious event cluster	1	63

**COVID-19 confirmed cases by age group (as of 21.4.2020),n=121**

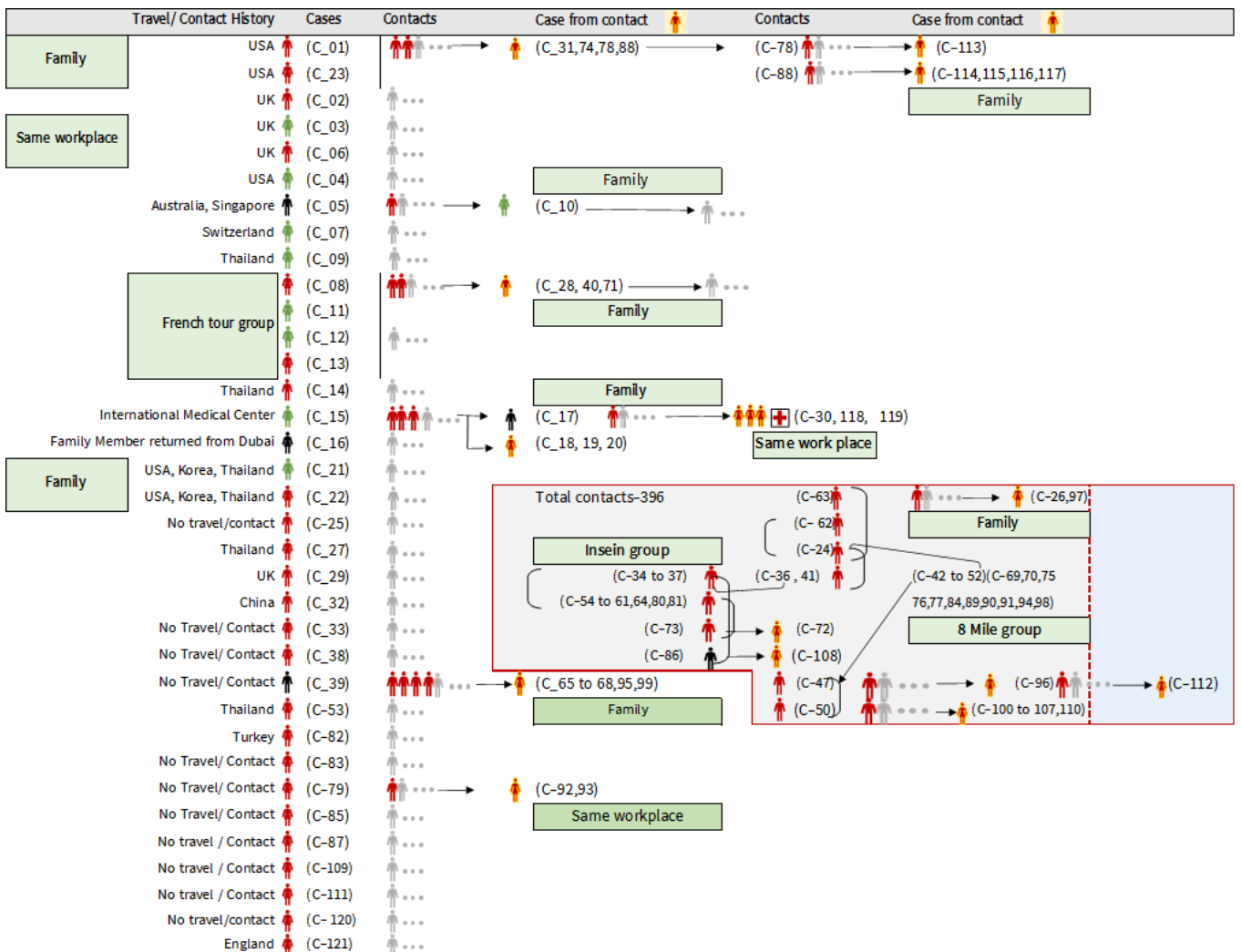
- ◆ Minimum age - 1 year 6 month
- ◆ Maximum age - 85 year
- ◆ Mean age - 41 year
- ◆ Medium age - 38 year



**COVID-19 confirmed cases among PUI and Quarantine( as of 21.4.2020)**

No.	Types of isolation and Quarantine	No. of cases
1.	PUI	55
2.	Facility Quarantine	44
3.	Home Quarantine	17
4.	Hotel Quarantine	3
5.	Hospital Quarantine	2
<b>Total</b>		<b>121</b>

**Summary of COVID-19 confirmed cases (as of 21-4-2020) ,n= 2373**



### Summary of situation (20.4.2020 – 21.4.2020)

Type	New	Total
Suspected and Person Under Investigation (PUI)	123	2,212
Hospital Quarantine	10	156
Facility Quarantine	2,044	42,238

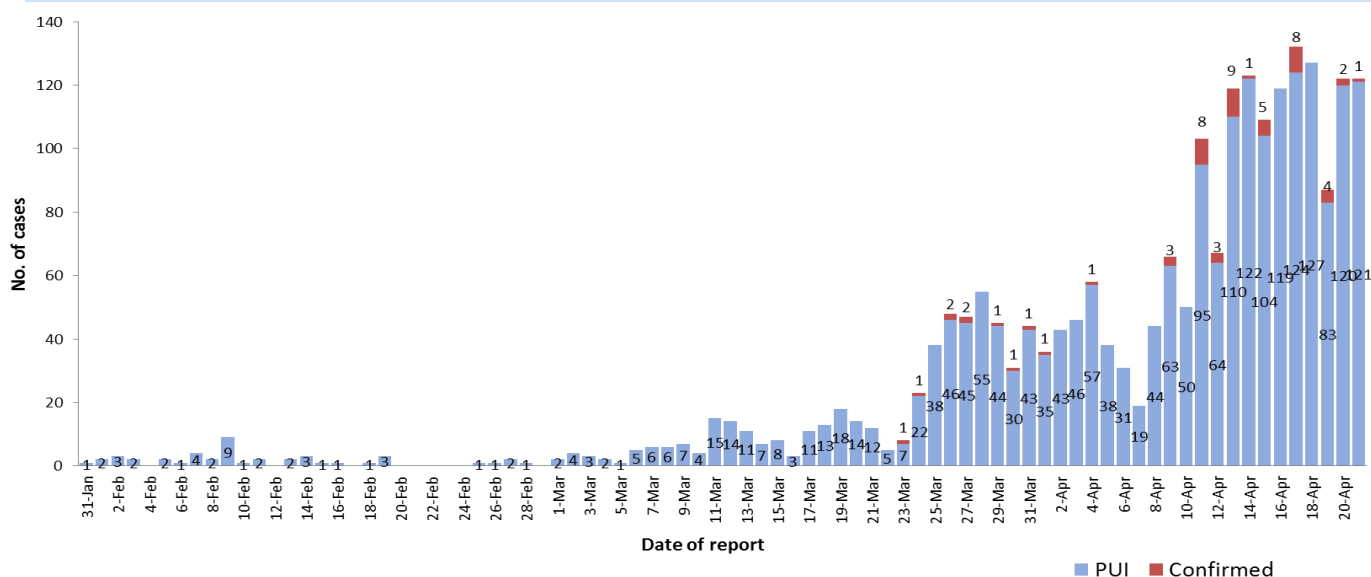
Person under Investigation (PUI) by State/Region hospitals (31.1.2020 – 21.4.2020) n=2,212

No.	State/Region	PUI
1.	Yangon	1,061
2.	Mandalay	281
3.	Bago	131
4.	Shan (N)	100
5.	Magway	87
6.	Mon	72
7.	Kayin	70
8.	Shan (E)	60
9.	Kayar	56
10.	Shan (S)	53
11.	Naypyitaw	52
12.	Ayeyarwaddy	52
13.	Sagaing	49
14.	Rakhine	33
15.	Tanintharyi	24
16.	Kachin	18
17.	Chin	13
<b>Total</b>		<b>2,212</b>

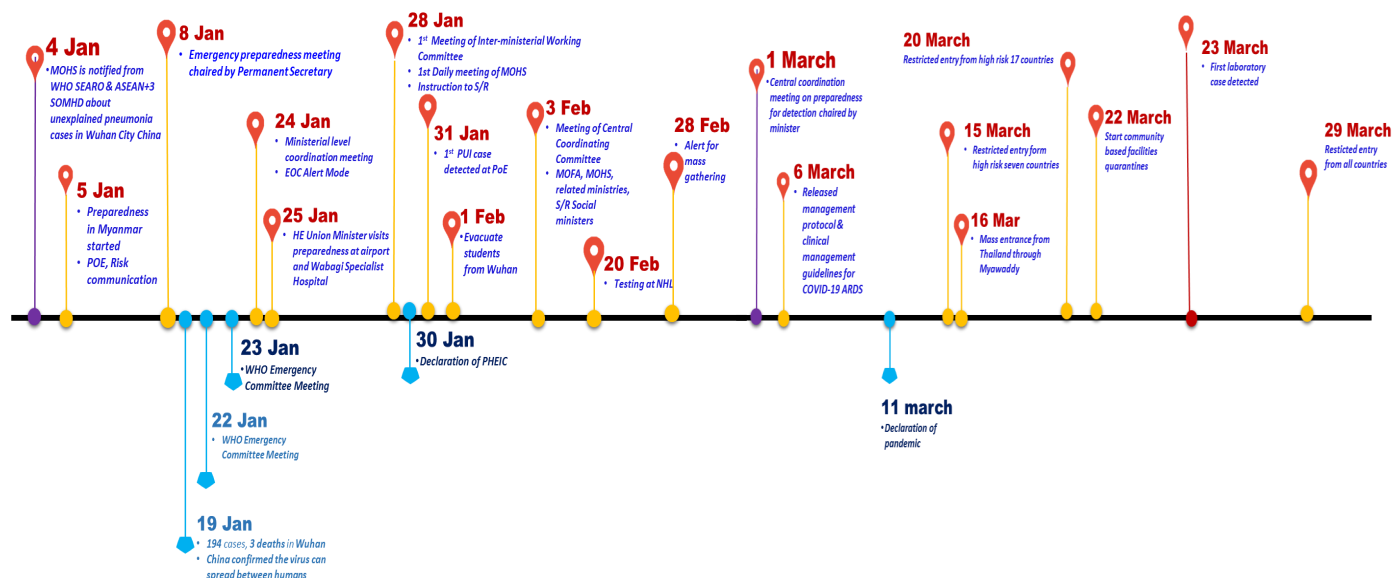
Summary of Facility Quarantine List (as of 21.4.2020)

No.	State/Region	No. of facilities	Total no. of quarantine people
1.	Magway	1,754	8,595
2.	Sagaing	1,468	7,291
3.	Kachin	421	5,404
4.	Bago	578	3,577
5.	Mandalay	705	3,403
6.	Kayin	425	3,212
7.	Shan (N)	245	2,250
8.	Mon	486	1,628
9.	Shan (S)	426	1,510
10.	Naypyitaw	3	1,018
11.	Rakhine	165	1,087
12.	Shan (E)	41	896
13.	Ayeyarwaddy	240	825
14.	Yangon	22	781
15.	Tanintharyi	228	578
16.	Kayah	18	152
17.	Chin	33	133
<b>Total</b>		<b>7,258</b>	<b>42,340</b>

COVID-19 laboratory confirmed cases among PUI (31.1.2020-21.4.2020), n( PUI)= 2212, n( confirmed)=55



## Preparedness and Response to COVID-19 in Myanmar



### Summary of COVID-19 situation in Myanmar (as of 21 April 2020)

- ⇒ Among the total COVID-19 tested number of (5,195) up to 21<sup>st</sup> April 2020, positivity rate comes out to be 2.3% (i.e.121 in absolute number).
- ⇒ On analysis of the 121 laboratory confirmed cases –
  - ◆ 42% (50 in no.) were those patients under investigation (PUI) at the respective hospitals in States & Regions
  - ◆ 71% (86 in no.) were found out from the contact tracing
  - ◆ 5% (6 in no.) were the returnees under facility quarantine
- ⇒ When analyzing the symptoms of the confirmed cases at the time of reporting–
  - ◆ 47% (56 in no.) were found to be symptomatic
  - ◆ 51% (61 in no.) were found to be asymptomatic
  - ◆ 2% (2 in no.) were found to be pre-symptomatic
- ⇒ Person Under Investigation (PUI) cases at State/ Regional Hospitals (31-1-2020) to (21-4-2020)
  - ◆ Total - 2,212
  - ◆ Highest in Yangon (1,061) and followed by Mandalay (281) and Bago (131)
- ⇒ There were a total of 7,258 quarantine facilities and 42,340 people were under quarantine across the countries.
- ⇒ There were 15 cases from contacts of returnees (12 % of total confirmed cases)