



Ministry of Health and Sports (Myanmar)

Department of Public Health

Central Epidemiology Unit

(2 July 2020)

Coronavirus Disease 2019 (COVID-19)

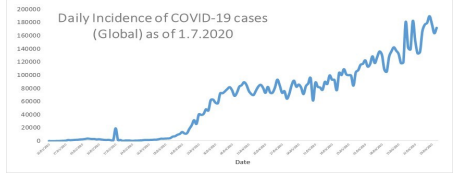
Situation Report - 86

Data as reported by States and Regions by 10:00 PM MST 1 July 2020

Global Situation
(WHO situation report - 163)
data as of 14:30 MST 1 July 2020

Confirmed cases
10,357,662

Deaths
508,055
Case Fatality Rate
4.9 %



Myanmar Situation

Total tested
79,072

Confirmed cases
304

Negative
78,768

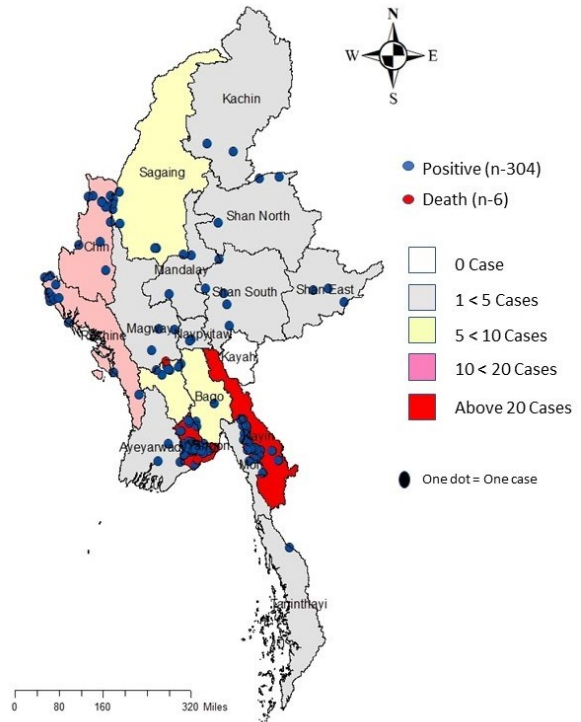
Recovered
223
73.3 % of confirmed cases

Active
75
24.6% of confirmed cases

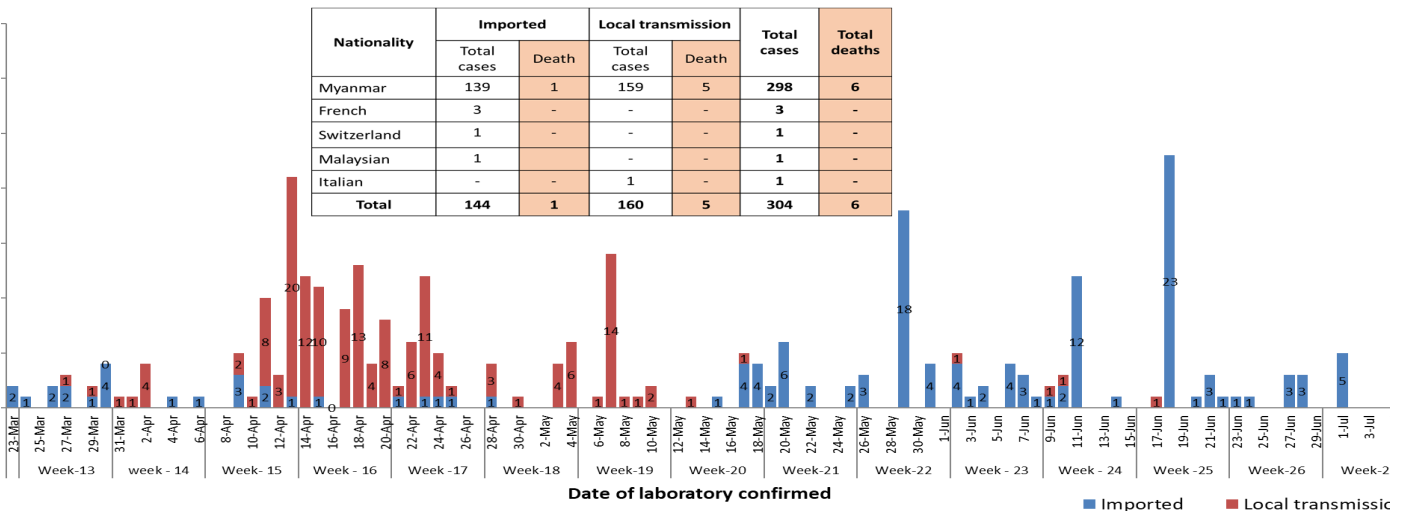
Death
6
1.9% of confirmed cases

No.	State/Region	COVID-19 Confirmed case	Recovered	Deaths
1	Yangon	213 (4 New)	168(1 New)	5
2	Kayin	26	2	-
3	Rakhine	12	4	-
4	Chin	10	9	-
5	Sagaing	9	8	-
6	Bago	9(1 New)	7	1
7	Shan(South)	4	4	-
8	Mandalay	3	3	-
9	Shan(East)	3	4	-
10	Shan(North)	3	2	-
11	Magway	3	3	-
12	Naypyitaw	2	2	-
13	Ayeyarwaddy	2	2	-
14	Kachin	2	2	-
15	Mon	2	1	-
16	Thanintharyi	1	1	-
17	Kayah	-	-	-
Total		304(5 New)	223(1 New)	6

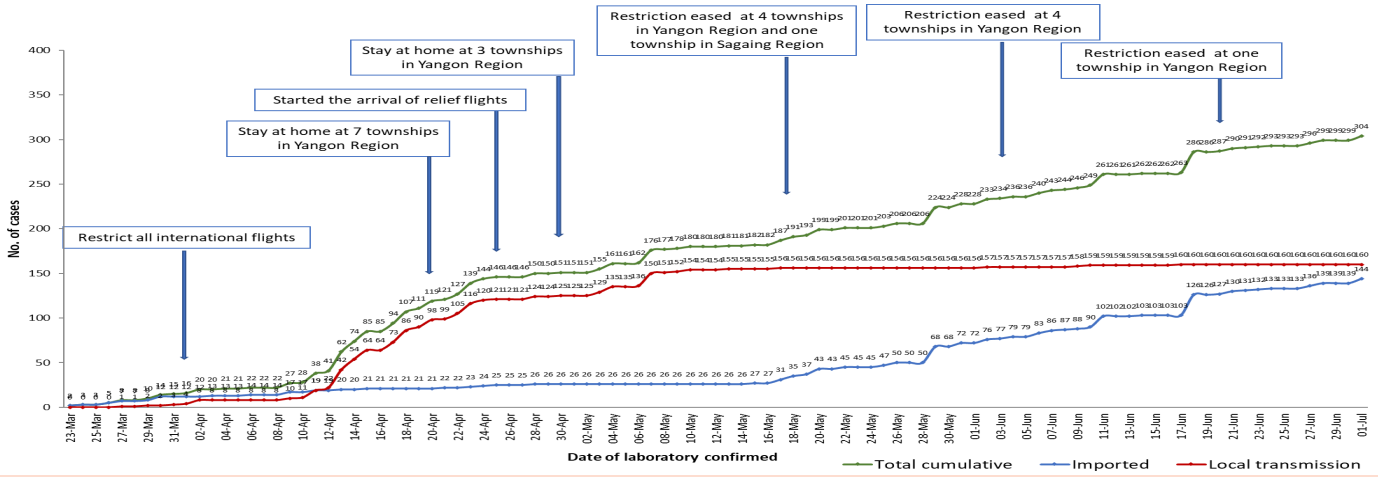
Map showing COVID-19 laboratory confirmed cases



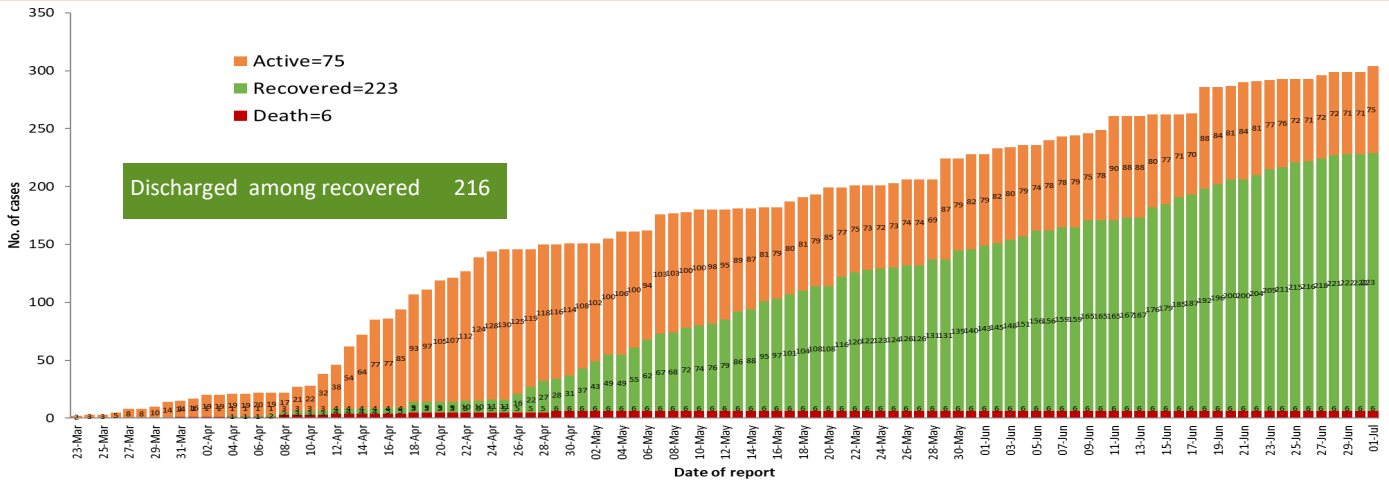
COVID-19 confirmed cases by types of transmissions (as of 1.7.2020, 10:00 pm) n=304



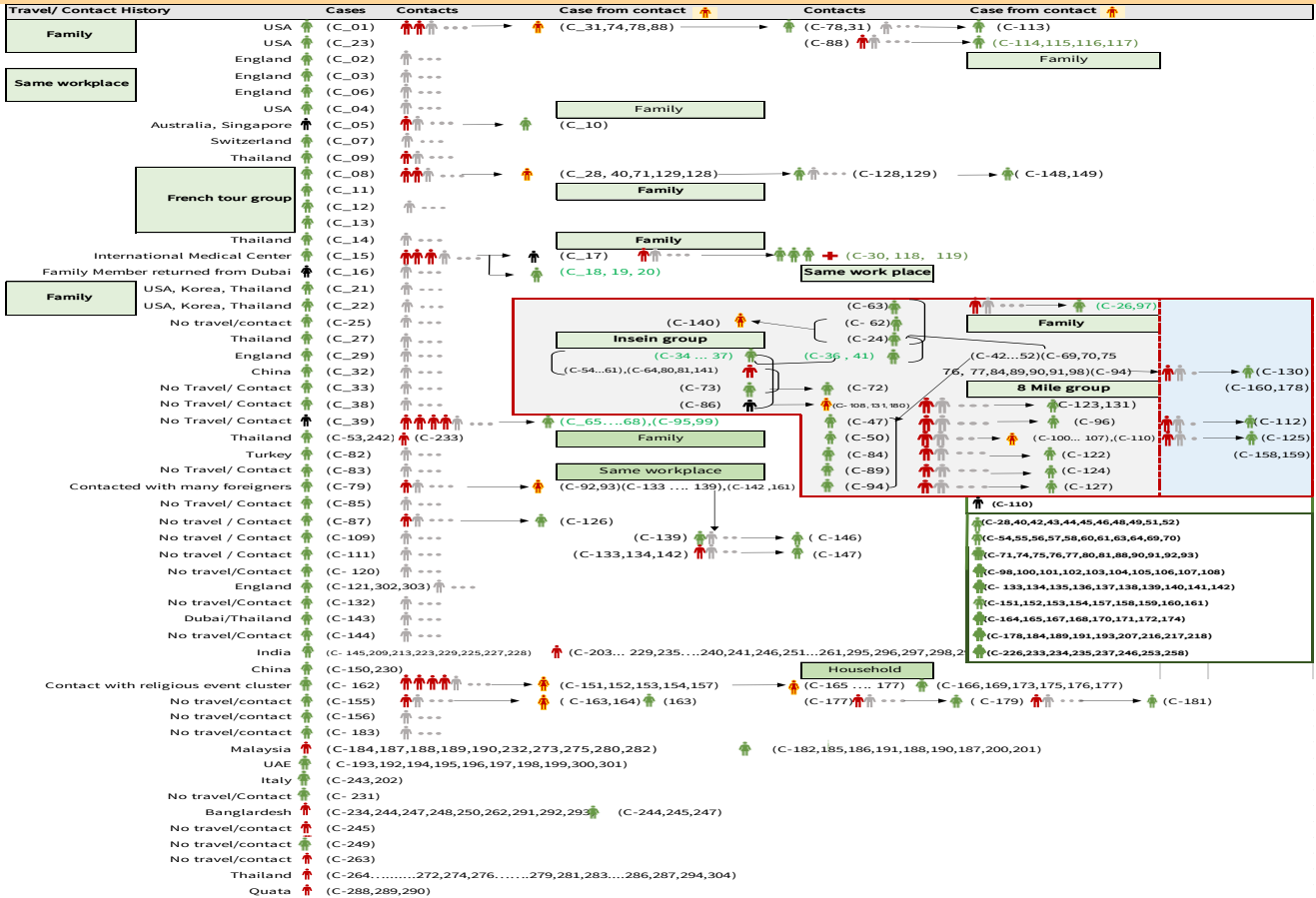
Total laboratory confirmed cases by date (as of 1.7.2020, 10:00 pm), n= 304



Cumulative Number of active confirmed cases, recovered and deaths (23.3.2020 – 1.7.2020), n (cumulative)=304



Summary of COVID-19 confirmed cases (as of 1.7.2020), n (contacts)= 5,624



Summary of current situation

Type	New (30.6.2020-1.7.2020)	Total (on 1.7.2020)
Suspected and Person Under Investigation (PUI)	44	236
Hospital Quarantine	15	57
Facility Quarantine	959	25,413

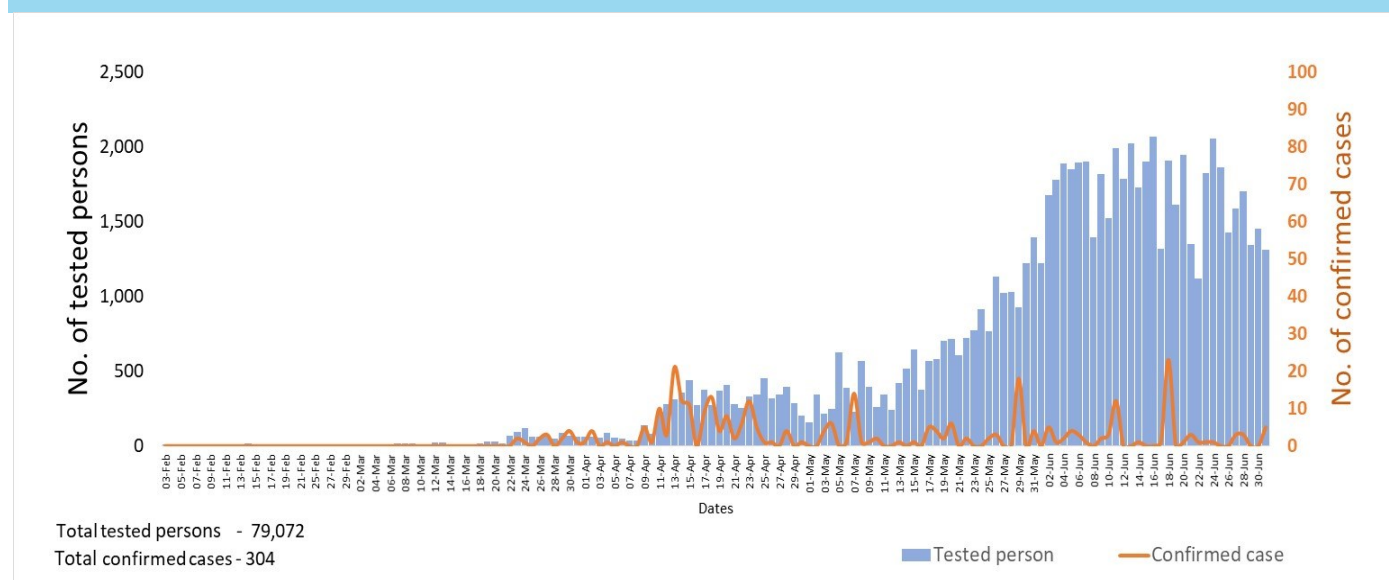
Person under Investigation (PUI) by State/Region hospitals (31.1.2020 – 1.7.2020) n= 6,037

No. of Facility Quarantine sites and Quarantined people on 1.7.2020

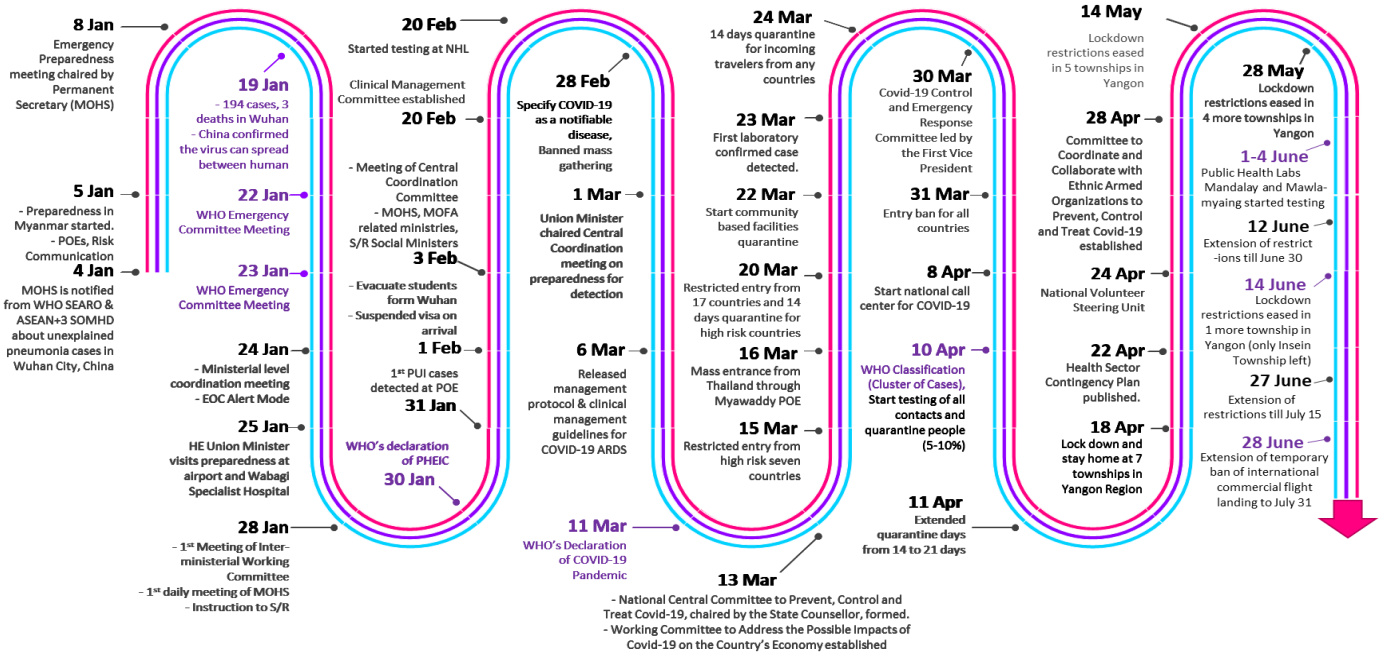
No.	State/Region	PUI
1.	Yangon	3,077
2.	Mandalay	1,184
3.	Kayin	237
4.	Mon	227
5.	Shan(N)	203
6.	Magway	200
7.	Bago	180
8.	Shan(E)	115
9.	Ayeyarwaddy	102
10.	Shan(S)	98
11.	Sagaing	88
12.	Kayah	76
13.	Rakhine	67
14.	Naypyitaw	63
15.	Thanintharyi	60
16.	Kachin	34
17.	Chin	26
Total		6,037

No.	State/Region	No. of facilities	Total no. of quarantine
1.	Yangon	81	3,858
2.	Magway	2,625	3,612
3.	Bago	301	3,104
4.	Kayin	557	2,665
5.	Mon	273	2,357
6.	Kachin	413	1,797
7.	Mandalay	118	1,512
8.	Sagaing	969	1,299
9.	Rakhine	338	1,243
10.	Tanintharyi	189	1,078
11.	Shan South	127	903
12.	Ayeyarwaddy	199	871
13.	Naypyitaw	5	543
14.	Shan North	242	259
15.	Chin	25	147
16.	Kayah	18	129
17.	Shan East	11	36
Total		6,491	25,413

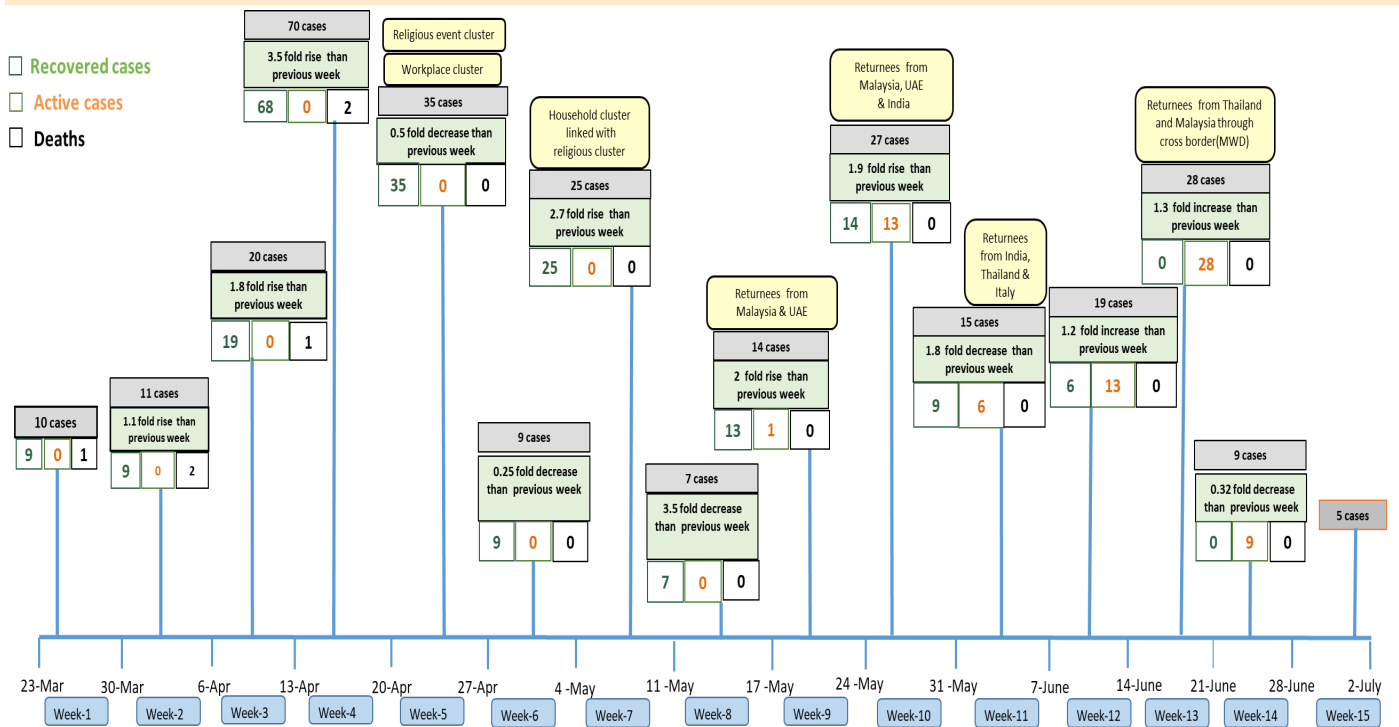
COVID-19 confirmed cases among tested by date (as of 1.7.2020)



Timeline of Preparedness and Response to COVID-19 in Myanmar (as of 1.7.2020)



Summary of new confirmed cases detection after first two cases (as of 1.7.2020)



- Confirmed cases were detected as a peak in the 4th week after first confirmed cases due to the religious event cluster.
- Confirmed cases were decreased but still raised than the first 3 weeks due to the religious event cluster and workplace cluster.
- There were an increased in numbers of cases in the 7th week after the first two cases due to the household cluster linked with a religious cluster.
- Confirmed cases were detected by a nearly two-fold rise in the 9th and 10th weeks after the first two cases because of returnees coming back by relief flights.