



Ministry of Health and Sports (Myanmar)

Department of Public Health

Central Epidemiology Unit

(4 May 2020)

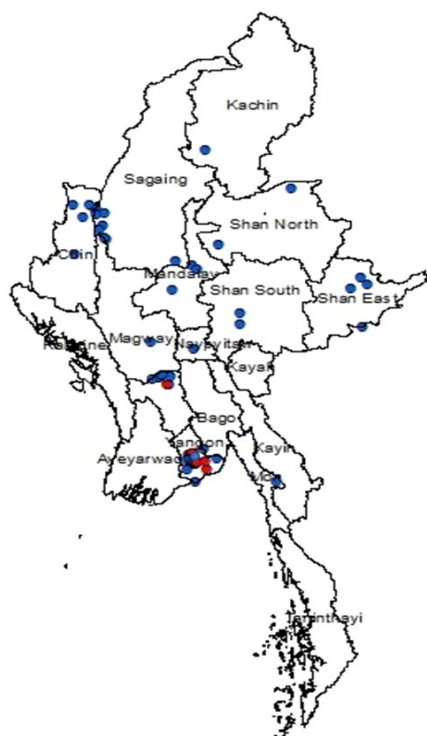
Coronavirus Disease 2019 (COVID-19)
Situation Report - 27 Data as reported by States and Regions by 24:00 MST 3 May 2020

Global Situation
 (according to WHO situation report - 104, data as of 14:30 MST 3 May 2020)

Confirmed cases	Deaths
3,349,786	238,628

Myanmar

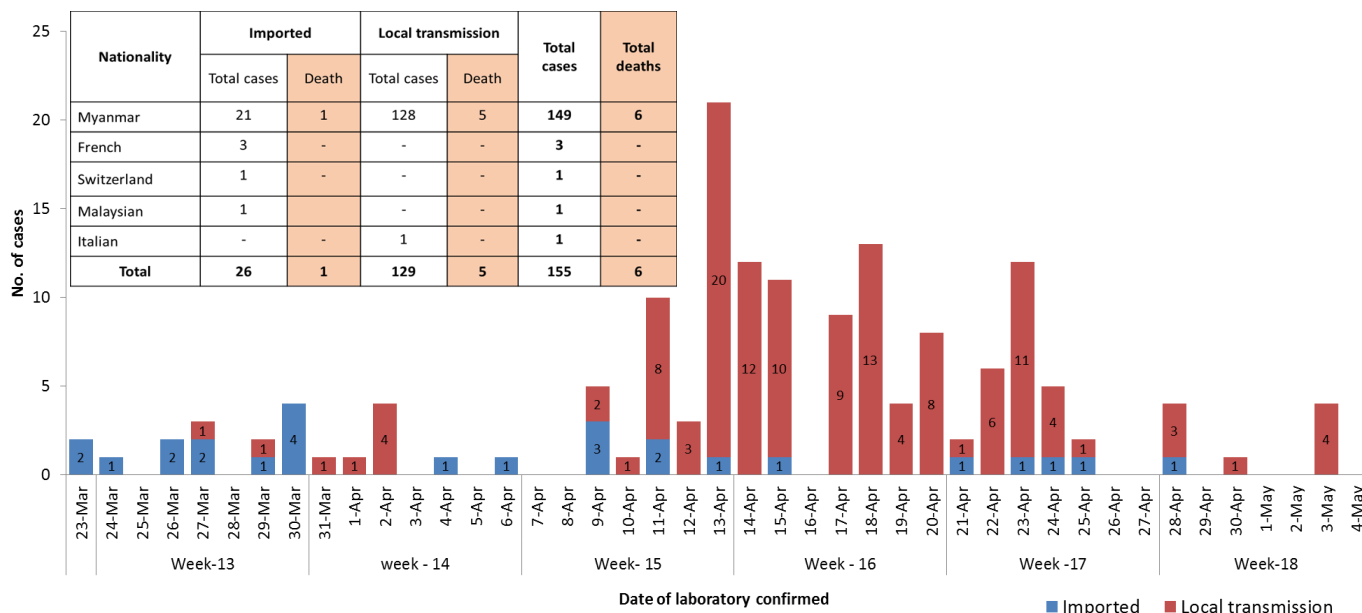
Map showing COVID-19 laboratory confirmed cases



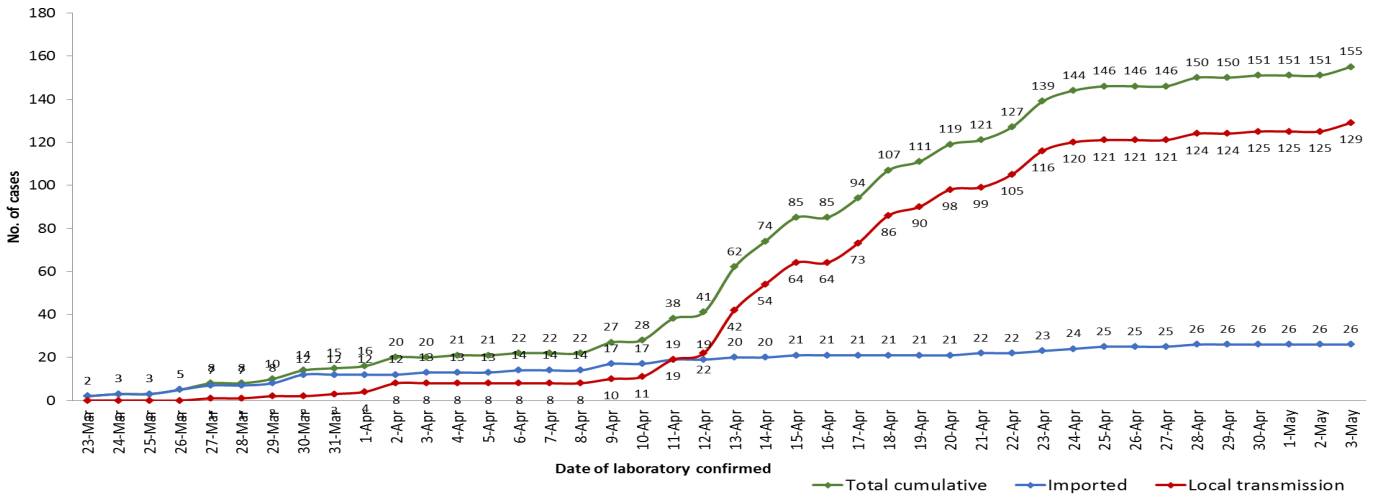
● Case
 ● Death
 n (case) = 155
 n (death) = 6

Total tested Specimen for COVID-19 (as of 3-5-2020, 24:00)				
8,794				
Negative		Positive		Deaths
8,639		155		6
No.	State/Region	COVID-19 Confirmed case	Recovered	Deaths
1.	Yangon	121 (4 new)	39(6 new)	5
2.	Bago	7	3	1
3.	Sagaing	7	-	-
4.	Chin	6	1	-
5.	Shan(East)	3	1	-
6.	Mandalay	3	1	-
7.	Shan(South)	2	1	-
8.	Shan(North)	2	-	-
9.	Naypyitaw	1	1	-
10.	Mon	1	1	-
11.	Magway	1	1	-
12.	Kachin	1	-	-
13.	Kayar	-	-	-
14.	Rakhine	-	-	-
15.	Ayeyarwaddy	-	-	-
16.	Kayin	-	-	-
17.	Thanintharyi	-	-	-
Total		155 (4 new)	49 (6 new)	6

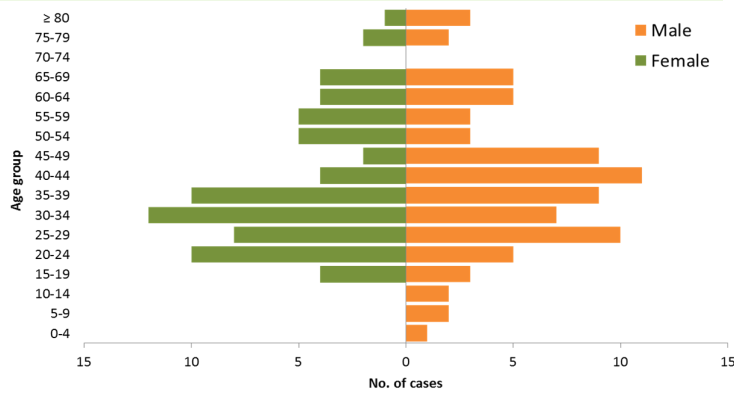
COVID-19 confirmed cases by date of laboratory confirmation (as of 3-5-2020,24:00) n= 155



Total laboratory confirmed cases by date (as of 3.5.2020, 24:00)



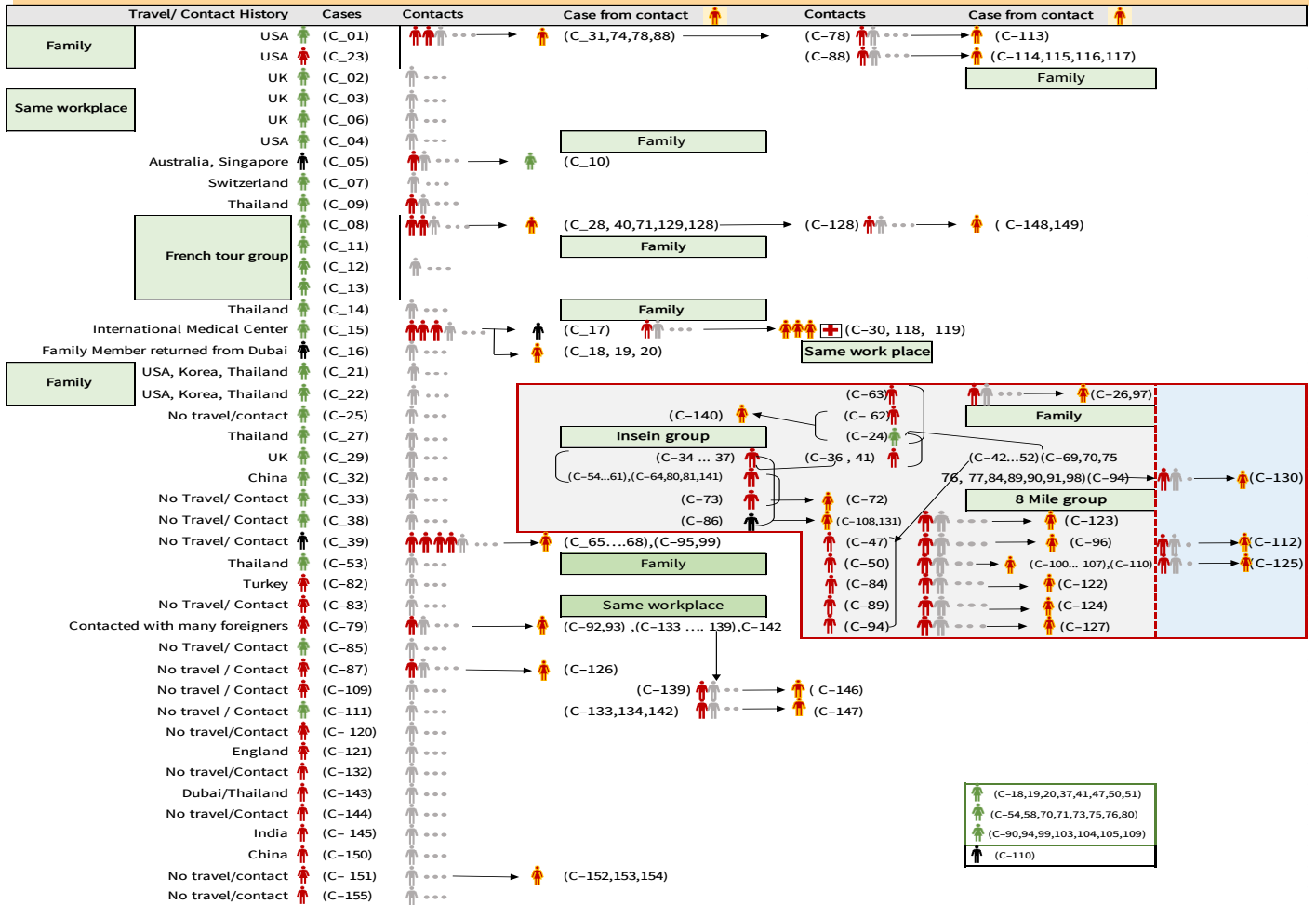
COVID-19 confirmed cases by age group (as of 3.5.2020), n= 155



SN	Type of cluster	No. of clusters	# of Cases
1	Religious event cluster	1	67
2	Family cluster	8	37
3	Work place cluster	3	24

- ◆ Minimum age - 1 year 6 month
- ◆ Maximum age - 87 year

Summary of COVID-19 confirmed cases (as of 3-5-2020) ,n= 3517



Summary of situation (2.5.2020–3.5.2020)

Type	New	Total (as of 3. 5.2020)
Suspected and Person Under Investigation (PUI)	72	3,299
Hospital Quarantine	8	118
Facility Quarantine	2,355	44,060

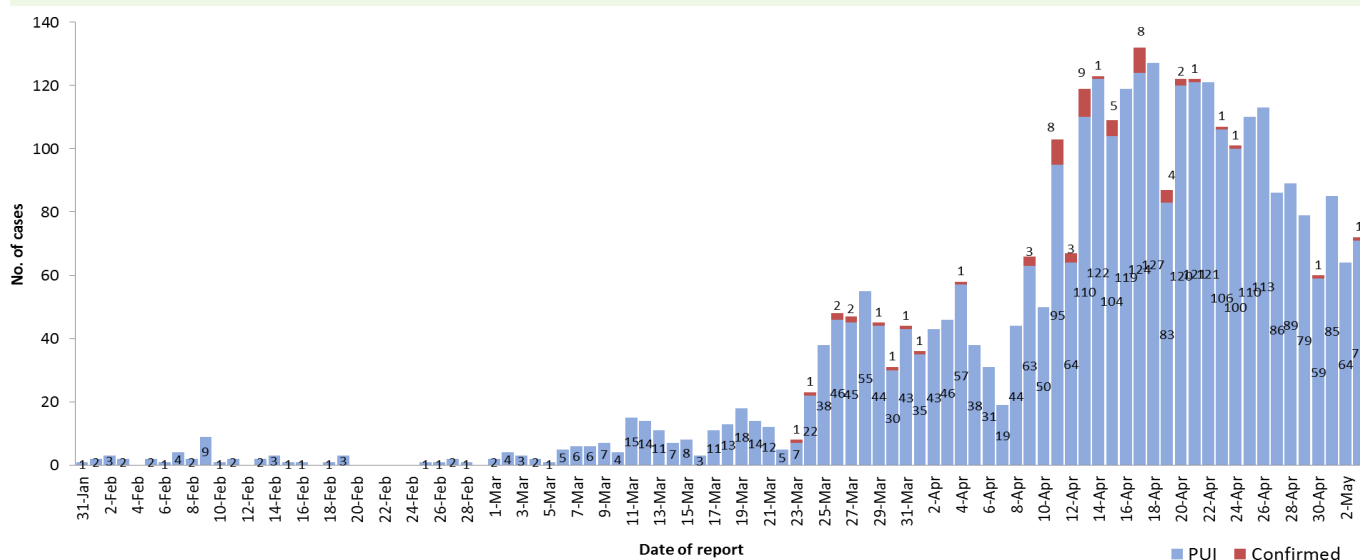
Person under Investigation (PUI) by State/Region hospitals (31.1.2020 – 3.5.2020) n= 3,299

No.	State/Region	PUI
1.	Yangon	1,608
2.	Mandalay	559
3.	Bago	155
4.	Shan (N)	134
5.	Magway	117
6.	Kayin	111
7.	Mon	109
8.	Ayeyarwaddy	77
9.	Shan (E)	72
10.	Shan (S)	67
11.	Sagaing	62
12.	Kayah	58
13.	Naypyitaw	57
14.	Rakhine	40
15.	Tanintharyi	36
16.	Kachin	23
17.	Chin	14
Total		3,299

Summary of Facility Quarantine List (as of 3.5.2020)

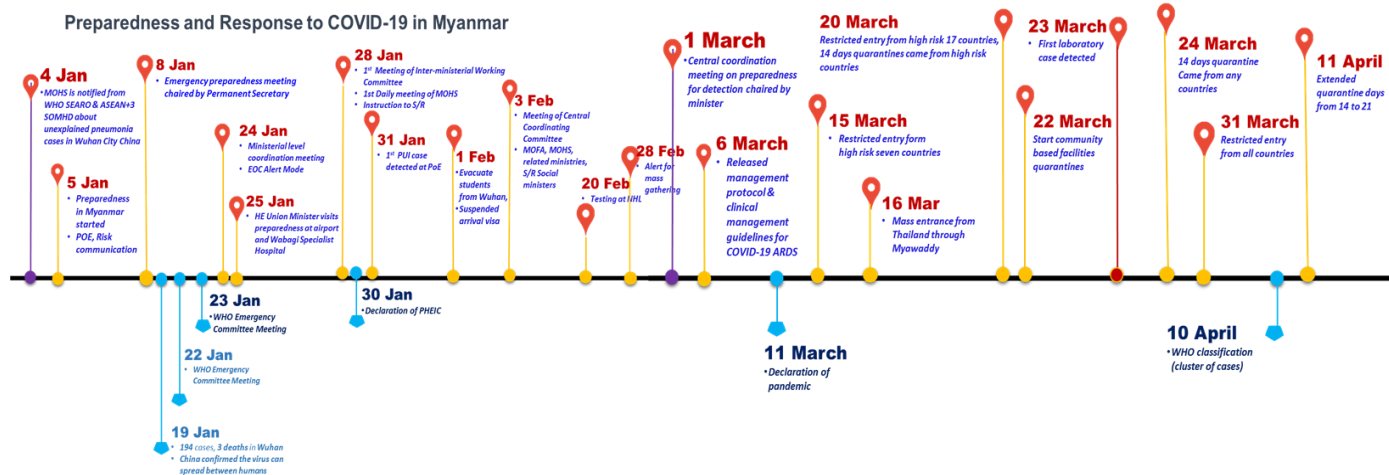
No.	State/Region	No. of facilities	Total no. of quarantine people
1.	Sagaing	2,011	9,039
2.	Magway	2,306	6,778
3.	Kachin	524	5,954
4.	Ayeyarwaddy	1,063	4,885
5.	Mandalay	794	4,840
6.	Bago	421	2,451
7.	Shan (N)	311	2,371
8.	Rakhine	227	2,204
9.	Naypyitaw	19	1,339
10.	Yangon	43	1,144
11.	Tanintharyi	134	743
12.	Shan(S)	110	702
13.	Shan (E)	39	495
14.	Chin	25	294
15.	Kayah	18	275
16.	Kayin	366	275
17.	Mon	22	271
Total		8,433	44,060

COVID-19 laboratory confirmed cases among PUI by date of report(31.1.2020-3.5.2020),n(PUI)= 3,299, n (confirmed)=59



Preparedness and Response to COVID-19 in Myanmar

Preparedness and Response to COVID-19 in Myanmar



Summary of COVID-19 cases (as of 3.5.2020)

- ◆ The first two COVID-19 laboratory confirmed cases were detected on 23 March, 2020.
- ◆ The highest number of cases were found in week-16 (2nd week of April) i.e. about 3 week after first cases and 43% of cases are linked with religious event cluster.
- ◆ Numbers of COVID-19 confirmed cases were dramatically decreased at the end of April 2020 about 87% decreased in number in week-18 compared to week-16.

The possible reasons for this dramatic decreasing are-

- Rapid containment procedure of confirmed cases, Intensified contact tracing and quarantine procedure of those contacts interrupt transmission chain.
- Because of the restriction of all international flights since 30 March 2020, the number of Imported confirmed cases become less in number.
- Asymptomatic and mild cases in the community have not attended to the public hospitals and health facilities and because of this; those cases cannot be tested.
- Currently, not all of the suspected cases, contacts and quarantine people are not tested.
- Stay at home and social distancing are good practice to reduce and interrupt the disease transmission chain.
- Active community participation is crucial in COVID-19 control.
- ◆ Recovered = 49 (one-third of cases)

Hotline Number— 0673420268