



# Ministry of Health and Sports (Myanmar)

## Department of Public Health

### Central Epidemiology Unit

(1 October 2020)

#### Coronavirus Disease 2019 (COVID-19)

Situation Report - 177

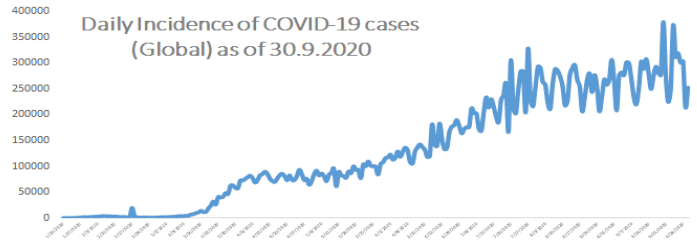
Data as reported by States and Regions by 30 September 2020

WHO Coronavirus Disease (COVID-19) Dashboard data as of 4:28 PM CEST 30 September 2020

**Confirmed cases**  
**33,502,430**

**Deaths**  
**1004,421**

**Case Fatality Rate**  
**3%**



#### Myanmar Situation

**Total Tested**  
**267,294**

**Confirmed Cases**  
**13,373**

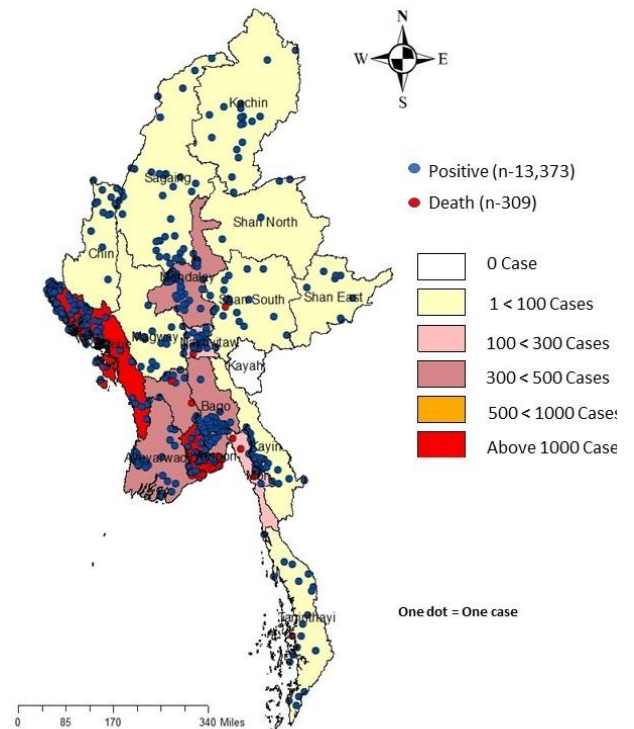
**Negative**  
**253,921**

**Discharged**  
**3,755**  
28.1% of Confirmed cases

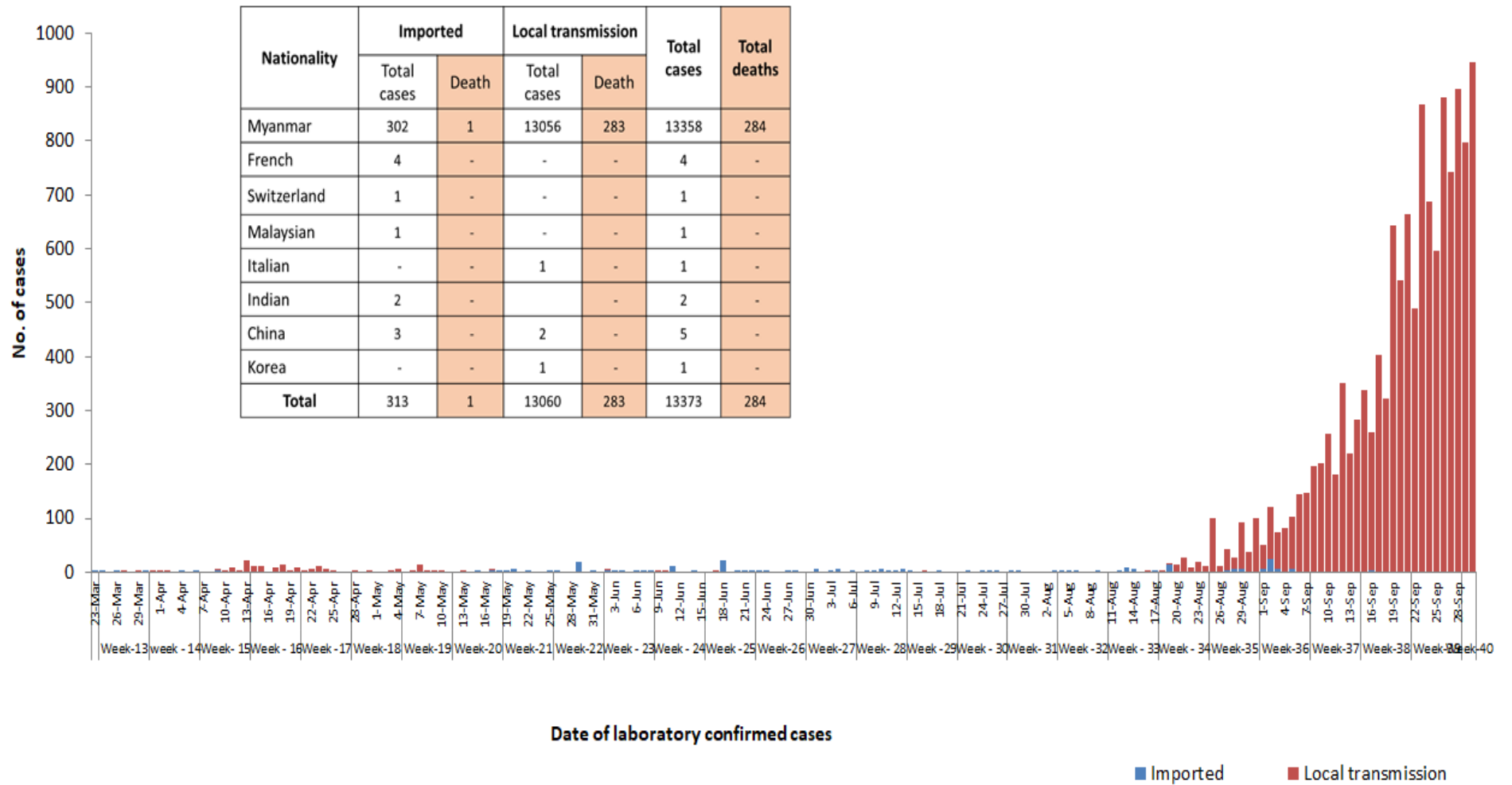
**Death**  
**309**  
2.3% of Confirmed cases

No	State/Region	COVID-19 Confirmed case	New confirmed cases within 24 hours	Deaths
1	Yangon	10,085	796	291
2	Rakhine	1,568	24	3
3	Bago	386	20	3
4	Ayeyarwaddy	310	61	-
5	Mandalay	303	7	1
6	Mon	274	2	6
7	Naypyitaw	131	1	3
8	Sagaing	77	19	-
9	Kachin	50	6	-
10	Kayin	45	1	-
11	Magway	43	-	-
12	Chin	38	-	-
13	Thanintharyi	32	5	1
14	Shan (South)	20	3	1
15	Shan (East)	6	-	-
16	Shan (North)	5	1	-
17	Kayah	-	-	-
<b>Total</b>		<b>13,373</b>	<b>946</b>	<b>309</b>

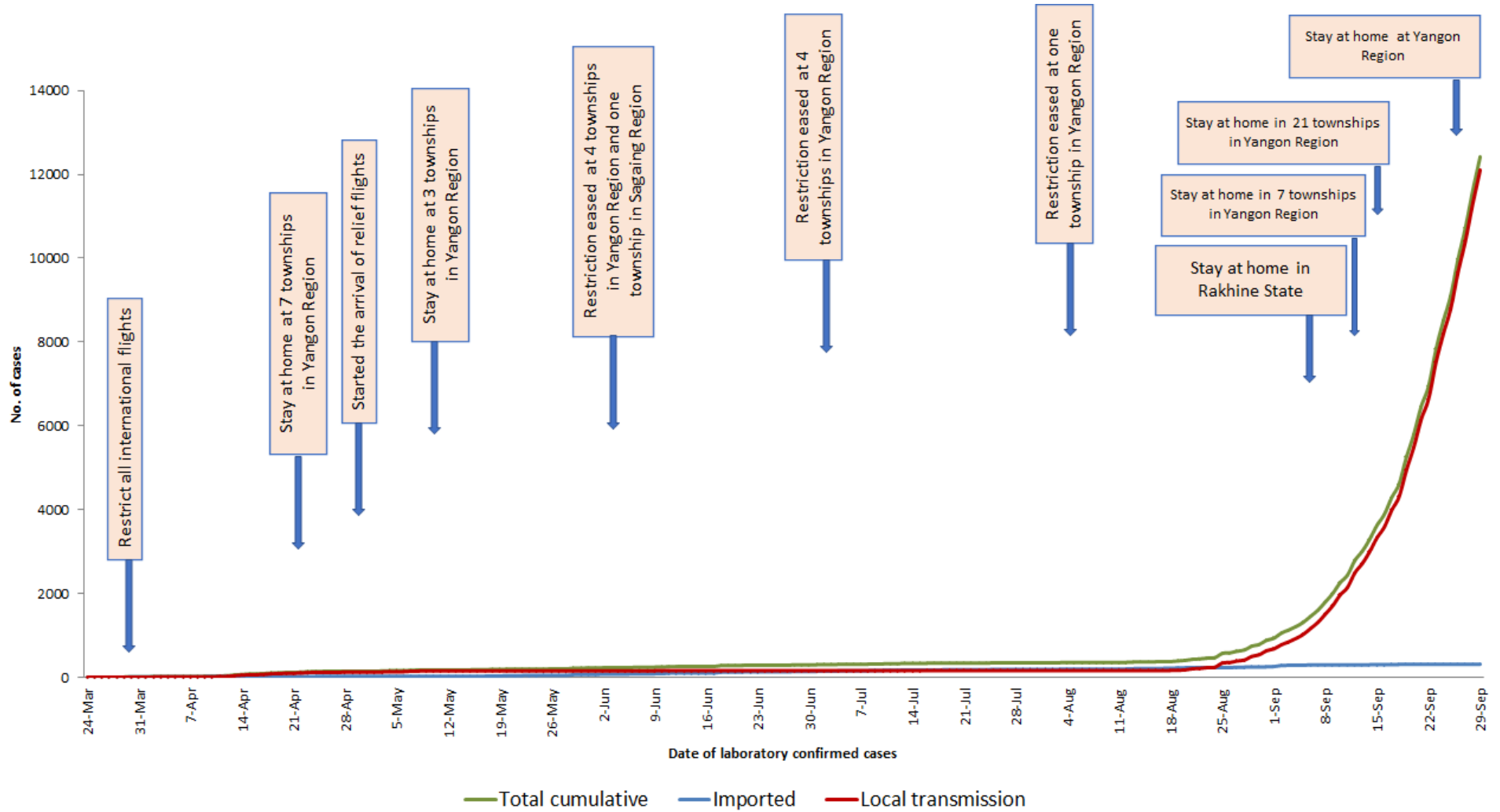
Map showing COVID-19 laboratory confirmed cases



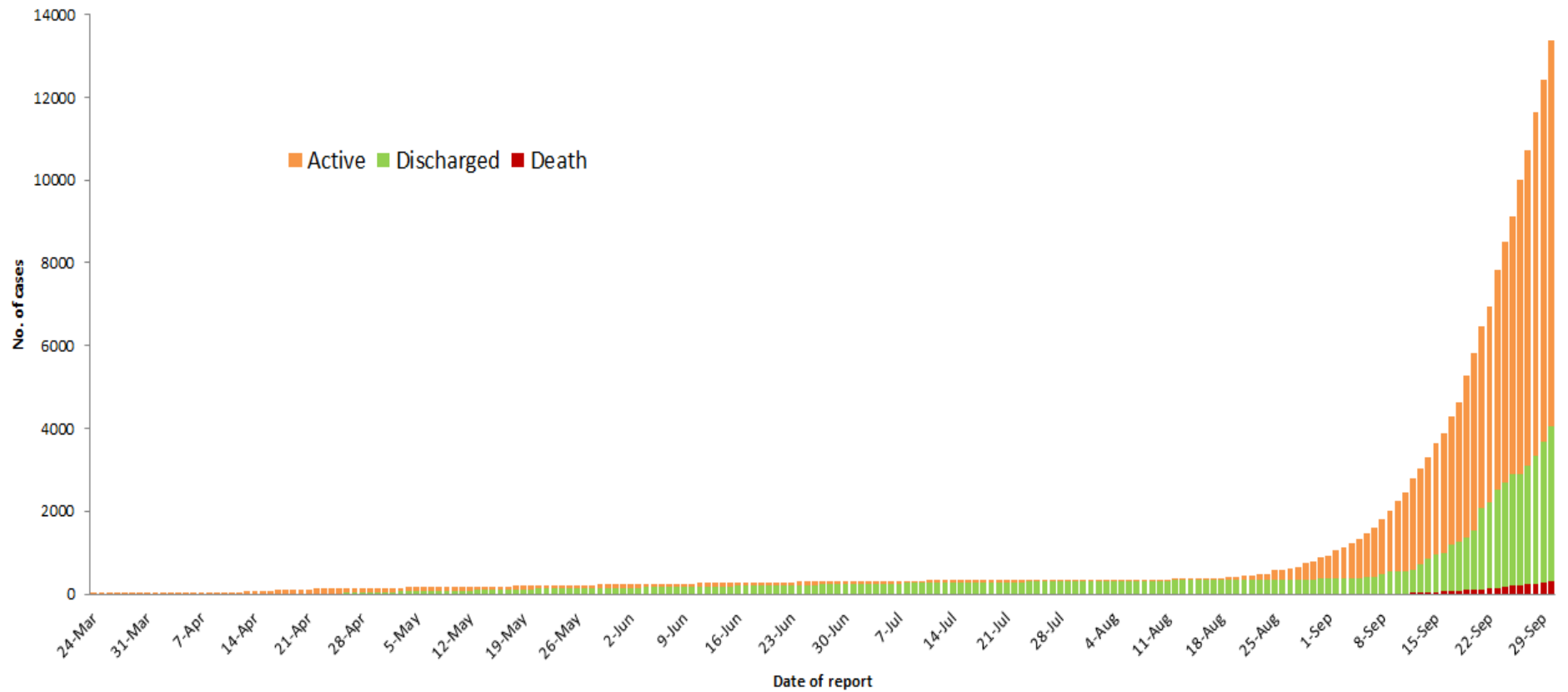
## COVID-19 confirmed cases by types of transmissions (as of 30.9.2020) n=13,373



# Total laboratory confirmed cases by date (as of 30.9.2020), n= 13,373



**Cumulative Number of active confirmed cases, recovered and deaths (23.3.2020 – 30.9.2020), n (cumulative)=13,373**



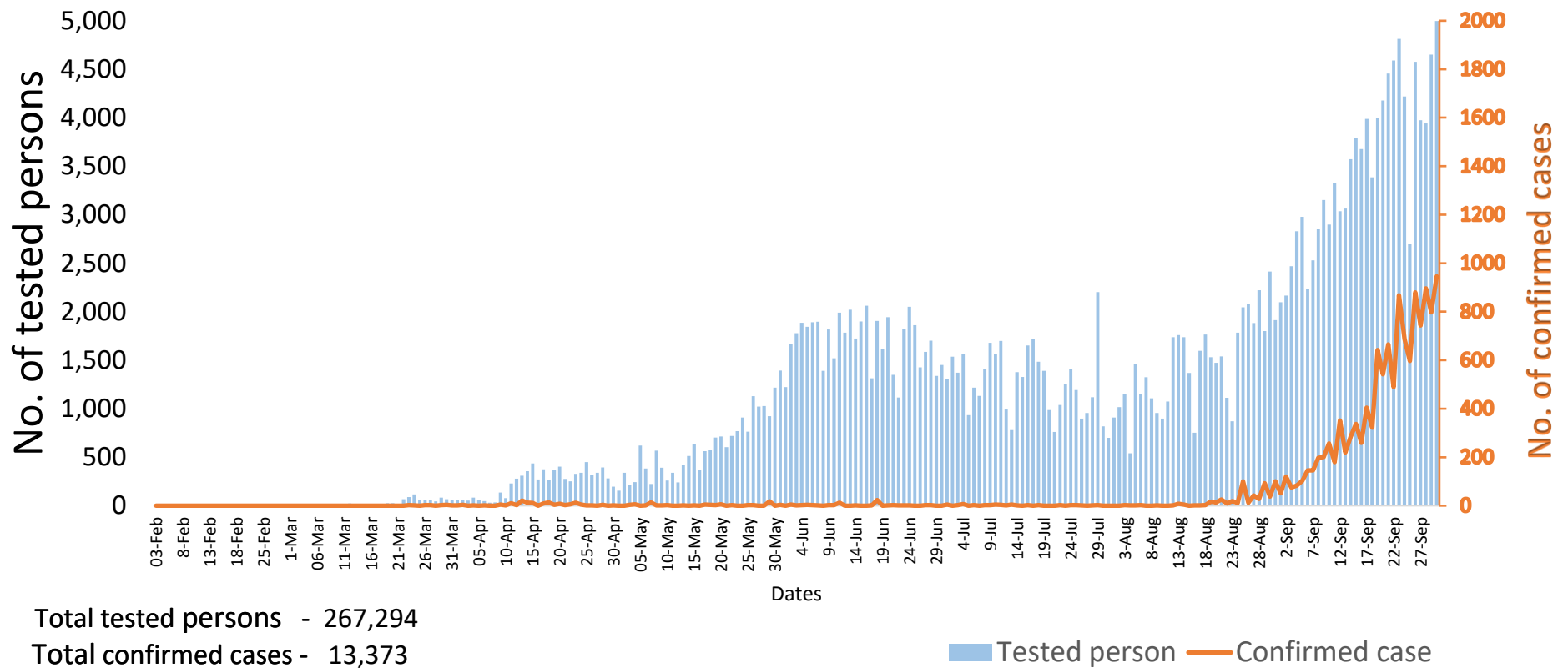
Summary of current situation		
Type	New (29.9.2020-30.9.2020)	Total (on 30.9.2020)
<b>Suspected and Person Under Investigation (PUI)</b>	<b>405</b>	<b>1461</b>
<b>Hospital Quarantine</b>	<b>71</b>	<b>377</b>
<b>Facility Quarantine</b>	<b>2,516</b>	<b>44,517</b>

Person under Investigation (PUI) by State/Region hospitals (31.1.2020 – 30.9.2020) n= 16,158	No. of Facility Quarantine sites and Quarantined people on 30.9.2020
----------------------------------------------------------------------------------------------	----------------------------------------------------------------------

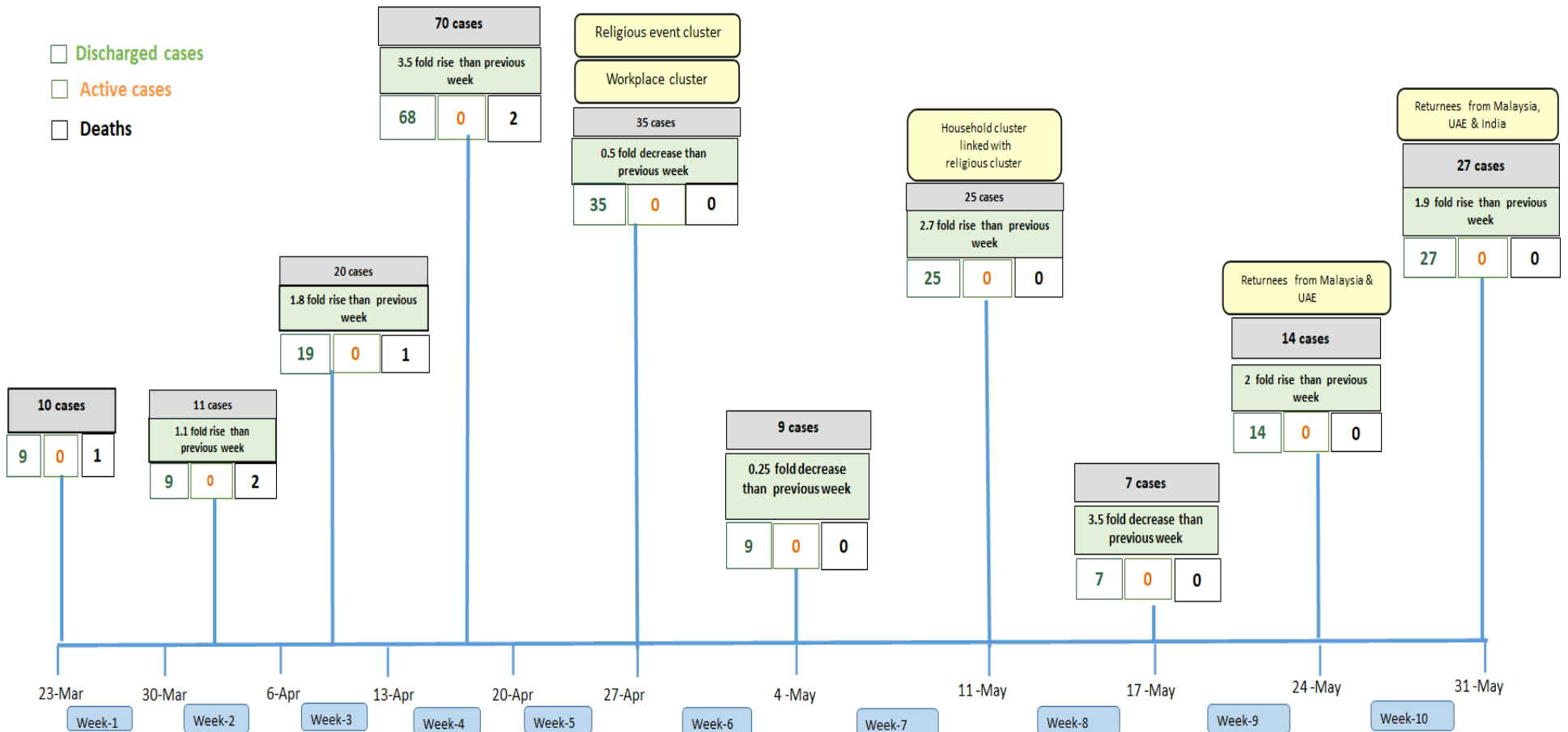
No.	State/Region	PUI	No.	State/Region	No. of facilities	Total no. of quarantine
1	Yangon	10112	1	Bago	1085	8781
2	Mandalay	2359	2	Ayeyarwaddy	1143	6262
3	Mon	653	3	Yangon	85	4618
4	Kayin	473	4	Magway	632	4589
5	Magway	401	5	Sagaing	665	4270
6	Rakhine	338	6	Mon	108	2820
7	Shan (N)	332	7	Mandalay	372	2754
8	Bago	328	8	Kachin	249	2480
9	Ayeyarwaddy	293	9	Kayin	385	2114
10	Shan (S)	145	10	Rakhine	304	1647
11	Thanintharyi	143	11	Shan South	117	1146
12	Shan (E)	139	12	Tanintharyi	153	1030
13	Sagaing	128	13	Naypyitaw	13	734
14	Naypyitaw	100	14	Shan North	319	477
15	Kayah	87	15	Kayah	12	369
16	Kachin	77	16	Chin	25	311
17	Chin	50	17	Shan East	19	115
<b>Total</b>		16,158	<b>Total</b>		5,686	44,517

\*Facility quarantine rule changed from 21 days to 14 days on 11-9-2020 while 7 days home quarantine rule remain unchanged.

## COVID-19 confirmed cases among tested by date (as of 30.9.2020)

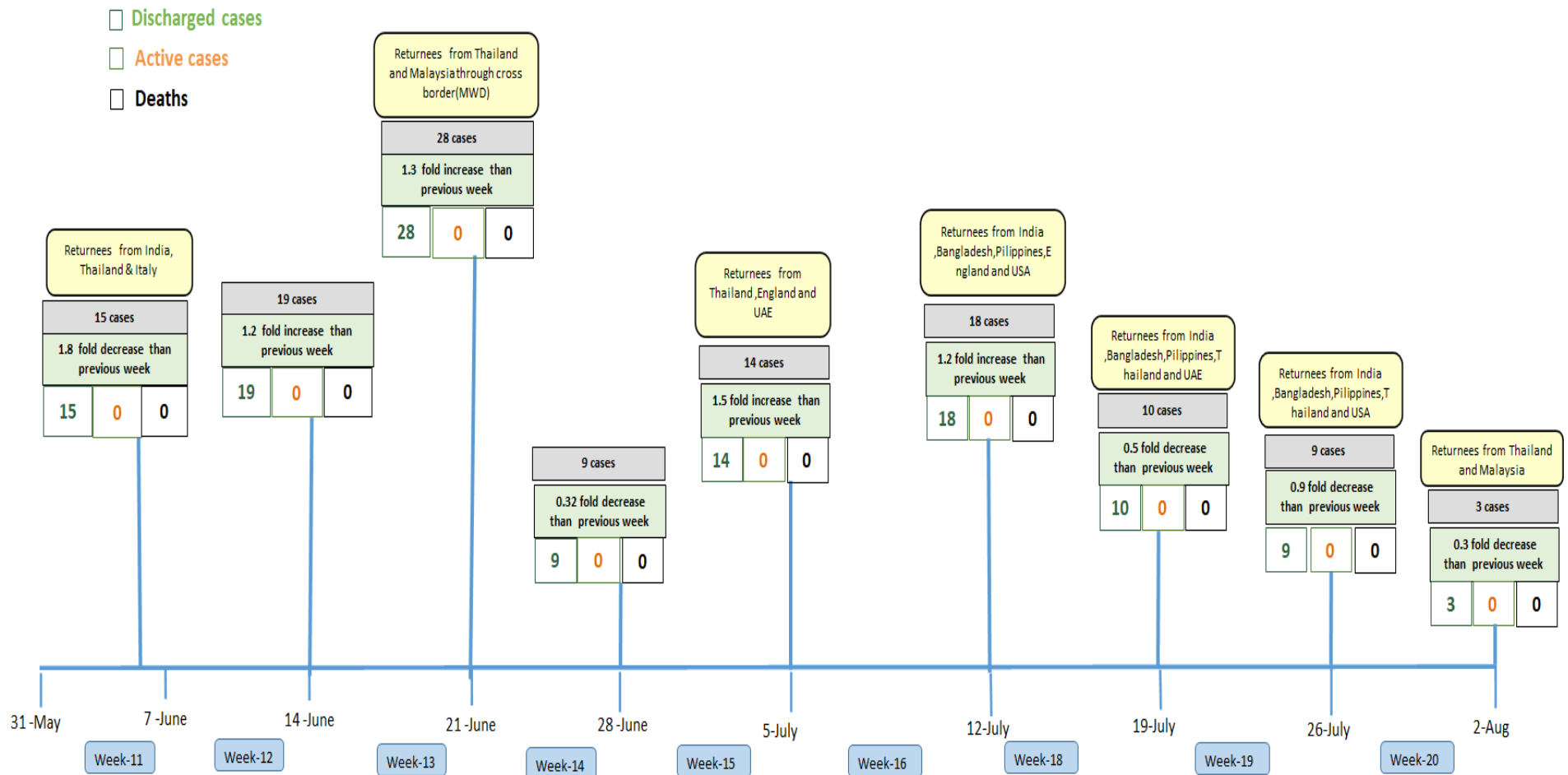


# Summary of new confirmed cases detection after first two cases (as of 30.9.2020)



- Confirmed cases were detected as a peak in the 4th week after first confirmed cases due to the religious event cluster.
- Confirmed cases were decreased but still raised than the first 3 weeks due to the religious event cluster and workplace cluster.
- There were an increased in numbers of cases in the 7th week after the first two cases due to the household cluster linked with a religious cluster.
- Confirmed cases were detected by a nearly two-fold rise in the 9th and 10th weeks after the first two cases because of returnees coming back by relief flights.

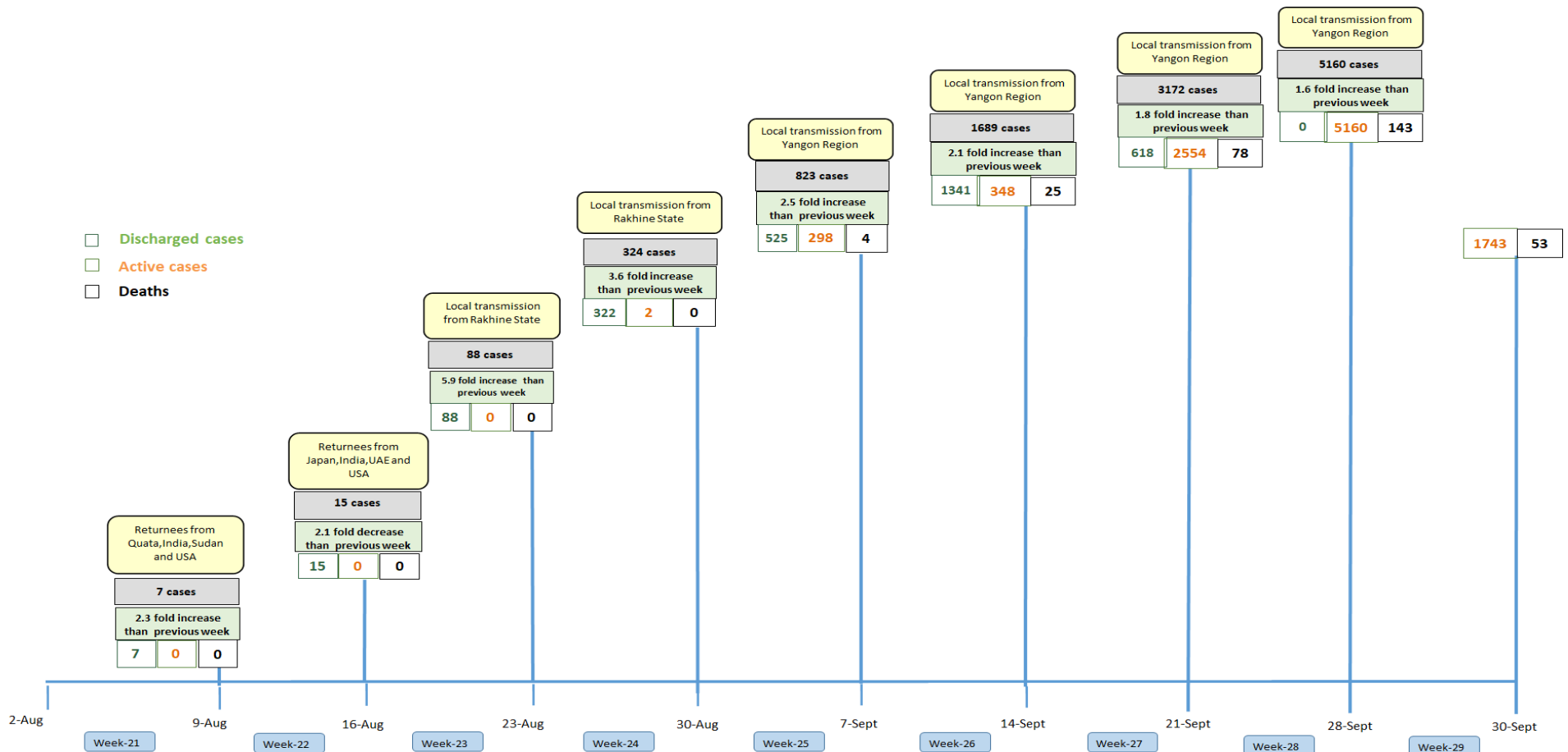
# Summary of new confirmed cases detection after first two cases (as of 30.9.2020)



- Confirmed cases were detected as a peak in the 4th week after first confirmed cases due to the religious event cluster.
- Confirmed cases were decreased but still raised than the first 3 weeks due to the religious event cluster and workplace cluster.
- There were an increased in numbers of cases in the 7th week after the first two cases due to the household cluster linked with a religious cluster.
- Confirmed cases were detected by a nearly two-fold rise in the 9th and 10th weeks after the first two cases because of returnees coming back by relief flights.

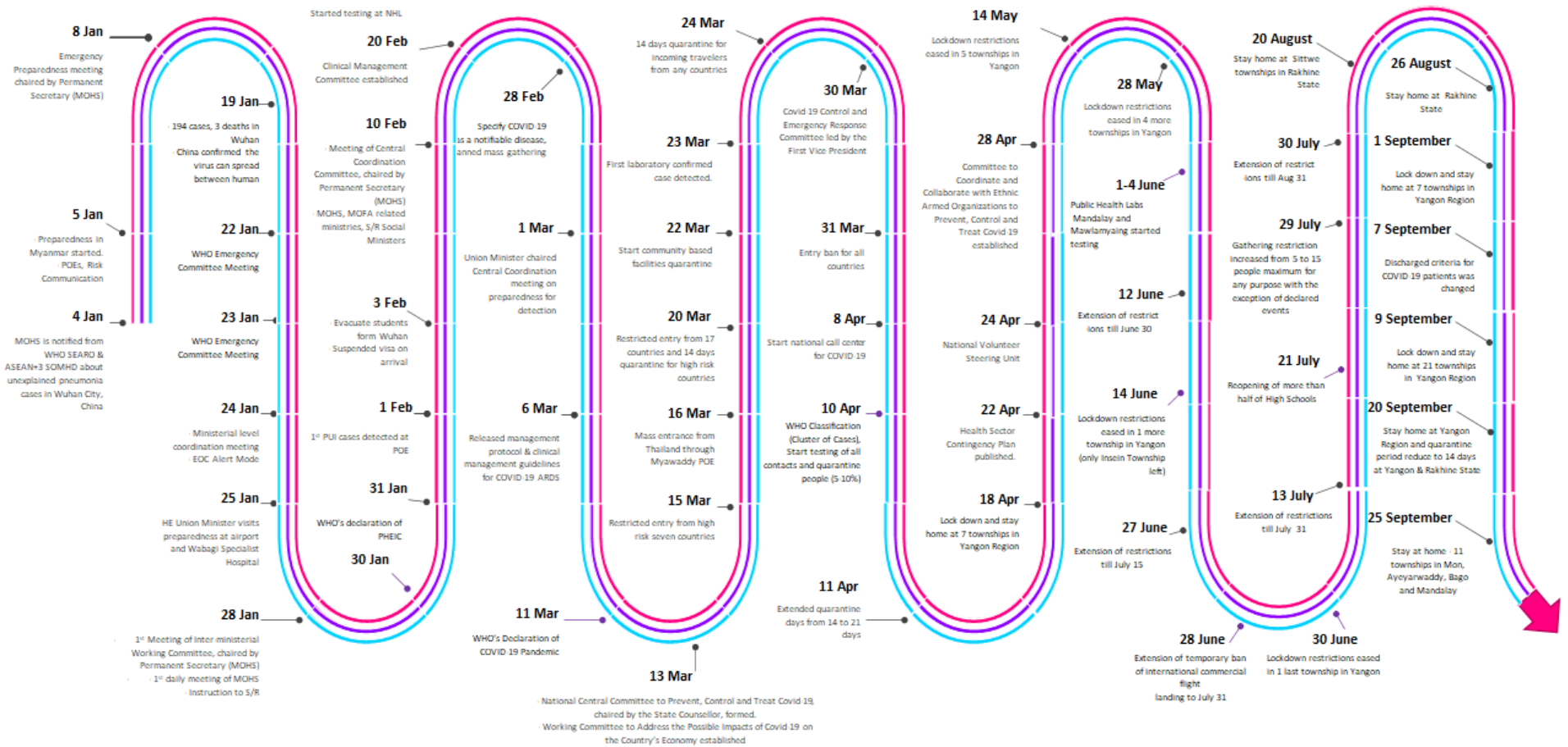


# Summary of new confirmed cases detection after first two cases (as of 30.9.2020)



- Confirmed cases were detected as a peak in the 4th week after first confirmed cases due to the religious event cluster.
- Confirmed cases were decreased but still raised than the first 3 weeks due to the religious event cluster and workplace cluster.
- There were an increased in numbers of cases in the 7th week after the first two cases due to the household cluster linked with a religious cluster.
- Confirmed cases were detected by a nearly two-fold rise in the 9th and 10th weeks after the first two cases because of returnees coming back by relief flights.

# Timeline of Preparedness and Response to COVID-19 in Myanmar (as of 30.9.2020)



Hotline Number— 0673 420 268

Data source - CEU, DMS, NHL, PHL (MDY and MLM), DMR, DSGH, State and Region Health Departments