



Ministry of Health and Sports (Myanmar)

Department of Public Health

Central Epidemiology Unit

(22 July 2020)

Coronavirus Disease 2019 (COVID-19)

Situation Report - 106

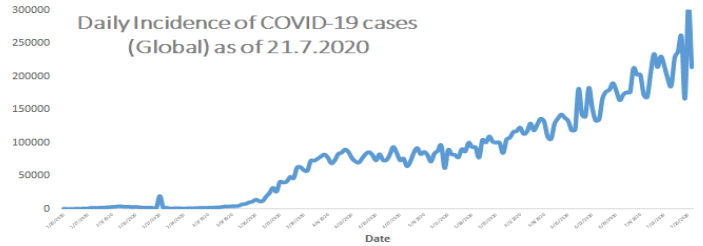
Data as reported by States and Regions by 11:00 PM MST 21 July 2020

Global Situation (WHO situation report - 183) data as of 14:30 MST 21 July 2020

Confirmed cases
14,562,550

Deaths
607,781

Case Fatality Rate
4.1 %



Myanmar Situation

Total Tested

105,635

Confirmed Cases

341

Negative

105,294

Recovered

280

82.1% of Confirmed cases

Active

55

16.1% of Confirmed cases

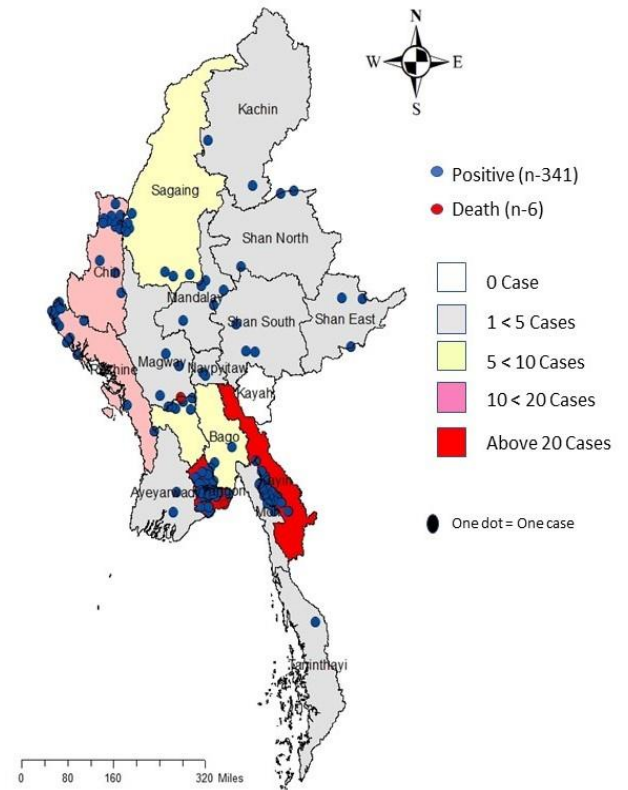
Death

6

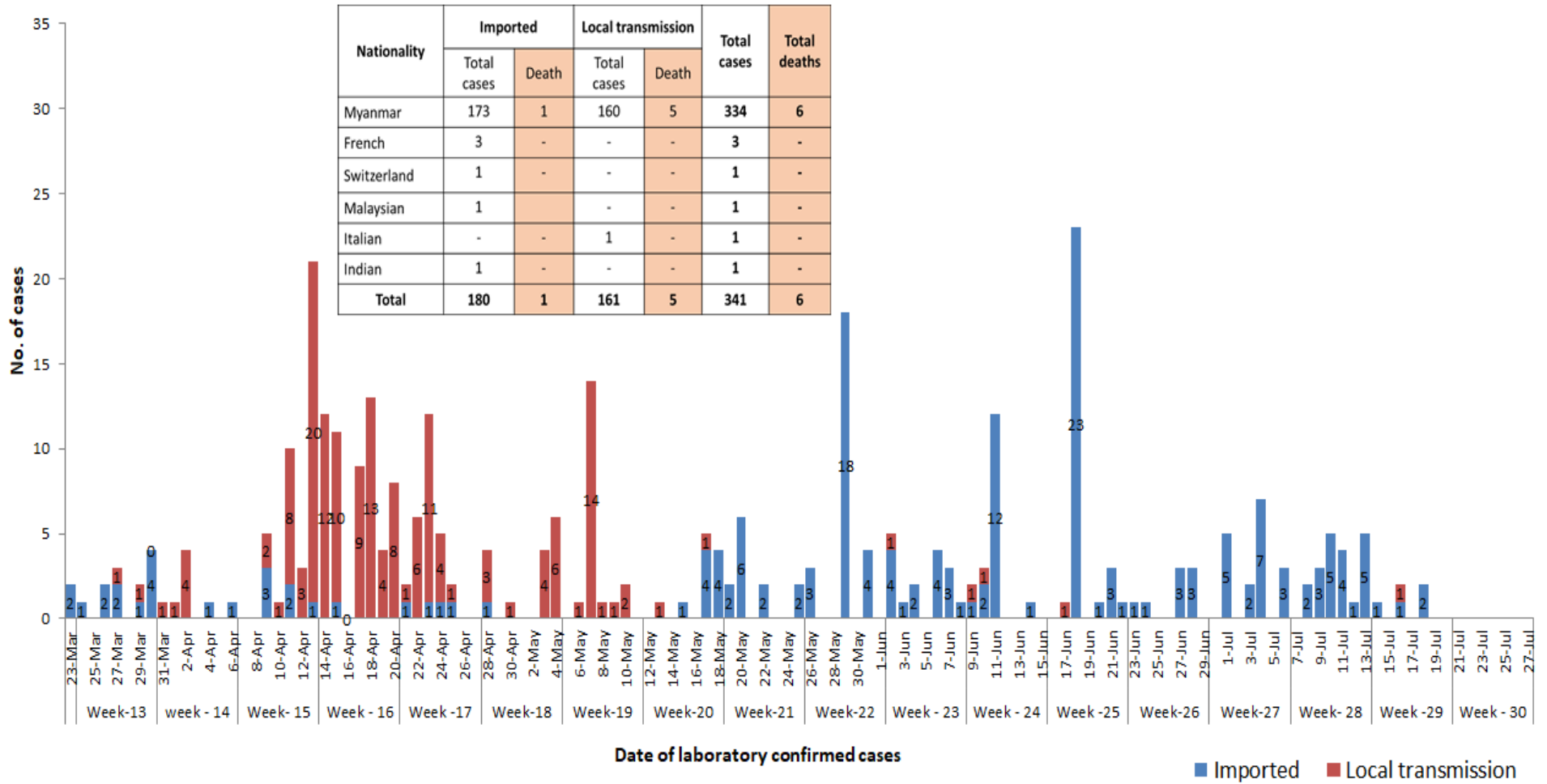
1.7% of Confirmed cases

No	State/Region	COVID –19 Confirmed case	Recovered	Deaths
1	Yangon	244	193	5
2	Kayin	26	24	-
3	Rakhine	15	11	-
4	Chin	12	10	-
5	Sagaing	9	9	-
6	Bago	9	8	1
7	Shan (South)	4	4	-
8	Mandalay	4	3	-
9	Shan (East)	3	3	-
10	Shan (North)	3	3	-
11	Magway	3	3	-
12	Naypyitaw	2	2	-
13	Ayeyarwaddy	2	2	-
14	Kachin	2	2	-
15	Mon	2	2	-
16	Thanintharyi	1	1	-
17	Kayah	-	-	-
Total		341	280	6

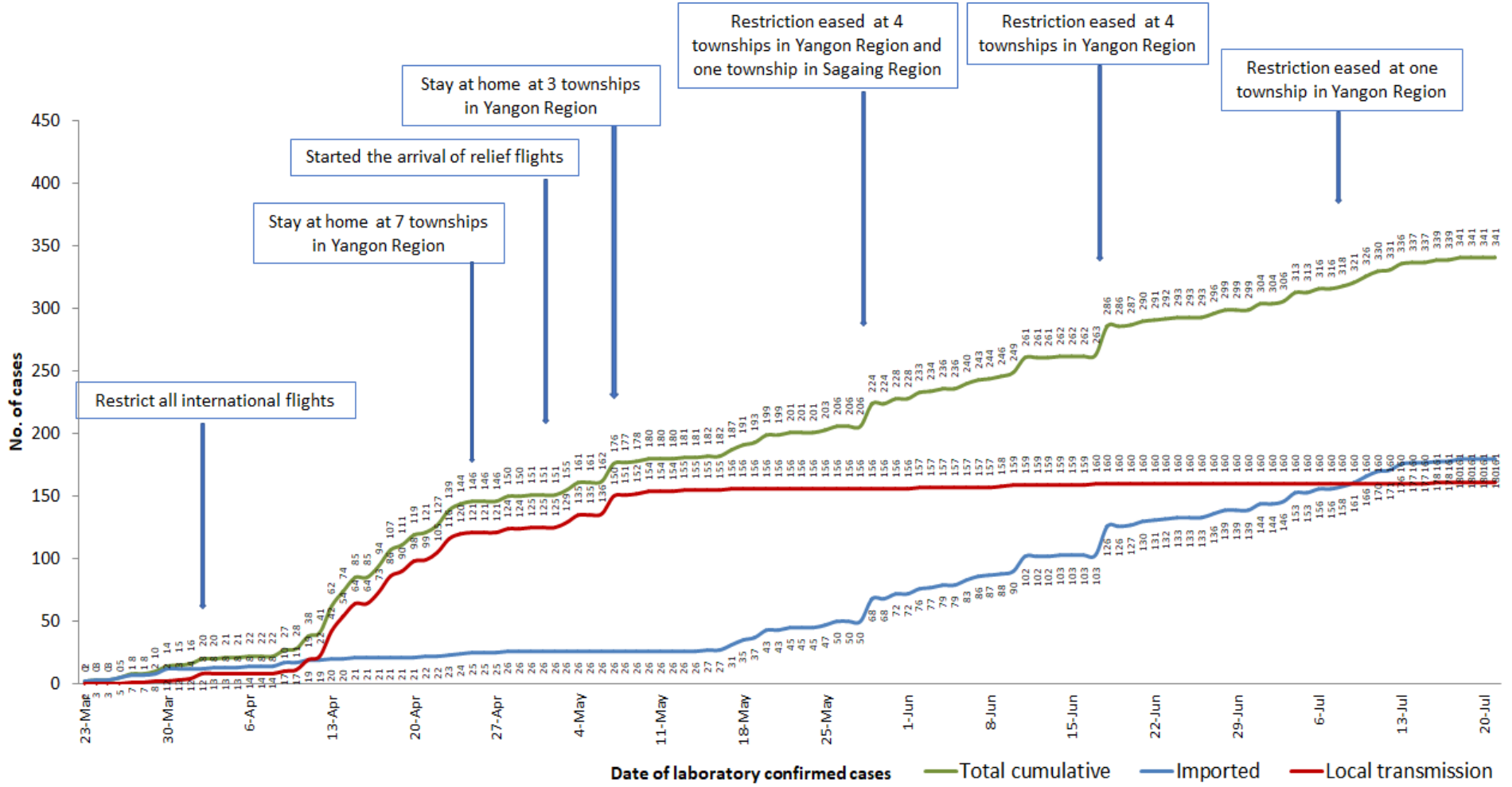
Map showing COVID-19 laboratory confirmed cases



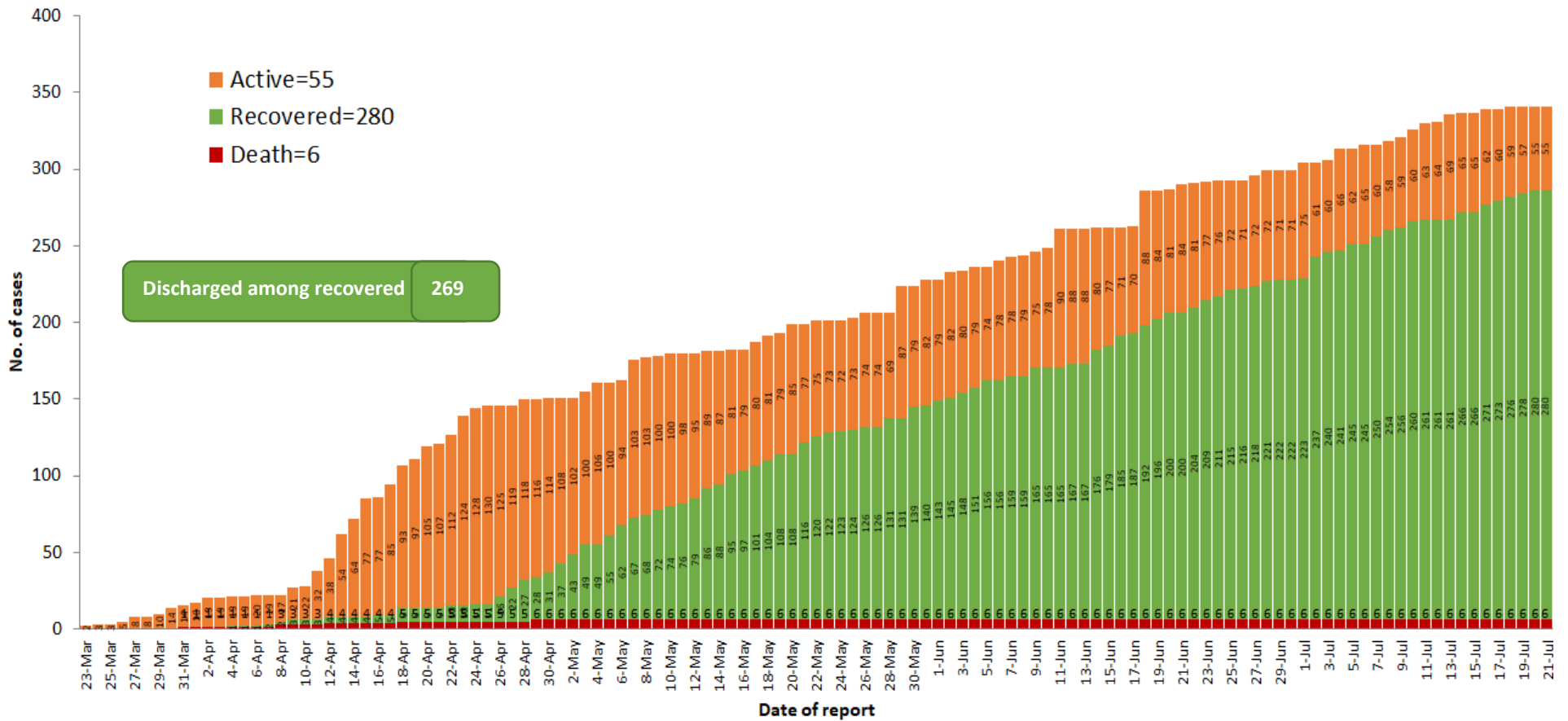
COVID-19 confirmed cases by types of transmissions (as of 21.7.2020, 11:00 pm) n=341



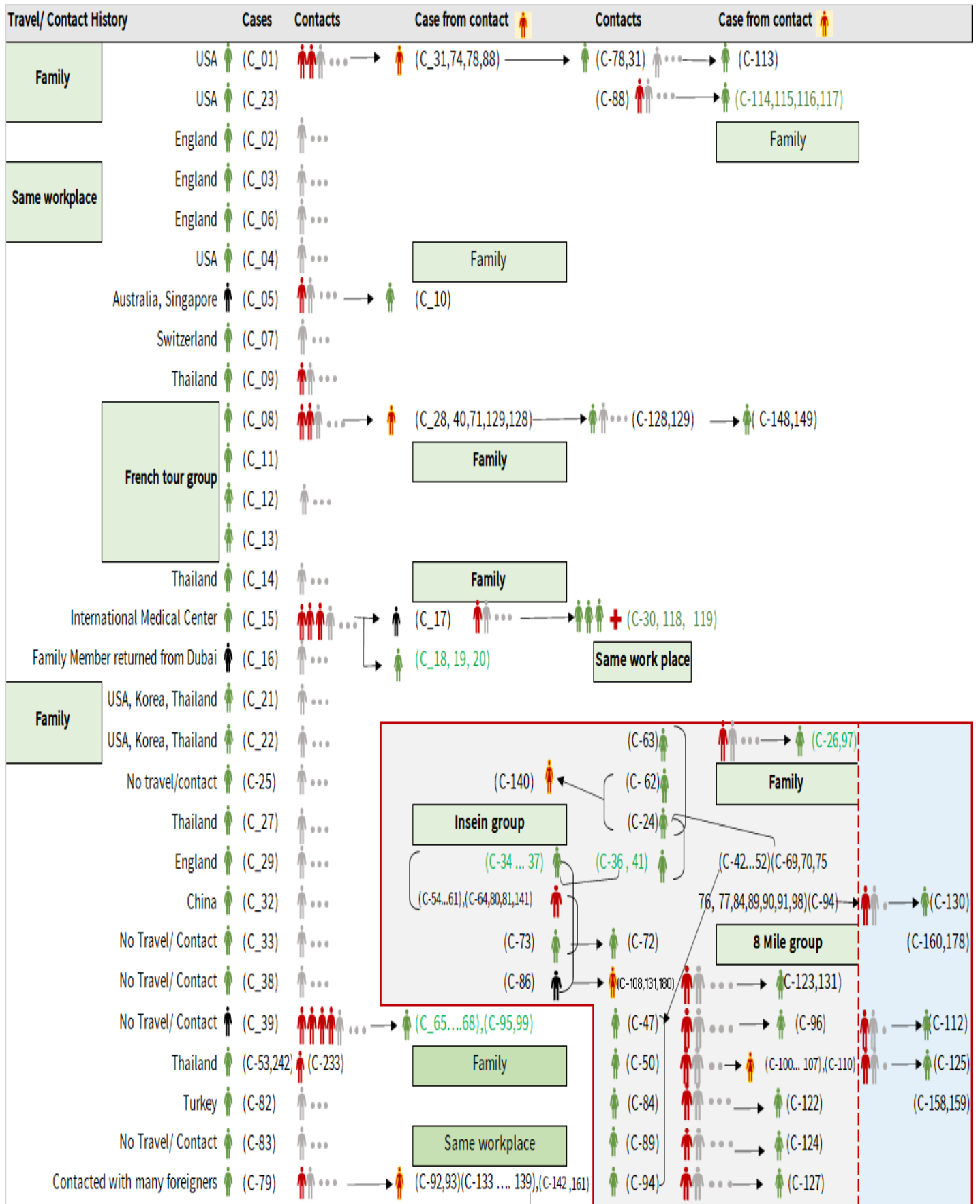
Total laboratory confirmed cases by date (as of 21.7.2020, 11:00 pm), n= 341



Cumulative Number of active confirmed cases, recovered and deaths (23.3.2020 – 21.7.2020), n (cumulative)=341



Summary of COVID-19 confirmed cases (as of 21.7.2020), n (contacts)= 5,774



Summary of COVID-19 confirmed cases (as of 21.7.2020), n (contacts)= 5,774

Travel/ Contact History	Cases	Contacts	Case from contact	Contacts	Case from contact
No Travel/ Contact	(C-85)	...			(C-110)
No travel / Contact	(C-87)	... →			(C-28,40,42,43,44,45,46,48,49,51,52)
No travel / Contact	(C-109)	...	(C-139) ... →	(C-146)	(C-54,55,56,57,58,60,61,63,64,69,70)
No travel / Contact	(C-111)	...	(C-133,134,142) ... →	(C-147)	(C-71,74,75,76,77,80,81,88,90,91,92,93)
No travel/Contact	(C- 120)	...			(C-98,100,101,102,103,104,105,106,107,108)
England	(C-317,327)	(C-121,302,303)			(C- 133,134,135,136,137,138,139,140,141,142)
No travel/Contact	(C-132)	...			(C-151,152,153,154,157,158,159,160,161)
Dubai/Thailand	(C-143)	...			(C-164,165,167,168,170,171,172,174)
No travel/Contact	(C-144)	...			(C-178,184,189,191,193,205,207,216,217,218)
India	(C- 145,204,209,210,213,215,220,221,223,224,229,225,227,228,252,255,259,296,299)				(C-226,233,234,235,237,246,253,258)
China	(C-150,230)				
Contact with religious event cluster	(C- 162)	... →	(C-151,152,153,154,157) → (C-165 ... 177)	(C-166,169,173,175,176,177)	
No travel/contact	(C-155)	... →	(C-163,164) (163)	(C-177) ... → (C-179)	... → (C-181)
No travel/contact	(C-156)	...			
No travel/contact	(C- 183)	...			
Malaysia	(C-184,189,273,280)	(C-182,185,186,191,188,190,187,200,201,232,275,282)			
UAE	(C-300,301,315,316,337,340)	(C-193,192,194,195,196,197,198,199,301,314)			
Italy	(C-243,202)				
No travel/Contact	(C- 231)				
Bangladesh	(C-234,244,247,250,262,293,308,309,310,325,326,334)	(C-244,245,247,248,250,262,291,292)			
No travel/contact	(C-245)	...			
No travel/contact	(C-249)				
No travel/contact	(C-263)	...			
Thailand	(C-269,279,332,333,335,336,338)	(C-264,265,266,267,268,270,271,272,273,274,276,277,278,280,281,283,284,285,286,287,294,304,312)			
Quata	(C-288)	(C-289,290)			
India	(C-203,205.....214,216...219,221.... 229,235....240,241,246,251,253,254...258,260,261,295,297,298,305,306,307,318,322,323,324,328,329,330)				
Lao	(C-311)	...			
Singapore	(C-313)	...			
Philippines	(C-319,320,321)	...			
USA	(C-331)	...			
No travel/contact	(C-339)	...			

Household

Summary of current situation

Type	New (20.7.2020-21.7.2020)	Total (on 21.7.2020)
Suspected and Person Under Investigation (PUI)	20	174
Hospital Quarantine	15	55
Facility Quarantine	808	21,933

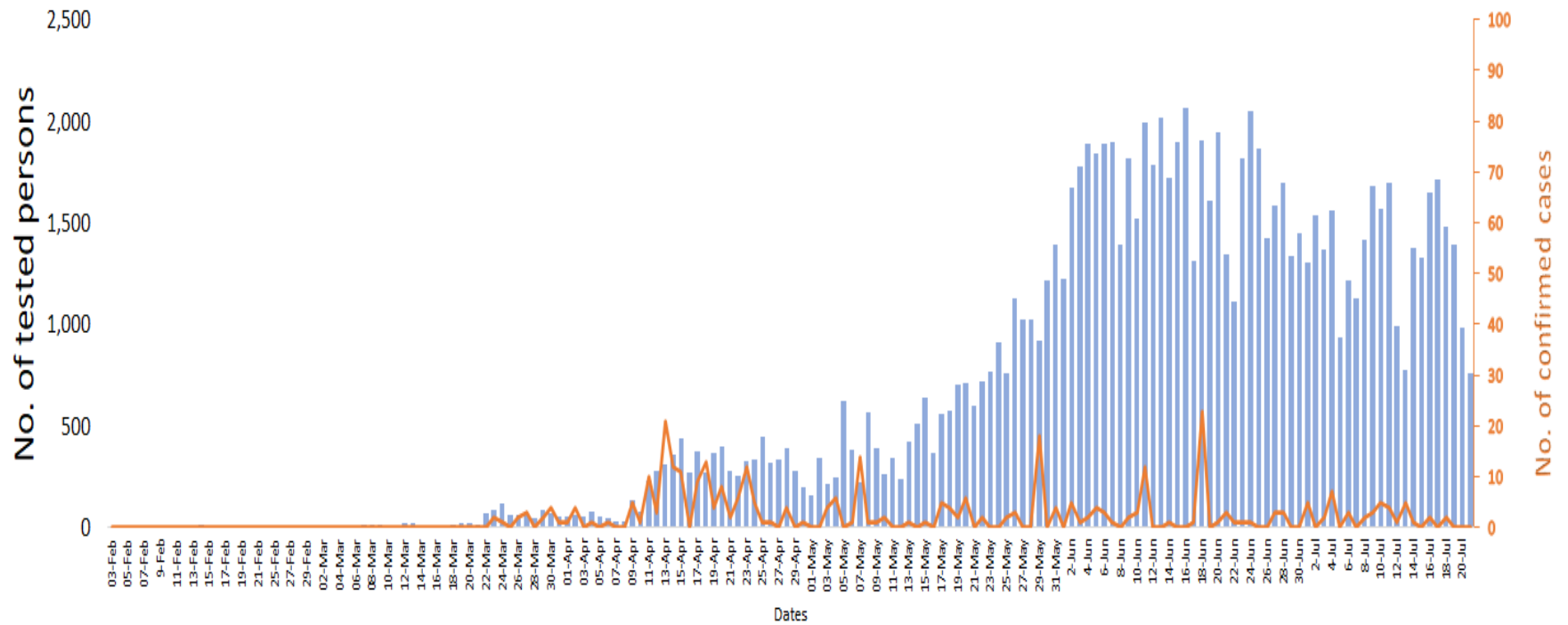
Person under Investigation (PUI) by State/Region hospitals (31.1.2020 – 21.7.2020) n= 6,582

No.	State/Region	PUI
1	Yangon	3,321
2	Mandalay	1,335
3	Kayin	281
4	Mon	267
5	Shan (N)	222
6	Magway	210
7	Bago	180
8	Shan (E)	123
9	Ayeyarwaddy	102
10	Shan (S)	100
11	Sagaing	90
12	Kayah	80
13	Thanintharyi	72
14	Rakhine	68
15	Naypyitaw	64
16	Kachin	39
17	Chin	28
Total		6,582

No. of Facility Quarantine sites and Quarantined people on 21.7.2020

No.	State/Region	No. of facilities	Total no. of quarantine
1	Yangon	66	3,684
2	Bago	266	3,001
3	Mon	317	2,865
4	Kayin	412	2,552
5	Tanintharyi	189	1,824
6	Magway	304	1,711
7	Mandalay	86	1,083
8	Sagaing	181	1,044
9	Rakhine	304	905
10	Shan South	95	833
11	Ayeyarwaddy	166	789
12	Kachin	422	724
13	Naypyitaw	2	367
14	Shan North	262	213
15	Kayah	18	141
16	Chin	13	125
17	Shan East	11	72
Total		3,114	21,933

COVID-19 confirmed cases among tested by date (as of 21.7.2020)

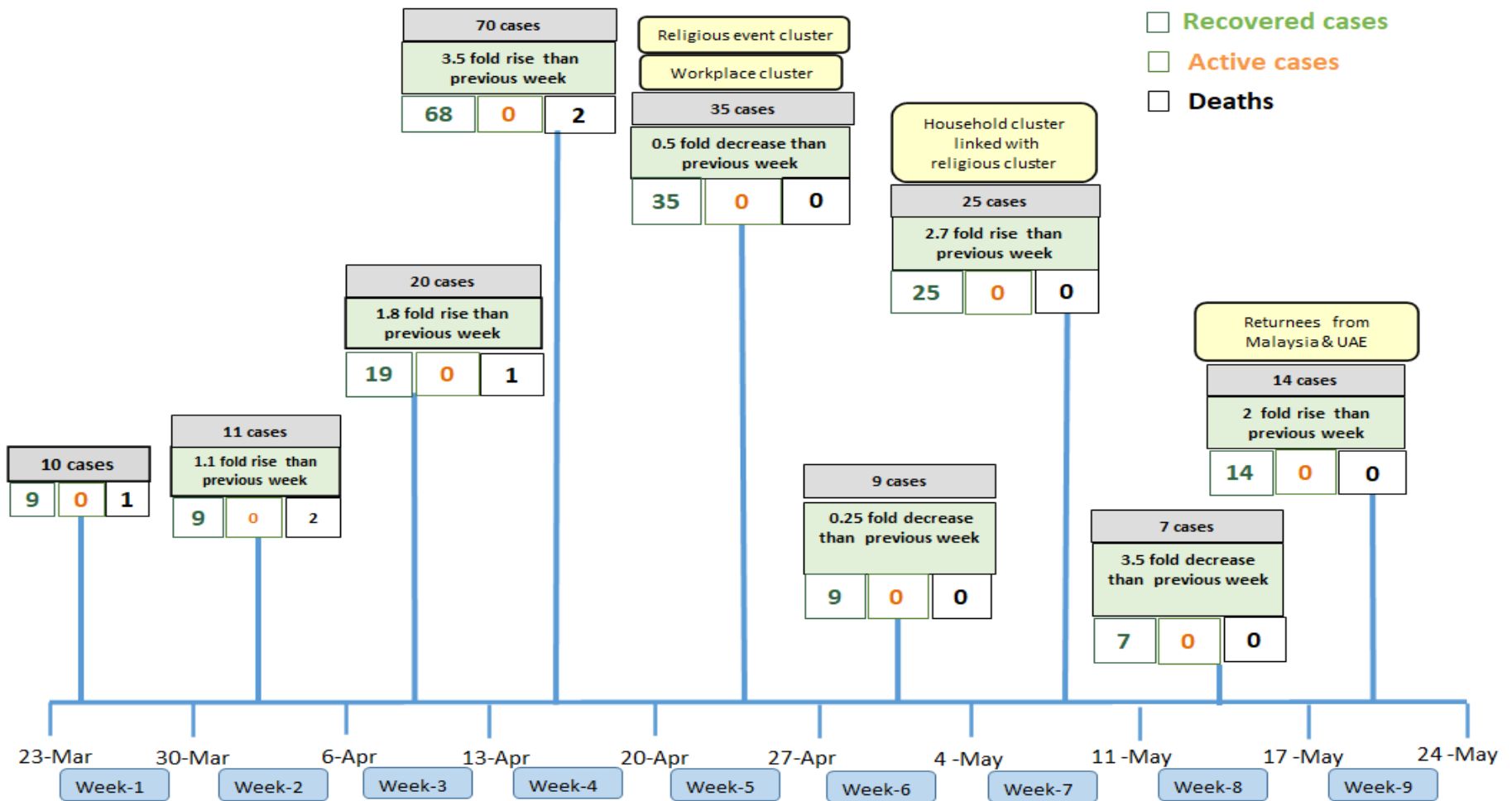


Total tested persons - 105,635

Total confirmed cases - 341

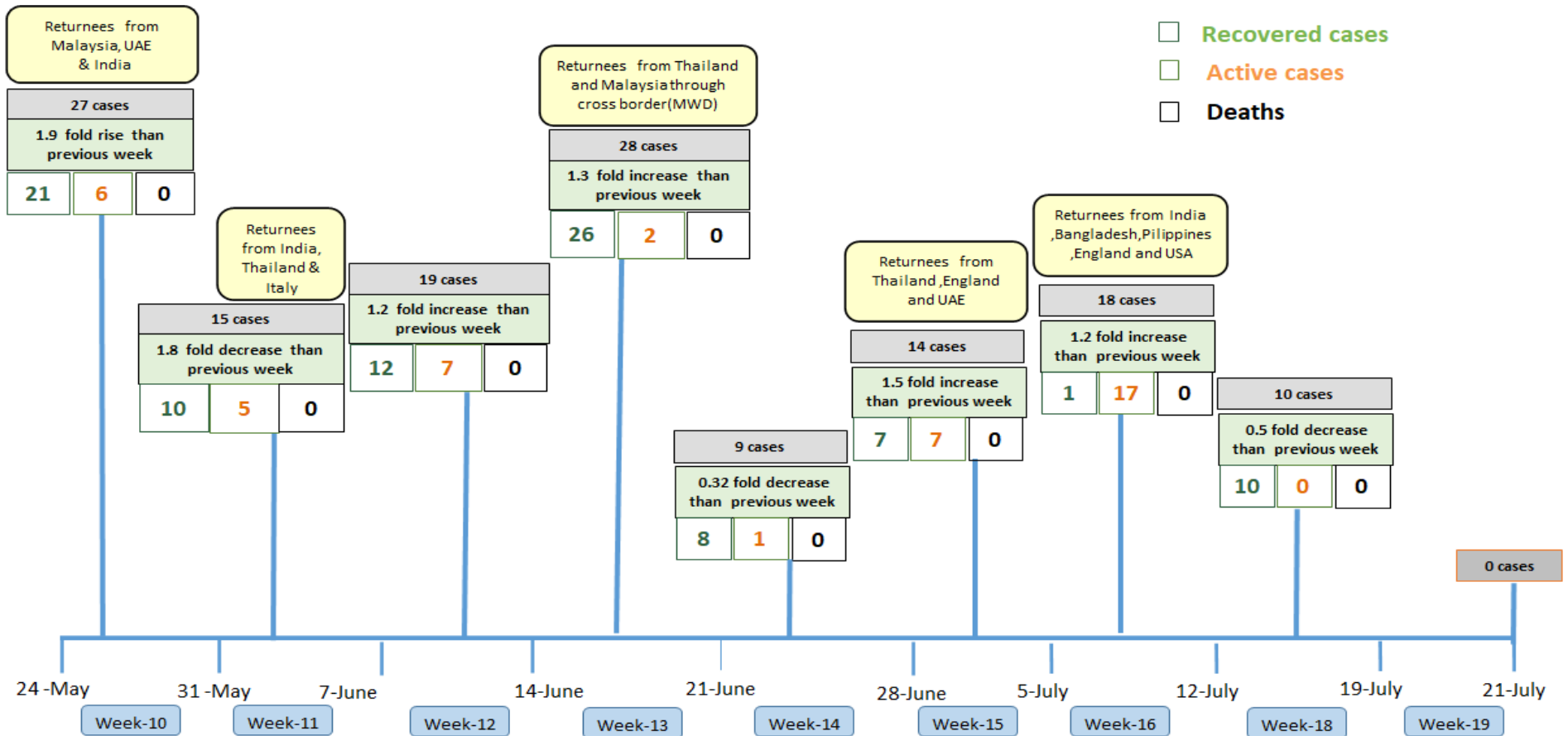
Tested person Confirmed case

Summary of new confirmed cases detection after first two cases (as of 21.7.2020)



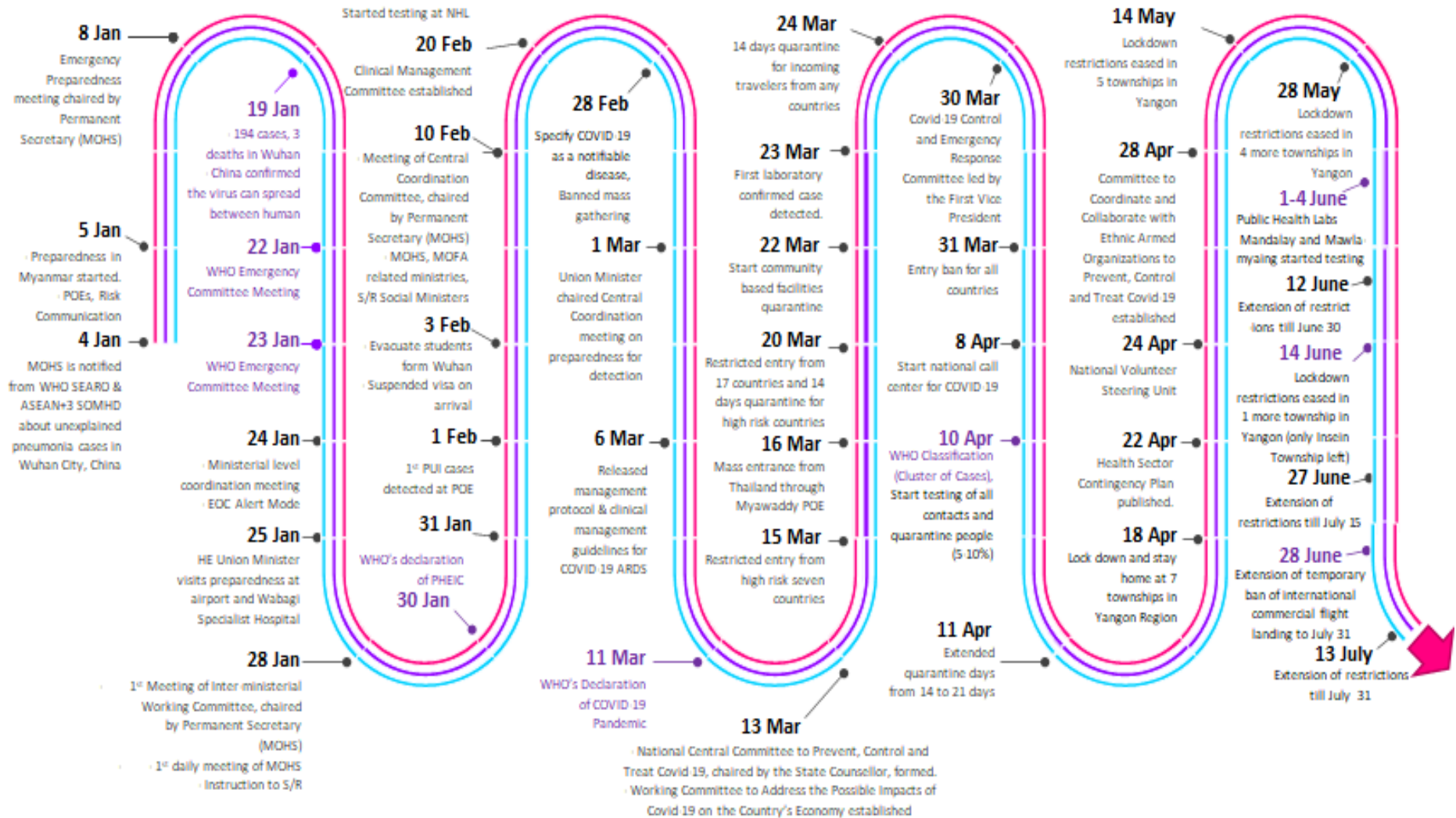
- Confirmed cases were detected as a peak in the 4th week after first confirmed cases due to the religious event cluster.
- Confirmed cases were decreased but still raised than the first 3 weeks due to the religious event cluster and workplace cluster.
- There were an increased in numbers of cases in the 7th week after the first two cases due to the household cluster linked with a religious cluster.
- Confirmed cases were detected by a nearly two-fold rise in the 9th and 10th weeks after the first two cases because of returnees coming back by relief flights.

Summary of new confirmed cases detection after first two cases (as of 21.7.2020)



- Confirmed cases were detected as a peak in the 4th week after first confirmed cases due to the religious event cluster.
- Confirmed cases were decreased but still raised than the first 3 weeks due to the religious event cluster and workplace cluster.
- There were an increased in numbers of cases in the 7th week after the first two cases due to the household cluster linked with a religious cluster.
- Confirmed cases were detected by a nearly two-fold rise in the 9th and 10th weeks after the first two cases because of returnees coming back by relief flights.

Timeline of Preparedness and Response to COVID-19 in Myanmar (as of 21.7.2020)



Hotline Number— 0673 420 268

Data source - CEU, DMS, NHL, PHL (MDY and MLM), DMR, DSGH, State and Region Health Departments