



Ministry of Health and Sports (Myanmar)

Department of Public Health

Central Epidemiology Unit

(27 June 2020)

Coronavirus Disease 2019 (COVID-19)

Situation Report - 81

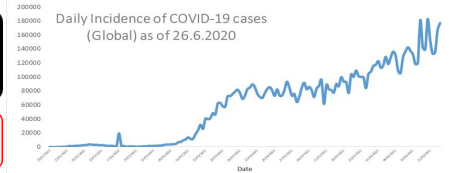
Data as reported by States and Regions by 11:00 PM MST 26 June 2020

Global Situation
(WHO situation report - 158)
data as of 14:30 MST 26 June 2020

Confirmed cases
9,473,214

Deaths
484,249

Case Fatality Rate
5.1 %



Myanmar Situation

Total tested
71,692

Confirmed cases
293

Negative
71,399

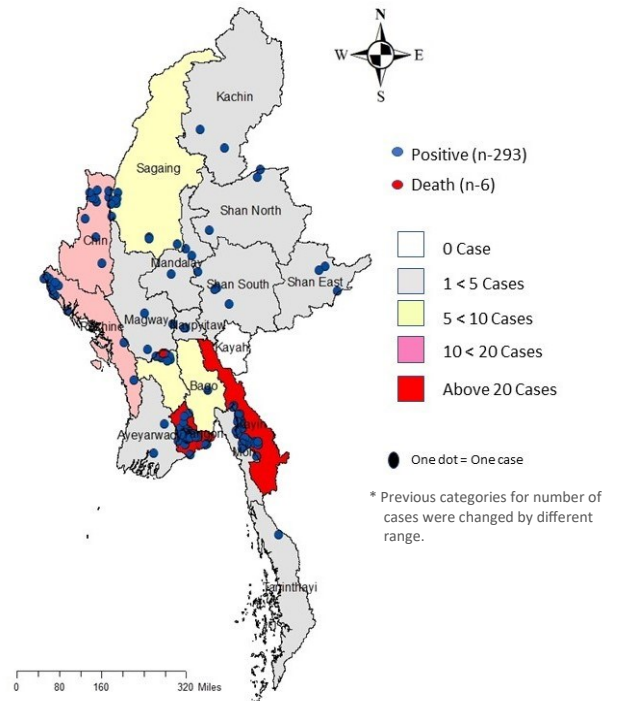
Recovered
216
73.7 % of confirmed cases

Active
71
24.2% of confirmed cases

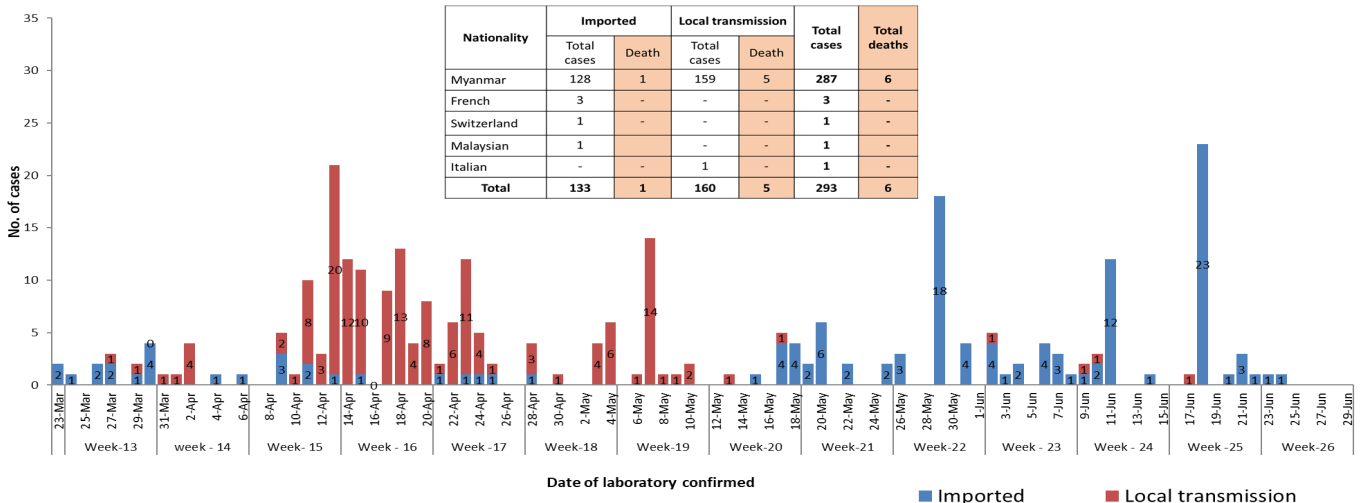
Death
6
2.0% of confirmed cases

No.	State/Region	COVID-19 Confirmed case	Recovered	Deaths
1	Yangon	204	167 (1 New)	5
2	Kayin	25	2	-
3	Rakhine	12	3	-
4	Chin	10	6	-
5	Sagaing	9	8	-
6	Bago	8	7	1
7	Shan(South)	4	3	-
8	Mandalay	3	3	-
9	Shan(East)	3	4	-
10	Shan(North)	3	2	-
11	Magway	3	3	-
12	Naypyitaw	2	2	-
13	Ayeyarwaddy	2	2	-
14	Kachin	2	1	-
15	Mon	2	1	-
16	Thanintharyi	1	1	-
17	Kayah	-	-	-
Total		293	216 (1 New)	6

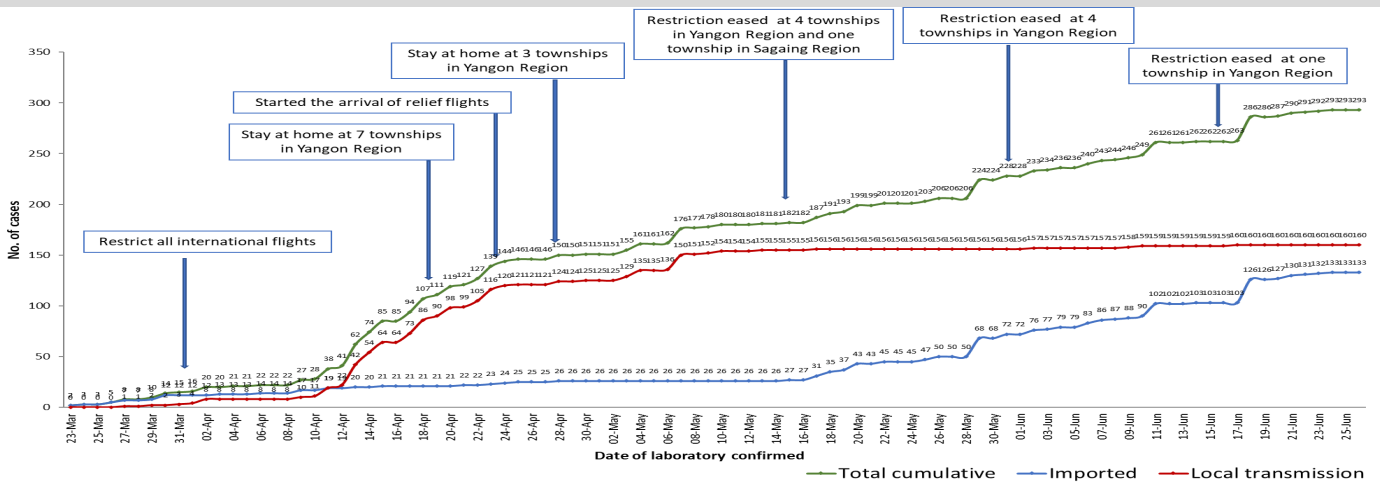
Map showing COVID-19 laboratory confirmed cases



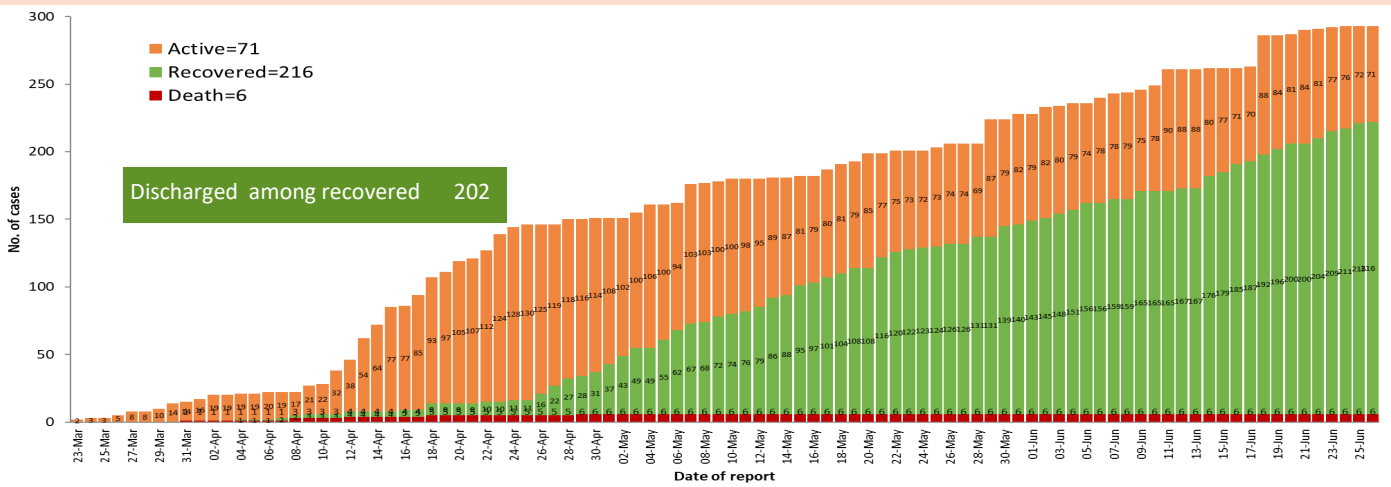
COVID-19 confirmed cases by types of transmissions (as of 26.6.2020, 11:00 pm) n=293



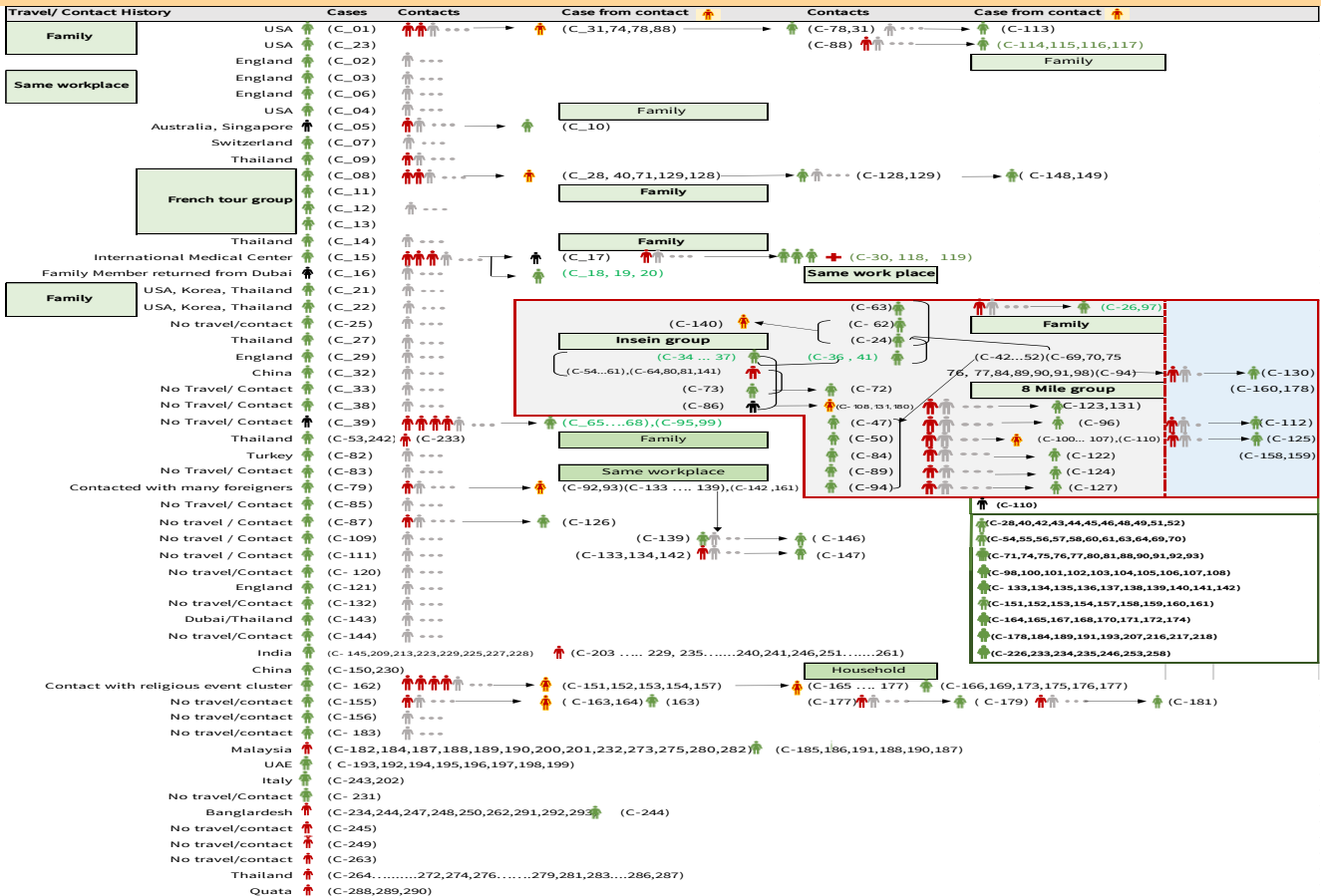
Total laboratory confirmed cases by date (as of 26.6.2020, 11:00 pm), n= 293



Cumulative Number of active confirmed cases, recovered and deaths (23.3.2020 – 26.6.2020), n (cumulative)=293



Summary of COVID-19 confirmed cases (as of 26.6.2020) ,n (contacts)= 5,540



Summary of current situation

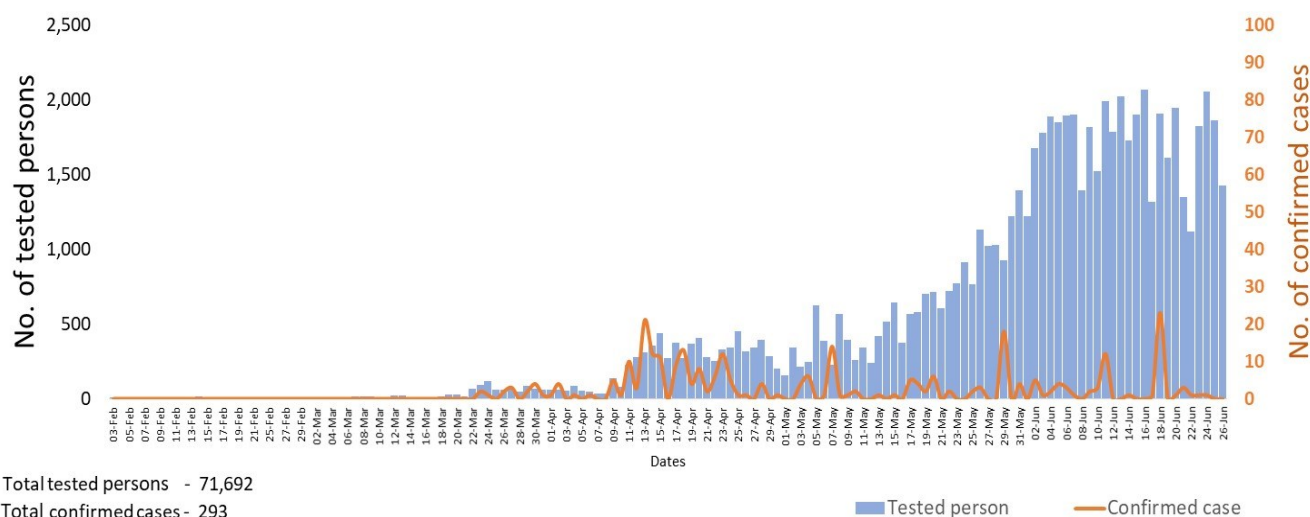
Type	New (25.6.2020-26.6.2020)	Total (on 26.6.2020)
Suspected and Person Under Investigation (PUI)	30	195
Hospital Quarantine	2	75
Facility Quarantine	1,388	30,852

Person under Investigation (PUI) by State/Region hospitals (31.1.2020 – 26.6.2020) n= 5,878

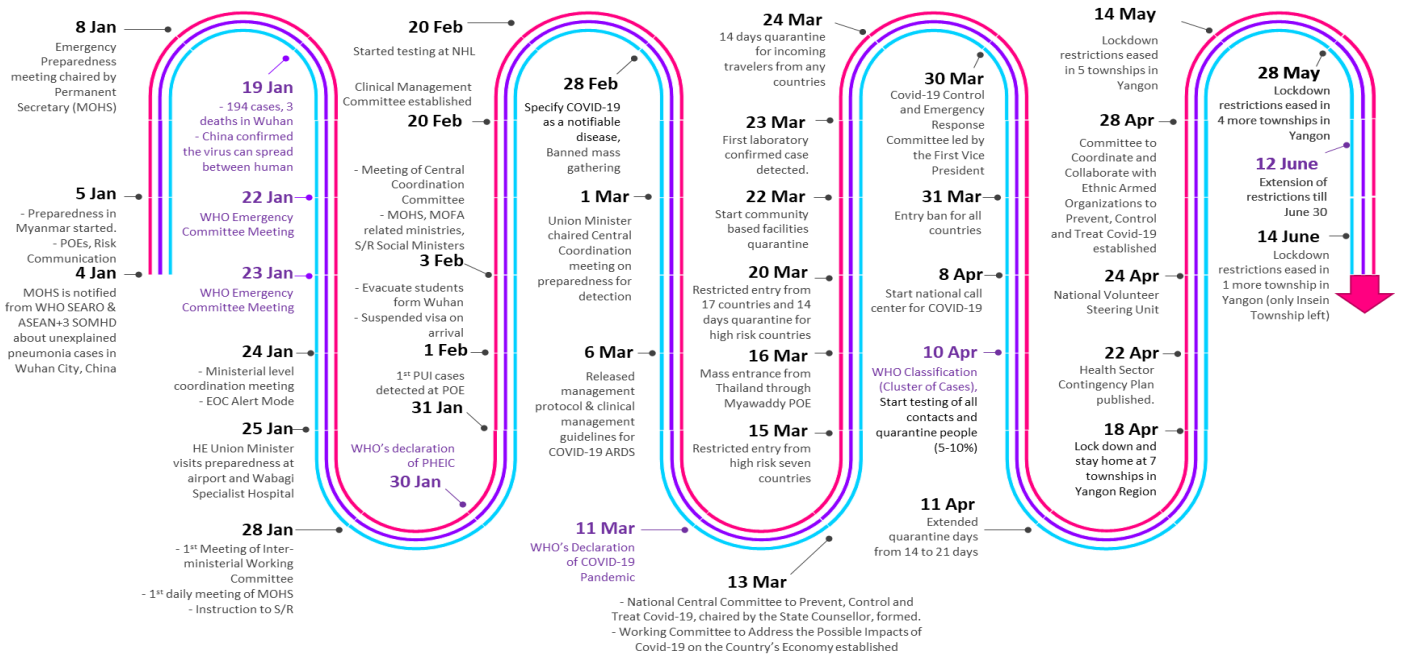
No. of Facility Quarantine sites and Quarantined people on 26.6.2020

No.	State/Region	PUI	No.	State/Region	No. of facilities	Total no. of quarantine
1.	Yangon	3,008	1.	Bago	353	4,198
2.	Mandalay	1,125	2.	Yangon	83	3,674
3.	Kayin	230	3.	Magway	2,625	3,612
4.	Mon	219	4.	Kayin	837	3,550
5.	Shan(N)	200	5.	Mon	295	2,979
6.	Magway	198	6.	Kachin	412	2,590
7.	Bago	180	7.	Mandalay	128	1,840
8.	Shan(E)	115	8.	Sagaing	969	1,690
9.	Ayeyarwaddy	102	9.	Rakhine	396	1,601
10.	Shan(S)	96	10.	Shan South	129	1,337
11.	Sagaing	85	11.	Tanintharyi	189	1,289
12.	Kayah	76	12.	Ayeyarwaddy	198	1,079
13.	Rakhine	67	13.	Naypyitaw	19	598
14.	Naypyitaw	63	14.	Shan North	239	340
15.	Thanintharyi	58	15.	Chin	27	223
16.	Kachin	34	16.	Kayah	18	136
17.	Chin	22	17.	Shan East	11	116
Total		5,878	Total		6,928	30,852

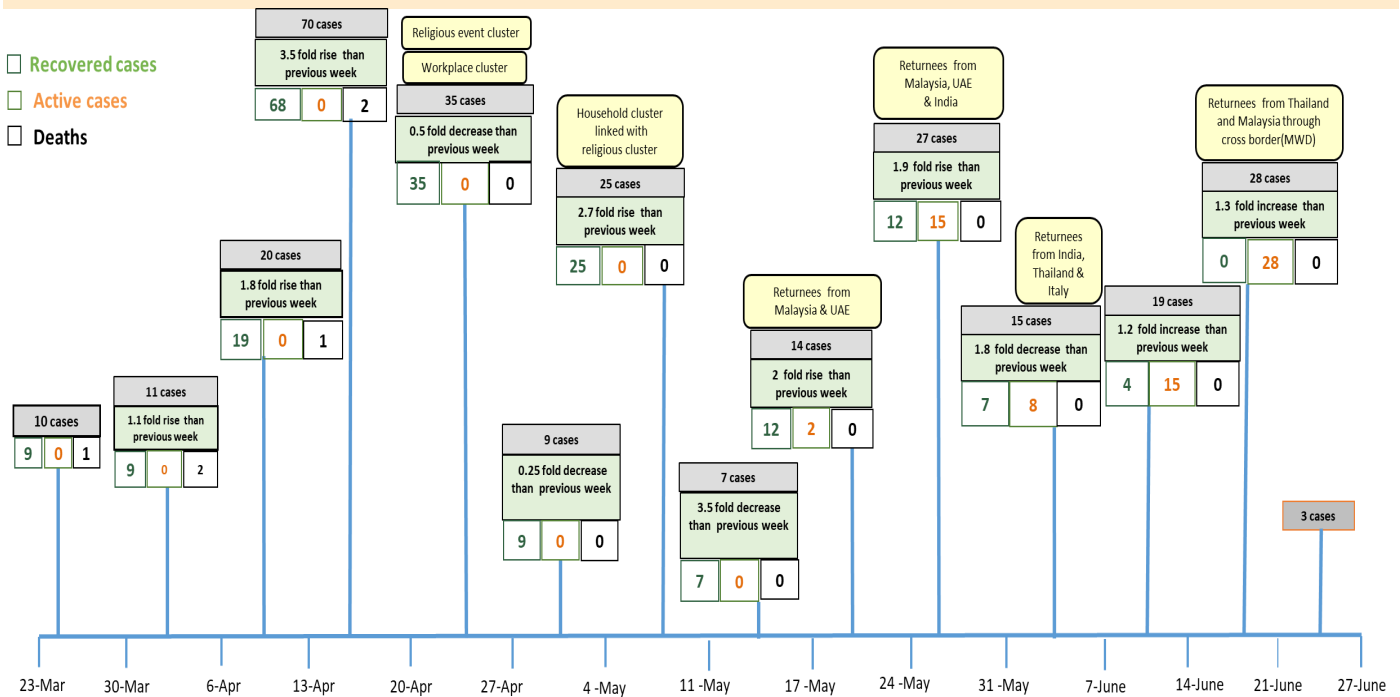
COVID-19 confirmed cases among tested by date (as of 26.6.2020)



Timeline of Preparedness and Response to COVID-19 in Myanmar (as of 26.6.2020)



Summary of new confirmed cases detection after first two cases (as of 26.6.2020)



- Confirmed cases were detected as a peak in the 4th week after first confirmed cases due to the religious event cluster.
- Confirmed cases were decreased but still raised than the first 3 weeks due to the religious event cluster and workplace cluster.
- There were an increased in numbers of cases in the 7th week after the first two cases due to the household cluster linked with a religious cluster.
- Confirmed cases were detected by a nearly two-fold rise in the 9th and 10th weeks after the first two cases because of returnees coming back by relief flights.