



Ministry of Health and Sports (Myanmar)

Department of Public Health

Central Epidemiology Unit

(24 May 2020)

Coronavirus Disease 2019 (COVID-19)

Situation Report - 47

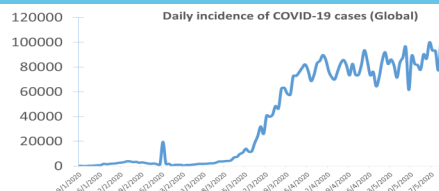
Data as reported by States and Regions by 12:00 Midnight MST 23 May 2020

Global Situation
(WHO situation report - 124)
data as of 14:30 MST 23 May 2020

Confirmed cases
5,103,006

Deaths
333,401

Case Fatality Rate
6.5 %



Myanmar Situation

Total tested
18,644

Confirmed cases
201

Negative
18,443

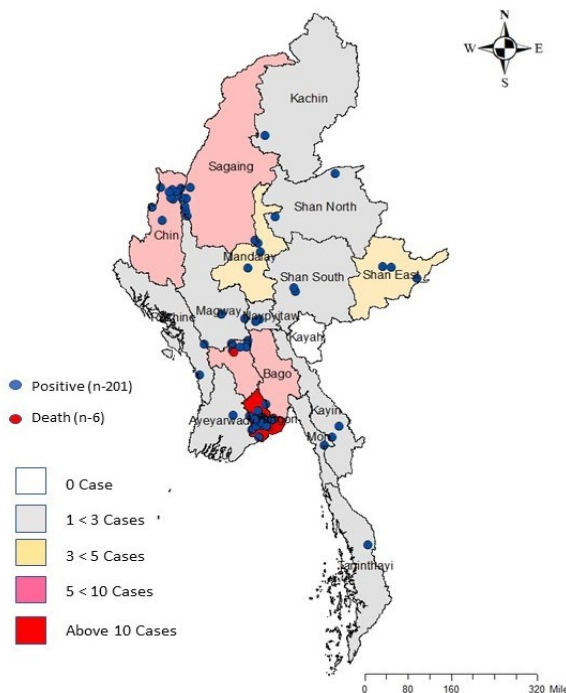
Recovered
122
60.6% of confirmed cases

Active
73
36.3% of confirmed cases

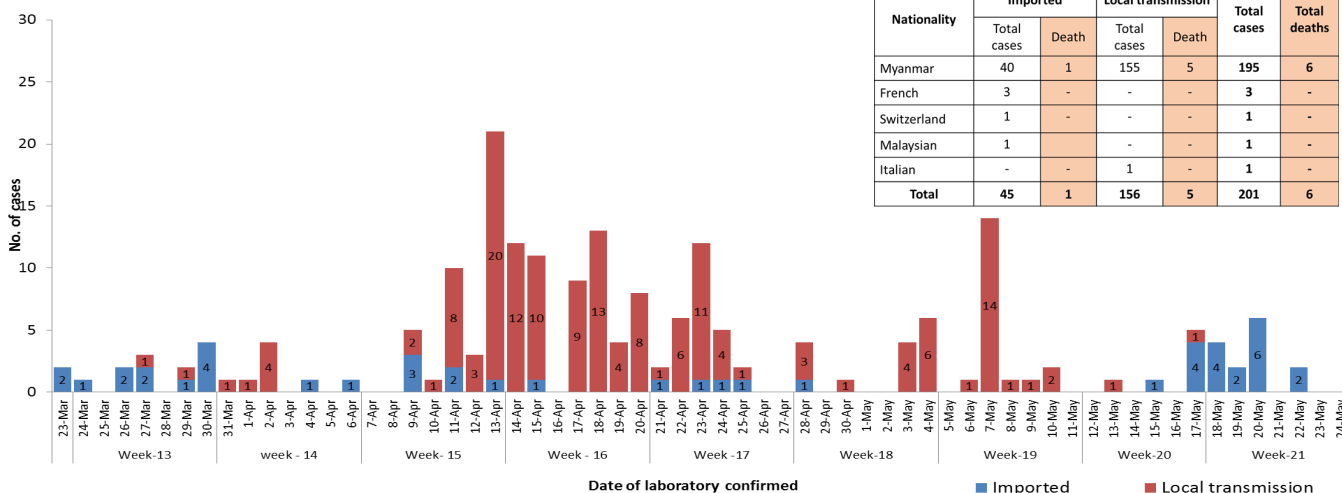
Death
6
2.9% of confirmed cases

No.	State/Region	COVID-19 Confirmed case	Recovered	Deaths
1.	Yangon	156	94 (2 new)	5
2.	Chin	9	2	-
3.	Bago	7	6	1
4.	Sagaing	7	6	-
5.	Shan(East)	3	2	-
6.	Mandalay	3	3	-
7.	Shan(South)	2	2	-
8.	Shan(North)	2	2	-
9.	Naypyitaw	2	2	-
10.	Kayin	2	-	-
11.	Magway	2	1	-
12.	Rakhine	2	-	-
13.	Mon	1	1	-
14.	Kachin	1	1	-
15.	Thanintharyi	1	-	-
16.	Ayeyarwaddy	1	-	-
17.	Kayah	-	-	-
Total		201	122 (2 new)	6

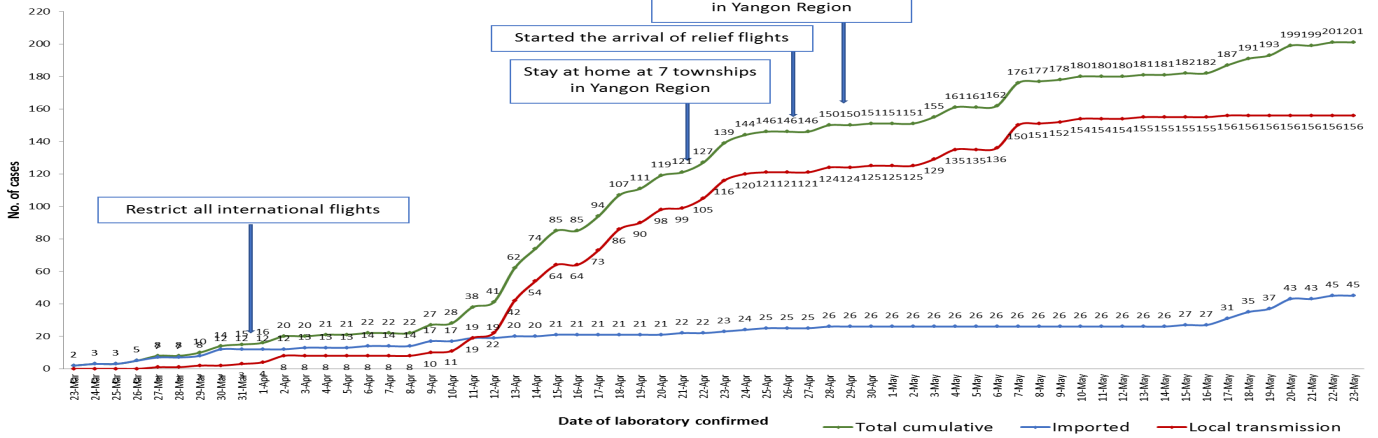
Map showing COVID-19 laboratory confirmed cases



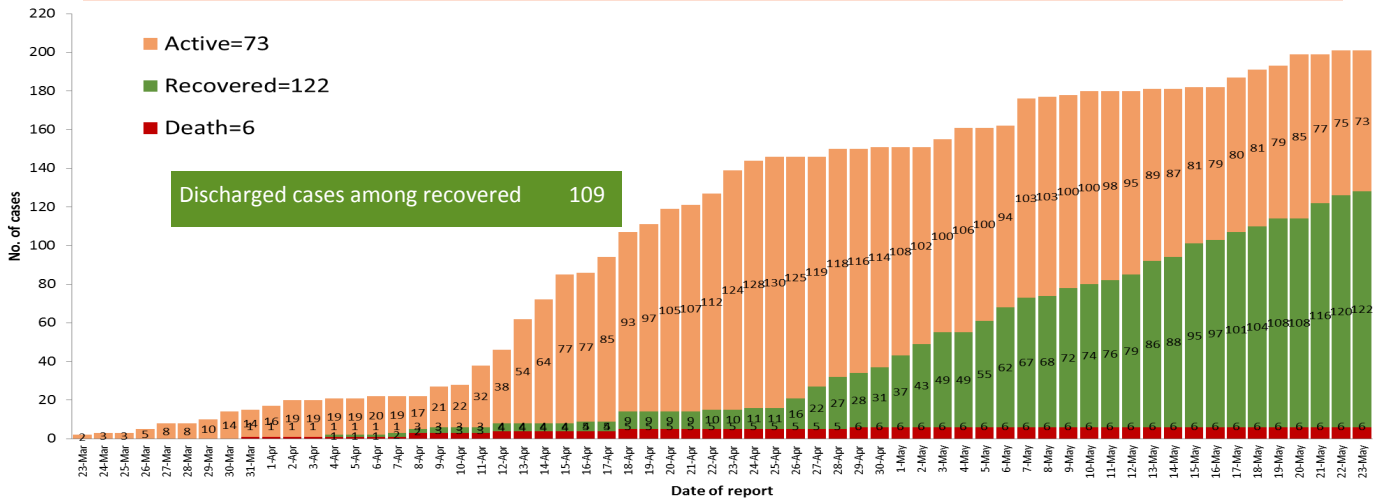
COVID-19 confirmed cases by types of transmissions (as of 23-5-2020,12:00 midnight) n=201



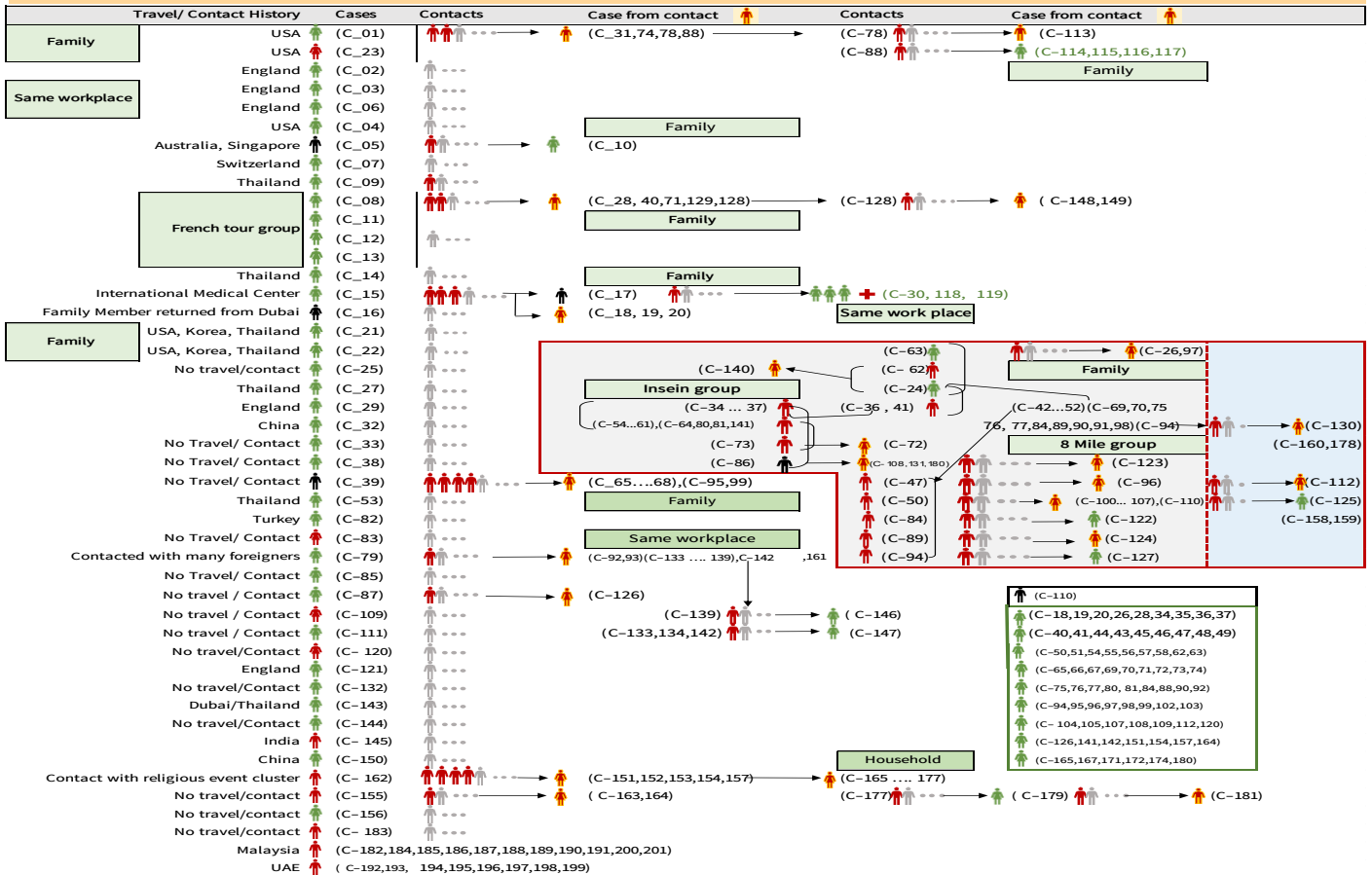
Total laboratory confirmed cases by date (as of 23.5.2020, 12:00 Midnight), n= 201



Cumulative Number of active confirmed cases, recovered and death (23.3.2020-23.5.2020), n=201



Summary of COVID-19 confirmed cases (as of 23-5-2020), n= 3,944



Summary of current situation

Type	New (22.5.2020–23.5.2020)	Total (on 23.5.2020)
Suspected and Person Under Investigation (PUI)	35	293
Hospital Quarantine	6	119
Facility Quarantine	1,573	57,325

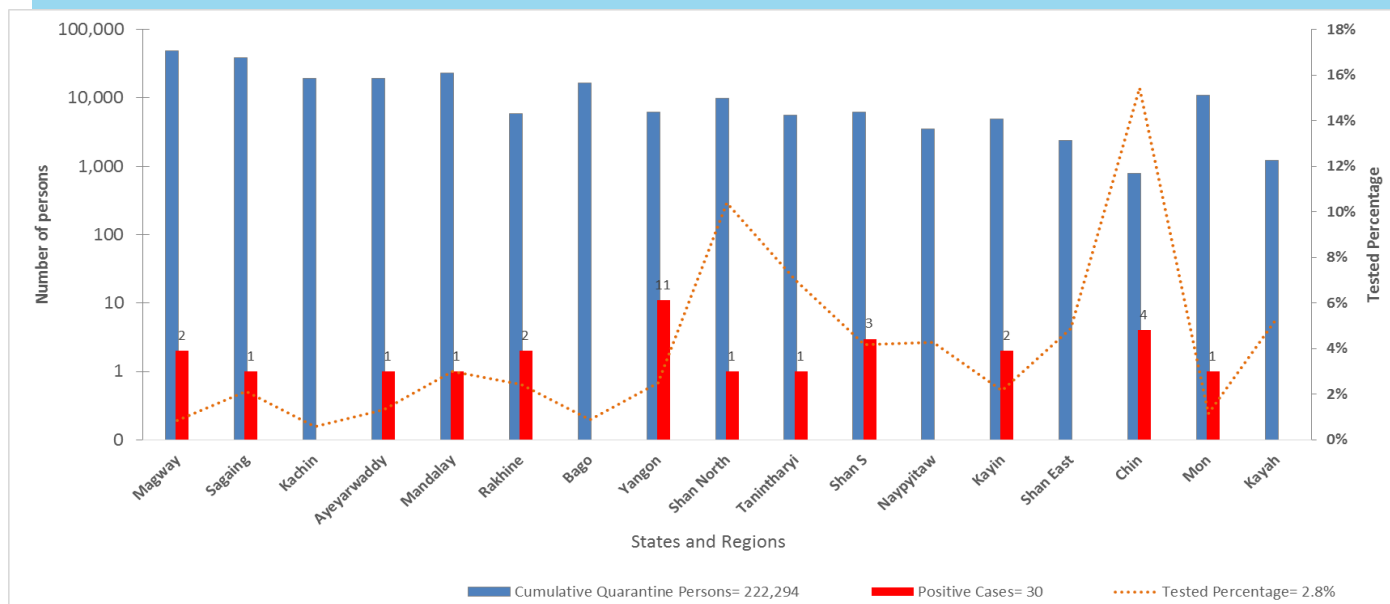
Person under Investigation (PUI) by State/Region hospitals (31.1.2020 – 23.5.2020) n= 4,646

No. of Facility Quarantine sites and Quarantined people on 23.5.2020

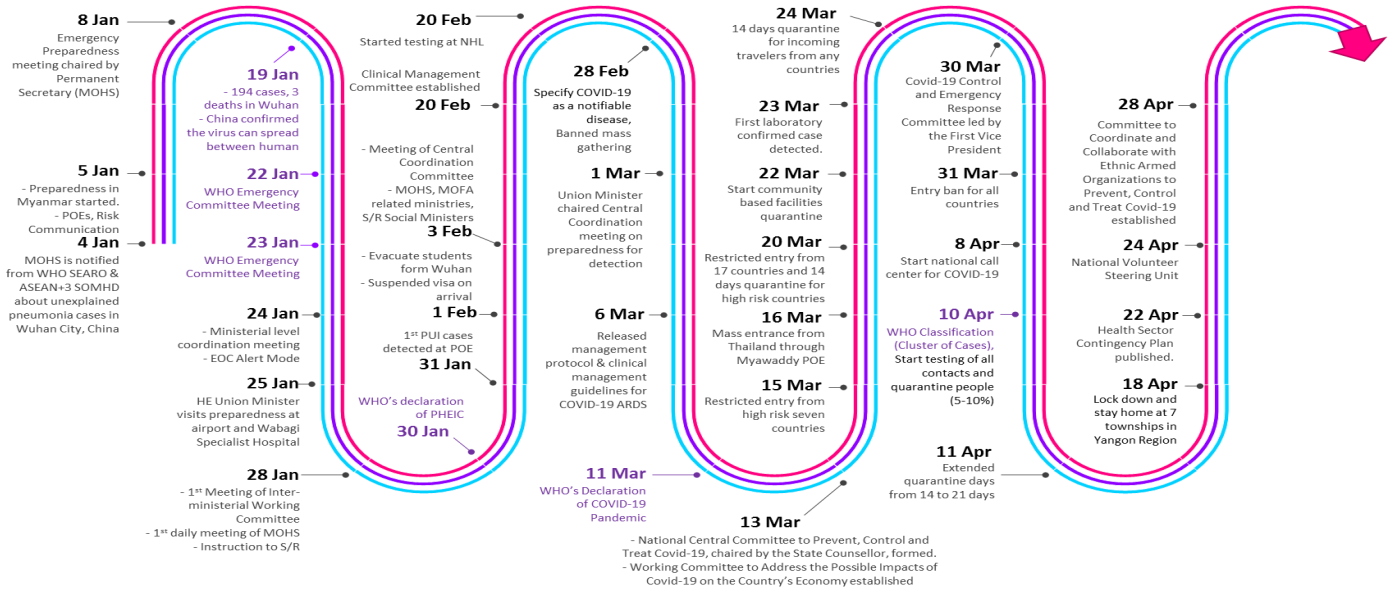
No.	State/Region	PUI
1.	Yangon	2,411
2.	Mandalay	811
3.	Shan (N)	179
4.	Bago	168
5.	Mon	159
6.	Magway	153
7.	Kayin	149
8.	Shan (E)	94
9.	Ayeyarwaddy	92
10.	Shan (S)	81
11.	Sagaing	74
12.	Kayah	67
13.	Naypyitaw	60
14.	Rakhine	53
15.	Tanintharyi	50
16.	Kachin	26
17.	Chin	19
Total		4,646

No.	State/Region	No. of facilities	Total no. of quarantine people
1.	Magway	2,871	11,596
2.	Sagaing	2,105	9,056
3.	Mandalay	622	6,574
4.	Kachin	1,543	5,667
5.	Ayeyarwaddy	1,226	4,782
6.	Rakhine	781	4,758
7.	Bago	507	3,449
8.	Shan (N)	351	2,750
9.	Yangon	57	2,743
10.	Tanintharyi	189	1,346
11.	Shan(S)	114	1,197
12.	Naypyitaw	19	1,117
13.	Kayin	172	719
14.	Shan (E)	41	630
15.	Chin	32	385
16.	Mon	44	376
17.	Kayah	18	180
Total		10,692	57,325

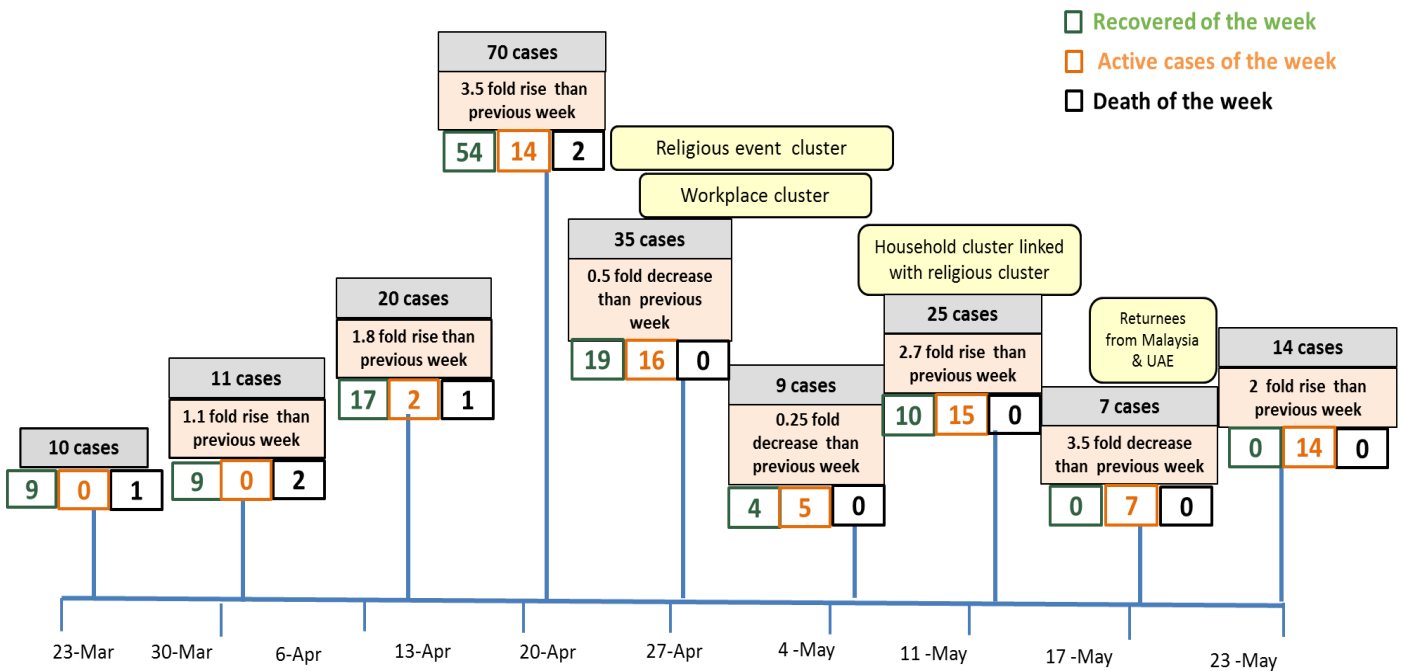
Cumulative quarantined people and laboratory testing status by States/Regions (as of 23.5.2020)



Timeline of Preparedness and Response to COVID-19 in Myanmar (as of 23.5.2020)



Summary of new confirmed cases detection after first two cases (as of 23.5.2020)



- Confirmed cases were detected as peak in the 4th week after first confirmed cases due to religious event cluster .
- Confirmed cases were decreased but still raised than the first 3 weeks due to religious event cluster and workplace cluster.
- There were an increased in numbers of cases in week 7th after the first two cases due to household cluster linked with religious cluster.
- Confirmed cases were detected again in week 8 after the first two cases because of returnees .

Hotline Number— 0673420268

Data source - CEU, DMS, NHL, DMR, States and Regions Health Department