



Ministry of Health and Sports (Myanmar)

Department of Public Health

Central Epidemiology Unit

(10 August 2020)

Coronavirus Disease 2019 (COVID-19)

Situation Report - 125

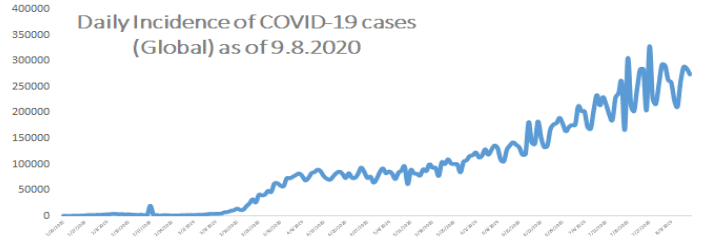
Data as reported by States and Regions by 7:00 PM MST 9 August 2020

Global Situation (WHO situation report - 202) data as of 14:30 MST 9 August 2020

Confirmed cases
19,462,112

Deaths
722,285

Case Fatality Rate
3.7 %



Myanmar Situation

Total Tested

126,828

Confirmed Cases

360

Negative

126,468

Recovered

312

86.6% of Confirmed cases

Active

42

11.6% of Confirmed cases

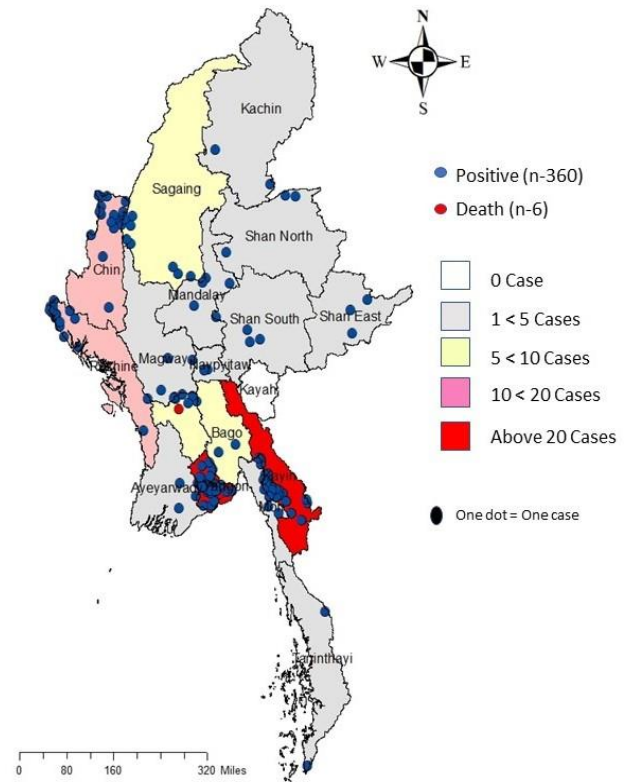
Death

6

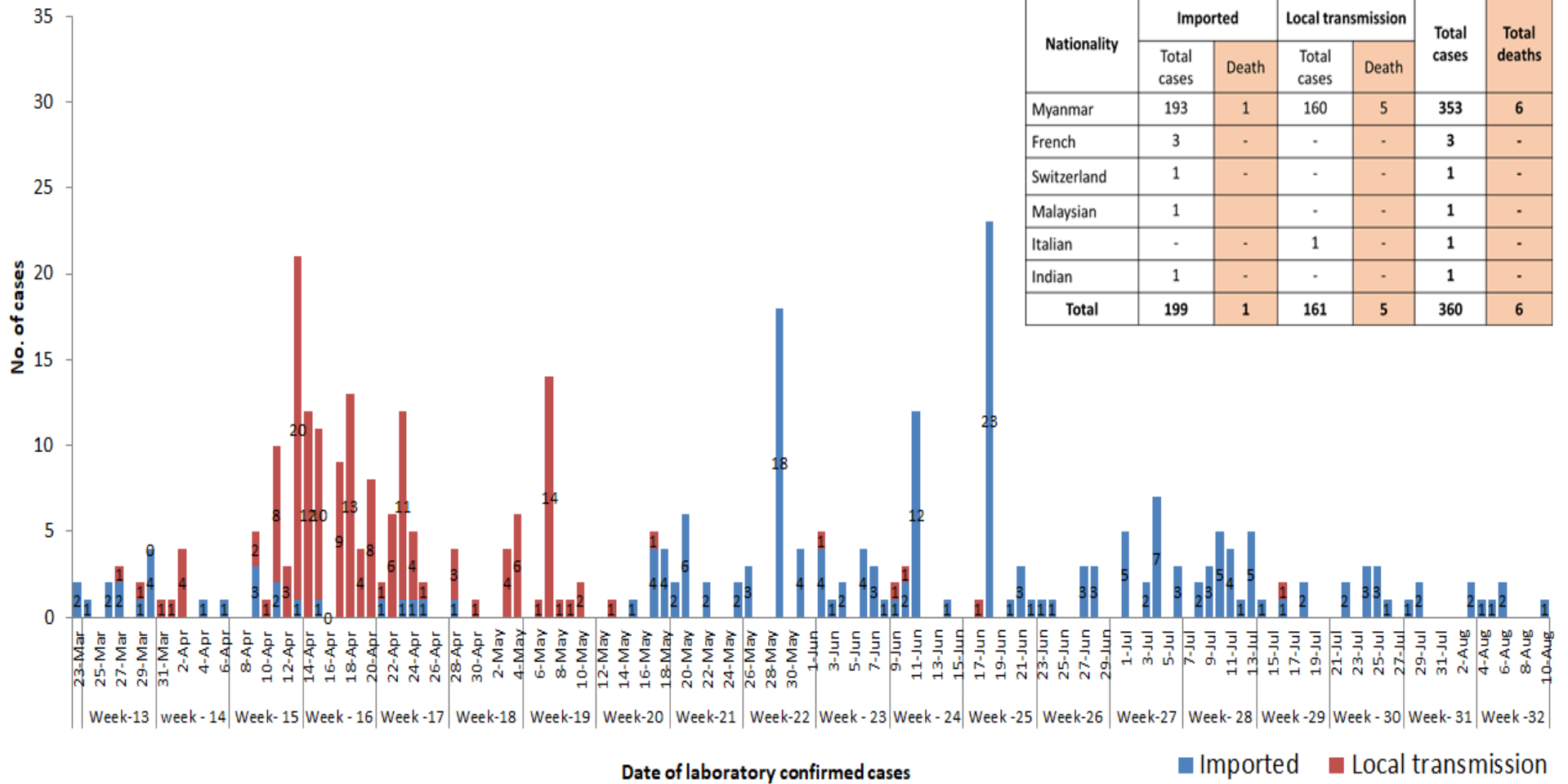
1.7% of Confirmed cases

No	State/Region	COVID –19 Confirmed case	Recovered	Deaths
1	Yangon	253(1 New)	216	5
2	Kayin	29	26	-
3	Chin	17	11	-
4	Rakhine	16	16	-
5	Sagaing	9	9	-
6	Bago	9	8	1
7	Shan (South)	4	4	-
8	Mandalay	4	4	-
9	Shan (East)	3	3	-
10	Shan (North)	3	3	-
11	Magway	3	3	-
12	Naypyitaw	2	2	-
13	Ayeyarwaddy	2	2	-
14	Kachin	2	2	-
15	Mon	2	2	-
16	Thanintharyi	2	1	-
17	Kayah	-	-	-
Total		360(1 New)	312	6

Map showing COVID-19 laboratory confirmed cases

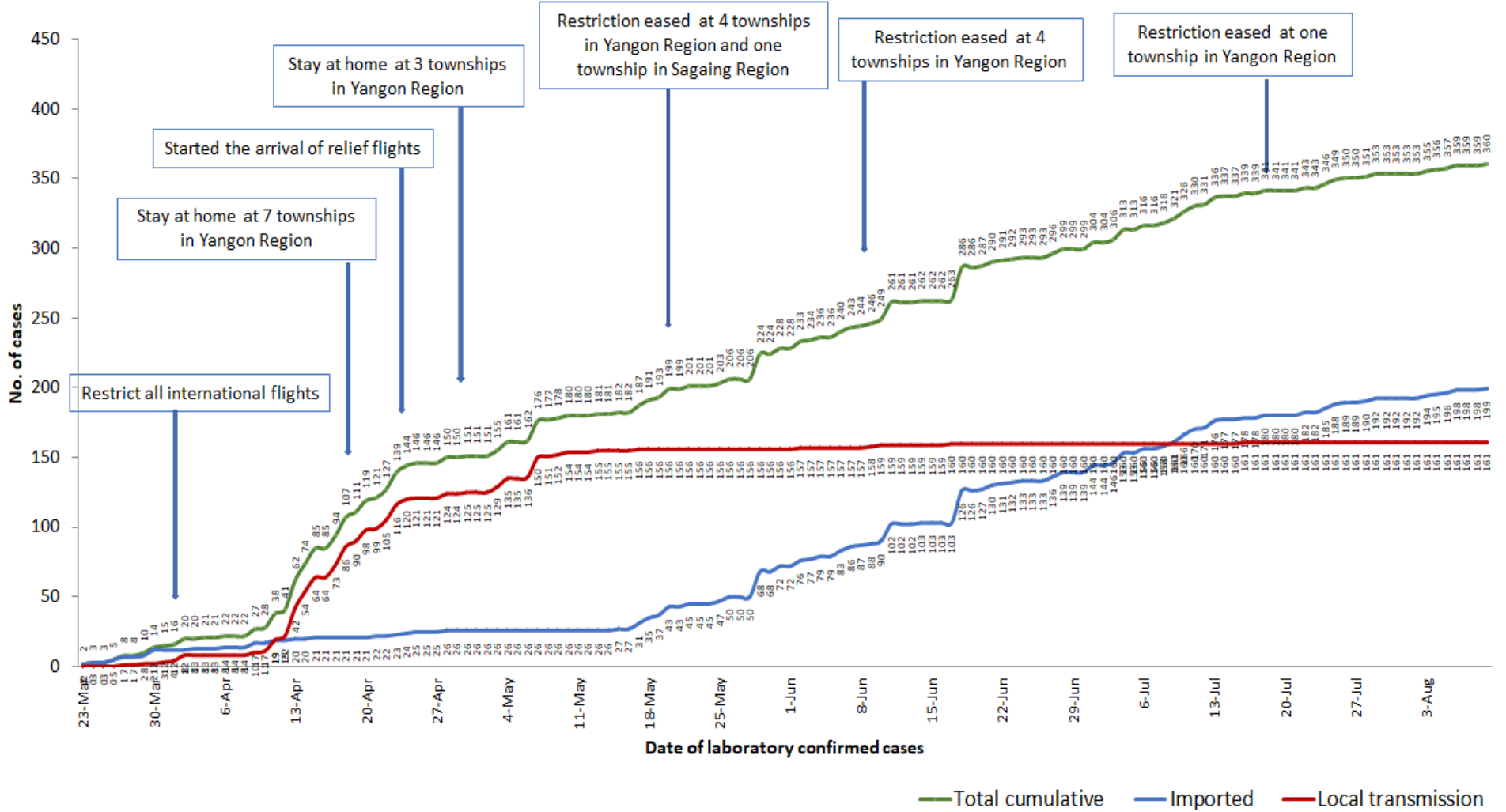


COVID-19 confirmed cases by types of transmissions (as of 9.8.2020, 7:00 pm) n=360



Nationality	Imported		Local transmission		Total cases	Total deaths
	Total cases	Death	Total cases	Death		
Myanmar	193	1	160	5	353	6
French	3	-	-	-	3	-
Switzerland	1	-	-	-	1	-
Malaysian	1	-	-	-	1	-
Italian	-	-	1	-	1	-
Indian	1	-	-	-	1	-
Total	199	1	161	5	360	6

Total laboratory confirmed cases by date (as of 9.8.2020, 7:00 pm), n= 360



Stay at home at 3 townships in Yangon Region

Restriction eased at 4 townships in Yangon Region and one township in Sagaing Region

Restriction eased at 4 townships in Yangon Region

Restriction eased at one township in Yangon Region

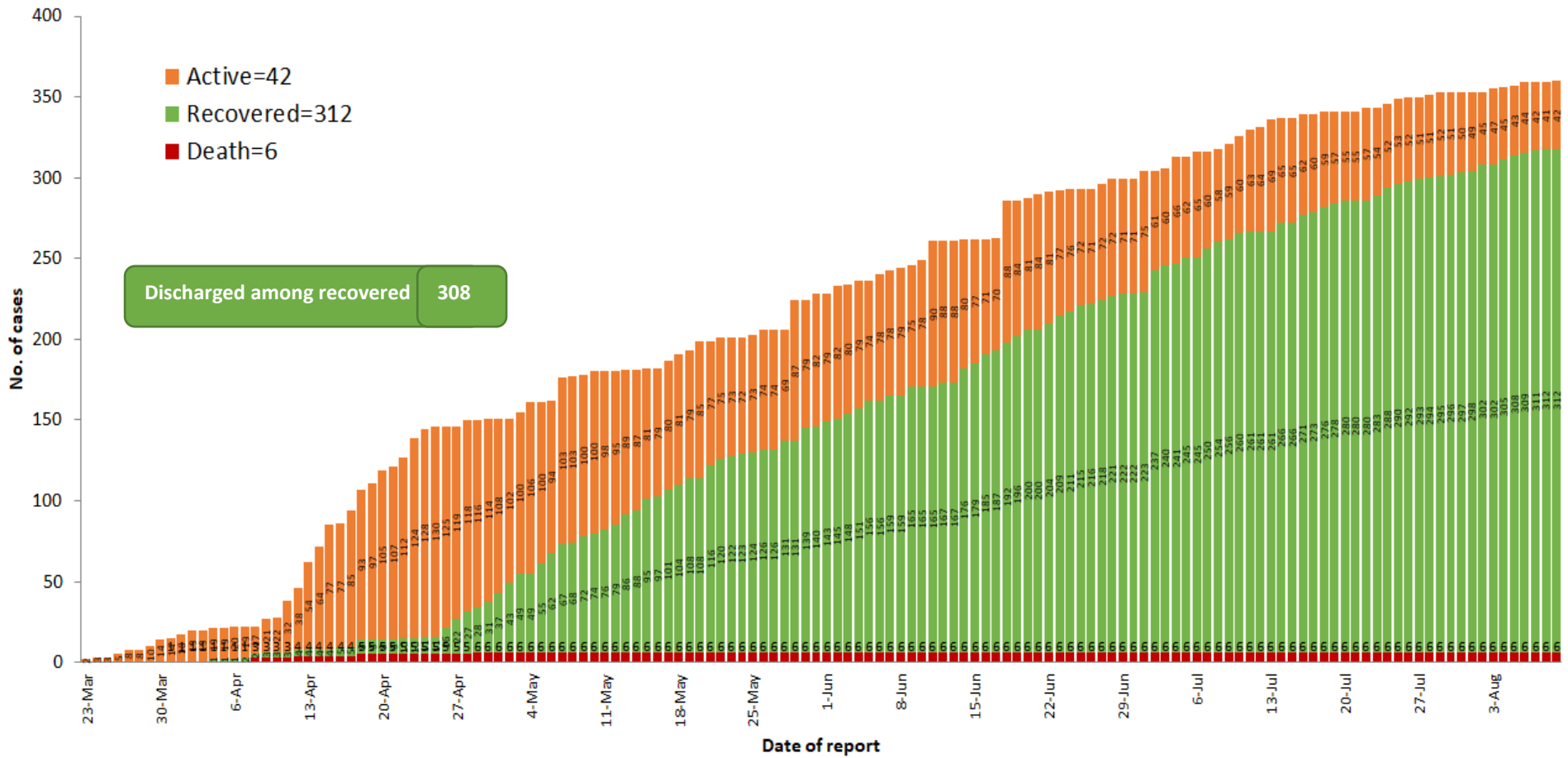
Started the arrival of relief flights

Stay at home at 7 townships in Yangon Region

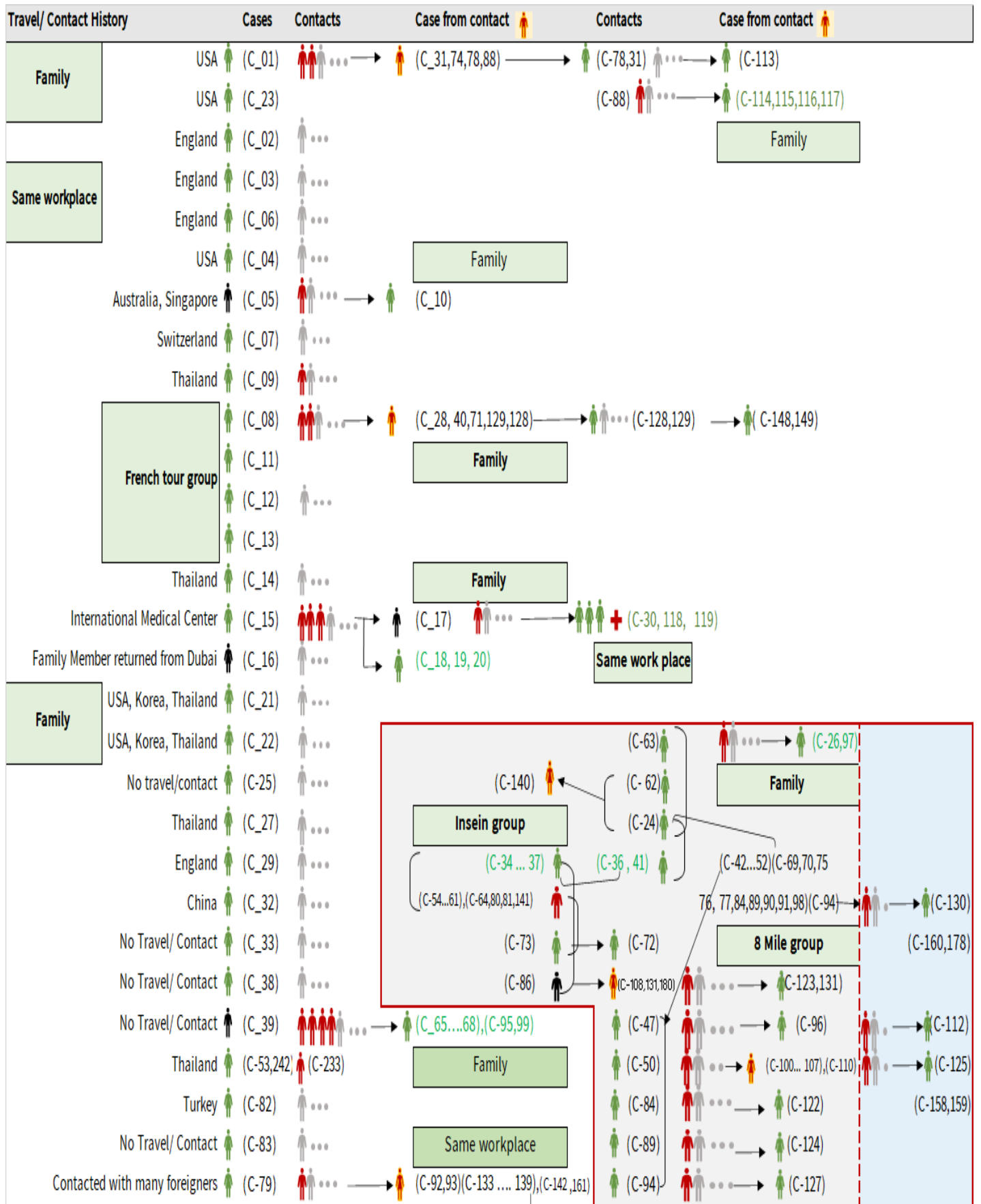
Restrict all international flights

— Total cumulative — Imported — Local transmission

Cumulative Number of active confirmed cases, recovered and deaths (23.3.2020 – 9.8.2020), n (cumulative)=360



Summary of COVID-19 confirmed cases (as of 9.8.2020), n (contacts)= 5,789



Summary of COVID-19 confirmed cases (as of 9.8.2020), n (contacts)= 5,789

Travel/ Contact History	Cases	Contacts	Case from contact	Contacts	Case from contact
No Travel/ Contact	(C-85)	...			(C-110)
No travel / Contact	(C-87)	...	(C-126)		(C-28,40,42,43,44,45,46,48,49,51,52)
No travel / Contact	(C-109)	...	(C-139)	(C-146)	(C-54,55,56,57,58,60,61,63,64,69,70)
No travel / Contact	(C-111)	...	(C-133,134,142)	(C-147)	(C-71,74,75,76,77,80,81,88,90,91,92,93)
No travel/Contact	(C- 120)	...			(C-98,100,101,102,103,104,105,106,107,108)
England	(C-327,121,302,303,317)				(C- 133,134,135,136,137,138,139,140,141,142)
No travel/Contact	(C-132)	...			(C-151,152,153,154,157,158,159,160,161)
Dubai/Thailand	(C-143)	...			(C-164,165,167,168,170,171,172,174)
No travel/Contact	(C-144)	...			(C-178,184,189,191,193,205,207,216,217,218)
India	(C- 145,204,208,209,210,211,212,213,215,220,221,223,224,229,225,227,228,252,255,259,296,299,3				(C-226,233,234,235,237,246,253,258,306,318)
China	(C-150,230)				
Contact with religious event cluster	(C- 162)	...	(C-151,152,153,154,157)	(C-165 ... 177)	(C-166,169,173,175,176,177)
No travel/contact	(C-155)	...	(C-163,164)	(C-177)	(C-179)
No travel/contact	(C-156)	...			
No travel/contact	(C- 183)	...			
Malaysia	(C-184,189,273,280,351,353)		(C-182,185,186,191,188,190,187,200,201,232,275,282)		
UAE	(C-301,315,316,337)		(C-193,192,194,195,196,197,198,199,300,301,314,340)		
Italy	(C-243,202)				
No travel/Contact	(C- 231)				
Bangladesh	(C-234,244,247,250,262,309,310,334)		(C-244,245,247,248,250,262,291,292,293,308,325,326,348)		
No travel/contact	(C-245)	...			
No travel/contact	(C-249)				
No travel/contact	(C-263)	...			
Thailand	(C-332,333,335,346,349,352)		(C-264,265,266,267,268,269,270,271,272,273,274,276,277,278,279,280,281,283,284,285,286,287,294,304,312,336,338)		
Quata	(C-288,354,355)		(C-289,290)		
India	(C-205.....214,216...219,222.... 229,....241,246,253....258,260,261,295,297,298,307,322,323,324,344,345,357,358,359)		(C-203,240,251,254,328,329,3		
Lao	(C-311)	...			
Singapore	(C-313)	...			
Philippines	(C-319,321)		(C-320,342,343)		
USA	(C-347)		(C-331,350,360)		
No travel/contact	(C-339)	...			
Sudan	(C-356)				

Summary of current situation

Type	New (8.8.2020-9.8.2020)	Total (on 9.8.2020)
Suspected and Person Under Investigation (PUI)	9	123
Hospital Quarantine	2	29
Facility Quarantine	1,459	19,566

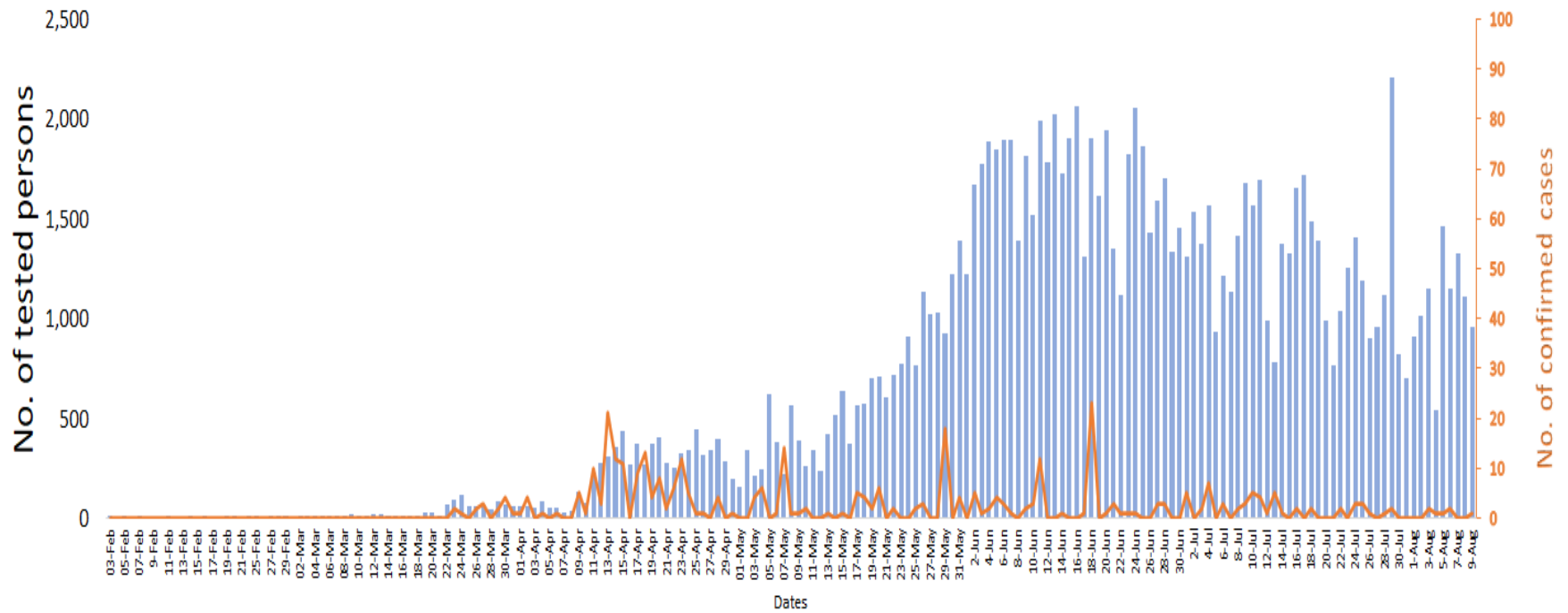
Person under Investigation (PUI) by State/Region hospitals (31.1.2020 – 9.8.2020) n= 6,955

No.	State/Region	PUI
1	Yangon	3469
2	Mandalay	1446
3	Kayin	318
4	Mon	285
5	Shan (N)	248
6	Magway	222
7	Bago	181
8	Shan (E)	127
9	Shan (S)	104
10	Ayeyarwaddy	102
11	Sagaing	90
12	Kayah	81
13	Thanintharyi	76
14	Rakhine	69
15	Naypyitaw	64
16	Kachin	43
17	Chin	30
Total		6,955

No. of Facility Quarantine sites and Quarantined people on 9.8.2020

No.	State/Region	No. of facilities	Total no. of quarantine
1	Yangon	60	3904
2	Mon	255	2768
3	Kayin	385	2559
4	Bago	192	2538
5	Tanintharyi	189	1625
6	Magway	407	1216
7	Mandalay	59	966
8	Sagaing	168	931
9	Rakhine	236	673
10	Ayeyarwaddy	150	623
11	Shan South	79	610
12	Kachin	111	485
13	Naypyitaw	2	316
14	Shan North	270	146
15	Kayah	18	95
16	Chin	19	64
17	Shan East	7	47
Total		2,607	19,566

COVID-19 confirmed cases among tested by date (as of 9.8.2020)

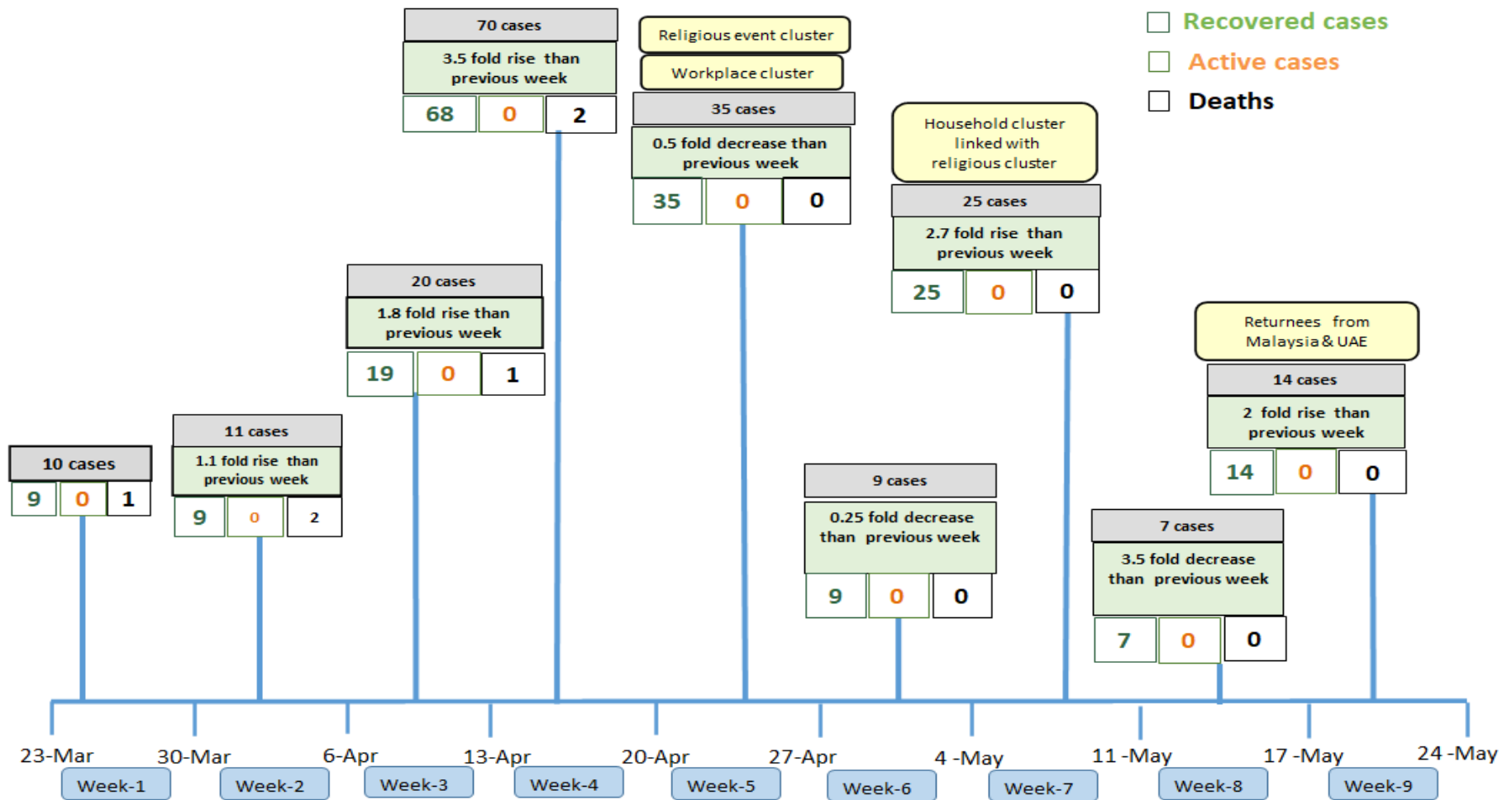


Total tested persons - 126,828

Total confirmed cases - 360

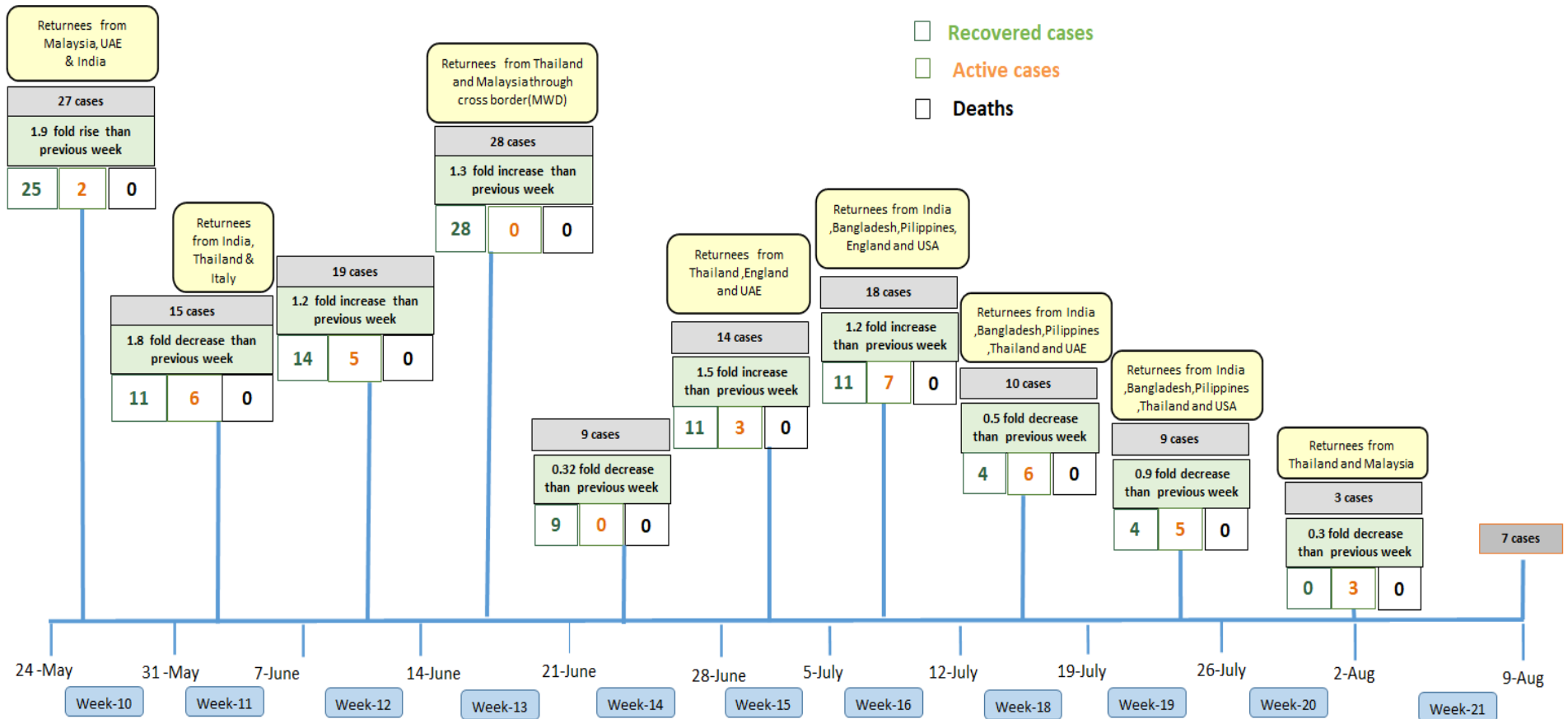
■ Tested person — Confirmed case

Summary of new confirmed cases detection after first two cases (as of 9.8.2020)



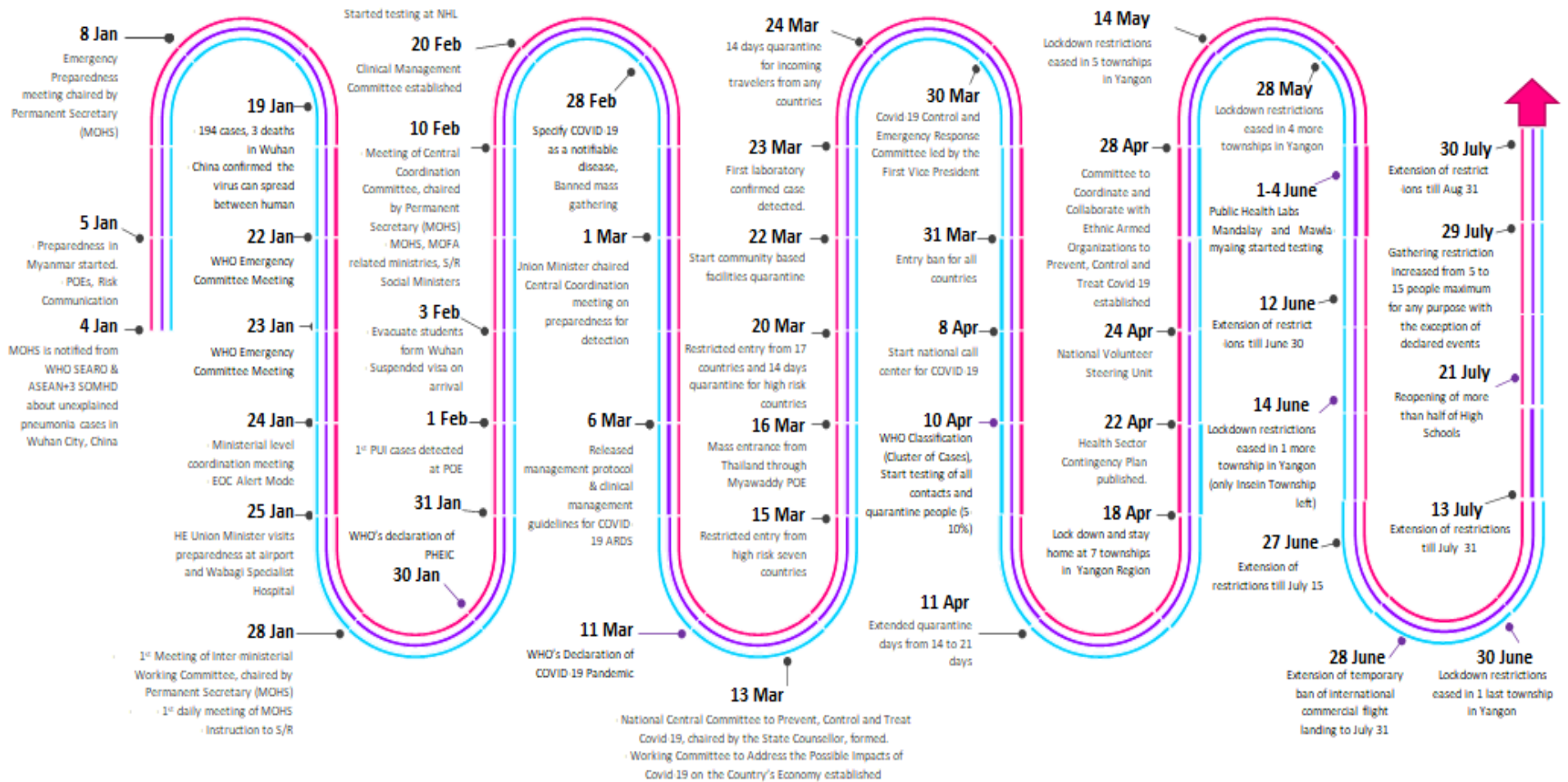
- Confirmed cases were detected as a peak in the 4th week after first confirmed cases due to the religious event cluster.
- Confirmed cases were decreased but still raised than the first 3 weeks due to the religious event cluster and workplace cluster.
- There were an increased in numbers of cases in the 7th week after the first two cases due to the household cluster linked with a religious cluster.
- Confirmed cases were detected by a nearly two-fold rise in the 9th and 10th weeks after the first two cases because of returnees coming back by relief flights.

Summary of new confirmed cases detection after first two cases (as of 9.8.2020)



- Confirmed cases were detected as a peak in the 4th week after first confirmed cases due to the religious event cluster.
- Confirmed cases were decreased but still raised than the first 3 weeks due to the religious event cluster and workplace cluster.
- There were an increased in numbers of cases in the 7th week after the first two cases due to the household cluster linked with a religious cluster.
- Confirmed cases were detected by a nearly two-fold rise in the 9th and 10th weeks after the first two cases because of returnees coming back by relief flights.

Timeline of Preparedness and Response to COVID-19 in Myanmar (as of 9.8.2020)



Hotline Number — 0673 420 268

Data source - CEU, DMS, NHL, PHL (MDY and MLM), DMR, DSGH, State and Region Health Departments