



Ministry of Health and Sports (Myanmar)

Department of Public Health

Central Epidemiology Unit

(10 July 2020)

Situation Report - 94

Coronavirus Disease 2019 (COVID-19)

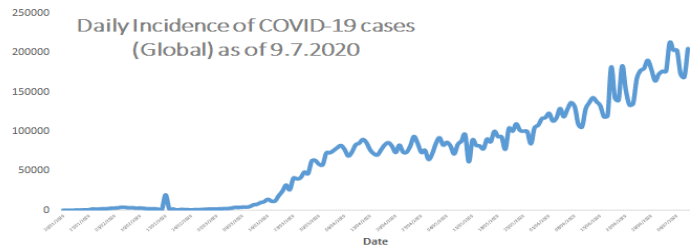
Data as reported by States and Regions by 9:30 PM MST 9 July 2020

Global Situation (WHO situation report - 171) data as of 14:30 MST 9 July 2020

Confirmed cases
11,874,226

Deaths
545,481

Case Fatality Rate
4.5 %



Myanmar Situation

Total Tested
89,913

Confirmed Cases
321

Negative
89,592

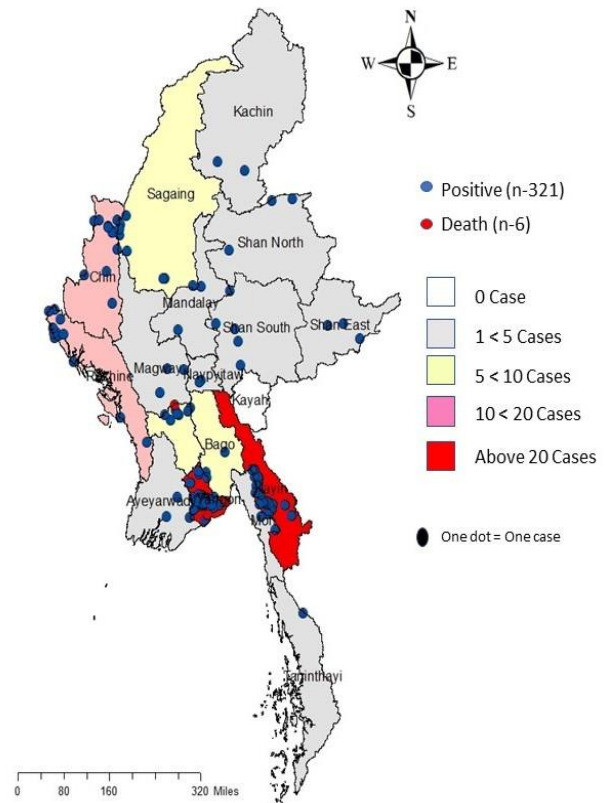
Recovered
256
79.7% of Confirmed cases

Active
59
18.3% of Confirmed cases

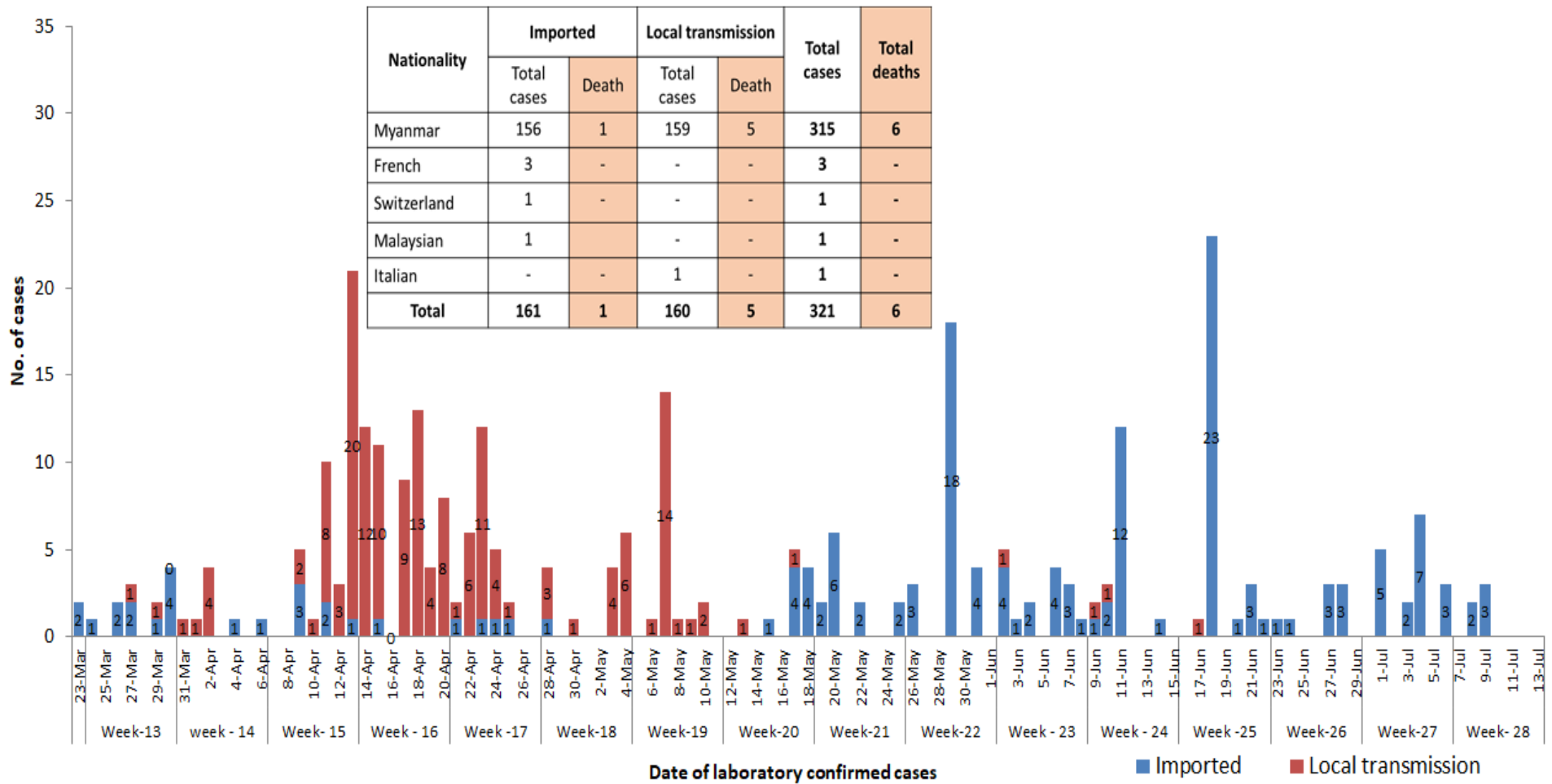
Death
6
1.8% of Confirmed cases

No	State/Region	COVID –19 Confirmed case	Recovered	Deaths
1	Yangon	229(3 New)	178	5
2	Kayin	26	20(1 New)	-
3	Rakhine	12	9(1 New)	-
4	Chin	11	10	-
5	Sagaing	9	8	-
6	Bago	9	7	1
7	Shan (South)	4	4	-
8	Mandalay	3	3	-
9	Shan (East)	3	4	-
10	Shan (North)	3	2	-
11	Magway	3	3	-
12	Naypyitaw	2	2	-
13	Ayeyarwaddy	2	2	-
14	Kachin	2	2	-
15	Mon	2	2	-
16	Thanintharyi	1	1	-
17	Kayah	-	-	-
Total		321(3 New)	256 (2 New)	6

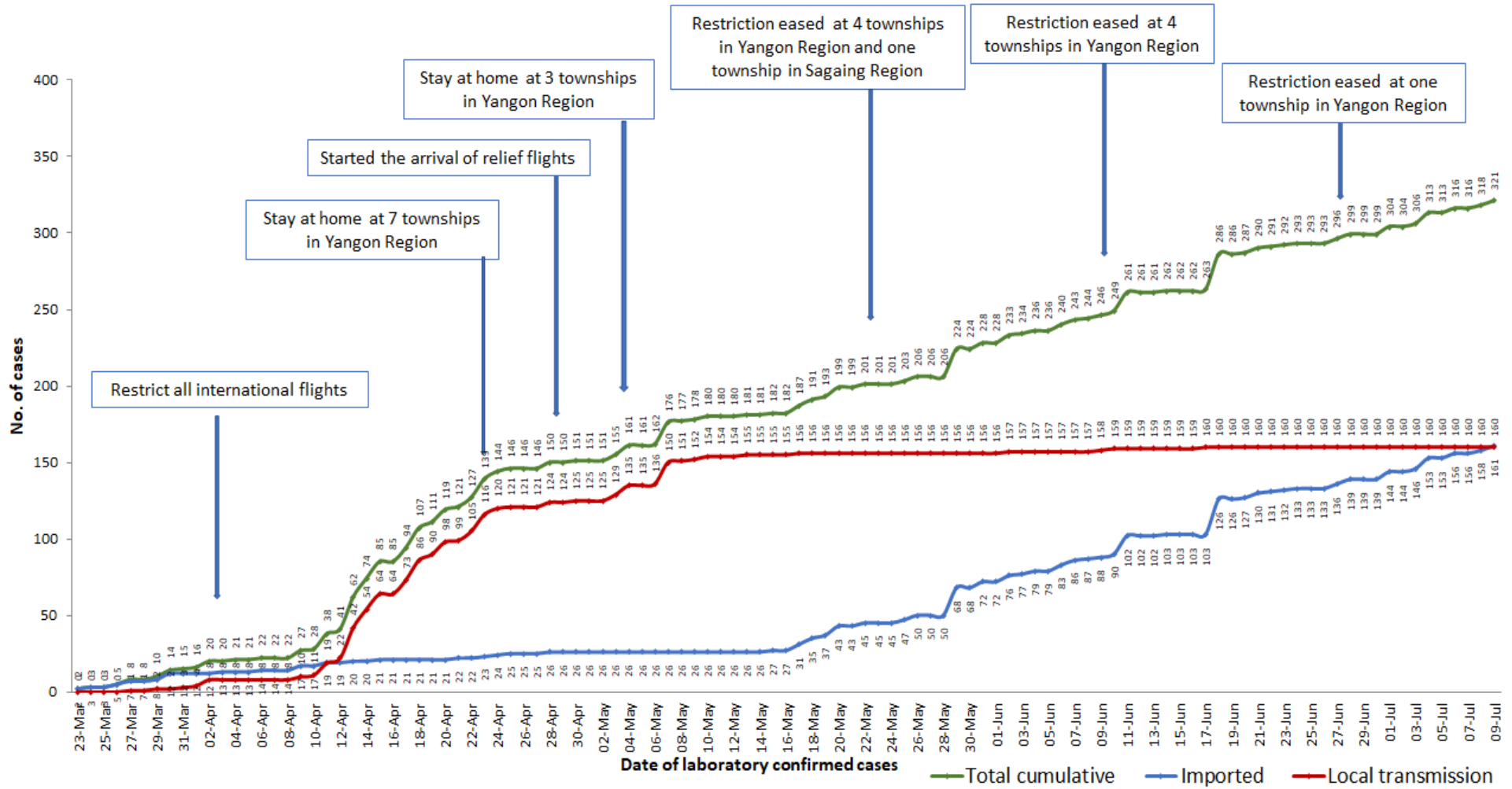
Map showing COVID-19 laboratory confirmed cases



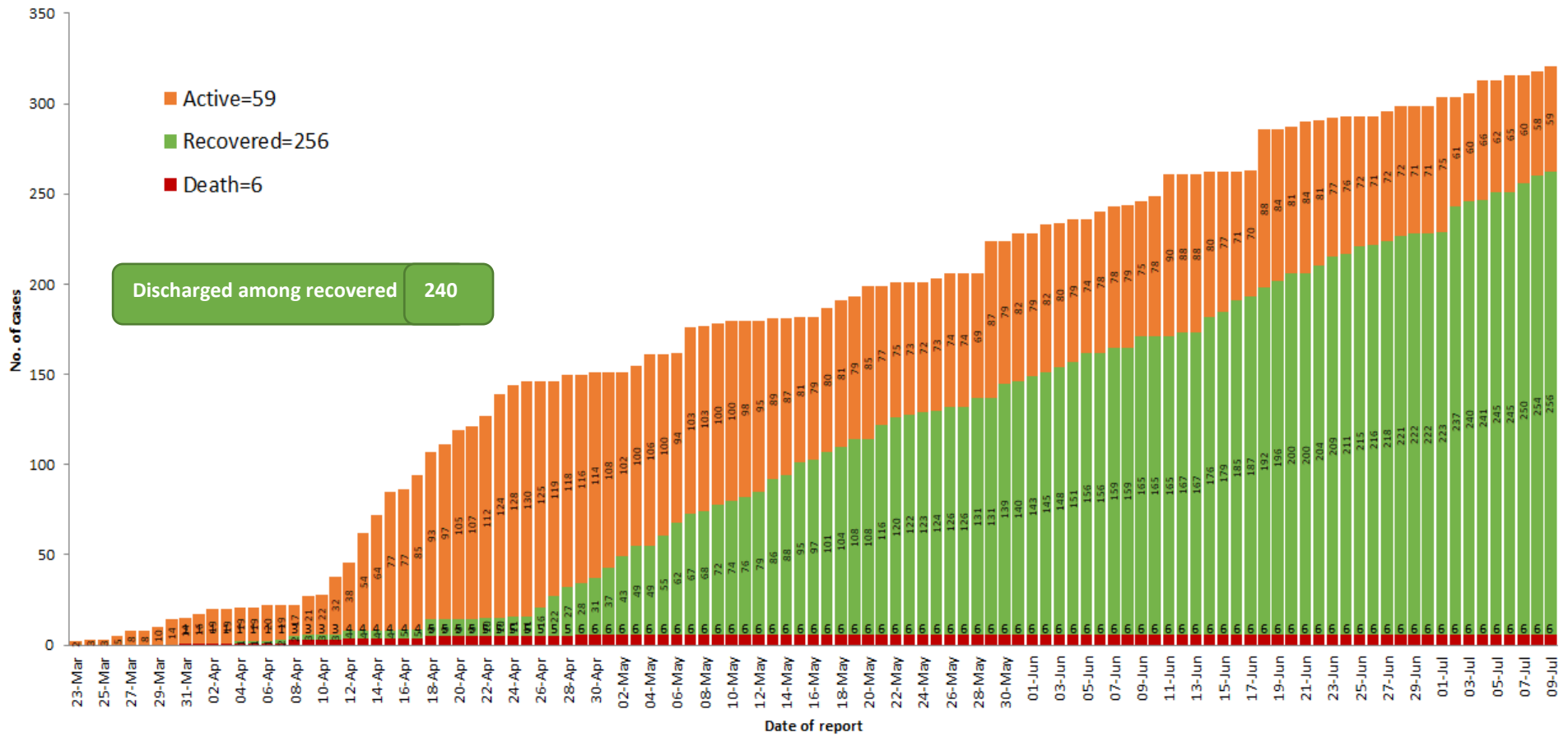
COVID-19 confirmed cases by types of transmissions (as of 9.7.2020, 9:30 pm) n=321



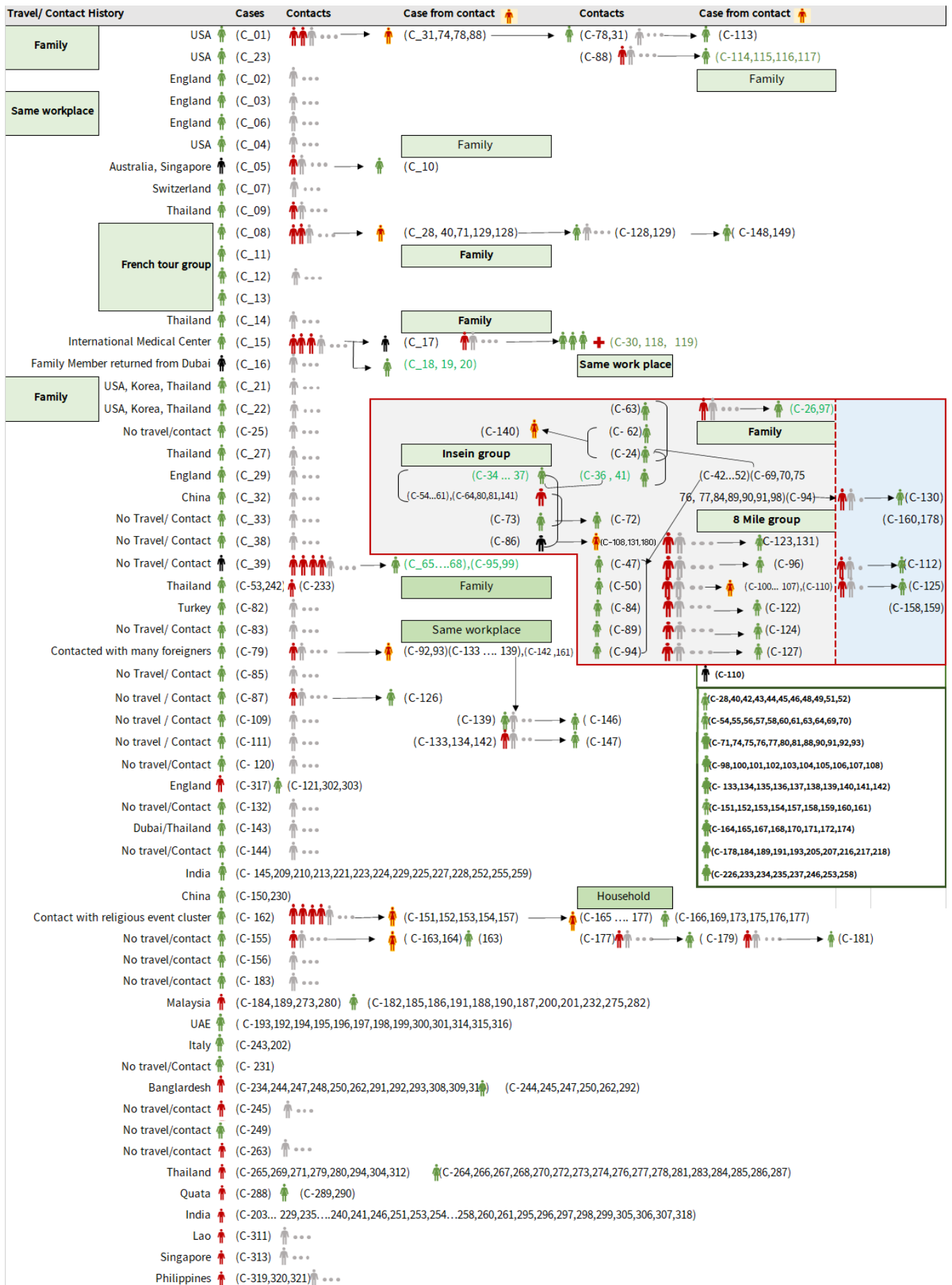
Total laboratory confirmed cases by date (as of 9.7.2020, 9:30 pm), n= 321



Cumulative Number of active confirmed cases, recovered and deaths (23.3.2020 – 9.7.2020), n (cumulative)=321



Summary of COVID-19 confirmed cases (as of 9.7.2020), n (contacts)= 5,695



Summary of current situation		
Type	New (8.7.2020-9.7.2020)	Total (on 9.7.2020)
Suspected and Person Under Investigation (PUI)	41	223
Hospital Quarantine	2	55
Facility Quarantine	1,515	24,284

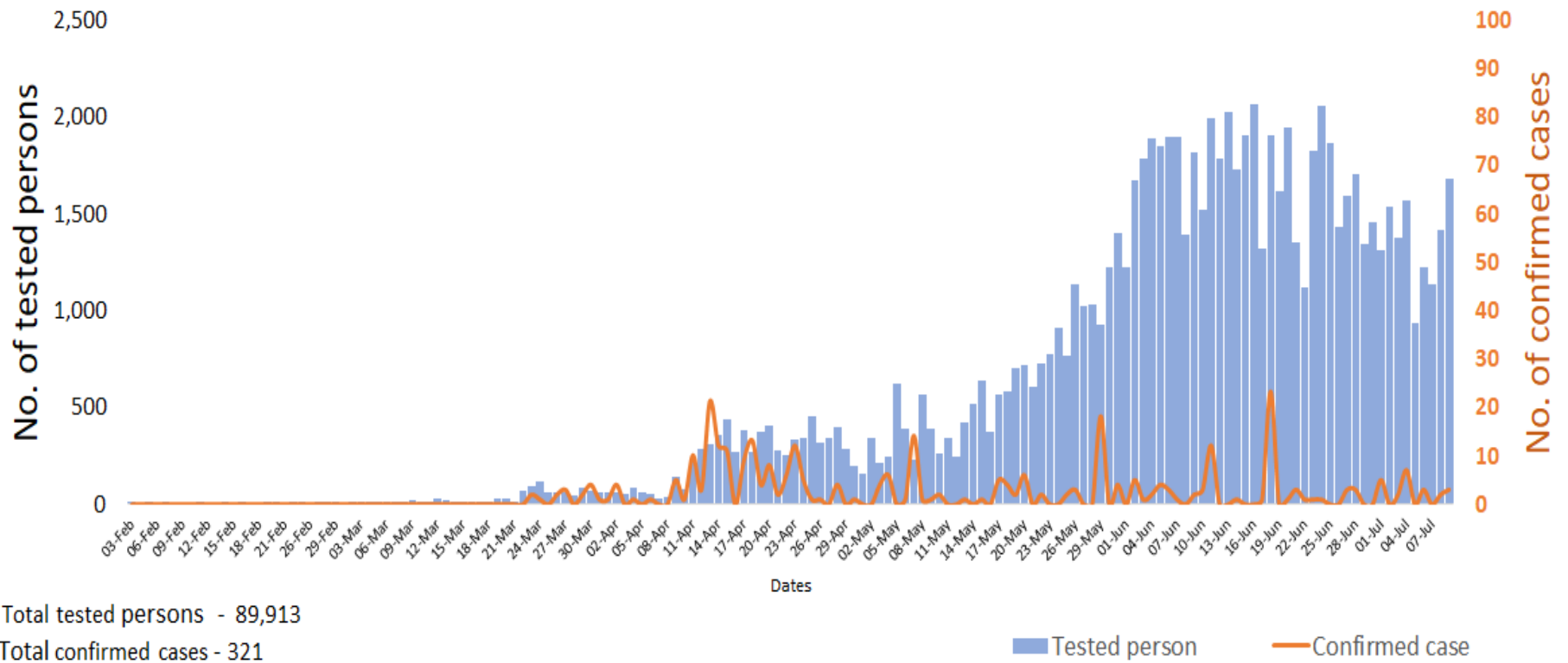
Person under Investigation (PUI) by State/Region hospitals (31.1.2020 – 9.7.2020) n= 6,274

No.	State/Region	PUI
1	Yangon	3,186
2	Mandalay	1,250
3	Kayin	252
4	Mon	236
5	Shan (N)	214
6	Magway	205
7	Bago	180
8	Shan (E)	120
9	Ayeyarwaddy	102
10	Shan (S)	99
11	Sagaing	89
12	Kayah	80
13	Rakhine	68
14	Thanintharyi	67
15	Naypyitaw	63
16	Kachin	36
17	Chin	27
Total		6,274

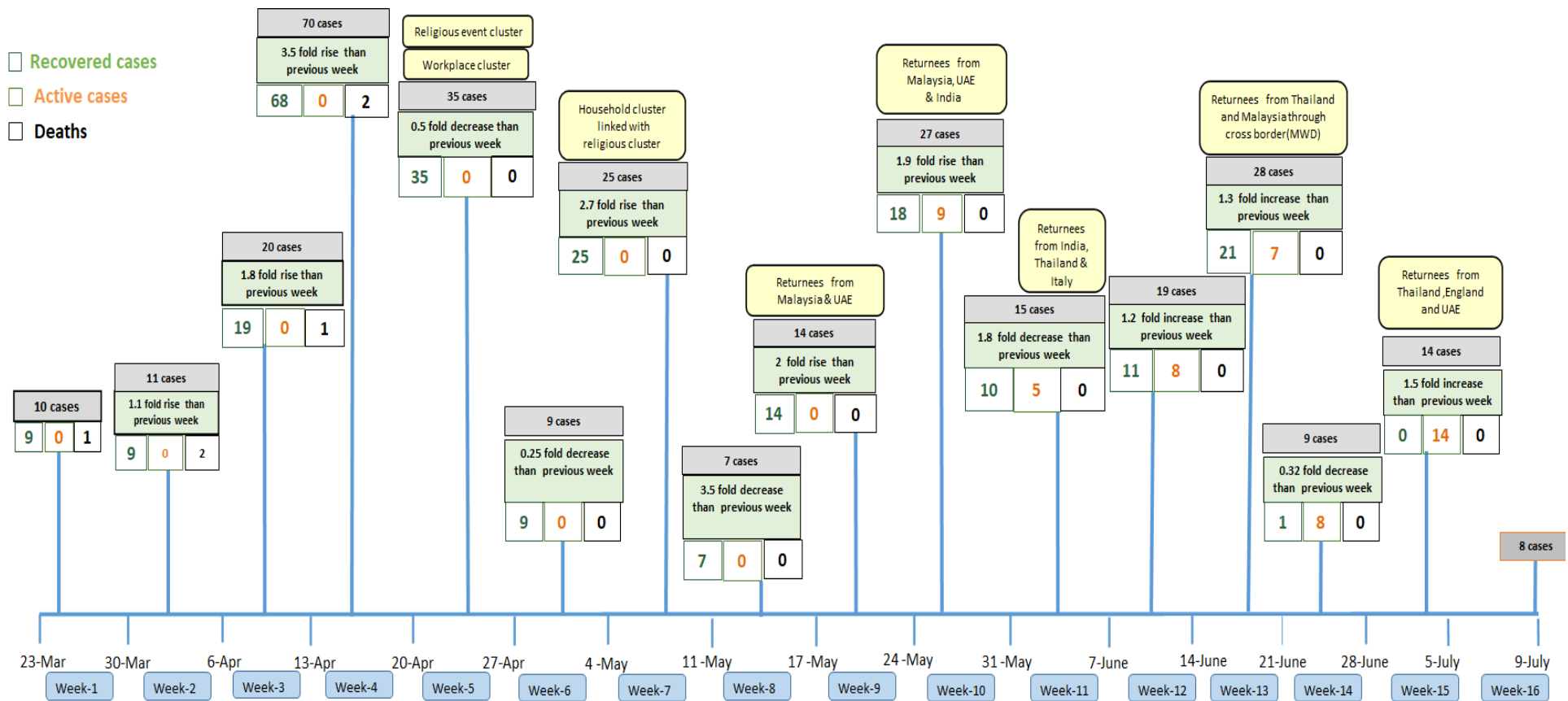
No. of Facility Quarantine sites and Quarantined people on 9.7.2020

No.	State/Region	No. of facilities	Total no. of quarantine
1	Yangon	68	4,509
2	Bago	284	3,478
3	Mon	256	2,687
4	Kayin	372	2,673
5	Magway	2,571	2,138
6	Mandalay	112	1,347
7	Sagaing	969	1,221
8	Tanintharyi	189	1,184
9	Kachin	418	1,150
10	Rakhine	278	1,004
11	Ayeyarwaddy	180	896
12	Shan South	117	890
13	Naypyitaw	2	497
14	Shan North	318	213
15	Chin	17	165
16	Shan East	11	121
17	Kayah	18	111
Total		6,180	24,284

COVID-19 confirmed cases among tested by date (as of 9.7.2020)

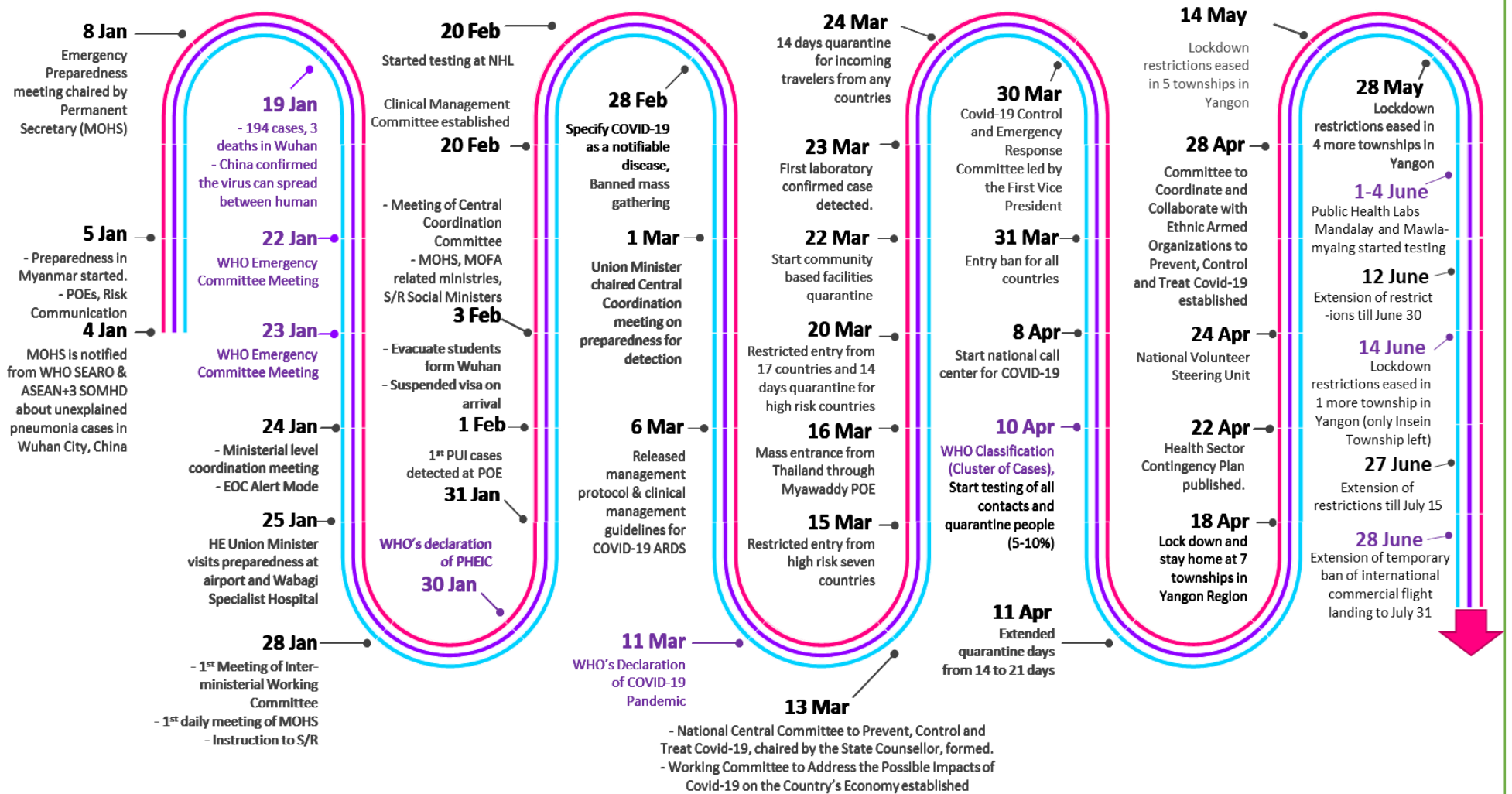


Summary of new confirmed cases detection after first two cases (as of 9.7.2020)



- Confirmed cases were detected as a peak in the 4th week after first confirmed cases due to the religious event cluster.
- Confirmed cases were decreased but still raised than the first 3 weeks due to the religious event cluster and workplace cluster.
- There were an increased in numbers of cases in the 7th week after the first two cases due to the household cluster linked with a religious cluster.
- Confirmed cases were detected by a nearly two-fold rise in the 9th and 10th weeks after the first two cases because of returnees coming back by relief flights.

Timeline of Preparedness and Response to COVID-19 in Myanmar (as of 9.7.2020)



Hotline Number— 0673 420 268

Data source - CEU, DMS, NHL, PHL (MDY and MLM), DMR, DSGH, State and Region Health Departments