



Ministry of Health and Sports (Myanmar)

Department of Public Health

Central Epidemiology Unit

(21 June 2020)

Coronavirus Disease 2019 (COVID-19)

Situation Report - 75

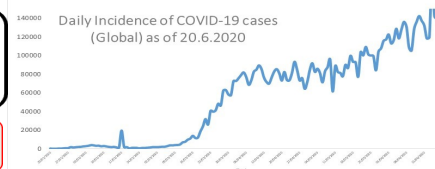
Data as reported by States and Regions by 00:30 AM MST 21 June 2020

Global Situation
(WHO situation report - 152)
data as of 14:30 MST 20 June 2020

Confirmed cases
8,525,042

Deaths
456,973

Case Fatality Rate
5.3 %



Myanmar Situation

Total tested
62,070

Confirmed cases
287

Negative
61,783

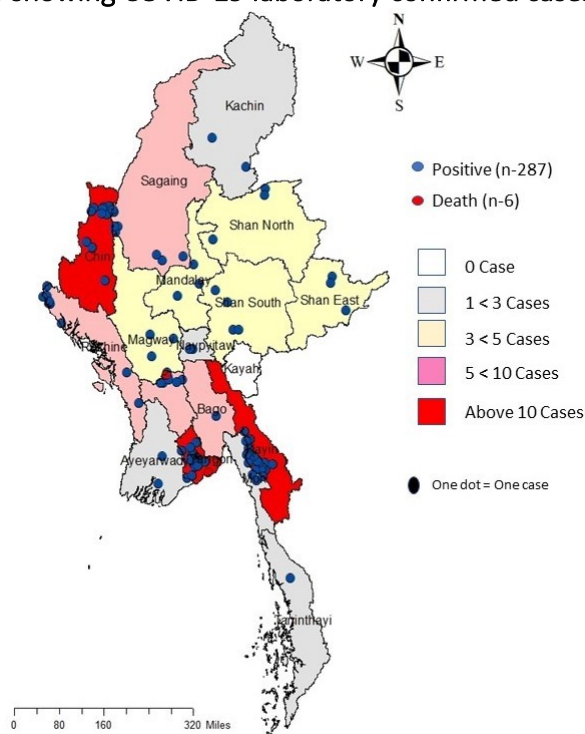
Recovered
200
69.6 % of confirmed cases

Active
81
28.2% of confirmed cases

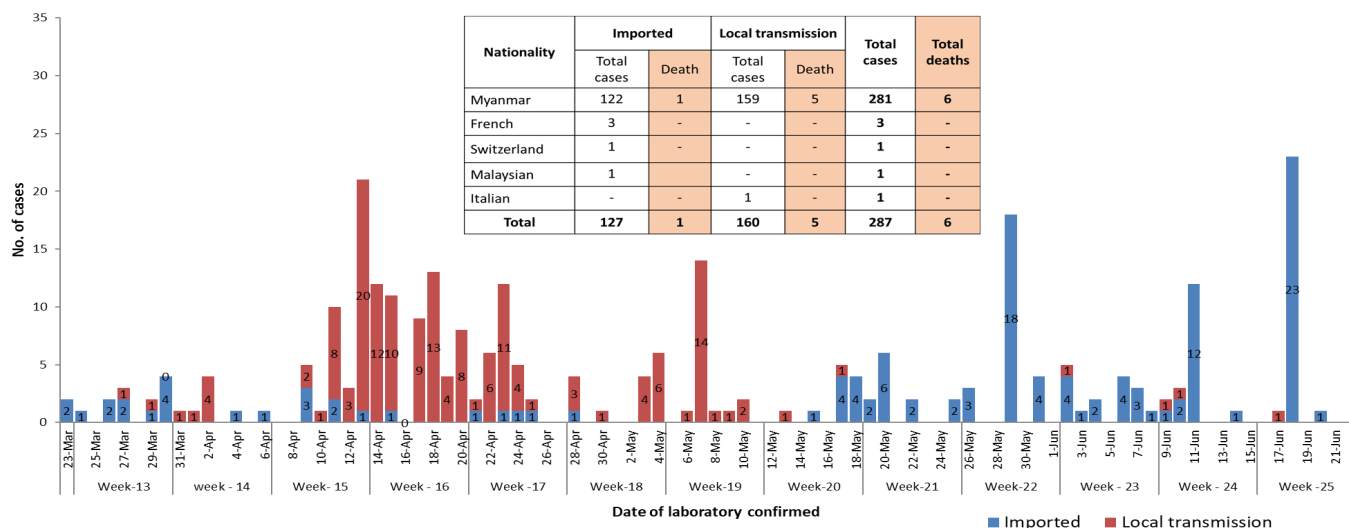
Death
6
2.1% of confirmed cases

No.	State/Region	COVID-19 Confirmed case	Recovered	Deaths
1	Yangon	201	157 (4 New)	5
2	Kayin	25	1	-
3	Chin	10	6	-
4	Sagaing	9	7	-
5	Rakhine	9	2	-
6	Bago	8	7	1
7	Shan(South)	4	2	-
8	Mandalay	3	3	-
9	Shan(East)	3	4	-
10	Shan(North)	3	2	-
11	Magway	3	2	-
12	Naypyitaw	2	2	-
13	Ayeyarwaddy	2	2	-
14	Kachin	2	1	-
15	Mon	2 (1 New)	1	-
16	Thanintharyi	1	1	-
17	Kayah	-	-	-
Total		287	200(4 New)	6

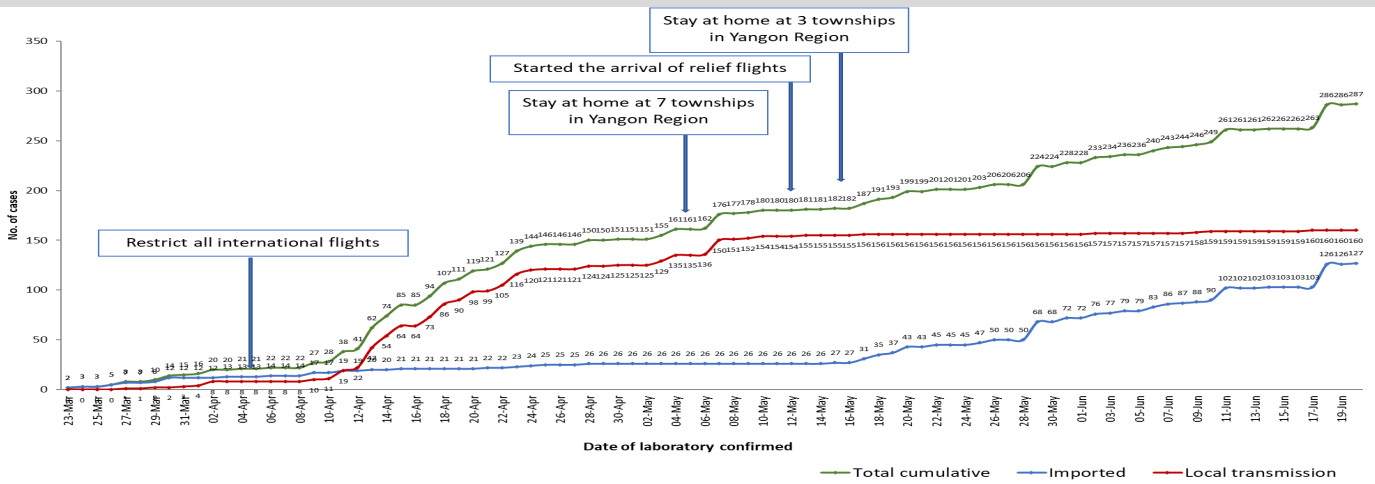
Map showing COVID-19 laboratory confirmed cases



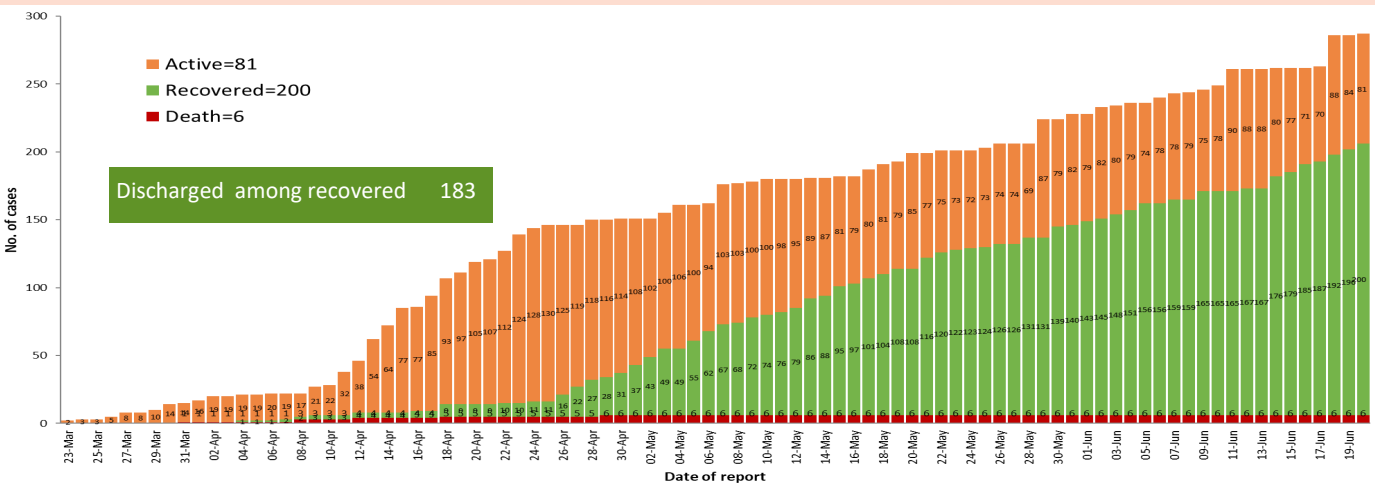
COVID-19 confirmed cases by types of transmissions (as of 21-6-2020, 00:30 am) n=287



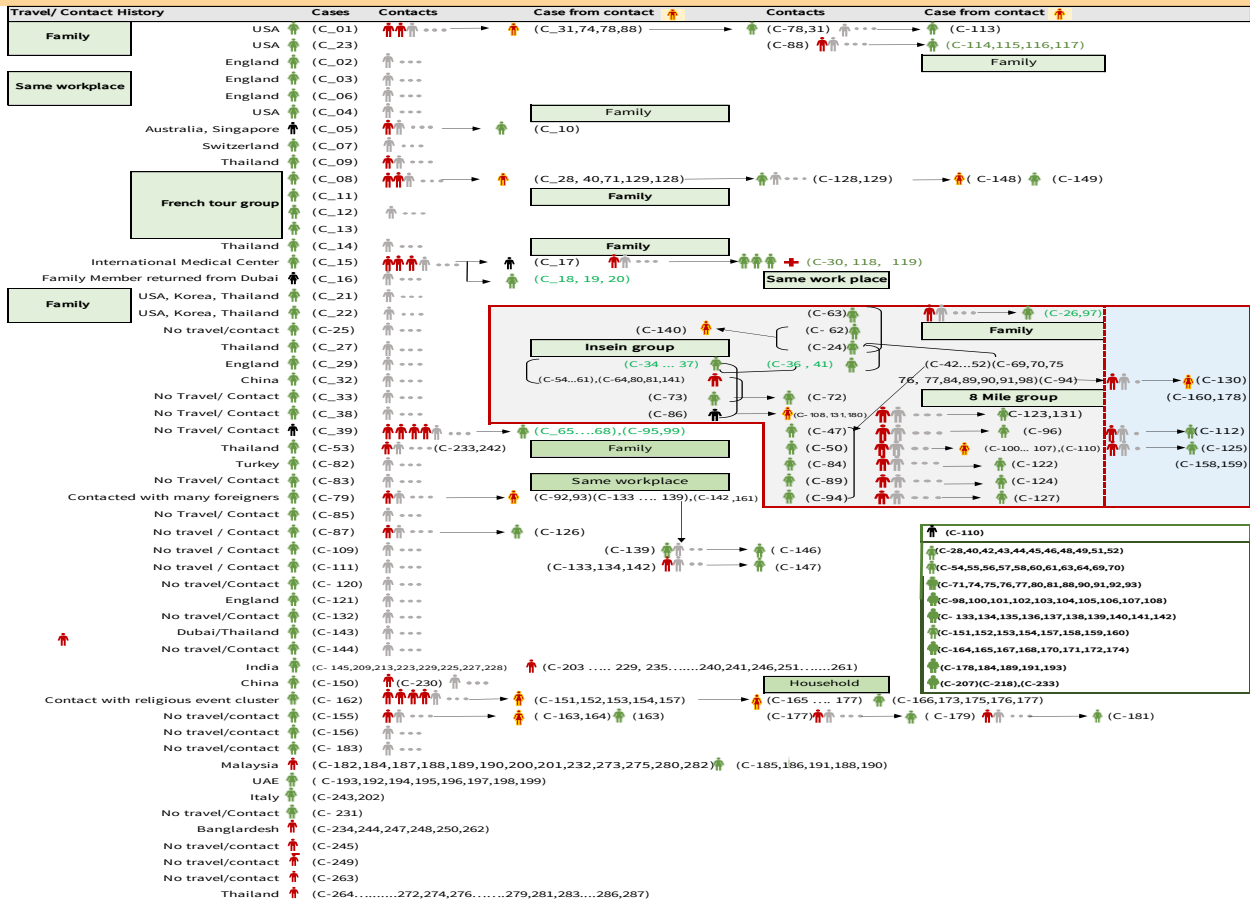
Total laboratory confirmed cases by date (as of 21.6.2020, 00:30 am), n= 287



Cumulative Number of active confirmed cases, recovered and deaths (23.3.2020 – 20-6-2020), n (cumulative)=287



Summary of COVID-19 confirmed cases (as of 20-6-2020) ,n (contacts)= 5,501



Summary of current situation

Type	New (19.6.2020-20.6.2020)	Total (on 20.6.2020)
Suspected and Person Under Investigation (PUI)	33	227
Hospital Quarantine	9	90
Facility Quarantine	1,214	35,415

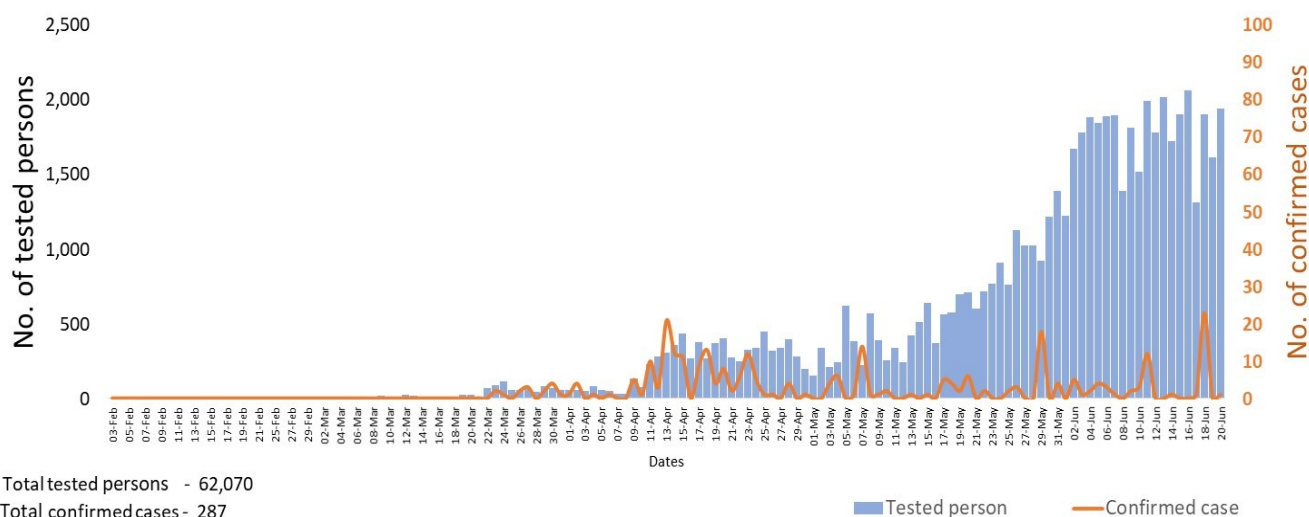
Person under Investigation (PUI) by State/Region hospitals (19.6.2020 – 20.6.2020) n= 5,712

No. of Facility Quarantine sites and Quarantined people on 20.6.2020

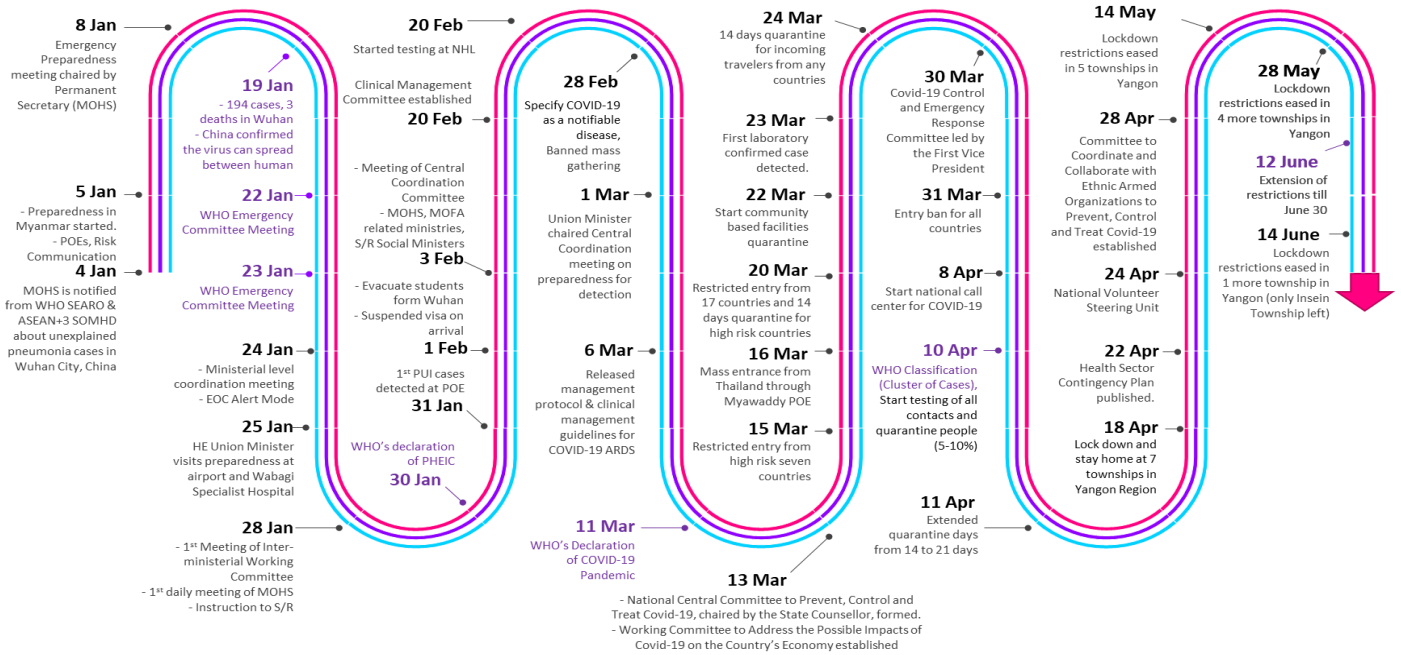
No.	State/Region	PUI
1.	Yangon	2,937
2.	Mandalay	1,076
3.	Kayin	219
4.	Mon	210
5.	Shan(N)	198
6.	Magway	190
7.	Bago	179
8.	Shan (E)	113
9.	Ayeyarwaddy	102
10.	Shan(S)	95
11.	Sagaing	83
12.	Kayah	76
13.	Naypyitaw	63
14.	Rakhine	60
15.	Thanintharyi	56
16.	Kachin	33
17.	Chin	22
Total		5,712

No.	State/Region	No. of facilities	Total no. of quarantine
1.	Magway	2,619	4,654
2.	Kayin	1028	4,585
3.	Mon	352	3,653
4.	Kachin	405	3,181
5.	Bago	272	2,978
6.	Yangon	85	2,941
7.	Mandalay	135	2,210
8.	Rakhine	501	2,141
9.	Sagaing	969	2,013
10.	Shan S	126	1,668
11.	Ayeyarwaddy	222	1,651
12.	Tanintharyi	189	1,210
13.	Shan North	241	1,007
14.	Naypyitaw	19	923
15.	Chin	32	242
16.	Shan East	11	181
17.	Kayah	18	177
Total		7,224	35,415

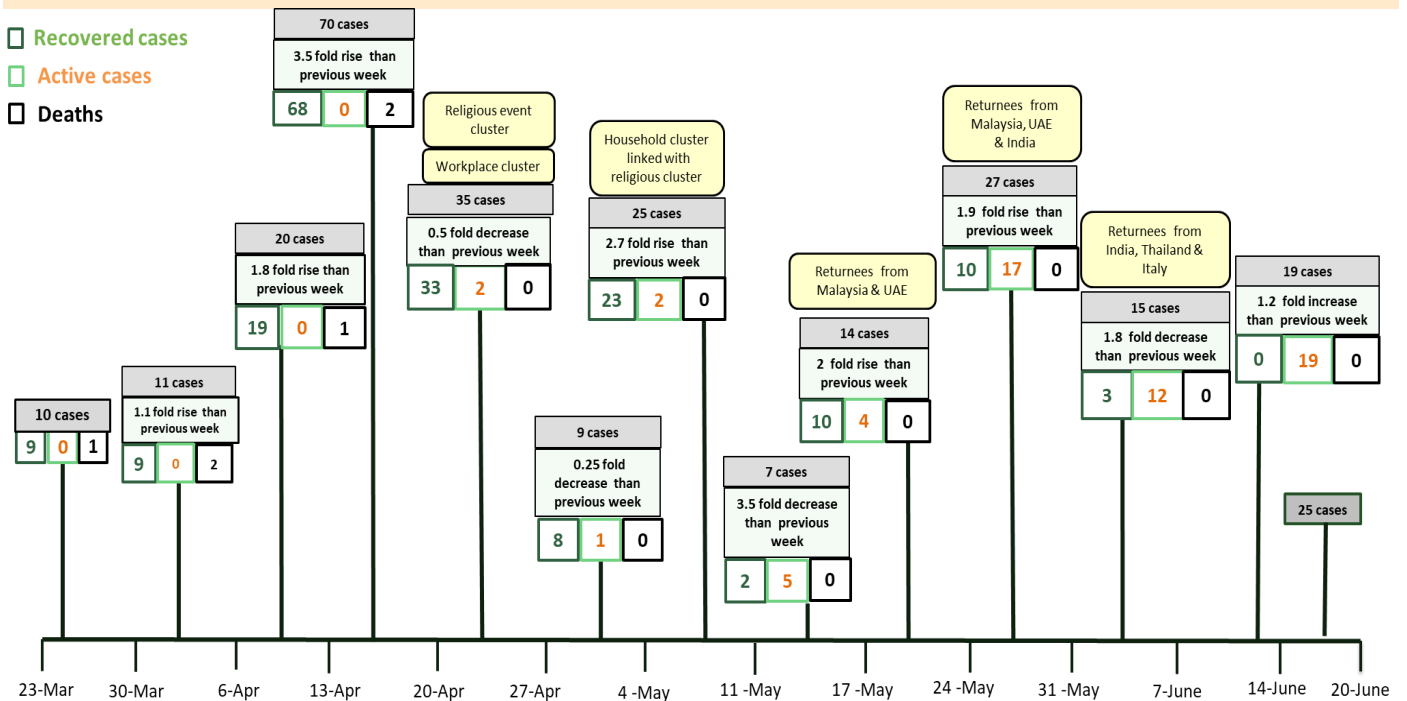
COVID-19 confirmed cases among tested by date (as of 20.6.2020)



Timeline of Preparedness and Response to COVID-19 in Myanmar (as of 20.6.2020)



Summary of new confirmed cases detection after first two cases (as of 20.6.2020)



- Confirmed cases were detected as a peak in the 4th week after first confirmed cases due to the religious event cluster.
- Confirmed cases were decreased but still raised than the first 3 weeks due to the religious event cluster and workplace cluster.
- There were an increased in numbers of cases in the 7th week after the first two cases due to the household cluster linked with a religious cluster.
- Confirmed cases were detected by a nearly two-fold rise in the 9th and 10th weeks after the first two cases because of returnees coming back by relief flights.