



# Ministry of Health and Sports (Myanmar)

## Department of Public Health

### Central Epidemiology Unit

(26 September 2020)

#### Coronavirus Disease 2019 (COVID-19)

Situation Report - 172

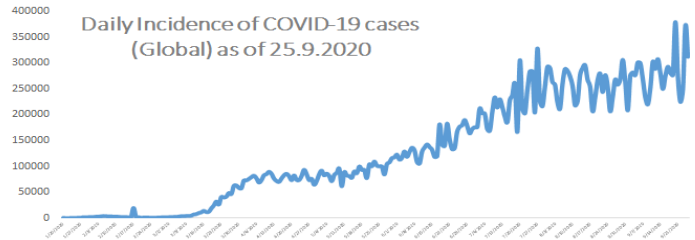
Data as reported by States and Regions by 25 September 2020

WHO Coronavirus Disease (COVID-19) Dashboard data as of 5:14 PM CEST 25 September 2020

**Confirmed cases**  
**32,110,656**

**Deaths**  
**980,031**

**Case Fatality Rate**  
**3.1 %**



#### Myanmar Situation

**Total Tested**  
**245,154**

**Confirmed Cases**  
**9,111**

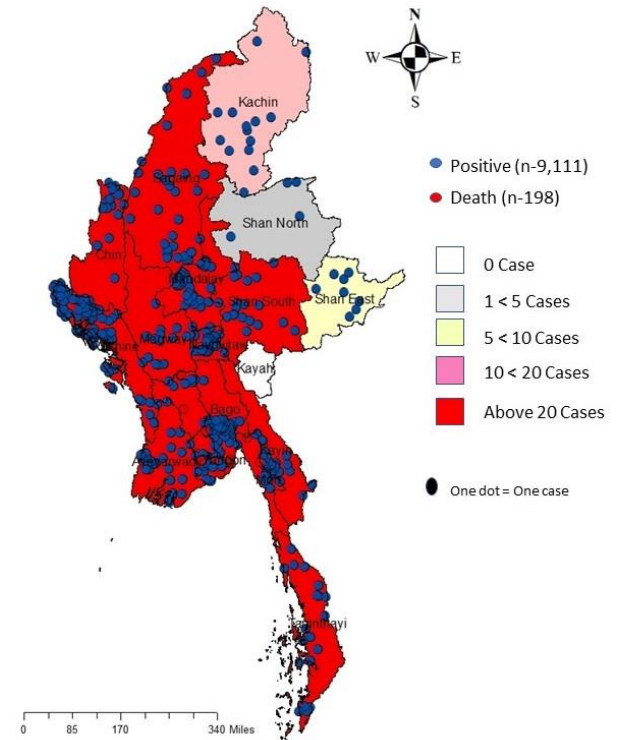
**Negative**  
**236,043**

**Discharged**  
**2,681**  
29.4% of Confirmed cases

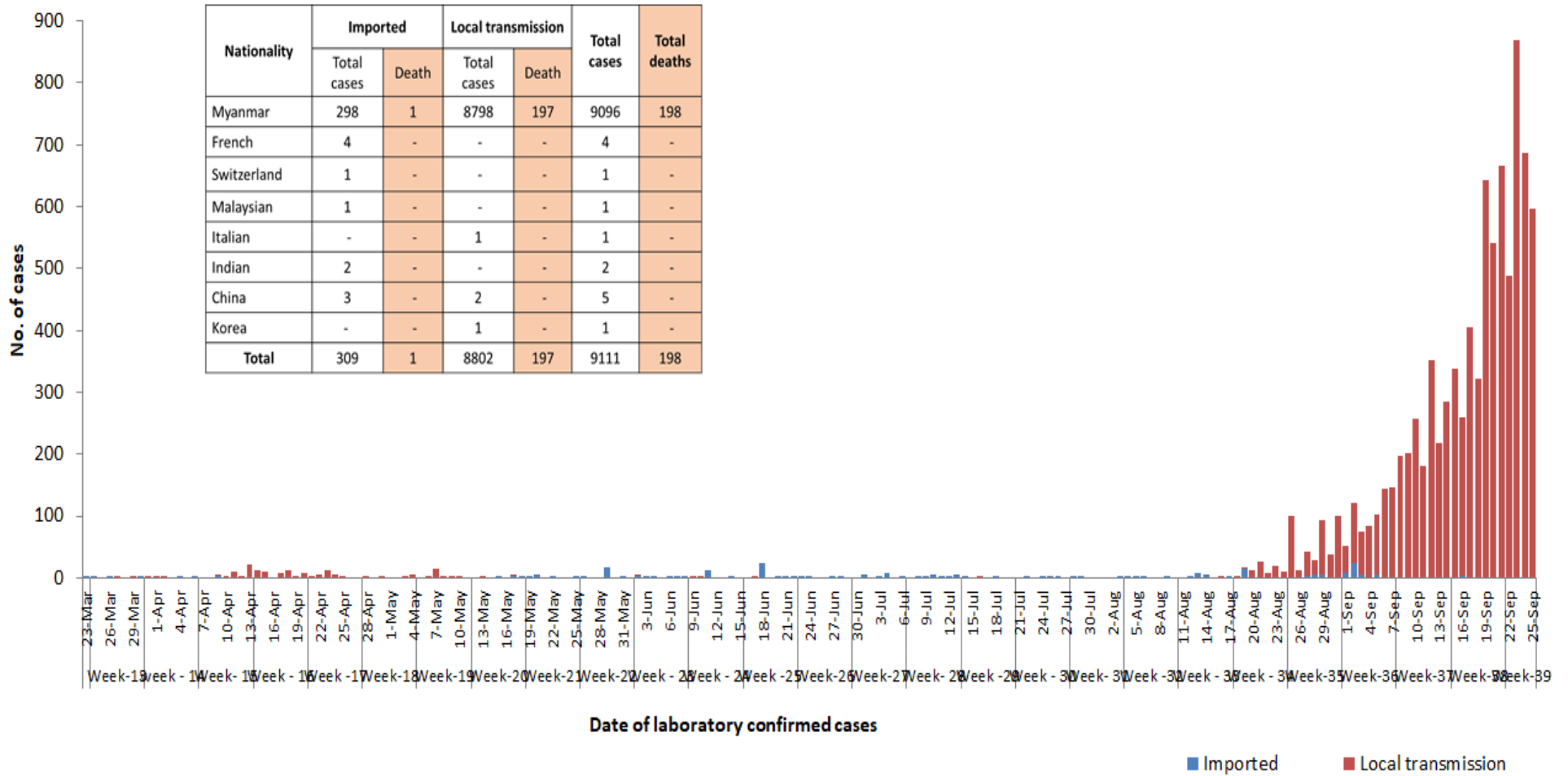
**Death**  
**198**  
2.2% of Confirmed cases

No	State/Region	COVID -19 Confirmed case	New confirmed cases within 24 hours	Deaths
1	Yangon	6,657	552	185
2	Rakhine	1,254	13	3
3	Bago	265	11	2
4	Mandalay	236	2	1
5	Mon	215	5	3
6	Ayeyarwaddy	160	7	-
7	Naypyitaw	124	3	2
8	Sagaing	43	1	-
9	Kayin	38	-	-
10	Magway	29	-	-
11	Chin	24	-	-
12	Thanintharyi	20	-	1
13	Shan (South)	20	2	1
14	Kachin	14	1	-
15	Shan (East)	8	-	-
16	Shan (North)	4	-	-
17	Kayar	-	-	-
<b>Total</b>		<b>9,111</b>	<b>597</b>	<b>198</b>

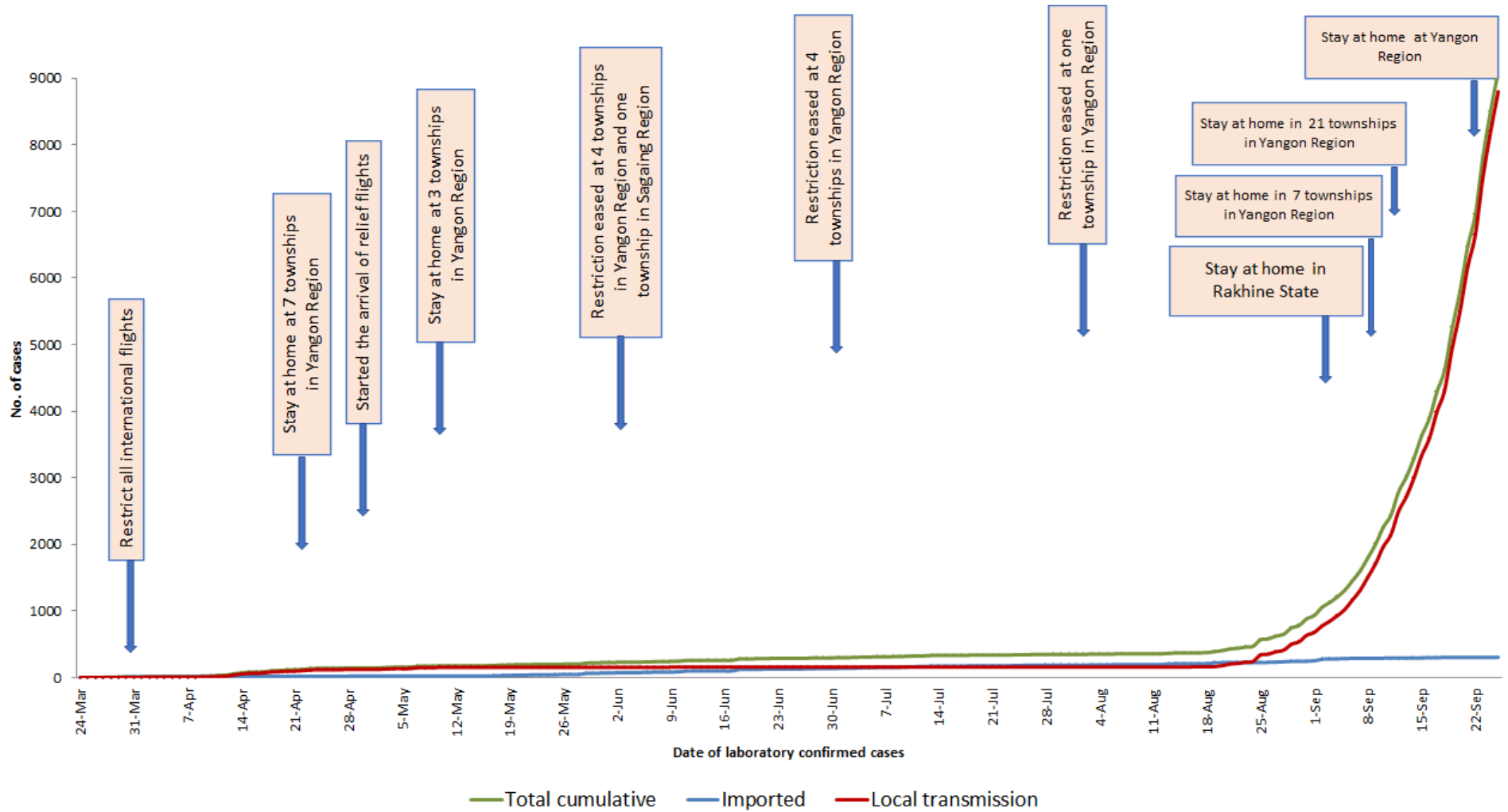
Map showing COVID-19 laboratory confirmed cases



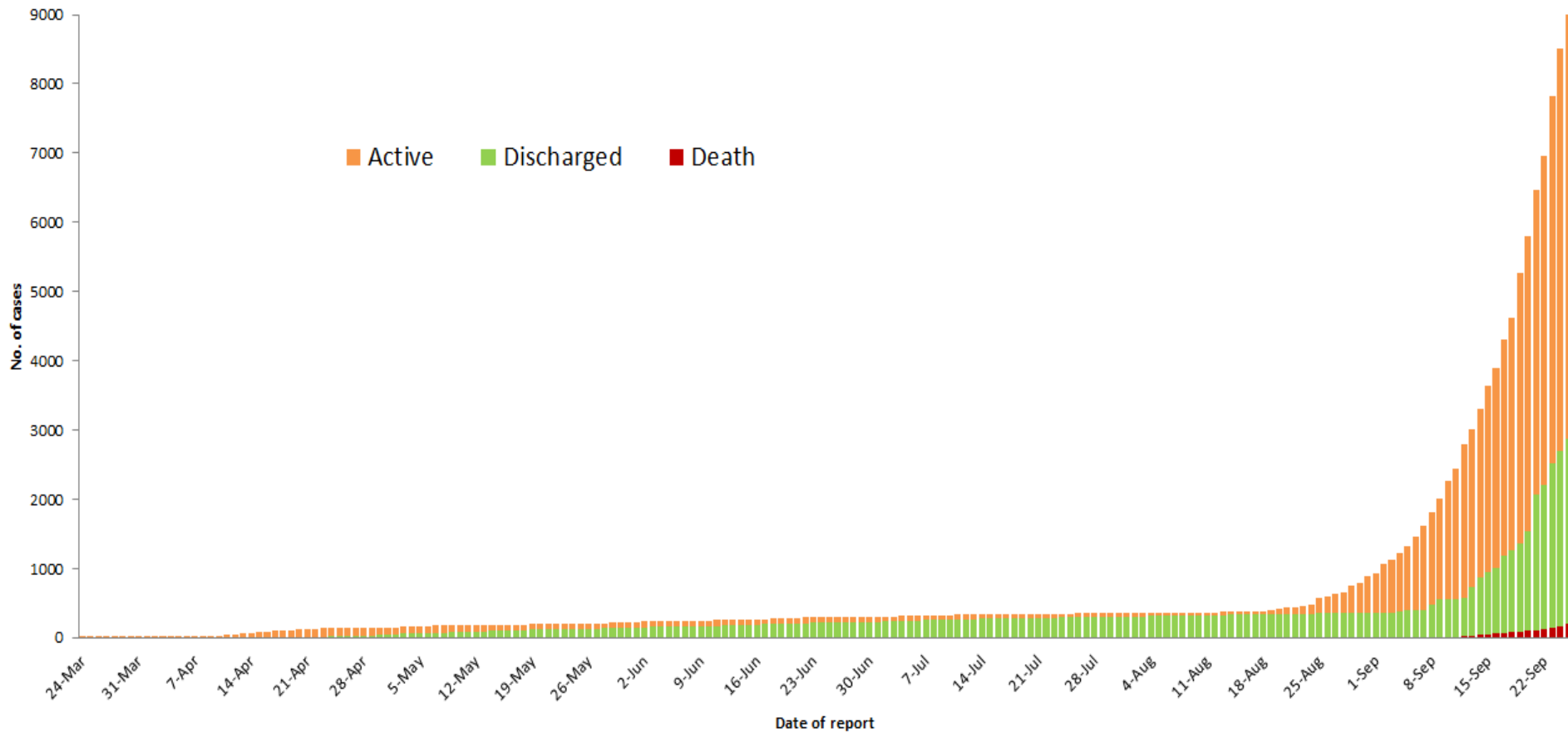
## COVID-19 confirmed cases by types of transmissions (as of 25.9.2020) n=9,111



## Total laboratory confirmed cases by date (as of 25.9.2020), n= 9,111



Cumulative Number of active confirmed cases, recovered and deaths (23.3.2020 – 25.9.2020), n (cumulative)=9,111



Summary of current situation		
Type	New (24.9.2020-25.9.2020)	Total (on 25.9.2020)
Suspected and Person Under Investigation (PUI)	445	1360
Hospital Quarantine	50	529
Facility Quarantine	4,237	47,809

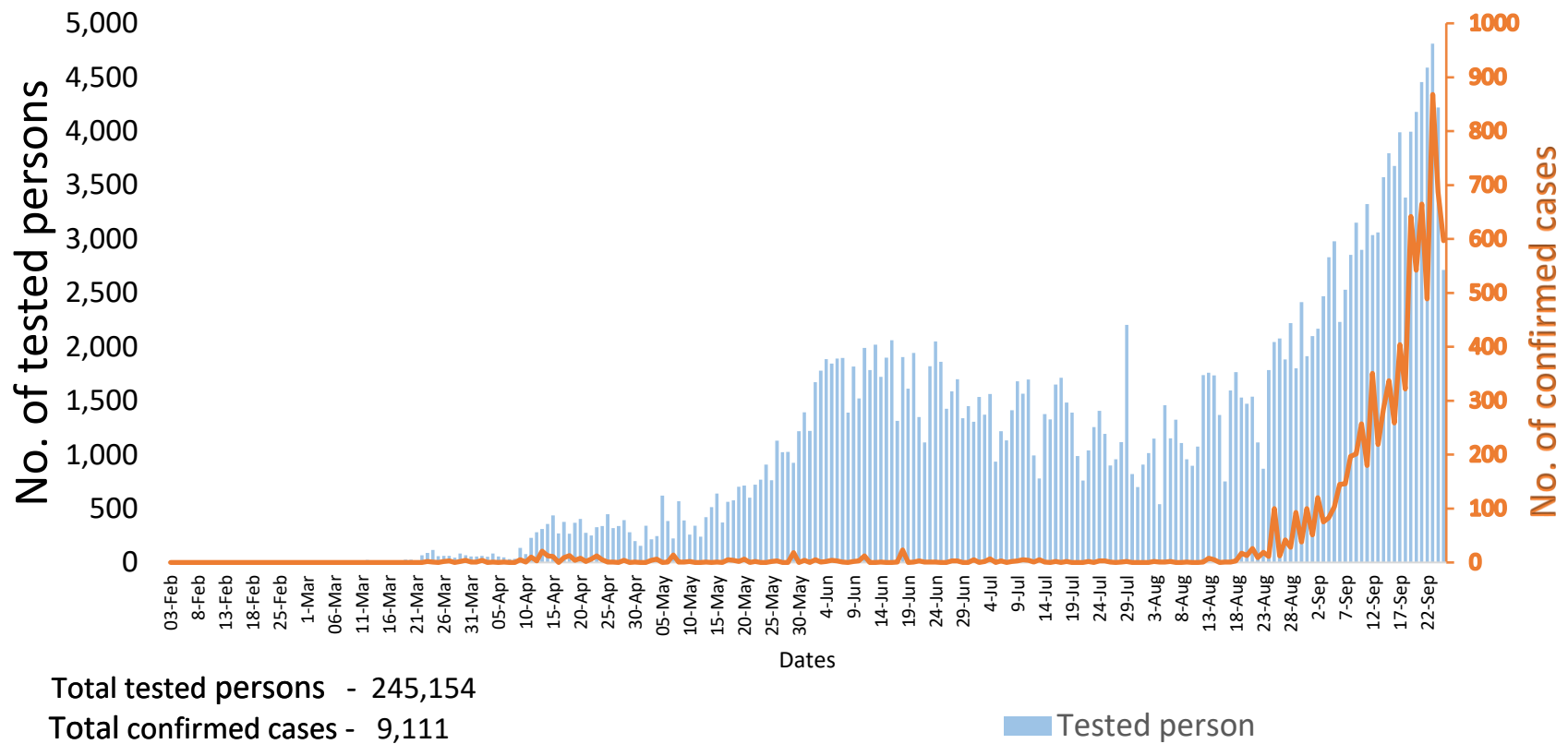
Person under Investigation (PUI) by State/Region hospitals (31.1.2020 – 25.9.2020) n= 13,741	No. of Facility Quarantine sites and Quarantined people on 25.9.2020
--	--

No.	State/Region	PUI	No.	State/Region	No. of facilities	Total no. of quarantine
1	Yangon	8160	1	Bago	1113	8611
2	Mandalay	2188	2	Ayeyarwaddy	1119	7700
3	Mon	593	3	Yangon	102	4984
4	Kayin	460	4	Magway	632	4589
5	Magway	382	5	Sagaing	629	4028
6	Shan(N)	317	6	Mandalay	472	3390
7	Bago	302	7	Mon	132	3136
8	Rakhine	302	8	Kachin	244	2384
9	Ayeyarwaddy	245	9	Kayin	372	2132
10	Shan ( E)	137	10	Rakhine	301	1553
11	Shan(S)	133	11	Naypyitaw	13	1344
12	Thanintharyi	122	12	Shan South	133	1250
13	Sagaing	118	13	Tanintharyi	153	1092
14	Kayah	86	14	Shan North	338	699
15	Naypyitaw	85	15	Kayah	12	390
16	Kachin	64	16	Chin	28	349
17	Chin	47	17	Shan East	16	178
<b>Total</b>		13,741	<b>Total</b>		5,809	47,809

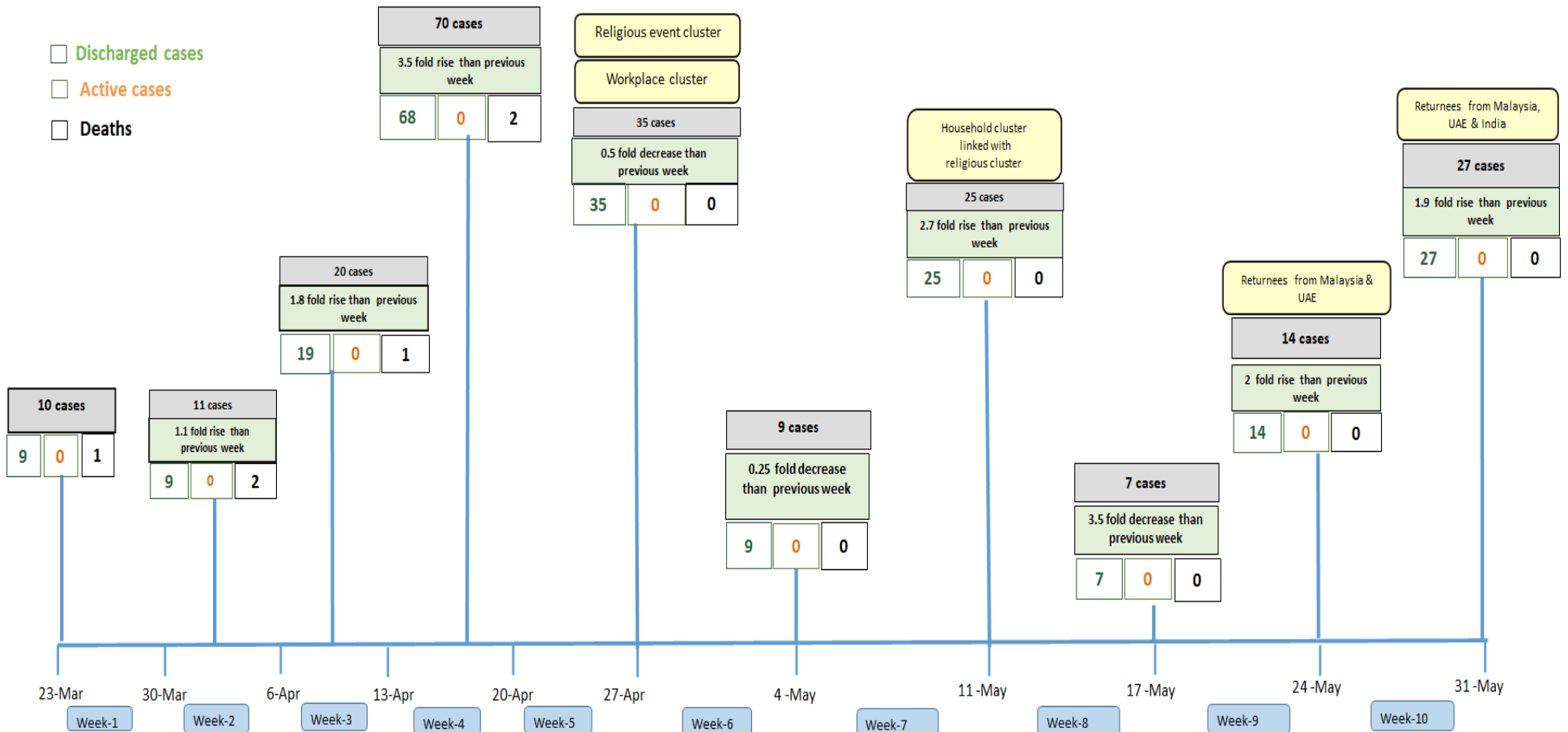
\*Facility quarantine rule changed from 21 days to 14 days on 11-9-2020 while 7 days home quarantine rule remain unchanged.

- First two confirmed cases were detected on 23 March 2020.
- Local transmission are increased during April and May 2020 due to big religious cluster in Yangon.
- After religious cluster, imported cases were mainly detected due to returnees from other countries.
- In August, local transmission were dramatically raised in Rakhine State firstly and other big clusters were detected in –
  - Mandalay- Myingyan cluster
  - Yangon – Thingangyun cluster.

## COVID-19 confirmed cases among tested by date (as of 25.9.2020)



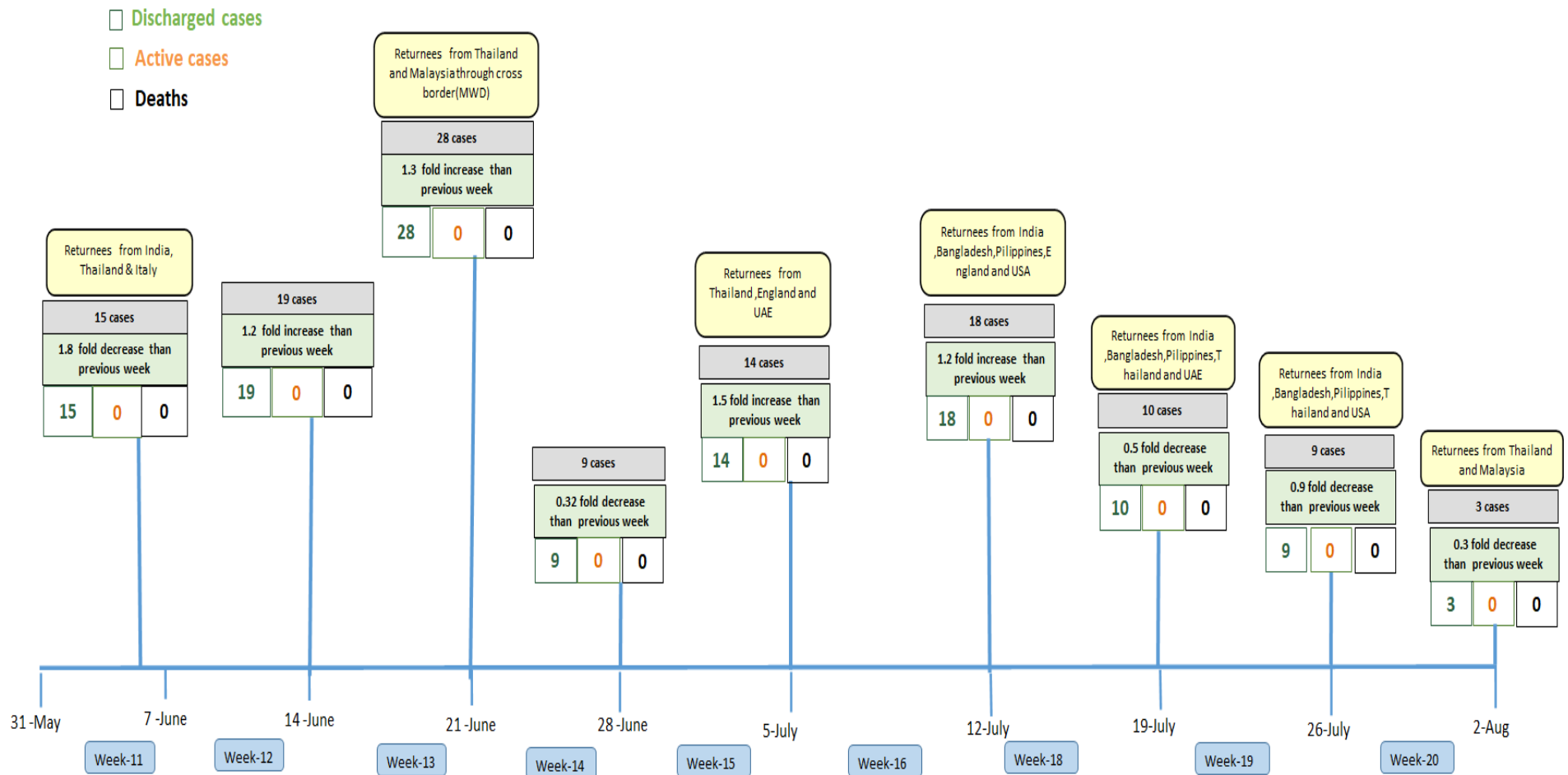
# Summary of new confirmed cases detection after first two cases (as of 25.9.2020)



- Confirmed cases were detected as a peak in the 4th week after first confirmed cases due to the religious event cluster.
- Confirmed cases were decreased but still raised than the first 3 weeks due to the religious event cluster and workplace cluster.
- There were an increased in numbers of cases in the 7th week after the first two cases due to the household cluster linked with a religious cluster.
- Confirmed cases were detected by a nearly two-fold rise in the 9th and 10th weeks after the first two cases because of returnees coming back by relief flights.

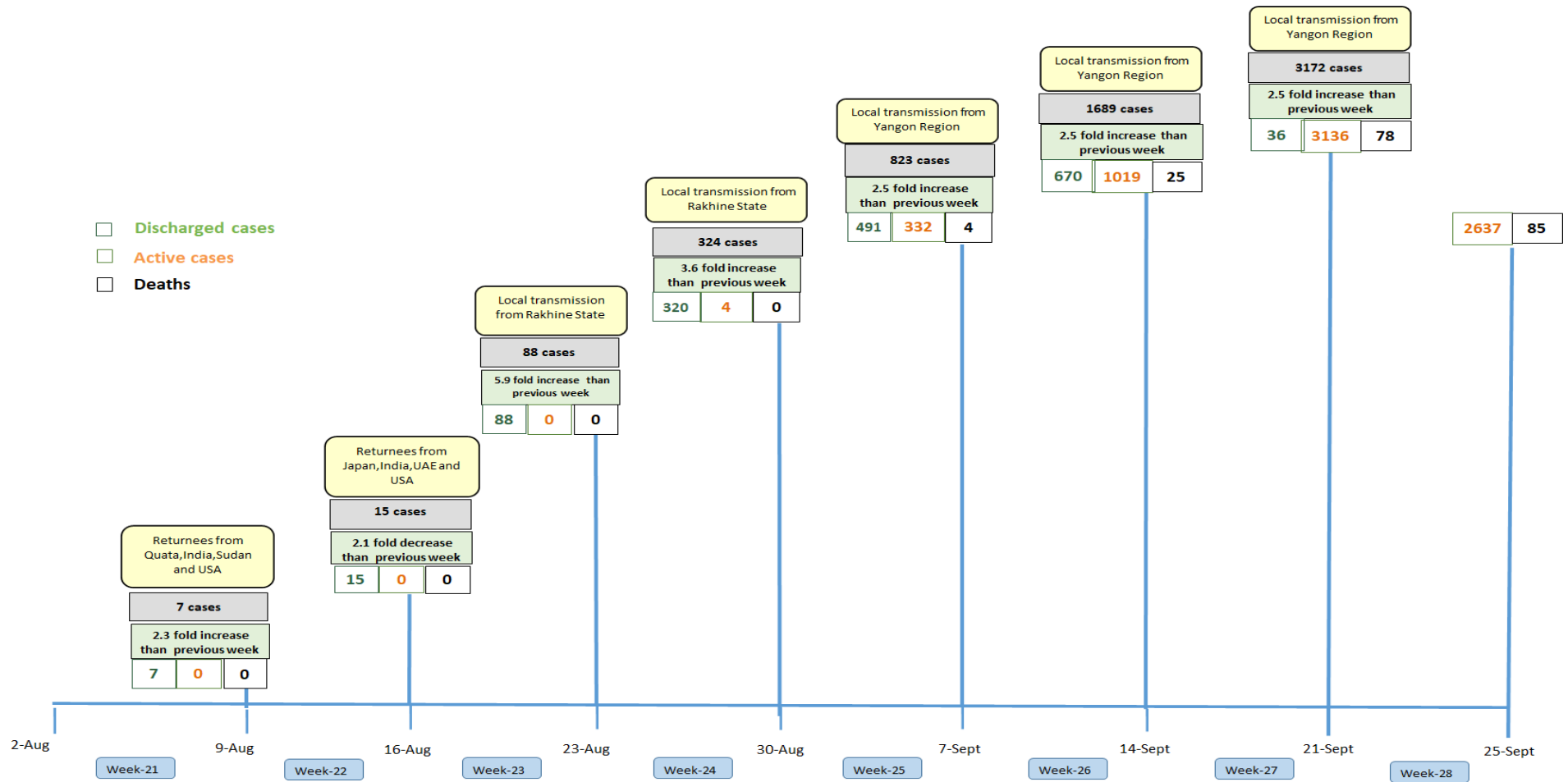


# Summary of new confirmed cases detection after first two cases (as of 25.9.2020)



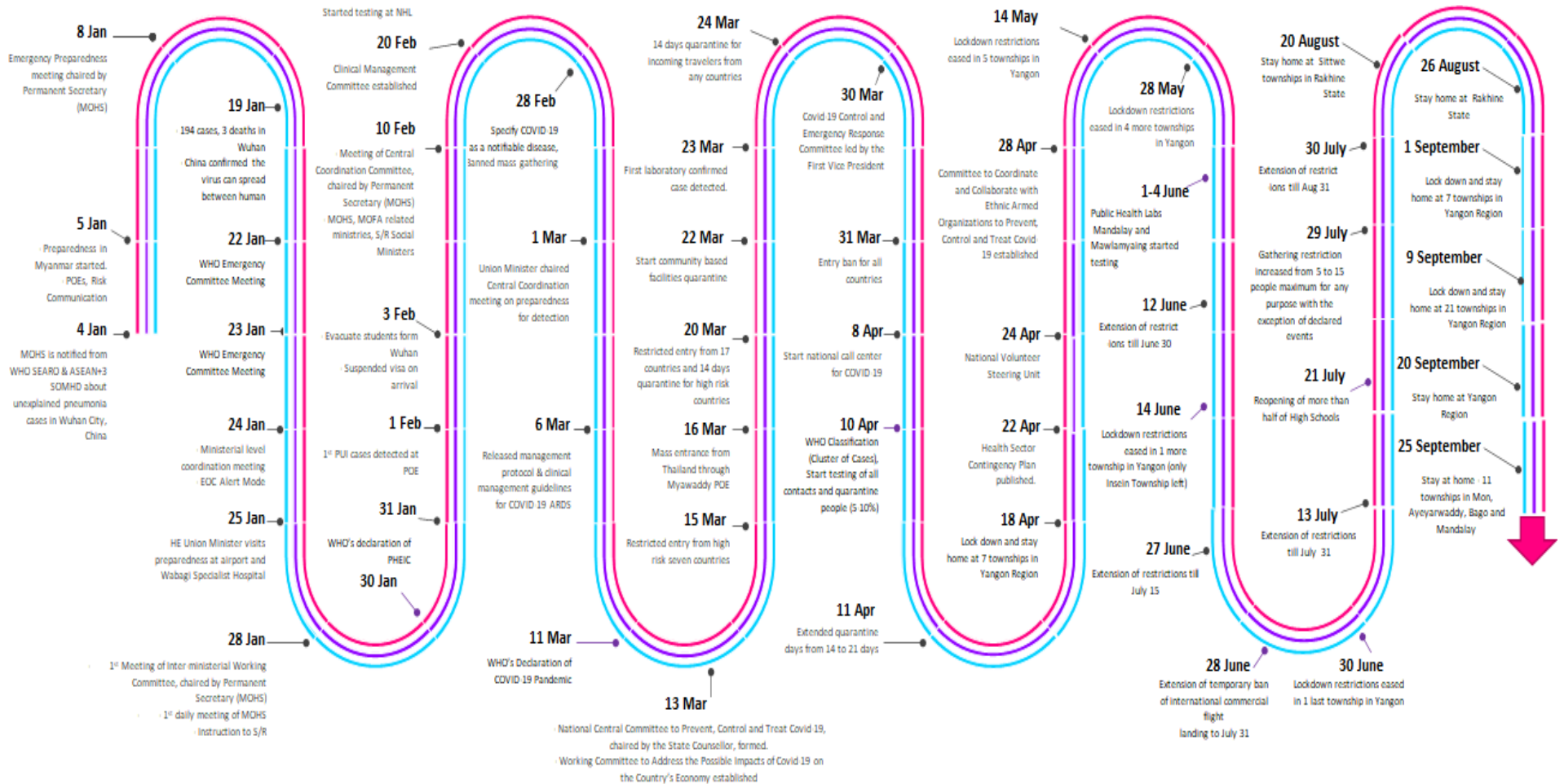
- Confirmed cases were detected as a peak in the 4th week after first confirmed cases due to the religious event cluster.
- Confirmed cases were decreased but still raised than the first 3 weeks due to the religious event cluster and workplace cluster.
- There were an increased in numbers of cases in the 7th week after the first two cases due to the household cluster linked with a religious cluster.
- Confirmed cases were detected by a nearly two-fold rise in the 9th and 10th weeks after the first two cases because of returnees coming back by relief flights.

# Summary of new confirmed cases detection after first two cases (as of 25.9.2020)



- Confirmed cases were detected as a peak in the 4th week after first confirmed cases due to the religious event cluster.
- Confirmed cases were decreased but still raised than the first 3 weeks due to the religious event cluster and workplace cluster.
- There were an increased in numbers of cases in the 7th week after the first two cases due to the household cluster linked with a religious cluster.
- Confirmed cases were detected by a nearly two-fold rise in the 9th and 10th weeks after the first two cases because of returnees coming back by relief flights.

# Timeline of Preparedness and Response to COVID-19 in Myanmar (as of 25.9.2020)



Hotline Number — 0673 420 268

Data source - CEU, DMS, NHL, PHL (MDY and MLM), DMR, DSGH, State and Region Health Departments