



Ministry of Health and Sports (Myanmar)

Department of Public Health

Central Epidemiology Unit

(17 June 2020)

Coronavirus Disease 2019 (COVID-19)

Situation Report - 71

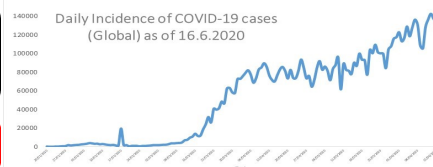
Data as reported by States and Regions by 2:00 AM MST 17 June 2020

Global Situation
(WHO situation report - 148)
data as of 14:30 MST 16 June 2020

Confirmed cases
7,941,791

Deaths
434,796

Case Fatality Rate
5.4 %



Myanmar Situation

Total tested
55,412

Confirmed cases
262

Negative
55,151

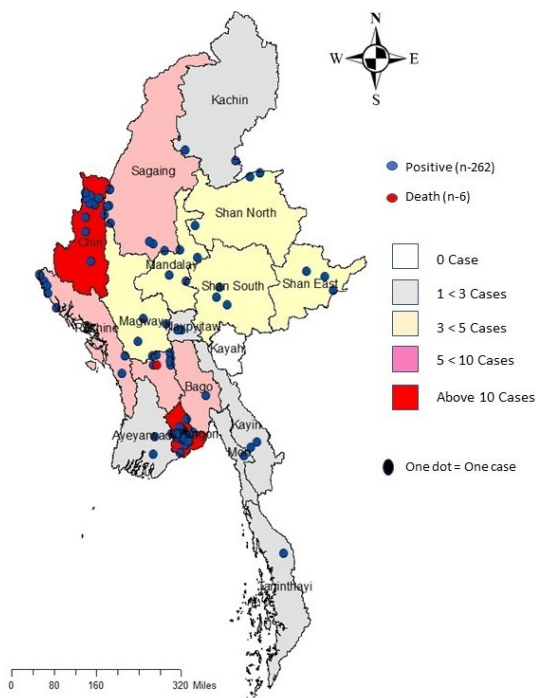
Recovered
185
70.6 % of confirmed cases

Active
71
27.0% of confirmed cases

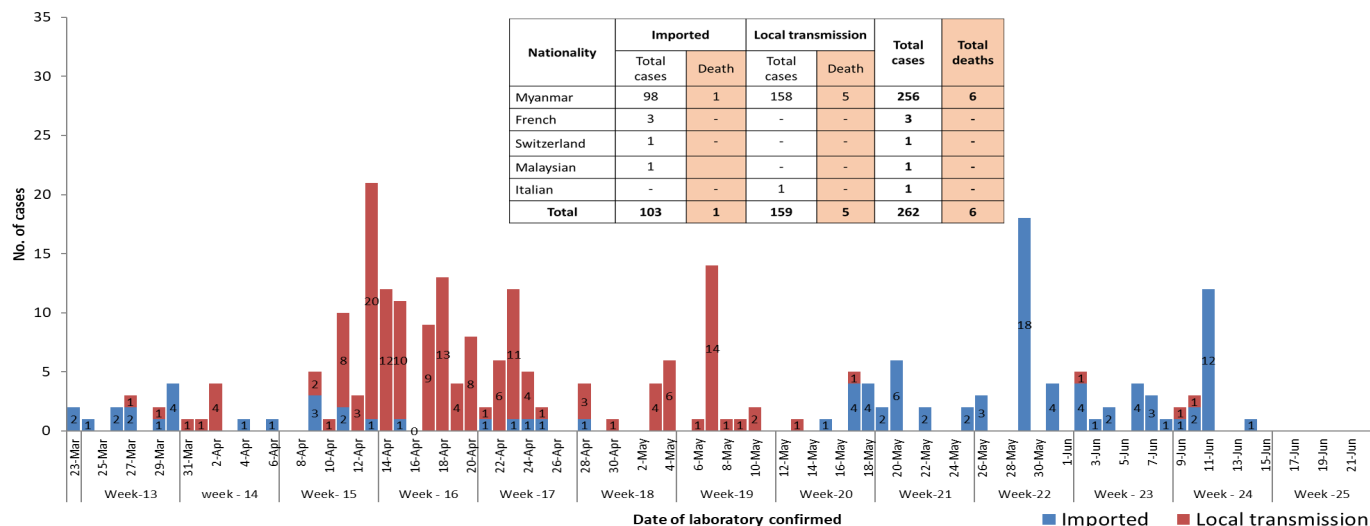
Death
6
2.2% of confirmed cases

No.	State/Region	COVID-19 Confirmed case	Recovered	Deaths
1.	Yangon	201	144(5 New)	5
2.	Chin	10	6	-
3.	Sagaing	9	7	-
4.	Bago	8	7 (1 New)	1
5.	Rakhine	8	1	-
6.	Shan(South)	4	2	-
7.	Mandalay	3	3	-
8.	Shan(East)	3	3	-
9.	Shan(North)	3	2	-
10.	Magway	3	2	-
11.	Naypyitaw	2	2	-
12.	Kayin	2	1	-
13.	Ayeyarwaddy	2	2	-
14.	Kachin	2	1	-
15.	Mon	1	1	-
16.	Thanintharyi	1	1	-
17.	Kayah	-	-	-
Total		262	185(6 New)	6

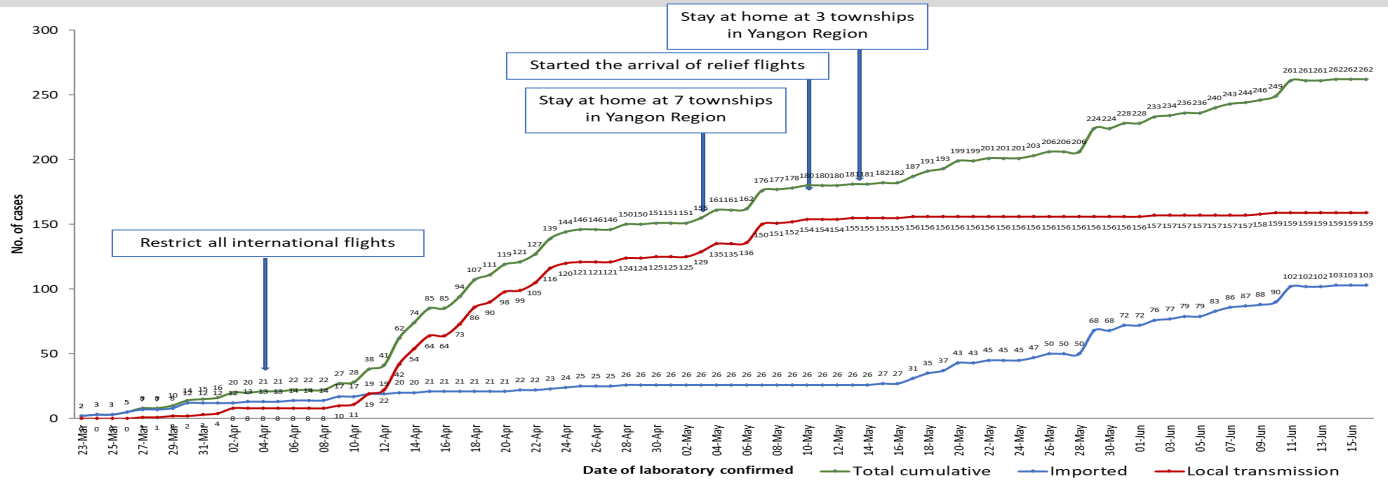
Map showing COVID-19 laboratory confirmed cases



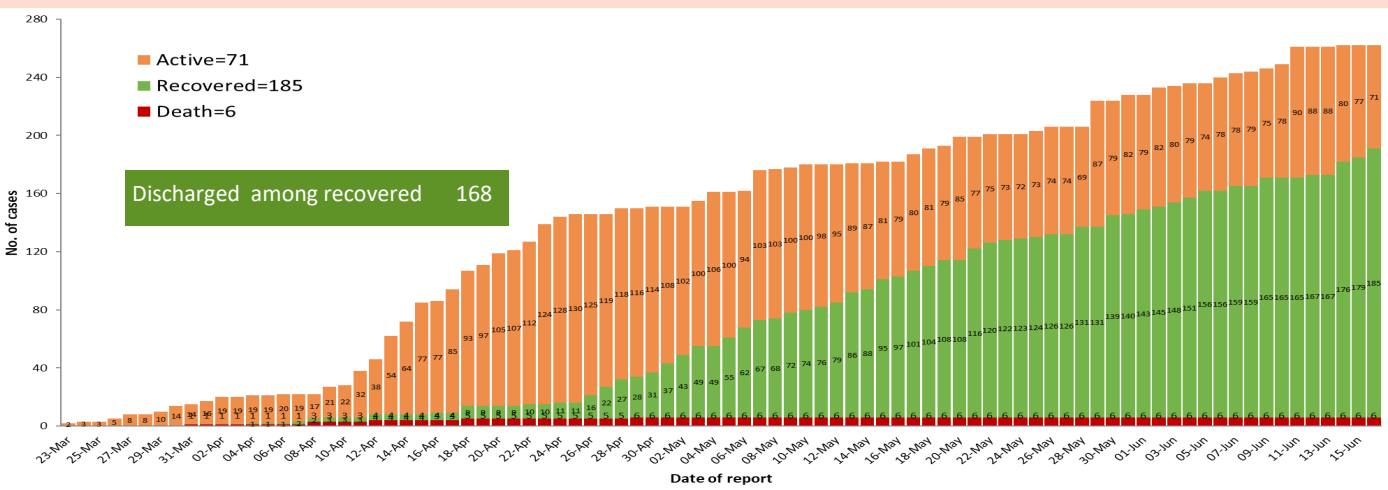
COVID-19 confirmed cases by types of transmissions (as of 17-6-2020, 2:00 am) n=262



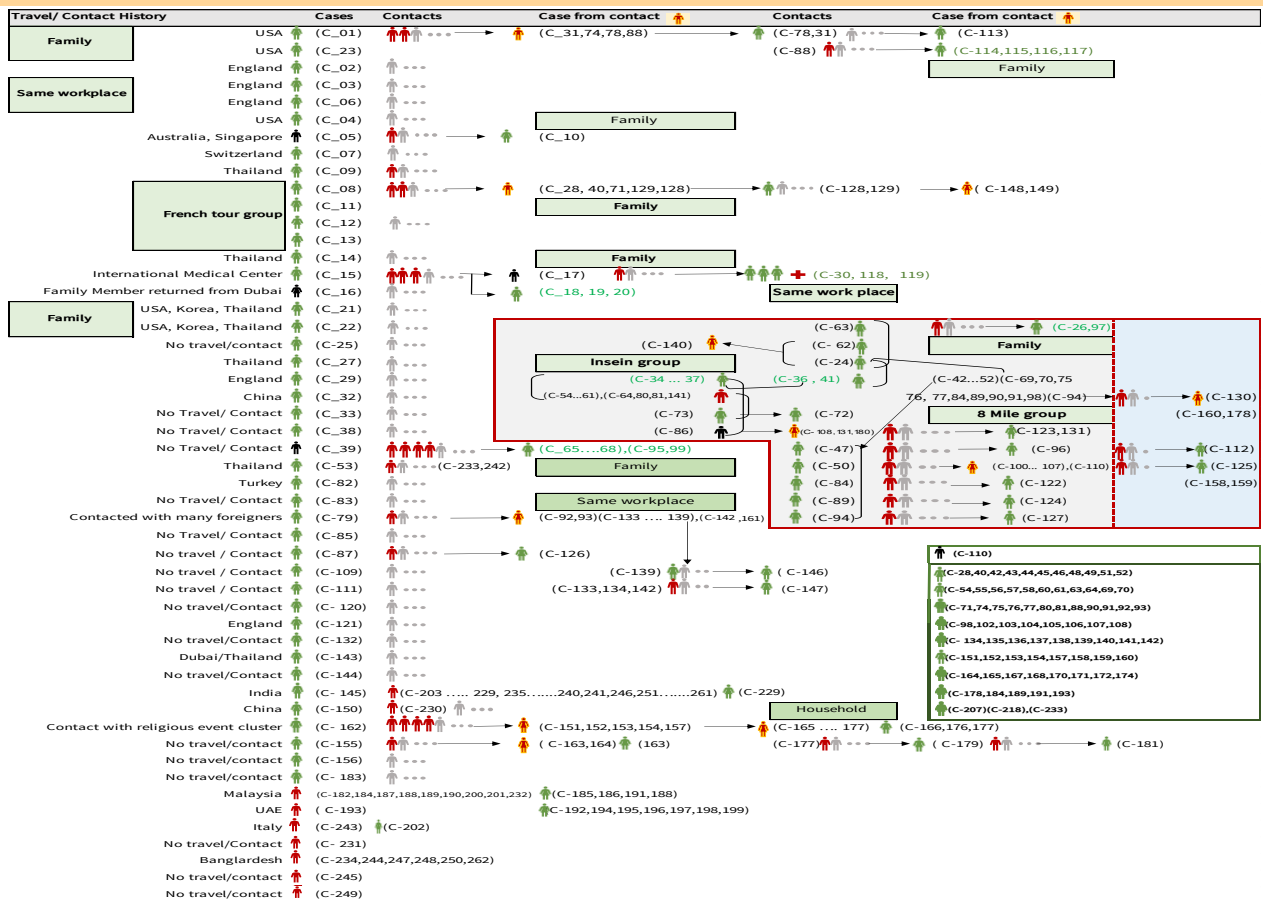
Total laboratory confirmed cases by date (as of 17.6.2020, 2:00 am, n= 262)



Cumulative Number of active confirmed cases, recovered and deaths (23.3.2020 – 16-6-2020), n (cumulative)=262



Summary of COVID-19 confirmed cases (as of 16-6-2020) ,n (contacts)= 5,407



Summary of current situation

Type	New (14.6.2020-15.6.2020)	Total (on 15.6.2020)
Suspected and Person Under Investigation (PUI)	28	247
Hospital Quarantine	8	87
Facility Quarantine	2,014	41,780

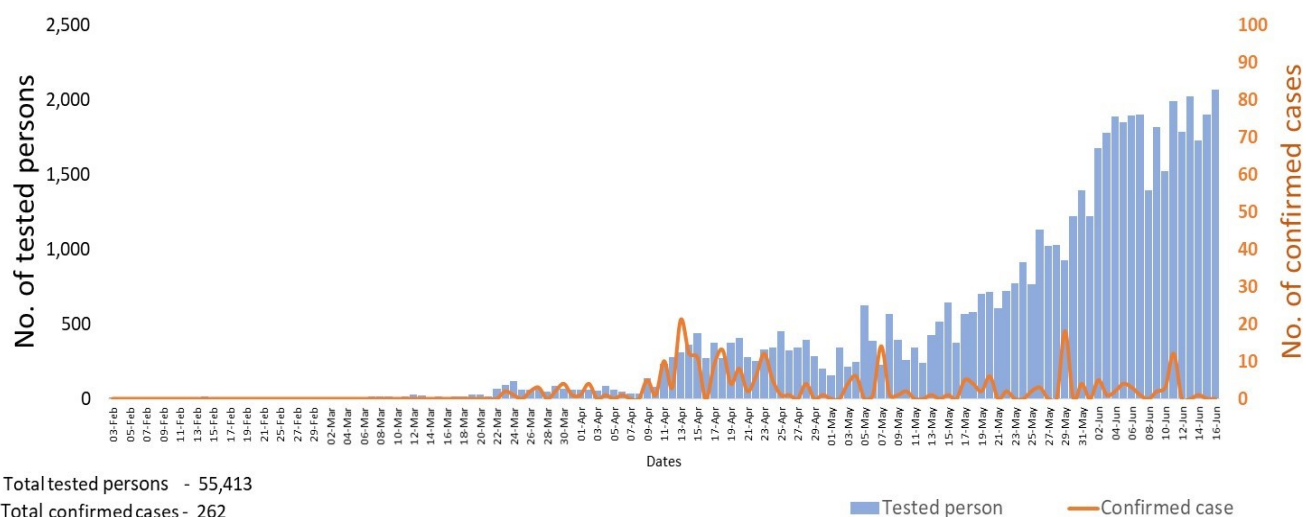
Person under Investigation (PUI) by State/Region hospitals (15.6.2020 – 16.6.2020) n= 5,587

No.	State/Region	PUI
1.	Yangon	2,875
2.	Mandalay	1,040
3.	Kayin	208
4.	Mon	206
5.	Shan(N)	197
6.	Magway	185
7.	Bago	179
8.	Shan (E)	113
9.	Ayeyarwaddy	102
10.	Shan(S)	94
11.	Sagaing	81
12.	Kayah	76
13.	Naypyitaw	63
14.	Rakhine	60
15.	Thanintharyi	54
16.	Kachin	32
17.	Chin	22
Total		5,587

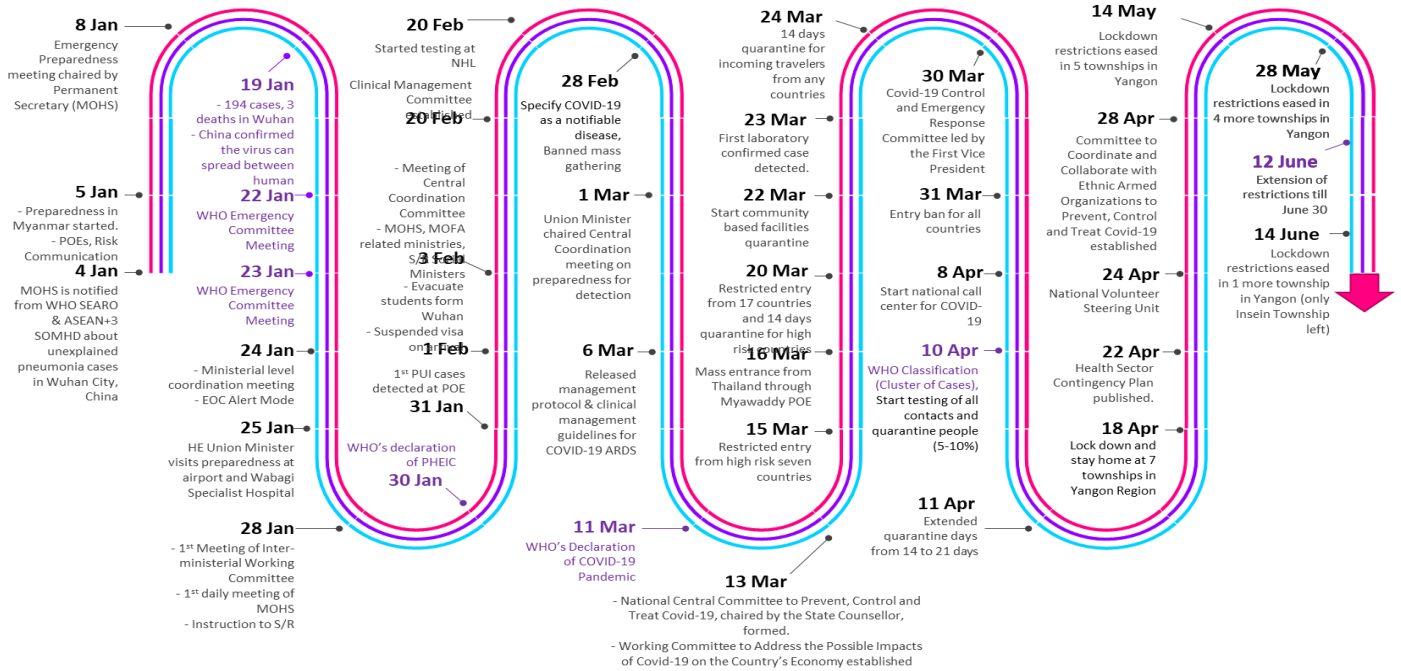
No. of Facility Quarantine sites and Quarantined people on 16.6.2020

No.	State/Region	No. of facilities	Total no. of quarantine
1.	Bago	470	6,508
2.	Magway	2,635	6,159
3.	Kayin	1003	4,392
4.	Mon	348	3,792
5.	Kachin	393	3,548
6.	Yangon	79	2,703
7.	Mandalay	191	2,656
8.	Sagaing	969	2,417
9.	Rakhine	501	2,288
10.	Ayeyarwaddy	534	1,622
11.	Shan S	127	1,600
12.	Tanintharyi	189	1,287
13.	Naypyitaw	19	1,066
14.	Shan North	238	1013
15.	Chin	34	265
16.	Shan East	11	258
17.	Kayah	18	206
Total		7,759	41,780

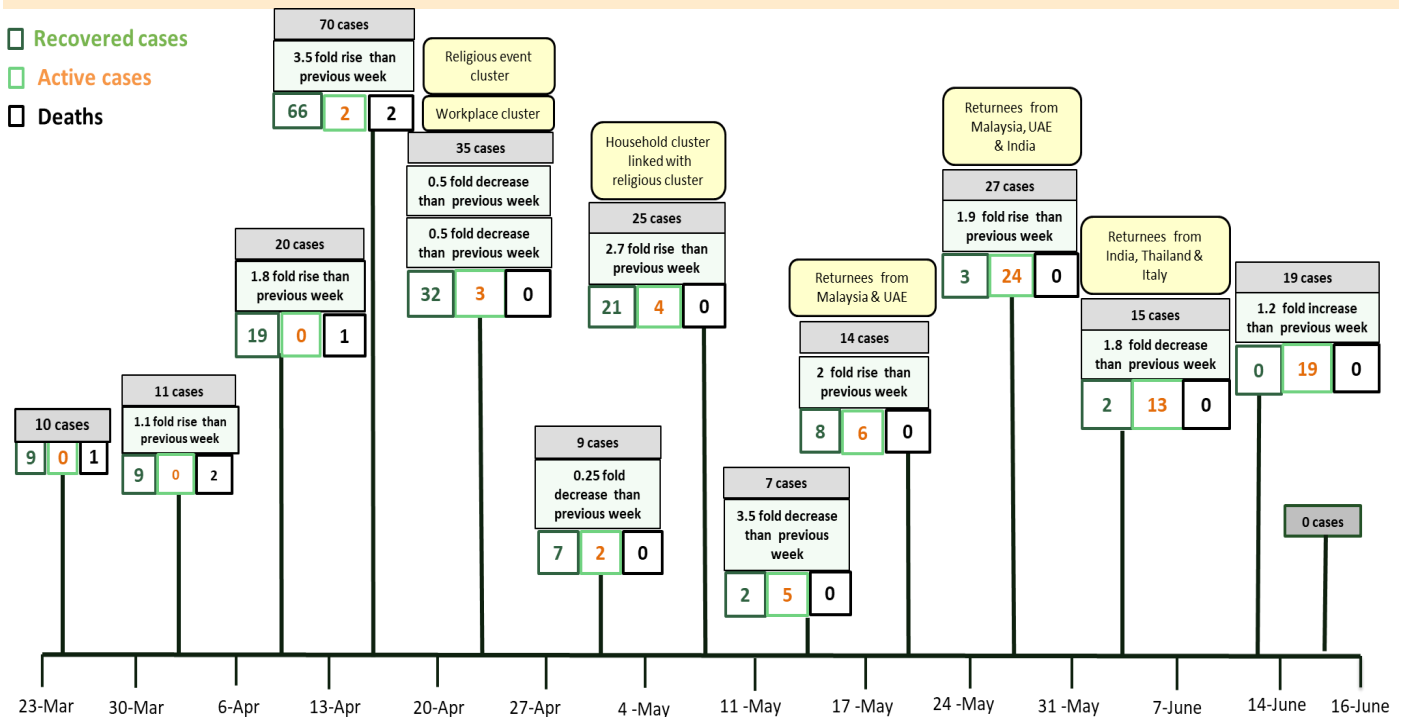
COVID-19 confirmed cases among tested by date (as of 16.6.2020)



Timeline of Preparedness and Response to COVID-19 in Myanmar (as of 16.6.2020)



Summary of new confirmed cases detection after first two cases (as of 16.6.2020)



- Confirmed cases were detected as a peak in the 4th week after first confirmed cases due to the religious event cluster.
- Confirmed cases were decreased but still raised than the first 3 weeks due to the religious event cluster and workplace cluster.
- There were an increased in numbers of cases in the 7th week after the first two cases due to the household cluster linked with a religious cluster.
- Confirmed cases were detected by a nearly two-fold rise in the 9th and 10th weeks after the first two cases because of returnees coming back by relief flights.