



Ministry of Health and Sports (Myanmar)

Department of Public Health

Central Epidemiology Unit

(21 July 2020)

Coronavirus Disease 2019 (COVID-19)

Situation Report - 105

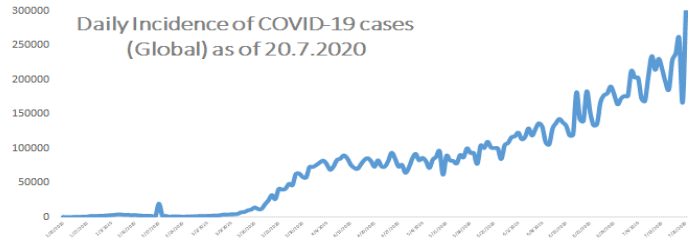
Data as reported by States and Regions by 9:00 PM MST 20 July 2020

Global Situation (WHO situation report - 182) data as of 14:30 MST 20 July 2020

Confirmed cases
14,348,858

Deaths
603,691

Case Fatality Rate
4.2 %



Myanmar Situation

Total Tested

104,874

Confirmed Cases

341

Negative

104,533

Recovered

280

82.1% of Confirmed cases

Active

55

16.1% of Confirmed cases

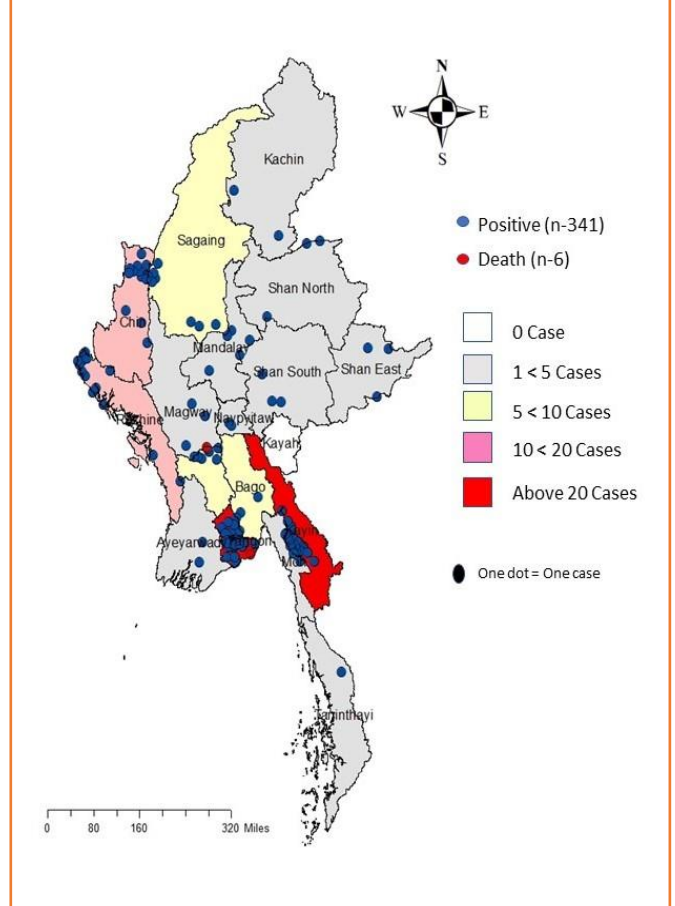
Death

6

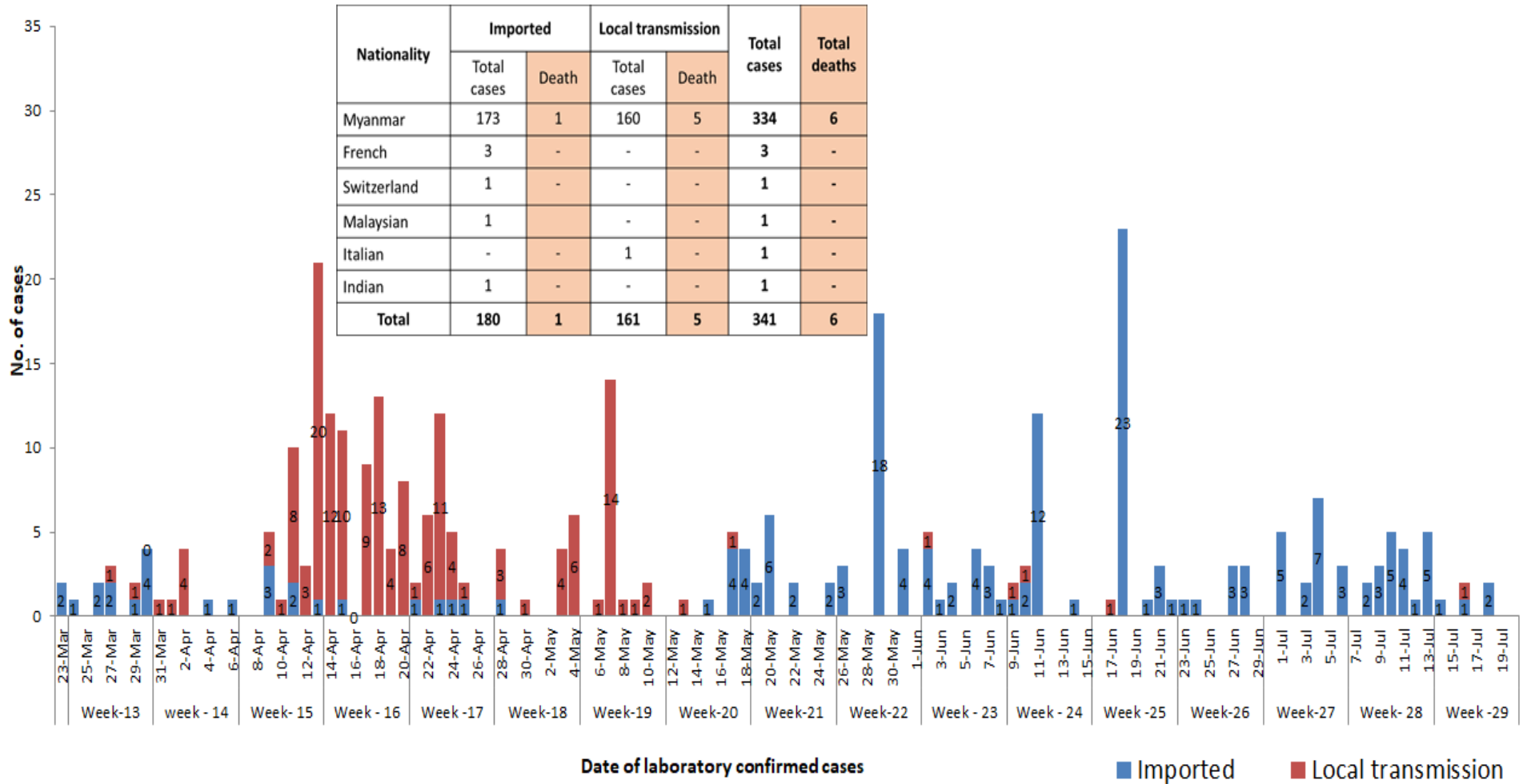
1.7% of Confirmed cases

No	State/Region	COVID –19 Confirmed case	Recovered	Deaths
1	Yangon	244	193(2 New)	5
2	Kayin	26	24	-
3	Rakhine	15	11	-
4	Chin	12	10	-
5	Sagaing	9	9	-
6	Bago	9	8	1
7	Shan (South)	4	4	-
8	Mandalay	4	3	-
9	Shan (East)	3	3	-
10	Shan (North)	3	3	-
11	Magway	3	3	-
12	Naypyitaw	2	2	-
13	Ayeyarwaddy	2	2	-
14	Kachin	2	2	-
15	Mon	2	2	-
16	Thanintharyi	1	1	-
17	Kayah	-	-	-
Total		341	280(2 New)	6

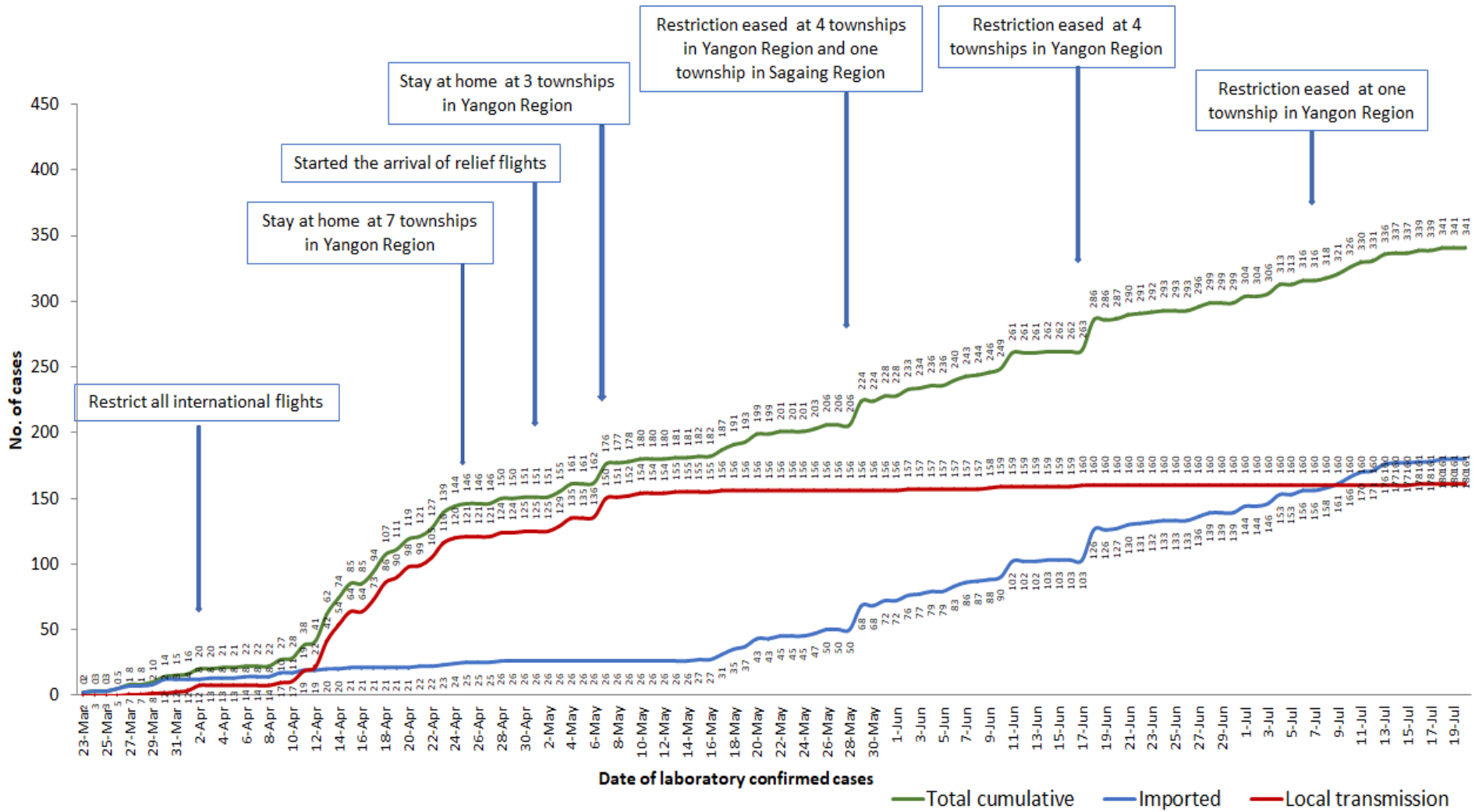
Map showing COVID-19 laboratory confirmed cases



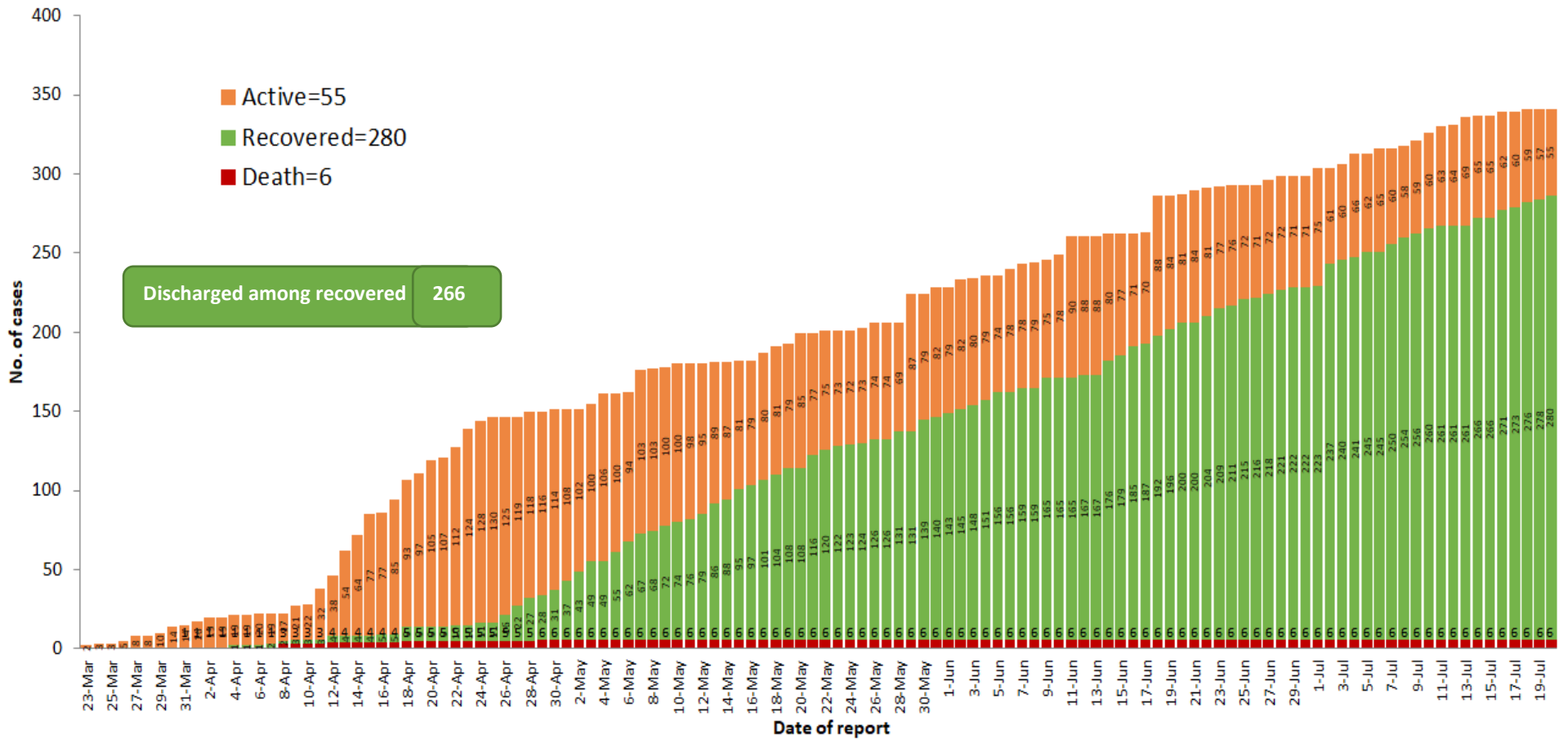
COVID-19 confirmed cases by types of transmissions (as of 20.7.2020, 9:00 pm) n=341



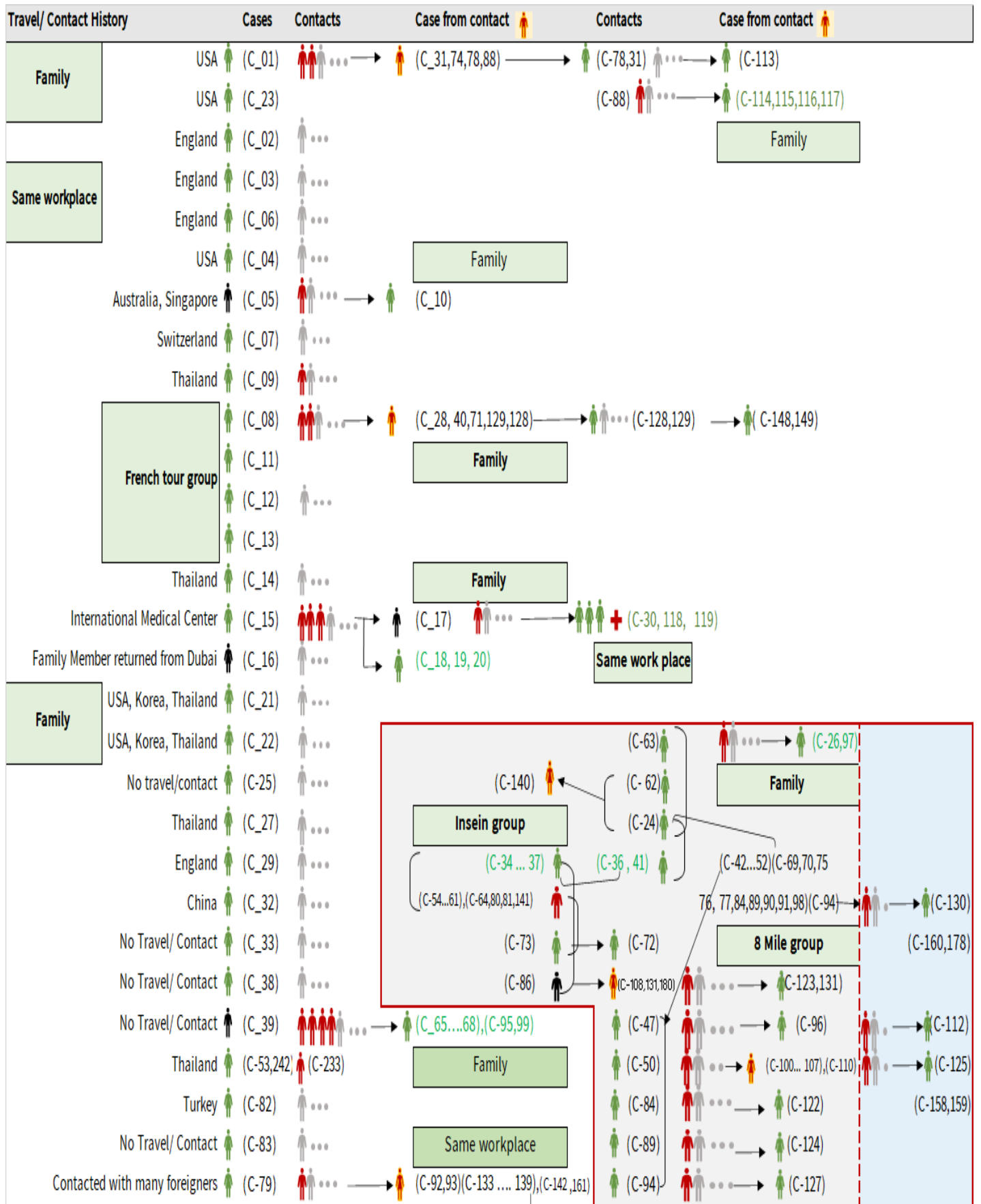
Total laboratory confirmed cases by date (as of 20.7.2020, 9:00 pm), n= 341



Cumulative Number of active confirmed cases, recovered and deaths (23.3.2020 – 20.7.2020), n (cumulative)=341



Summary of COVID-19 confirmed cases (as of 20.7.2020), n (contacts)= 5,748



Summary of COVID-19 confirmed cases (as of 20.7.2020), n (contacts)= 5,748

Travel/ Contact History	Cases	Contacts	Case from contact	Contacts	Case from contact
No Travel/ Contact	(C-85)	...			(C-110)
No travel / Contact	(C-87)	... →			(C-28,40,42,43,44,45,46,48,49,51,52)
No travel / Contact	(C-109)	...	(C-139) ... →	(C-146)	(C-54,55,56,57,58,60,61,63,64,69,70)
No travel / Contact	(C-111)	...	(C-133,134,142) ... →	(C-147)	(C-71,74,75,76,77,80,81,88,90,91,92,93)
No travel/Contact	(C- 120)	...			(C-98,100,101,102,103,104,105,106,107,108)
England	(C-317,327)	(C-121,302,303)			(C- 133,134,135,136,137,138,139,140,141,142)
No travel/Contact	(C-132)	...			(C-151,152,153,154,157,158,159,160,161)
Dubai/Thailand	(C-143)	...			(C-164,165,167,168,170,171,172,174)
No travel/Contact	(C-144)	...			(C-178,184,189,191,193,205,207,216,217,218)
India	(C- 145,204,209,210,213,215,220,221,223,224,229,225,227,228,252,255,259,296,299)				(C-226,233,234,235,237,246,253,258)
China	(C-150,230)				
Contact with religious event cluster	(C- 162)	... →	(C-151,152,153,154,157) → (C-165 ... 177)	(C-166,169,173,175,176,177)	
No travel/contact	(C-155)	... →	(C-163,164) (163)	(C-177) ... → (C-179)	... → (C-181)
No travel/contact	(C-156)	...			
No travel/contact	(C- 183)	...			
Malaysia	(C-184,189,273,280)	(C-182,185,186,191,188,190,187,200,201,232,275,282)			
UAE	(C-300,301,315,316,337,340)	(C-193,192,194,195,196,197,198,199,301,314)			
Italy	(C-243,202)				
No travel/Contact	(C- 231)				
Bangladesh	(C-234,244,247,250,262,293,308,309,310,325,326,334)	(C-244,245,247,248,250,262,291,292)			
No travel/contact	(C-245)	...			
No travel/contact	(C-249)				
No travel/contact	(C-263)	...			
Thailand	(C-269,279,332,333,335,336,338)	(C-264,265,266,267,268,270,271,272,273,274,276,277,278,280,281,283,284,285,286,287,294,304,312)			
Quata	(C-288)	(C-289,290)			
India	(C-203,205.....214,216...219,221.... 229,235....240,241,246,251,253,254...258,260,261,295,297,298,305,306,307,318,322,323,324,328,329,330)				
Lao	(C-311)	...			
Singapore	(C-313)	...			
Philippines	(C-319,320,321)	...			
USA	(C-331)	...			
No travel/contact	(C-339)	...			

Household

Summary of current situation

Type	New (19.7.2020-20.7.2020)	Total (on 20.7.2020)
Suspected and Person Under Investigation (PUI)	22	180
Hospital Quarantine	4	47
Facility Quarantine	1,338	24,770

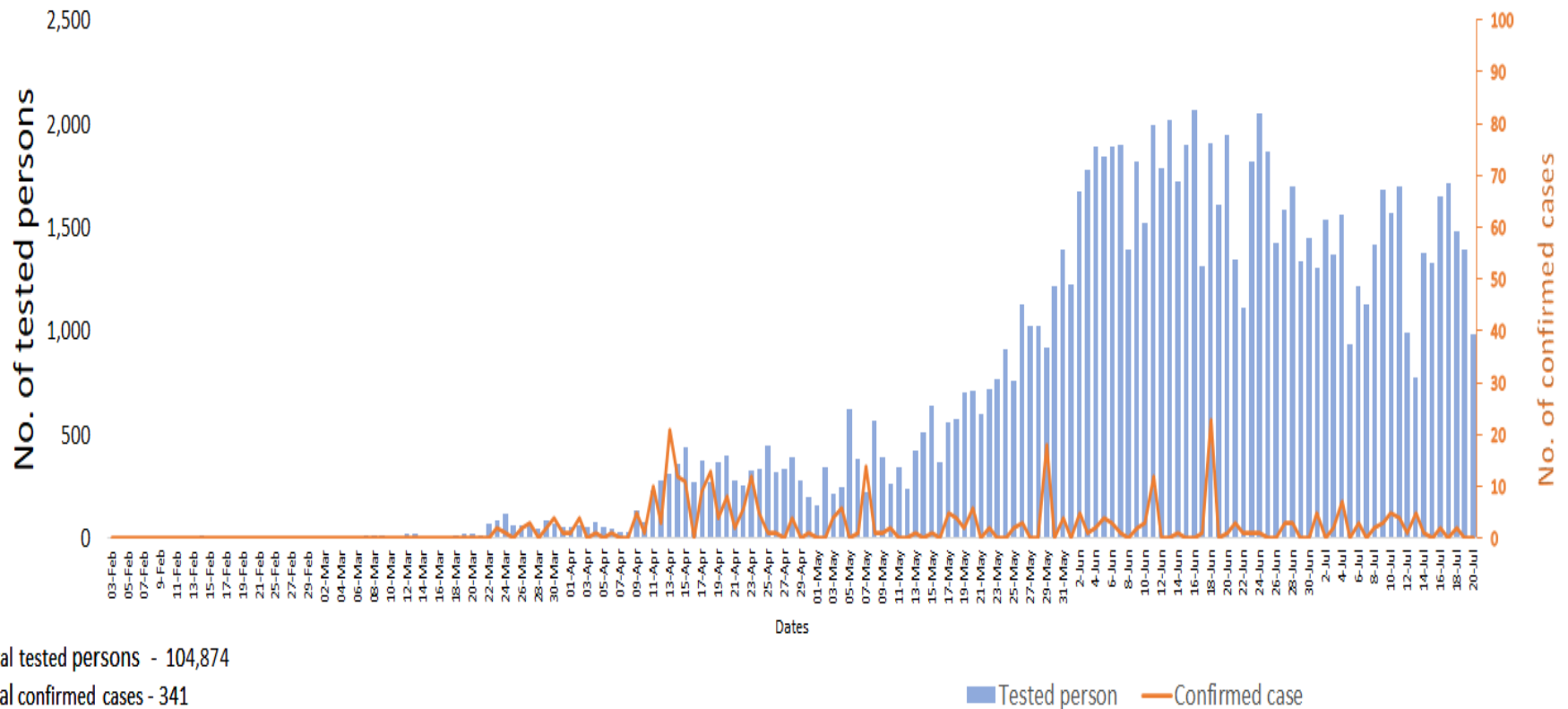
Person under Investigation (PUI) by State/Region hospitals (31.1.2020 – 20.7.2020) n= 6,562

No.	State/Region	PUI
1	Yangon	3,317
2	Mandalay	1,328
3	Kayin	278
4	Mon	263
5	Shan (N)	222
6	Magway	210
7	Bago	180
8	Shan (E)	123
9	Ayeyarwaddy	102
10	Shan (S)	99
11	Sagaing	90
12	Kayah	80
13	Thanintharyi	72
14	Rakhine	68
15	Naypyitaw	64
16	Kachin	39
17	Chin	27
Total		6,562

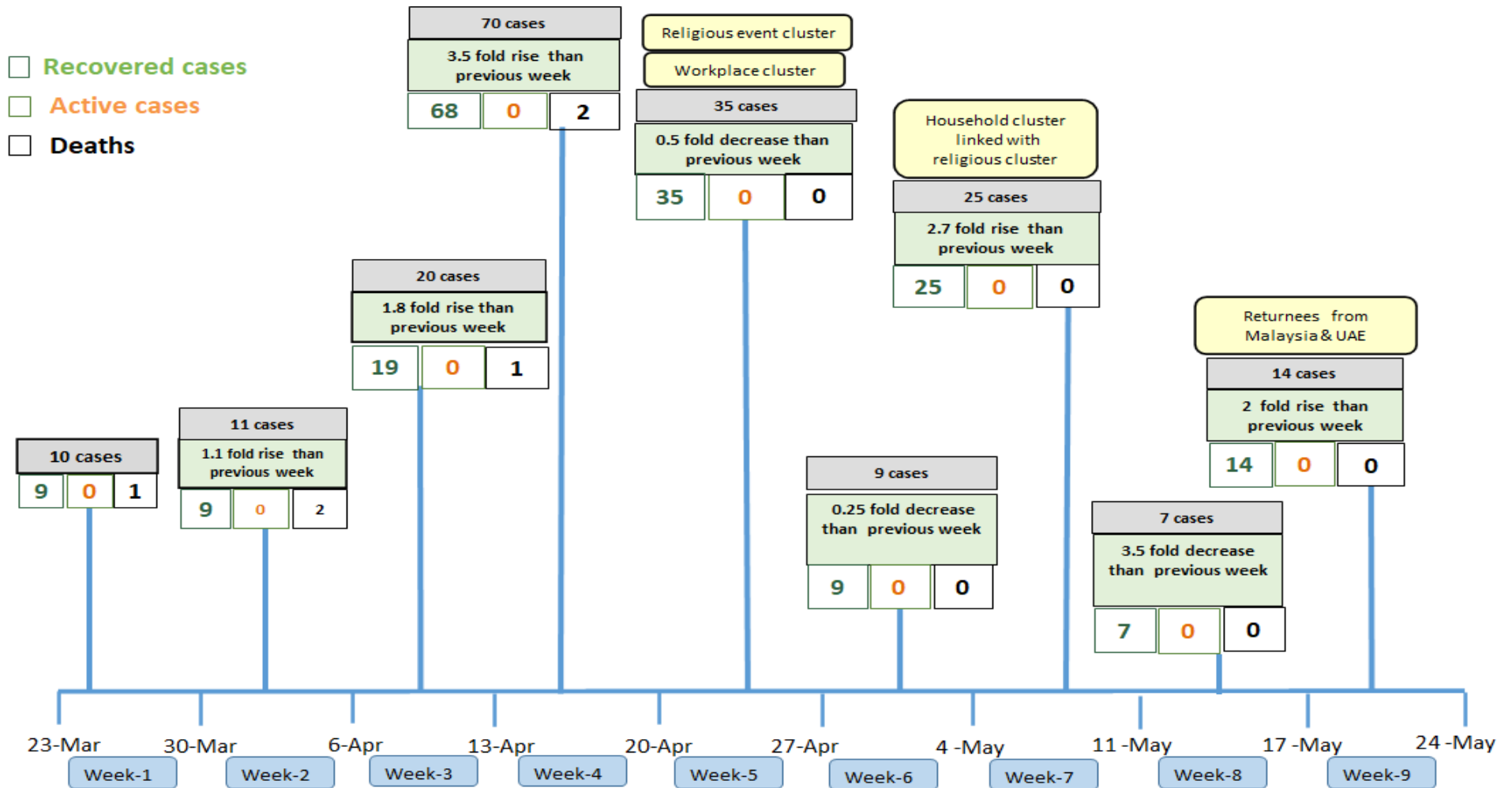
No. of Facility Quarantine sites and Quarantined people on 20.7.2020

No.	State/Region	No. of facilities	Total no. of quarantine
1	Bago	433	5,593
2	Yangon	66	3,683
3	Mon	318	2,783
4	Kayin	385	2,691
5	Magway	307	1,856
6	Tanintharyi	189	1,833
7	Sagaing	181	1,085
8	Mandalay	87	1,078
9	Rakhine	279	906
10	Shan South	118	786
11	Ayeyarwaddy	166	765
12	Kachin	422	723
13	Naypyitaw	2	415
14	Shan North	255	213
15	Chin	13	147
16	Kayah	18	139
17	Shan East	11	74
Total		3,250	24,770

COVID-19 confirmed cases among tested by date (as of 20.7.2020)

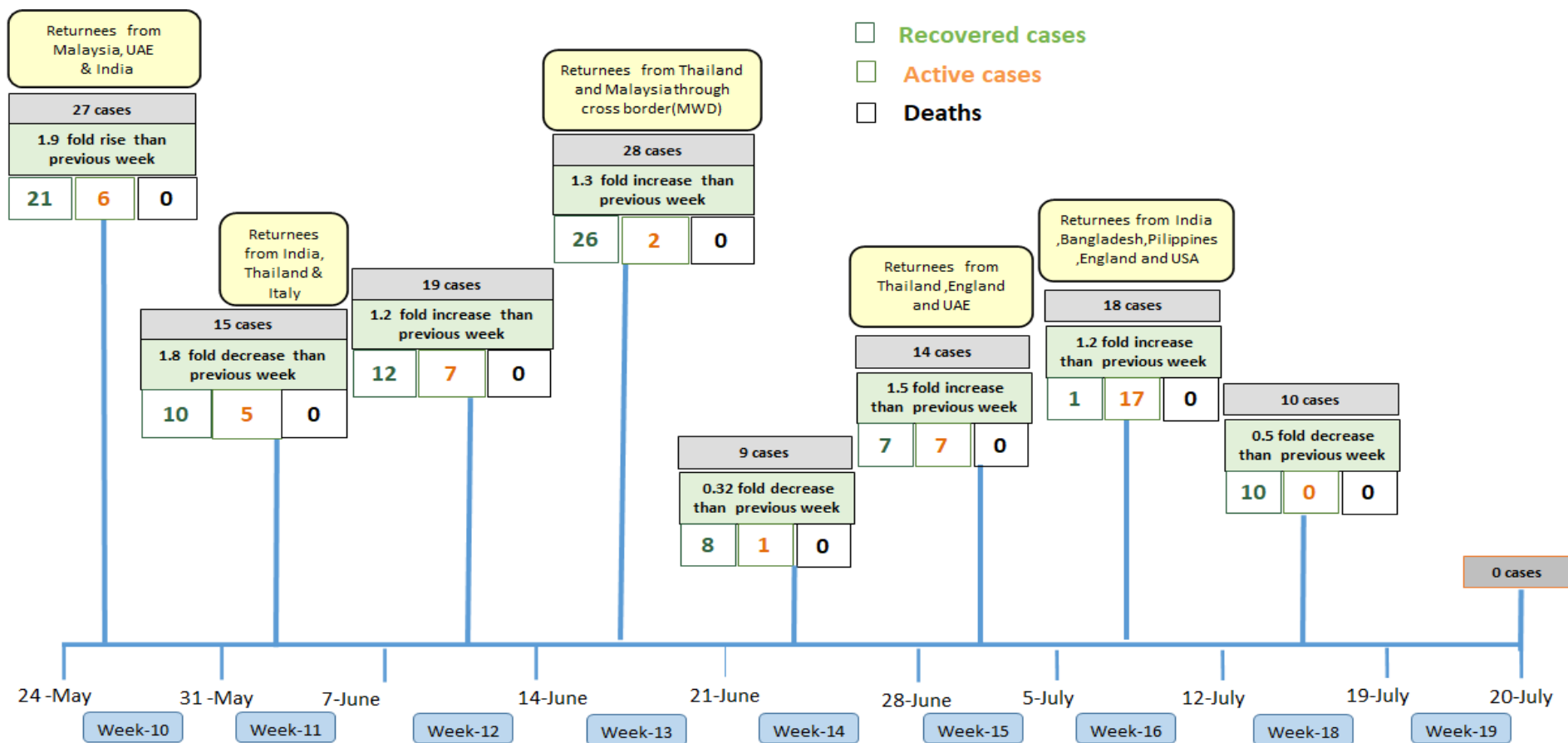


Summary of new confirmed cases detection after first two cases (as of 20.7.2020)



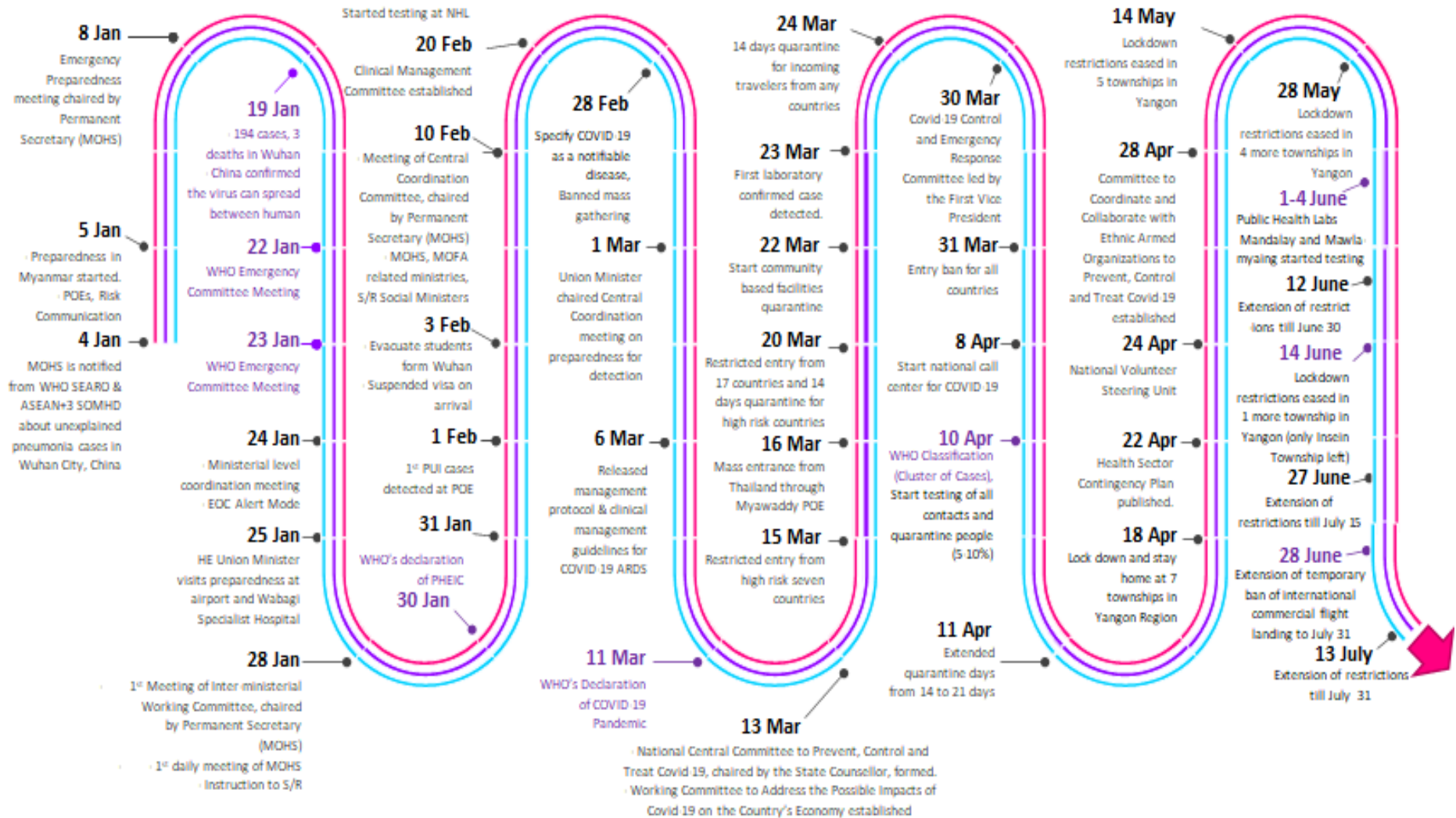
- Confirmed cases were detected as a peak in the 4th week after first confirmed cases due to the religious event cluster.
- Confirmed cases were decreased but still raised than the first 3 weeks due to the religious event cluster and workplace cluster.
- There were an increased in numbers of cases in the 7th week after the first two cases due to the household cluster linked with a religious cluster.
- Confirmed cases were detected by a nearly two-fold rise in the 9th and 10th weeks after the first two cases because of returnees coming back by relief flights.

Summary of new confirmed cases detection after first two cases (as of 20.7.2020)



- Confirmed cases were detected as a peak in the 4th week after first confirmed cases due to the religious event cluster.
- Confirmed cases were decreased but still raised than the first 3 weeks due to the religious event cluster and workplace cluster.
- There were an increased in numbers of cases in the 7th week after the first two cases due to the household cluster linked with a religious cluster.
- Confirmed cases were detected by a nearly two-fold rise in the 9th and 10th weeks after the first two cases because of returnees coming back by relief flights.

Timeline of Preparedness and Response to COVID-19 in Myanmar (as of 20.7.2020)



Hotline Number— 0673 420 268

Data source - CEU, DMS, NHL, PHL (MDY and MLM), DMR, DSGH, State and Region Health Departments