



Ministry of Health and Sports (Myanmar)

Department of Public Health

Central Epidemiology Unit

(25 May 2020)

Coronavirus Disease 2019 (COVID-19)

Situation Report - 48

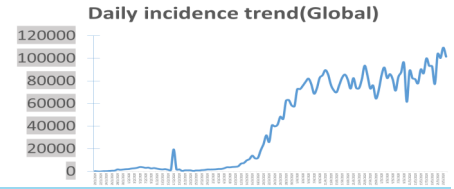
Data as reported by States and Regions by 00:30 AM MST 25 May 2020

Global Situation
(WHO situation report - 125)
data as of 14:30 MST 24 May 2020

Confirmed cases
5,204,508

Deaths
337,687

Case Fatality Rate
6.4%



Myanmar Situation

Total tested
19,549

Confirmed cases
201

Negative
19,348

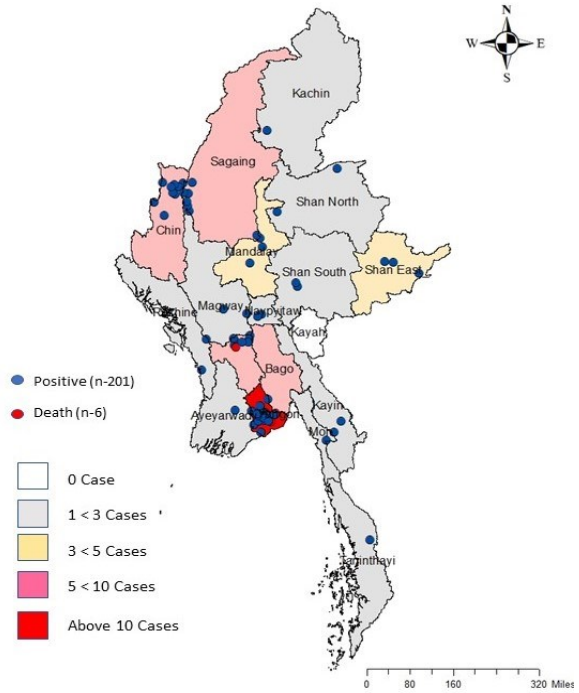
Recovered
123
61% of confirmed cases

Active
72
35.8% of confirmed cases

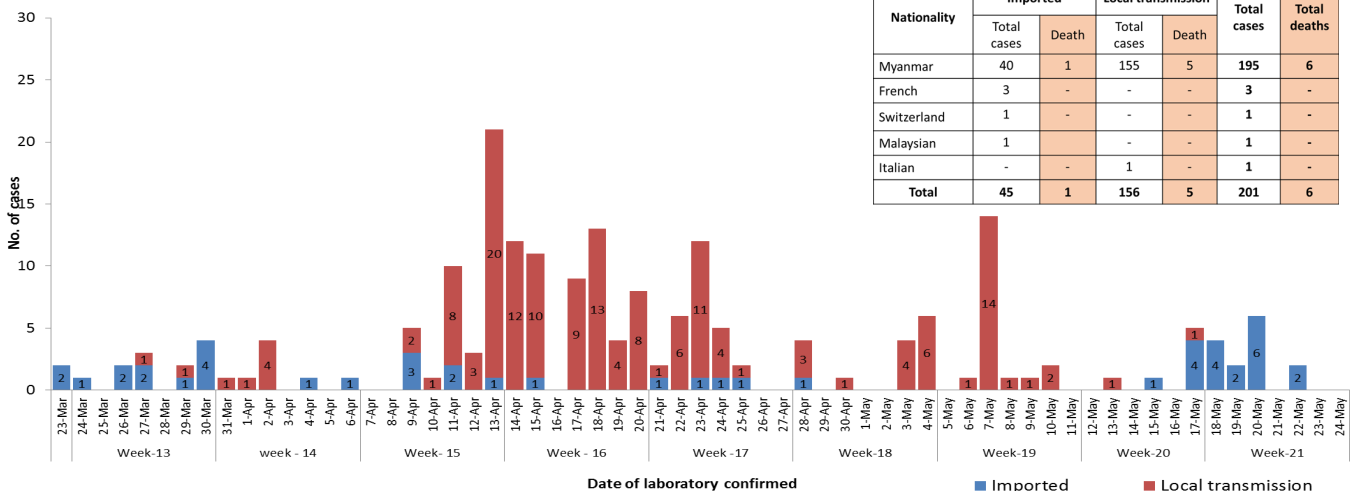
Death
6
2.9% of confirmed cases

| No. | State/Region | COVID-19 Confirmed case | Recovered | Deaths |
|--------------|--------------|-------------------------|---------------------|----------|
| 1. | Yangon | 156 | 95 (1 new) | 5 |
| 2. | Chin | 9 | 2 | - |
| 3. | Bago | 7 | 6 | 1 |
| 4. | Sagaing | 7 | 6 | - |
| 5. | Shan(East) | 3 | 2 | - |
| 6. | Mandalay | 3 | 3 | - |
| 7. | Shan(South) | 2 | 2 | - |
| 8. | Shan(North) | 2 | 2 | - |
| 9. | Naypyitaw | 2 | 2 | - |
| 10. | Kayin | 2 | - | - |
| 11. | Magway | 2 | 1 | - |
| 12. | Rakhine | 2 | - | - |
| 13. | Mon | 1 | 1 | - |
| 14. | Kachin | 1 | 1 | - |
| 15. | Thanintharyi | 1 | - | - |
| 16. | Ayeyarwaddy | 1 | - | - |
| 17. | Kayah | - | - | - |
| Total | | 201 | 123 (1 new) | 6 |

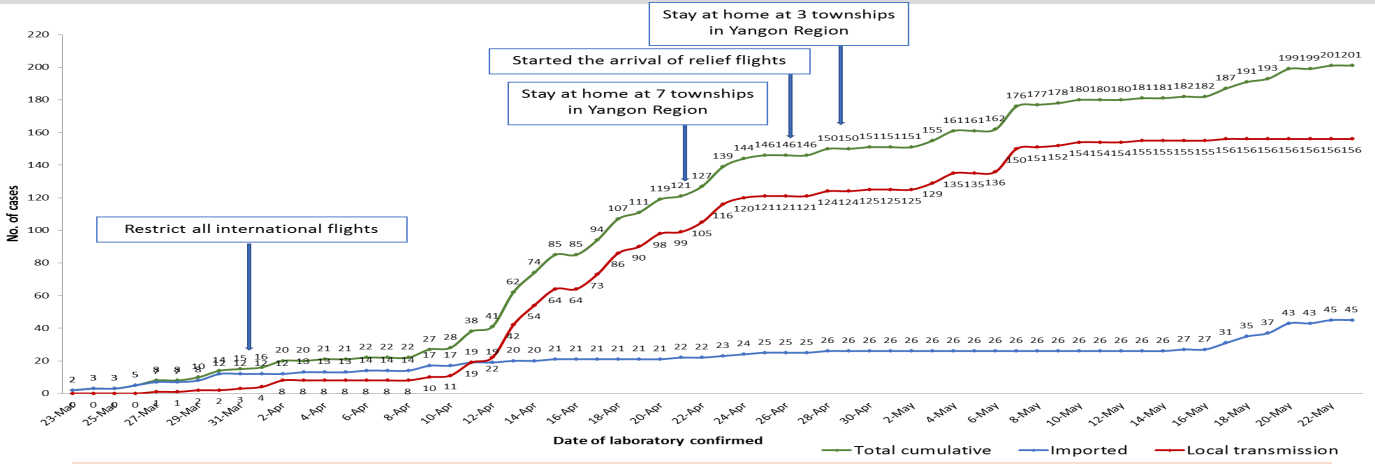
Map showing COVID-19 laboratory confirmed cases



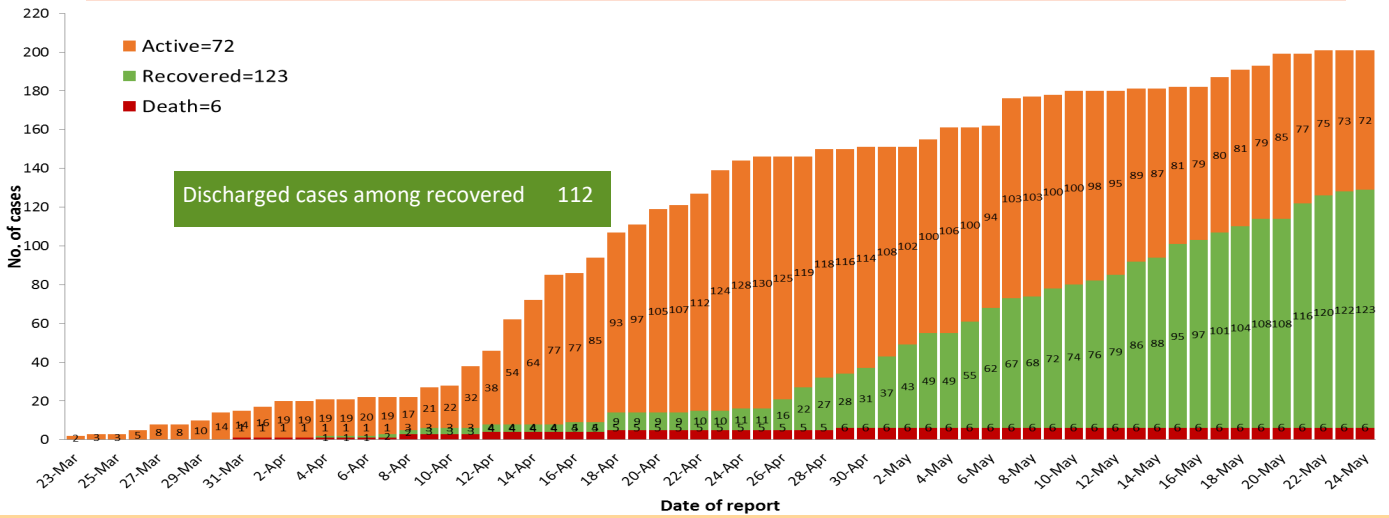
COVID-19 confirmed cases by types of transmissions (as of 25-5-2020,00:30 am)n=201



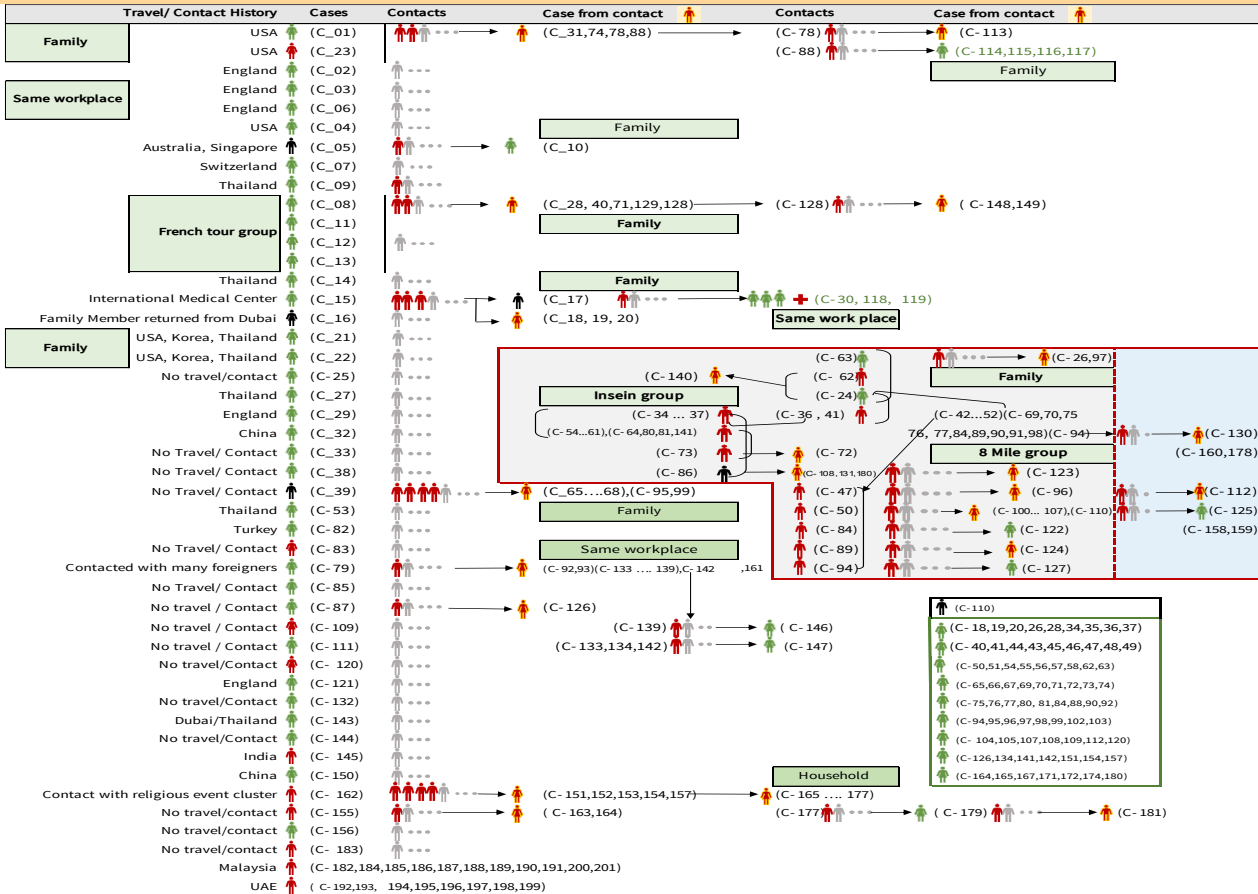
Total laboratory confirmed cases by date (as of 25.5.2020, 00:30 am), n= 201



Cumulative Number of active confirmed cases, recovered and death (23.3.2020-25.5.2020), n=201



Summary of COVID-19 confirmed cases (as of 24-5-2020), n= 3,944



Summary of current situation

| Type | New (23.5.2020-24.5.2020) | Total (on 24.5.2020) |
|--|------------------------------|-------------------------|
| Suspected and Person Under Investigation (PUI) | 45 | 291 |
| Hospital Quarantine | 3 | 109 |
| Facility Quarantine | 1,095 | 55,616 |

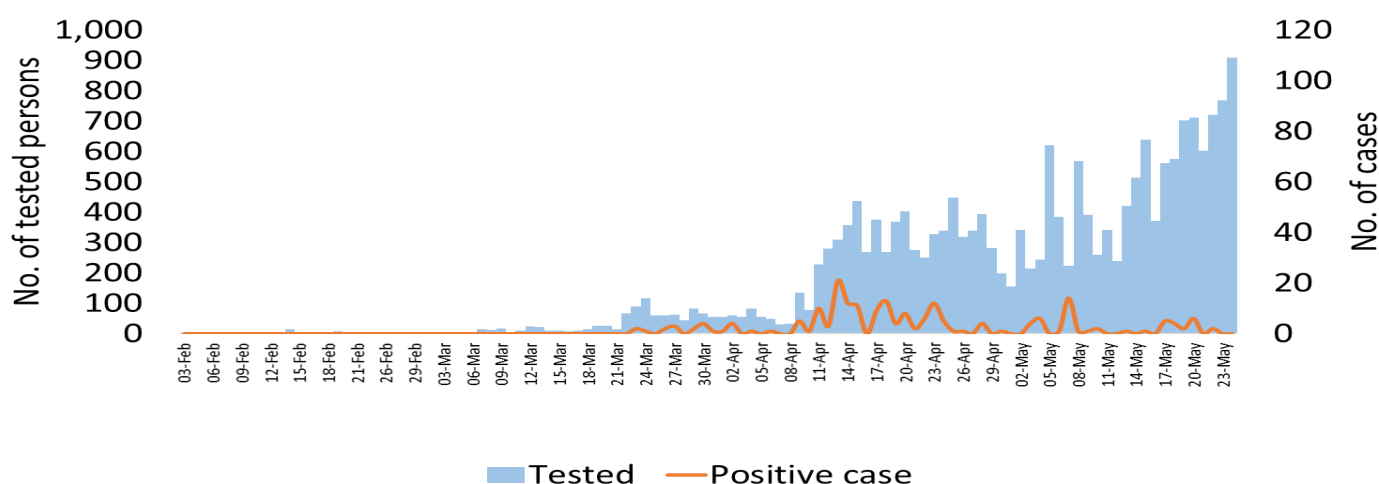
Person under Investigation (PUI) by State/Region hospitals (31.1.2020 – 24.5.2020) n= 4,691

| No. | State/Region | PUI |
|--------------|--------------|-------|
| 1. | Yangon | 2,439 |
| 2. | Mandalay | 820 |
| 3. | Shan (N) | 179 |
| 4. | Bago | 168 |
| 5. | Mon | 159 |
| 6. | Magway | 156 |
| 7. | Kayin | 151 |
| 8. | Shan (E) | 94 |
| 9. | Ayeyarwaddy | 92 |
| 10. | Shan (S) | 83 |
| 11. | Sagaing | 74 |
| 12. | Kayah | 67 |
| 13. | Naypyitaw | 60 |
| 14. | Rakhine | 54 |
| 15. | Tanintharyi | 50 |
| 16. | Kachin | 26 |
| 17. | Chin | 19 |
| Total | | 4,691 |

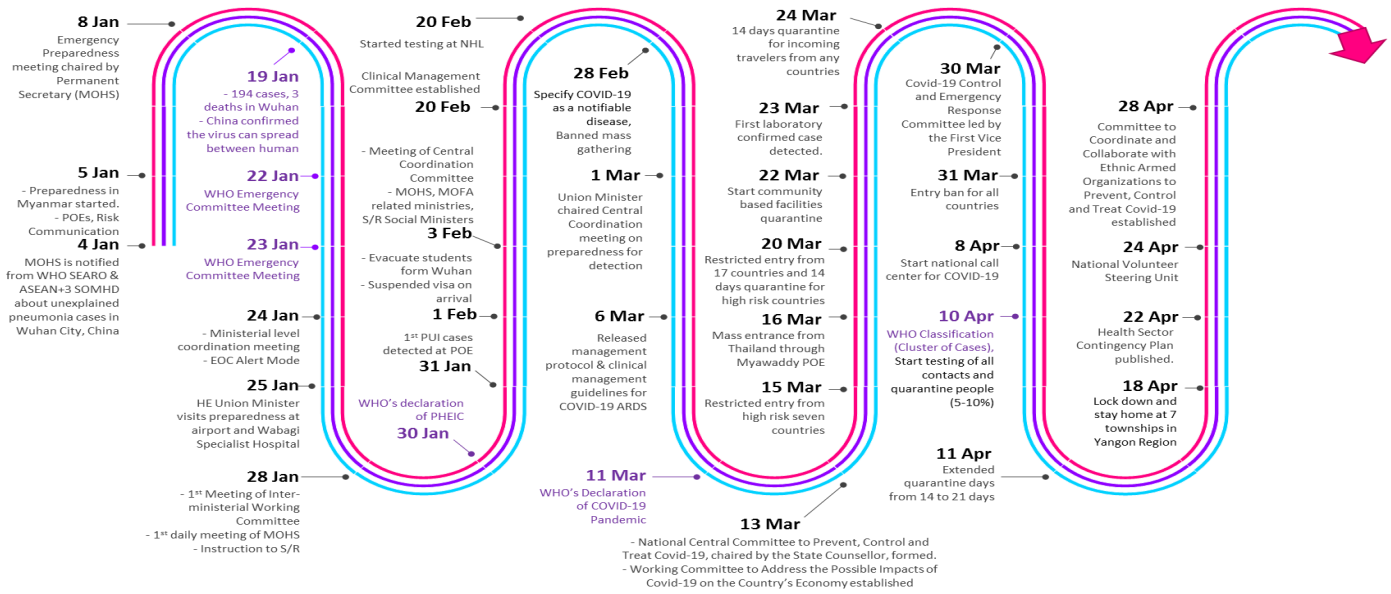
No. of Facility Quarantine sites and Quarantined people on 24.5.2020

| No. | State/Region | No. of facilities | Total no. of quarantine people |
|--------------|--------------|-------------------|--------------------------------|
| 1. | Magway | 2,871 | 11,596 |
| 2. | Sagaing | 2,105 | 8,720 |
| 3. | Kachin | 643 | 6,365 |
| 4. | Ayeyarwaddy | 1,374 | 5,094 |
| 5. | Mandalay | 829 | 4,478 |
| 6. | Rakhine | 783 | 4,452 |
| 7. | Bago | 507 | 3,449 |
| 8. | Yangon | 57 | 2,748 |
| 9. | Shan (N) | 353 | 2,623 |
| 10. | Tanintharyi | 189 | 1,529 |
| 11. | Shan(S) | 114 | 1,164 |
| 12. | Naypyitaw | 19 | 1,123 |
| 13. | Kayin | 172 | 719 |
| 14. | Shan (E) | 41 | 636 |
| 15. | Chin | 44 | 380 |
| 16. | Mon | 29 | 379 |
| 17. | Kayah | 18 | 161 |
| Total | | 10,148 | 55,616 |

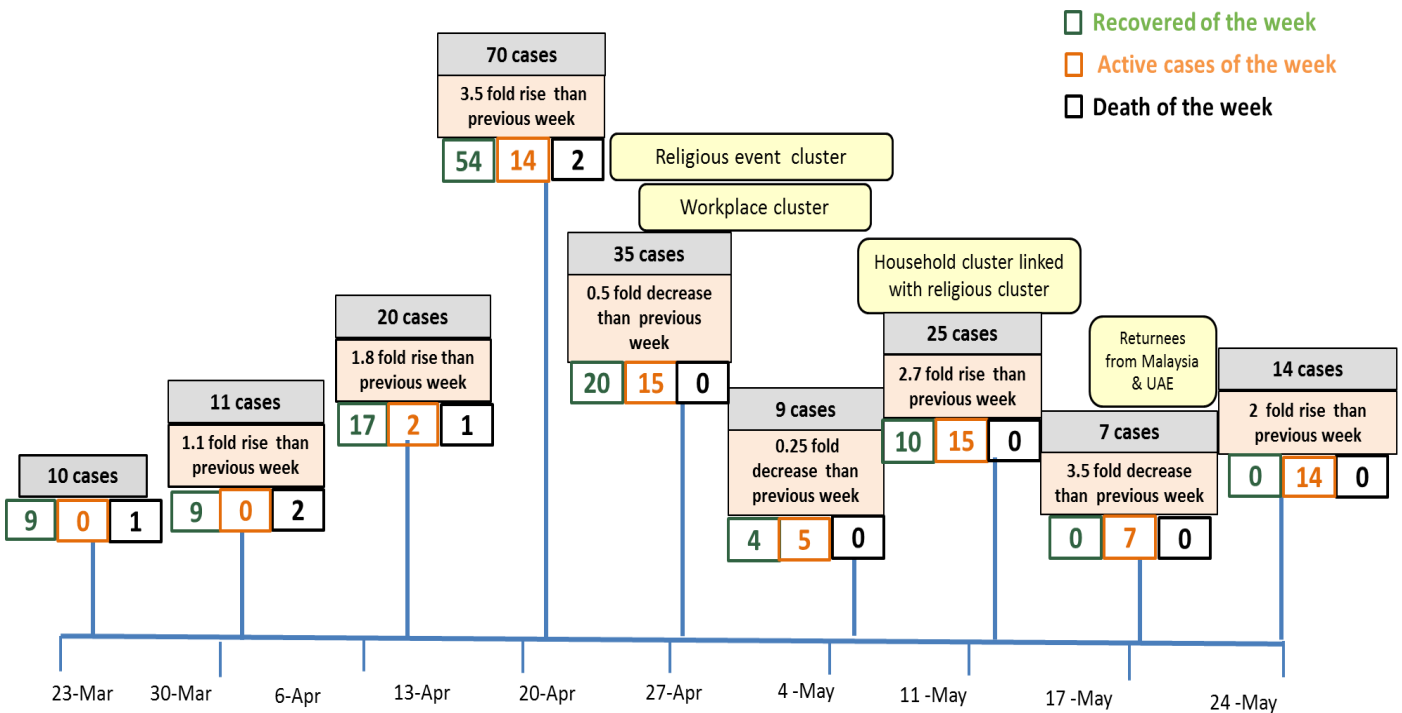
COVID-19 confirmed cases among tested by date (as of 24.5.2020)



Timeline of Preparedness and Response to COVID-19 in Myanmar (as of 24.5.2020)



Summary of new confirmed cases detection after first two cases (as of 24.5.2020)



- Confirmed cases were detected as peak in the 4th week after first confirmed cases due to religious event cluster .
- Confirmed cases were decreased but still raised than the first 3 weeks due to religious event cluster and workplace cluster.
- There were an increased in numbers of cases in week 7th after the first two cases due to household cluster linked with religious cluster.
- Confirmed cases were detected again in week 8 after the first two cases because of returnees .

Hotline Number— 0673 420 268

Data source - CEU, DMS, NHL, DMR, State and Region Health Departments