



Ministry of Health and Sports (Myanmar)

Department of Public Health

Central Epidemiology Unit

(20 July 2020)

Coronavirus Disease 2019 (COVID-19)

Situation Report - 104

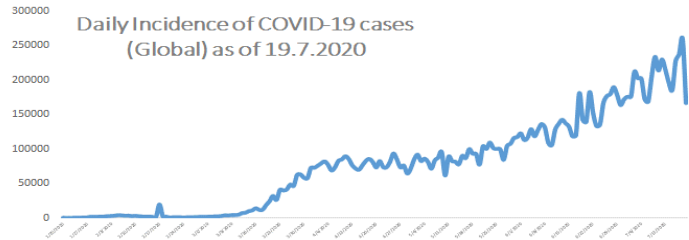
Data as reported by States and Regions by 10:00 PM MST 19 July 2020

Global Situation (WHO situation report - 181) data as of 23:00 MST 19 July 2020

Confirmed cases
14,043,176

Deaths
597,583

Case Fatality Rate
4.2 %



Myanmar Situation

Total Tested

103,888

Confirmed Cases

341

Negative

103,547

Recovered

278

81.5% of Confirmed cases

Active

57

16.7% of Confirmed cases

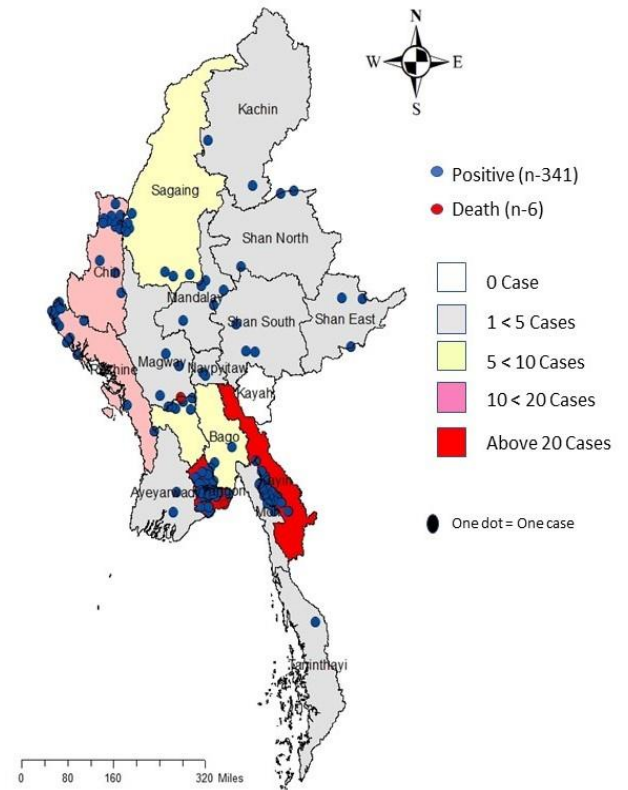
Death

6

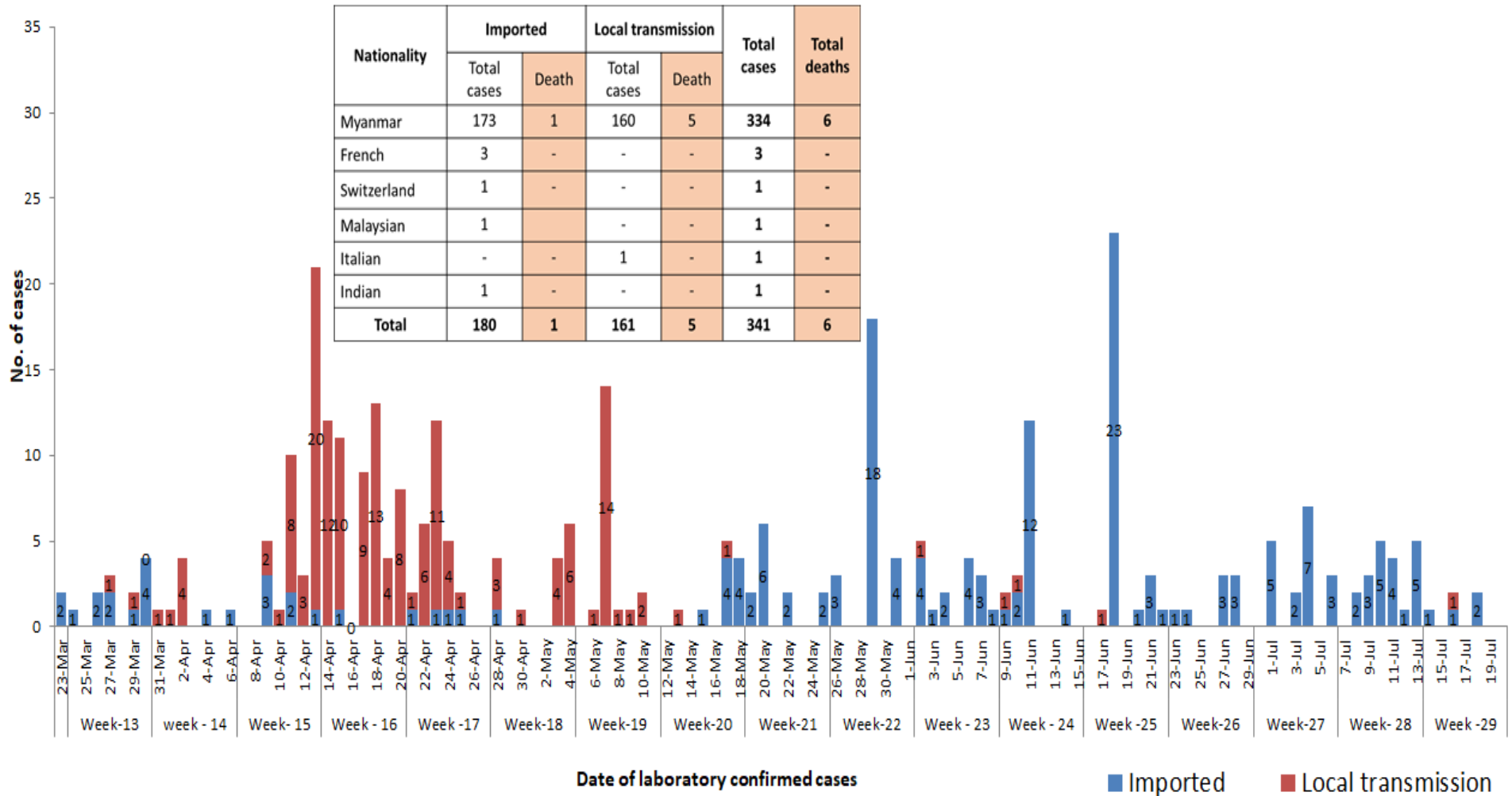
1.7% of Confirmed cases

No	State/Region	COVID –19 Confirmed case	Recovered	Deaths
1	Yangon	244	191(1 New)	5
2	Kayin	26	24	-
3	Rakhine	15	11(1 New)	-
4	Chin	12	10	-
5	Sagaing	9	9	-
6	Bago	9	8	1
7	Shan (South)	4	4	-
8	Mandalay	4	3	-
9	Shan (East)	3	3	-
10	Shan (North)	3	3	-
11	Magway	3	3	-
12	Naypyitaw	2	2	-
13	Ayeyarwaddy	2	2	-
14	Kachin	2	2	-
15	Mon	2	2	-
16	Thanintharyi	1	1	-
17	Kayah	-	-	-
Total		341	278(2 New)	6

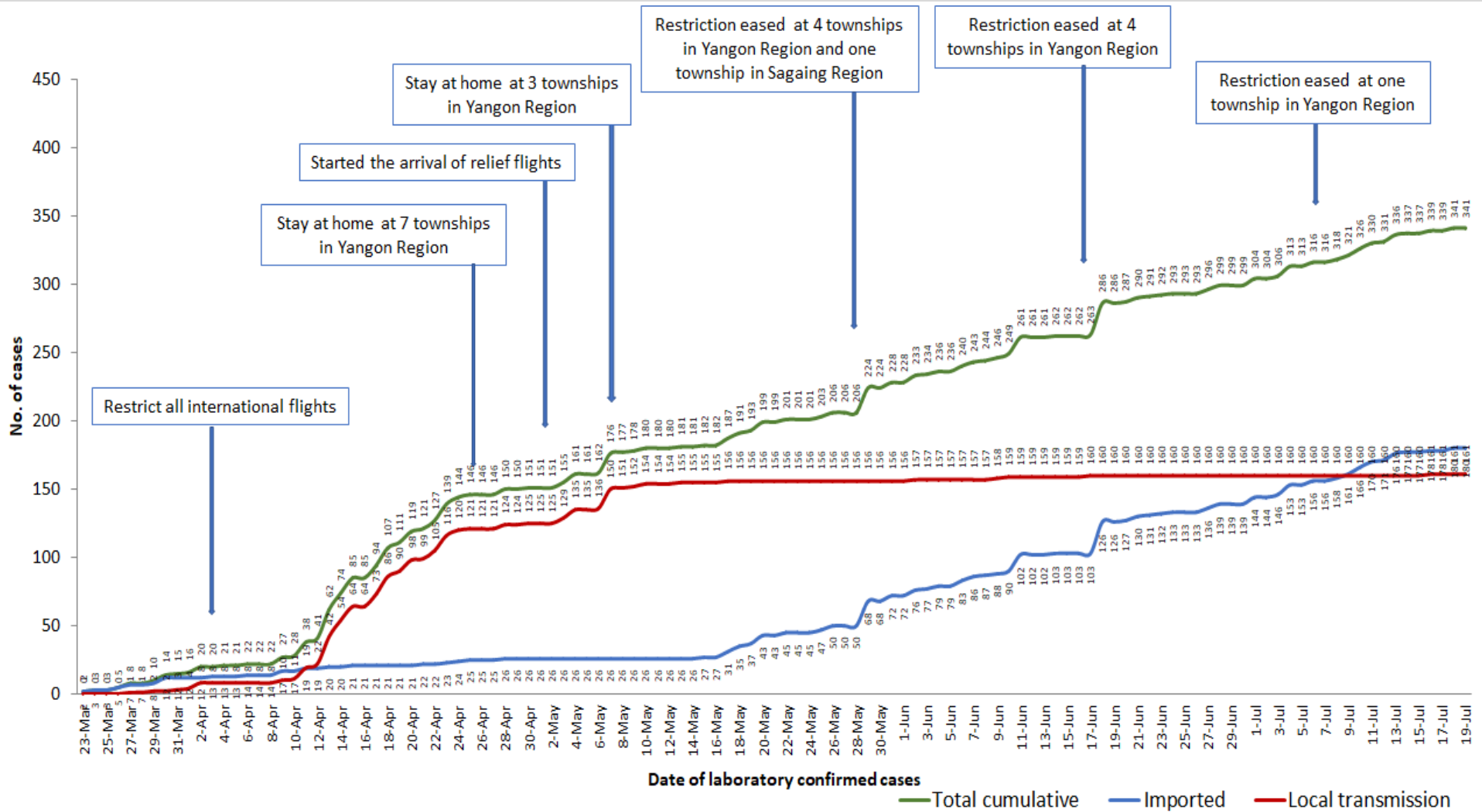
Map showing COVID-19 laboratory confirmed cases



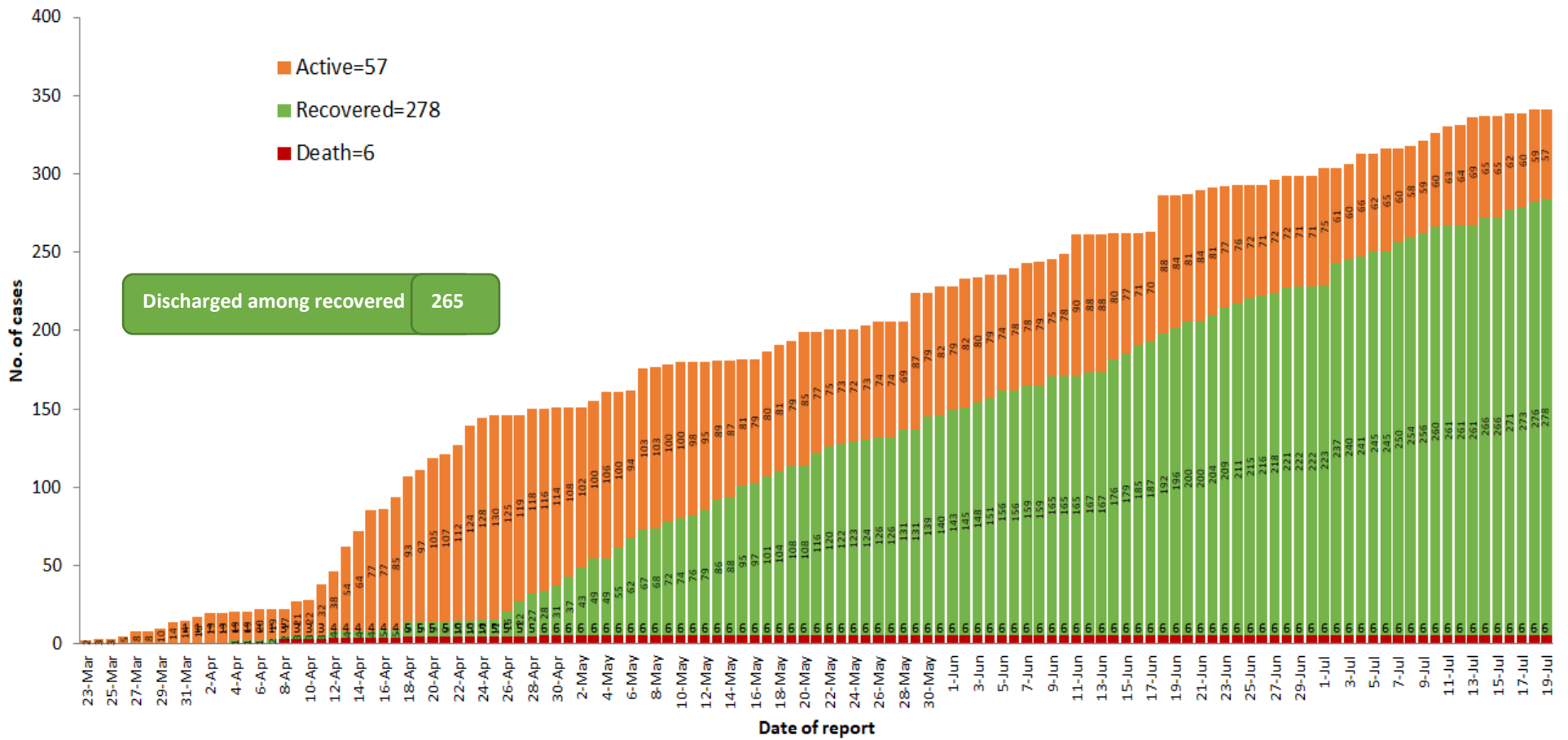
COVID-19 confirmed cases by types of transmissions (as of 19.7.2020, 10:00 pm) n=341



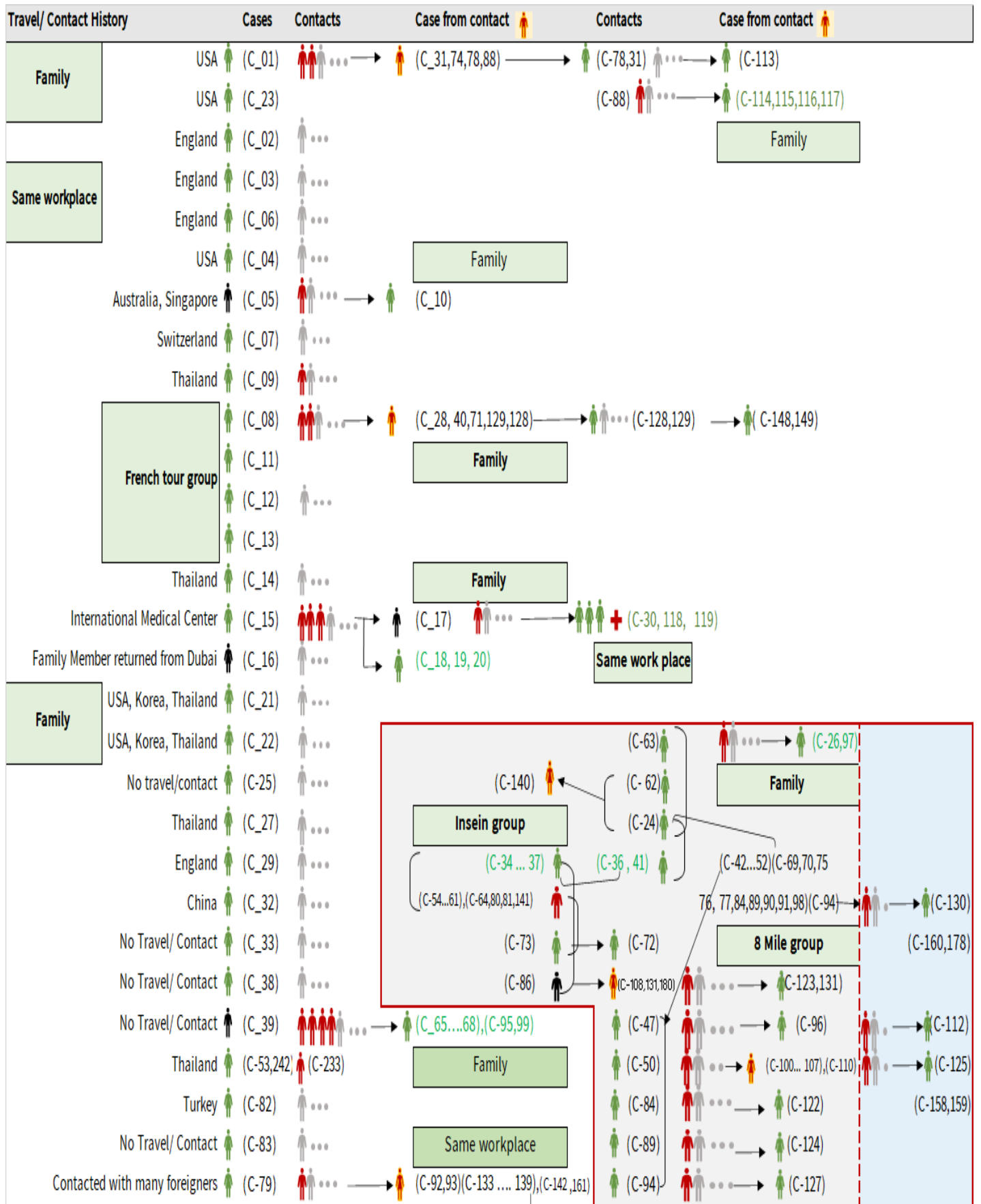
Total laboratory confirmed cases by date (as of 19.7.2020, 10:00 pm), n= 341



Cumulative Number of active confirmed cases, recovered and deaths (23.3.2020 – 19.7.2020), n (cumulative)=341



Summary of COVID-19 confirmed cases (as of 19.7.2020), n (contacts)= 5,748



Summary of COVID-19 confirmed cases (as of 19.7.2020), n (contacts)= 5,748

Travel/ Contact History	Cases	Contacts	Case from contact	Contacts	Case from contact
No Travel/ Contact	(C-85)	...			(C-110)
No travel / Contact	(C-87)	... →	(C-126)		(C-28,40,42,43,44,45,46,48,49,51,52)
No travel / Contact	(C-109)	...	(C-139) ... →	(C-146)	(C-54,55,56,57,58,60,61,63,64,69,70)
No travel / Contact	(C-111)	...	(C-133,134,142) ... →	(C-147)	(C-71,74,75,76,77,80,81,88,90,91,92,93)
No travel/Contact	(C-120)	...			(C-98,100,101,102,103,104,105,106,107,108)
England	(C-303,317,327) (C-121,302)				(C-133,134,135,136,137,138,139,140,141,142)
No travel/Contact	(C-132)	...			(C-151,152,153,154,157,158,159,160,161)
Dubai/Thailand	(C-143)	...			(C-164,165,167,168,170,171,172,174)
No travel/Contact	(C-144)	...			(C-178,184,189,191,193,205,207,216,217,218)
India	(C-145,204,209,210,213,220,221,223,224,229,225,227,228,252,255,259,296,299)				(C-226,233,234,235,237,246,253,258)
China	(C-150,230)				
Contact with religious event cluster	(C-162)	... →	(C-151,152,153,154,157)	(C-165 ... 177) (C-166,169,173,175,176,177)	
No travel/contact	(C-155)	... →	(C-163,164) (163)	(C-177) ... → (C-179) ... → (C-181)	
No travel/contact	(C-156)	...			
No travel/contact	(C-183)	...			
Malaysia	(C-184,189,273,280) (C-182,185,186,191,188,190,187,200,201,232,275,282)				
UAE	(C-300,301,315,316,337,340) (C-193,192,194,195,196,197,198,199,301,314)				
Italy	(C-243,202)				
No travel/Contact	(C-231)				
Bangladesh	(C-234,244,247,250,262,293,308,309,310,325,326,334) (C-244,245,247,248,250,262,291,292)				
No travel/contact	(C-245)	...			
No travel/contact	(C-249)				
No travel/contact	(C-263)	...			
Thailand	(C-269,279,332,333,335,336,338) (C-264,265,266,267,268,270,271,272,273,274,276,277,278,280,281,283,284,285,286,287,294,304,312)				
Quata	(C-288) (C-289,290)				
India	(C-203,205...219,221... 229,235...240,241,246,251,253,254...258,260,261,295,297,298,305,306,307,318,322,323,324,328,329,330)				
Lao	(C-311)	...			
Singapore	(C-313)	...			
Philippines	(C-319,320,321) ...				
USA	(C-331)	...			
No travel/contact	(C-339)	...			

Summary of current situation

Type	New (18.7.2020-19.7.2020)	Total (on 19.7.2020)
Suspected and Person Under Investigation (PUI)	29	184
Hospital Quarantine	7	48
Facility Quarantine	618	22,149

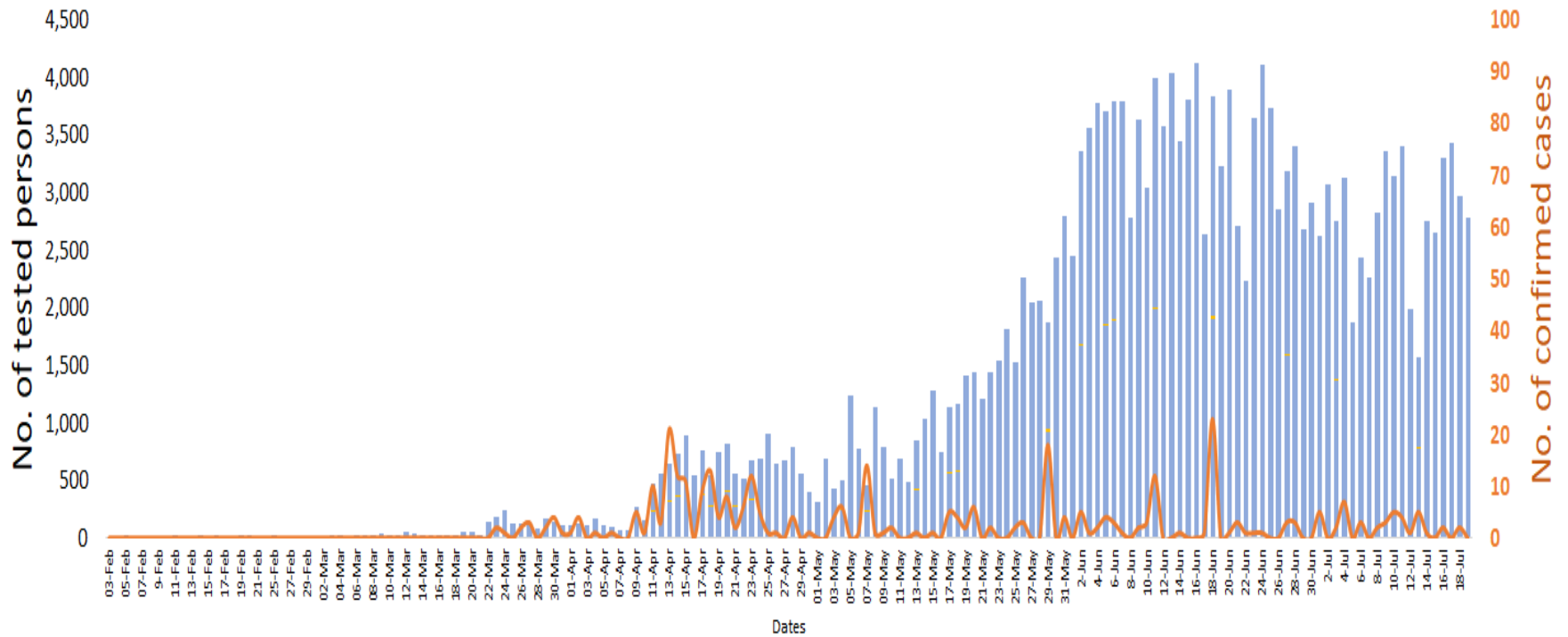
Person under Investigation (PUI) by State/Region hospitals (31.1.2020 – 19.7.2020) n= 6,540

No.	State/Region	PUI
1	Yangon	3,308
2	Mandalay	1,323
3	Kayin	275
4	Mon	262
5	Shan (N)	221
6	Magway	210
7	Bago	180
8	Shan (E)	123
9	Ayeyarwaddy	102
10	Shan (S)	99
11	Sagaing	90
12	Kayah	80
13	Thanintharyi	70
14	Rakhine	68
15	Naypyitaw	64
16	Kachin	38
17	Chin	27
Total		6,540

No. of Facility Quarantine sites and Quarantined people on 19.7.2020

No.	State/Region	No. of facilities	Total no. of quarantine
1	Yangon	64	3,621
2	Bago	270	3,048
3	Mon	281	2,800
4	Kayin	364	2,703
5	Magway	307	1,856
6	Tanintharyi	189	1,799
7	Sagaing	181	1,126
8	Mandalay	88	1,089
9	Rakhine	281	914
10	Shan South	116	749
11	Ayeyarwaddy	166	736
12	Kachin	422	730
13	Naypyitaw	2	415
14	Shan North	255	213
15	Chin	13	146
16	Kayah	18	130
17	Shan East	11	74
Total		3,028	22,149

COVID-19 confirmed cases among tested by date (as of 19.7.2020)

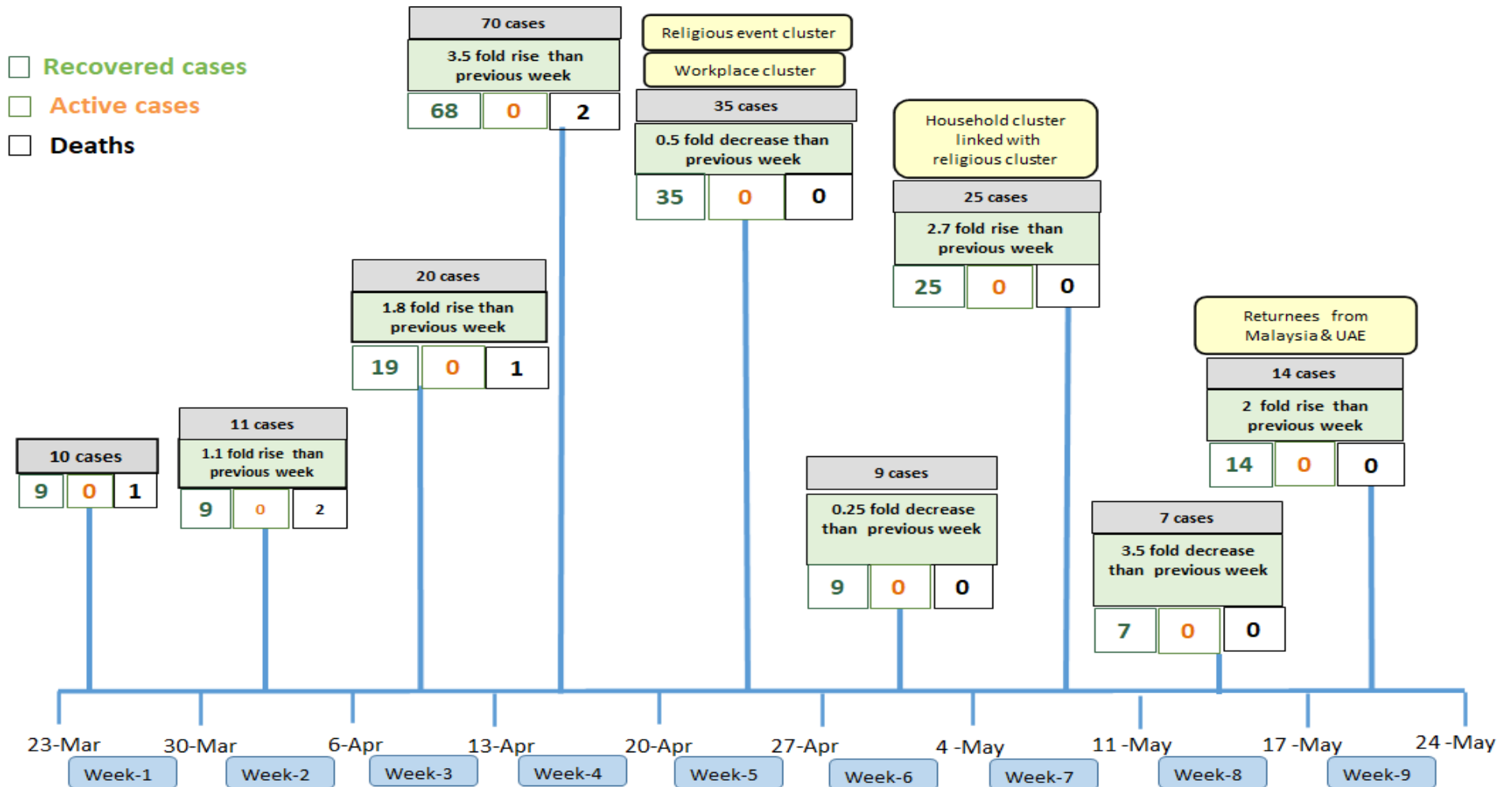


Total tested persons - 103,888

Total confirmed cases - 341

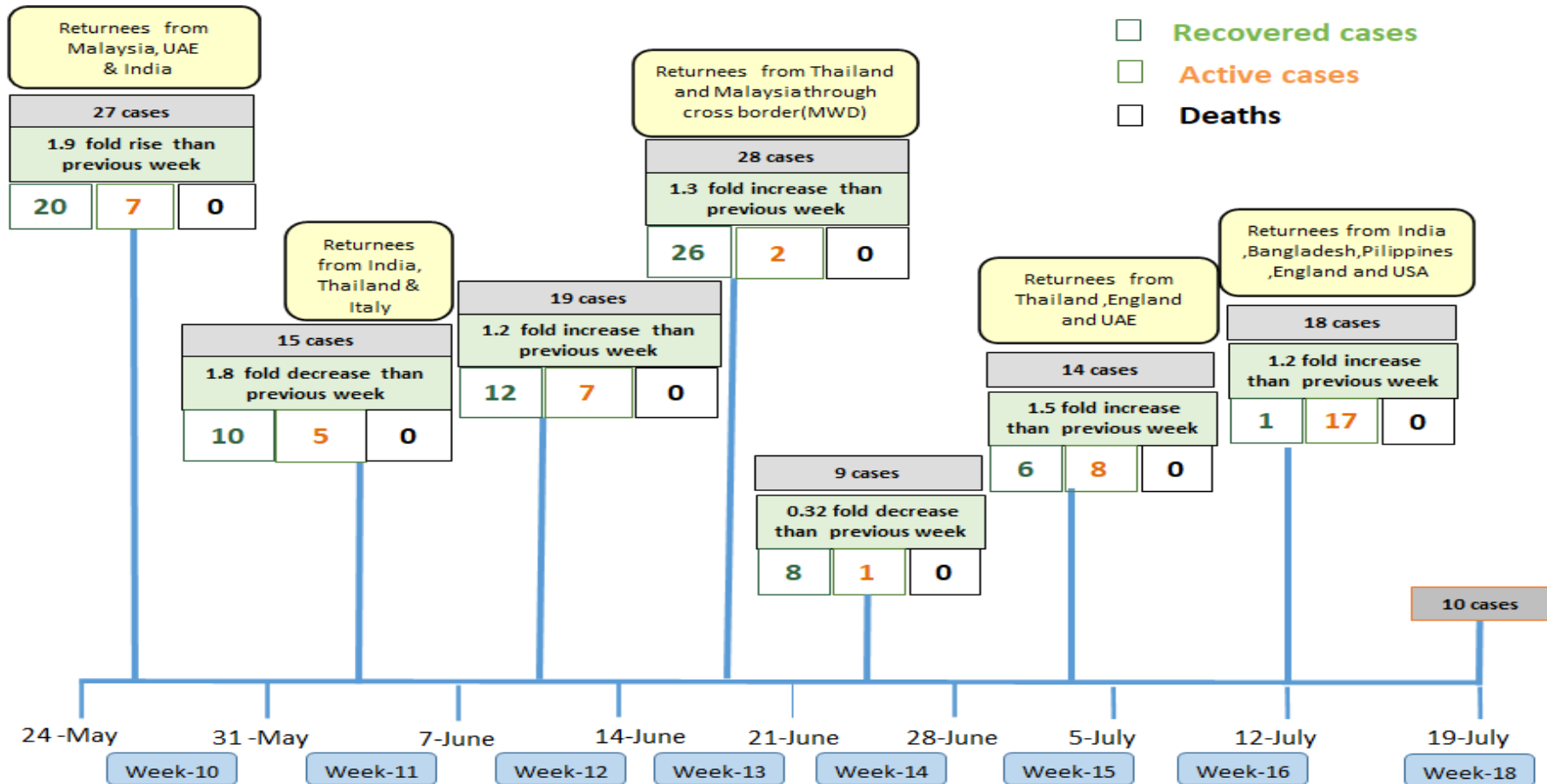
■ Tested person
 ■ Confirmed case
 ■ Tested person
 — Confirmed case

Summary of new confirmed cases detection after first two cases (as of 19.7.2020)



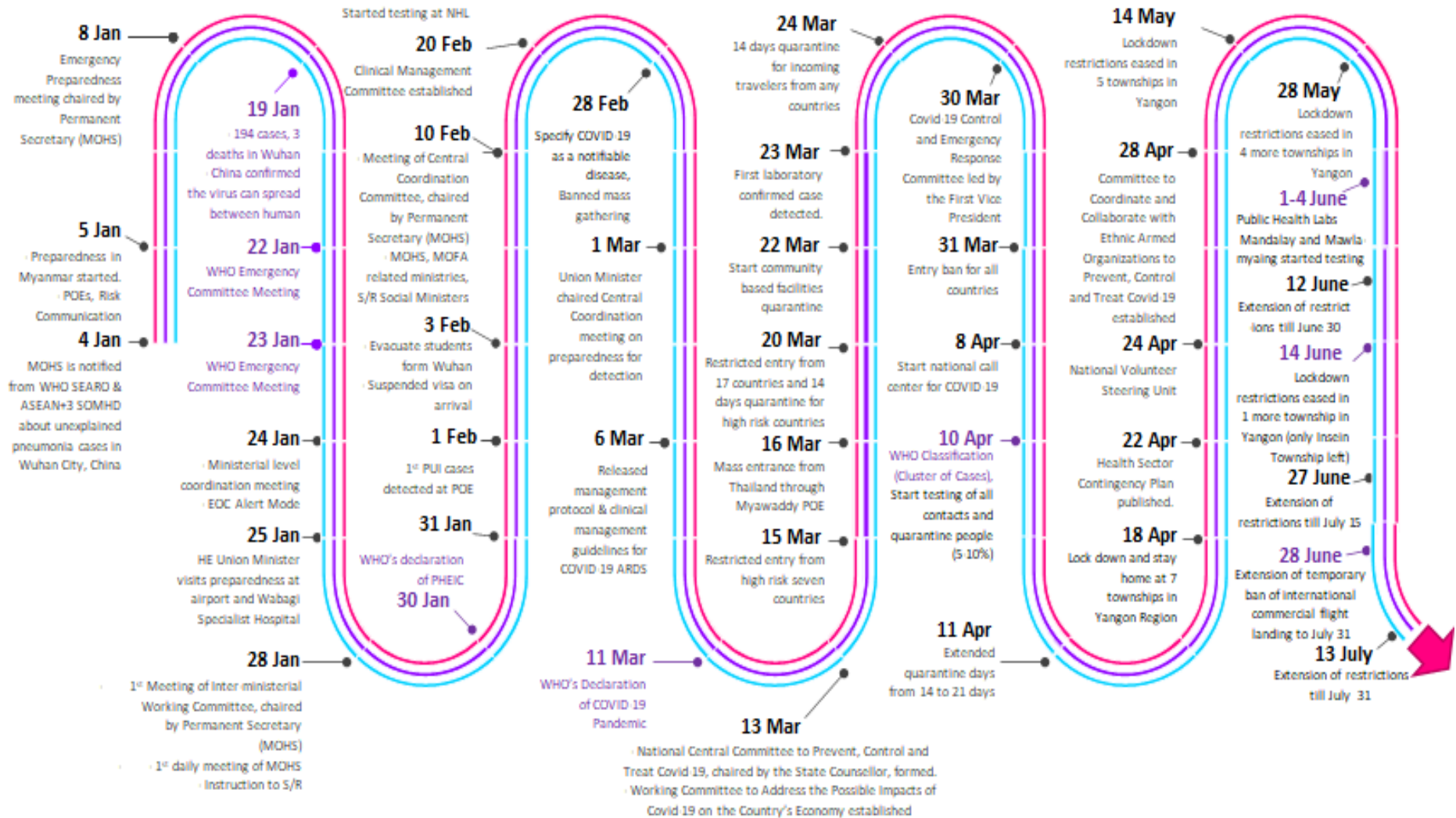
- Confirmed cases were detected as a peak in the 4th week after first confirmed cases due to the religious event cluster.
- Confirmed cases were decreased but still raised than the first 3 weeks due to the religious event cluster and workplace cluster.
- There were an increased in numbers of cases in the 7th week after the first two cases due to the household cluster linked with a religious cluster.
- Confirmed cases were detected by a nearly two-fold rise in the 9th and 10th weeks after the first two cases because of returnees coming back by relief flights.

Summary of new confirmed cases detection after first two cases (as of 19.7.2020)



- Confirmed cases were detected as a peak in the 4th week after first confirmed cases due to the religious event cluster.
- Confirmed cases were decreased but still raised than the first 3 weeks due to the religious event cluster and workplace cluster.
- There were an increased in numbers of cases in the 7th week after the first two cases due to the household cluster linked with a religious cluster.
- Confirmed cases were detected by a nearly two-fold rise in the 9th and 10th weeks after the first two cases because of returnees coming back by relief flights.

Timeline of Preparedness and Response to COVID-19 in Myanmar (as of 19.7.2020)



Hotline Number— 0673 420 268

Data source - CEU, DMS, NHL, PHL (MDY and MLM), DMR, DSGH, State and Region Health Departments