



# Ministry of Health and Sports (Myanmar)

## Department of Public Health

### Central Epidemiology Unit

(1 August 2020)

### Coronavirus Disease 2019 (COVID-19)

Situation Report - 116

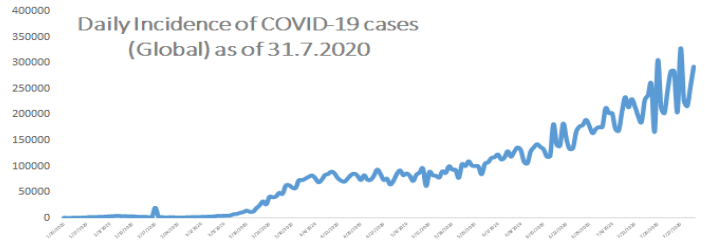
Data as reported by States and Regions by 9:00 PM MST 31 July 2020

**Global Situation (WHO situation report - 193) data as of 14:30 MST 31 July 2020**

**Confirmed cases**  
**17,106,007**

**Deaths**  
**668,910**

**Case Fatality Rate**  
**3.9 %**



### Myanmar Situation

Total Tested

**117,219**

Confirmed Cases

**353**

Negative

**116,866**

Recovered

**297**

84.1% of Confirmed cases

Active

**50**

14.1% of Confirmed cases

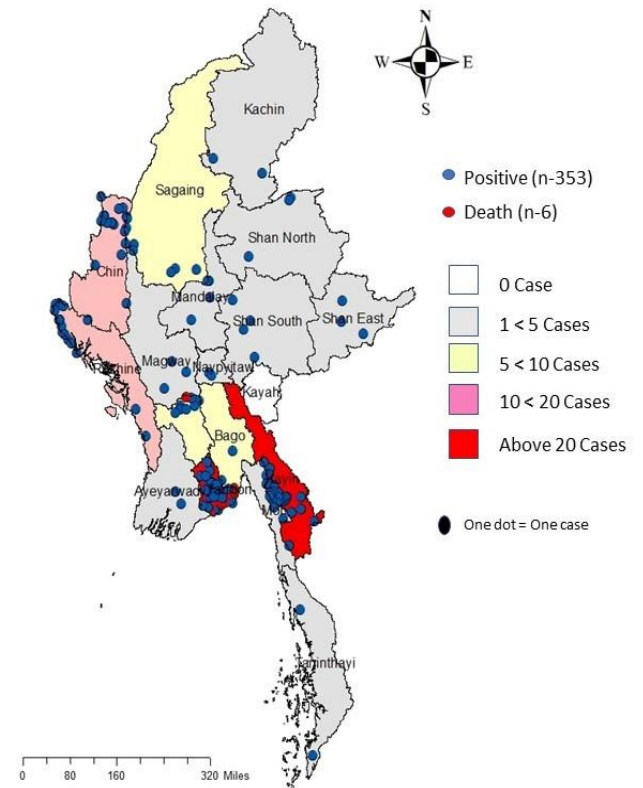
Death

**6**

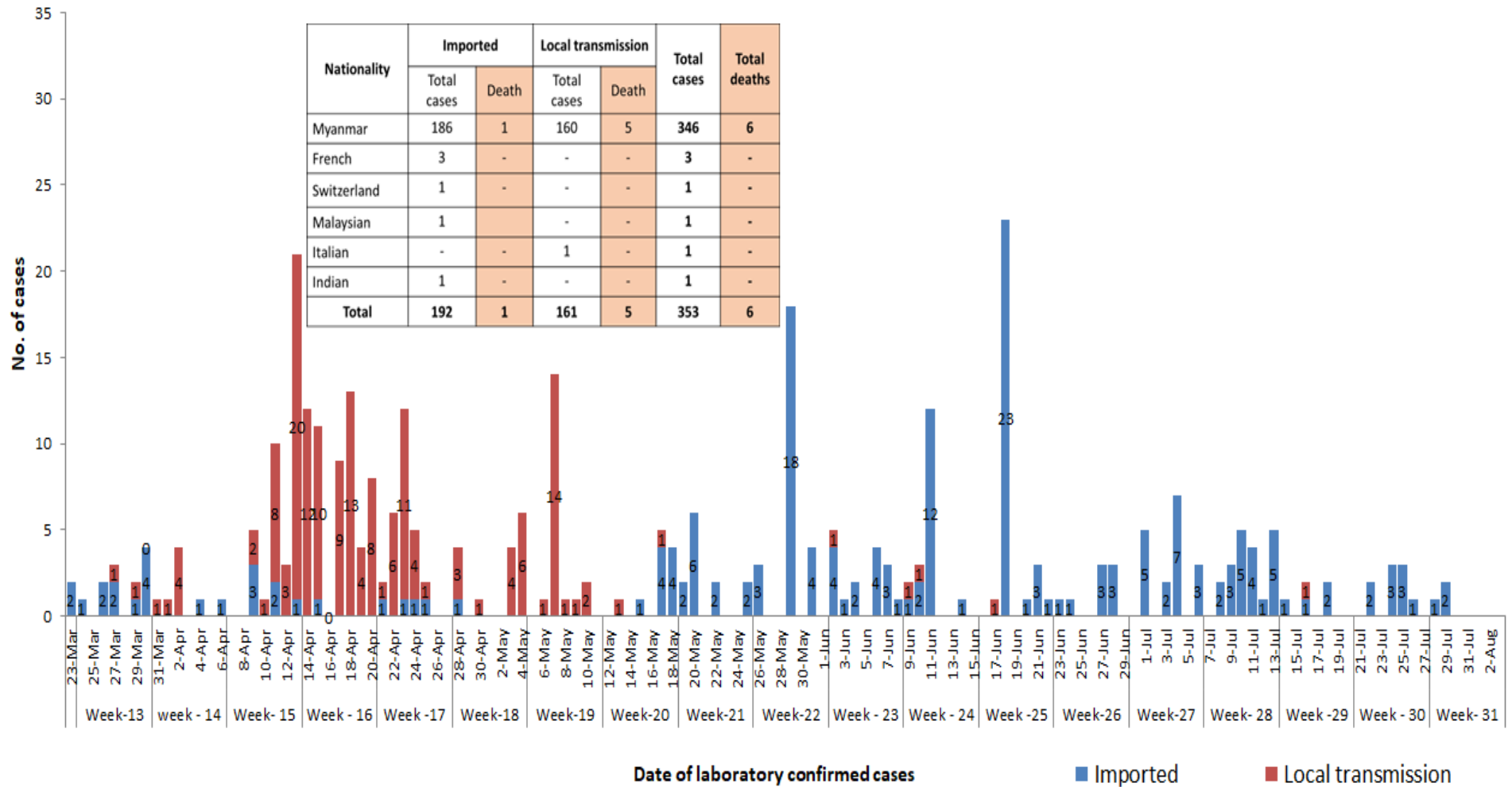
1.7% of Confirmed cases

No	State/Region	COVID –19 Confirmed case	Recovered	Deaths
1	Yangon	249	205(1 New)	5
2	Kayin	29	24	-
3	Rakhine	16	14	-
4	Chin	14	11	-
5	Sagaing	9	9	-
6	Bago	9	8	1
7	Shan (South)	4	4	-
8	Mandalay	4	4	-
9	Shan (East)	3	3	-
10	Shan (North)	3	3	-
11	Magway	3	3	-
12	Naypyitaw	2	2	-
13	Ayeyarwaddy	2	2	-
14	Kachin	2	2	-
15	Mon	2	2	-
16	Thanintharyi	2	1	-
17	Kayah	-	-	-
<b>Total</b>		<b>353</b>	<b>297(1 New)</b>	<b>6</b>

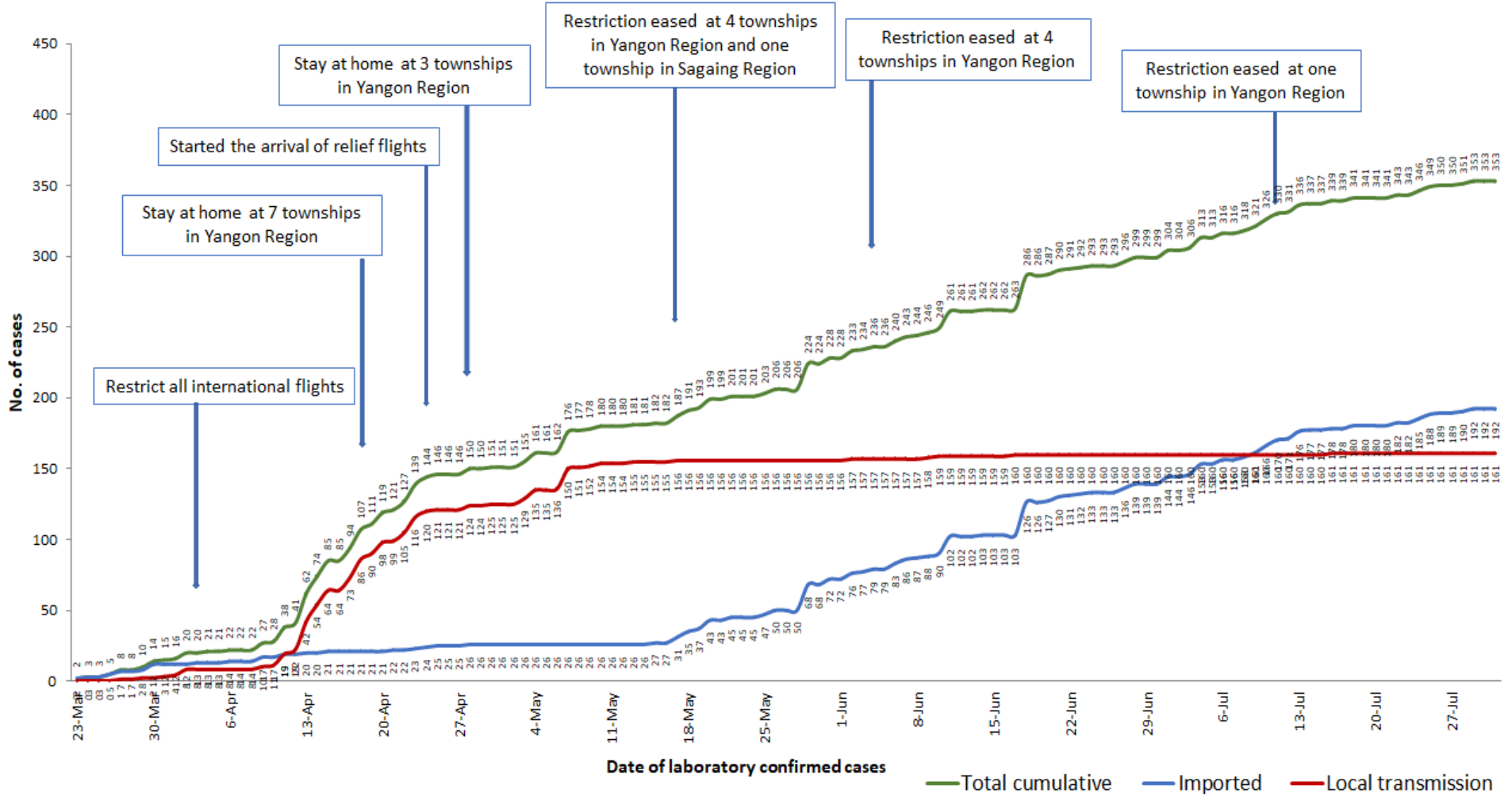
Map showing COVID-19 laboratory confirmed cases



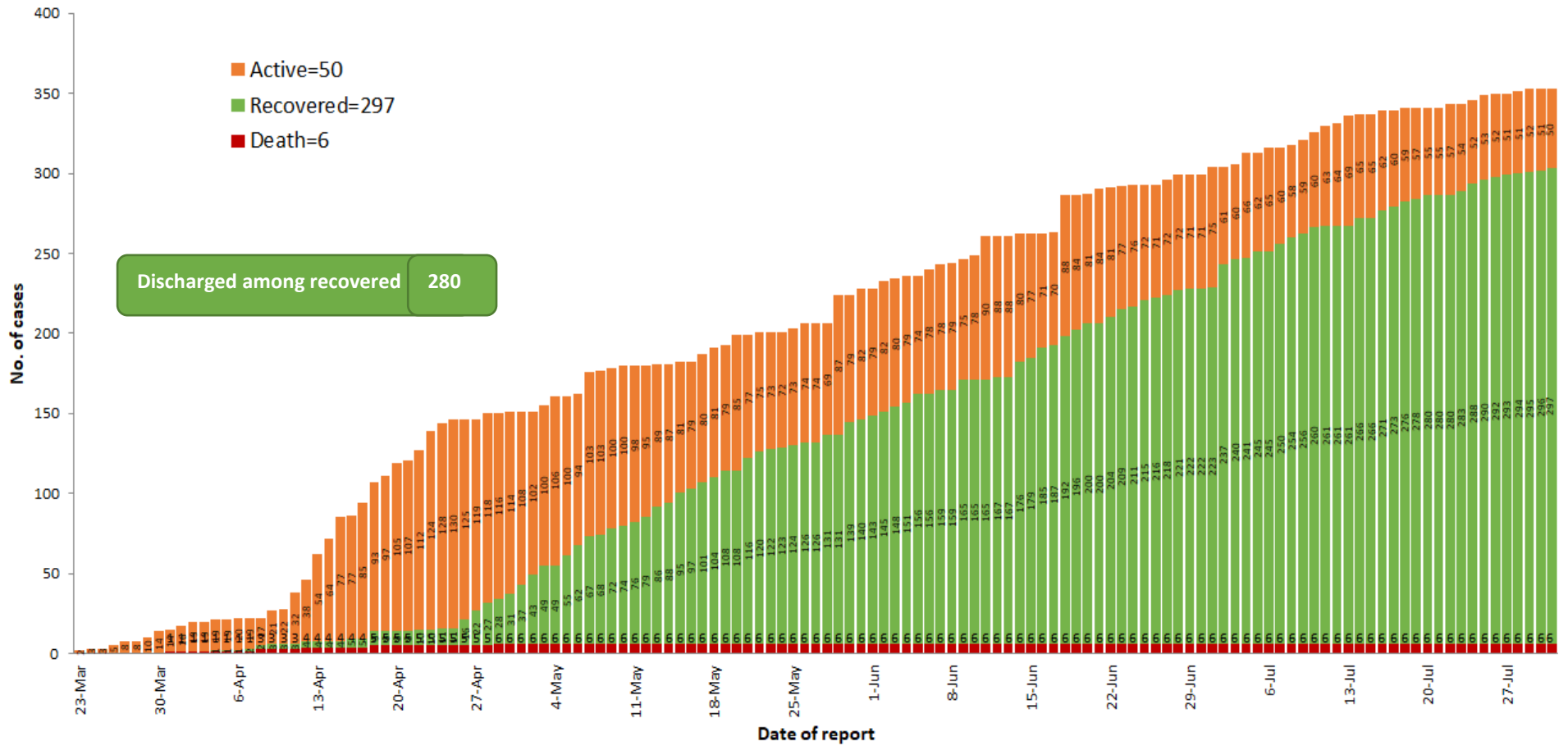
# COVID-19 confirmed cases by types of transmissions (as of 31.7.2020, 9:00 pm) n=353



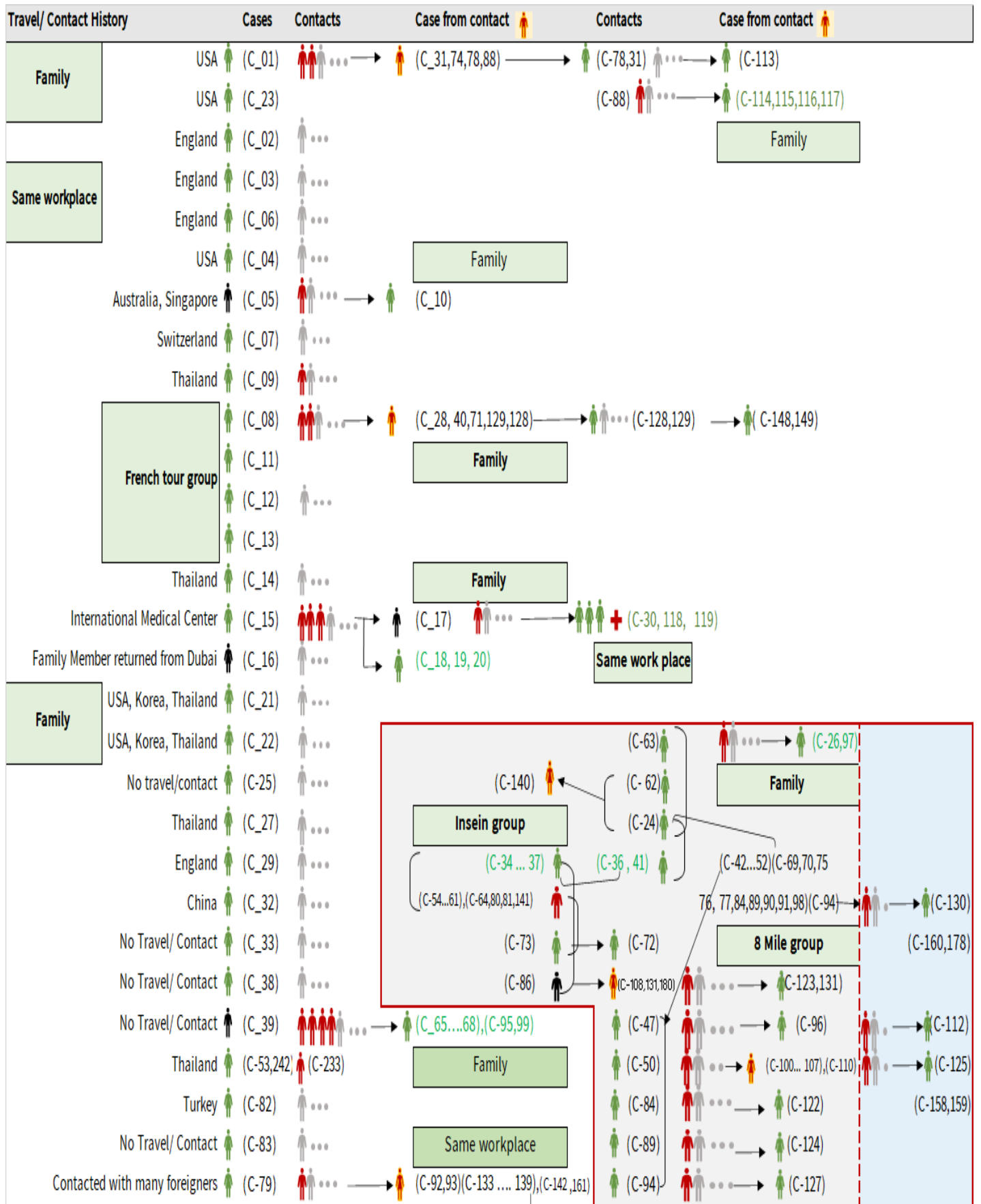
# Total laboratory confirmed cases by date (as of 31.7.2020, 9:00 pm), n= 353



# Cumulative Number of active confirmed cases, recovered and deaths (23.3.2020 – 31.7.2020), n (cumulative)=353



# Summary of COVID-19 confirmed cases (as of 31.7.2020), n (contacts)= 5,781



## Summary of COVID-19 confirmed cases (as of 31.7.2020), n (contacts)= 5,781

Travel/ Contact History	Cases	Contacts	Case from contact	Contacts	Case from contact
No Travel/ Contact	(C-85)	...			(C-110)
No travel / Contact	(C-87)	... →	(C-126)		(C-28,40,42,43,44,45,46,48,49,51,52)
No travel / Contact	(C-109)	...	(C-139)	... →	(C-146)
No travel / Contact	(C-111)	...	(C-133,134,142)	... →	(C-147)
No travel/Contact	(C- 120)	...			(C-98,100,101,102,103,104,105,106,107,108)
England	(C-327)	(C-121,302,303,317)			(C- 133,134,135,136,137,138,139,140,141,142)
No travel/Contact	(C-132)	...			(C-151,152,153,154,157,158,159,160,161)
Dubai/Thailand	(C-143)	...			(C-164,165,167,168,170,171,172,174)
No travel/Contact	(C-144)	...			(C-178,184,189,191,193,205,207,216,217,218)
India	(C- 145,204,209,210,212,213,215,220,221,223,224,229,225,227,228,252,255,259,296,299,305,306,3				(C-226,233,234,235,237,246,253,258)
China	(C-150,230)			<div style="border: 1px solid black; padding: 2px;">Household</div>	
Contact with religious event cluster	(C- 162)	... →	(C-151,152,153,154,157)	→  (C-165 .... 177)	(C-166,169,173,175,176,177)
No travel/contact	(C-155)	... →	(C-163,164)	(163)	(C-177)   ... →  (C-179)   ... →  (C-181)
No travel/contact	(C-156)	...			
No travel/contact	(C- 183)	...			
Malaysia	(C-184,189,273,280,351,353)	(C-182,185,186,191,188,190,187,200,201,232,275,282)			
UAE	(C-301,315,316,337)	(C-193,192,194,195,196,197,198,199,300,301,314,340)			
Italy	(C-243,202)				
No travel/Contact	(C- 231)				
Bangladesh	(C-234,244,247,250,262,309,310,326,334,348)	(C-244,245,247,248,250,262,291,292,293,308,325)			
No travel/contact	(C-245)	...			
No travel/contact	(C-249)				
No travel/contact	(C-263)	...			
Thailand	(C-269,279,332,333,335,346,349,352)	(C-264,265,266,267,268,270,271,272,273,274,276,277,278,280,281,283,284,285,286,287,294,304,312,336,338)			
Quata	(C-288)	(C-289,290)			
India	(C-203,205.....214,216...219,221.... 229,....240,241,246,251,253,254....258,260,261,295,297,298,307,322,323,324,344,345)	(C-328,329,330)			
Lao	(C-311)	...			
Singapore	(C-313)	...			
Philippines	(C-319,321,342,343)	(C-320)			
USA	(C-331,347,350)	...			
No travel/contact	(C-339)	...			

### Summary of current situation

Type	New (30.7.2020-31.7.2020)	Total (on 31.7.2020)
<b>Suspected and Person Under Investigation (PUI)</b>	<b>15</b>	<b>135</b>
<b>Hospital Quarantine</b>	<b>6</b>	<b>42</b>
<b>Facility Quarantine</b>	<b>730</b>	<b>18,898</b>

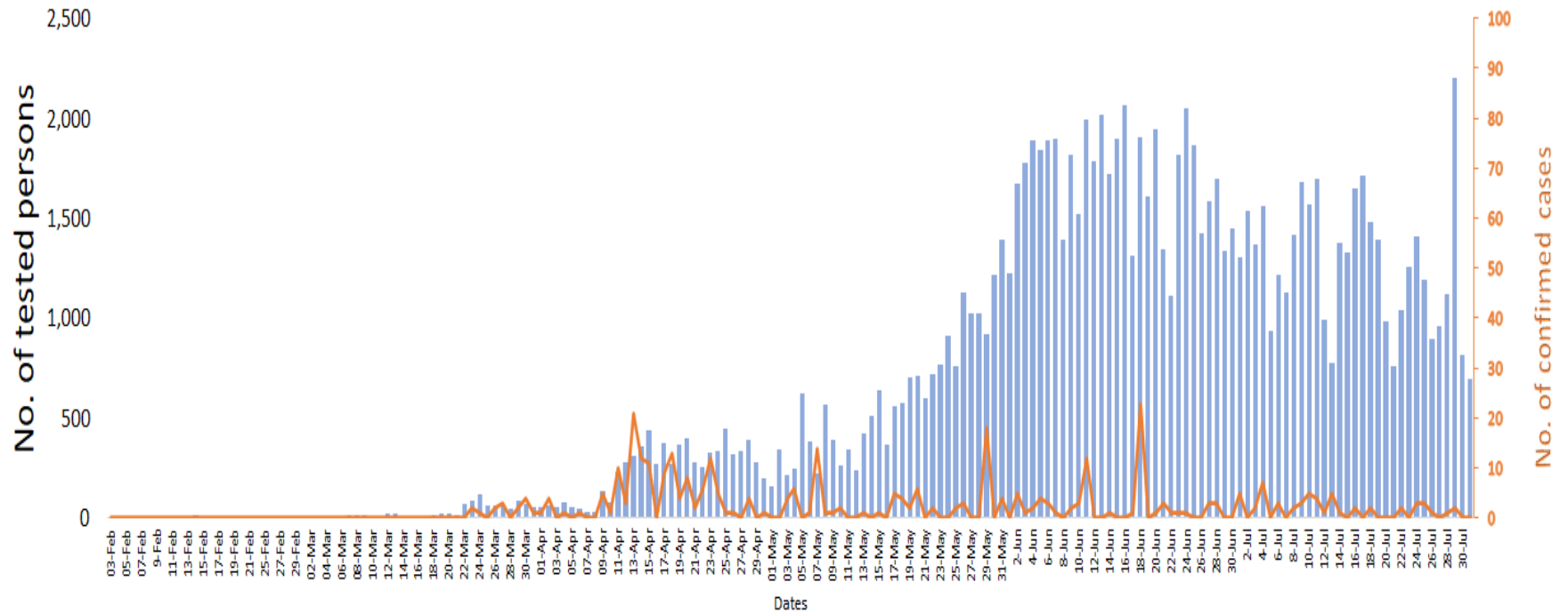
#### Person under Investigation (PUI) by State/Region hospitals (31.1.2020 – 31.7.2020) n= 6,802

No.	State/Region	PUI
1	Yangon	3409
2	Mandalay	1400
3	Kayin	300
4	Mon	280
5	Shan (N)	237
6	Magway	214
7	Bago	180
8	Shan (E)	125
9	Shan (S)	104
10	Ayeyarwaddy	102
11	Sagaing	90
12	Kayah	81
13	Thanintharyi	75
14	Rakhine	69
15	Naypyitaw	64
16	Kachin	42
17	Chin	30
<b>Total</b>		<b>6,802</b>

#### No. of Facility Quarantine sites and Quarantined people on 31.7.2020

No.	State/Region	No. of facilities	Total no. of quarantine
1	Yangon	55	3,252
2	Mon	258	2,532
3	Bago	239	2,422
4	Kayin	381	2,351
5	Tanintharyi	189	1,680
6	Magway	418	1,538
7	Sagaing	170	994
8	Mandalay	66	903
9	Rakhine	253	779
10	Kachin	426	619
11	Ayeyarwaddy	167	615
12	Shan South	79	535
13	Naypyitaw	1	274
14	Shan North	269	243
15	Kayah	18	89
16	Chin	16	66
17	Shan East	9	6
<b>Total</b>		<b>3,014</b>	<b>18,898</b>

## COVID-19 confirmed cases among tested by date (as of 31.7.2020)



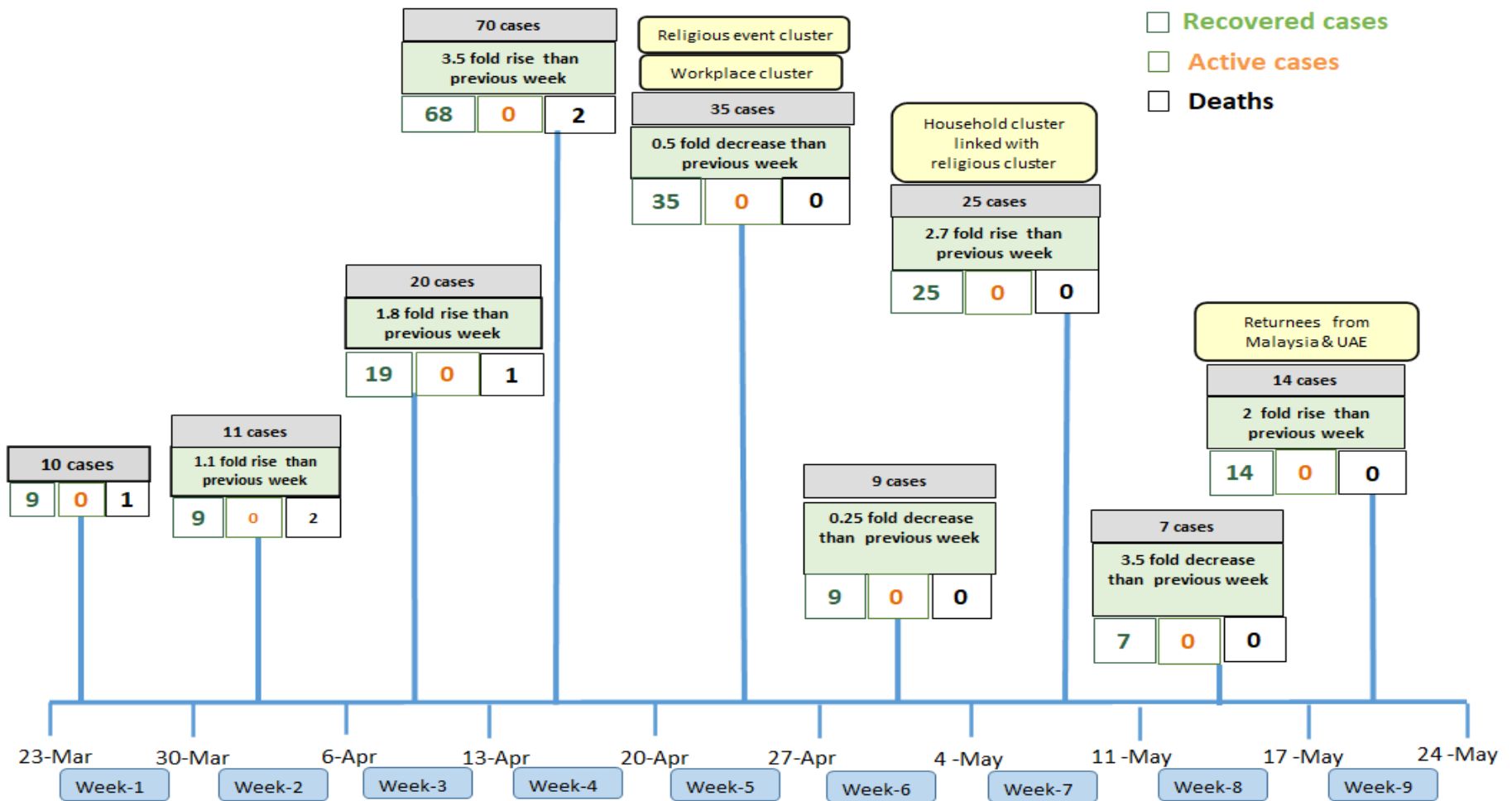
Total tested persons - 117,219

Total confirmed cases - 353

■ Tested person    — Confirmed case

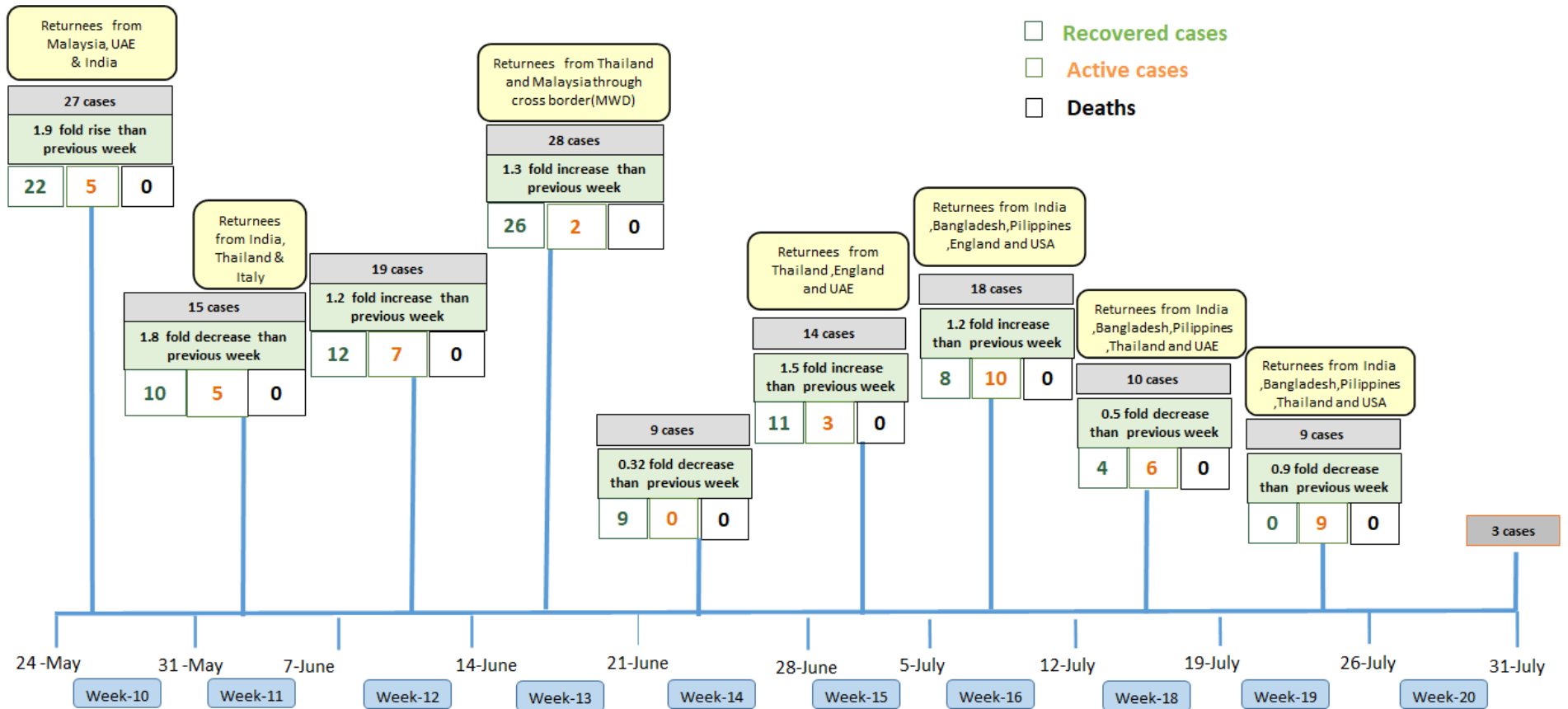


## Summary of new confirmed cases detection after first two cases (as of 31.7.2020)



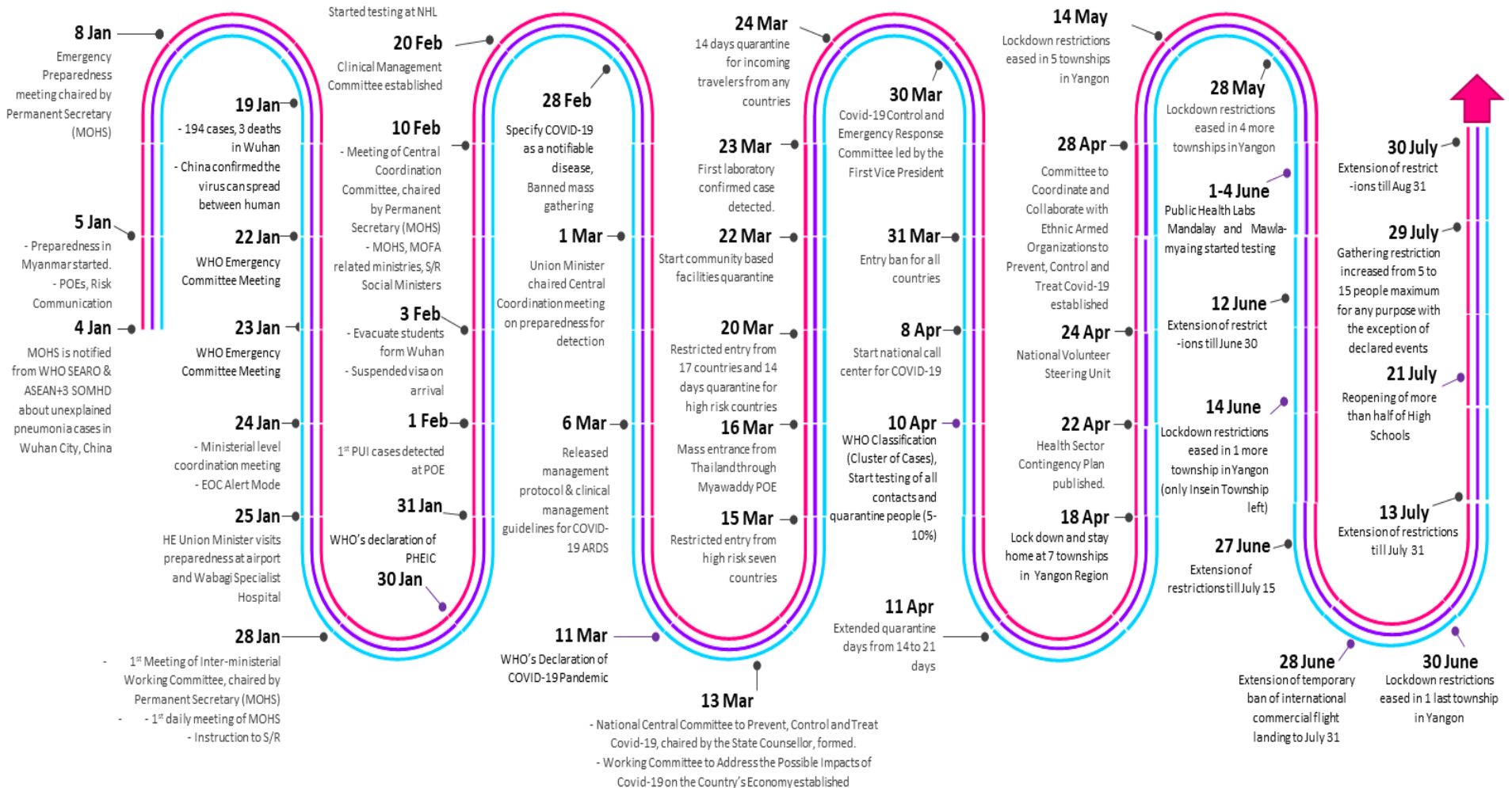
- Confirmed cases were detected as a peak in the 4th week after first confirmed cases due to the religious event cluster.
- Confirmed cases were decreased but still raised than the first 3 weeks due to the religious event cluster and workplace cluster.
- There were an increased in numbers of cases in the 7th week after the first two cases due to the household cluster linked with a religious cluster.
- Confirmed cases were detected by a nearly two-fold rise in the 9th and 10th weeks after the first two cases because of returnees coming back by relief flights.

# Summary of new confirmed cases detection after first two cases (as of 31.7.2020)



- Confirmed cases were detected as a peak in the 4th week after first confirmed cases due to the religious event cluster.
- Confirmed cases were decreased but still raised than the first 3 weeks due to the religious event cluster and workplace cluster.
- There were an increased in numbers of cases in the 7th week after the first two cases due to the household cluster linked with a religious cluster.
- Confirmed cases were detected by a nearly two-fold rise in the 9th and 10th weeks after the first two cases because of returnees coming back by relief flights.

# Timeline of Preparedness and Response to COVID-19 in Myanmar (as of 31.7.2020)



Hotline Number — 0673 420 268

Data source - CEU, DMS, NHL, PHL (MDY and MLM), DMR, DSGH, State and Region Health Departments