



Ministry of Health and Sports (Myanmar)

Department of Public Health

Central Epidemiology Unit

(9 August 2020)

Coronavirus Disease 2019 (COVID-19)

Situation Report - 124

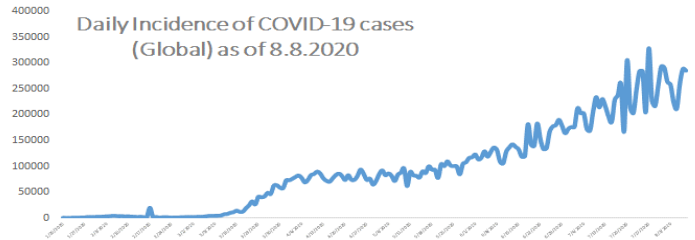
Data as reported by States and Regions by 8:30 PM MST 8 August 2020

Global Situation (WHO situation report - 201) data as of 14:30 MST 8 August 2020

Confirmed cases
19,187,943

Deaths
716,075

Case Fatality Rate
3.7 %



Myanmar Situation

Total Tested

125,827

Confirmed Cases

359

Negative

125,468

Recovered

312

86.9% of Confirmed cases

Active

41

11.4% of Confirmed cases

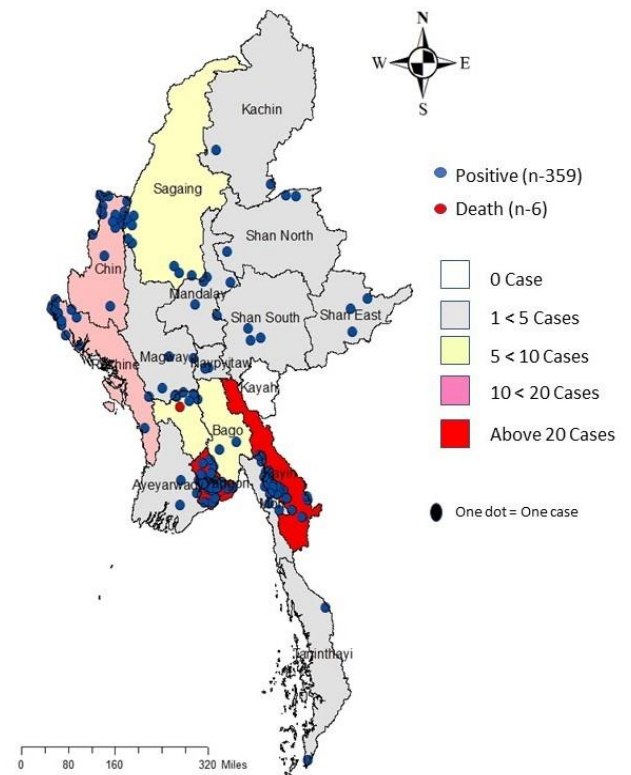
Death

6

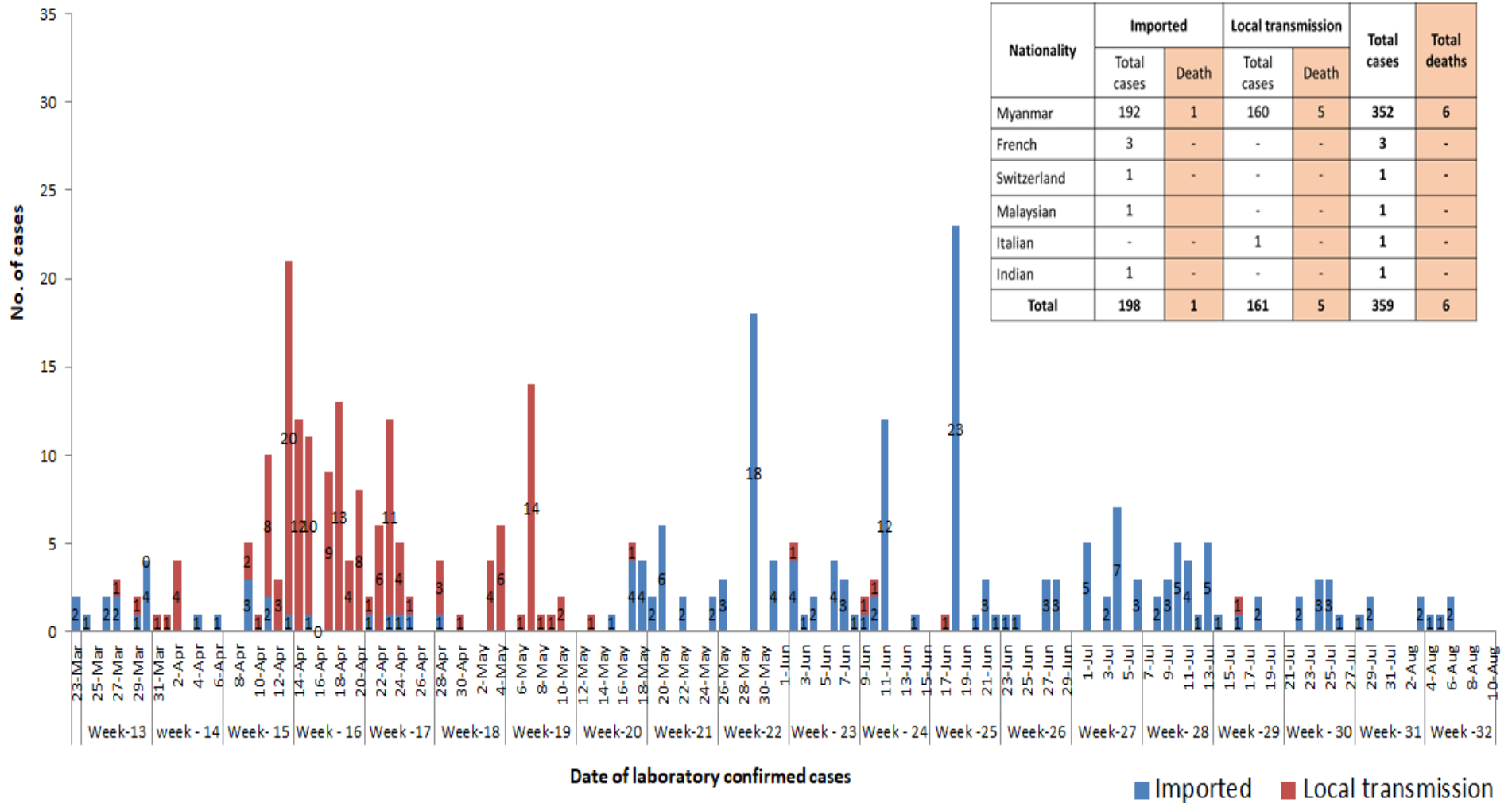
1.6% of Confirmed cases

No	State/Region	COVID –19 Confirmed case	Recovered	Deaths
1	Yangon	252	216(1 New)	5
2	Kayah	29	26	-
3	Chin	17	11	-
4	Rakhine	16	16	-
5	Sagaing	9	9	-
6	Bago	9	8	1
7	Shan (South)	4	4	-
8	Mandalay	4	4	-
9	Shan (East)	3	3	-
10	Shan (North)	3	3	-
11	Magway	3	3	-
12	Naypyitaw	2	2	-
13	Ayeyarwaddy	2	2	-
14	Kachin	2	2	-
15	Mon	2	2	-
16	Thanintharyi	2	1	-
17	Kayah	-	-	-
Total		359	312(1 New)	6

Map showing COVID-19 laboratory confirmed cases

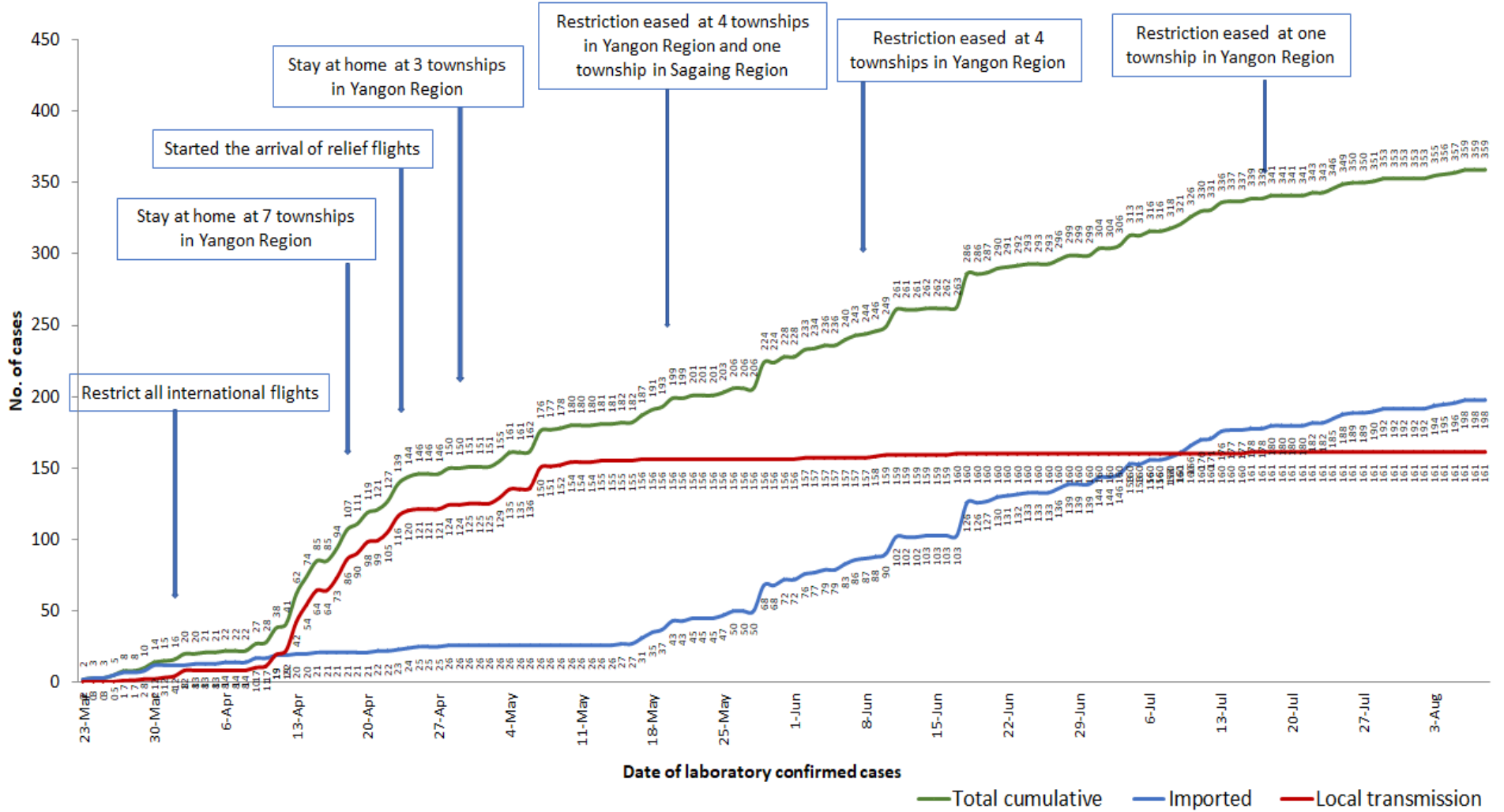


COVID-19 confirmed cases by types of transmissions (as of 8.8.2020, 8:30 pm) n=359

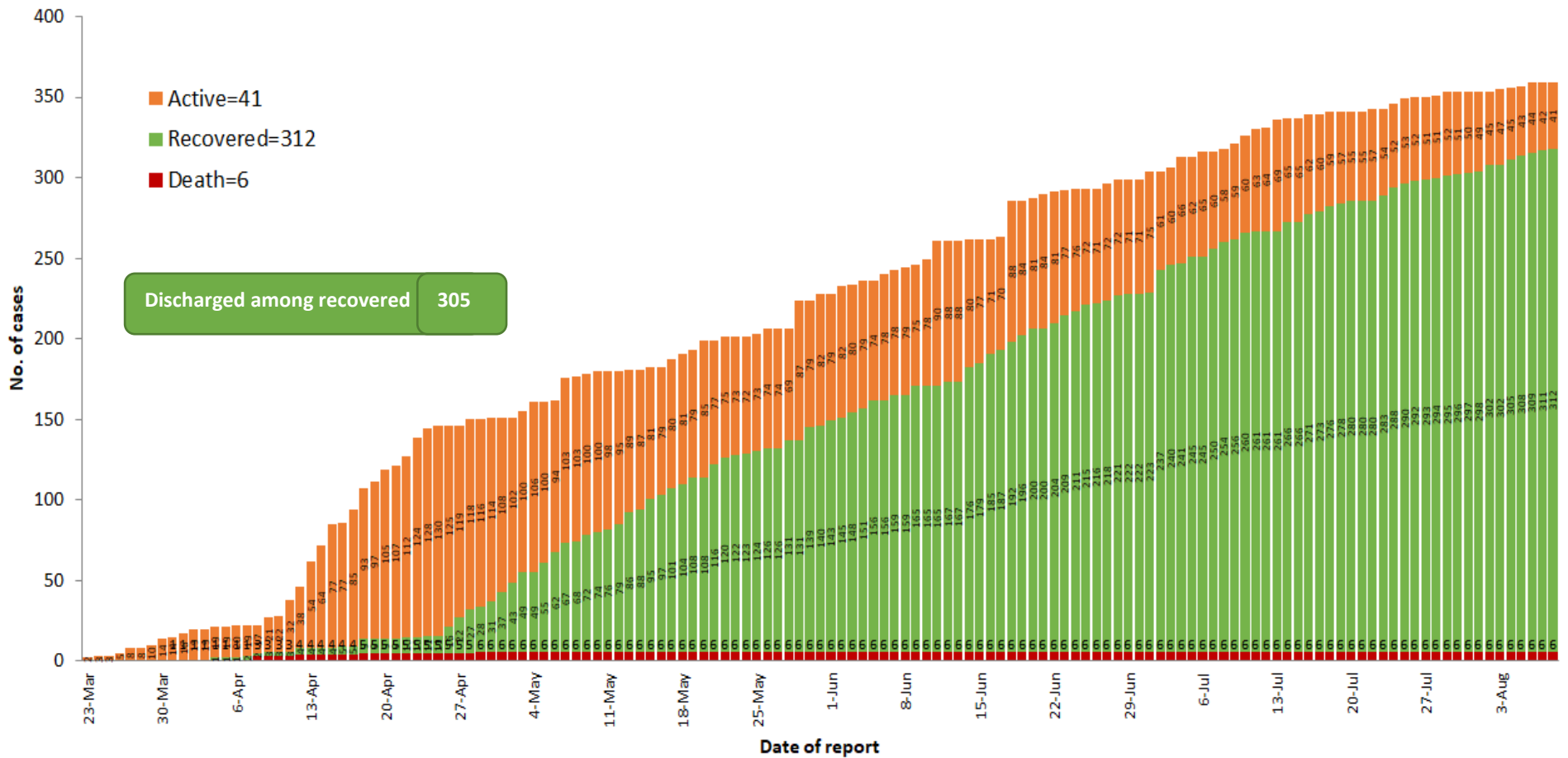


Nationality	Imported		Local transmission		Total cases	Total deaths
	Total cases	Death	Total cases	Death		
Myanmar	192	1	160	5	352	6
French	3	-	-	-	3	-
Switzerland	1	-	-	-	1	-
Malaysian	1	-	-	-	1	-
Italian	-	-	1	-	1	-
Indian	1	-	-	-	1	-
Total	198	1	161	5	359	6

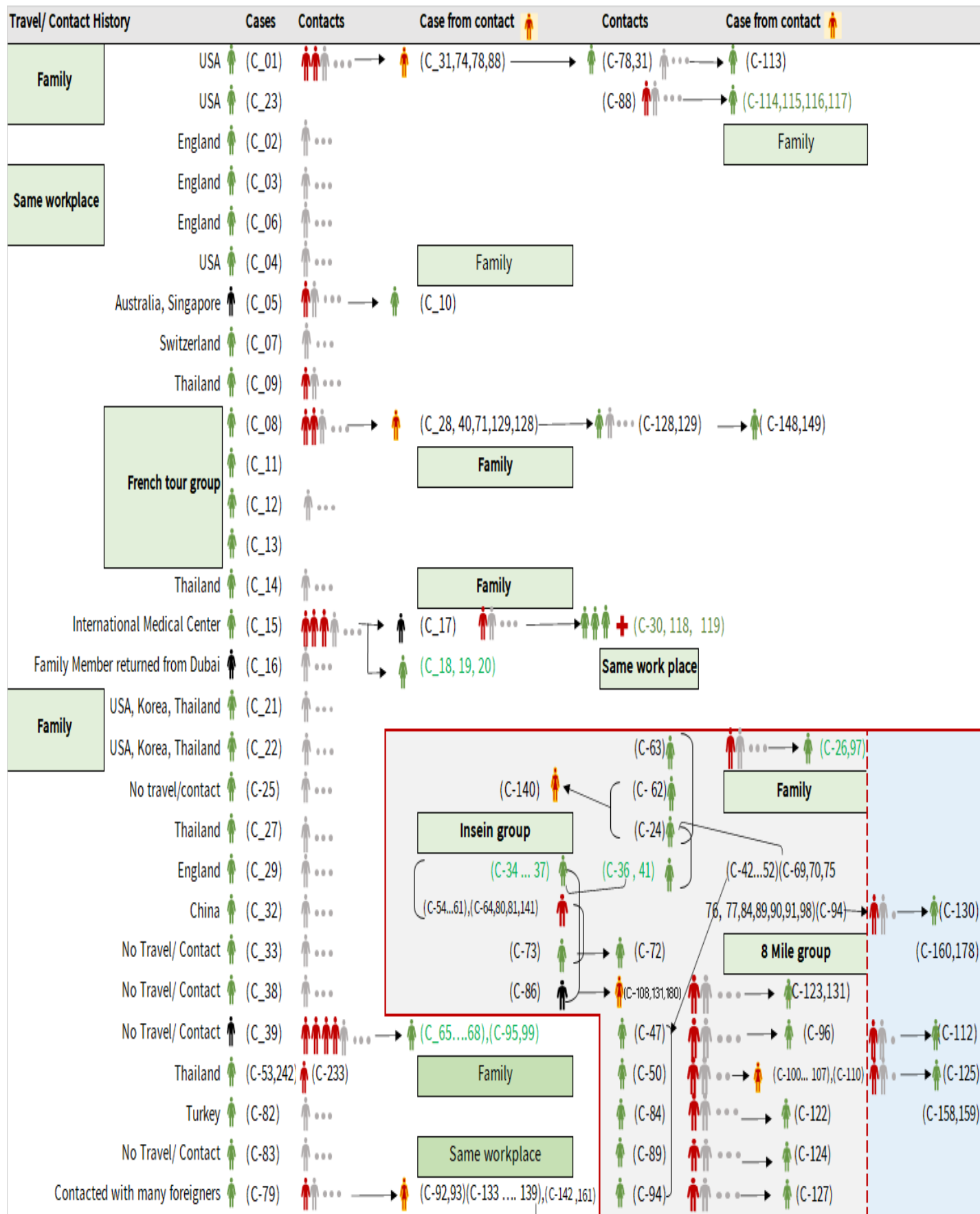
Total laboratory confirmed cases by date (as of 8.8.2020, 8:30 pm), n= 359



Cumulative Number of active confirmed cases, recovered and deaths (23.3.2020 – 8.8.2020), n (cumulative)=359



Summary of COVID-19 confirmed cases (as of 8.8.2020), n (contacts)= 5,789



Summary of COVID-19 confirmed cases (as of 8.8.2020), n (contacts)= 5,789

Travel/ Contact History	Cases	Contacts	Case from contact	Contacts	Case from contact
No Travel/ Contact	(C-85)	...			(C-110)
No travel / Contact	(C-87)	... → (C-126)			(C-28,40,42,43,44,45,46,48,49,51,52)
No travel / Contact	(C-109)	...	(C-139) ... → (C-146)		(C-54,55,56,57,58,60,61,63,64,69,70)
No travel / Contact	(C-111)	...	(C-133,134,142) ... → (C-147)		(C-71,74,75,76,77,80,81,88,90,91,92,93)
No travel/Contact	(C- 120)	...			(C-98,100,101,102,103,104,105,106,107,108)
England	(C-327,121,302,303,317)				(C- 133,134,135,136,137,138,139,140,141,142)
No travel/Contact	(C-132)	...			(C-151,152,153,154,157,158,159,160,161)
Dubai/Thailand	(C-143)	...			(C-164,165,167,168,170,171,172,174)
No travel/Contact	(C-144)	...			(C-178,184,189,191,193,205,207,216,217,218)
India	(C- 145,204,208,209,210,211,212,213,215,220,221,223,224,229,225,227,228,252,255,259,296,299,3				(C-226,233,234,235,237,246,253,258,306,318)
China	(C-150,230)			<div style="border: 1px solid black; padding: 2px; display: inline-block;">Household</div>	
Contact with religious event cluster	(C- 162)	... → (C-151,152,153,154,157) → (C-165 177) (C-166,169,173,175,176,177)			
No travel/contact	(C-155)	... → (C-163,164) (163)		(C-177) ... → (C-179) ... → (C-181)	
No travel/contact	(C-156)	...			
No travel/contact	(C- 183)	...			
Malaysia	(C-184,189,273,280,351,353)	(C-182,185,186,191,188,190,187,200,201,232,275,282)			
UAE	(C-301,315,316,337)	(C-193,192,194,195,196,197,198,199,300,301,314,340)			
Italy	(C-243,202)				
No travel/Contact	(C- 231)				
Bangladesh	(C-234,244,247,250,262,309,310,334)	(C-244,245,247,248,250,262,291,292,293,308,325,326,348)			
No travel/contact	(C-245)	...			
No travel/contact	(C-249)				
No travel/contact	(C-263)	...			
Thailand	(C-332,333,335,346,349,352)	(C-264,265,266,267,268,269,270,271,272,273,274,276,277,278,279,280,281,283,284,285,286,287,294,304,312,336,338)			
Quata	(C-288,354,355)	(C-289,290)			
India	(C-205.....214,216...219,222.... 229,....241,246,253....258,260,261,295,297,298,307,322,323,324,344,345,357,358,359)	(C-203,240,251,254,328,329,3			
Lao	(C-311)	...			
Singapore	(C-313)	...			
Philippines	(C-319,321)	(C-320,342,343)			
USA	(C-347)	(C-331,350)			
No travel/contact	(C-339)	...			
Sudan	(C-356)				

Summary of current situation

Type	New (7.8.2020-8.8.2020)	Total (on 8.8.2020)
Suspected and Person Under Investigation (PUI)	16	134
Hospital Quarantine	4	34
Facility Quarantine	1,448	19,296

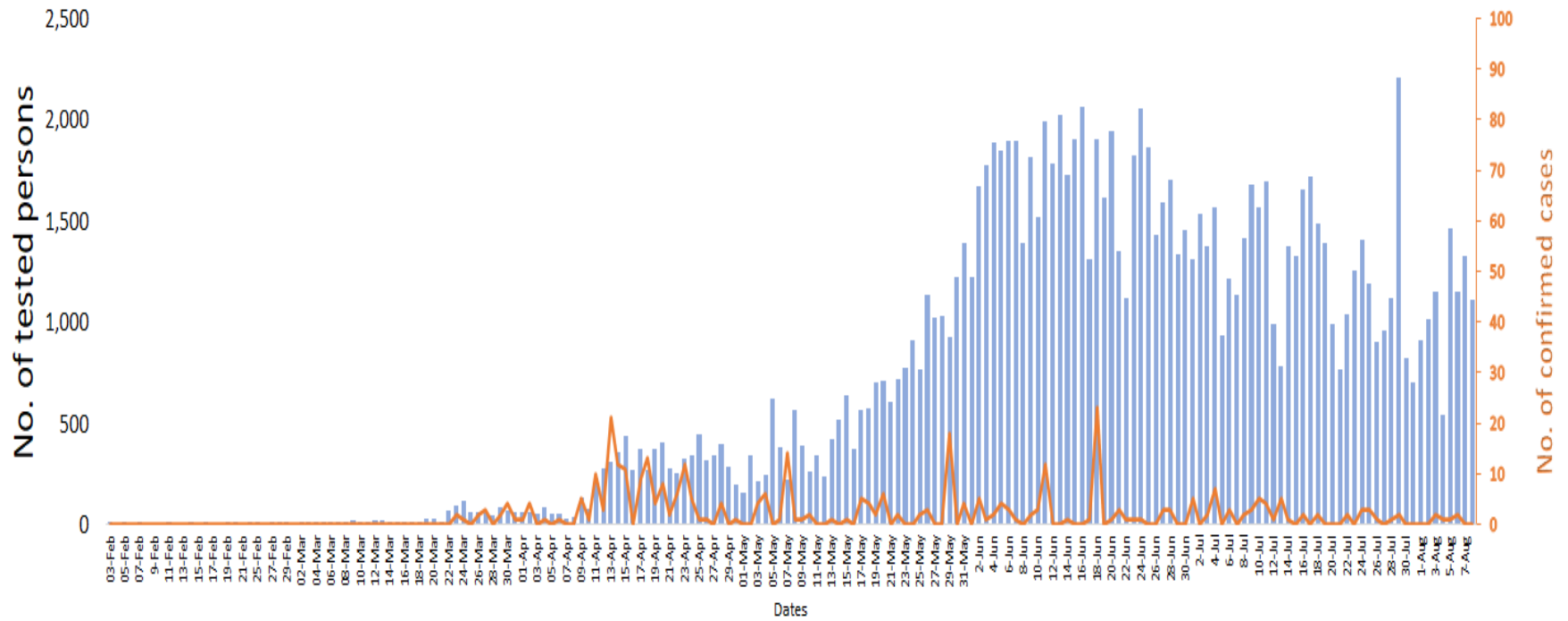
Person under Investigation (PUI) by State/Region hospitals (31.1.2020 – 8.8.2020) n= 6,946

No.	State/Region	PUI
1	Yangon	3464
2	Mandalay	1446
3	Kayin	315
4	Mon	285
5	Shan (N)	248
6	Magway	222
7	Bago	181
8	Shan (E)	127
9	Shan (S)	104
10	Ayeyarwaddy	102
11	Sagaing	90
12	Kayah	81
13	Thanintharyi	75
14	Rakhine	69
15	Naypyitaw	64
16	Kachin	43
17	Chin	30
Total		6,946

No. of Facility Quarantine sites and Quarantined people on 8.8.2020

No.	State/Region	No. of facilities	Total no. of quarantine
1	Yangon	60	3974
2	Mon	263	2596
3	Kayin	367	2524
4	Bago	187	2425
5	Tanintharyi	189	1625
6	Magway	407	1216
7	Mandalay	59	950
8	Sagaing	168	898
9	Rakhine	245	685
10	Shan South	79	612
11	Ayeyarwaddy	149	605
12	Kachin	111	487
13	Naypyitaw	2	299
14	Shan North	269	151
15	Shan East	7	104
16	Kayah	18	93
17	Chin	18	52
Total		2,598	19,296

COVID-19 confirmed cases among tested by date (as of 8.8.2020)

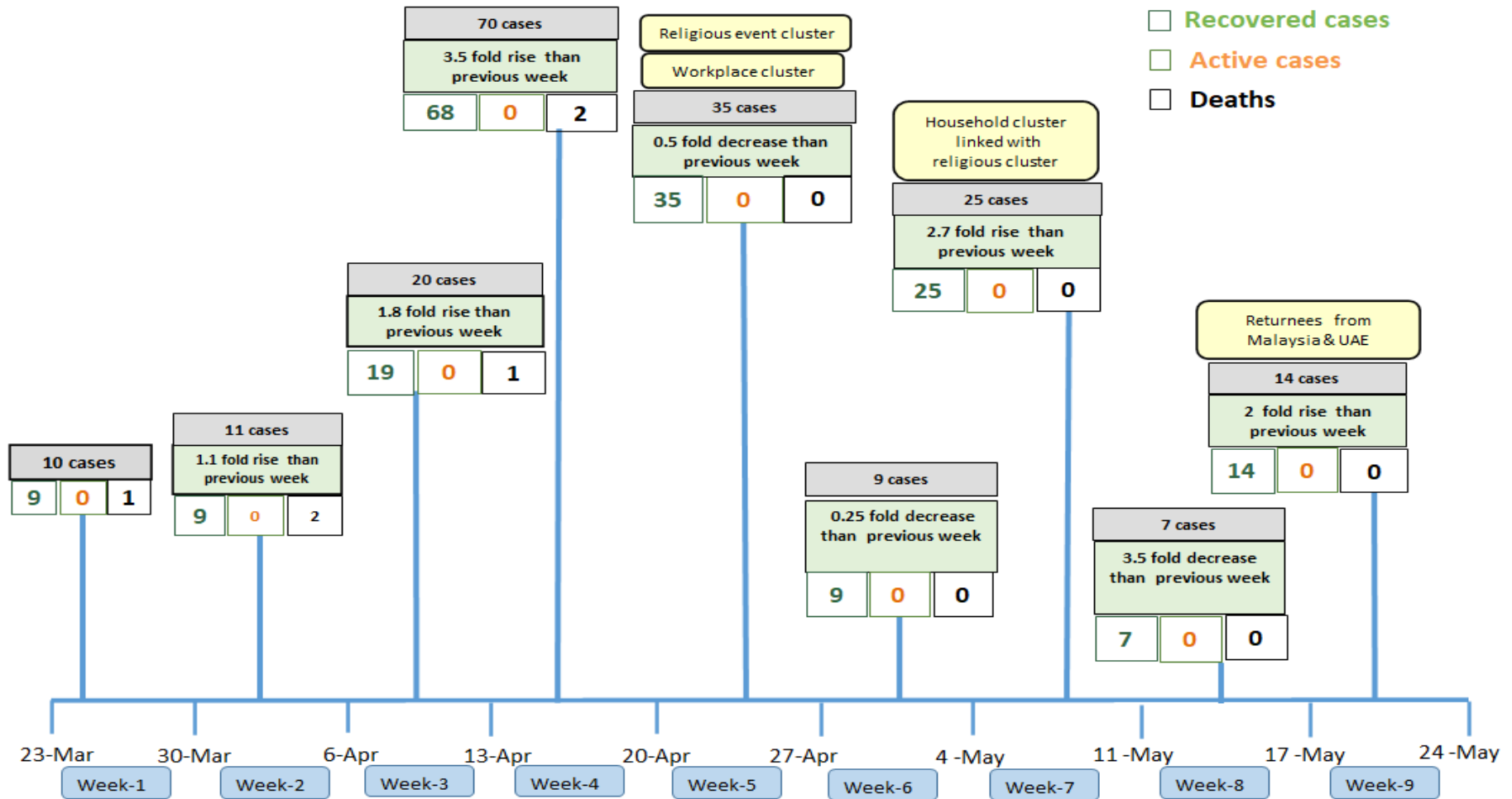


Total tested persons - 125,827

Total confirmed cases - 359

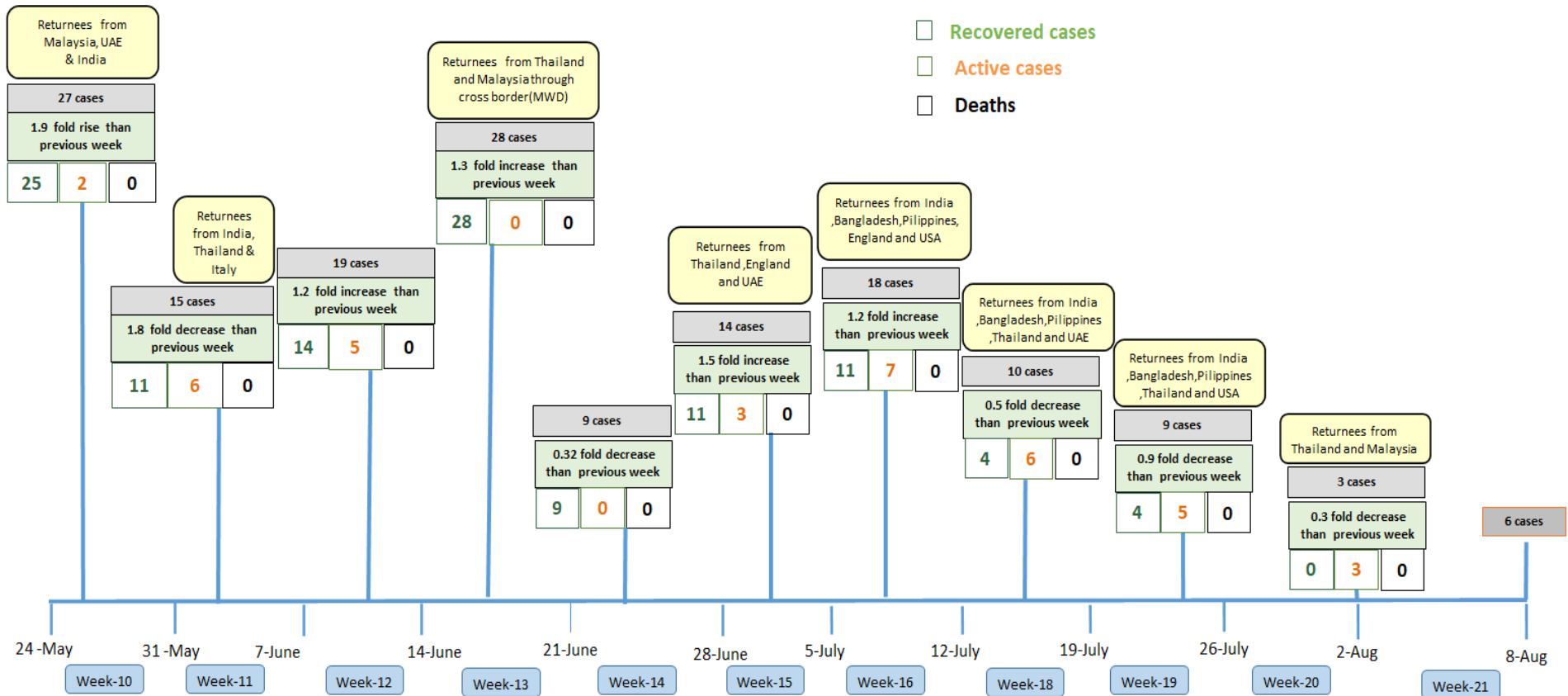
■ Tested person — Confirmed case

Summary of new confirmed cases detection after first two cases (as of 8.8.2020)



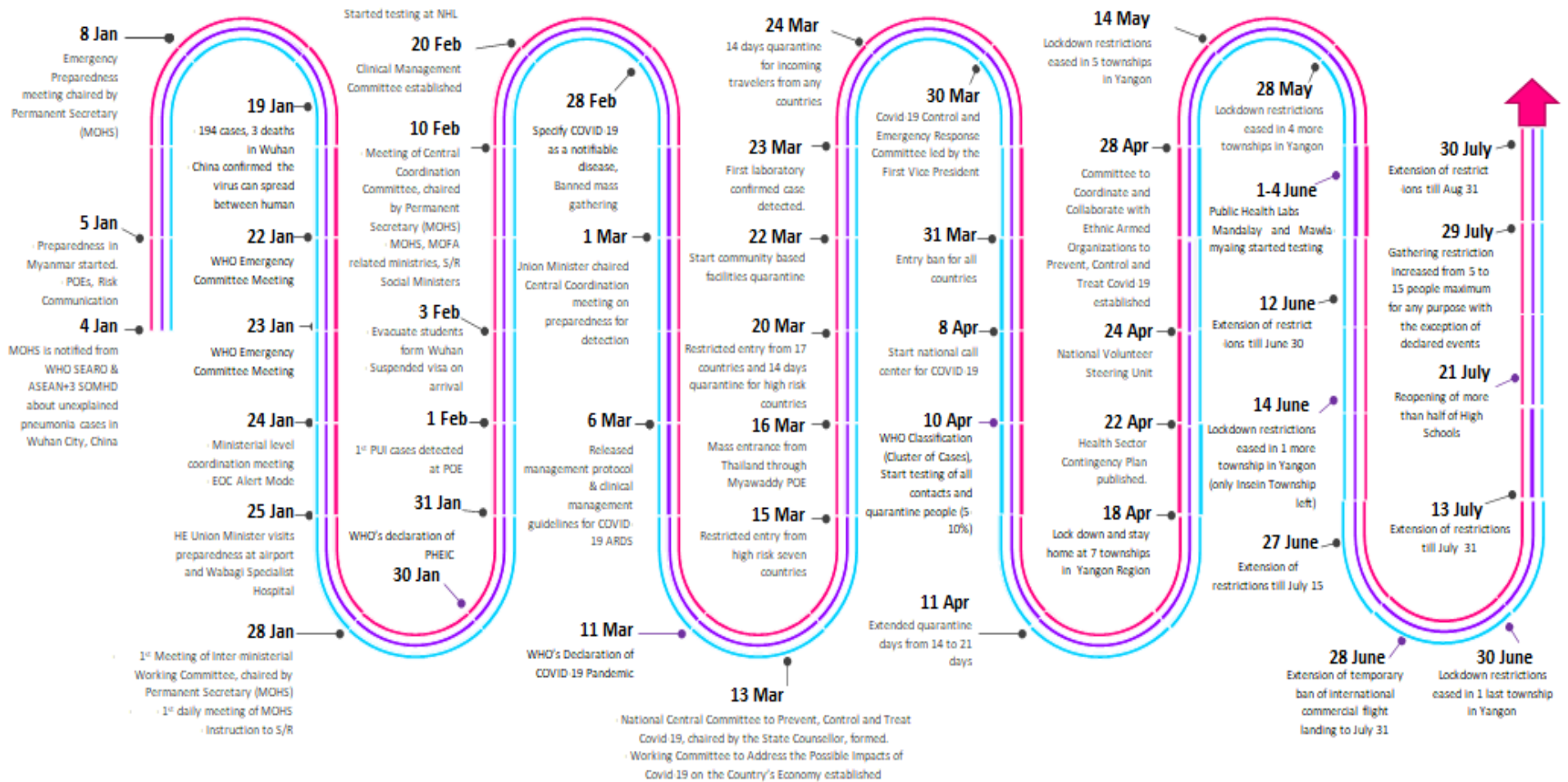
- Confirmed cases were detected as a peak in the 4th week after first confirmed cases due to the religious event cluster.
- Confirmed cases were decreased but still raised than the first 3 weeks due to the religious event cluster and workplace cluster.
- There were an increased in numbers of cases in the 7th week after the first two cases due to the household cluster linked with a religious cluster.
- Confirmed cases were detected by a nearly two-fold rise in the 9th and 10th weeks after the first two cases because of returnees coming back by relief flights.

Summary of new confirmed cases detection after first two cases (as of 8.8.2020)



- Confirmed cases were detected as a peak in the 4th week after first confirmed cases due to the religious event cluster.
- Confirmed cases were decreased but still raised than the first 3 weeks due to the religious event cluster and workplace cluster.
- There were an increased in numbers of cases in the 7th week after the first two cases due to the household cluster linked with a religious cluster.
- Confirmed cases were detected by a nearly two-fold rise in the 9th and 10th weeks after the first two cases because of returnees coming back by relief flights.

Timeline of Preparedness and Response to COVID-19 in Myanmar (as of 8.8.2020)



Hotline Number — 0673 420 268

Data source - CEU, DMS, NHL, PHL (MDY and MLM), DMR, DSGH, State and Region Health Departments