



Ministry of Health and Sports (Myanmar)

Department of Public Health

Central Epidemiology Unit

(12 June 2020)

Coronavirus Disease 2019 (COVID-19)

Situation Report - 66

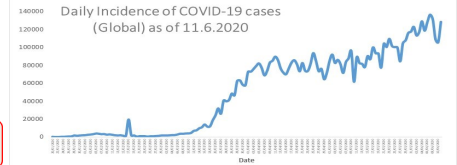
Data as reported by States and Regions by 1:00AM MST 12 June 2020

Global Situation
(WHO situation report - 143)
data as of 14:30 MST 11 June 2020

Confirmed cases
7,273,958

Deaths
413,372

Case Fatality Rate
5.6 %



Myanmar Situation

Total tested
45,926

Confirmed cases
261

Negative
45,665

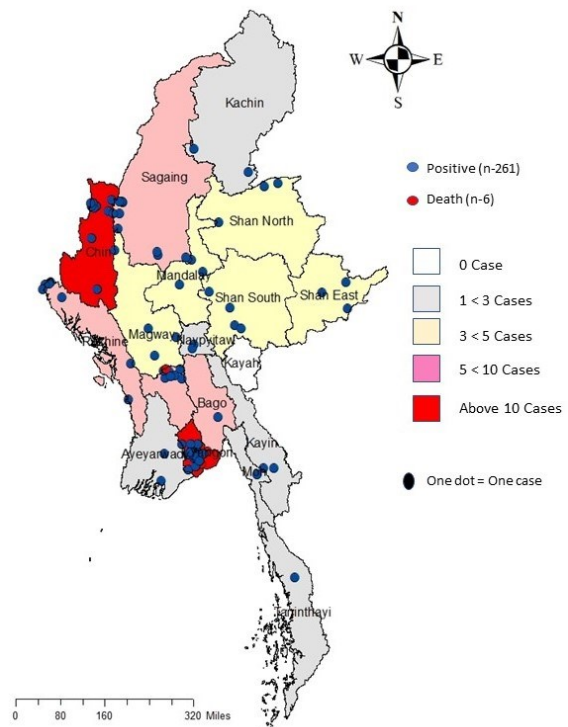
Recovered
165
63.2% of confirmed cases

Active
90
34.4% of confirmed cases

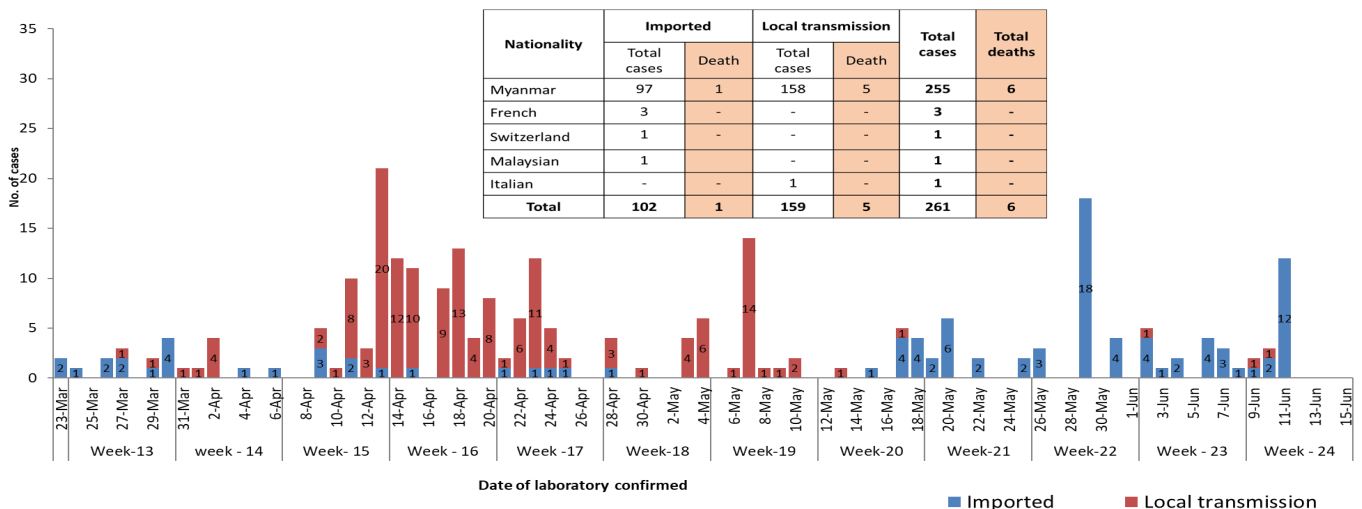
Death
6
2.2% of confirmed cases

No.	State/Region	COVID-19 Confirmed case	Recovered	Deaths
1.	Yangon	201 (11 New)	128	5
2.	Chin	10	5	-
3.	Sagaing	9	7	-
4.	Bago	8	6	1
5.	Rakhine	7 (1 New)	-	-
6.	Shan(South)	4	2	-
7.	Mandalay	3	3	-
8.	Shan(East)	3	3	-
9.	Shan(North)	3	2	-
10.	Magway	3	2	-
11.	Naypyitaw	2	2	-
12.	Kayin	2	1	-
13.	Ayeyarwaddy	2	1	-
14.	Kachin	2	1	-
15.	Mon	1	1	-
16.	Thanintharyi	1	1	-
17.	Kayah	-	-	-
Total		261 (12 new)	165	6

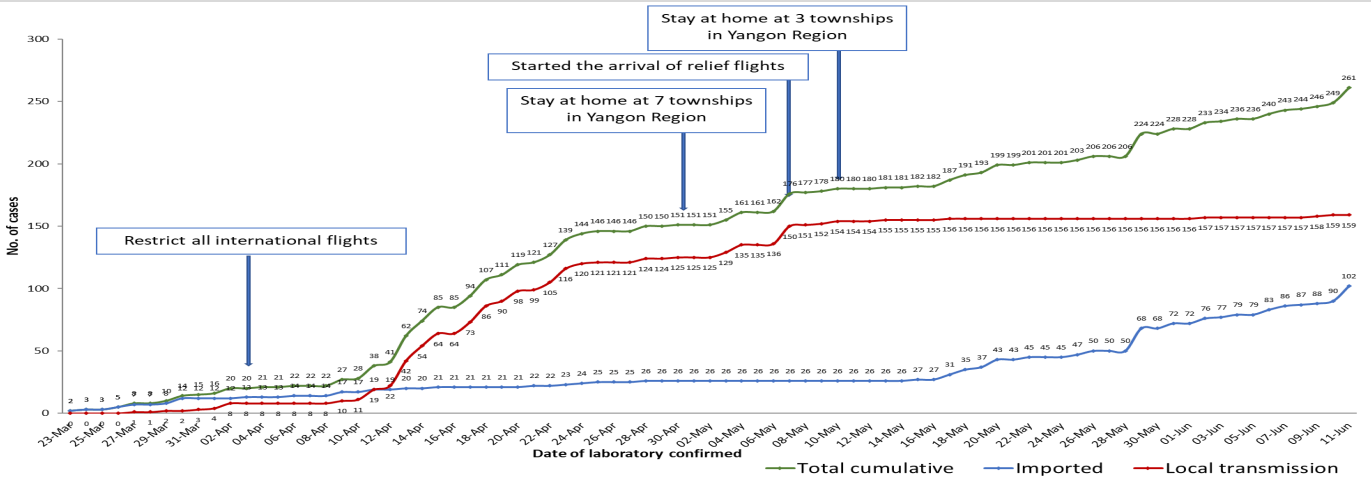
Map showing COVID-19 laboratory confirmed cases



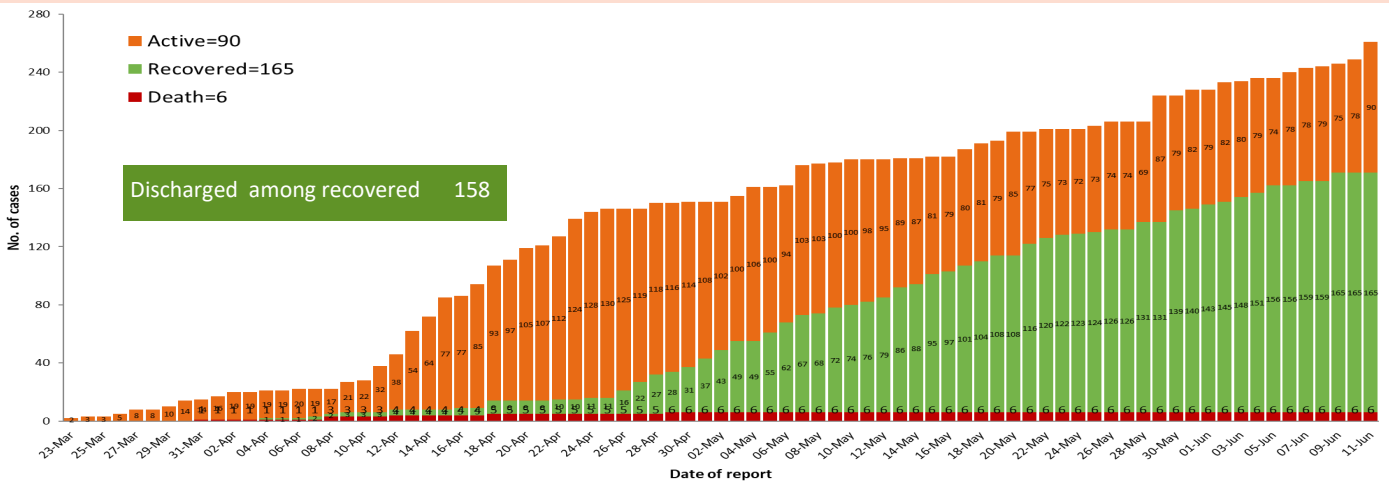
COVID-19 confirmed cases by types of transmissions (as of 12-6-2020,1:00 am) n=261



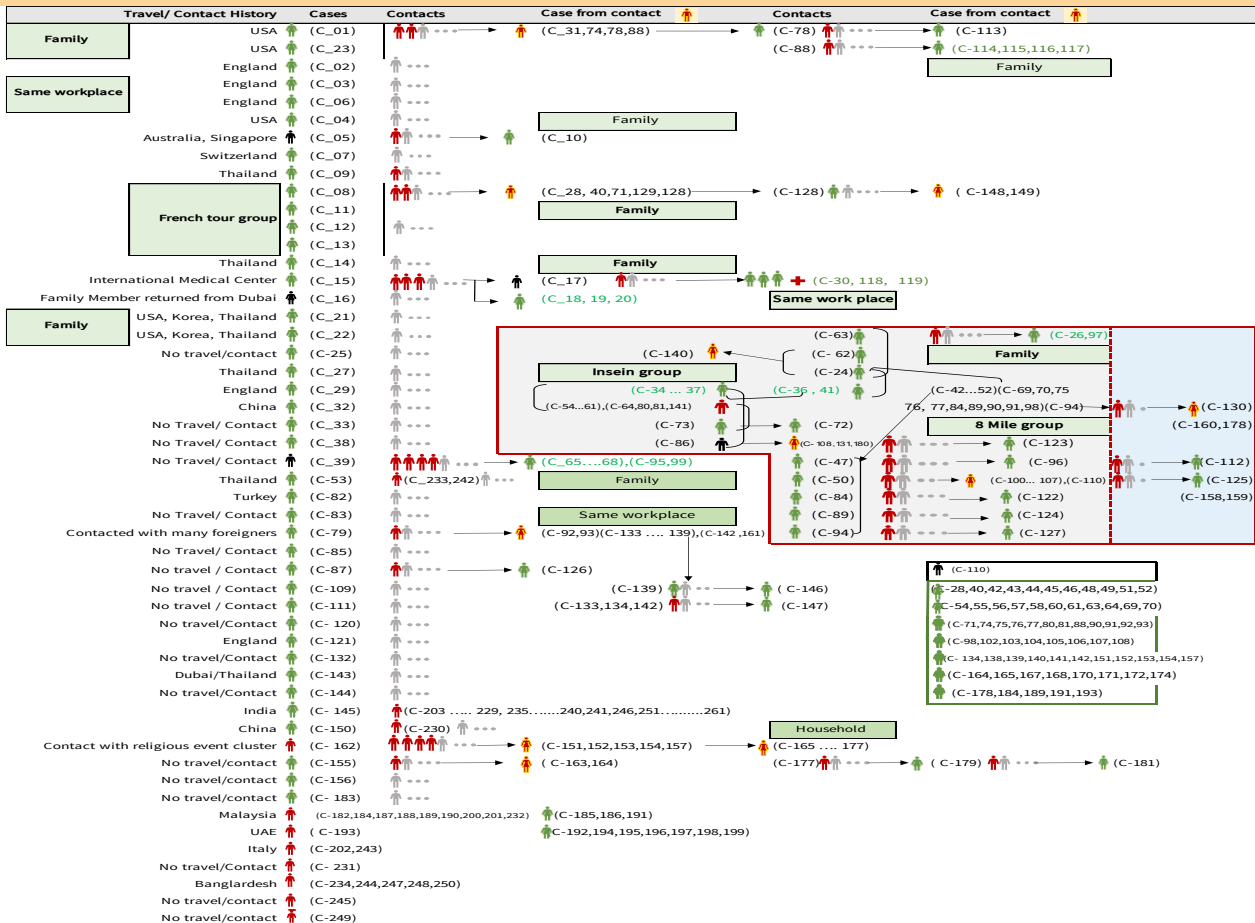
Total laboratory confirmed cases by date (as of 12.6.2020, 1:00 am, n= 261)



Cumulative Number of active confirmed cases, recovered and deaths (23.3.2020 – 11-6-2020), n (cumulative)=261



Summary of COVID-19 confirmed cases (as of 11-6-2020) ,n (contacts)= 5,181



Summary of current situation

Type	New (10.6.2020-11.6.2020)	Total (on 11.6.2020)
Suspected and Person Under Investigation (PUI)	28	234
Hospital Quarantine	7	78
Facility Quarantine	2,129	46,432

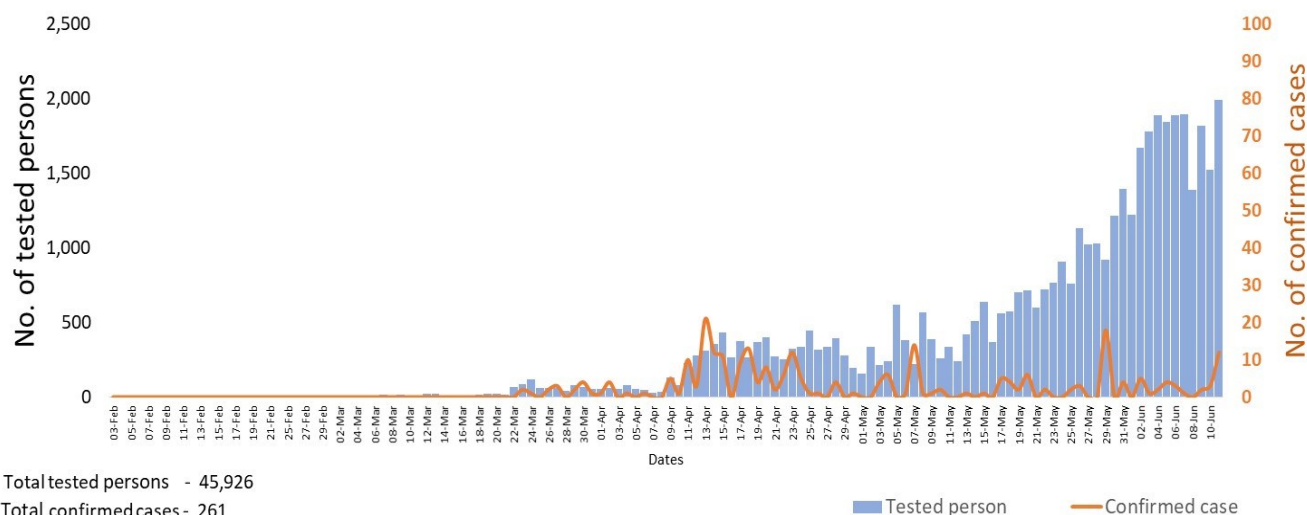
Person under Investigation (PUI) by State/Region hospitals (10.6.2020 – 11.6.2020) n= 5,403

No.	State/Region	PUI
1.	Yangon	2,795
2.	Mandalay	990
3.	Mon	198
4.	Shan(N)	193
5.	Kayin	190
6.	Magway	181
7.	Bago	176
8.	Shan (E)	109
9.	Ayeyarwaddy	99
10.	Shan(S)	93
11.	Sagaing	80
12.	Kayah	76
13.	Naypyitaw	61
14.	Rakhine	59
15.	Thanintharyi	53
16.	Kachin	29
17.	Chin	21
Total		5,403

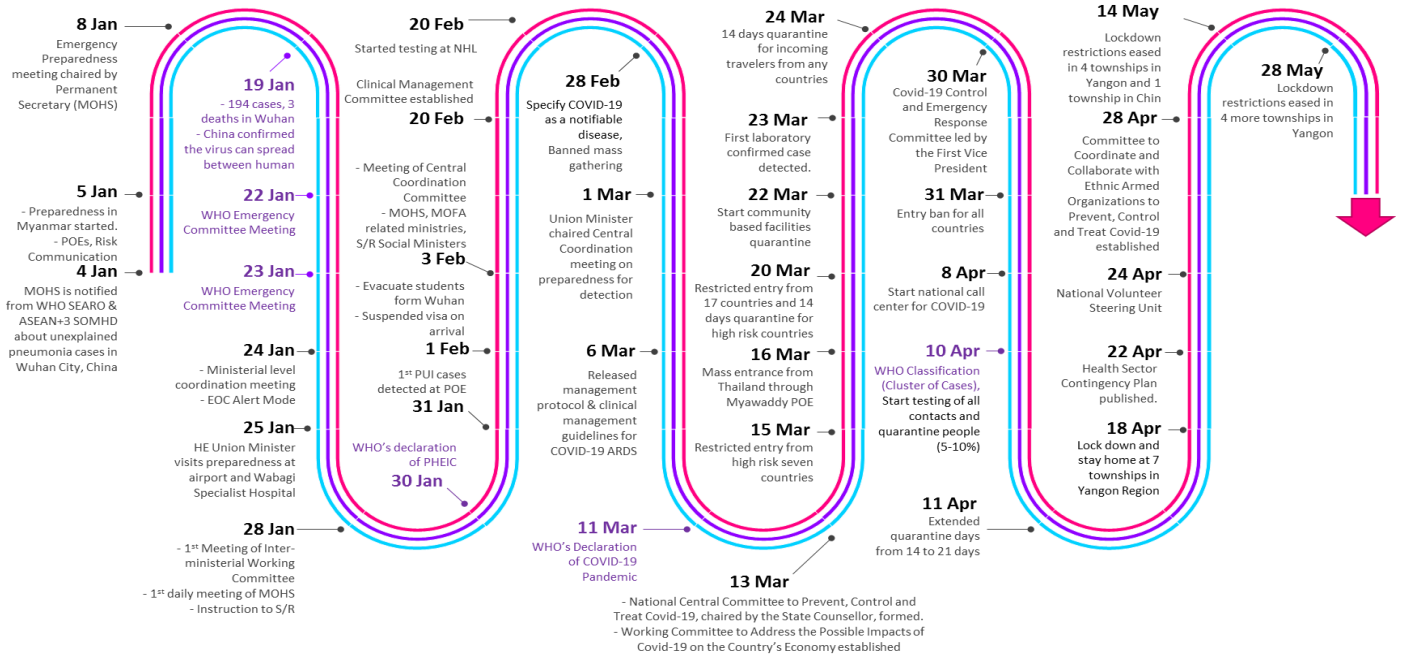
No. of Facility Quarantine sites and Quarantined people on 11.6.2020

No.	State/Region	No. of facilities	Total no. of quarantine
1.	Magway	2,859	8,412
2.	Bago	517	6,905
3.	Kayin	811	4,400
4.	Kachin	435	4,183
5.	Mon	239	3,291
6.	Sagaing	996	2,888
7.	Mandalay	288	2,791
8.	Rakhine	575	2,666
9.	Yangon	77	2,580
10.	Ayeyarwaddy	611	2,127
11.	Shan North	398	1,563
12.	Shan South	122	1,456
13.	Tanintharyi	189	1,320
14.	Naypyitaw	19	1,175
15.	Chin	33	262
16.	Shan East	11	208
17.	Kayah	18	205
Total		8,198	46,432

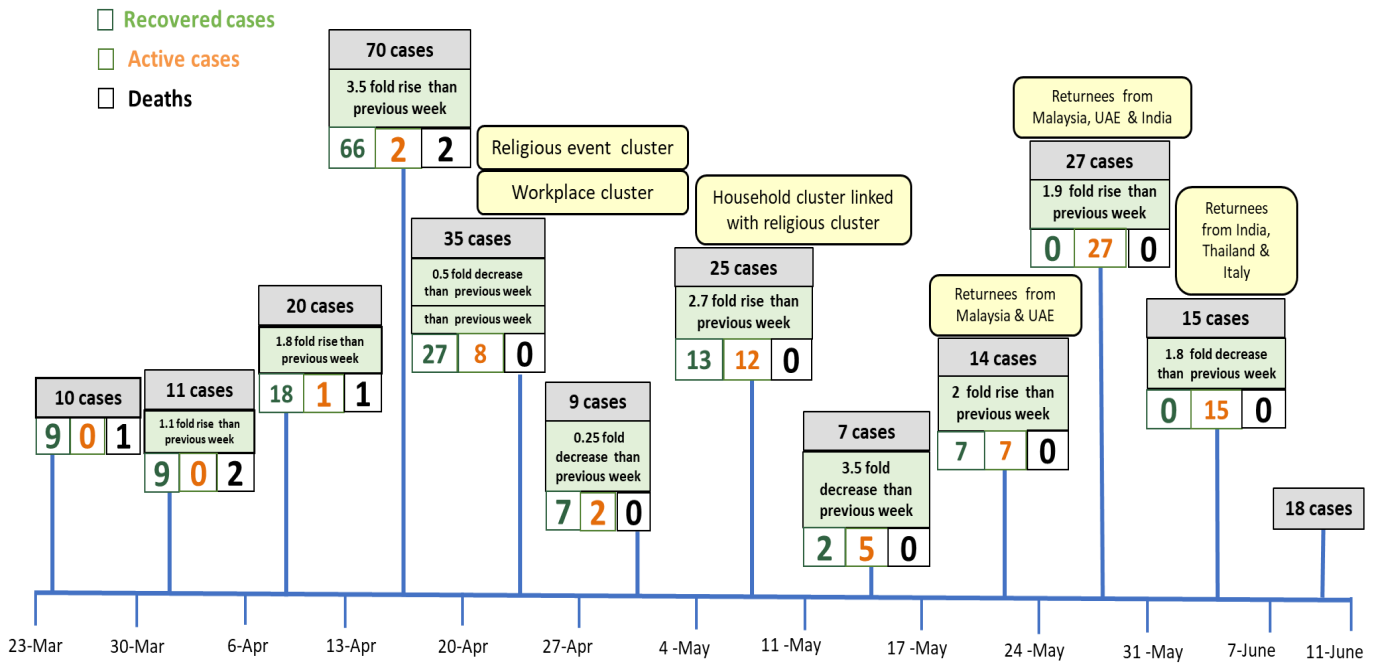
COVID-19 confirmed cases among tested by date (as of 11.6.2020)



Timeline of Preparedness and Response to COVID-19 in Myanmar (as of 11.6.2020)



Summary of new confirmed cases detection after first two cases (as of 11.6.2020)



- Confirmed cases were detected as peak in the 4th week after first confirmed cases due to religious event cluster.
- Confirmed cases were decreased but still raised than the first 3 weeks due to religious event cluster and workplace cluster.
- There were an increased in numbers of cases in the 7th week after the first two cases due to household cluster linked with religious cluster.
- Confirmed cases were detected by nearly two fold rise in the 9th and 10th weeks after first two cases because of returnees coming back by relief flights.