



# Ministry of Health and Sports (Myanmar)

## Department of Public Health

### Central Epidemiology Unit

( 17 May 2020)

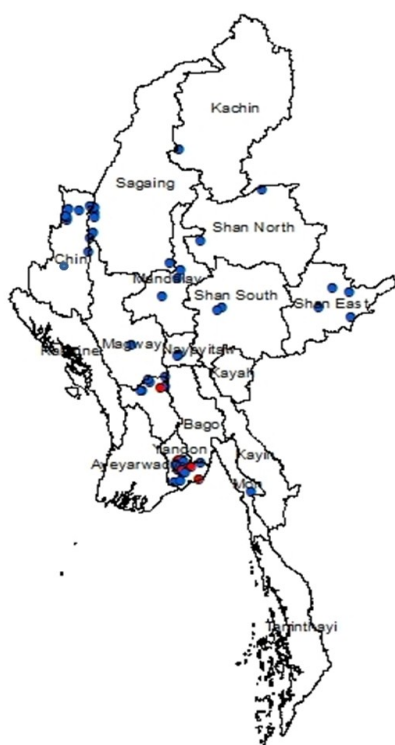
**Situation Report - 40** Data as reported by States and Regions by 10:00 PM MST 16 May 2020

**Global Situation**  
(according to WHO situation report - 117, data as of 14:30 MST 16 May 2020)

<b>Confirmed cases</b>	<b>Deaths</b>
<b>4,425,485</b>	<b>302,059</b>

## Myanmar

Map showing COVID-19 laboratory confirmed cases

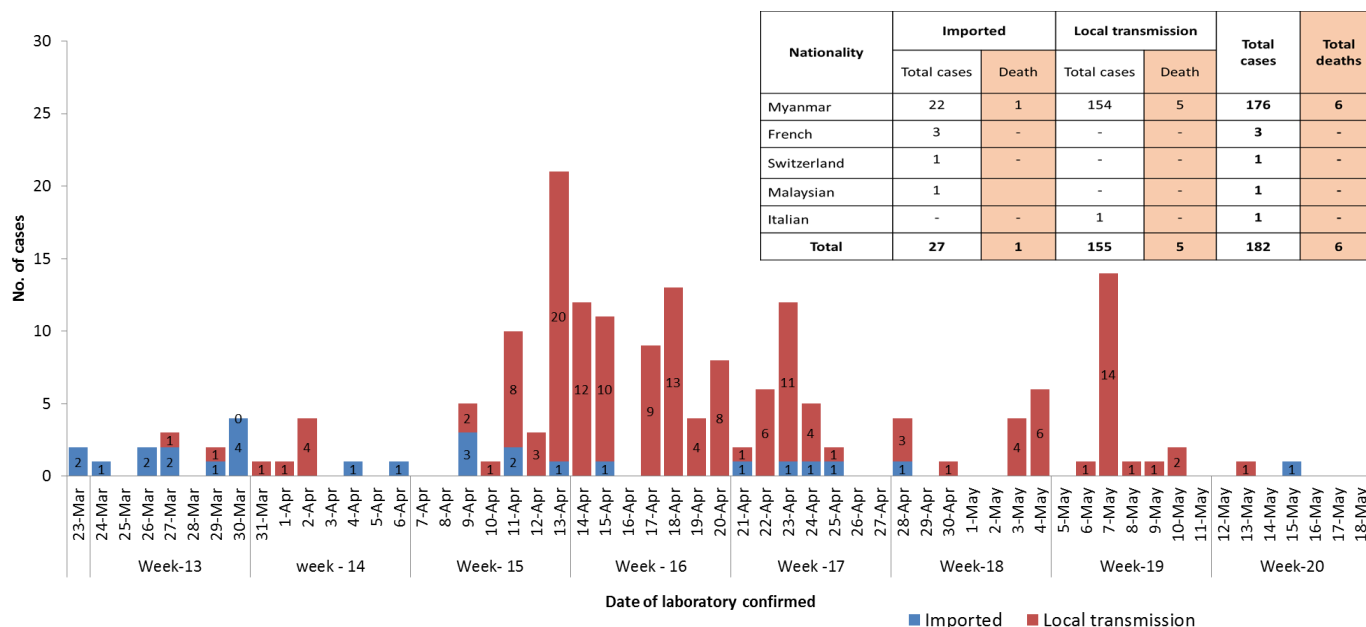


● Case  
● Death

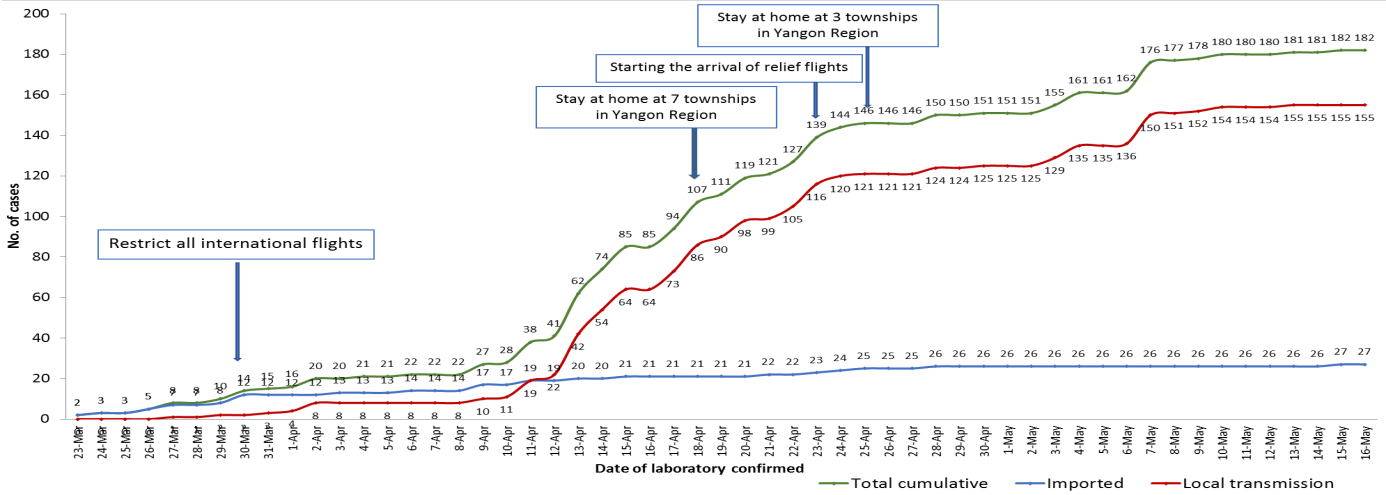
n (case) = 182  
n (death) = 6

Total tested Specimen for COVID-19 (as of 16-5-2020, 10:00 PM)				
<b>13,999</b>				
Negative		Positive		Deaths
<b>13,817</b>		<b>182</b>		<b>6</b>
No.	State/Region	COVID-19 Confirmed case	Recovered	Deaths
1.	Yangon	146	74 (1 new)	5
2.	Bago	7	4	1
3.	Sagaing	7	4	-
4.	Chin	7	2	-
5.	Shan(East)	3	2	-
6.	Mandalay	3	3	-
7.	Shan(South)	2	2	-
8.	Shan(North)	2	1	-
9.	Naypyitaw	2	1	-
10.	Mon	1	1	-
11.	Magway	1	1	-
12.	Kachin	1	1	-
13.	Kayar	-	-	-
14.	Rakhine	-	-	-
15.	Ayeyarwaddy	-	-	-
16.	Kayin	-	-	-
17.	Thanintharyi	-	-	-
<b>Total</b>		<b>182</b>	<b>96 (1 new)</b>	<b>6</b>

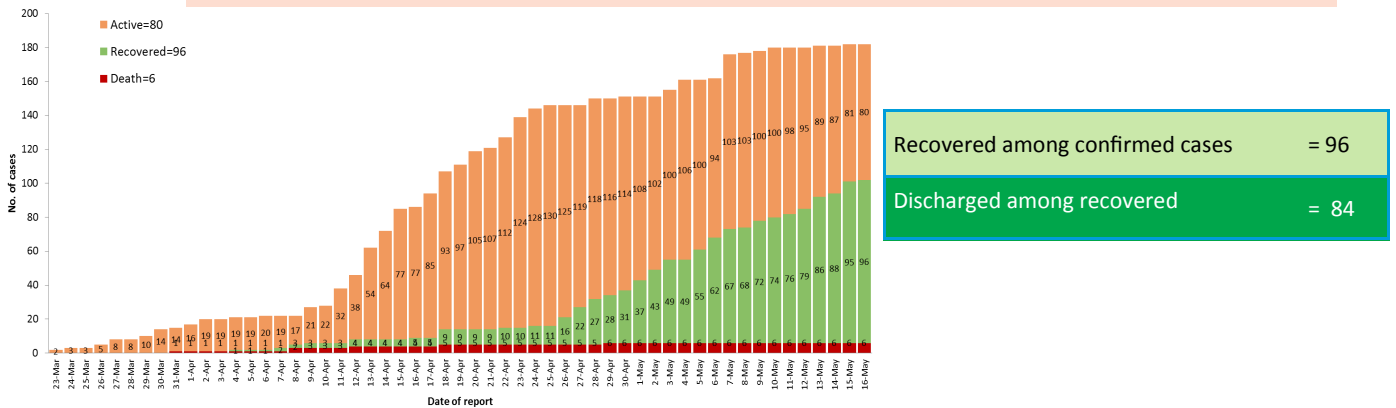
COVID-19 confirmed cases by date of laboratory confirmation (as of 16-5-2020,11:00 PM) n=182



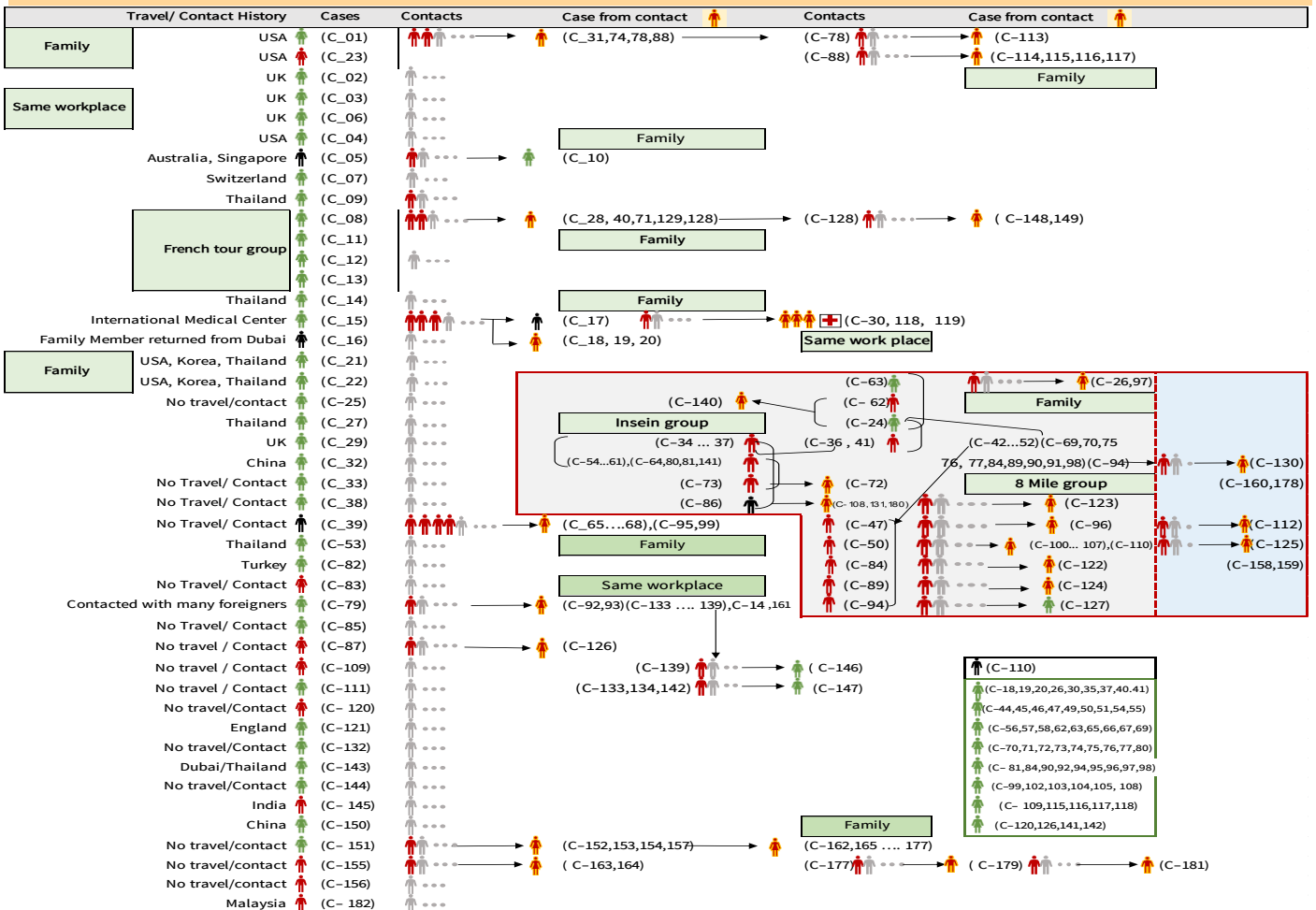
### Total laboratory confirmed cases by date (as of 16.5.2020, 11:00 PM), n= 182



### Cumulative Number of active confirmed cases, recovered and death ( 23.3.2020-16.5.2020), n= 182



### Summary of COVID-19 confirmed cases (as of 16-5-2020), n= 3,761



## Summary of situation (15.5.2020– 16.5.2020)

Type	New	Total (as of 16.5.2020)
Suspected and Person Under Investigation (PUI)	60	4,268
Hospital Quarantine	5	66
Facility Quarantine	2,267	60,030

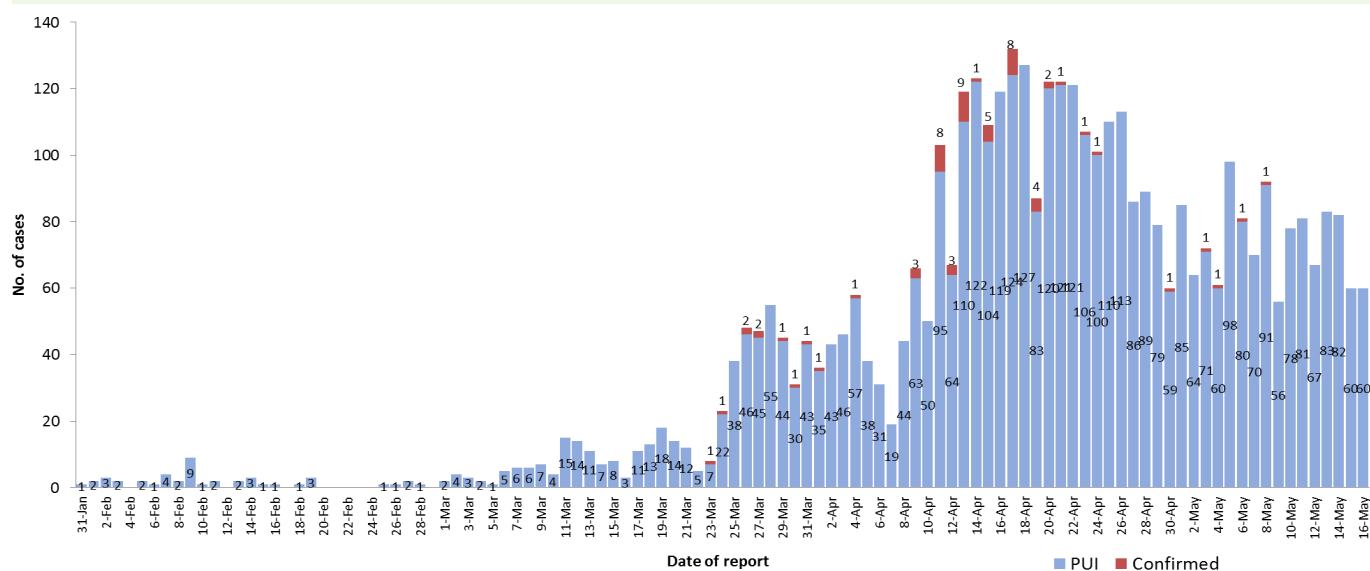
Person under Investigation (PUI) by State/Region hospitals (31.1.2020 – 16.5.2020) n= 4268

### Summary of Facility Quarantine List (as of 16.5.2020)

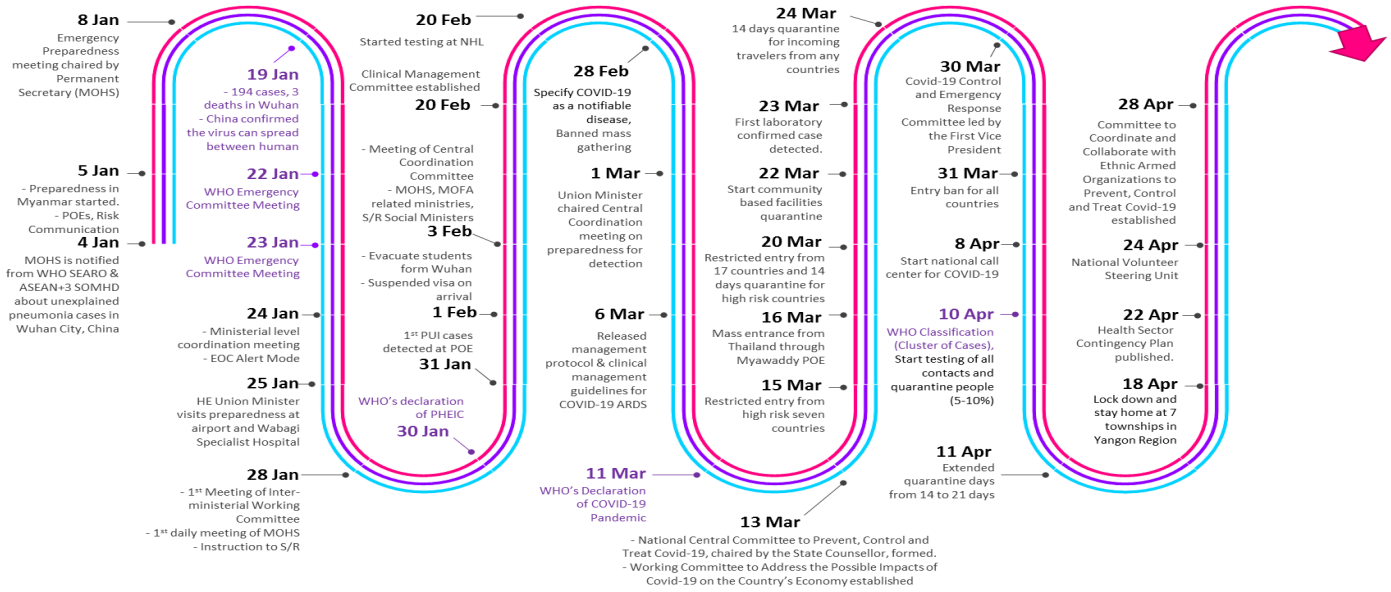
No.	State/Region	PUI
1.	Yangon	2,183
2.	Mandalay	736
3.	Shan (N)	168
4.	Bago	165
5.	Mon	152
6.	Magway	140
7.	Kayin	139
8.	Ayeyarwaddy	90
9.	Shan ( E)	89
10.	Shan (S)	74
11.	Sagaing	73
12.	Kayah	63
13.	Naypyitaw	58
14.	Tanintharyi	48
15.	Rakhine	46
16.	Kachin	26
17.	Chin	18
<b>Total</b>		<b>4,268</b>

No.	State/Region	No. of facilities	Total no. of quarantine people
1.	Magway	2,745	11,323
2.	Sagaing	2,076	10,095
3.	Ayeyarwaddy	1,689	7,477
4.	Mandalay	1,200	7,230
5.	Kachin	591	6,757
6.	Rakhine	574	3,799
7.	Bago	529	3,234
8.	Shan (N)	339	2,660
9.	Yangon	48	2,054
10.	Naypyitaw	19	1,139
11.	Shan(S)	114	1,045
12.	Tanintharyi	134	986
13.	Shan ( E)	39	658
14.	Kayin	128	639
15.	Chin	34	408
16.	Mon	36	332
17.	Kayah	18	194
<b>Total</b>		<b>10,313</b>	<b>60,030</b>

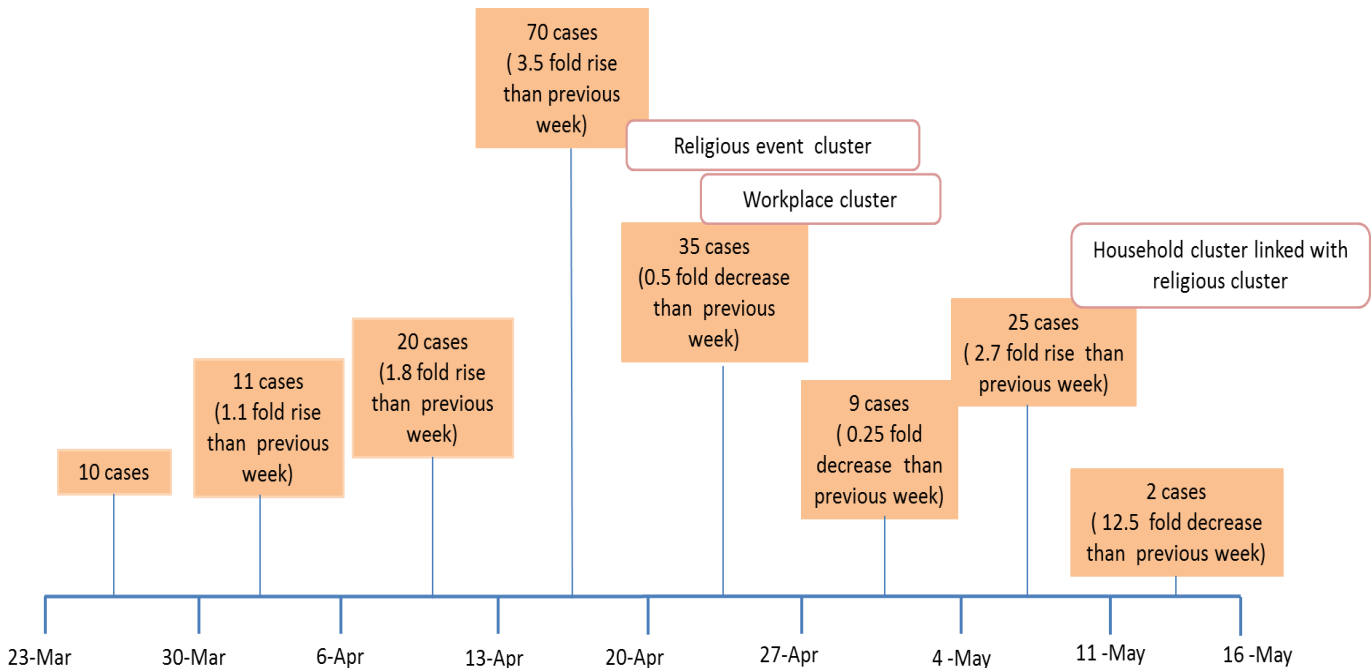
### COVID-19 laboratory confirmed cases among PUI (31.1.2020-16.5.2020), n( PUI)= 4268, n( confirmed)=62



# Timeline of Preparedness and Response to COVID-19 in Myanmar



## Summary of new confirmed cases detection after first cases (as of 16.5.2020)



- Confirmed cases were detected as peak in the 4<sup>th</sup> week after first confirmed cases due to religious event cluster .
- Confirmed cases were decreased but still rise other than first 3 weeks due to religious event cluster and workplace cluster.
- During week - 7 after first cases, confirmed cases were raised again due to household cluster linked with religious cluster.