



# Ministry of Health and Sports (Myanmar)

## Department of Public Health

### Central Epidemiology Unit

( 8 June 2020)

### Coronavirus Disease 2019 (COVID-19)

Situation Report - 62

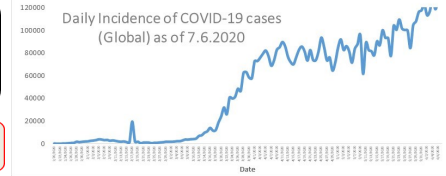
Data as reported by States and Regions by 12:00PM MST 7 June 2020

**Global Situation**  
(WHO situation report - 139)  
data as of 14:30 MST 7 June 2020

**Confirmed cases**  
**6,799,713**

**Deaths**  
**397,388**

**Case Fatality Rate**  
**5.8 %**



### Myanmar Situation

**Total tested**  
**39,211**

**Confirmed cases**  
**243**

**Negative**  
**38,968**

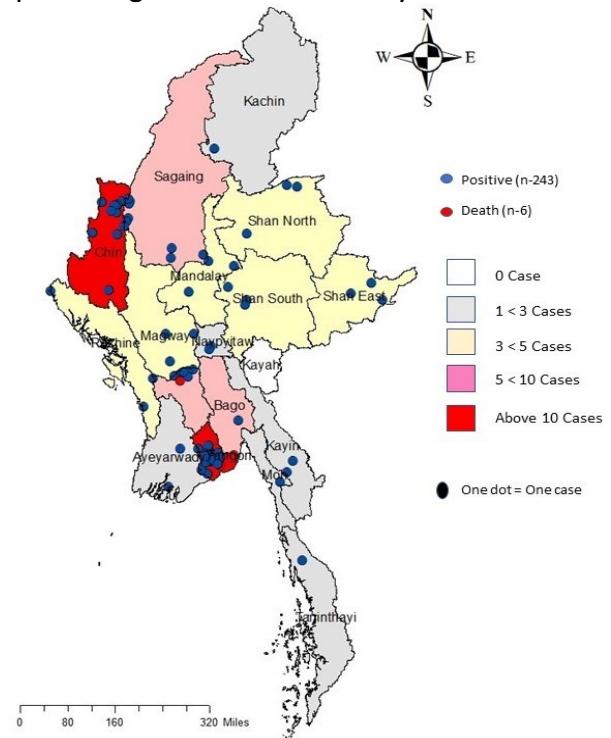
**Recovered**  
**159**  
65.4% of confirmed cases

**Active**  
**78**  
32.0% of confirmed cases

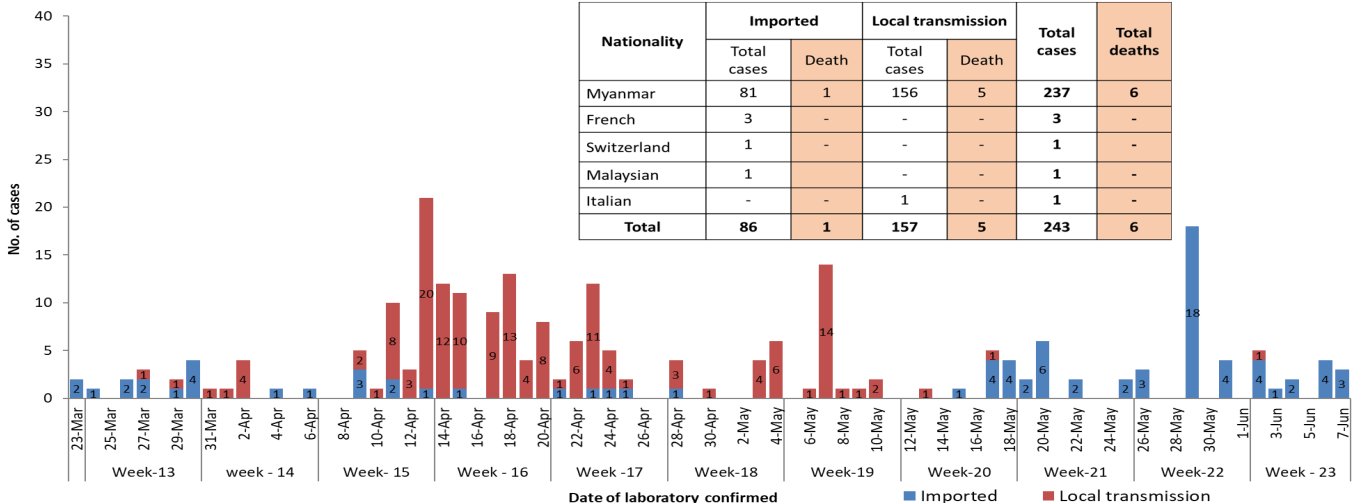
**Death**  
**6**  
2.4% of confirmed cases

No.	State/Region	COVID-19 Confirmed case	Recovered	Deaths
1.	Yangon	189 (2 New)	124 (3 New)	5
2.	Chin	10	3	-
3.	Sagaing	9	7	-
4.	Bago	8	6	1
5.	Shan(East)	3	3	-
6.	Mandalay	3	3	-
7.	Shan(South)	3	2	-
8.	Shan(North)	3	2	-
9.	Rakhine	3	-	-
10.	Magway	3 (1 New)	2	-
11.	Naypyitaw	2	2	-
12.	Kayin	2	1	-
13.	Ayeyarwaddy	2	1	-
14.	Mon	1	1	-
15.	Kachin	1	1	-
16.	Thanintharyi	1	1	-
17.	Kayah	-	-	-
<b>Total</b>		<b>243 (3 new)</b>	<b>159 (3 New)</b>	<b>6</b>

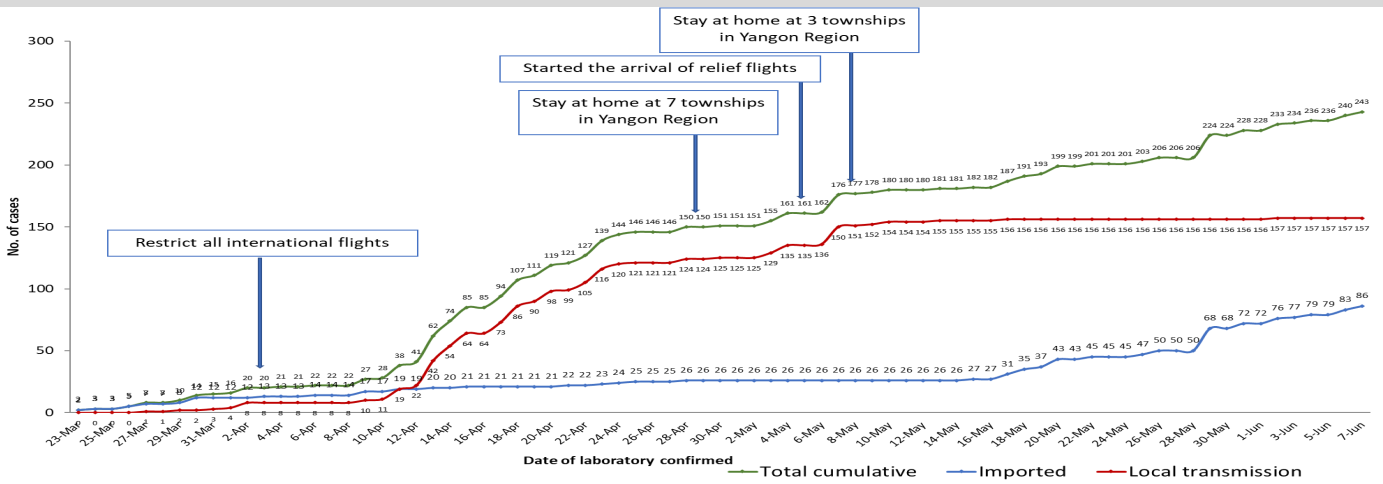
Map showing COVID-19 laboratory confirmed cases



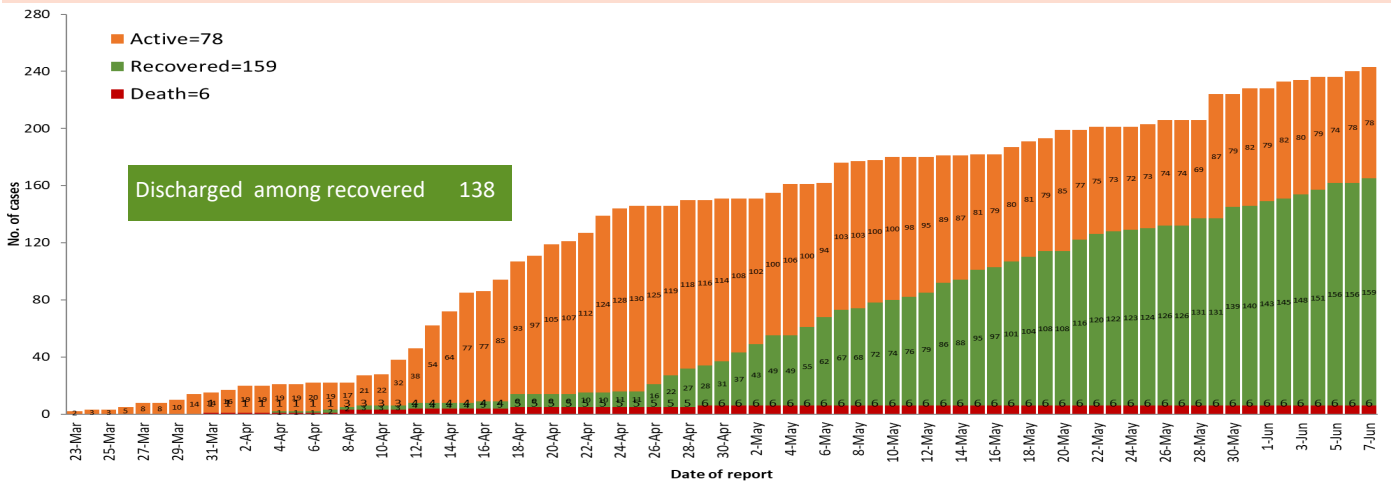
COVID-19 confirmed cases by types of transmissions (as of 7-6-2020,12:00 pm) n=243



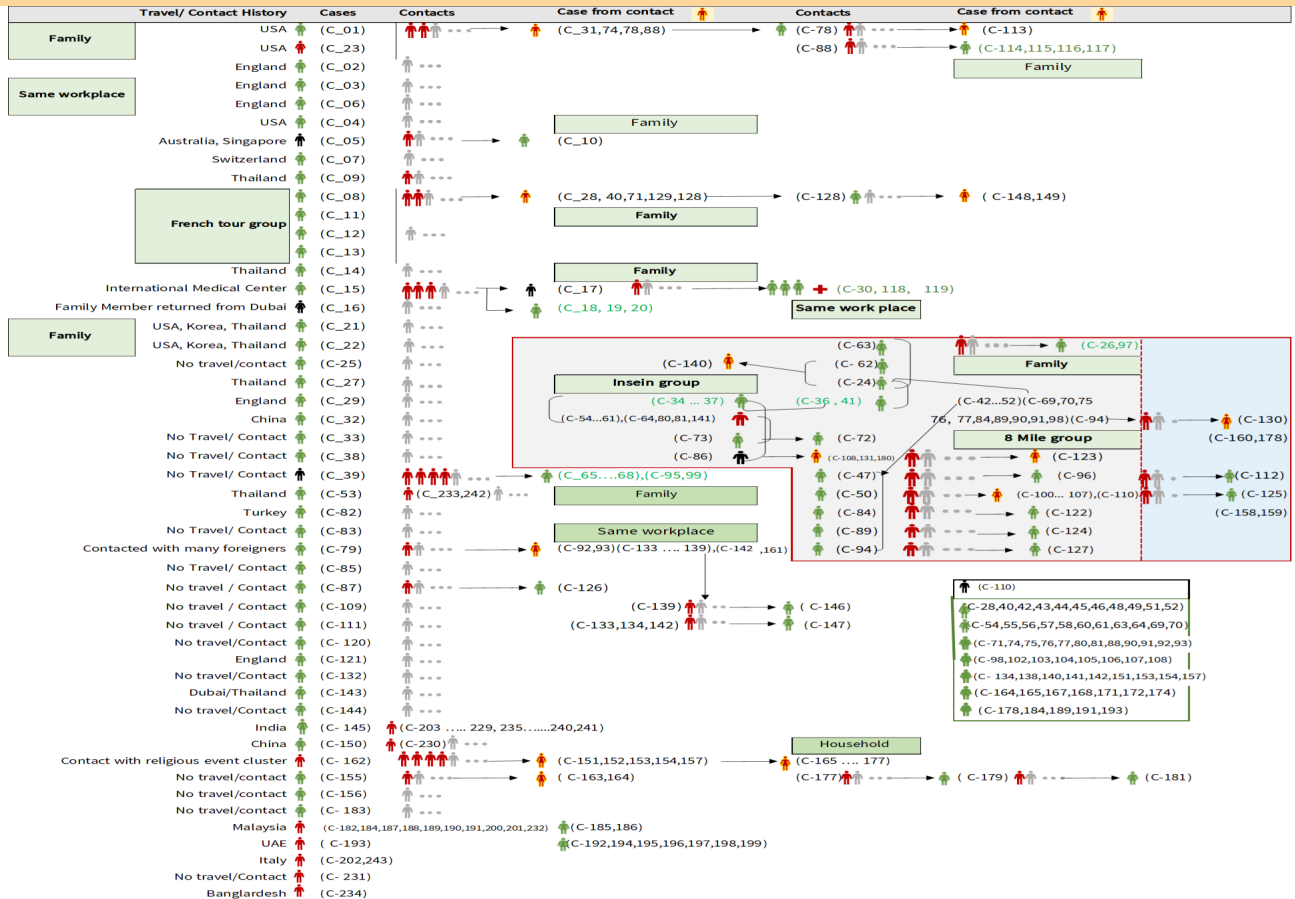
### Total laboratory confirmed cases by date (as of 7.6.2020, 12:00 pm), n= 243



### Cumulative Number of active confirmed cases, recovered and deaths ( 23.3.2020 – 7-6-2020), n (cumulative)=243



### Summary of COVID-19 confirmed cases (as of 7-6-2020) ,n (contacts)= 4,943



## Summary of current situation

Type	New (6.6.2020 -7.6.2020)	Total (on 7.6.2020)
Suspected and Person Under Investigation (PUI)	43	279
Hospital Quarantine	7	117
Facility Quarantine	2,206	48,255

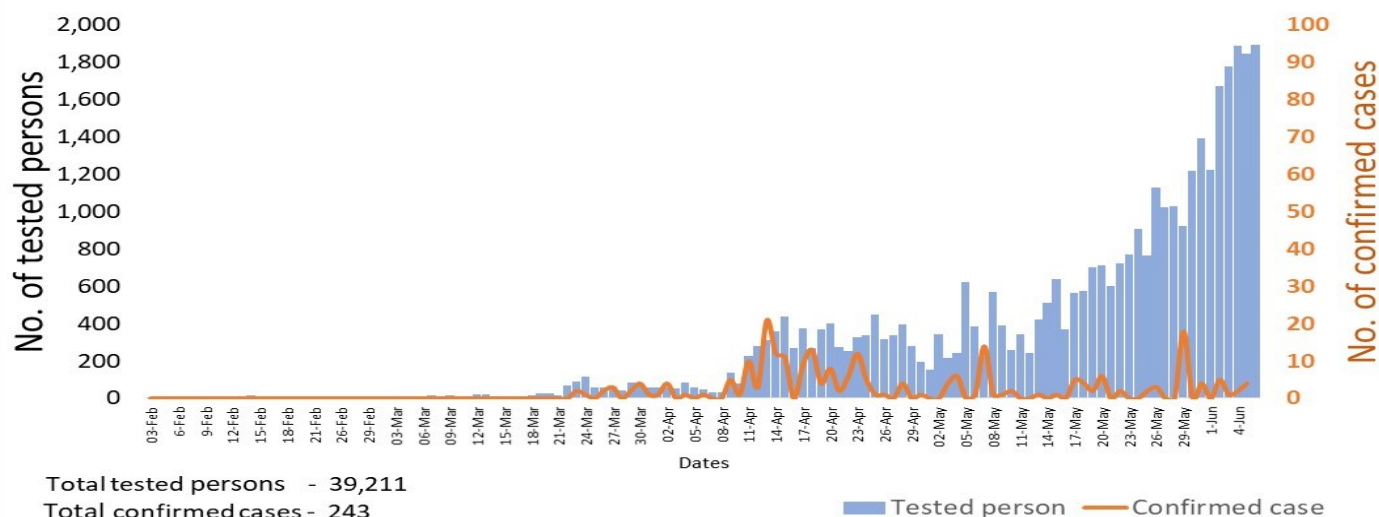
Person under Investigation (PUI) by State/Region hospitals (31.1.2020 – 7.6.2020) n= 5,333

No.	State/Region	PUI
1.	Yangon	2,757
2.	Mandalay	976
3.	Mon	199
4.	Shan(N)	190
5.	Kayin	185
6.	Bago	175
7.	Magway	175
8.	Shan ( E)	110
9.	Ayeyarwaddy	99
10.	Shan(S)	92
11.	Sagaing	79
12.	Kayah	74
13.	Rakhine	61
14.	Naypyitaw	60
15.	Thanintharyi	52
16.	Kachin	28
17.	Chin	21
<b>Total</b>		<b>5,333</b>

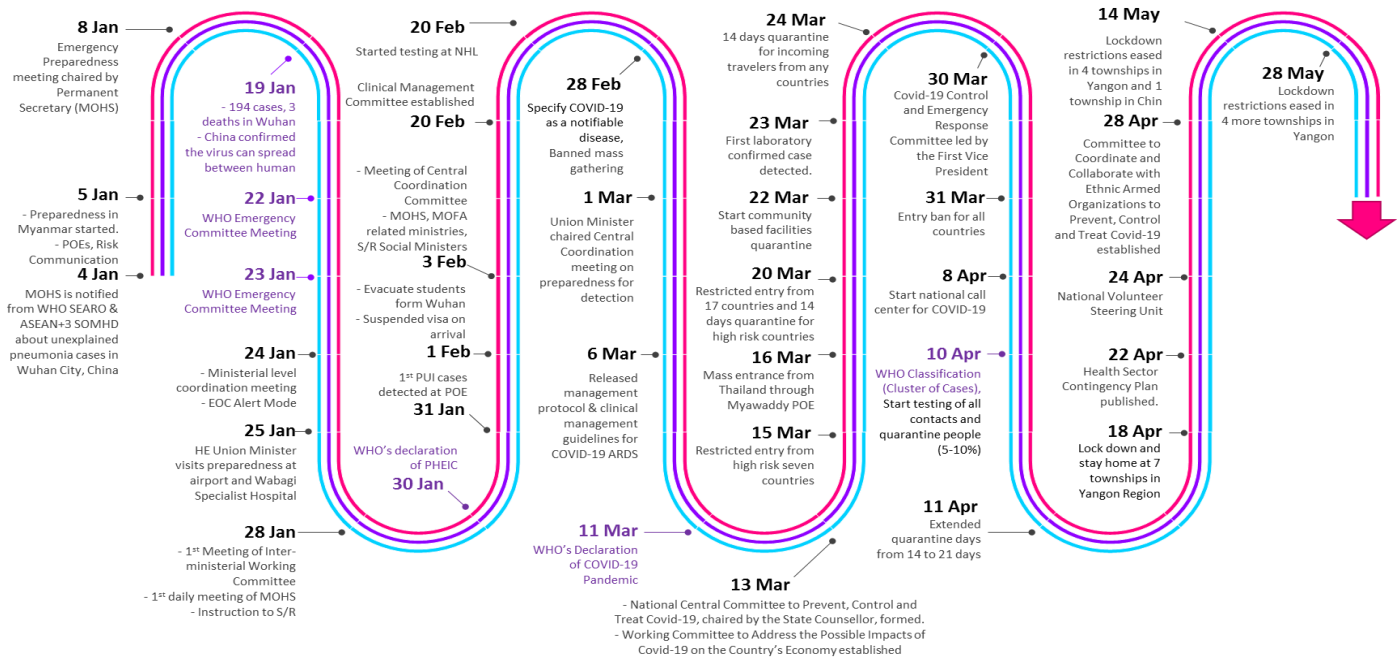
No. of Facility Quarantine sites and Quarantined people on 7.6.2020

No.	State/Region	No. of facilities	Total no. of quarantine
1.	Magway	2,866	9,968
2.	Bago	528	6,163
3.	Kachin	721	4,930
4.	Sagaing	1,856	3,633
5.	Kayin	642	3,410
6.	Mandalay	441	3,247
7.	Rakhine	631	3,057
8.	Yangon	80	2,735
9.	Mon	143	2,580
10.	Ayeyarwaddy	719	2,451
11.	Shan North	421	1,797
12.	Shan S	116	1,320
13.	Naypyitaw	19	1,243
14.	Tanintharyi	189	1,124
15.	Kayah	18	227
16.	Chin	38	226
17.	Shan East	11	144
<b>Total</b>		<b>9,439</b>	<b>48,255</b>

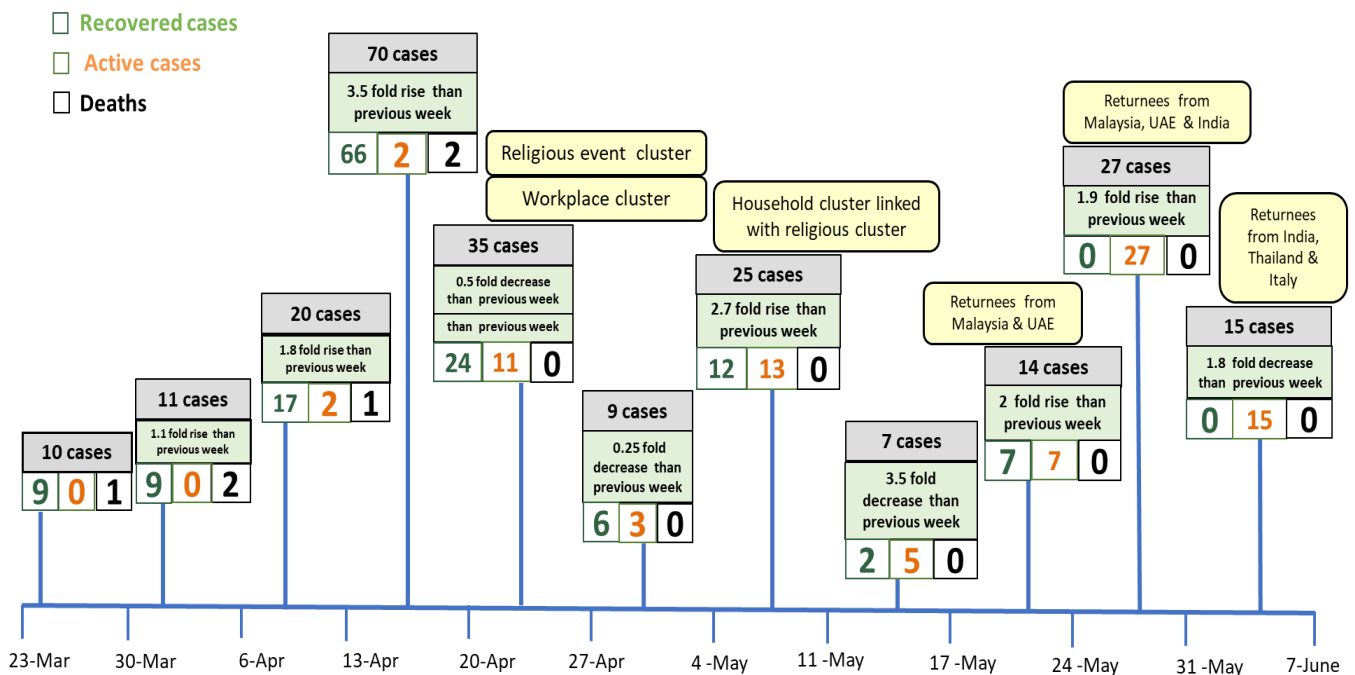
### COVID-19 confirmed cases among tested by date (as of 7.6.2020)



# Timeline of Preparedness and Response to COVID-19 in Myanmar (as of 7.6.2020)



## Summary of new confirmed cases detection after first two cases (as of 7.6.2020)



- Confirmed cases were detected as peak in the 4th week after first confirmed cases due to religious event cluster .
- Confirmed cases were decreased but still raised than the first 3 weeks due to religious event cluster and workplace cluster.
- There were an increase in numbers of cases in the 7th week after the first two cases due to household cluster linked with religious cluster.
- Confirmed cases were detected by nearly two fold rise in the 9th and 10th weeks after first two cases because of returnees coming back by relief flights.

Hotline Number— 0673 420 268

Data source - CEU, DMS, NHL, PHL(MDY and MLM), DMR, DSGH, State and Region