



Ministry of Health and Sports (Myanmar)

Department of Public Health

Central Epidemiology Unit

(8 July 2020)

Coronavirus Disease 2019 (COVID-19)

Situation Report - 92

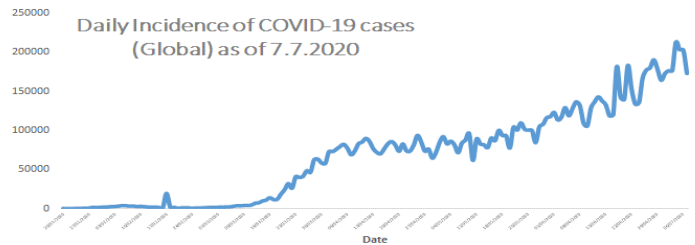
Data as reported by States and Regions by 9:00 PM MST 7 July 2020

Global Situation (WHO situation report - 169) data as of 14:30 MST 7 July 2020

Confirmed cases
11,500,302

Deaths
535,759

Case Fatality Rate
4.6 %



Myanmar Situation

Total Tested
86,821

Confirmed Cases
316

Negative
86,505

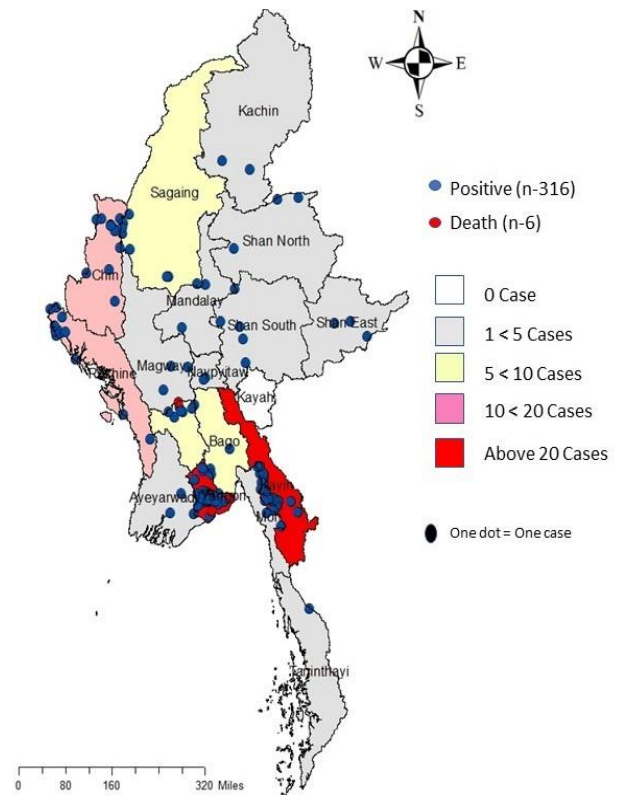
Recovered
250
79.1% of Confirmed cases

Active
60
18.9% of Confirmed cases

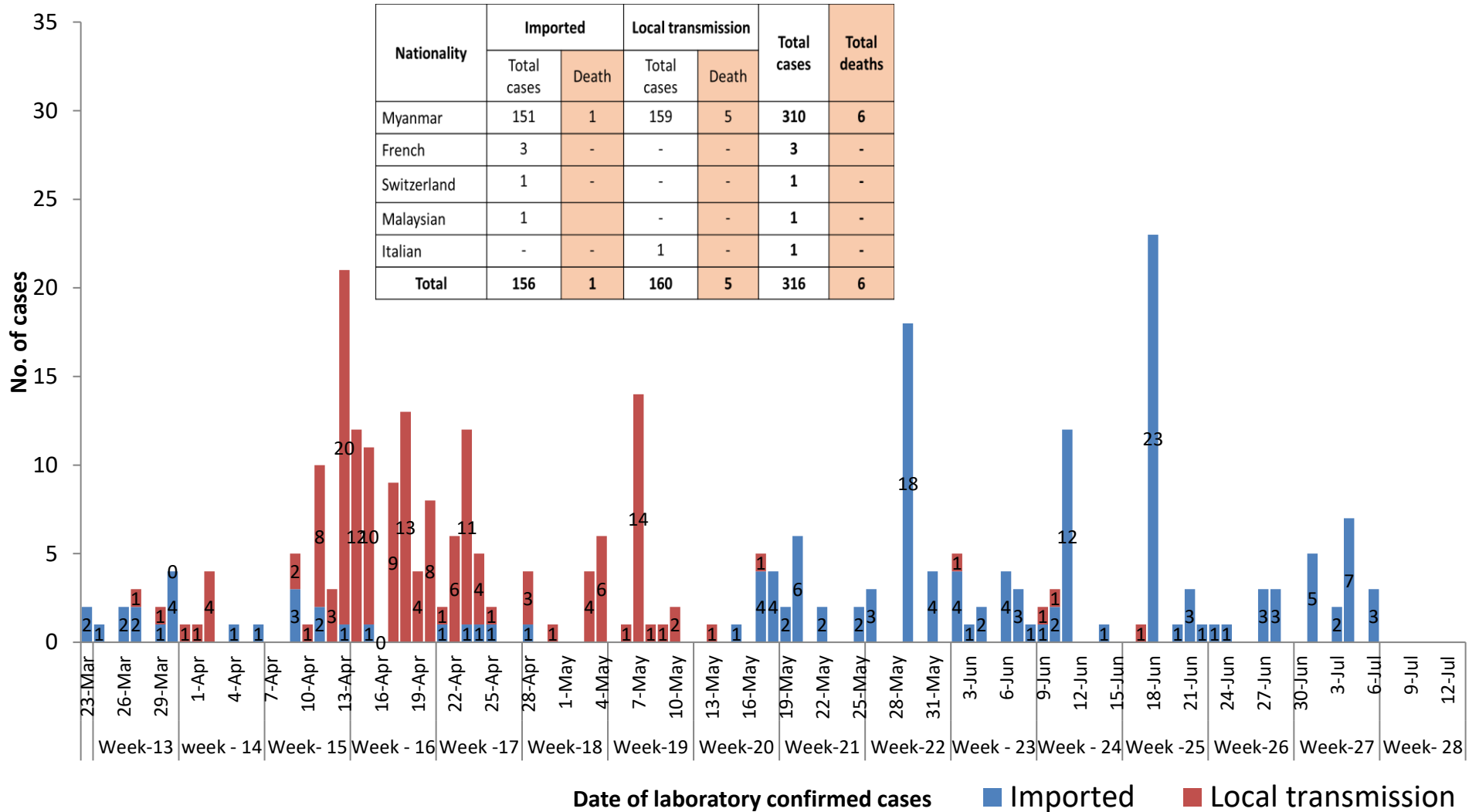
Death
6
1.89% of Confirmed cases

No	State/Region	COVID –19 Confirmed case	Recovered	Deaths
1	Yangon	225	176 (2 New)	5
2	Kayin	26	16(3 New)	-
3	Rakhine	12	8	-
4	Chin	10	10	-
5	Sagaing	9	8	-
6	Bago	9	7	1
7	Shan (South)	4	4	-
8	Mandalay	3	3	-
9	Shan (East)	3	4	-
10	Shan (North)	3	2	-
11	Magway	3	3	-
12	Naypyitaw	2	2	-
13	Ayeyarwaddy	2	2	-
14	Kachin	2	2	-
15	Mon	2	2	-
16	Thanintharyi	1	1	-
17	Kayah	-	-	-
Total		316	250 (5 New)	6

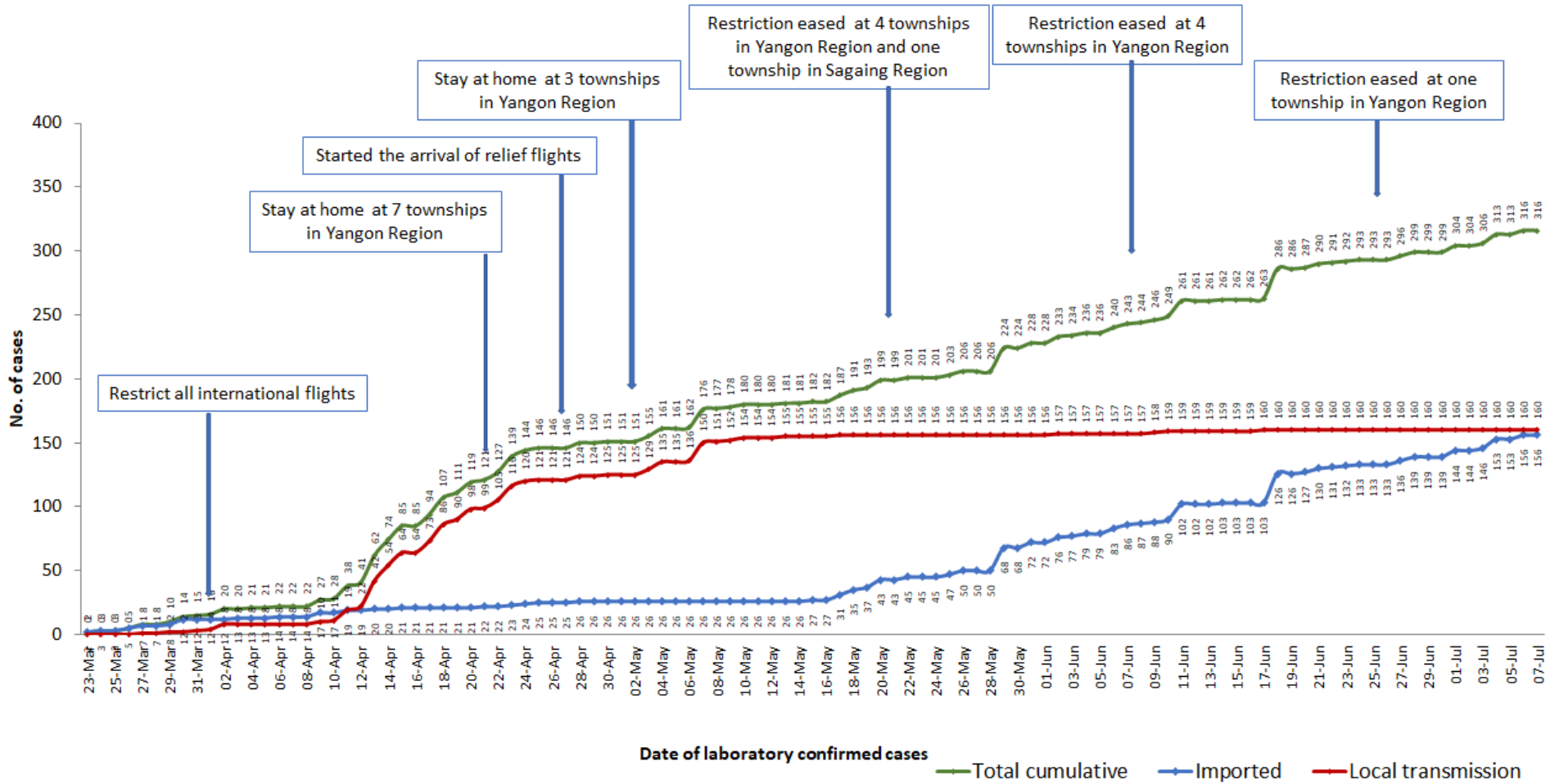
Map showing COVID-19 laboratory confirmed cases



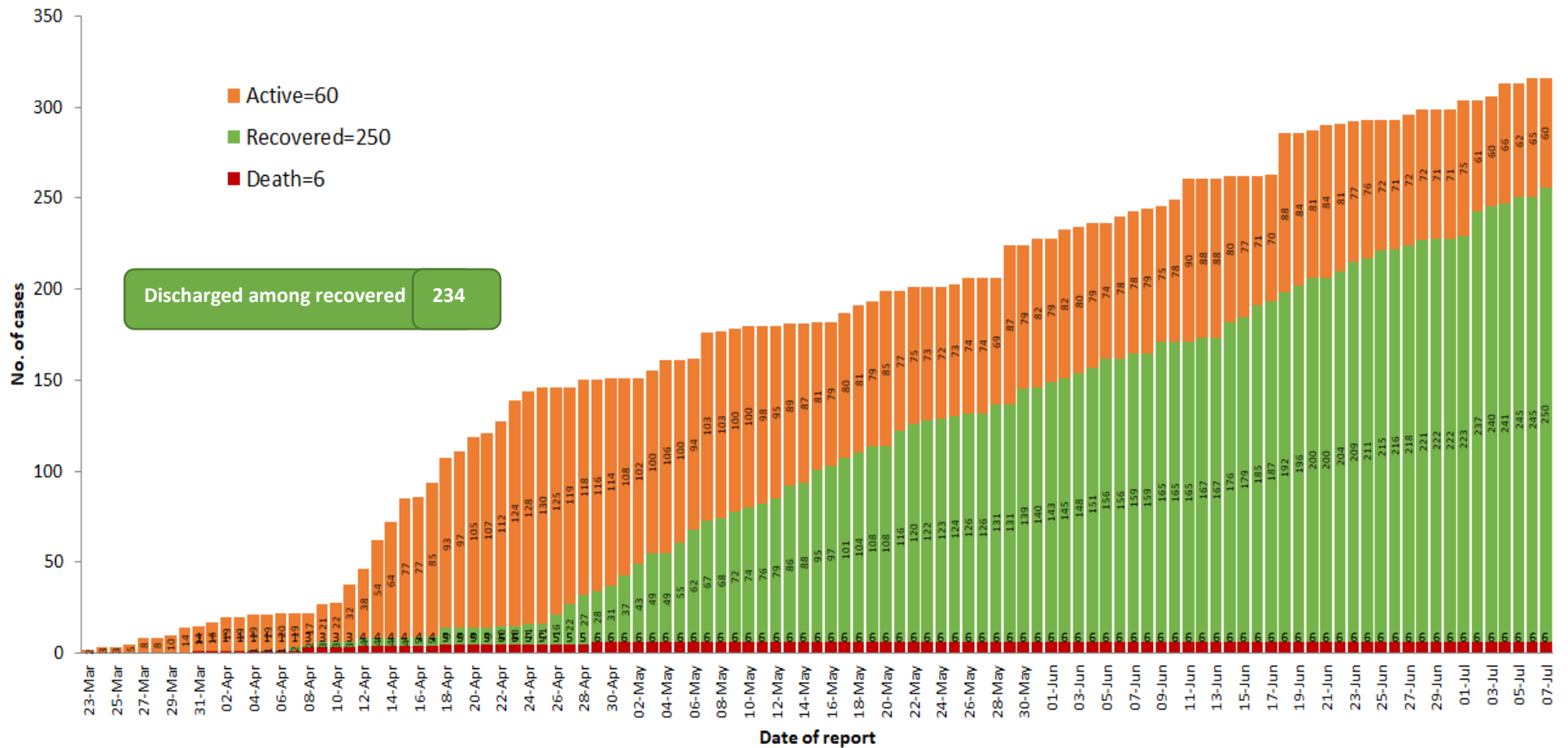
COVID-19 confirmed cases by types of transmissions (as of 7.7.2020, 9:00 pm) n=316



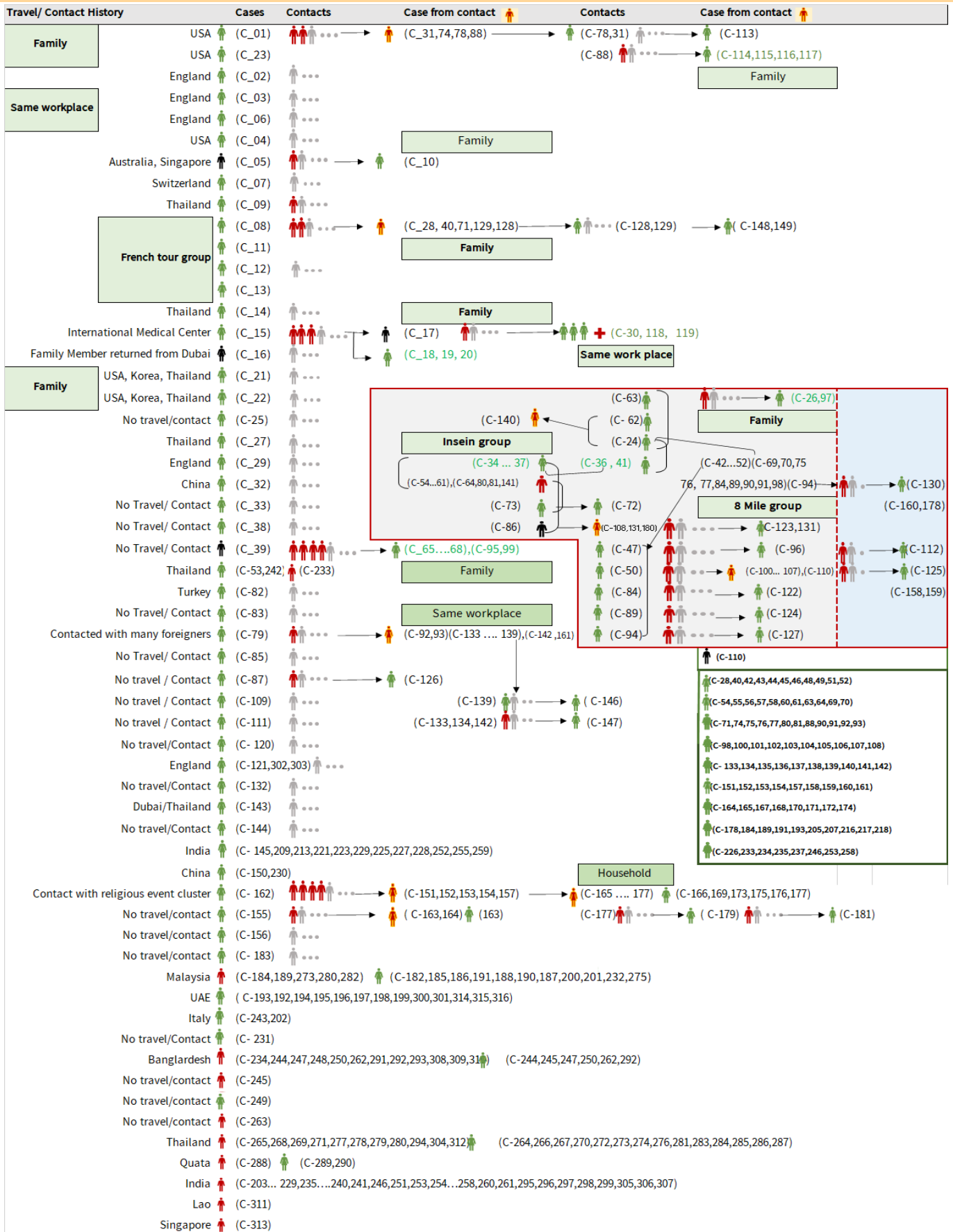
Total laboratory confirmed cases by date (as of 7.7.2020, 9:00 pm), n= 316



Cumulative Number of active confirmed cases, recovered and deaths (23.3.2020 – 7.7.2020), n (cumulative)=316



Summary of COVID-19 confirmed cases (as of 7.7.2020), n (contacts)= 5,681



Summary of current situation

Type	New (6.7.2020-7.7.2020)	Total (on 7.7.2020)
Suspected and Person Under Investigation (PUI)	24	194
Hospital Quarantine	5	54
Facility Quarantine	1,445	23,975

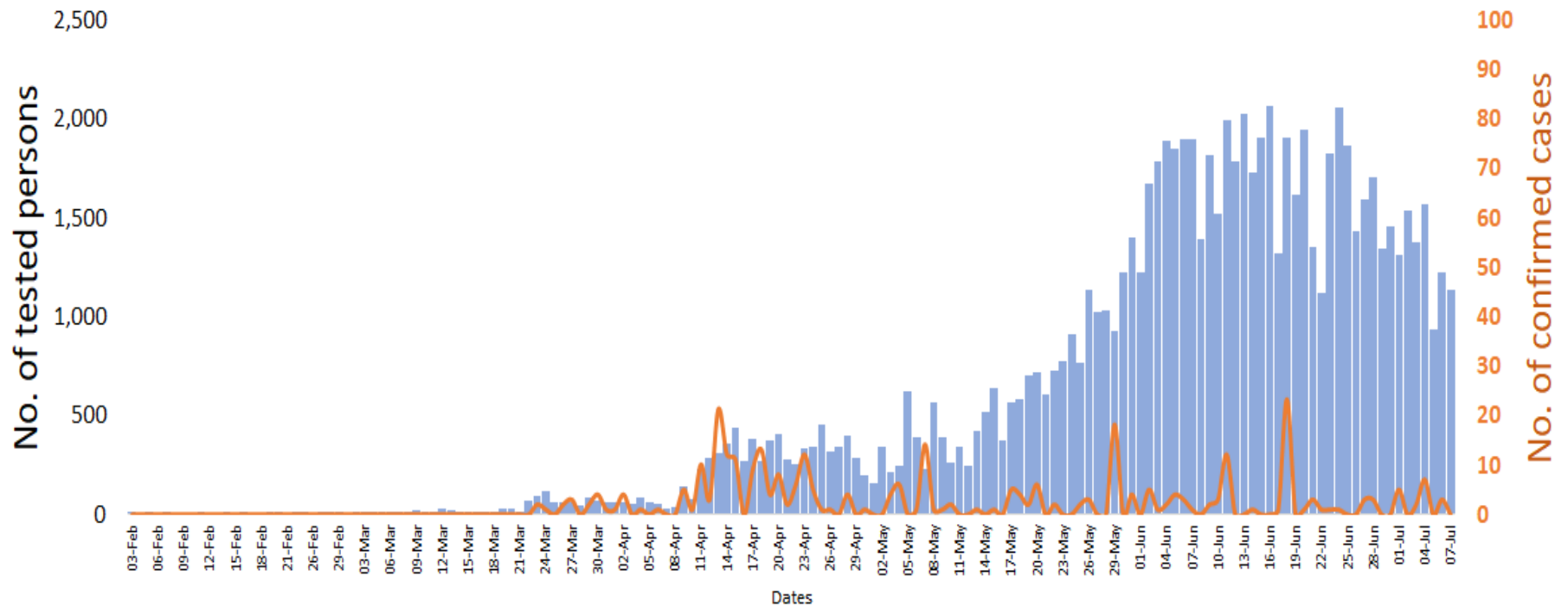
Person under Investigation (PUI) by State/Region hospitals (31.1.2020 – 7.7.2020) n= 6,187

No.	State/Region	PUI
1	Yangon	3,140
2	Mandalay	1,229
3	Kayin	247
4	Mon	232
5	Shan (N)	211
6	Magway	203
7	Bago	180
8	Shan (E)	120
9	Ayeyarwaddy	102
10	Shan (S)	99
11	Sagaing	89
12	Kayah	76
13	Rakhine	68
14	Thanintharyi	67
15	Naypyitaw	63
16	Kachin	35
17	Chin	26
Total		6,187

No. of Facility Quarantine sites and Quarantined people on 7.7.2020

No.	State/Region	No. of facilities	Total no. of quarantine
1	Yangon	72	4,349
2	Bago	277	3,341
3	Kayin	373	2,711
4	Mon	266	2,541
5	Magway	2,571	2,330
6	Mandalay	117	1,380
7	Kachin	417	1,306
8	Tanintharyi	189	1,141
9	Sagaing	969	1,100
10	Rakhine	293	1022
11	Shan South	117	849
12	Ayeyarwaddy	184	816
13	Naypyitaw	4	459
14	Shan North	243	236
15	Chin	16	167
16	Shan East	11	121
17	Kayah	18	106
Total		6,137	23,975

COVID-19 confirmed cases among tested by date (as of 7.7.2020)



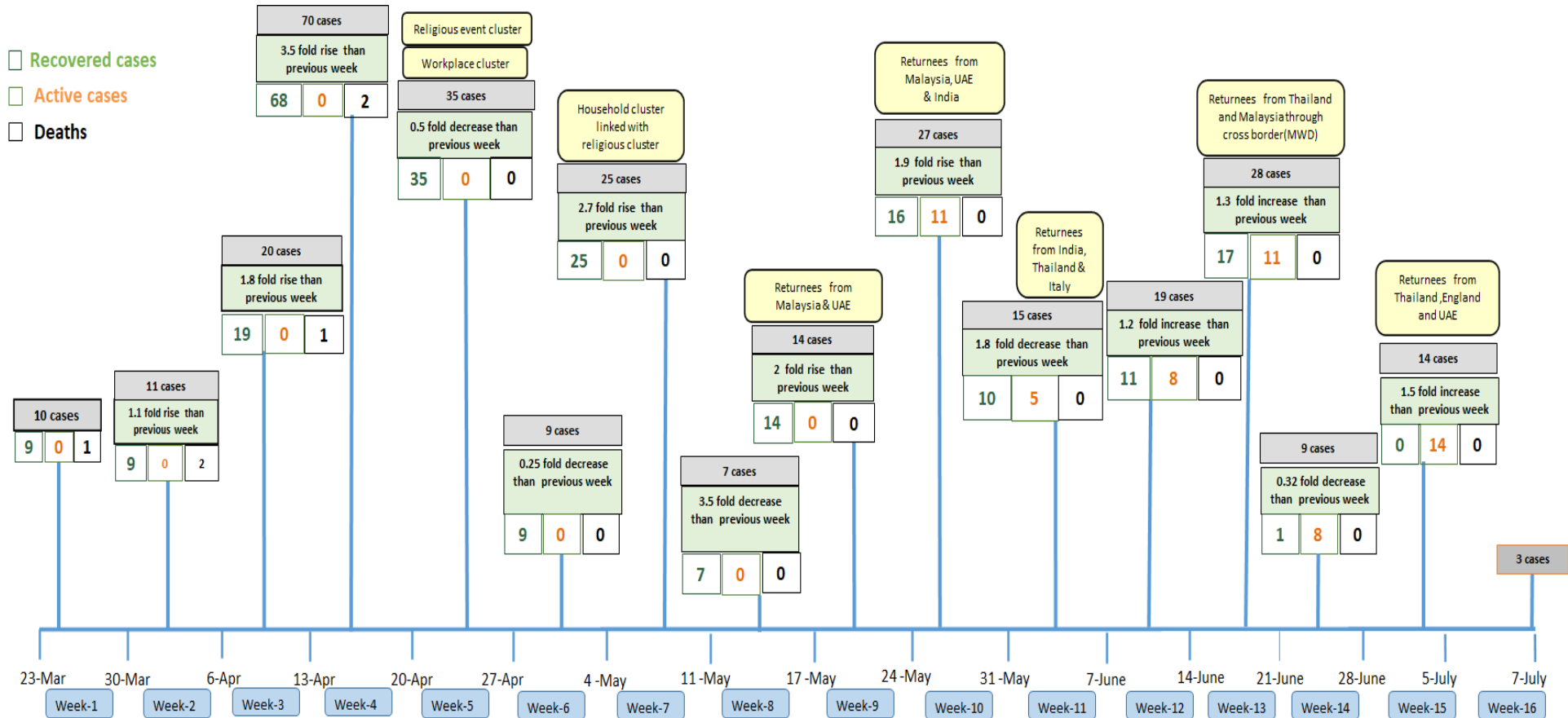
Total tested persons - 86,821

Total confirmed cases - 316

■ Tested person

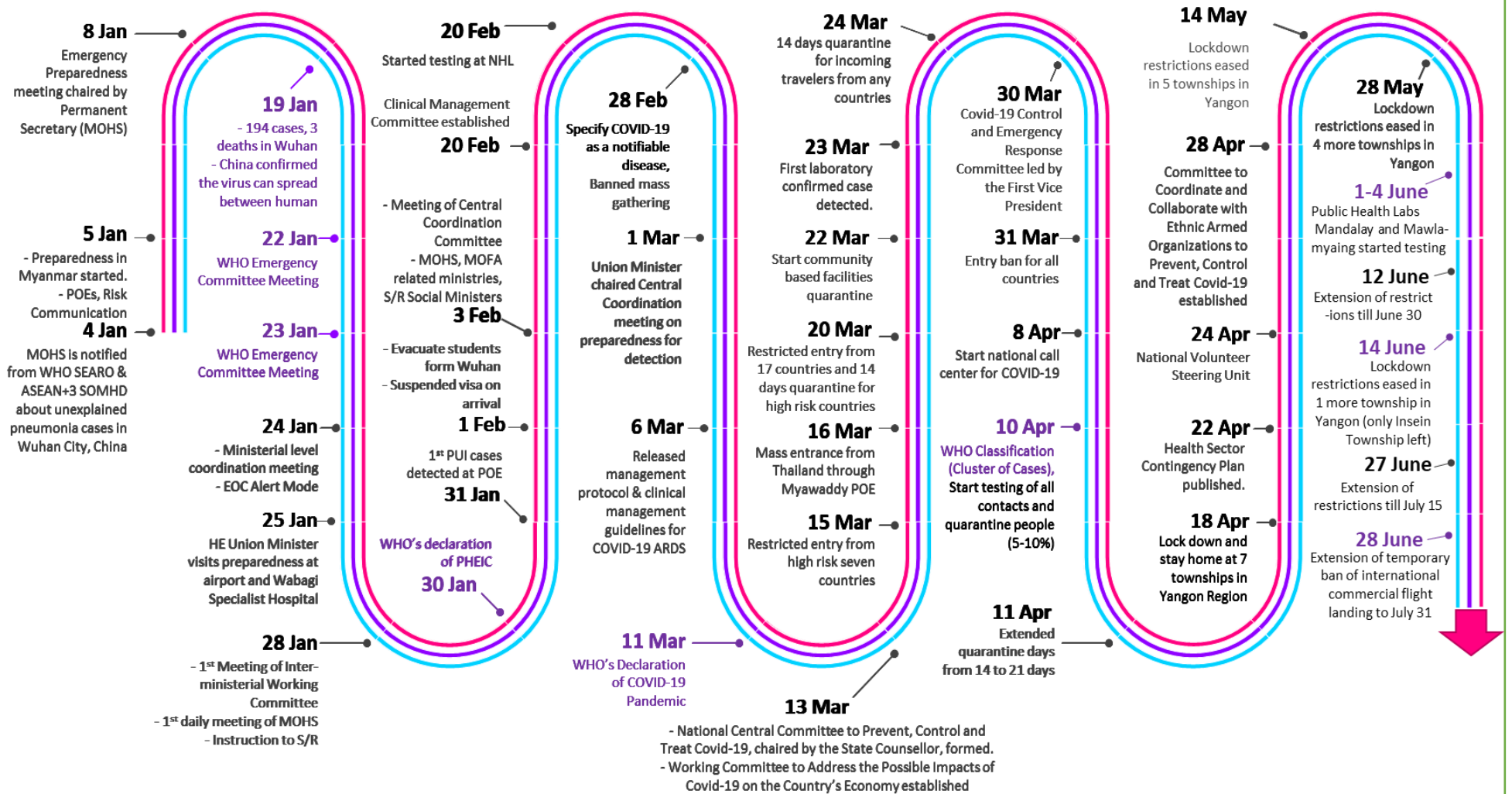
— Confirmed case

Summary of new confirmed cases detection after first two cases (as of 7.7.2020)



- Confirmed cases were detected as a peak in the 4th week after first confirmed cases due to the religious event cluster.
- Confirmed cases were decreased but still raised than the first 3 weeks due to the religious event cluster and workplace cluster.
- There were an increased in numbers of cases in the 7th week after the first two cases due to the household cluster linked with a religious cluster.
- Confirmed cases were detected by a nearly two-fold rise in the 9th and 10th weeks after the first two cases because of returnees coming back by relief flights.

Timeline of Preparedness and Response to COVID-19 in Myanmar (as of 7.7.2020)



Hotline Number— 0673 420 268

Data source - CEU, DMS, NHL, PHL (MDY and MLM), DMR, DSGH, State and Region Health Departments