



# Ministry of Health and Sports (Myanmar)

## Department of Public Health

### Central Epidemiology Unit

( 3 June 2020)

### Coronavirus Disease 2019 (COVID-19)

Situation Report - 57

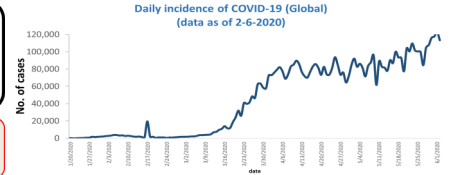
Data as reported by States and Regions by 11:30 PM MST 2 June 2020

**Global Situation**  
(WHO situation report - 134)  
data as of 14:30 MST 2 June 2020

**Confirmed cases**  
**6,194,533**

**Deaths**  
**376,320**

**Case Fatality Rate**  
**6.1 %**



### Myanmar Situation

**Total tested**  
**29,923**

**Confirmed cases**  
**233**

**Negative**  
**29,695**

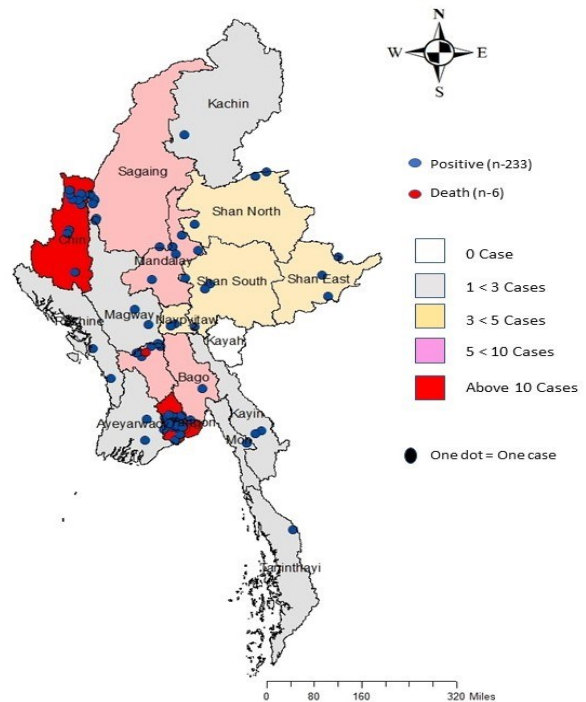
**Recovered**  
**145**  
62.2% of confirmed cases

**Active**  
**82**  
35.1% of confirmed cases

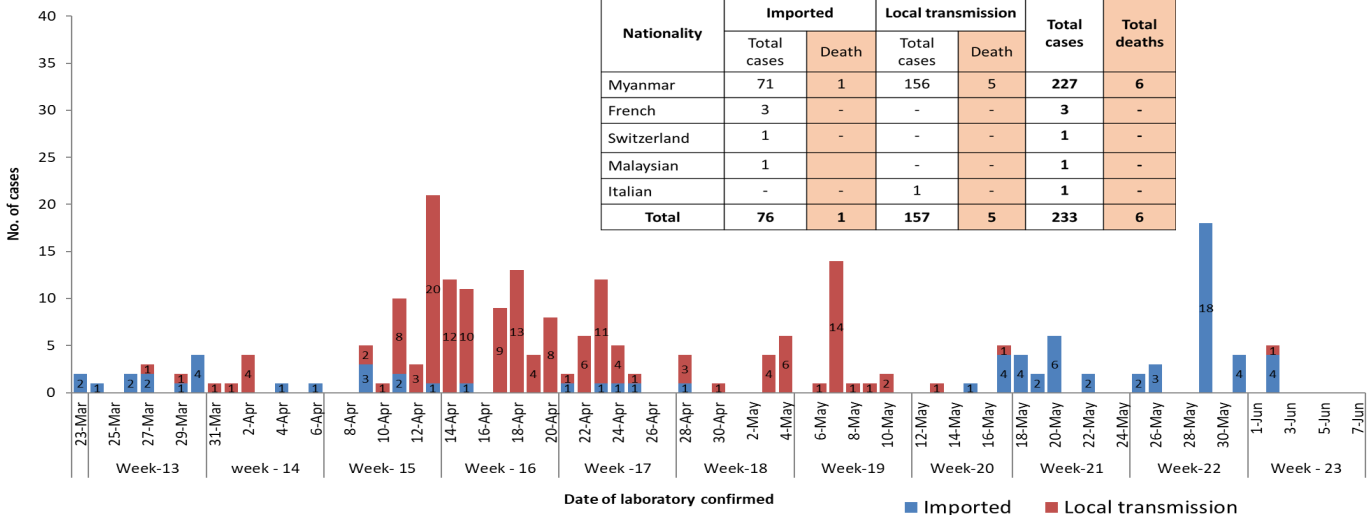
**Death**  
**6**  
2.6% of confirmed cases

No.	State/Region	COVID-19 Confirmed case	Recovered	Deaths
1.	Yangon	183 (1 New)	110	5
2.	Chin	10 (1 New)	3	-
3.	Bago	8(1 New)	6	1
4.	Sagaing	7	7	-
5.	Shan(East)	3	3	-
6.	Mandalay	3	3	-
7.	Shan(South)	3 (1 New)	2	-
8.	Shan(North)	3 (1 New)	2	-
9.	Naypyitaw	2	2	-
10.	Kayin	2	2	-
11.	Magway	2	1 (1 new)	-
12.	Rakhine	2	-	-
13.	Ayeyarwaddy	2	1 (new)	-
14.	Mon	1	1	-
15.	Kachin	1	1	-
16.	Thanintharyi	1	1	-
17.	Kayah	-	-	-
<b>Total</b>		<b>233 (5 new)</b>	<b>145 (2 new)</b>	<b>6</b>

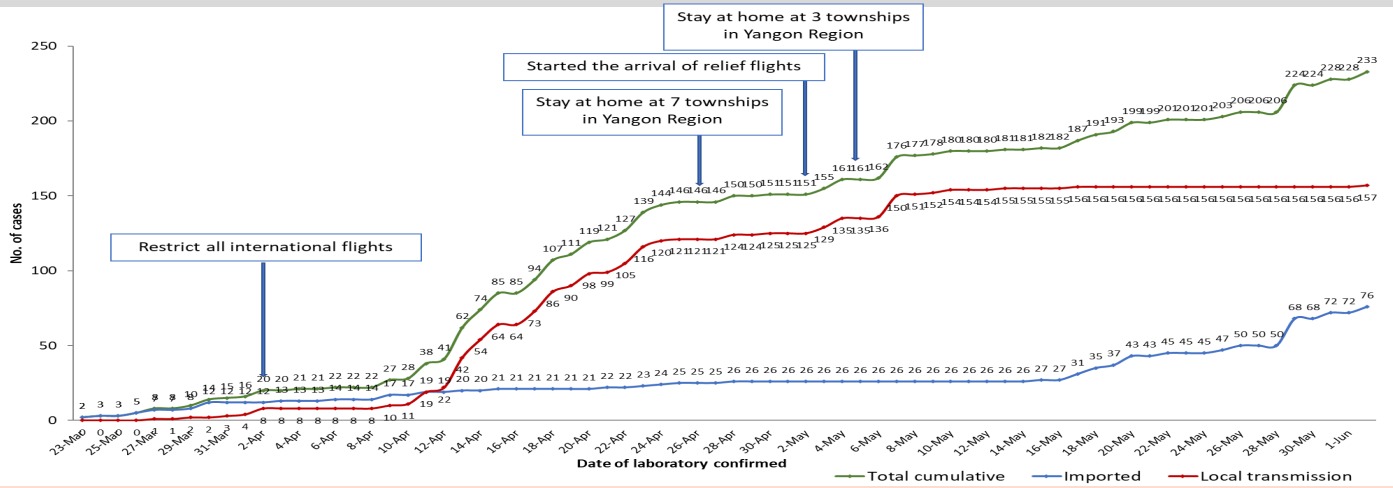
Map showing COVID-19 laboratory confirmed cases



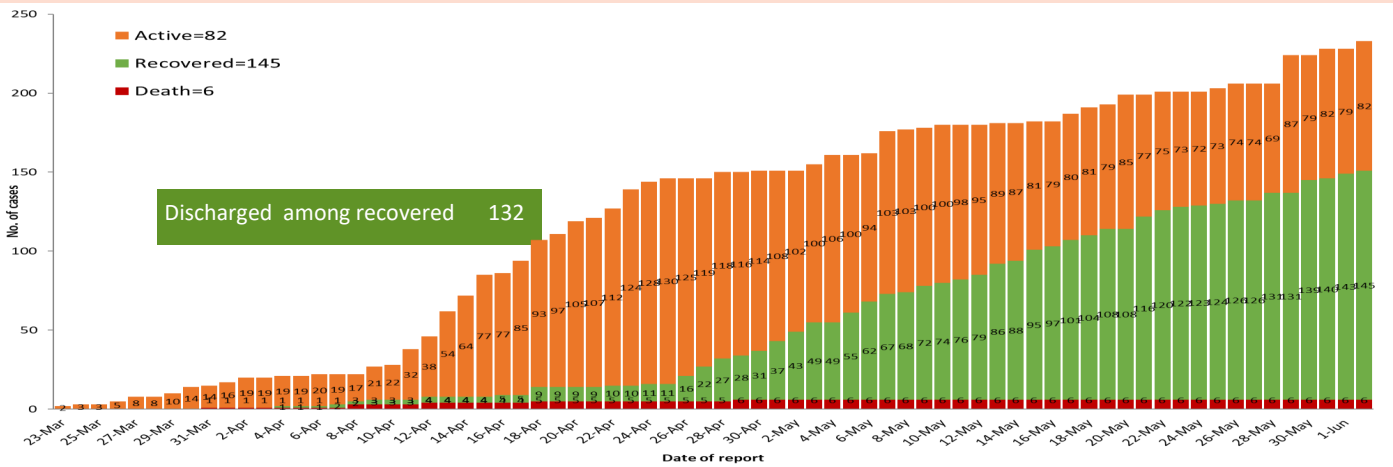
COVID-19 confirmed cases by types of transmissions (as of 2-6-2020,11:30 pm) n=233



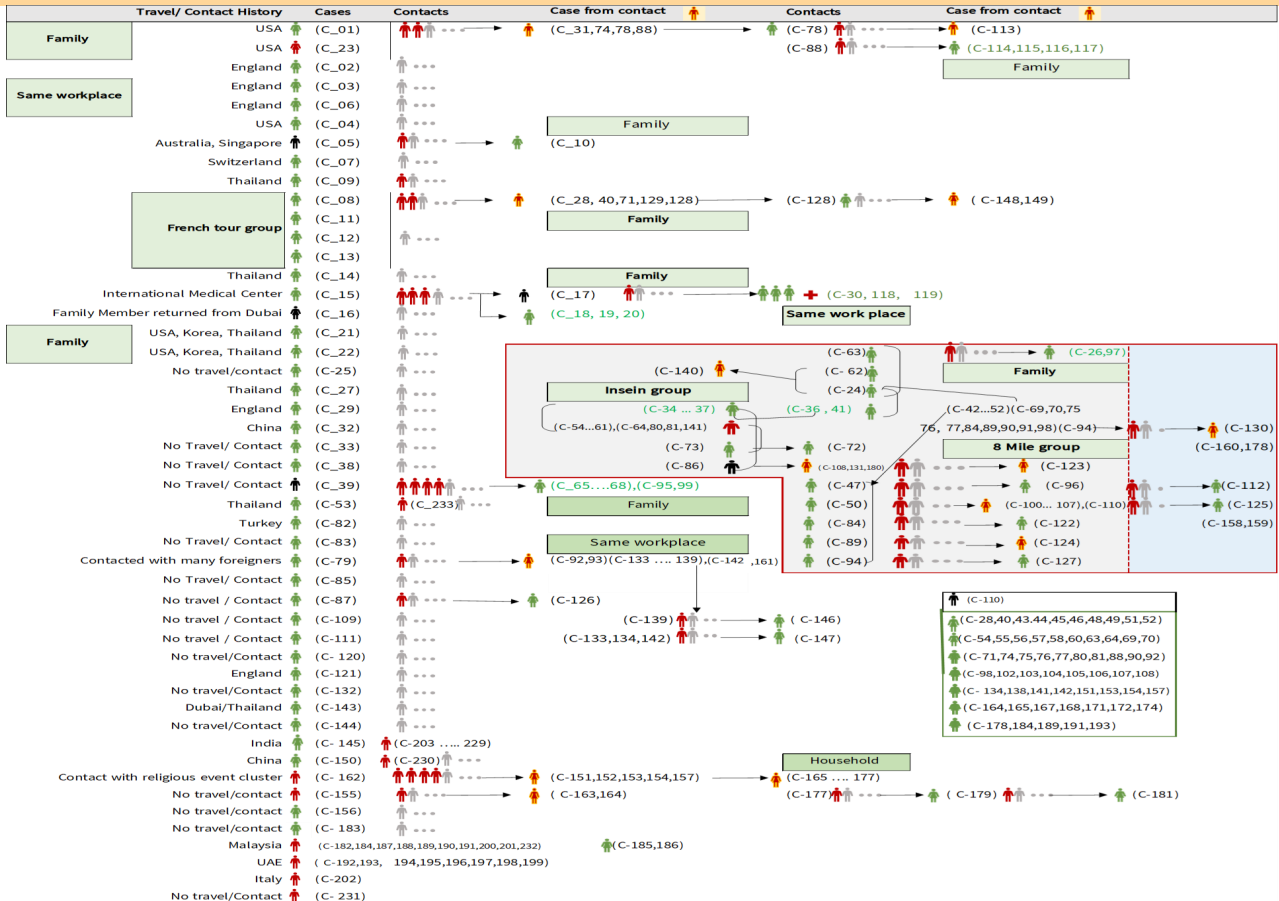
### Total laboratory confirmed cases by date (as of 2.6.2020, 11:30 pm), n= 233



### Cumulative Number of active confirmed cases, recovered and death ( 23.3.2020 – 2-6-2020), n (cumulative)=233



### Summary of COVID-19 confirmed cases (as of 2-6-2020) , n (contacts)= 4,767

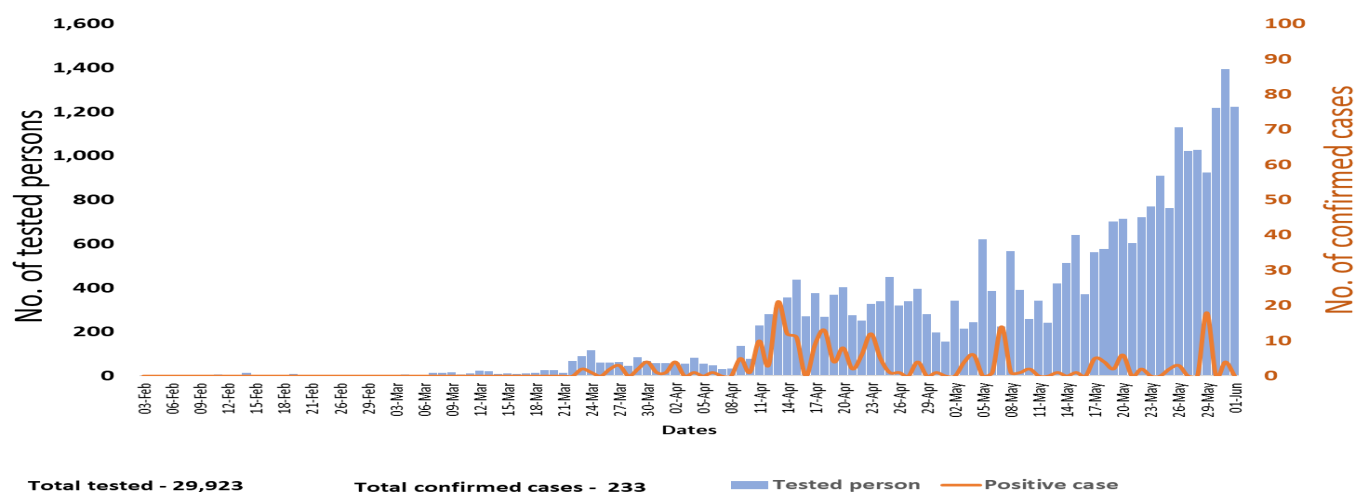


## Summary of current situation

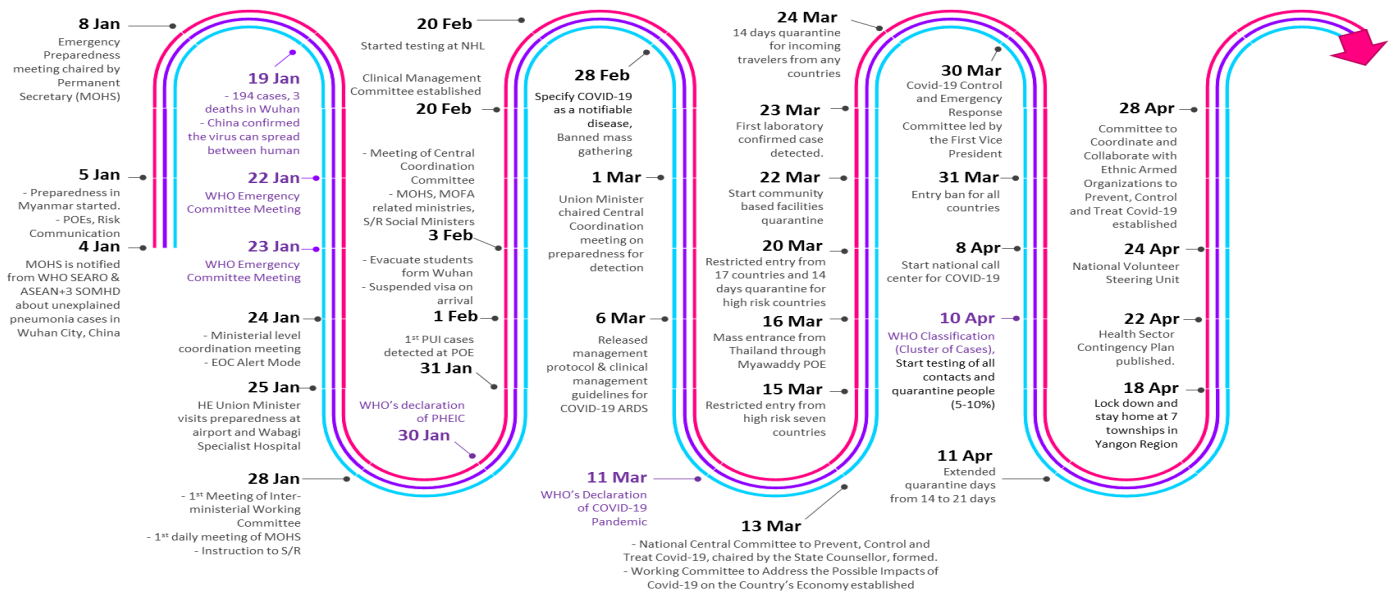
Type	New (1.6.2020-2.6.2020)	Total (on 2.6.2020)
Suspected and Person Under Investigation (PUI)	42	276
Hospital Quarantine	8	114
Facility Quarantine	2,441	49,493

Person under Investigation (PUI) by State/Region hospitals (31.1.2020 – 2.6.2020) n= 5,064			No. of Facility Quarantine sites and Quarantined people on 2.6.2020			
No.	State/Region	PUI	No.	State/Region	No. of facilities	Total no. of quarantine people
1.	Yangon	2,637	1.	Magway	2,866	10,861
2.	Mandalay	906	2.	Kachin	696	5,165
3.	Bago	187	3.	Bago	514	5,049
4.	Kayin	176	4.	Sagaing	1,856	4,909
5.	Shan (N)	171	5.	Mandalay	636	4,355
6.	Tanintharyi	168	6.	Rakhine	684	3,289
7.	Shan (S)	166	7.	Ayeyarwaddy	865	2,864
8.	Mon	105	8.	Yangon	68	2,572
9.	Rakhine	99	9.	Kayin	328	2,264
10.	Shan (E)	88	10.	Shan North	429	2,149
11.	Ayeyarwaddy	74	11.	Mon	23	1,424
12.	Magway	74	12.	Shan S	139	1,388
13.	Sagaing	60	13.	Naypyitaw	19	1,233
14.	Kayah	54	14.	Tanintharyi	189	1,057
15.	Chin	50	15.	Shan East	11	405
16.	Naypyitaw	27	16.	Chin	45	312
17.	Kachin	22	17.	Kayah	18	197
<b>Total</b>		5,064	<b>Total</b>		9,386	49,493

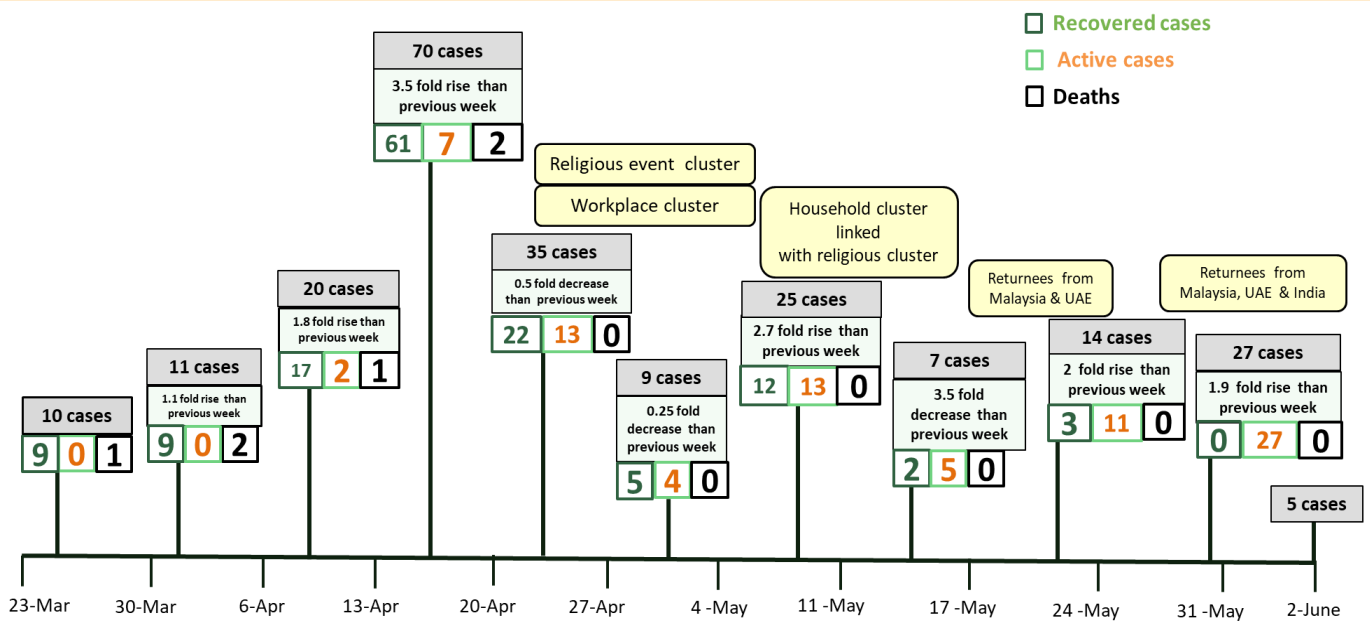
### COVID-19 confirmed cases among tested by date (as of 2.6.2020)



# Timeline of Preparedness and Response to COVID-19 in Myanmar (as of 3.6.2020)



## Summary of new confirmed cases detection after first two cases (as of 2.6.2020)



- Confirmed cases were detected as peak in the 4th week after first confirmed cases due to religious event cluster .
- Confirmed cases were decreased but still raised than the first 3 weeks due to religious event cluster and workplace cluster.
- There was an increased in numbers of cases in the 7th week after the first two cases due to household cluster linked with religious cluster.
- Confirmed cases were detected by nearly two fold rise in the 9th and 10th weeks after first two cases because of returnees coming back by relief flights.