



Ministry of Health and Sports (Myanmar)

Department of Public Health

Central Epidemiology Unit

(16 July 2020)

Situation Report - 100

Coronavirus Disease 2019 (COVID-19)

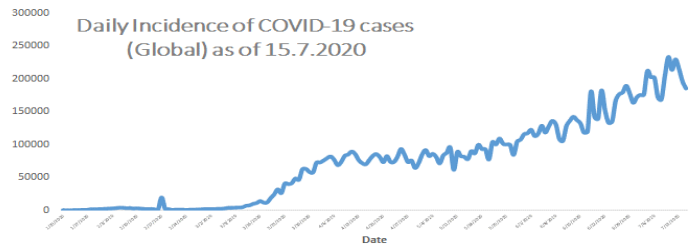
Data as reported by States and Regions by 00:30 AM MST 16 July 2020

Global Situation (WHO situation report - 177) data as of 14:30 MST 15 July 2020

Confirmed cases
13,150,645

Deaths
574,464

Case Fatality Rate
4.3 %



Myanmar Situation

Total Tested

97,651

Confirmed Cases

337

Negative

95,987

Recovered

266

78.9% of Confirmed cases

Active

65

19.2% of Confirmed cases

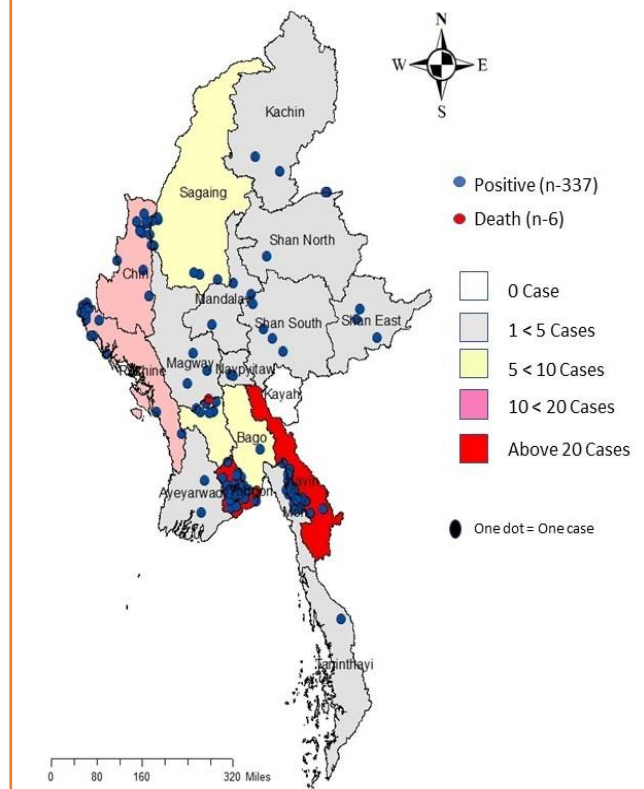
Death

6

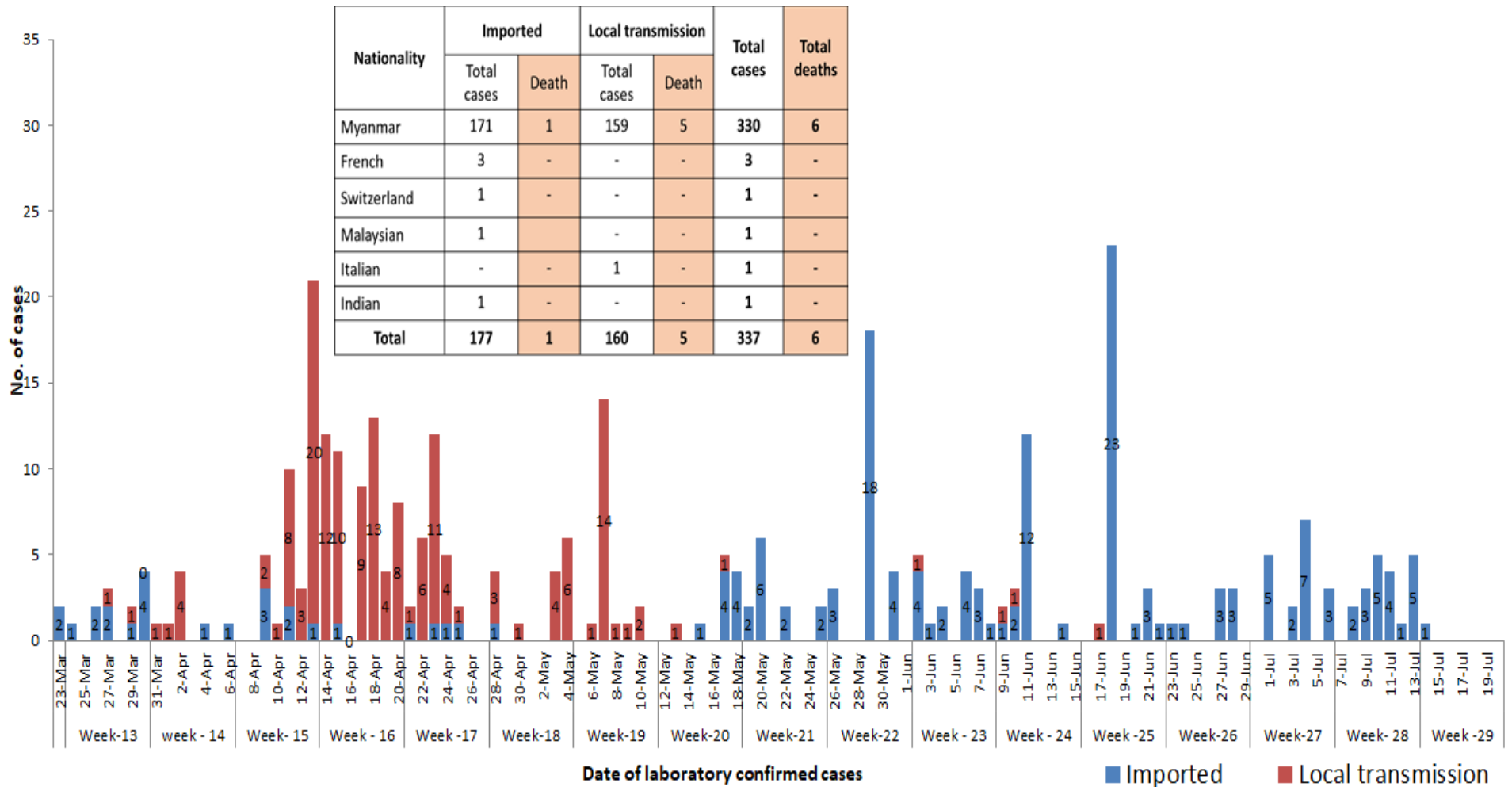
1.7% of Confirmed cases

No	State/Region	COVID –19 Confirmed case	Recovered	Deaths
1	Yangon	243	182	5
2	Kayin	26	23	-
3	Rakhine	14	10	-
4	Chin	11	10	-
5	Sagaing	9	8	-
6	Bago	9	8	1
7	Shan (South)	4	4	-
8	Mandalay	3	3	-
9	Shan (East)	3	3	-
10	Shan (North)	3	3	-
11	Magway	3	3	-
12	Naypyitaw	2	2	-
13	Ayeyarwaddy	2	2	-
14	Kachin	2	2	-
15	Mon	2	2	-
16	Thanintharyi	1	1	-
17	Kayah	-	-	-
Total		337	266	6

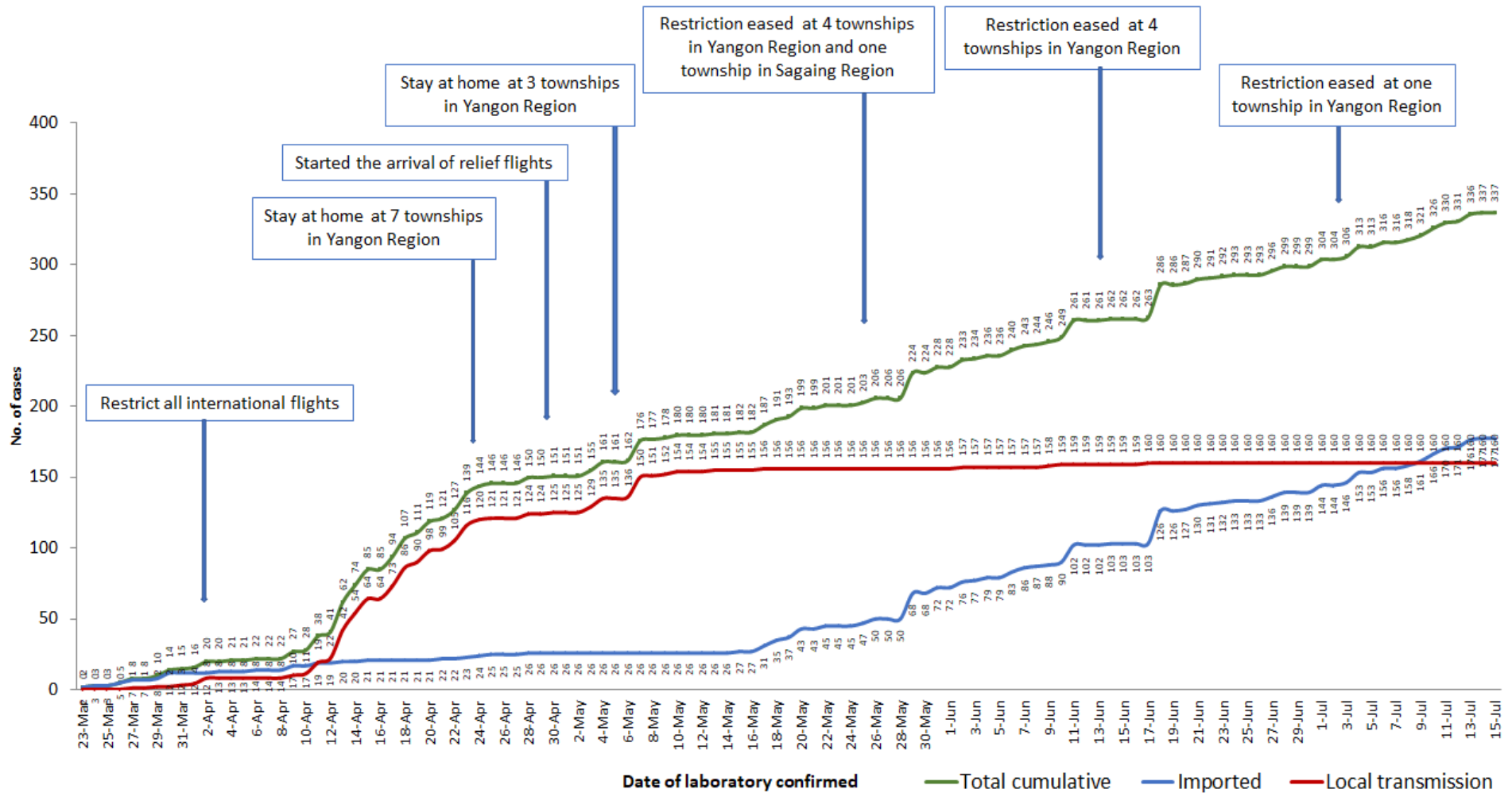
Map showing COVID-19 laboratory confirmed cases



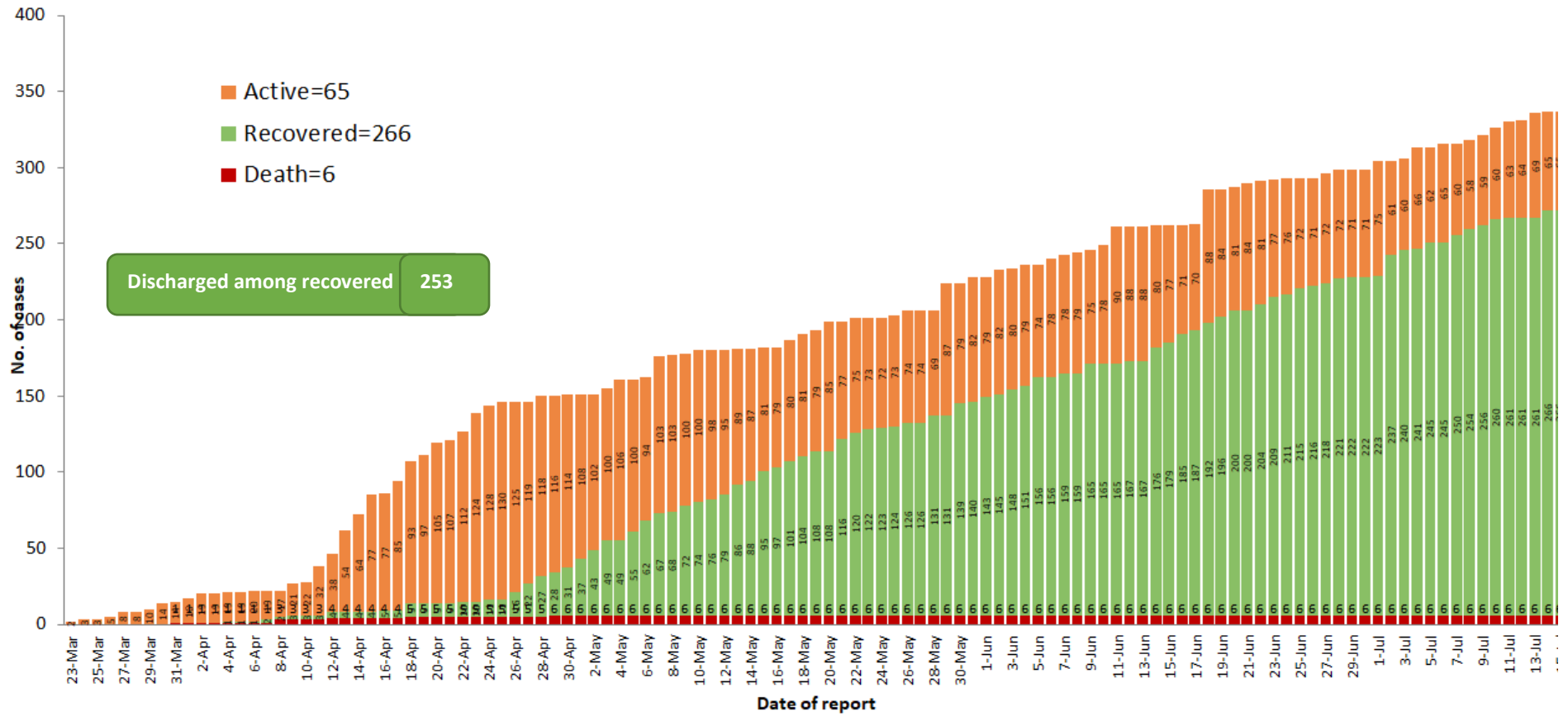
COVID-19 confirmed cases by types of transmissions (as of 16.7.2020, 00:30 am) n=337



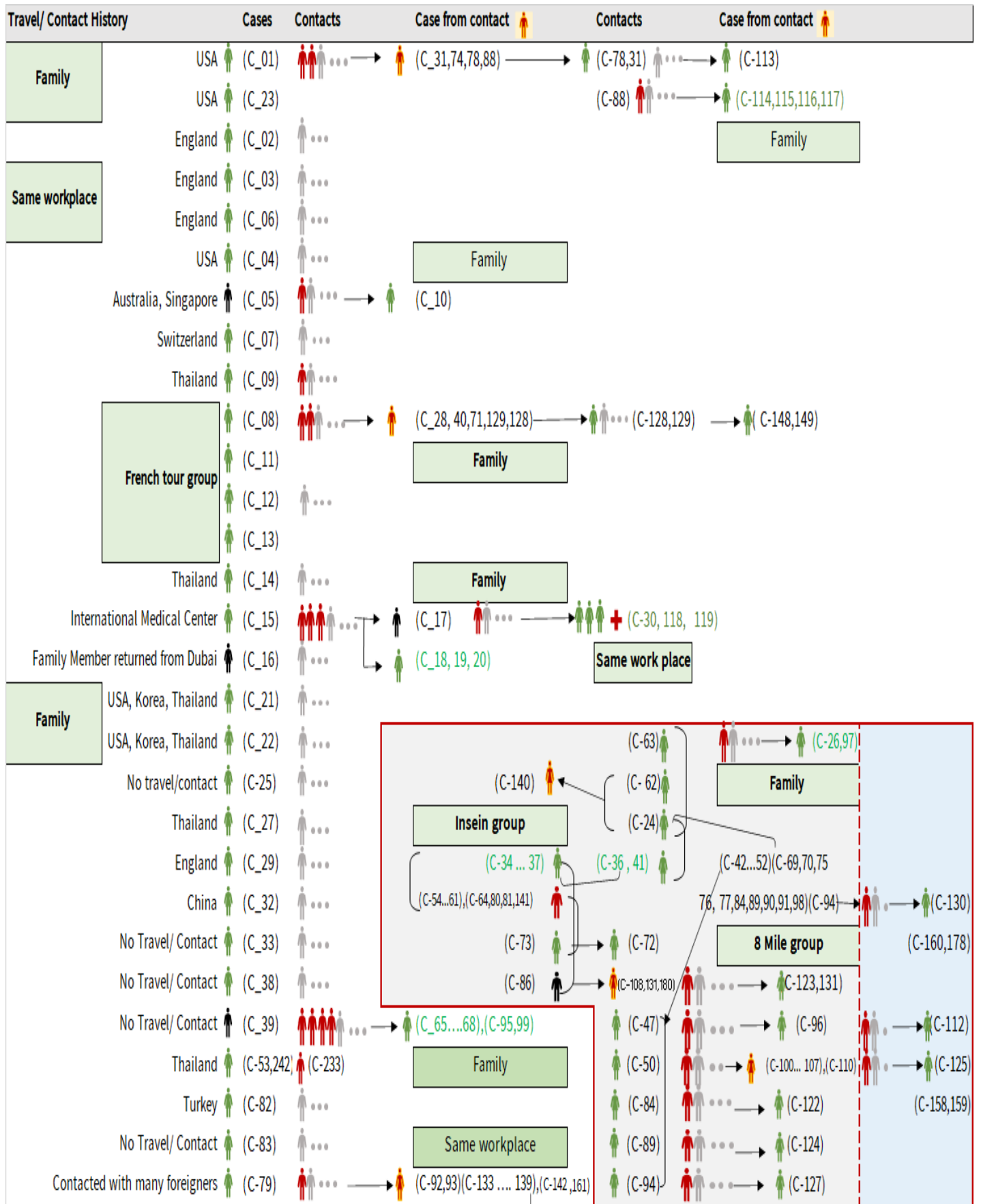
Total laboratory confirmed cases by date (as of 16.7.2020, 00:30 am), n= 337



Cumulative Number of active confirmed cases, recovered and deaths (23.3.2020 – 15.7.2020), n (cumulative)=337



Summary of COVID-19 confirmed cases (as of 15.7.2020), n (contacts)= 5,718



Summary of COVID-19 confirmed cases (as of 15.7.2020), n (contacts)= 5,718

Travel/ Contact History	Cases	Contacts	Case from contact	Contacts	Case from contact
No Travel/ Contact	(C-85)	...			(C-110)
No travel / Contact	(C-87)	... → (C-126)			(C-28,40,42,43,44,45,46,48,49,51,52)
No travel / Contact	(C-109)	...	(C-139) ... → (C-146)		(C-54,55,56,57,58,60,61,63,64,69,70)
No travel / Contact	(C-111)	...	(C-133,134,142) ... → (C-147)		(C-71,74,75,76,77,80,81,88,90,91,92,93)
No travel/Contact	(C- 120)	...			(C-98,100,101,102,103,104,105,106,107,108)
England	(C-303,317,327) (C-121,302)				(C- 133,134,135,136,137,138,139,140,141,142)
No travel/Contact	(C-132)	...			(C-151,152,153,154,157,158,159,160,161)
Dubai/Thailand	(C-143)	...			(C-164,165,167,168,170,171,172,174)
No travel/Contact	(C-144)	...			(C-178,184,189,191,193,205,207,216,217,218)
India	(C- 145,209,210,213,221,223,224,229,225,227,228,252,255,259,296,299)				(C-226,233,234,235,237,246,253,258)
China	(C-150,230)				
Contact with religious event cluster	(C- 162)	... → (C-151,152,153,154,157) → (C-165 177) (C-166,169,173,175,176,177)			
No travel/contact	(C-155)	... → (C-163,164) (163)		(C-177) ... → (C-179) ... → (C-181)	
No travel/contact	(C-156)	...			
No travel/contact	(C- 183)	...			
Malaysia	(C-184,189,273,280) (C-182,185,186,191,188,190,187,200,201,232,275,282)				
UAE	(C-300,301,314,315,316,337) (C-193,192,194,195,196,197,198,199,301)				
Italy	(C-243,202)				
No travel/Contact	(C- 231)				
Bangladesh	(C-234,244,247,250,262,293,308,309,310,325,326,334) (C-244,245,247,248,250,262,291,292)				
No travel/contact	(C-245) ...				
No travel/contact	(C-249)				
No travel/contact	(C-263) ...				
Thailand	(C-269,279,280,312,332,333,335,336) (C-264,265,266,267,268,270,271,272,273,274,276,277,278,281,283,284,285,286,287,294,304)				
Quata	(C-288) (C-289,290)				
India	(C-203... 229,235...240,241,246,251,253,254...258,260,261,295,297,298,305,306,307,318,322,323,324,328,329,330)				
Lao	(C-311) ...				
Singapore	(C-313) ...				
Philippines	(C-319,320,321) ...				
USA	(C-331) ...				

Household

Summary of current situation

Type	New (14.7.2020-15.7.2020)	Total (on 15.7.2020)
Suspected and Person Under Investigation (PUI)	29	192
Hospital Quarantine	11	61
Facility Quarantine	1,005	23,271

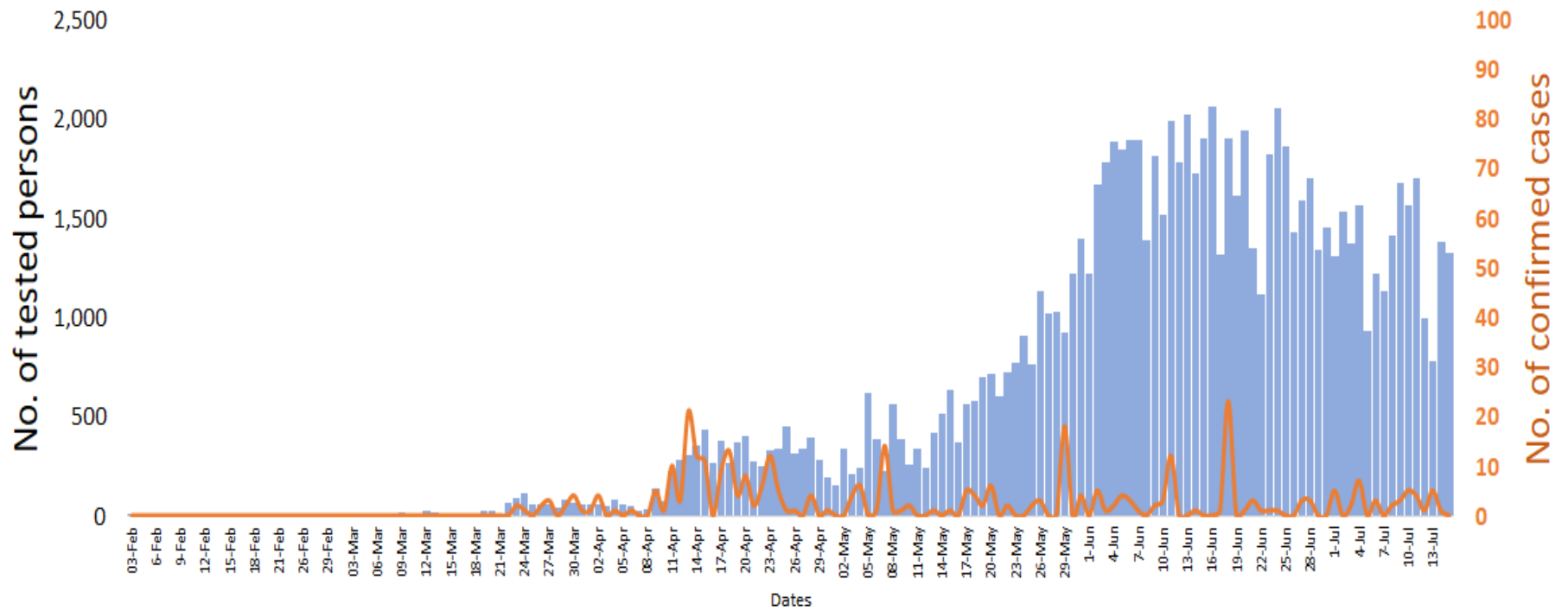
Person under Investigation (PUI) by State/Region hospitals (31.1.2020 – 15.7.2020) n= 6,429

No.	State/Region	PUI
1	Yangon	3,258
2	Mandalay	1,289
3	Kayin	264
4	Mon	254
5	Shan (N)	218
6	Magway	210
7	Bago	180
8	Shan (E)	121
9	Ayeyarwaddy	102
10	Shan (S)	99
11	Sagaing	90
12	Kayah	80
13	Thanintharyi	70
14	Rakhine	68
15	Naypyitaw	63
16	Kachin	36
17	Chin	27
Total		6,429

No. of Facility Quarantine sites and Quarantined people on 15.7.2020

No.	State/Region	No. of facilities	Total no. of quarantine
1	Yangon	64	3,964
2	Bago	259	3,187
3	Kayin	302	2,791
4	Mon	279	2,679
5	Magway	50	2,080
6	Tanintharyi	189	1,498
7	Mandalay	103	1,239
8	Sagaing	207	1,229
9	Shan South	116	953
10	Rakhine	262	923
11	Kachin	419	894
12	Ayeyarwaddy	166	815
13	Naypyitaw	3	466
14	Shan North	322	174
15	Chin	15	158
16	Kayah	18	120
17	Shan East	11	101
Total		2,785	23,271

COVID-19 confirmed cases among tested by date (as of 15.7.2020)



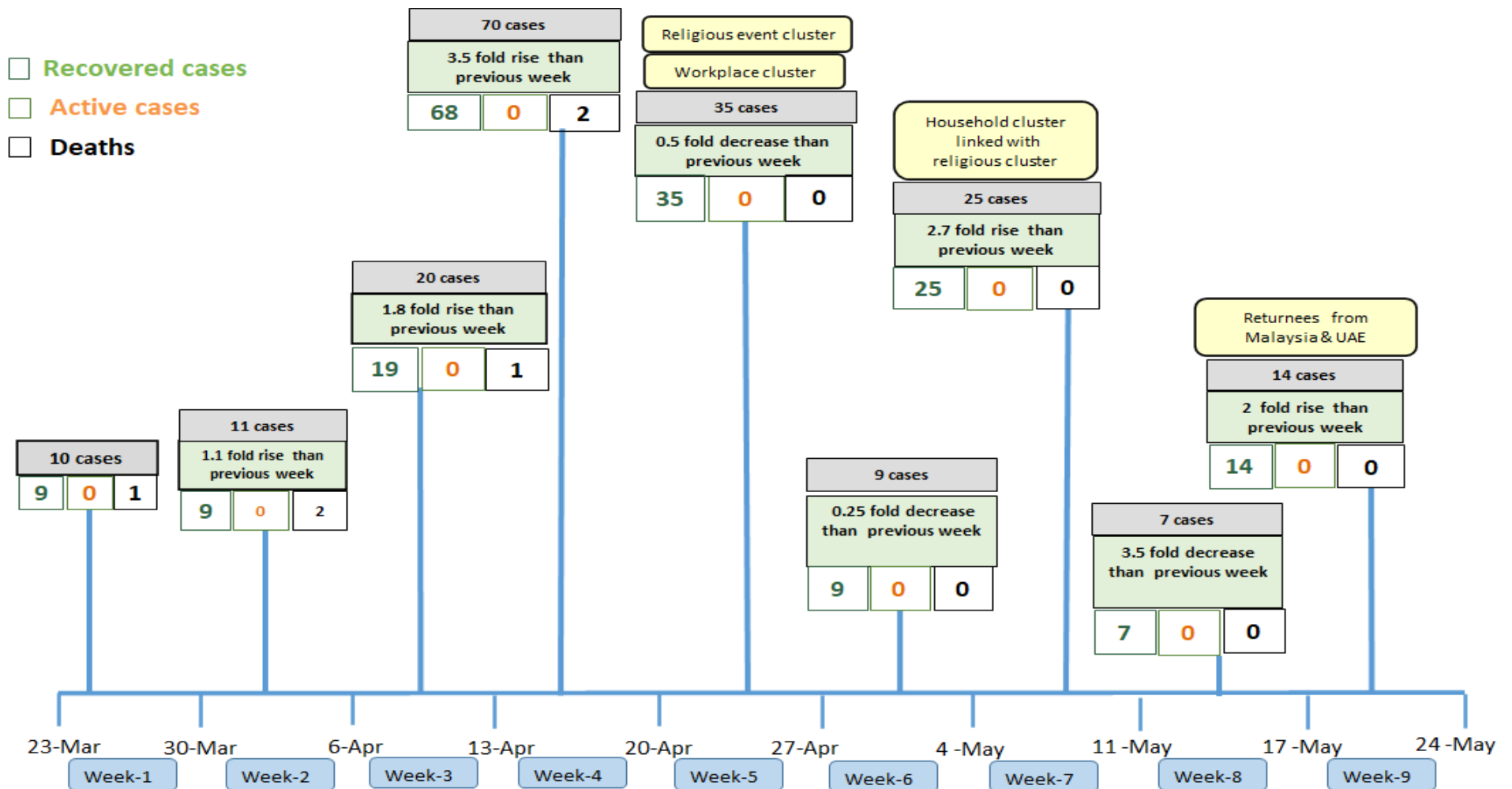
Total tested persons - 97,651

Total confirmed cases - 337

Tested person

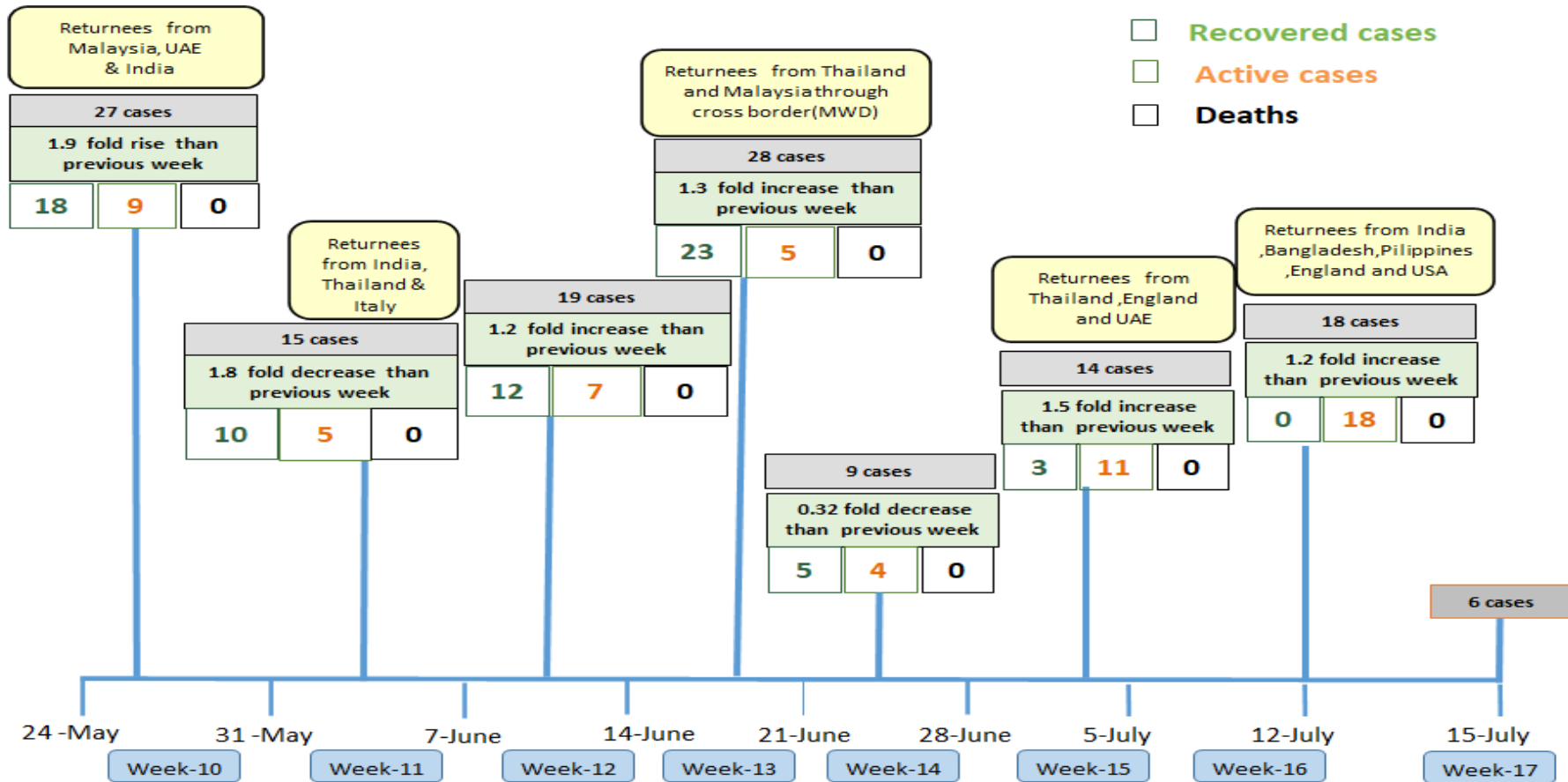
Confirmed case

Summary of new confirmed cases detection after first two cases (as of 14.7.2020)



- Confirmed cases were detected as a peak in the 4th week after first confirmed cases due to the religious event cluster.
- Confirmed cases were decreased but still raised than the first 3 weeks due to the religious event cluster and workplace cluster.
- There were an increased in numbers of cases in the 7th week after the first two cases due to the household cluster linked with a religious cluster.
- Confirmed cases were detected by a nearly two-fold rise in the 9th and 10th weeks after the first two cases because of returnees coming back by relief flights.

Summary of new confirmed cases detection after first two cases (as of 15.7.2020)



- Confirmed cases were detected as a peak in the 4th week after first confirmed cases due to the religious event cluster.
- Confirmed cases were decreased but still raised than the first 3 weeks due to the religious event cluster and workplace cluster.
- There were an increased in numbers of cases in the 7th week after the first two cases due to the household cluster linked with a religious cluster.
- Confirmed cases were detected by a nearly two-fold rise in the 9th and 10th weeks after the first two cases because of returnees coming back by relief flights.

Timeline of Preparedness and Response to COVID-19 in Myanmar (as of 15.7.2020)

