



# Ministry of Health and Sports (Myanmar)

## Department of Public Health

### Central Epidemiology Unit

(7 October 2020)

#### Coronavirus Disease 2019 (COVID-19)

Situation Report - 183

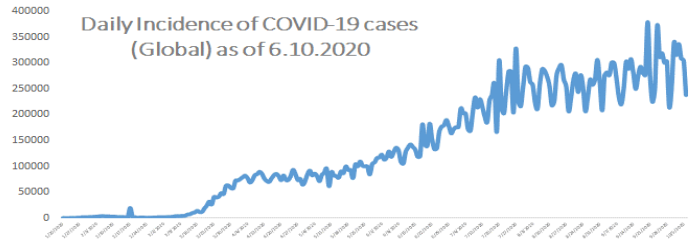
Data as reported by States and Regions by 6 October 2020

WHO Coronavirus Disease (COVID-19) Dashboard data as of 3:07 PM CEST 6 October 2020

**Confirmed cases**  
**35,347,404**

**Deaths**  
**1039,406**

**Case Fatality Rate**  
**2.9%**



#### Myanmar Situation

**Total Tested**  
**306,443**

**Confirmed Cases**  
**20,033**

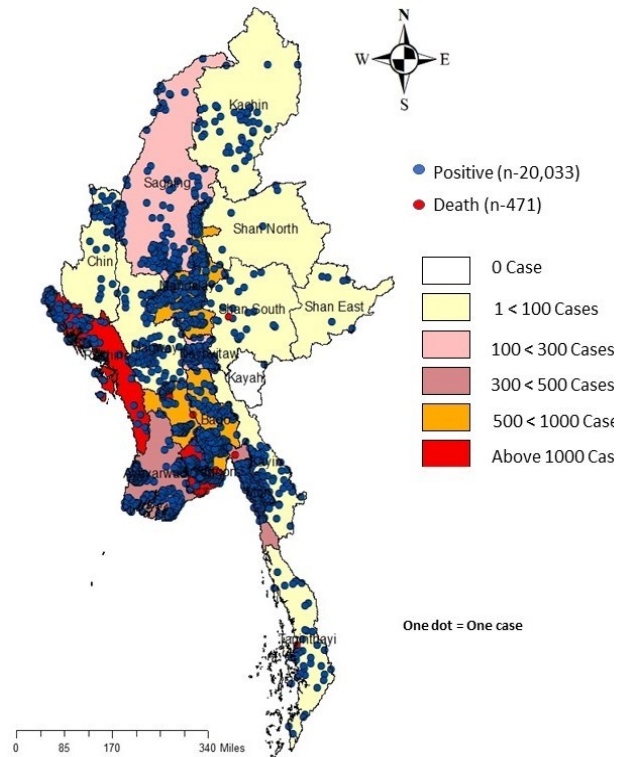
**Negative**  
**286,410**

**Discharged**  
**5,782**  
28.9% of Confirmed cases

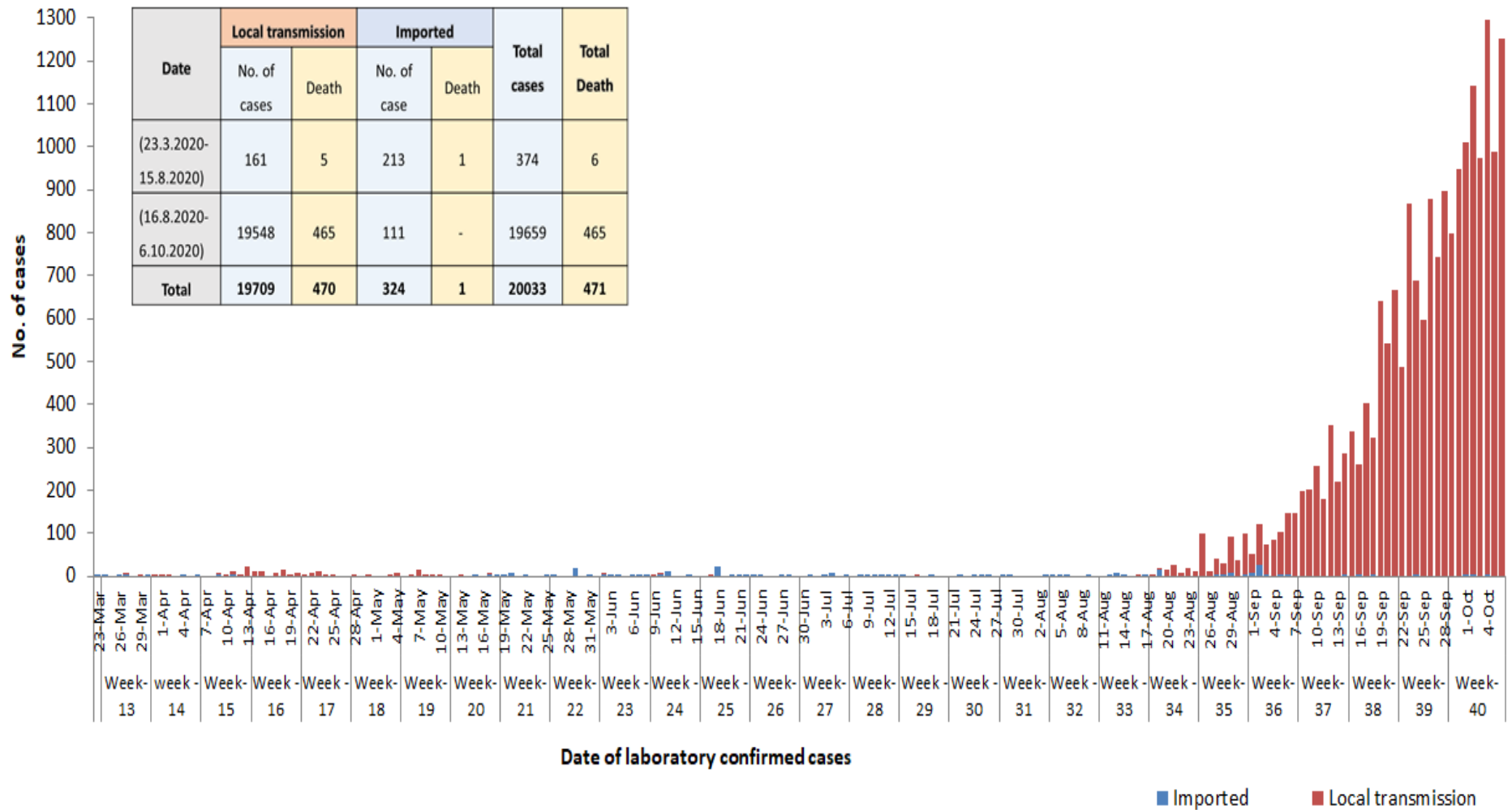
**Death**  
**471**  
2.4% of Confirmed cases

No	State/Region	COVID-19 Confirmed case	New confirmed cases within 24 hours	Deaths
1	Yangon	15,753	1,095	445
2	Rakhine	1,846	17	6
3	Bago	542	73	3
4	Mandalay	528	29	2
5	Ayeyarwaddy	409	6	2
6	Mon	317	10	7
7	Naypyitaw	171	12	3
8	Sagaing	124	-	-
9	Thanintharyi	83	-	1
10	Magway	78	6	-
11	Kachin	52	1	-
12	Kayin	49	-	1
13	Chin	39	-	-
14	Shan (South)	31	3	1
15	Shan (East)	6	-	-
16	Shan (North)	5	-	-
17	Kayah	-	-	-
<b>Total</b>		<b>20,033</b>	<b>1,252</b>	<b>471</b>

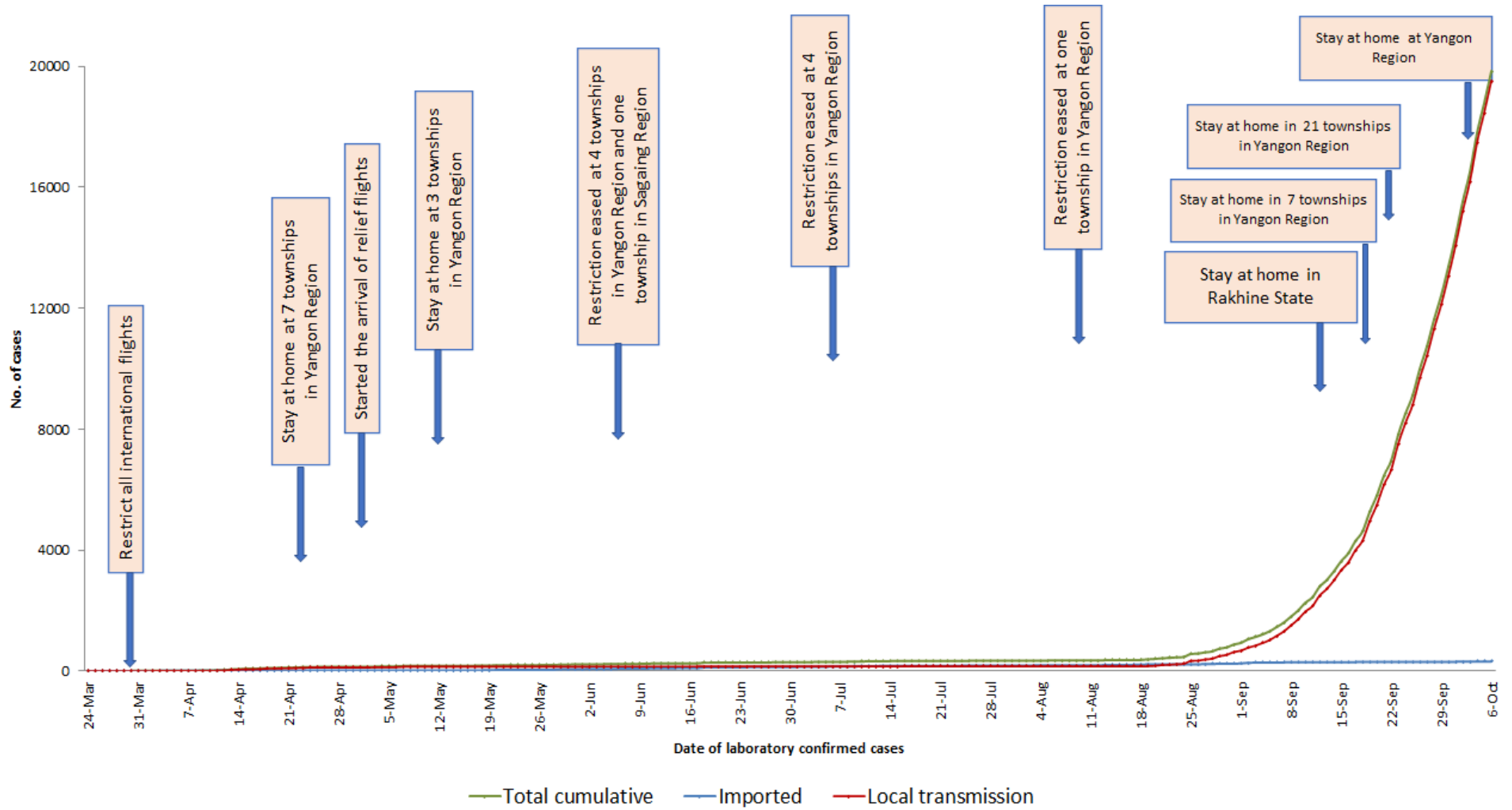
Map showing COVID-19 laboratory confirmed cases



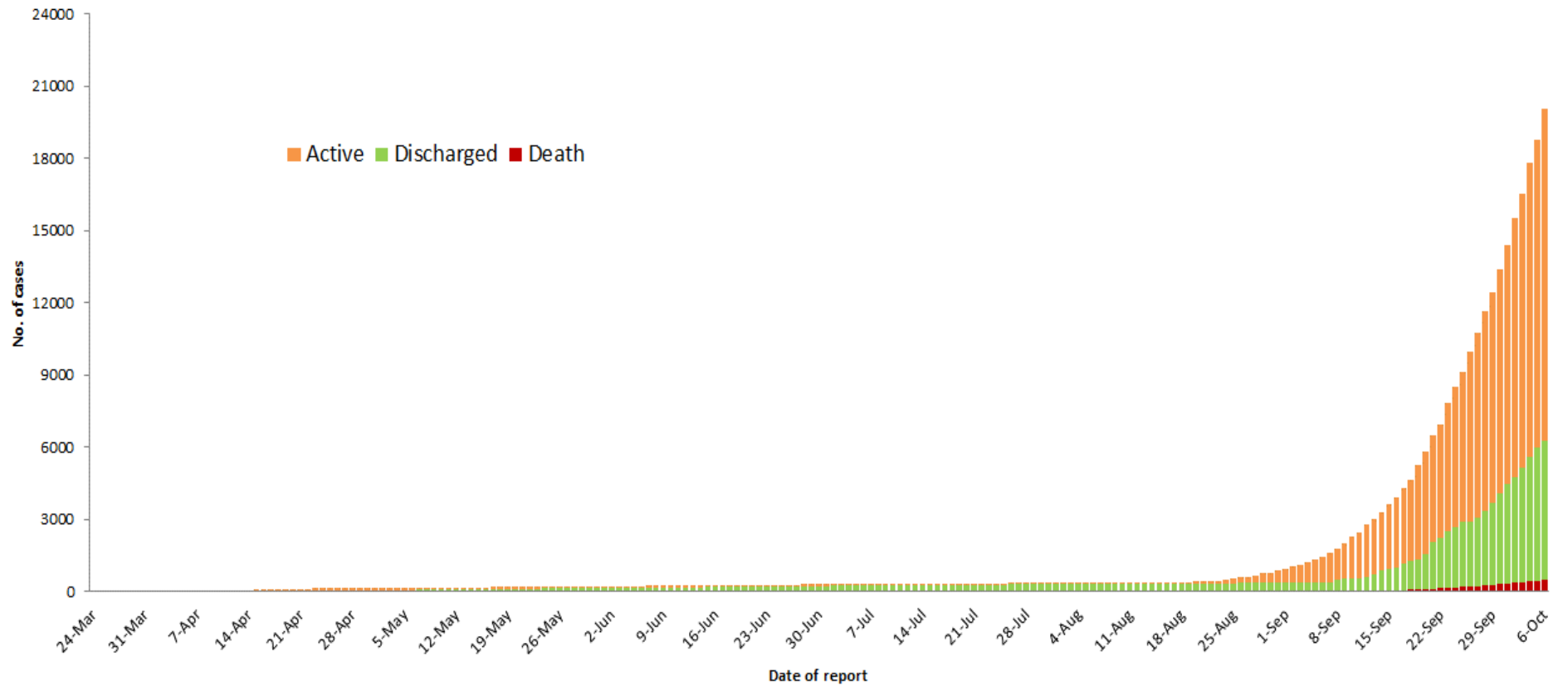
## COVID-19 confirmed cases by types of transmissions (as of 6.10.2020) n=20,033



# Total laboratory confirmed cases by date (as of 6.10.2020), n= 20,033



**Cumulative Number of active confirmed cases, recovered and deaths (23.3.2020 – 6.10.2020), n (cumulative)=20,033**



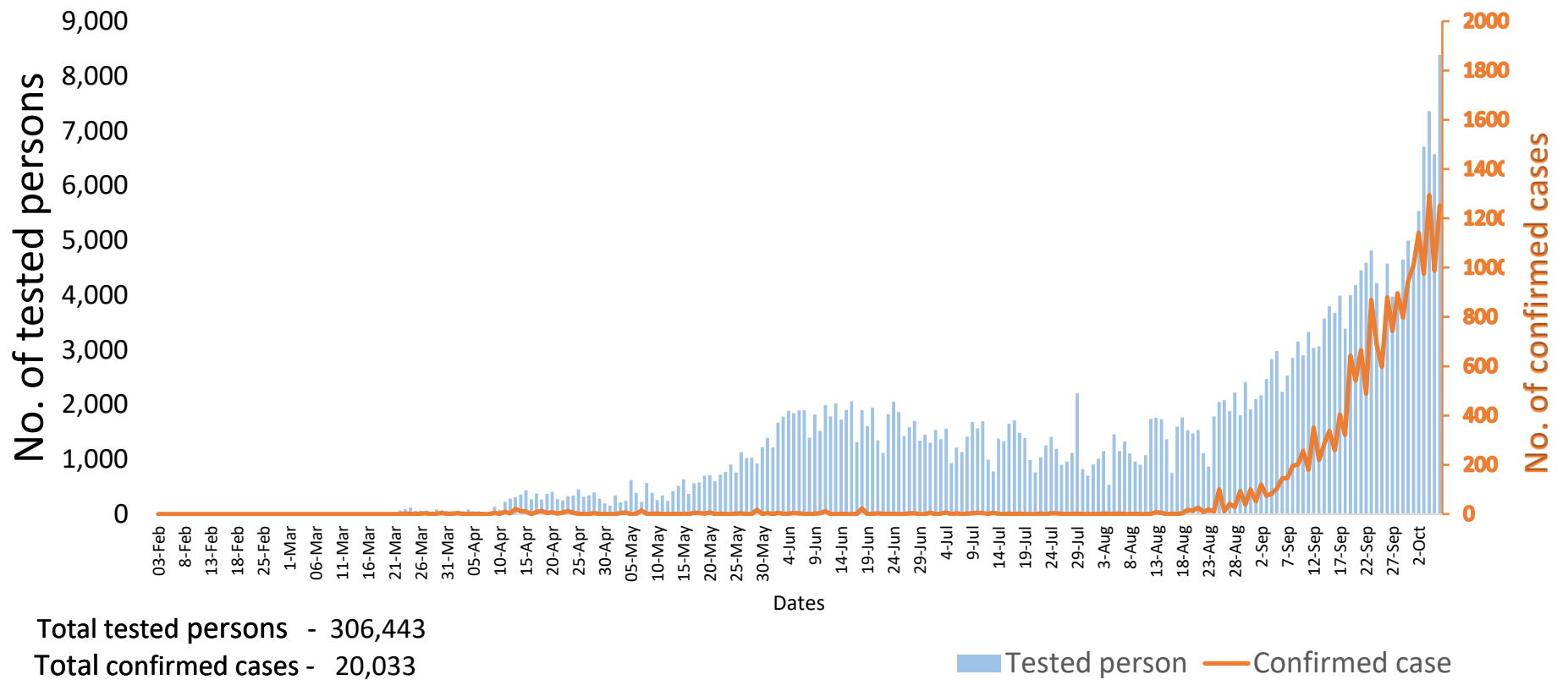
Summary of current situation		
Type	New (5.10.2020-6.10.2020)	Total (on 6.10.2020)
Suspected and Person Under Investigation (PUI)	590	1,886
Hospital Quarantine	28	423
Facility Quarantine	3,139	43,626

Person under Investigation (PUI) by State/Region hospitals (31.1.2020 – 6.10.2020) n= 19,114	No. of Facility Quarantine sites and Quarantined people on 6.10.2020
--	--

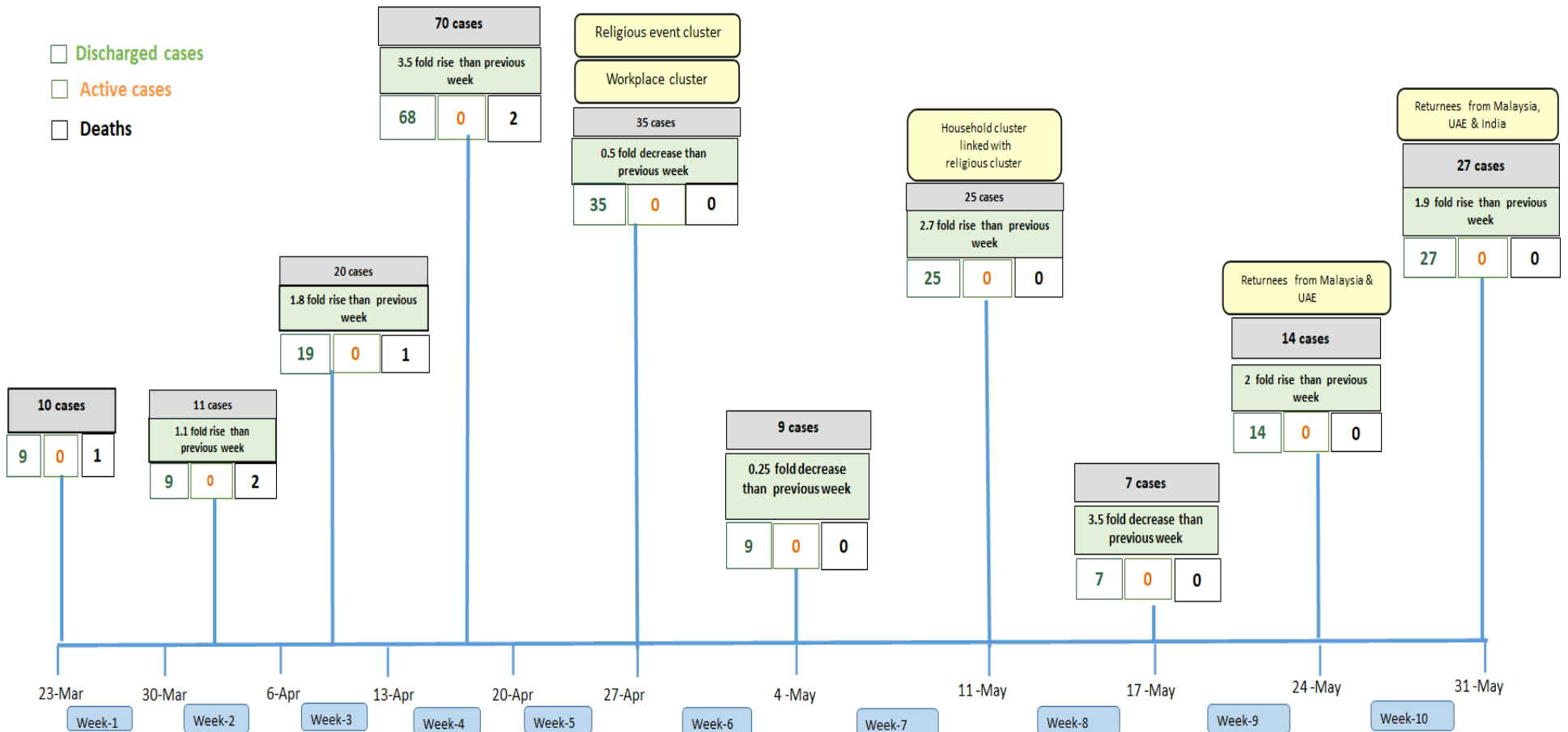
No.	State/Region	PUI	No.	State/Region	No. of facilities	Total no. of quarantine
1	Yangon	12405	1	Bago	1,038	7,629
2	Mandalay	2627	2	Ayeyarwaddy	1,143	5,894
3	Mon	742	3	Yangon	86	4,492
4	Kayin	491	4	Magway	603	4,347
5	Magway	425	5	Sagaing	665	4,338
6	Rakhine	412	6	Kachin	290	3,493
7	Bago	362	7	Mandalay	384	2,985
8	Ayeyarwaddy	358	8	Mon	85	1,980
9	Shan (N)	350	9	Kayin	305	1,847
10	Thanintharyi	155	10	Rakhine	281	1,445
11	Shan (S)	151	11	Shan South	122	1,440
12	Shan (E)	148	12	Shan North	398	1,046
13	Sagaing	140	13	Tanintharyi	153	1,021
14	Naypyitaw	112	14	Naypyitaw	11	781
15	Kachin	93	15	Chin	30	374
16	Kayah	87	16	Kayah	12	291
17	Chin	56	17	Shan East	19	223
<b>Total</b>		19,114	<b>Total</b>		5,625	43,626

\*Facility quarantine rule changed from 21 days to 14 days on 11-9-2020 while 7 days home quarantine rule remain unchanged.

## COVID-19 confirmed cases among tested by date (as of 6.10.2020)

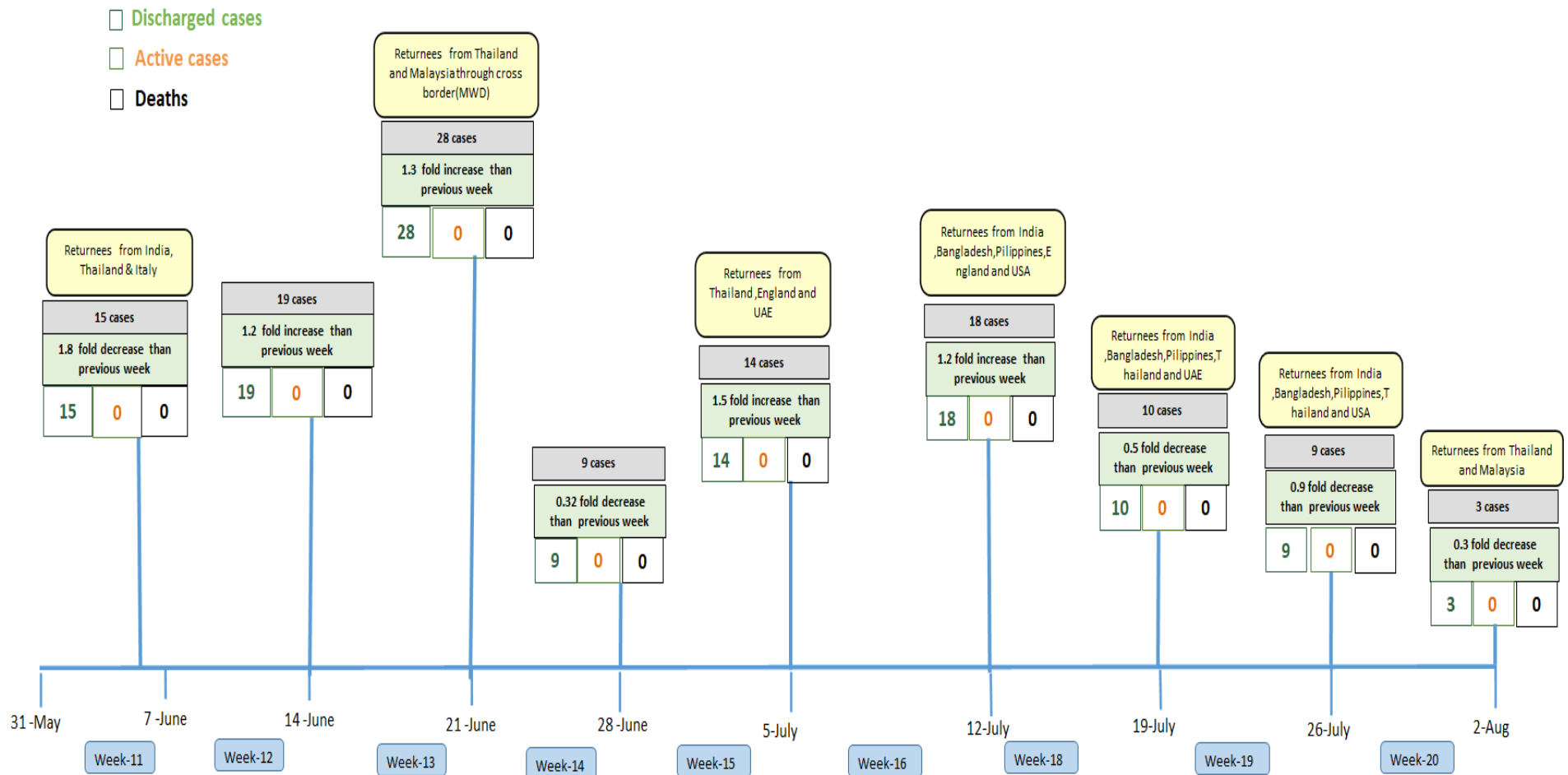


# Summary of new confirmed cases detection after first two cases (as of 6.10.2020)



- Confirmed cases were detected as a peak in the 4th week after first confirmed cases due to the religious event cluster.
- Confirmed cases were decreased but still raised than the first 3 weeks due to the religious event cluster and workplace cluster.
- There were an increased in numbers of cases in the 7th week after the first two cases due to the household cluster linked with a religious cluster.
- Confirmed cases were detected by a nearly two-fold rise in the 9th and 10th weeks after the first two cases because of returnees coming back by relief flights.

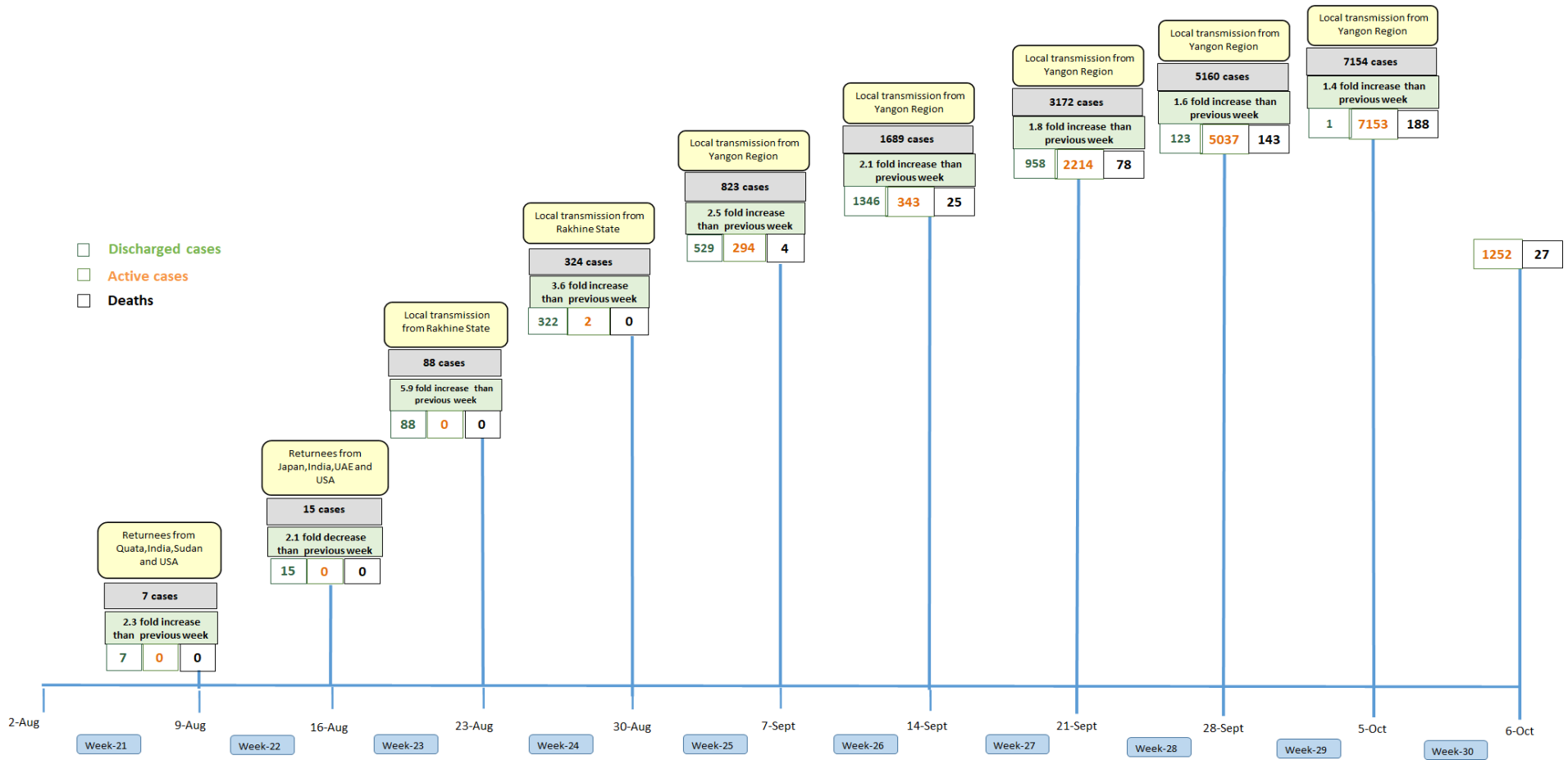
# Summary of new confirmed cases detection after first two cases (as of 6.10.2020)



- Confirmed cases were detected as a peak in the 4th week after first confirmed cases due to the religious event cluster.
- Confirmed cases were decreased but still raised than the first 3 weeks due to the religious event cluster and workplace cluster.
- There were an increased in numbers of cases in the 7th week after the first two cases due to the household cluster linked with a religious cluster.
- Confirmed cases were detected by a nearly two-fold rise in the 9th and 10th weeks after the first two cases because of returnees coming back by relief flights.

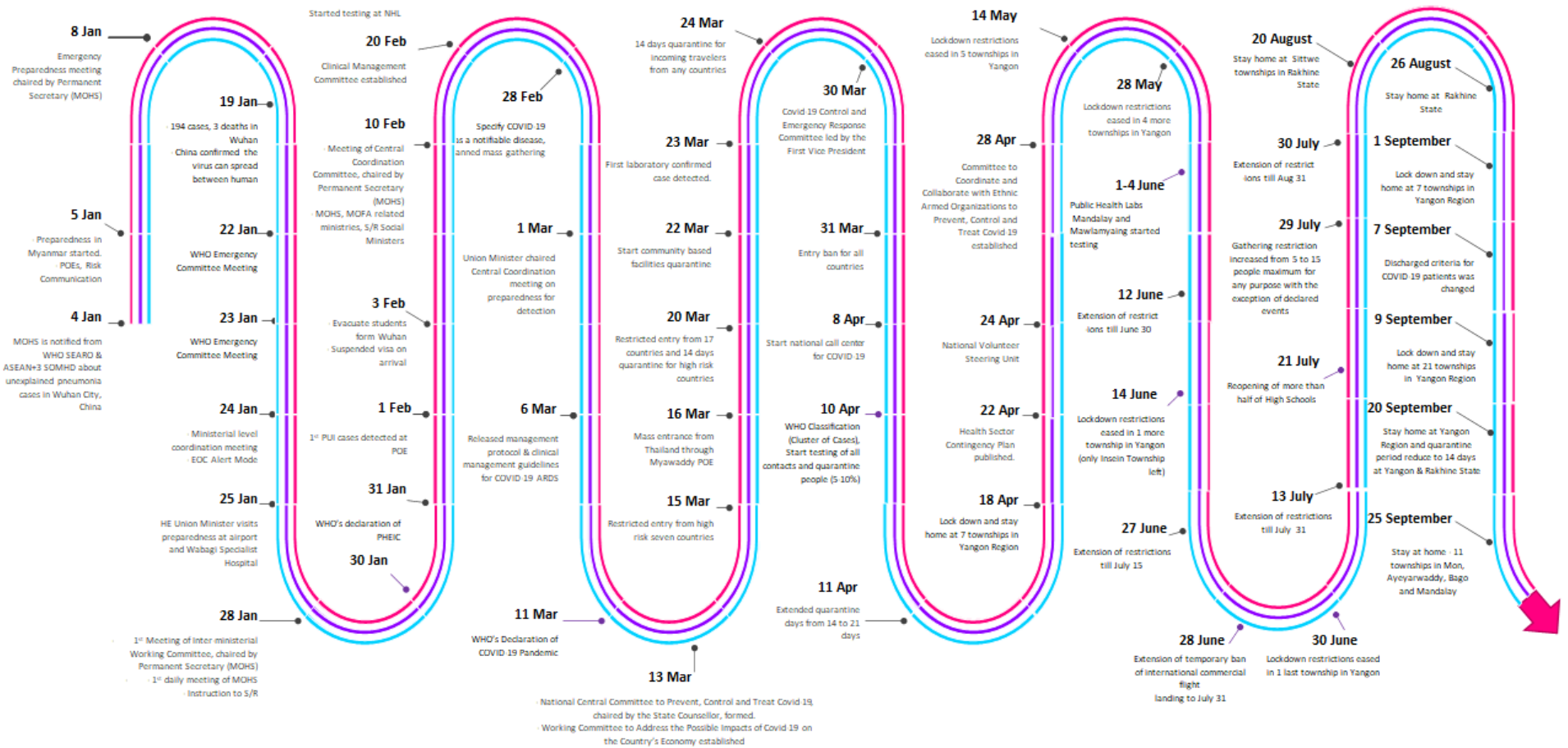


# Summary of new confirmed cases detection after first two cases (as of 6.10.2020)



- Confirmed cases were detected as a peak in the 4th week after first confirmed cases due to the religious event cluster.
- Confirmed cases were decreased but still raised than the first 3 weeks due to the religious event cluster and workplace cluster.
- There were an increased in numbers of cases in the 7th week after the first two cases due to the household cluster linked with a religious cluster.
- Confirmed cases were detected by a nearly two-fold rise in the 9th and 10th weeks after the first two cases because of returnees coming back by relief flights.

# Timeline of Preparedness and Response to COVID-19 in Myanmar (as of 6.10.2020)



Hotline Number— 0673 420 268

Data source - CEU, DMS, NHL, PHL (MDY and MLM), DMR, DSGH, State and Region Health Departments