



# Ministry of Health and Sports (Myanmar)

## Department of Public Health

### Central Epidemiology Unit

( 15 June 2020 )

#### Coronavirus Disease 2019 (COVID-19)

Situation Report - 69

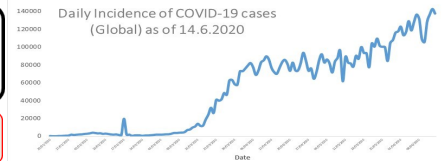
Data as reported by States and Regions by 11:30 PM MST 14 June 2020

**Global Situation**  
(WHO situation report - 146)  
data as of 14:30 MST 14 June 2020

**Confirmed cases**  
**7,690,708**

**Deaths**  
**427,630**

**Case Fatality Rate**  
**5.5 %**



#### Myanmar Situation

**Total tested**  
**51,451**

**Confirmed cases**  
**262**

**Negative**  
**51,189**

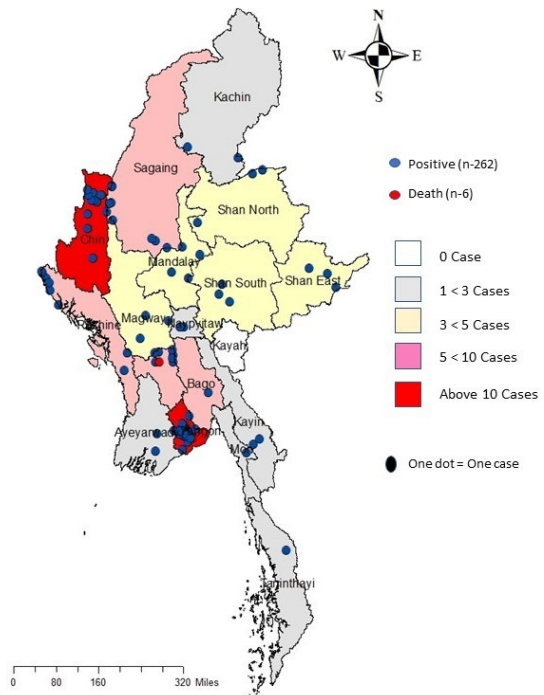
**Recovered**  
**175**  
66.7 % of confirmed cases

**Active**  
**81**  
30.9% of confirmed cases

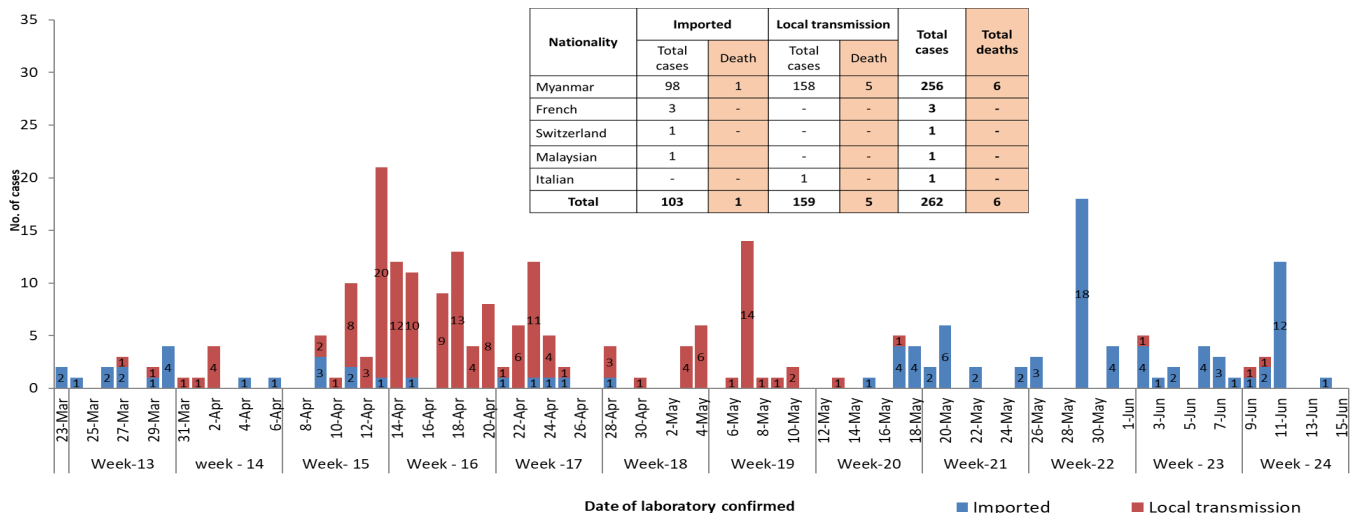
**Death**  
**6**  
2.2% of confirmed cases

No.	State/Region	COVID -19 Confirmed case	Recovered	Deaths
1.	Yangon	201	137(8 New)	5
2.	Chin	10	5	-
3.	Sagaing	9	7	-
4.	Bago	8	6	1
5.	Rakhine	8 (1 New)	-	-
6.	Shan(South)	4	2	-
7.	Mandalay	3	3	-
8.	Shan(East)	3	3	-
9.	Shan(North)	3	2	-
10.	Magway	3	2	-
11.	Naypyitaw	2	2	-
12.	Kayin	2	1	-
13.	Ayeyarwaddy	2	2	-
14.	Kachin	2	1	-
15.	Mon	1	1	-
16.	Thanintharyi	1	1	-
17.	Kayah	-	-	-
<b>Total</b>		<b>262(1 New)</b>	<b>175(8 New)</b>	<b>6</b>

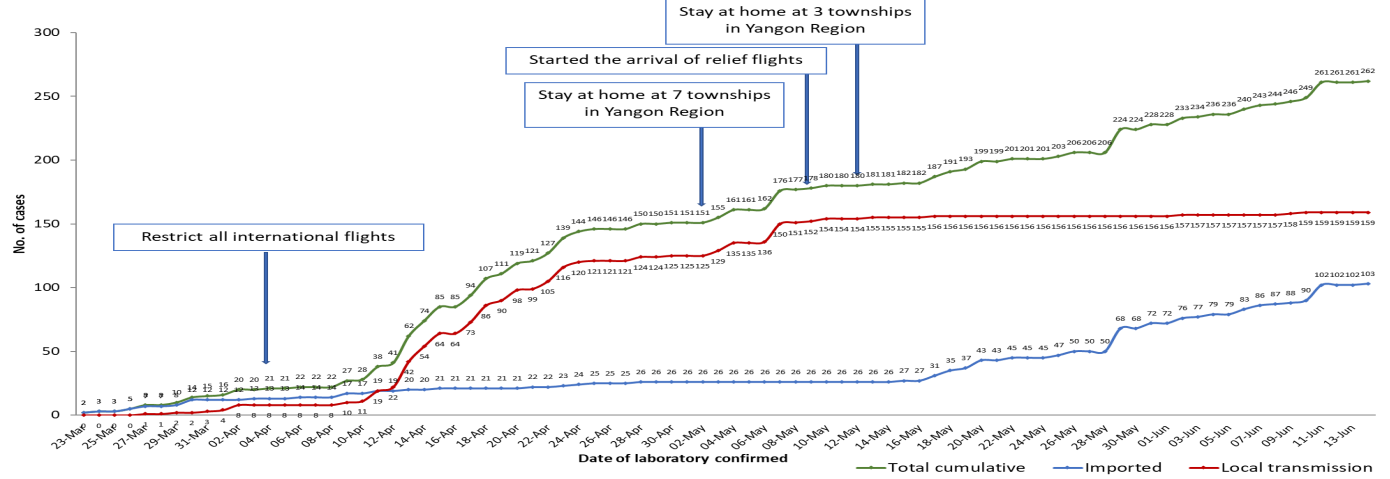
Map showing COVID-19 laboratory confirmed cases



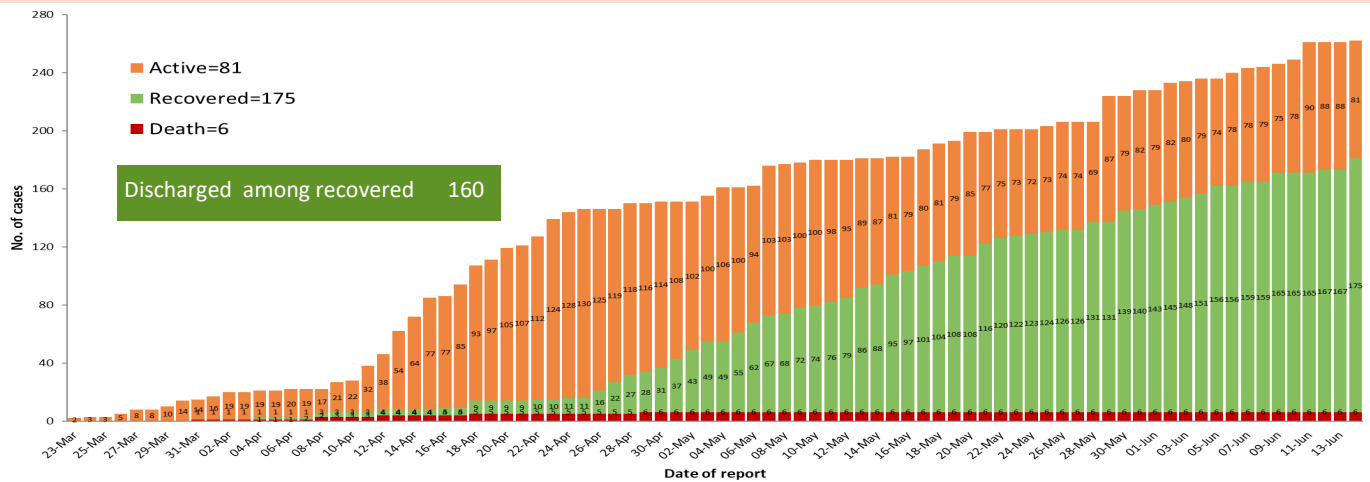
COVID-19 confirmed cases by types of transmissions (as of 14-6-2020, 11:30 pm) n=262



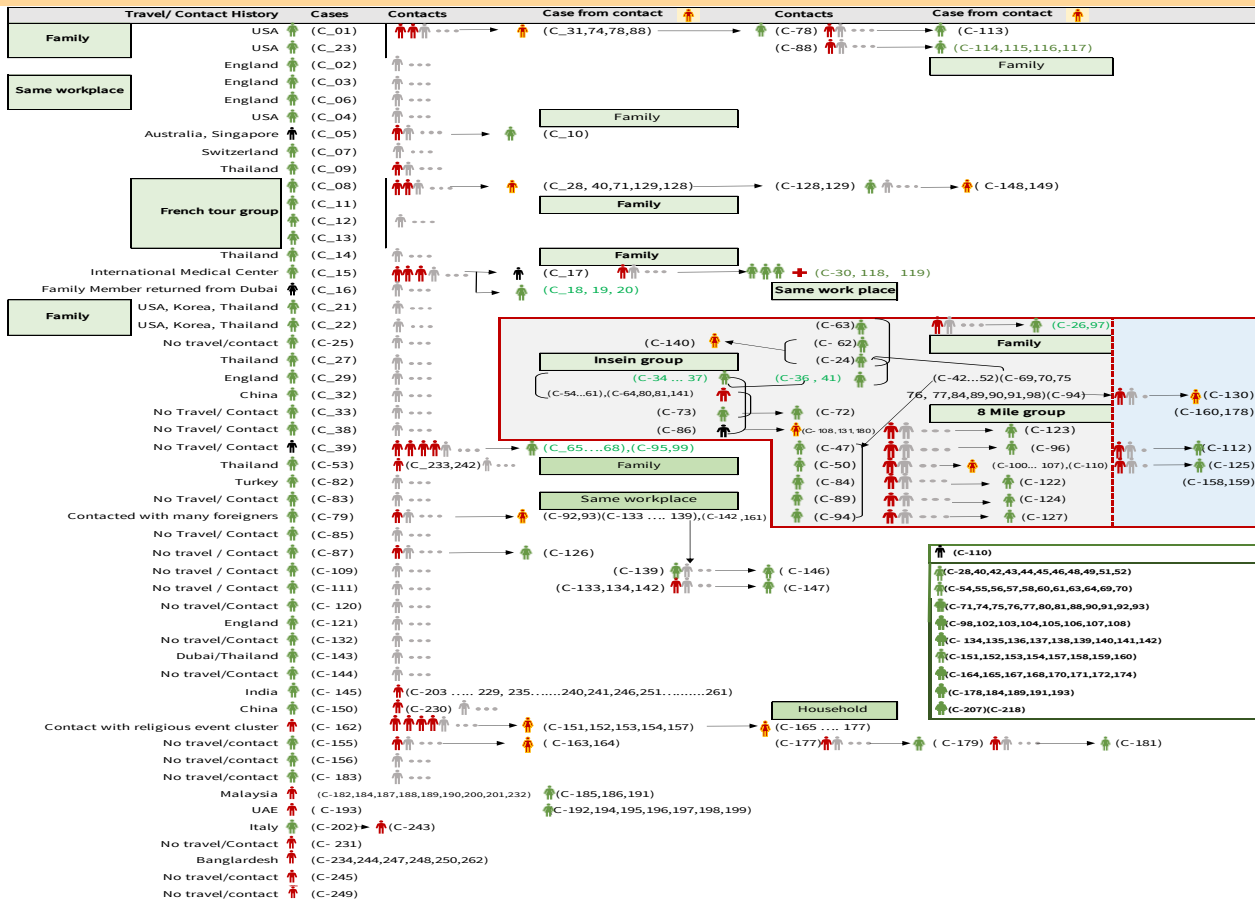
**Total laboratory confirmed cases by date (as of 14.6.2020, 11:30 pm), n= 262**



Cumulative Number of active confirmed cases, recovered and deaths ( 23.3.2020 – 14-6-2020), n (cumulative)=262



Summary of COVID-19 confirmed cases (as of 14-6-2020) ,n (contacts)= 5,407



## Summary of current situation

Type	New (13.6.2020-14.6.2020)	Total (on 14.6.2020)
<b>Suspected and Person Under Investigation (PUI)</b>	<b>38</b>	<b>243</b>
<b>Hospital Quarantine</b>	<b>12</b>	<b>96</b>
<b>Facility Quarantine</b>	<b>1,786</b>	<b>42,896</b>

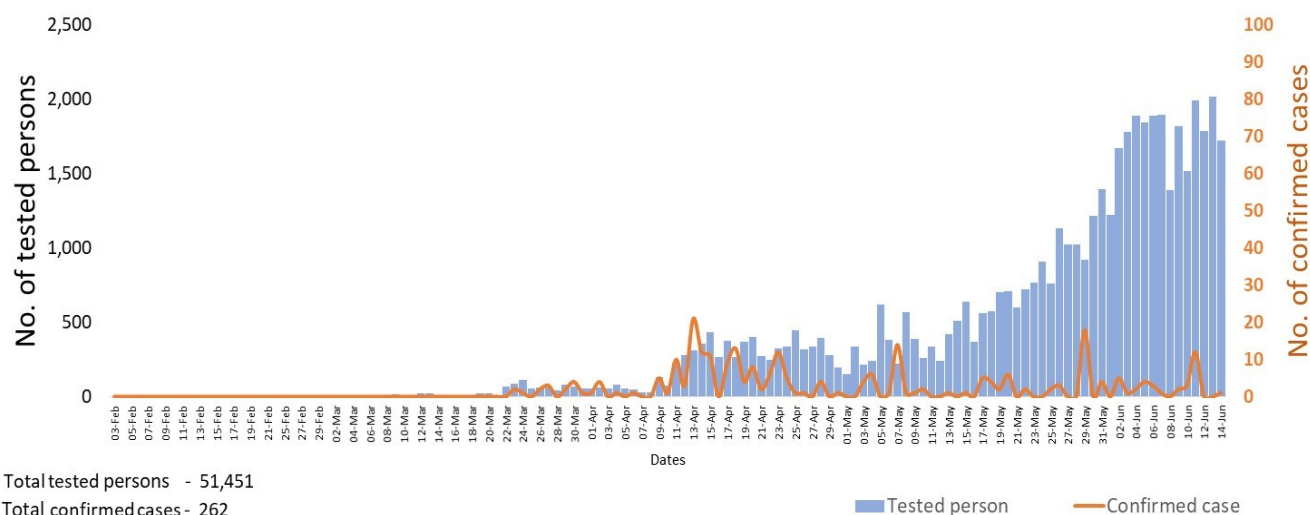
### Person under Investigation (PUI) by State/Region hospitals (13.6.2020 – 14.6.2020) n= 5,524

No.	State/Region	PUI
1.	Yangon	2,849
2.	Mandalay	1,018
3.	Kayin	205
4.	Mon	204
5.	Shan(N)	196
6.	Magway	183
7.	Bago	178
8.	Shan ( E )	112
9.	Ayeyarwaddy	100
10.	Shan(S)	94
11.	Sagaing	80
12.	Kayah	76
13.	Naypyitaw	62
14.	Rakhine	60
15.	Thanintharyi	54
16.	Kachin	31
17.	Chin	22
<b>Total</b>		<b>5,524</b>

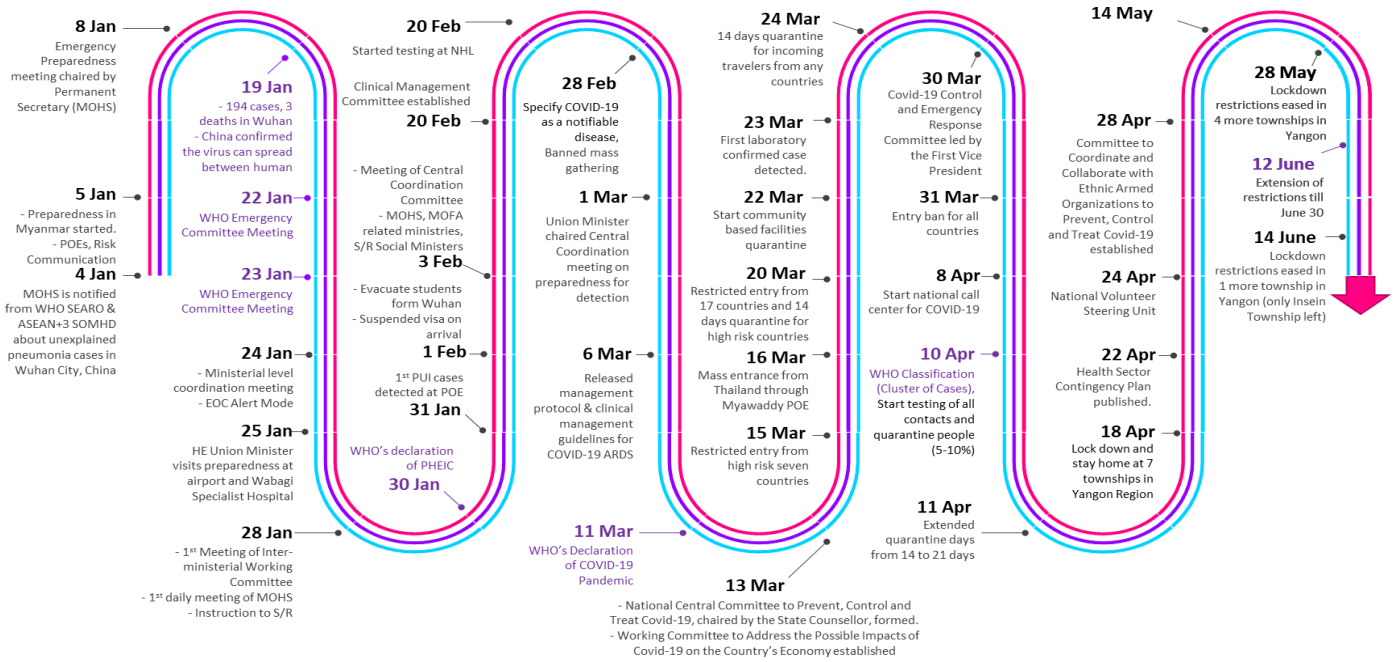
### No. of Facility Quarantine sites and Quarantined people on 14.6.2020

No.	State/Region	No. of facilities	Total no. of quarantine
1.	Magway	2,647	6,356
2.	Bago	492	6,850
3.	Kayin	970	4,405
4.	Mon	272	3,782
5.	Kachin	320	3,570
6.	Mandalay	244	2,779
7.	Yangon	79	2,705
8.	Sagaing	996	2,495
9.	Rakhine	514	2,452
10.	Ayeyarwaddy	554	1,790
11.	Shan S	122	1,699
12.	Tanintharyi	189	1,247
13.	Naypyitaw	19	1,184
14.	Shan North	366	981
15.	Chin	33	257
16.	Kayah	18	208
17.	Shan East	11	136
<b>Total</b>		<b>7,846</b>	<b>42,896</b>

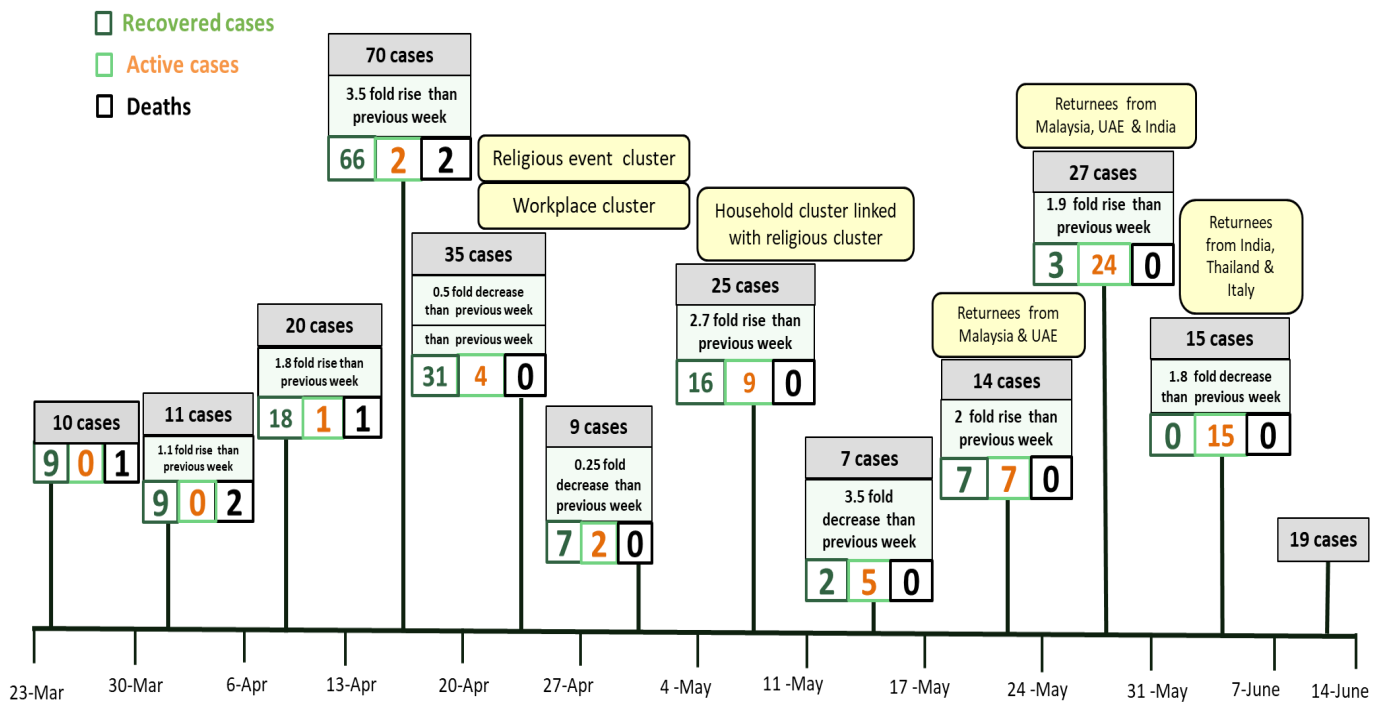
## COVID-19 confirmed cases among tested by date (as of 14.6.2020)



## Timeline of Preparedness and Response to COVID-19 in Myanmar (as of 14.6.2020)



## Summary of new confirmed cases detection after first two cases (as of 14.6.2020)



- Confirmed cases were detected as a peak in the 4th week after first confirmed cases due to the religious event cluster.
- Confirmed cases were decreased but still raised than the first 3 weeks due to the religious event cluster and workplace cluster.
- There were an increased in numbers of cases in the 7th week after the first two cases due to the household cluster linked with a religious cluster.
- Confirmed cases were detected by a nearly two-fold rise in the 9th and 10th weeks after the first two cases because of returnees coming back by relief flights.