



Ministry of Health and Sports (Myanmar)

Department of Public Health

Central Epidemiology Unit

(5 October 2020)

Coronavirus Disease 2019 (COVID-19)

Situation Report - 181

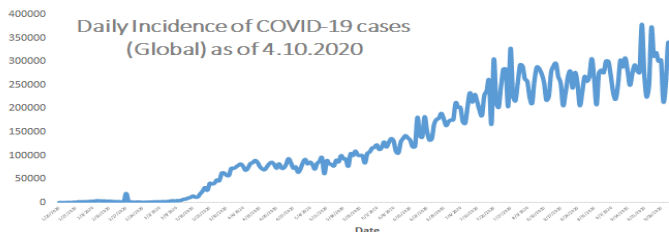
Data as reported by States and Regions by 4 October 2020

WHO Coronavirus Disease (COVID-19) Dashboard data as of 3:38 PM CEST 4 October 2020

Confirmed cases
34,804,348

Deaths
1030,738

Case Fatality Rate
3%



Myanmar Situation

Total Tested
291,484

Confirmed Cases
17,794

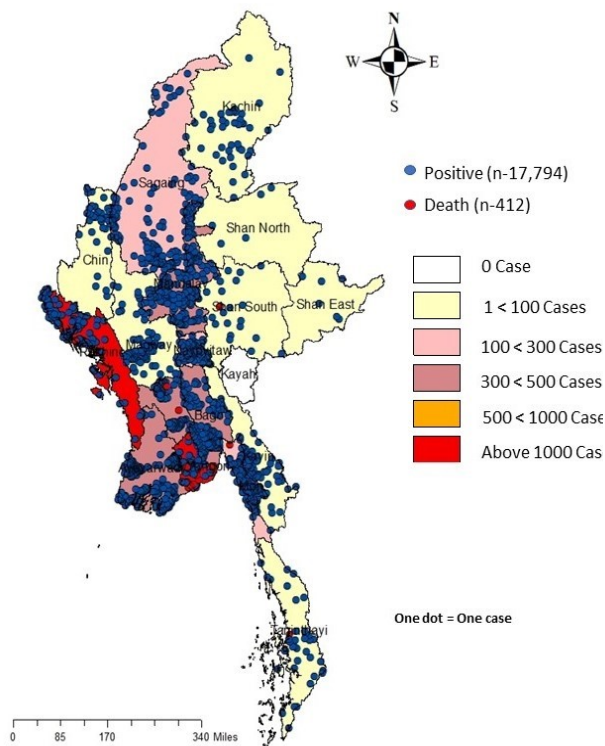
Negative
273,690

Discharged
5,195
29.1% of Confirmed cases

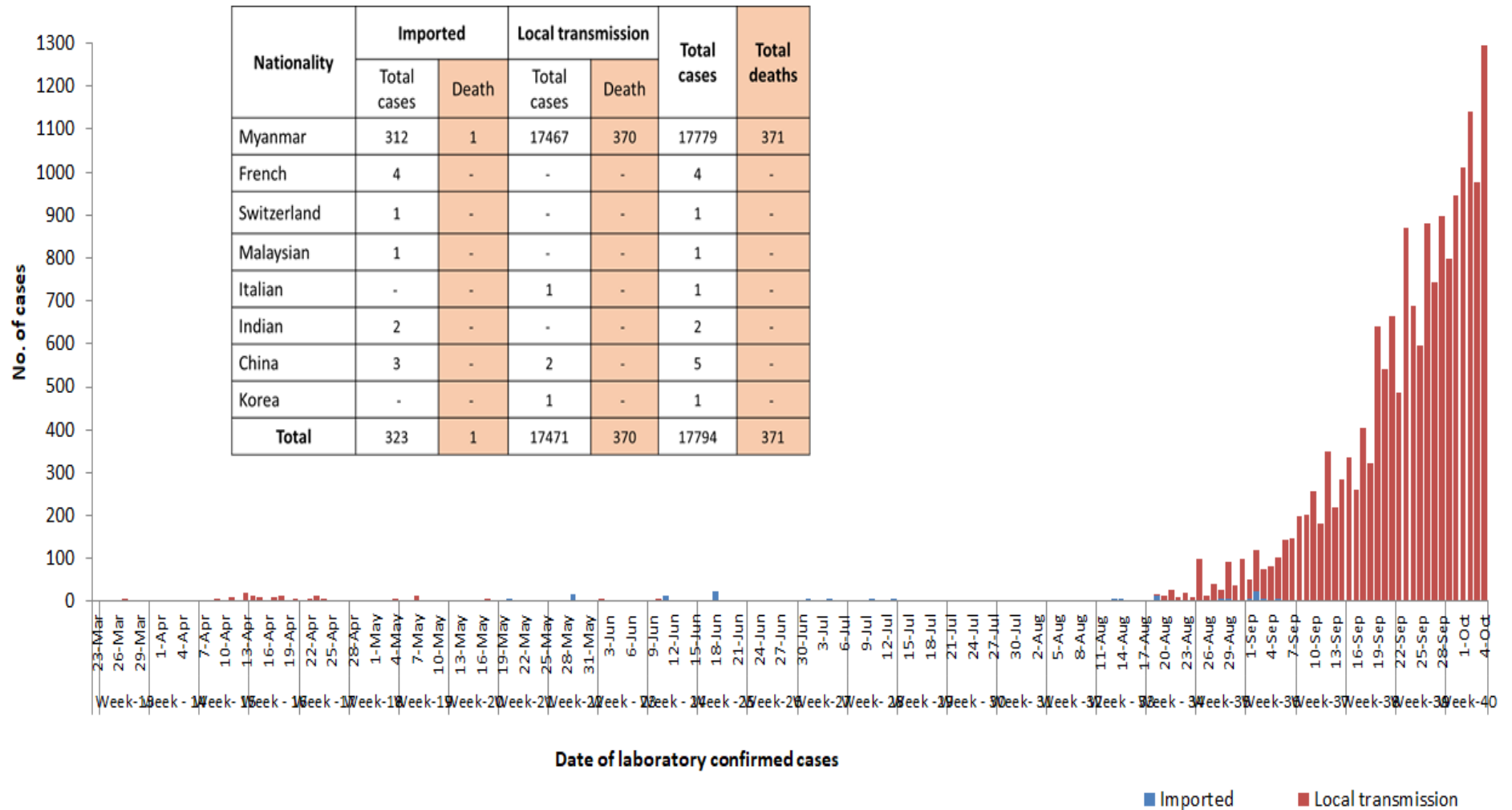
Death
412
2.2% of Confirmed cases

No	State/Region	COVID –19 Confirmed case	New confirmed cases within 24 hours	Deaths
1	Yangon	13,760	1045	387
2	Rakhine	1,817	112	6
3	Mandalay	467	39	2
4	Bago	452	4	3
5	Ayeyarwaddy	384	11	1
6	Mon	306	1	7
7	Naypyitaw	157	7	3
8	Sagaing	121	14	-
9	Thanintharyi	82	45	1
10	Magway	70	16	-
11	Kachin	51	-	-
12	Kayin	49	-	1
13	Chin	39	-	-
14	Shan (South)	28	-	1
15	Shan (East)	6	-	-
16	Shan (North)	5	-	-
17	Kayah	-	-	-
Total		17,794	1,294	412

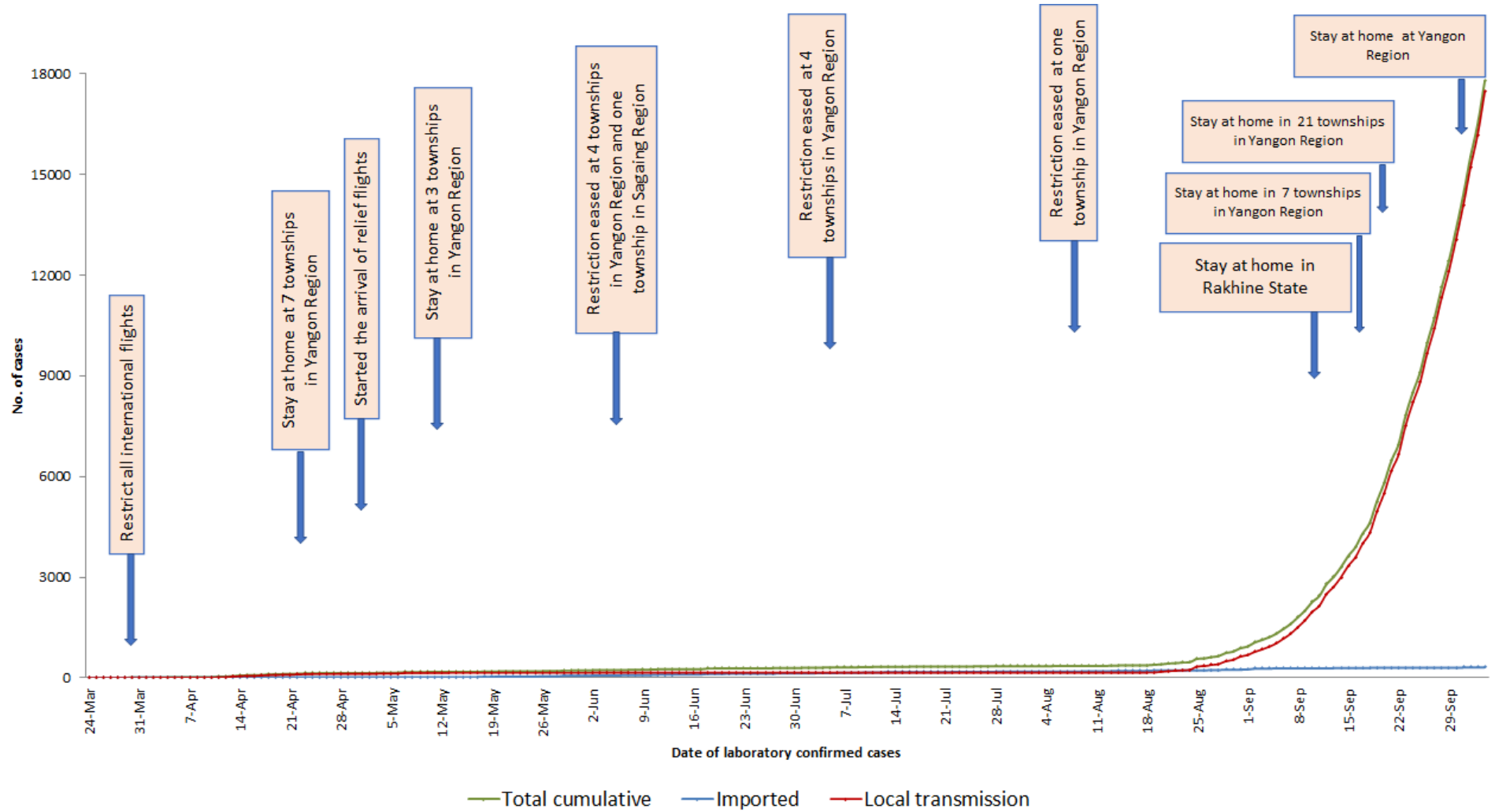
Map showing COVID-19 laboratory confirmed cases



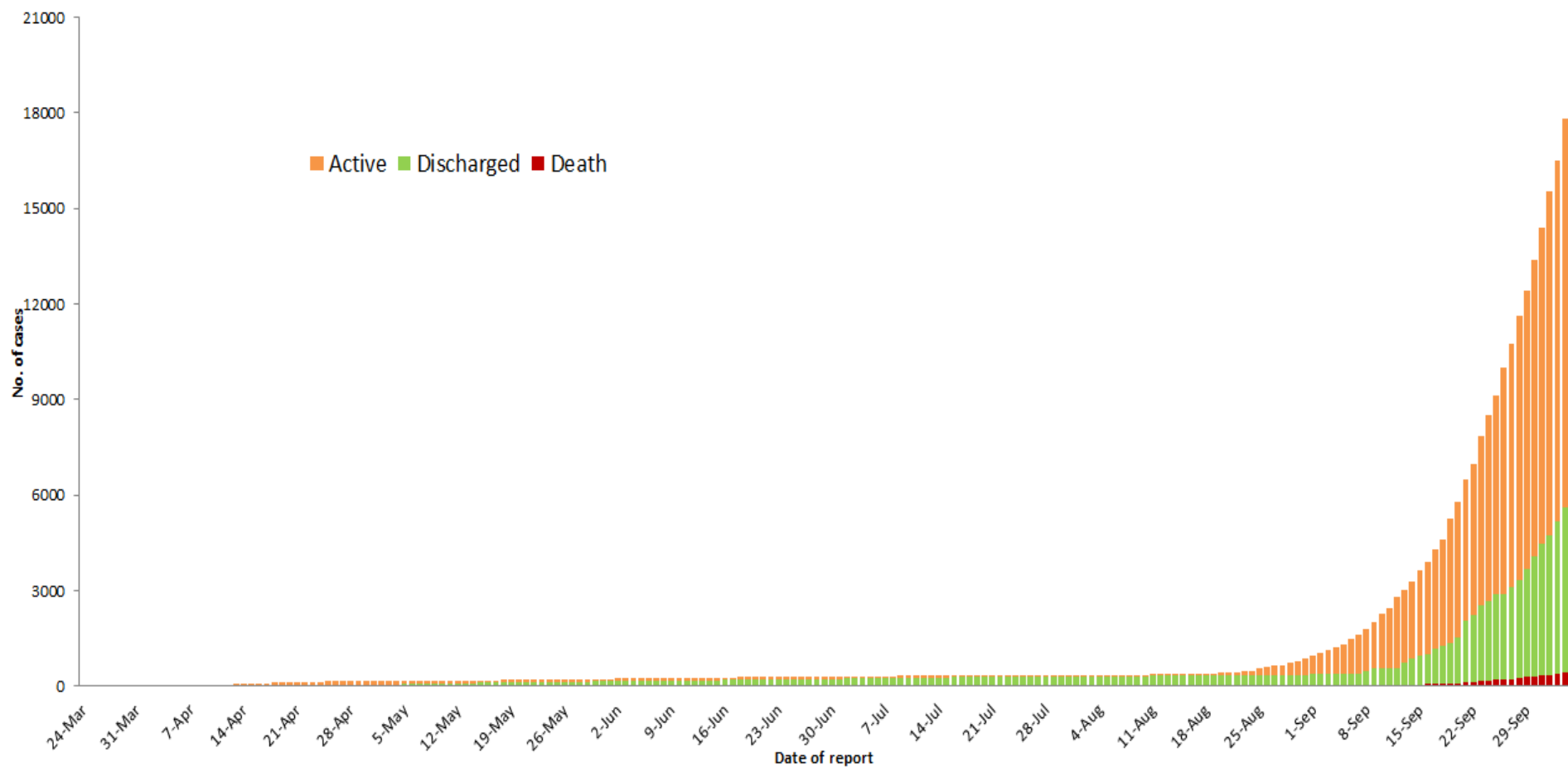
COVID-19 confirmed cases by types of transmissions (as of 4.10.2020) n=17,794



Total laboratory confirmed cases by date (as of 4.10.2020), n= 17,794



Cumulative Number of active confirmed cases, recovered and deaths (23.3.2020 – 4.10.2020), n (cumulative)=17,794

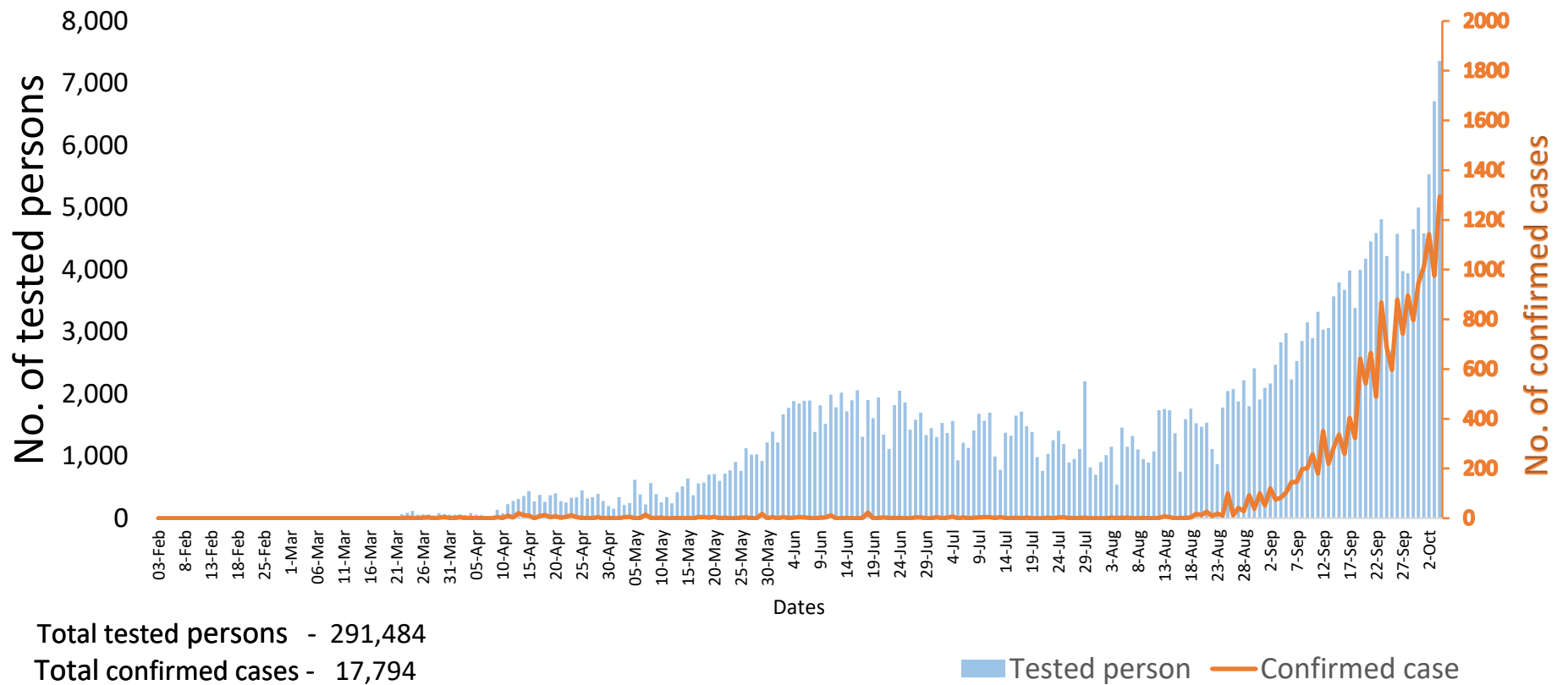


Summary of current situation		
Type	New (3.10.2020-4.10.2020)	Total (on 4.10.2020)
Suspected and Person Under Investigation (PUI)	534	1,839
Hospital Quarantine	31	402
Facility Quarantine	2,772	45,005

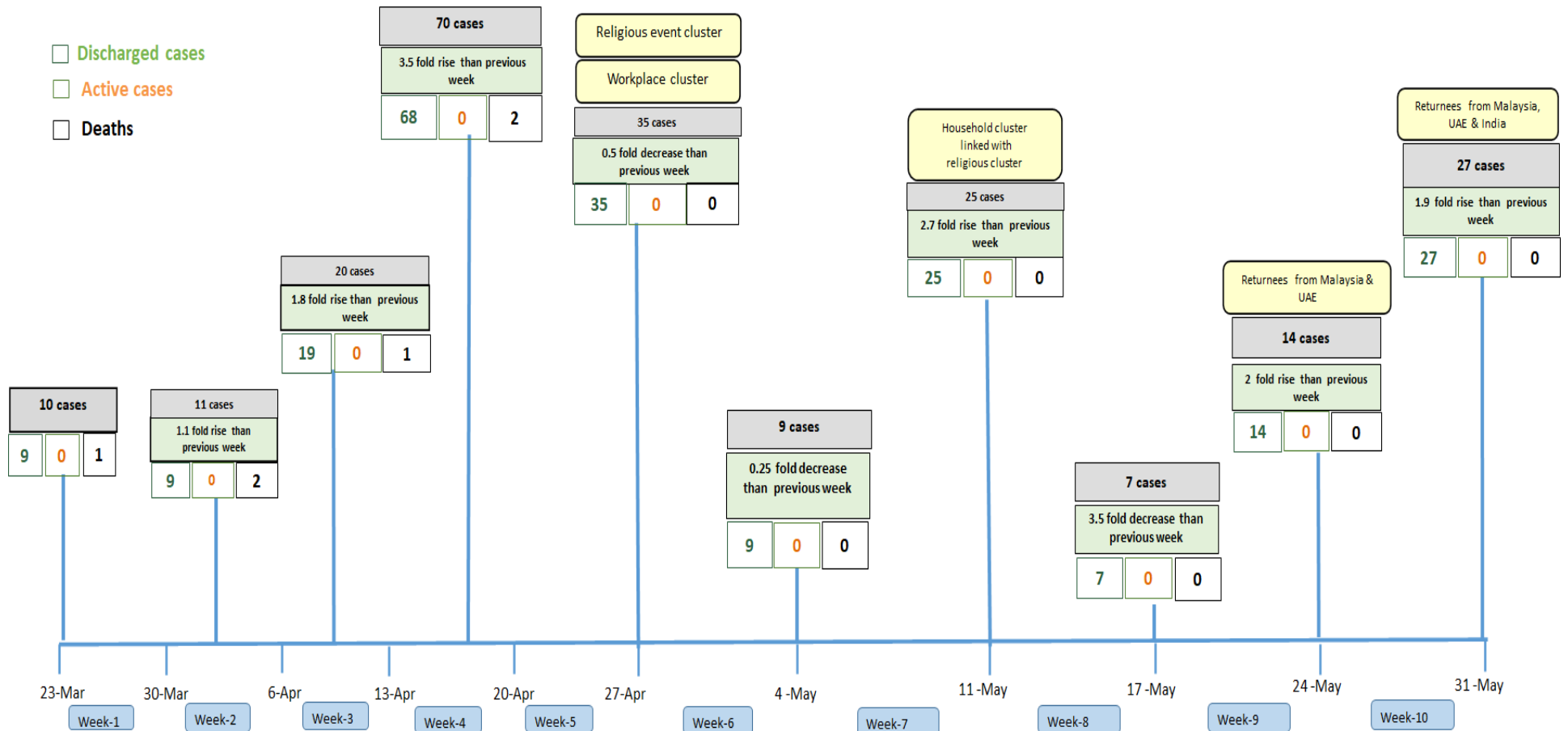
Person under Investigation (PUI) by State/Region hospitals (31.1.2020 – 4.10.2020) n= 17,990			No. of Facility Quarantine sites and Quarantined people on 4.10.2020			
No.	State/Region	PUI	No.	State/Region	No. of facilities	Total no. of quarantine
1	Yangon	11524	1	Bago	1101	8434
2	Mandalay	2520	2	Ayeyarwaddy	1143	6214
3	Mon	726	3	Yangon	87	4769
4	Kayin	484	4	Sagaing	665	4351
5	Magway	417	5	Magway	603	4347
6	Rakhine	375	6	Kachin	271	3496
7	Bago	351	7	Mandalay	377	2825
8	Shan (N)	344	8	Mon	91	2230
9	Ayeyarwaddy	340	9	Kayin	324	1915
10	Shan (S)	151	10	Rakhine	284	1361
11	Thanintharyi	148	11	Shan South	115	1341
12	Shan (E)	141	12	Tanintharyi	153	1033
13	Sagaing	134	13	Shan North	386	998
14	Naypyitaw	106	14	Naypyitaw	11	888
15	Kayah	87	15	Chin	32	356
16	Kachin	86	16	Kayah	12	314
17	Chin	56	17	Shan East	19	133
Total		17,990	Total		5,674	45,005

*Facility quarantine rule changed from 21 days to 14 days on 11-9-2020 while 7 days home quarantine rule remain unchanged.

COVID-19 confirmed cases among tested by date (as of 4.10.2020)

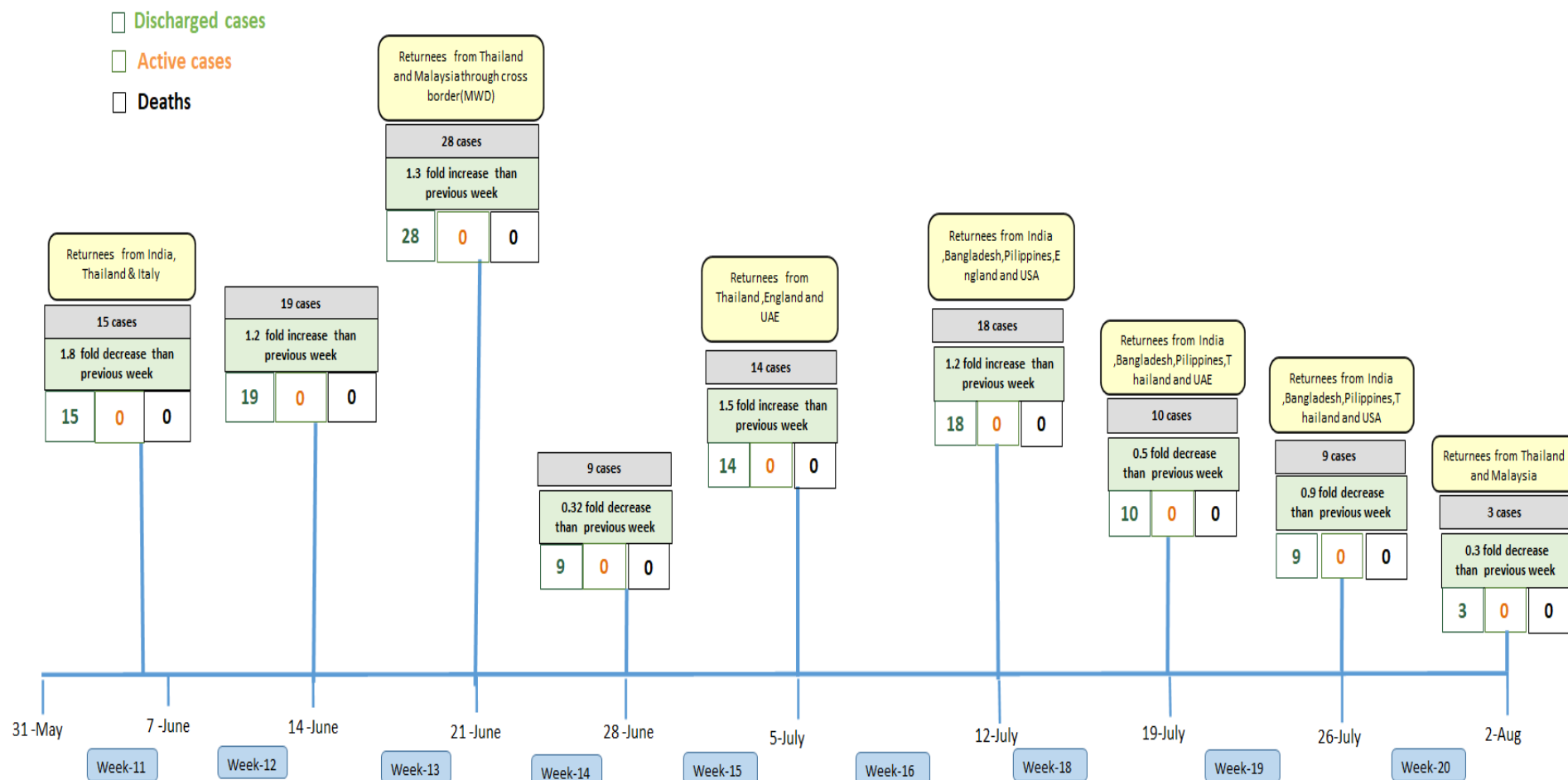


Summary of new confirmed cases detection after first two cases (as of 4.10.2020)



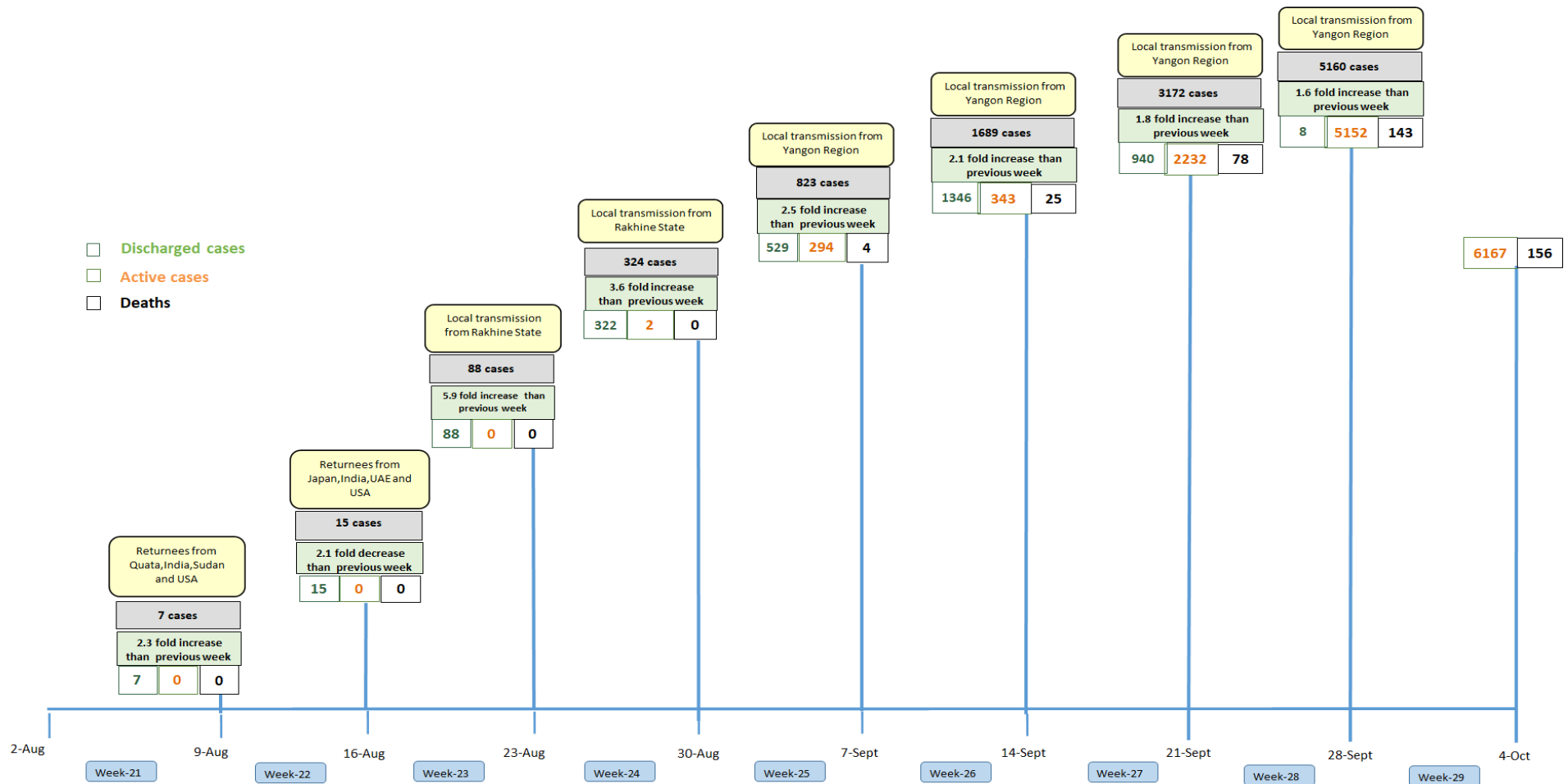
- Confirmed cases were detected as a peak in the 4th week after first confirmed cases due to the religious event cluster.
- Confirmed cases were decreased but still raised than the first 3 weeks due to the religious event cluster and workplace cluster.
- There were an increased in numbers of cases in the 7th week after the first two cases due to the household cluster linked with a religious cluster.
- Confirmed cases were detected by a nearly two-fold rise in the 9th and 10th weeks after the first two cases because of returnees coming back by relief flights.

Summary of new confirmed cases detection after first two cases (as of 4.10.2020)



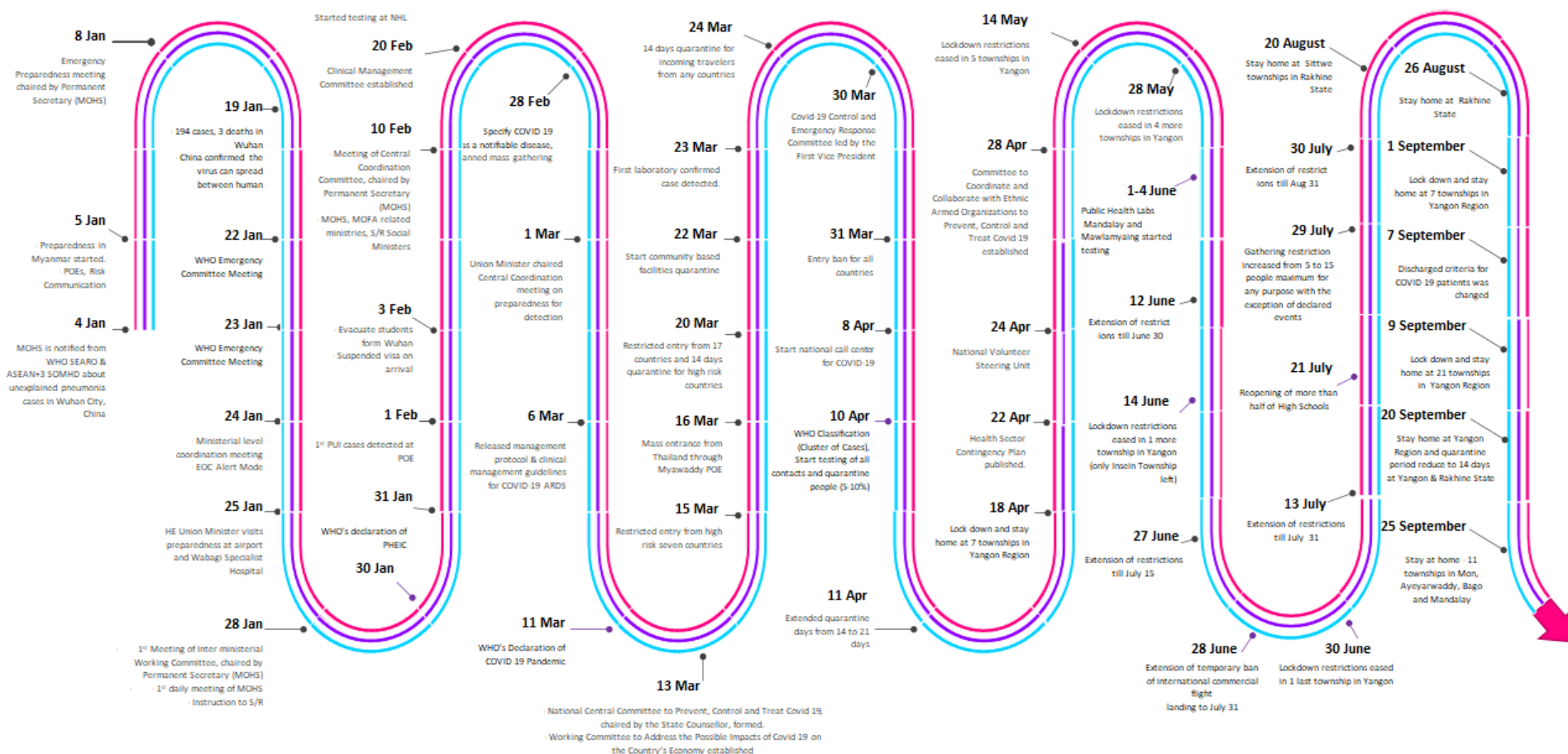
- Confirmed cases were detected as a peak in the 4th week after first confirmed cases due to the religious event cluster.
- Confirmed cases were decreased but still raised than the first 3 weeks due to the religious event cluster and workplace cluster.
- There were an increased in numbers of cases in the 7th week after the first two cases due to the household cluster linked with a religious cluster.
- Confirmed cases were detected by a nearly two-fold rise in the 9th and 10th weeks after the first two cases because of returnees coming back by relief flights.

Summary of new confirmed cases detection after first two cases (as of 4.10.2020)



- Confirmed cases were detected as a peak in the 4th week after first confirmed cases due to the religious event cluster.
- Confirmed cases were decreased but still raised than the first 3 weeks due to the religious event cluster and workplace cluster.
- There were an increased in numbers of cases in the 7th week after the first two cases due to the household cluster linked with a religious cluster.
- Confirmed cases were detected by a nearly two-fold rise in the 9th and 10th weeks after the first two cases because of returnees coming back by relief flights.

Timeline of Preparedness and Response to COVID-19 in Myanmar (as of 4.10.2020)



Hotline Number— 0673 420 268

Data source - CEU, DMS, NHL, PHL (MDY and MLM), DMR, DSGH, State and Region Health Departments