



# Ministry of Health and Sports (Myanmar)

## Department of Public Health

### Central Epidemiology Unit

( 29 June 2020 )

### Coronavirus Disease 2019 (COVID-19)

Situation Report - 83

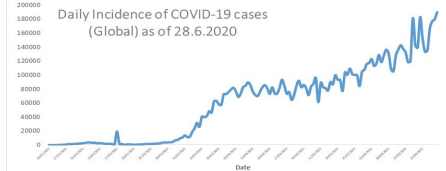
Data as reported by States and Regions by 1:00 AM MST 29 June 2020

**Global Situation**  
(WHO situation report - 160)  
data as of 14:30 MST 28 June 2020

**Confirmed cases**  
**9,843,073**

**Deaths**  
**495,760**

**Case Fatality Rate**  
**5.0 %**



### Myanmar Situation

**Total tested**  
**74,978**

**Confirmed cases**  
**299**

**Negative**  
**74,679**

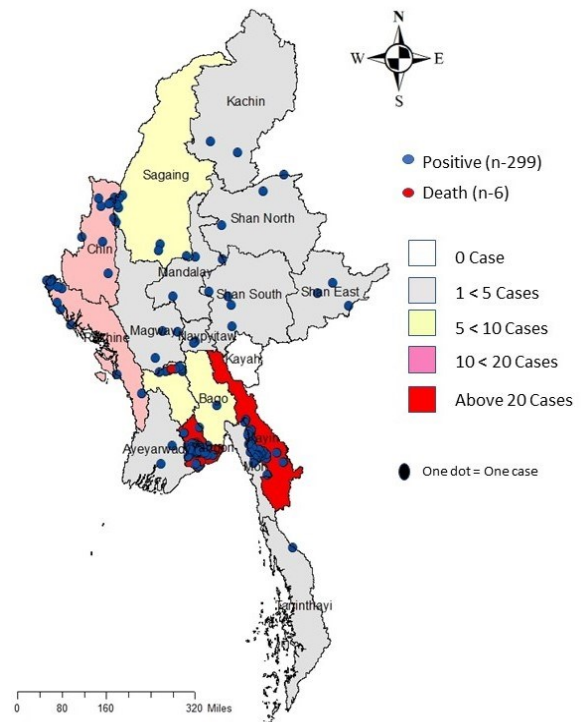
**Recovered**  
**221**  
73.9 % of confirmed cases

**Active**  
**72**  
24.0% of confirmed cases

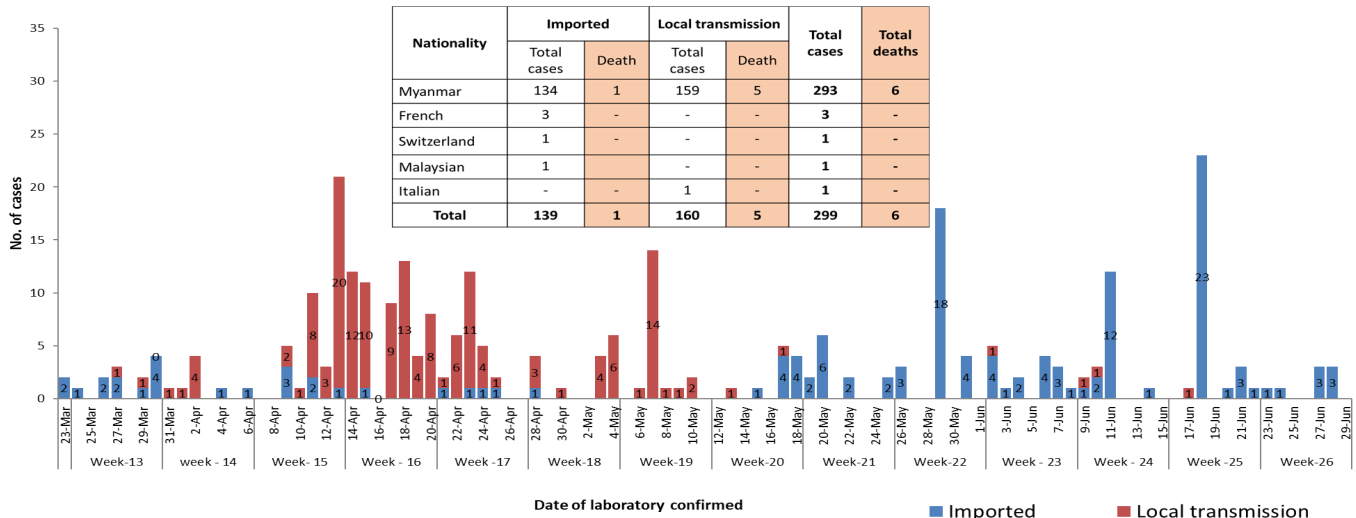
**Death**  
**6**  
2.0% of confirmed cases

No.	State/Region	COVID-19 Confirmed case	Recovered	Deaths
1	Yangon	209(3 New)	167	5
2	Kayin	26	2	-
3	Rakhine	12	4	-
4	Chin	10	9(3 New)	-
5	Sagaing	9	8	-
6	Bago	8	7	1
7	Shan(South)	4	4	-
8	Mandalay	3	3	-
9	Shan(East)	3	4	-
10	Shan(North)	3	2	-
11	Magway	3	3	-
12	Naypyitaw	2	2	-
13	Ayeyarwaddy	2	2	-
14	Kachin	2	1	-
15	Mon	2	1	-
16	Thanintharyi	1	1	-
17	Kayah	-	-	-
<b>Total</b>		<b>299(3 New)</b>	<b>221 (3 New)</b>	<b>6</b>

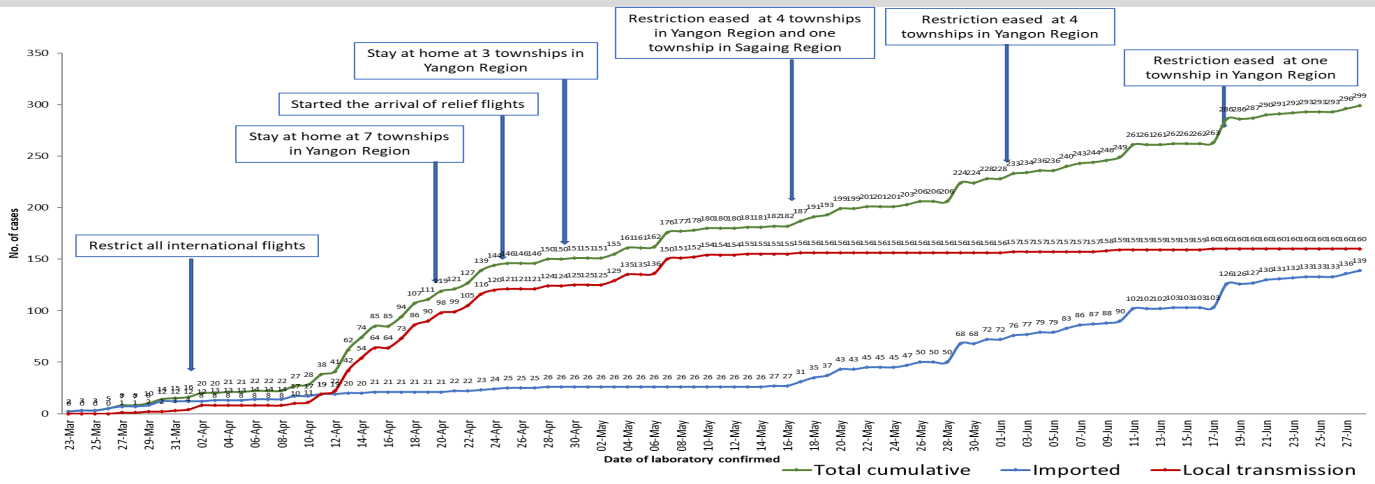
Map showing COVID-19 laboratory confirmed cases



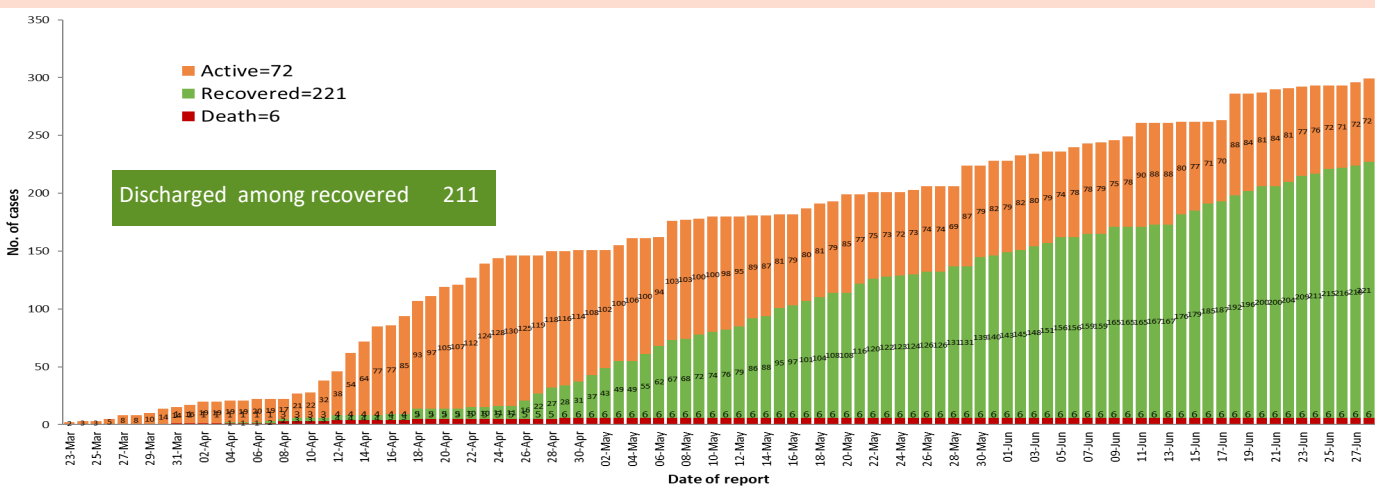
COVID-19 confirmed cases by types of transmissions (as of 29.6.2020, 1:00 am) n=299



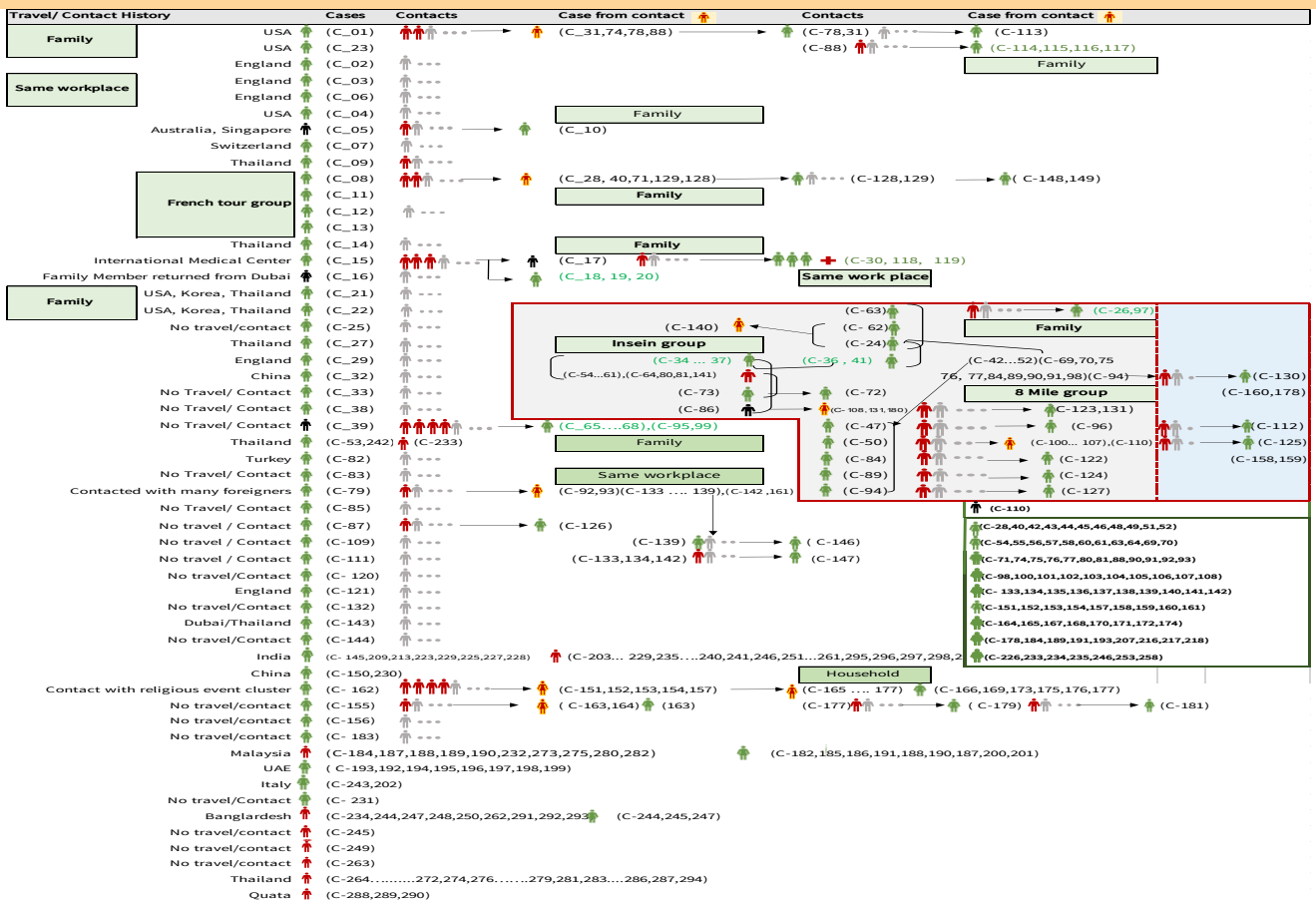
### Total laboratory confirmed cases by date (as of 29.6.2020, 1:00 am), n= 299



### Cumulative Number of active confirmed cases, recovered and deaths ( 23.3.2020 – 28.6.2020), n (cumulative)=299



### Summary of COVID-19 confirmed cases (as of 28.6.2020) ,n (contacts)=5,583



## Summary of current situation

Type	New (27.6.2020-28.6.2020)	Total (on 28.6.2020)
Suspected and Person Under Investigation (PUI)	19	179
Hospital Quarantine	3	43
Facility Quarantine	896	28,787

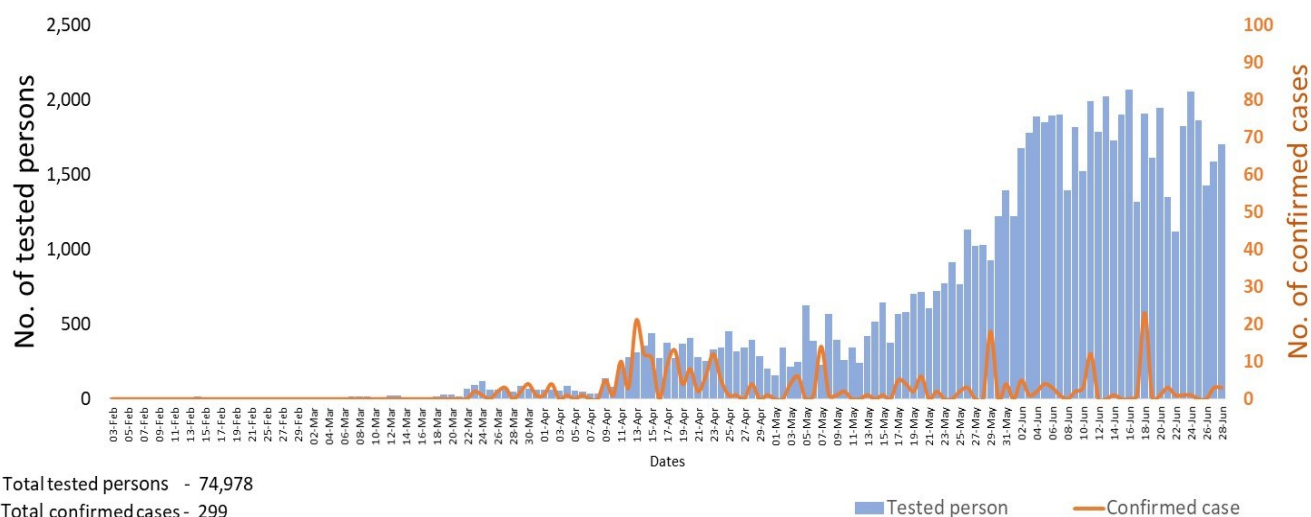
Person under Investigation (PUI) by State/Region hospitals (31.1.2020 – 28.6.2020) n= 5,924

No. of Facility Quarantine sites and Quarantined people on 28.6.2020

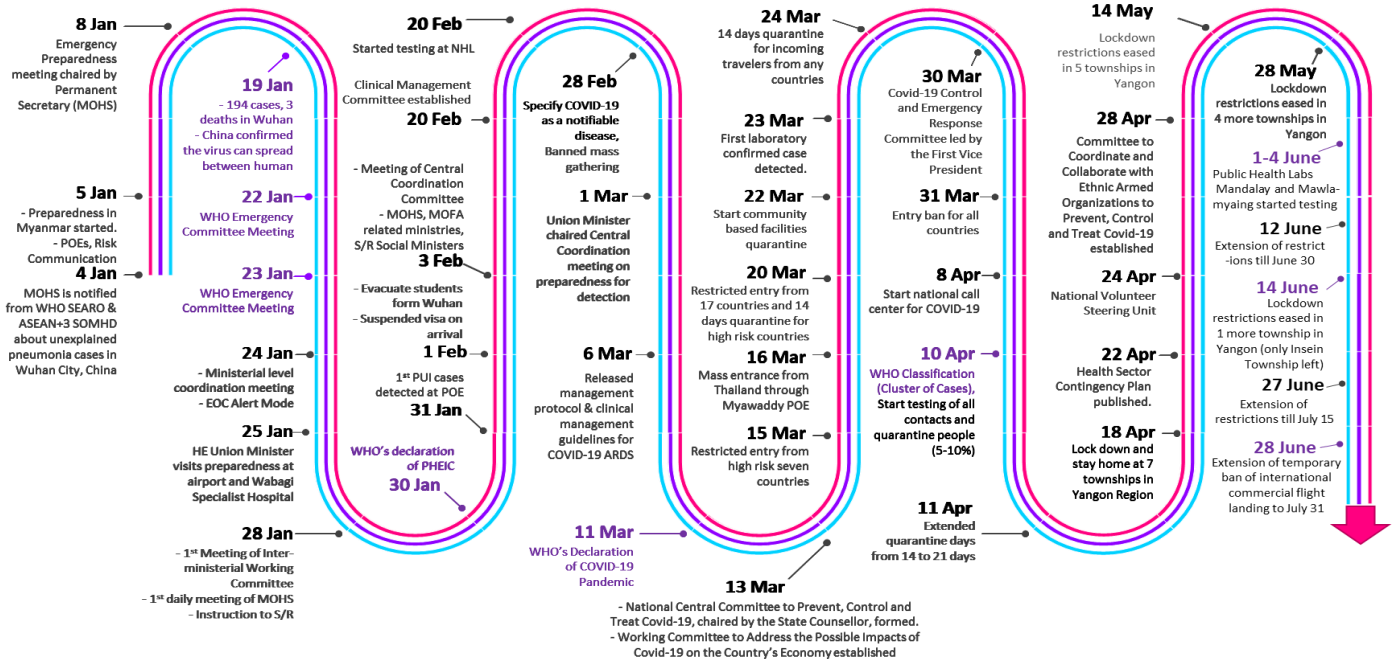
No.	State/Region	PUI
1.	Yangon	3,033
2.	Mandalay	1,139
3.	Kayin	233
4.	Mon	221
5.	Shan(N)	201
6.	Magway	198
7.	Bago	180
8.	Shan ( E )	115
9.	Ayeyarwaddy	102
10.	Shan(S)	96
11.	Sagaing	85
12.	Kayah	76
13.	Rakhine	67
14.	Naypyitaw	63
15.	Thanintharyi	58
16.	Kachin	34
17.	Chin	23
<b>Total</b>		<b>5,924</b>

No.	State/Region	No. of facilities	Total no. of quarantine
1.	Bago	350	3,847
2.	Yangon	80	3,750
3.	Magway	2,625	3,612
4.	Kayin	723	3,031
5.	Mon	281	2,836
6.	Kachin	412	2,253
7.	Mandalay	127	1,658
8.	Sagaing	969	1,544
9.	Rakhine	396	1,508
10.	Shan S	128	1,287
11.	Tanintharyi	189	1,164
12.	Ayeyarwaddy	195	869
13.	Naypyitaw	19	615
14.	Shan North	239	340
15.	Chin	26	223
16.	Kayah	18	136
17.	Shan East	11	114
<b>Total</b>		<b>6,788</b>	<b>28,787</b>

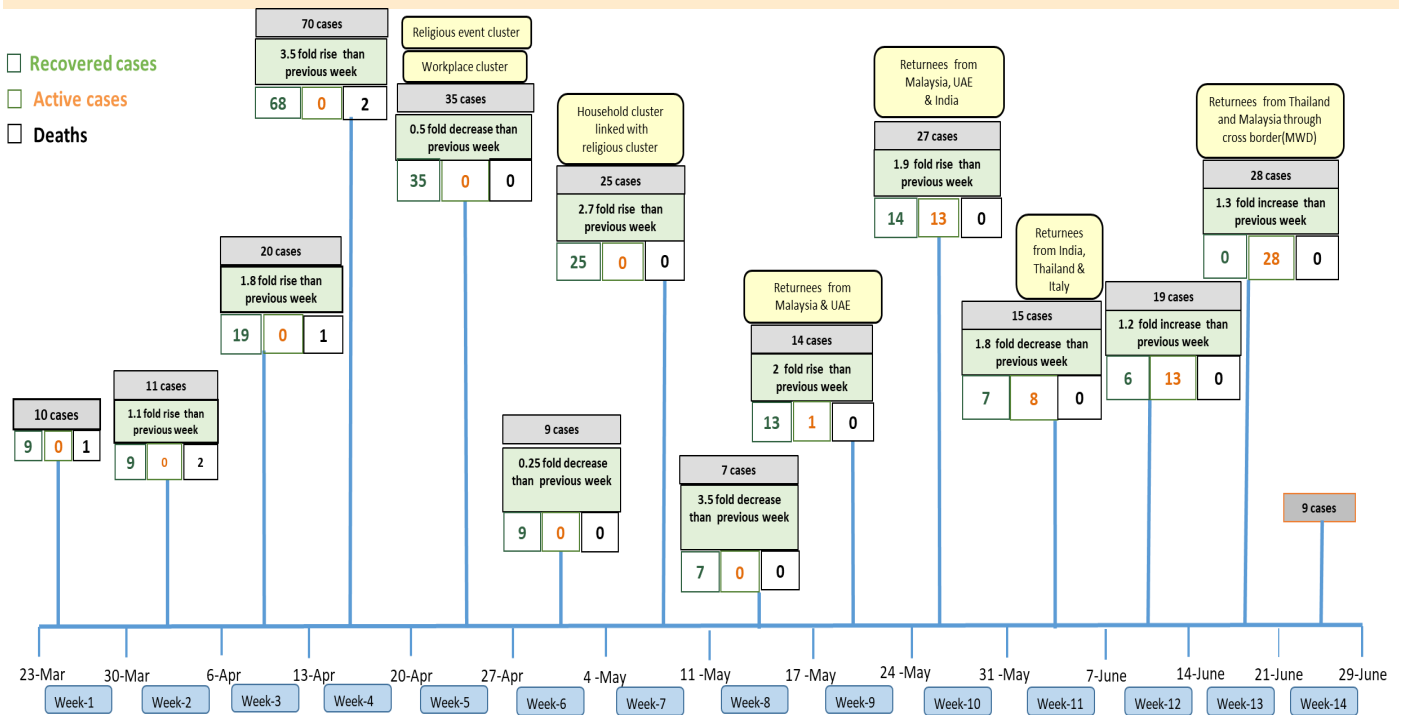
COVID-19 confirmed cases among tested by date (as of 28.6.2020)



# Timeline of Preparedness and Response to COVID-19 in Myanmar (as of 28.6.2020)



## Summary of new confirmed cases detection after first two cases (as of 28.6.2020)



- Confirmed cases were detected as a peak in the 4th week after first confirmed cases due to the religious event cluster.
- Confirmed cases were decreased but still raised than the first 3 weeks due to the religious event cluster and workplace cluster.
- There were an increased in numbers of cases in the 7th week after the first two cases due to the household cluster linked with a religious cluster.
- Confirmed cases were detected by a nearly two-fold rise in the 9th and 10th weeks after the first two cases because of returnees coming back by relief flights.