



# Ministry of Health and Sports (Myanmar)

## Department of Public Health

### Central Epidemiology Unit

( 24 June 2020)

#### Coronavirus Disease 2019 (COVID-19)

Situation Report - 78

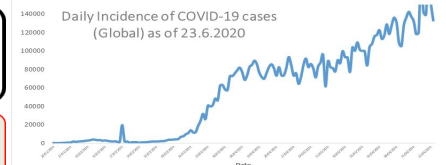
Data as reported by States and Regions by 11:30 PM MST 23 June 2020

**Global Situation**  
(WHO situation report - 155)  
data as of 14:30 MST 23 June 2020

**Confirmed cases**  
**8,993,659**

**Deaths**  
**469,587**

**Case Fatality Rate**  
**5.2 %**



#### Myanmar Situation

**Total tested**  
**66,353**

**Confirmed cases**  
**292**

**Negative**  
**66,061**

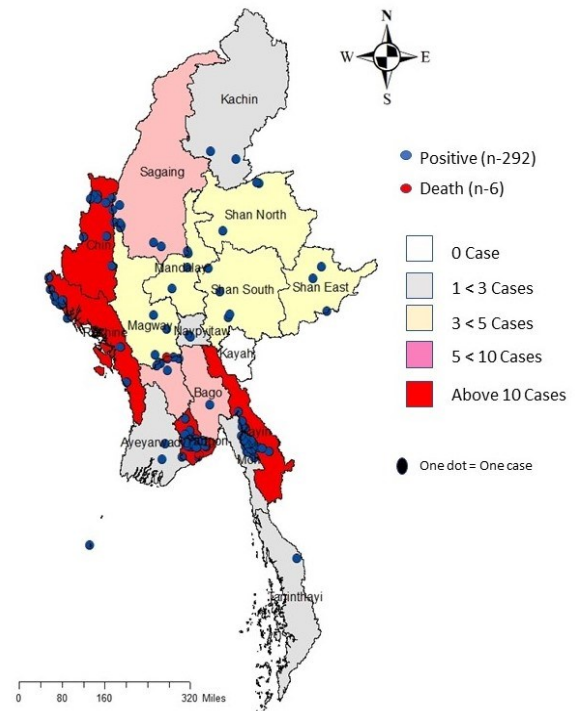
**Recovered**  
**208**  
71.2 % of confirmed cases

**Active**  
**78**  
26.7 % of confirmed cases

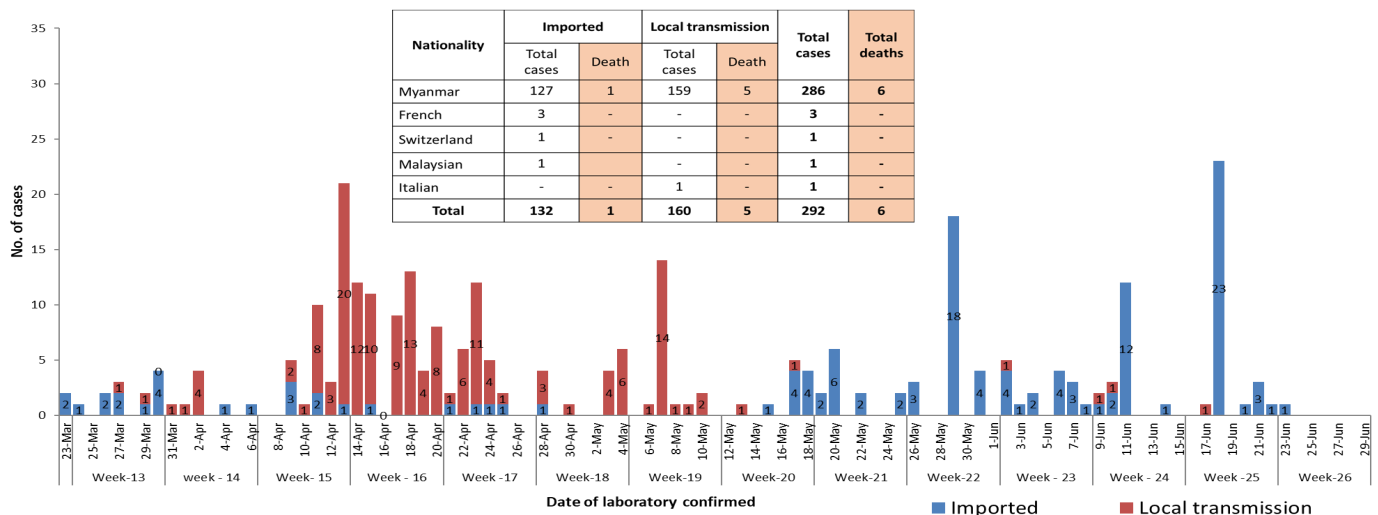
**Death**  
**6**  
2.1 % of confirmed cases

No.	State/Region	COVID -19 Confirmed	Recovered	Deaths
1	Yangon	204	162 (4 New)	5
2	Kayin	25	2	-
3	Chin	10	6	-
4	Rakhine	11 (1 New)	3	-
5	Sagaing	9	7	-
6	Bago	8	7	1
7	Shan(South)	4	3	-
8	Mandalay	3	3	-
9	Shan(East)	3	4	-
10	Shan(North)	3	2	-
11	Magway	3	2	-
12	Naypyitaw	2	2	-
13	Ayeyarwaddy	2	2	-
14	Kachin	2	1	-
15	Mon	2	1	-
16	Thanintharyi	1	1	-
17	Kayah	-	-	-
<b>Total</b>		<b>292 (1 New)</b>	<b>208 (4 New)</b>	<b>6</b>

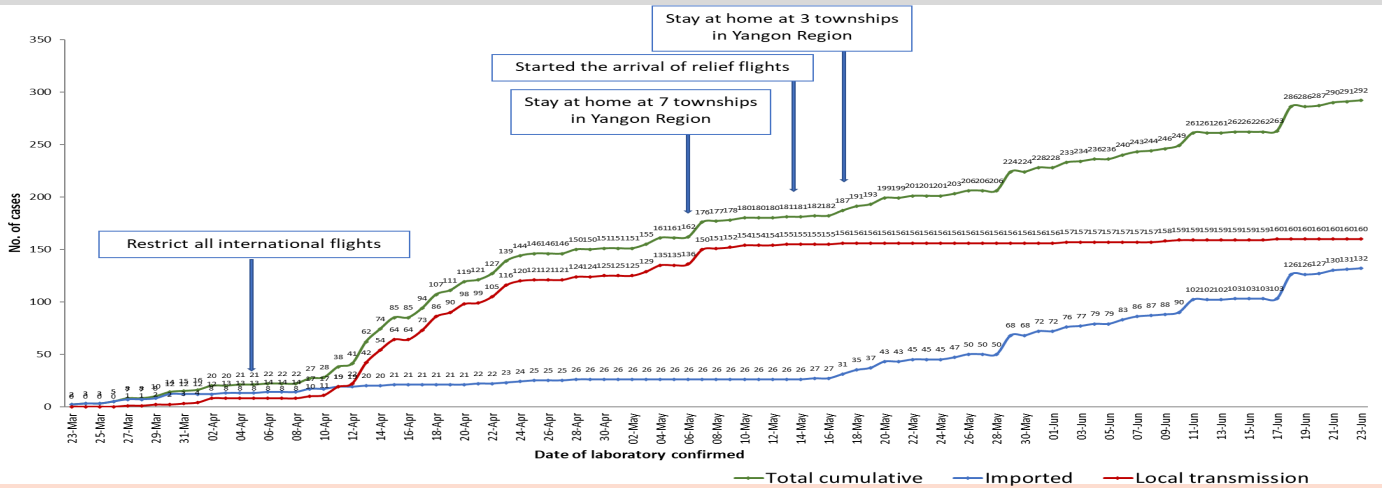
Map showing COVID-19 laboratory confirmed cases



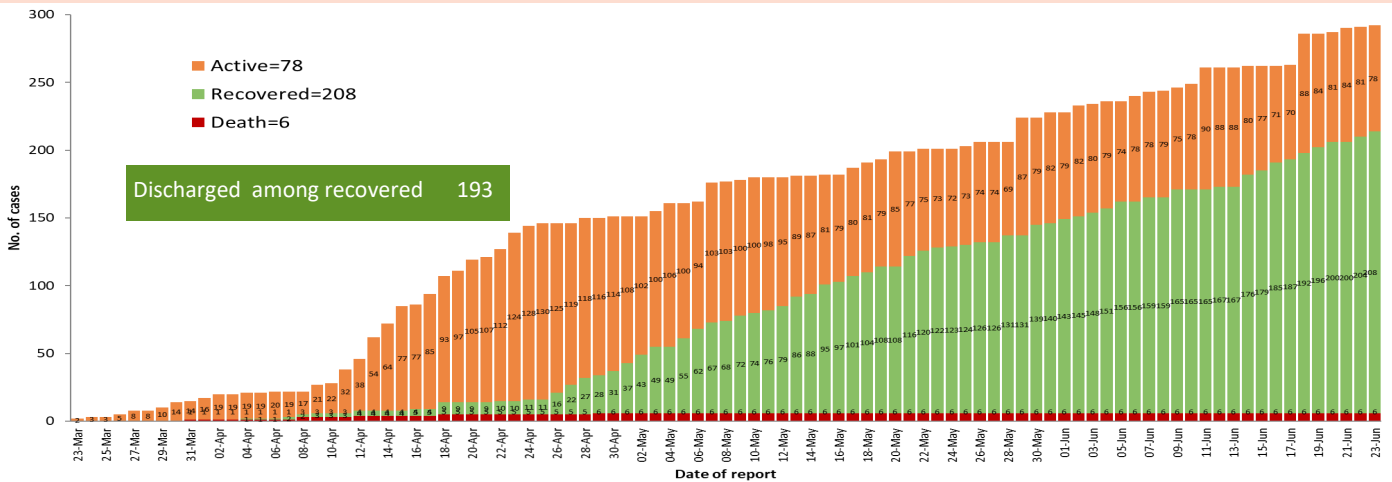
COVID-19 confirmed cases by types of transmissions (as of 23.6.2020, 11:30 pm) n=292



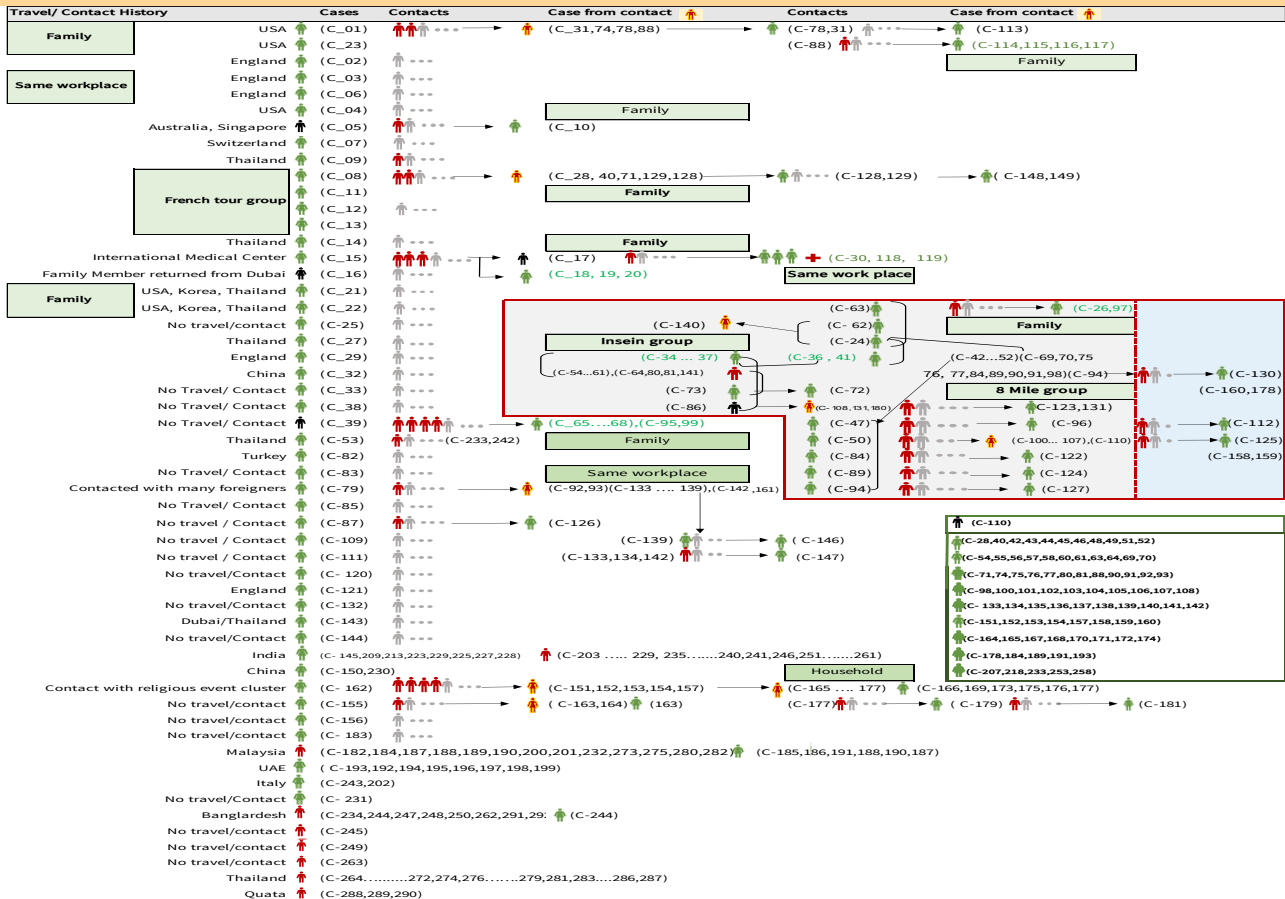
## Total laboratory confirmed cases by date (as of 23.6.2020, 11:30 pm), n= 292



## Cumulative Number of active confirmed cases, recovered and deaths ( 23.3.2020 – 23.6.2020), n (cumulative)=292



## Summary of COVID-19 confirmed cases (as of 23.6.2020) ,n (contacts)= 5,514



## Summary of current situation

Type	New (22.6.2020-23.6.2020)	Total (on 23.6.2020)
Suspected and Person Under Investigation (PUI)	34	235
Hospital Quarantine	7	85
Facility Quarantine	1,470	34,376

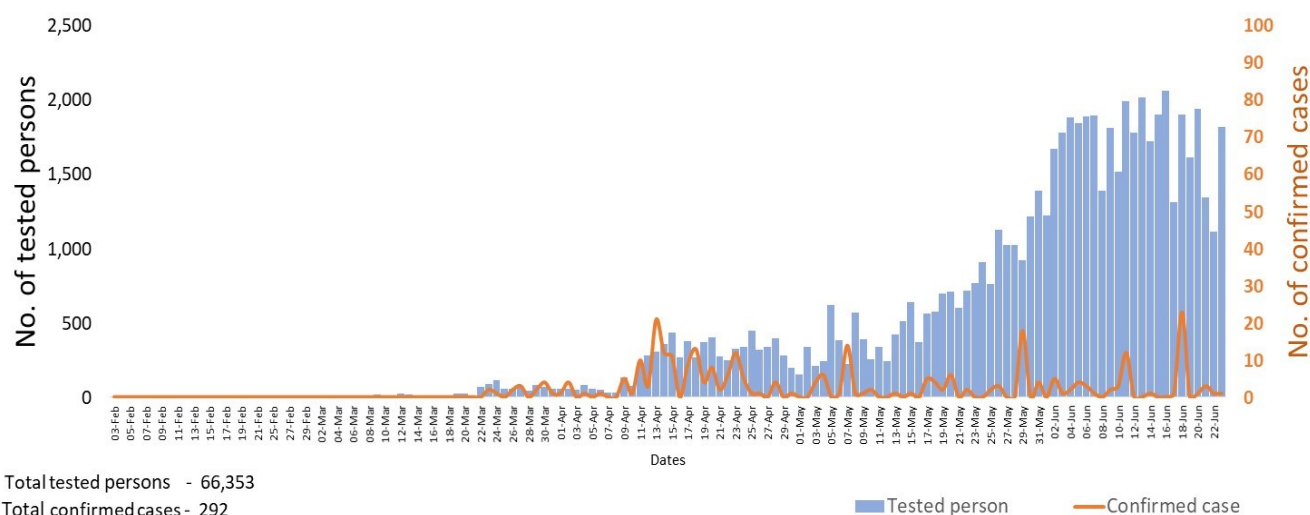
### Person under Investigation (PUI) by State/Region hospitals (22.6.2020 – 23.6.2020) n= 5,793

No.	State/Region	PUI
1.	Yangon	2,971
2.	Mandalay	1,101
3.	Kayin	221
4.	Mon	214
5.	Shan(N)	200
6.	Magway	194
7.	Bago	179
8.	Shan(E)	113
9.	Ayeyarwaddy	102
10.	Shan(S)	96
11.	Sagaing	83
12.	Kayah	76
13.	Rakhine	66
14.	Naypyitaw	63
15.	Thanintharyi	58
16.	Kachin	34
17.	Chin	22
<b>Total</b>		<b>5,793</b>

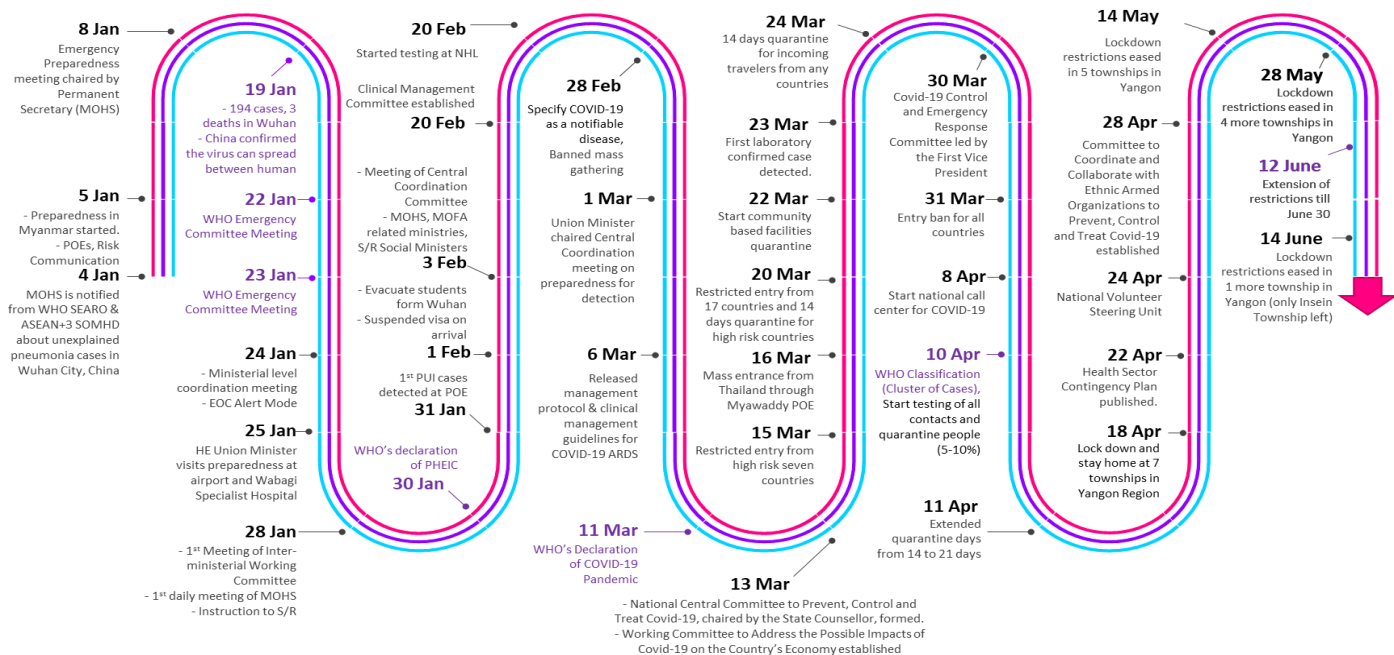
### No. of Facility Quarantine sites and Quarantined people on 23.6.2020

No.	State/Region	No. of facilities	Total no. of quarantine
1.	Magway	2,619	4,654
2.	Bago	383	4,634
3.	Kayin	982	4,133
4.	Mon	321	3,287
5.	Yangon	83	3,284
6.	Kachin	411	2,957
7.	Mandalay	128	1,956
8.	Rakhine	456	1,953
9.	Sagaing	969	1,852
10.	Shan South	158	1,377
11.	Tanintharyi	189	1,322
12.	Ayeyarwaddy	198	1,316
13.	Naypyitaw	19	727
14.	Shan North	235	391
15.	Chin	30	240
16.	Shan East	11	160
17.	Kayah	18	133
<b>Total</b>		<b>7,210</b>	<b>34,376</b>

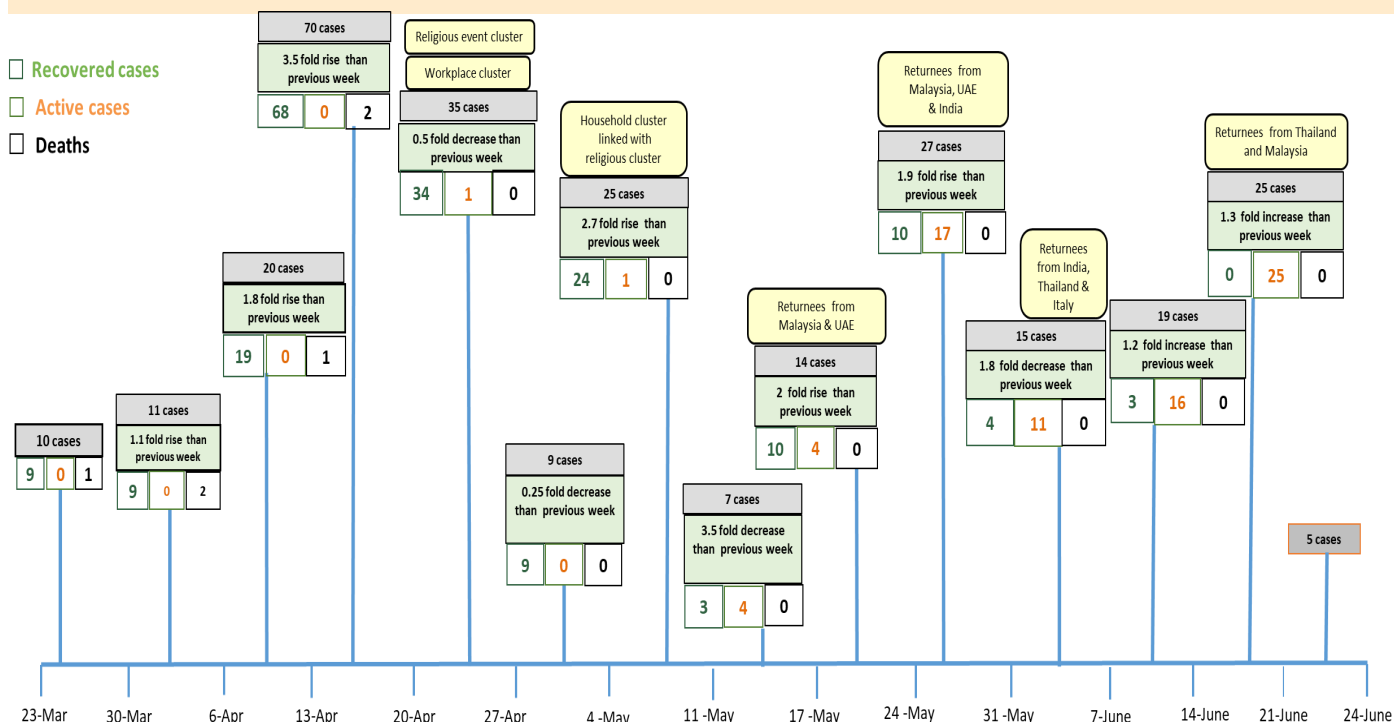
### COVID-19 confirmed cases among tested by date (as of 23.6.2020)



# Timeline of Preparedness and Response to COVID-19 in Myanmar (as of 23.6.2020)



## Summary of new confirmed cases detection after first two cases (as of 23.6.2020)



- Confirmed cases were detected as a peak in the 4th week after first confirmed cases due to the religious event cluster.
- Confirmed cases were decreased but still raised than the first 3 weeks due to the religious event cluster and workplace cluster.
- There were an increased in numbers of cases in the 7th week after the first two cases due to the household cluster linked with a religious cluster.
- Confirmed cases were detected by a nearly two-fold rise in the 9th and 10th weeks after the first two cases because of returnees coming back by relief flights.