



# Ministry of Health and Sports (Myanmar)

## Department of Public Health

### Central Epidemiology Unit

(4 July 2020)

#### Coronavirus Disease 2019 (COVID-19)

Situation Report - 88

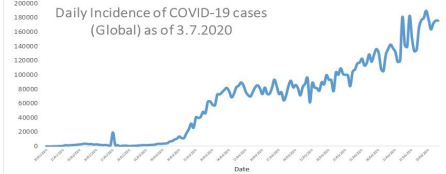
Data as reported by States and Regions by 11:00 PM MST 3 July 2020

**Global Situation**  
(WHO situation report - 165)  
data as of 14:30 MST 3 July 2020

**Confirmed cases**  
**10,710,005**

**Deaths**  
**517,877**

**Case Fatality Rate**  
**4.8 %**



#### Myanmar Situation

**Total tested**  
**81,977**

**Confirmed cases**  
**306**

**Negative**  
**81,671**

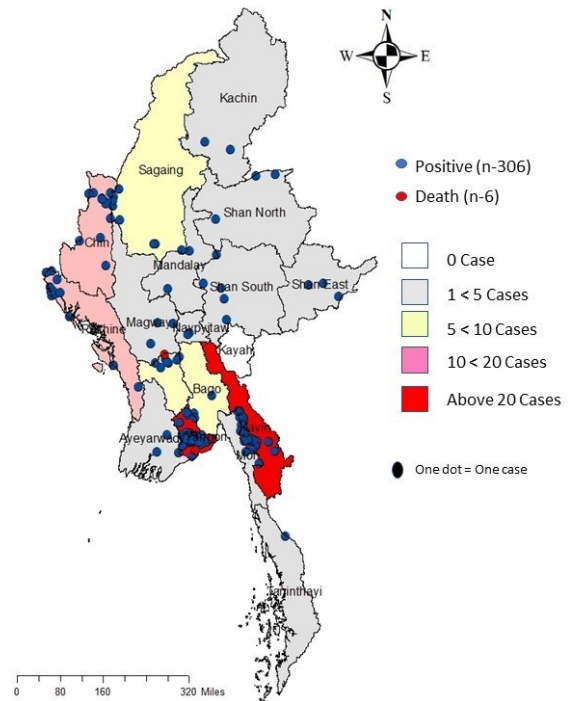
**Recovered**  
**240**  
78.4 % of confirmed cases

**Active**  
**60**  
19.6 % of confirmed cases

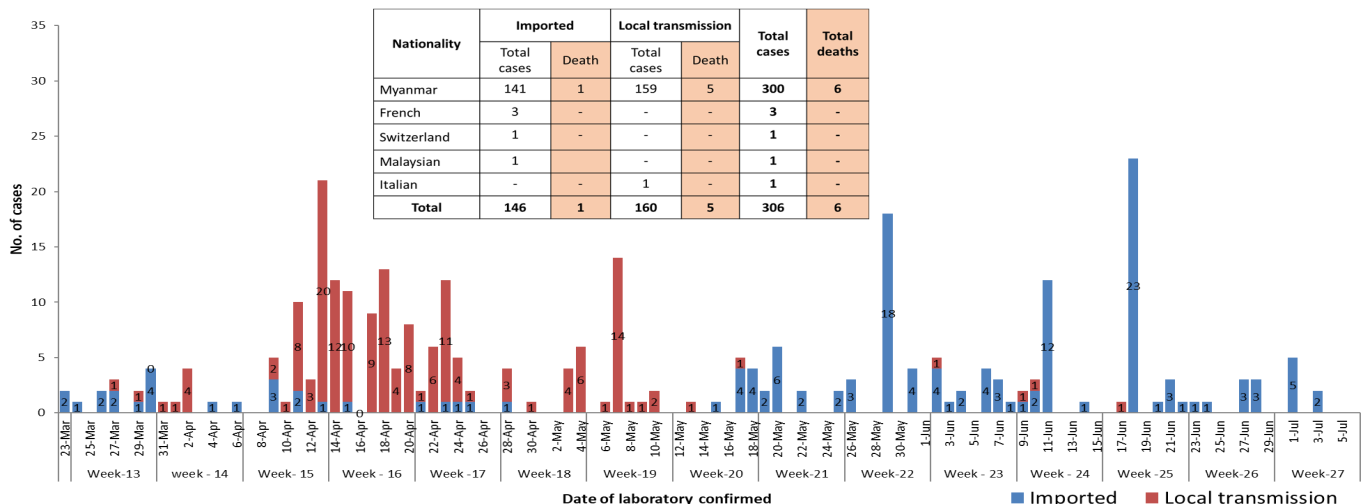
**Death**  
**6**  
1.9 % of confirmed cases

No.	State/Region	COVID -19 Confirmed case	Recovered	Deaths
1	Yangon	213( 2 New)	172(3 New)	5
2	Kayin	26	13	-
3	Rakhine	12	5	-
4	Chin	10	9	-
5	Sagaing	9	8	-
6	Bago	9	7	1
7	Shan(South)	4	4	-
8	Mandalay	3	3	-
9	Shan(East)	3	4	-
10	Shan(North)	3	2	-
11	Magway	3	3	-
12	Naypyitaw	2	2	-
13	Ayeyarwaddy	2	2	-
14	Kachin	2	2	-
15	Mon	2	2	-
16	Thanintharyi	1	1	-
17	Kayah	-	-	-
<b>Total</b>		<b>306( 2 New)</b>	<b>240(3 New)</b>	<b>6</b>

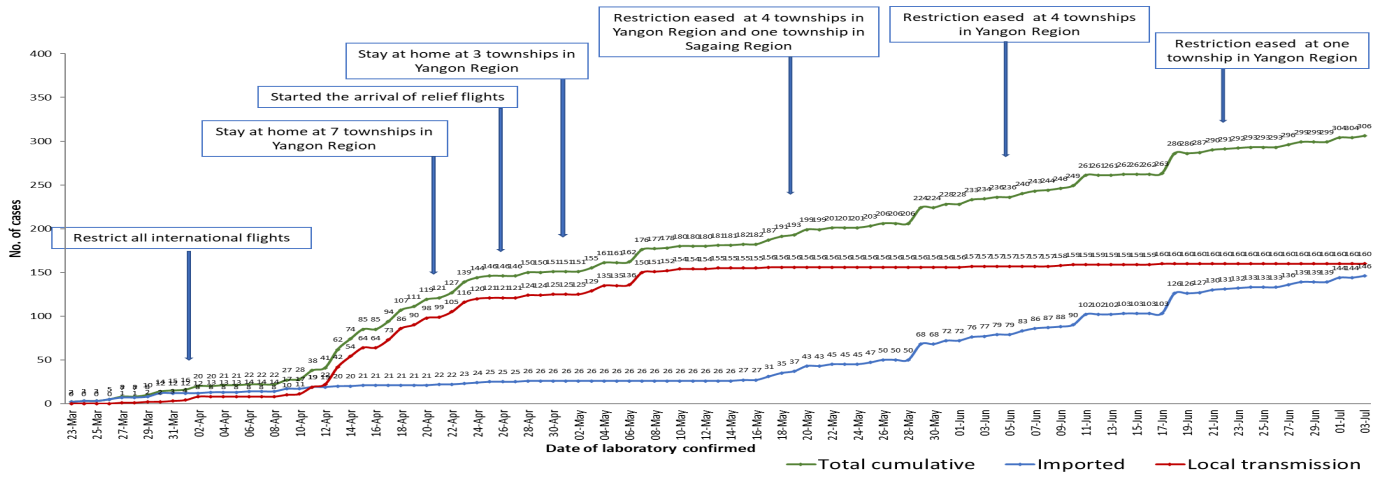
Map showing COVID-19 laboratory confirmed cases



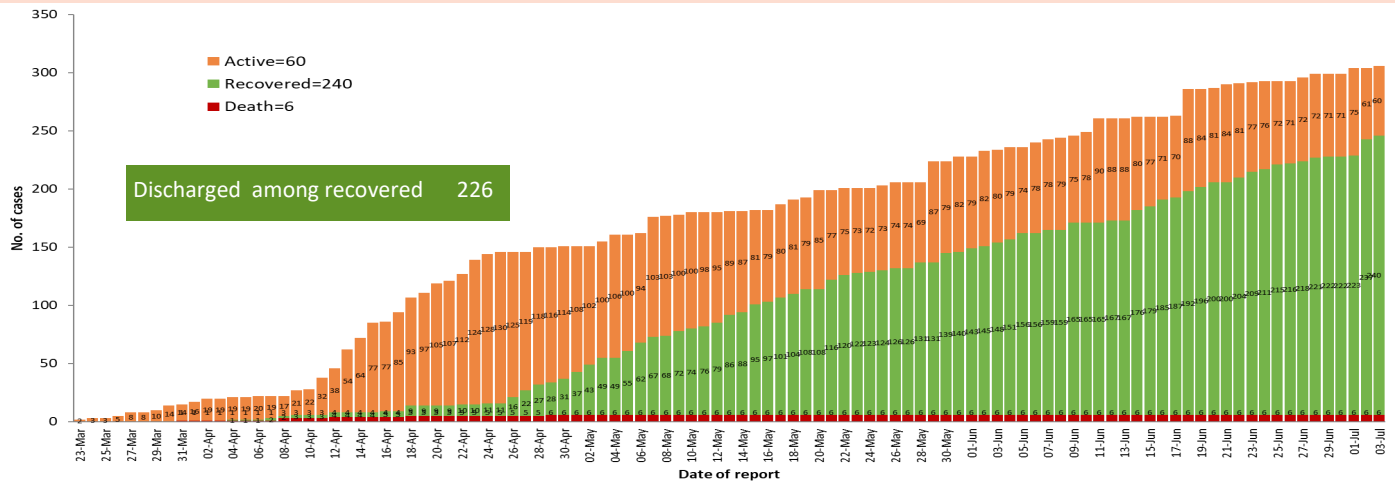
COVID-19 confirmed cases by types of transmissions (as of 3.7.2020, 11:00 pm) n=306



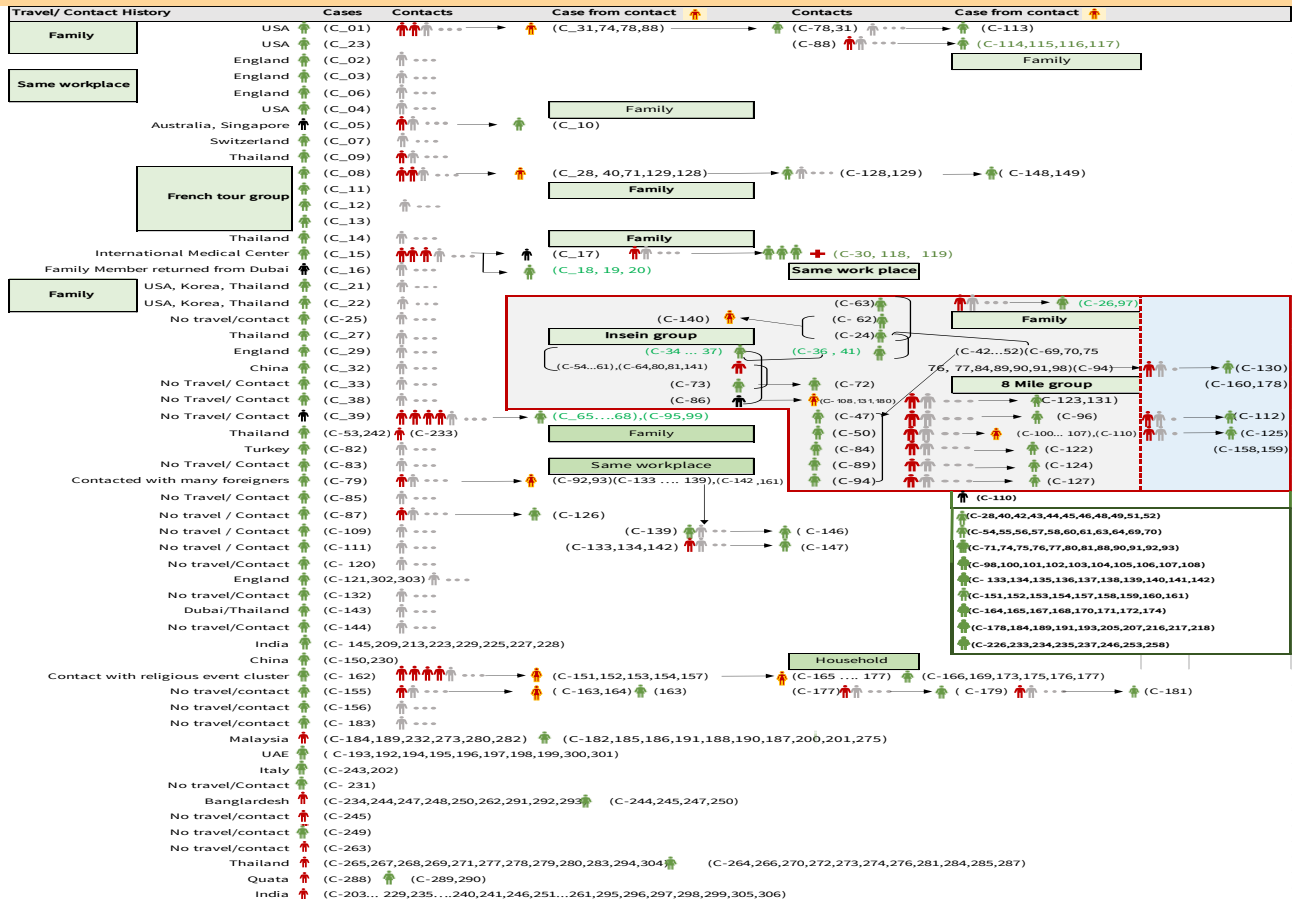
## Total laboratory confirmed cases by date (as of 3.7.2020, 11:00 pm), n= 306



## Cumulative Number of active confirmed cases, recovered and deaths (23.3.2020 – 3.7.2020), n (cumulative)=306



## Summary of COVID-19 confirmed cases (as of 3.7.2020), n (contacts)= 5,624



## Summary of current situation

Type	New (2.7.2020-3.7.2020)	Total (on 3.7.2020)
<b>Suspected and Person Under Investigation (PUI)</b>	<b>26</b>	<b>208</b>
<b>Hospital Quarantine</b>	<b>9</b>	<b>50</b>
<b>Facility Quarantine</b>	<b>954</b>	<b>23,552</b>

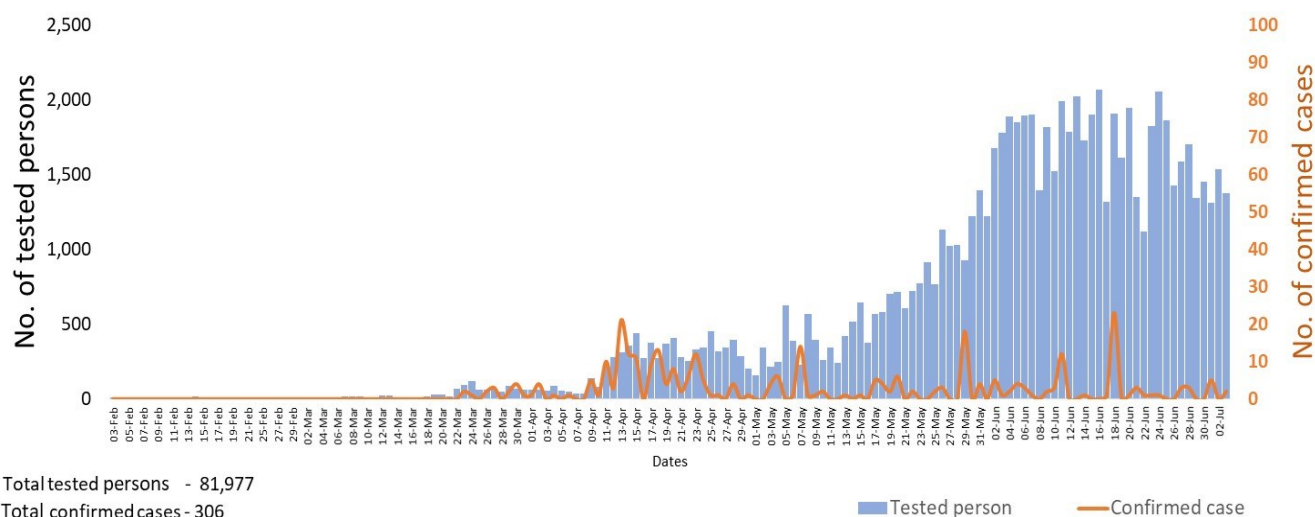
Person under Investigation (PUI) by State/Region hospitals (31.1.2020 – 3.7.2020) n= 6,053

No.	State/Region	PUI
1.	Yangon	3,093
2.	Mandalay	1,200
3.	Kayin	241
4.	Mon	227
5.	Shan (N)	203
6.	Magway	201
7.	Bago	180
8.	Shan (E)	115
9.	Ayeyarwaddy	102
10.	Shan (S)	99
11.	Sagaing	88
12.	Kayah	76
13.	Rakhine	68
14.	Naypyitaw	63
15.	Thanintharyi	62
16.	Kachin	35
17.	Chin	26
<b>Total</b>		<b>6,079</b>

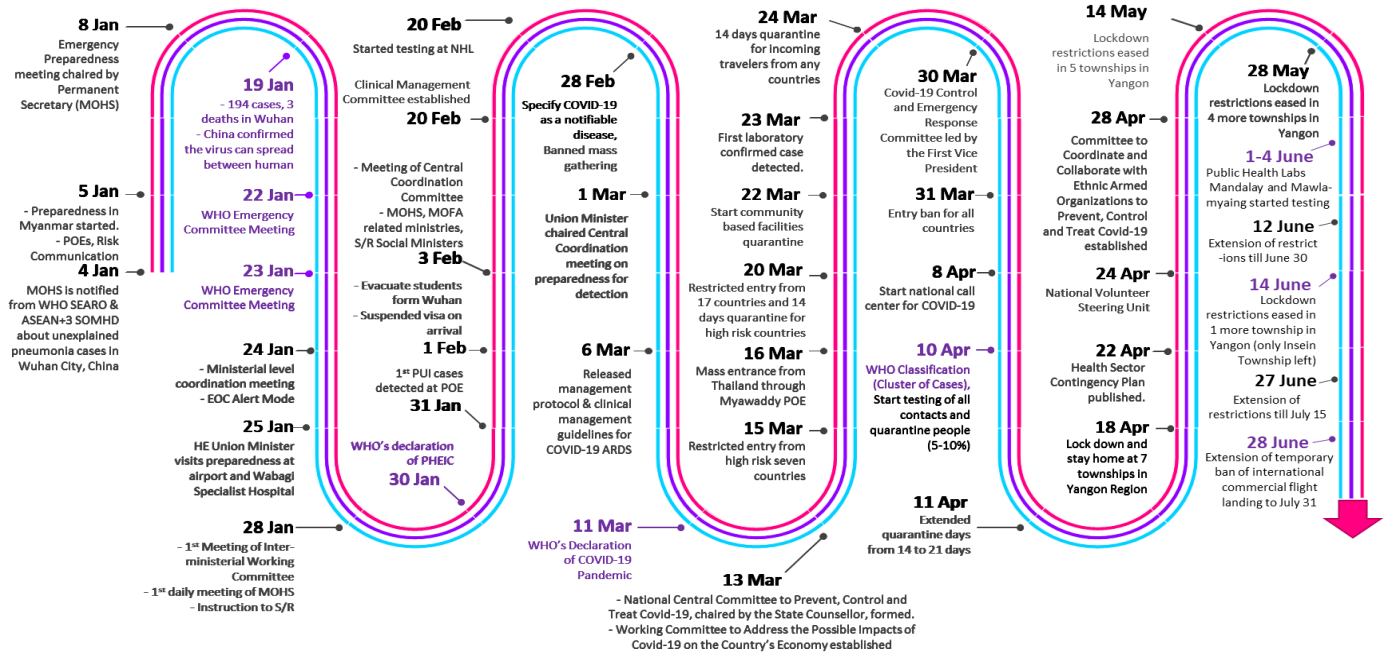
No. of Facility Quarantine sites and Quarantined people on 3.7.2020

No.	State/Region	No. of facilities	Total no. of quarantine
1.	Yangon	83	4,158
2.	Bago	278	2,970
3.	Kayin	424	2,564
4.	Magway	2,581	2,449
5.	Mon	245	2,262
6.	Kachin	414	1,516
7.	Mandalay	117	1,441
8.	Sagaing	969	1,199
9.	Rakhine	323	1,136
10.	Tanintharyi	189	970
11.	Shan South	118	890
12.	Ayeyarwaddy	199	808
13.	Naypyitaw	5	543
14.	Shan North	245	242
15.	Shan East	11	183
16.	Chin	20	133
17.	Kayah	18	88
<b>Total</b>		<b>6,239</b>	<b>23,552</b>

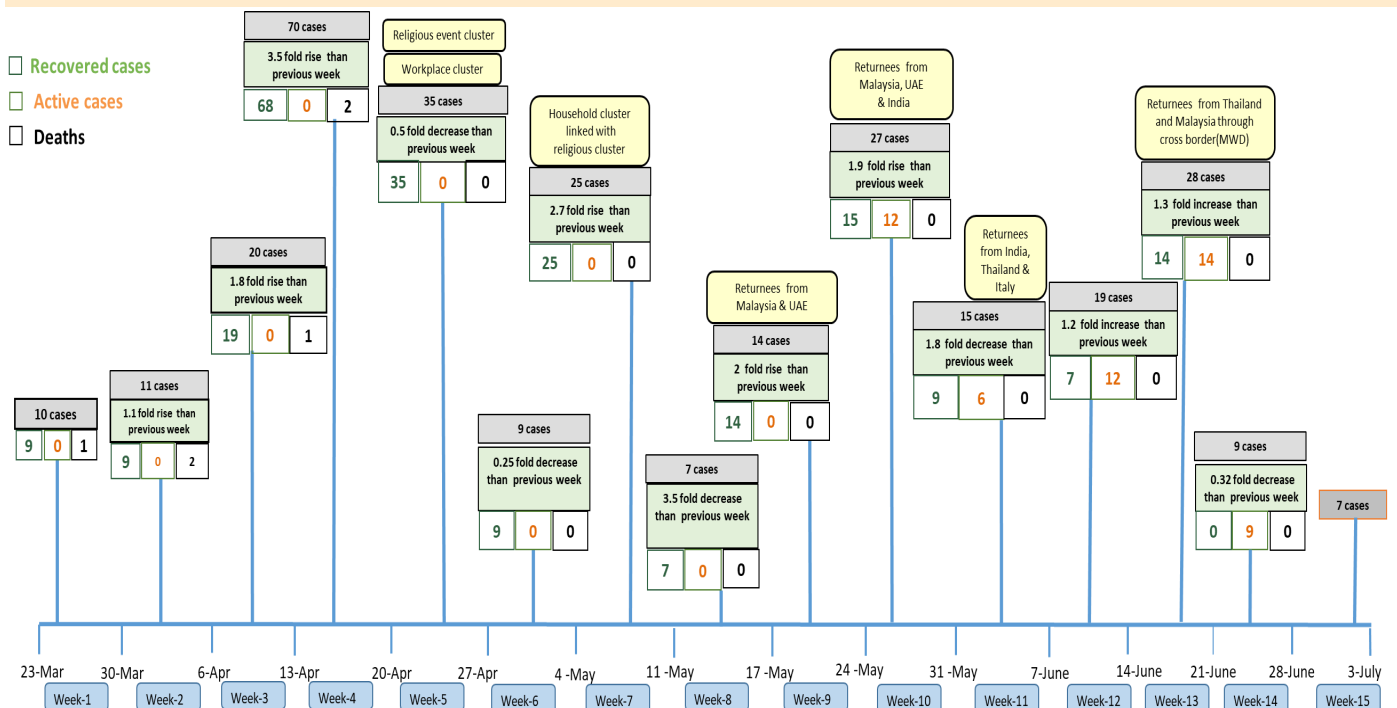
## COVID-19 confirmed cases among tested by date (as of 3.7.2020)



# Timeline of Preparedness and Response to COVID-19 in Myanmar (as of 3.7.2020)



## Summary of new confirmed cases detection after first two cases (as of 3.7.2020)



- Confirmed cases were detected as a peak in the 4th week after first confirmed cases due to the religious event cluster.
- Confirmed cases were decreased but still raised than the first 3 weeks due to the religious event cluster and workplace cluster.
- There were an increased in numbers of cases in the 7th week after the first two cases due to the household cluster linked with a religious cluster.
- Confirmed cases were detected by a nearly two-fold rise in the 9th and 10th weeks after the first two cases because of returnees coming back by relief flights.