



Ministry of Health and Sports (Myanmar)

Department of Public Health

Central Epidemiology Unit

(11 July 2020)

Situation Report - 95

Coronavirus Disease 2019 (COVID-19)

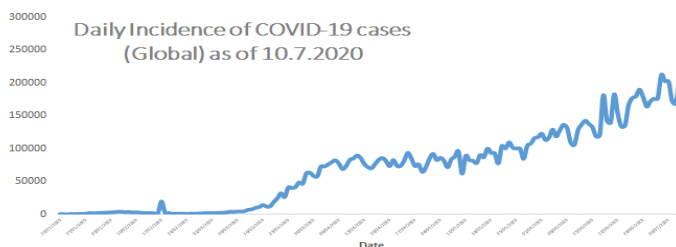
Data as reported by States and Regions by 1:00 AM MST 11 July 2020

Global Situation (WHO situation report - 172) data as of 14:30 MST 10 July 2020

Confirmed cases
12,108,328

Deaths
551,046

Case Fatality Rate
4.5 %



Myanmar Situation

Total Tested
91,479

Confirmed Cases
326

Negative
91,153

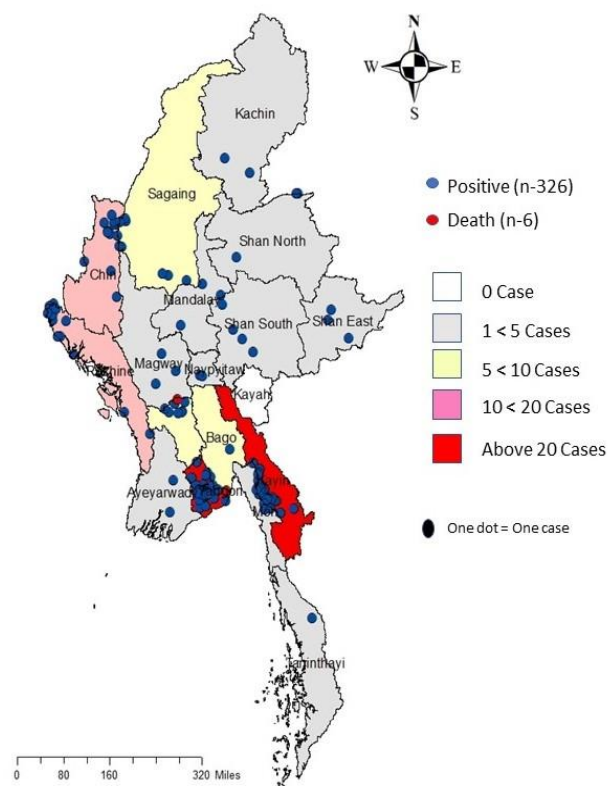
Recovered
260
79.7% of Confirmed cases

Active
60
18.4% of Confirmed cases

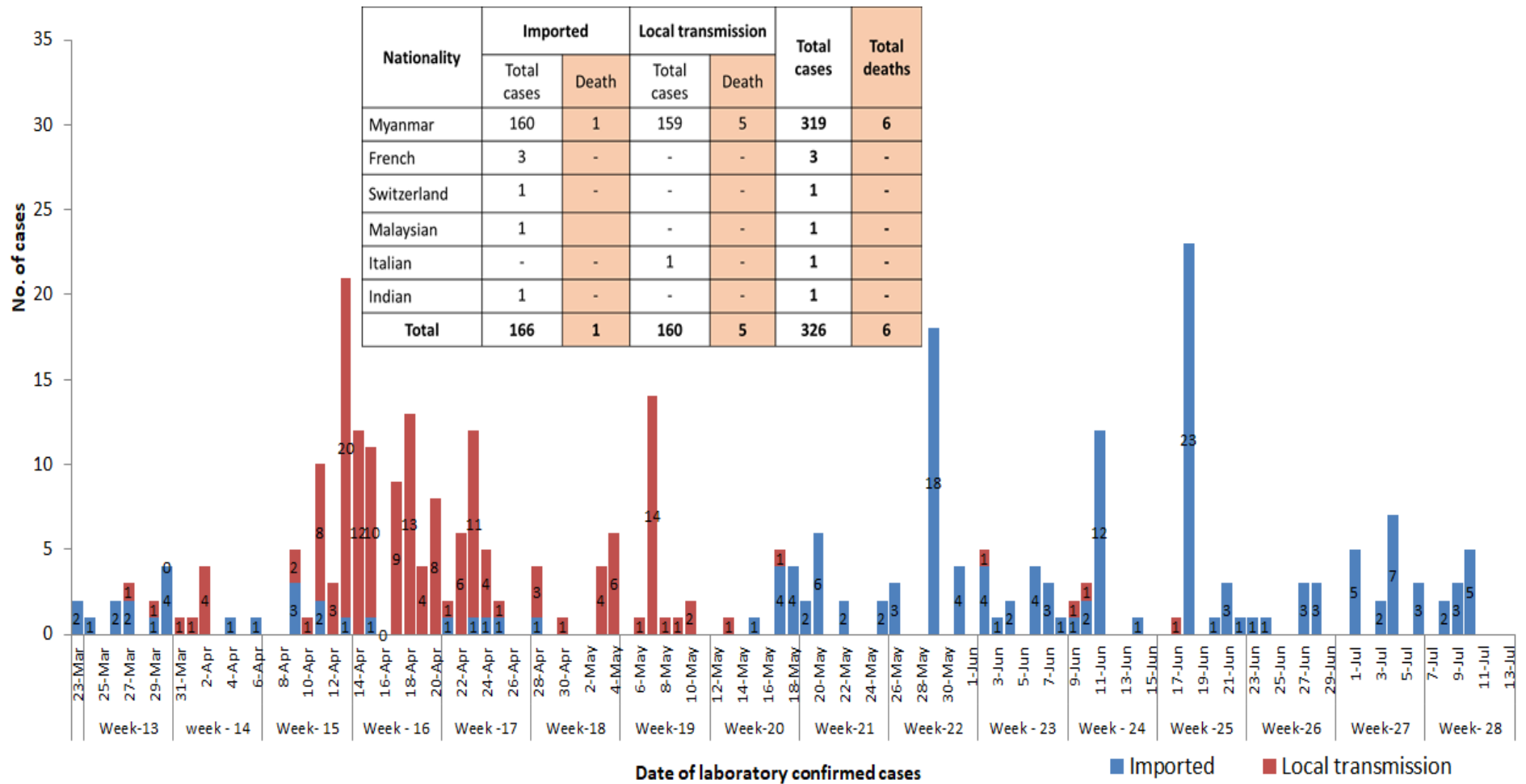
Death
6
1.8% of Confirmed cases

No	State/Region	COVID –19 Confirmed case	Recovered	Deaths
1	Yangon	232(3 New)	180(2 New)	5
2	Kayin	26	21(1 New)	-
3	Rakhine	14 (2 New)	9(1 New)	-
4	Chin	11	10	-
5	Sagaing	9	8	-
6	Bago	9	7	1
7	Shan (South)	4	4	-
8	Mandalay	3	3	-
9	Shan (East)	3	3	-
10	Shan (North)	3	3	-
11	Magway	3	3	-
12	Naypyitaw	2	2	-
13	Ayeyarwaddy	2	2	-
14	Kachin	2	2	-
15	Mon	2	2	-
16	Thanintharyi	1	1	-
17	Kayah	-	-	-
Total		326(5 New)	260 (4 New)	6

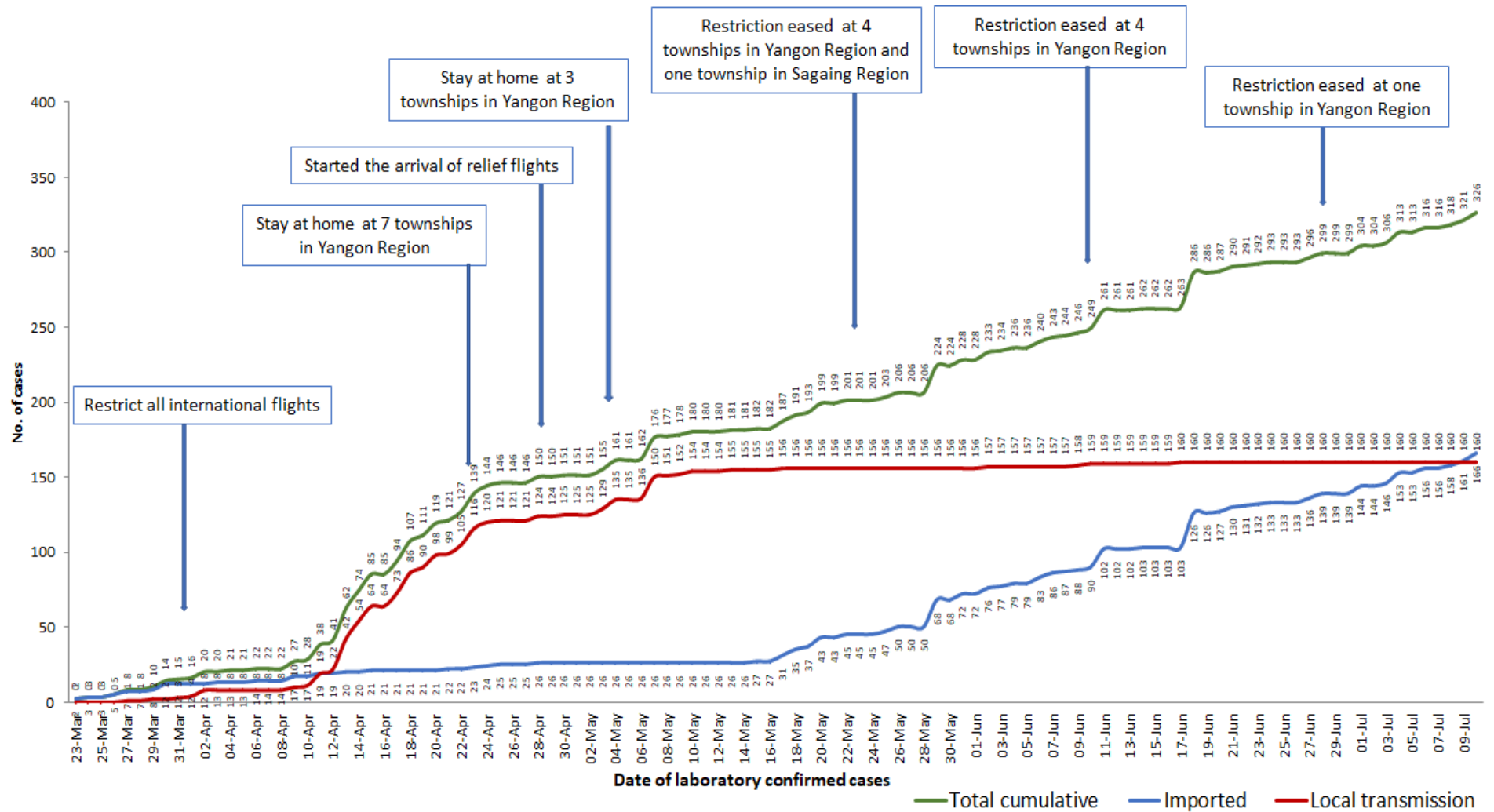
Map showing COVID-19 laboratory confirmed cases



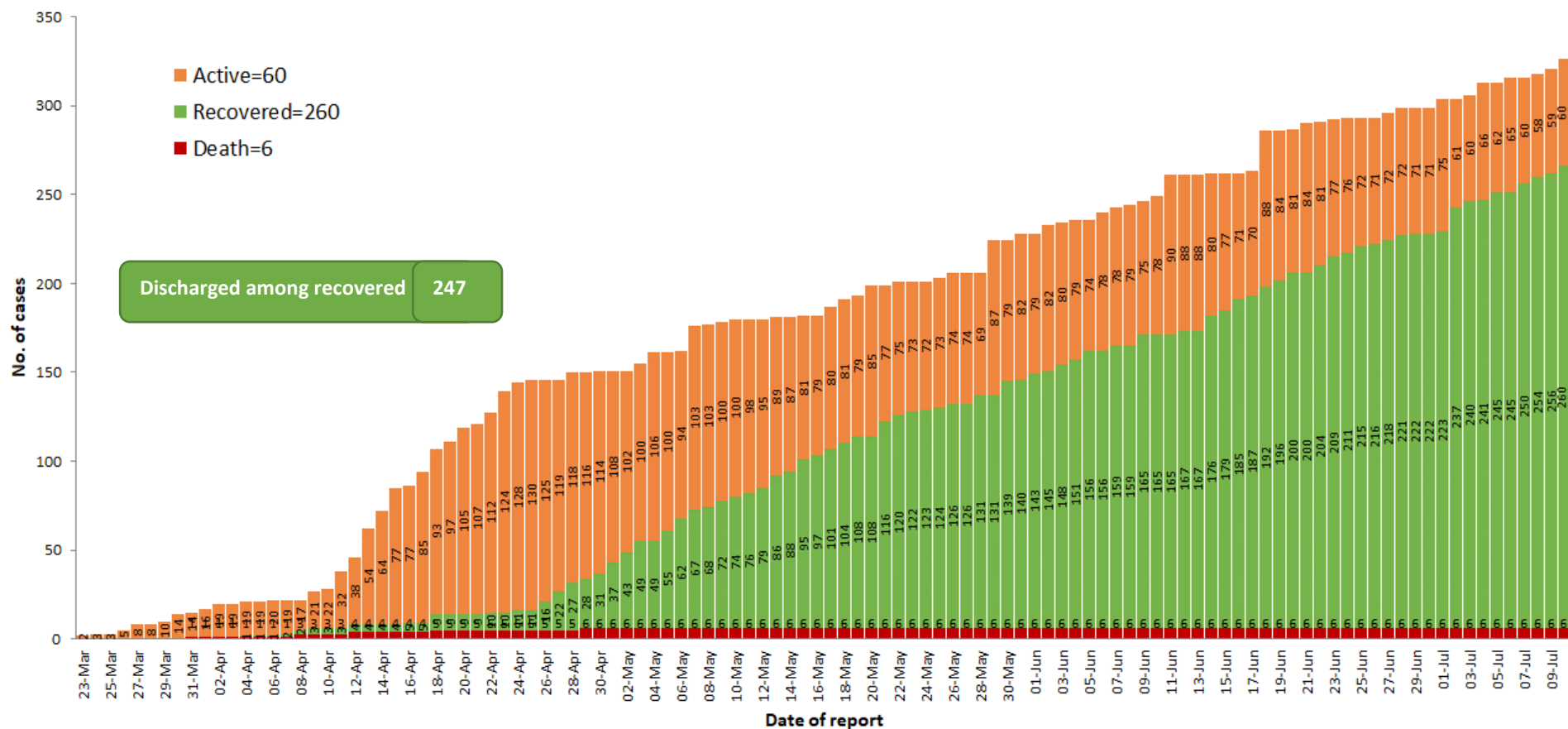
COVID-19 confirmed cases by types of transmissions (as of 11.7.2020, 1:00 am) n=326



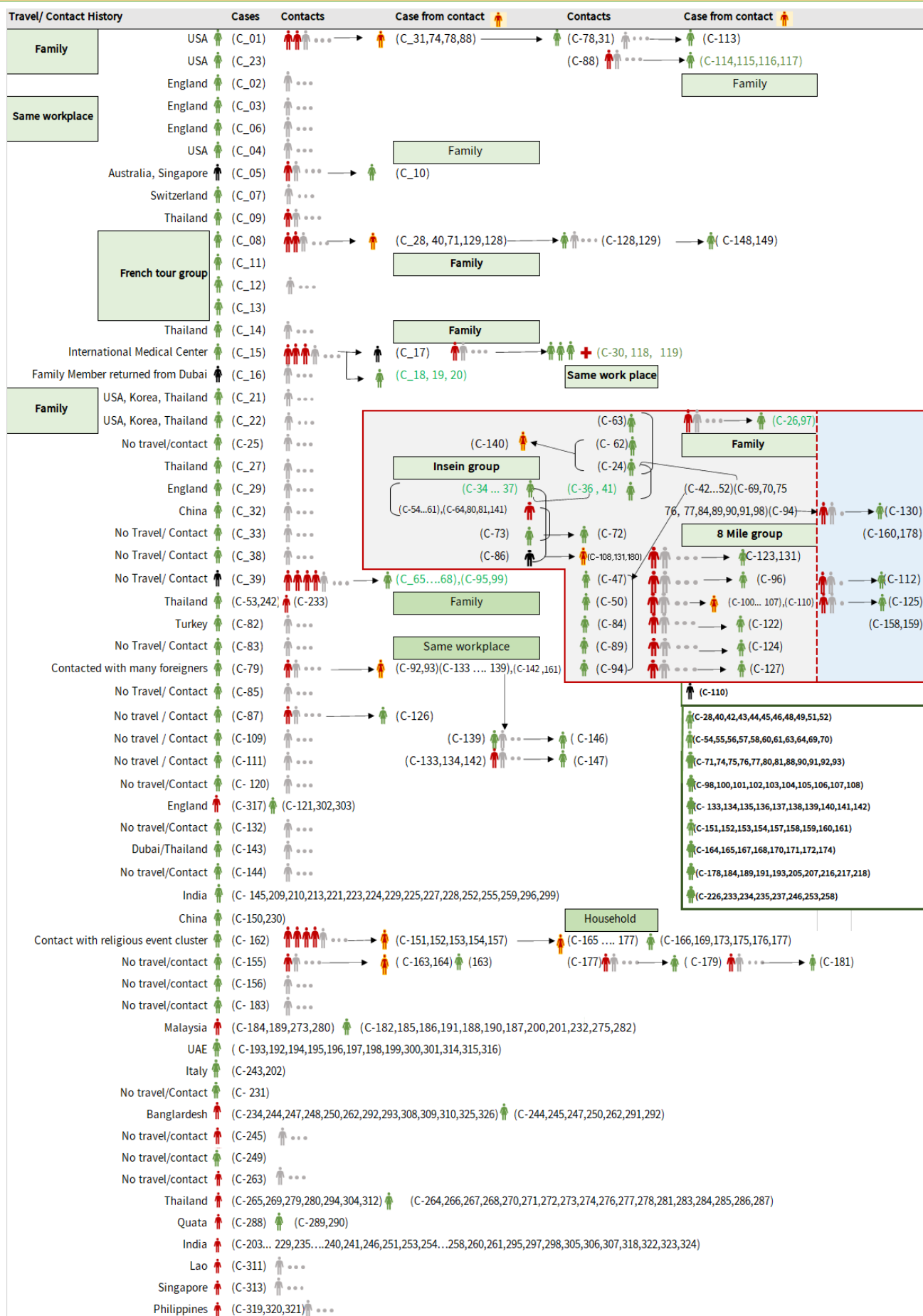
Total laboratory confirmed cases by date (as of 11.7.2020, 1:00 am), n= 326



Cumulative Number of active confirmed cases, recovered and deaths (23.3.2020 – 10.7.2020), n (cumulative)=326



Summary of COVID-19 confirmed cases (as of 10.7.2020), n (contacts)= 5,718



Summary of current situation		
Type	New (9.7.2020-10.7.2020)	Total (on 10.7.2020)
Suspected and Person Under Investigation (PUI)	28	222
Hospital Quarantine	7	60
Facility Quarantine	1,262	23,441

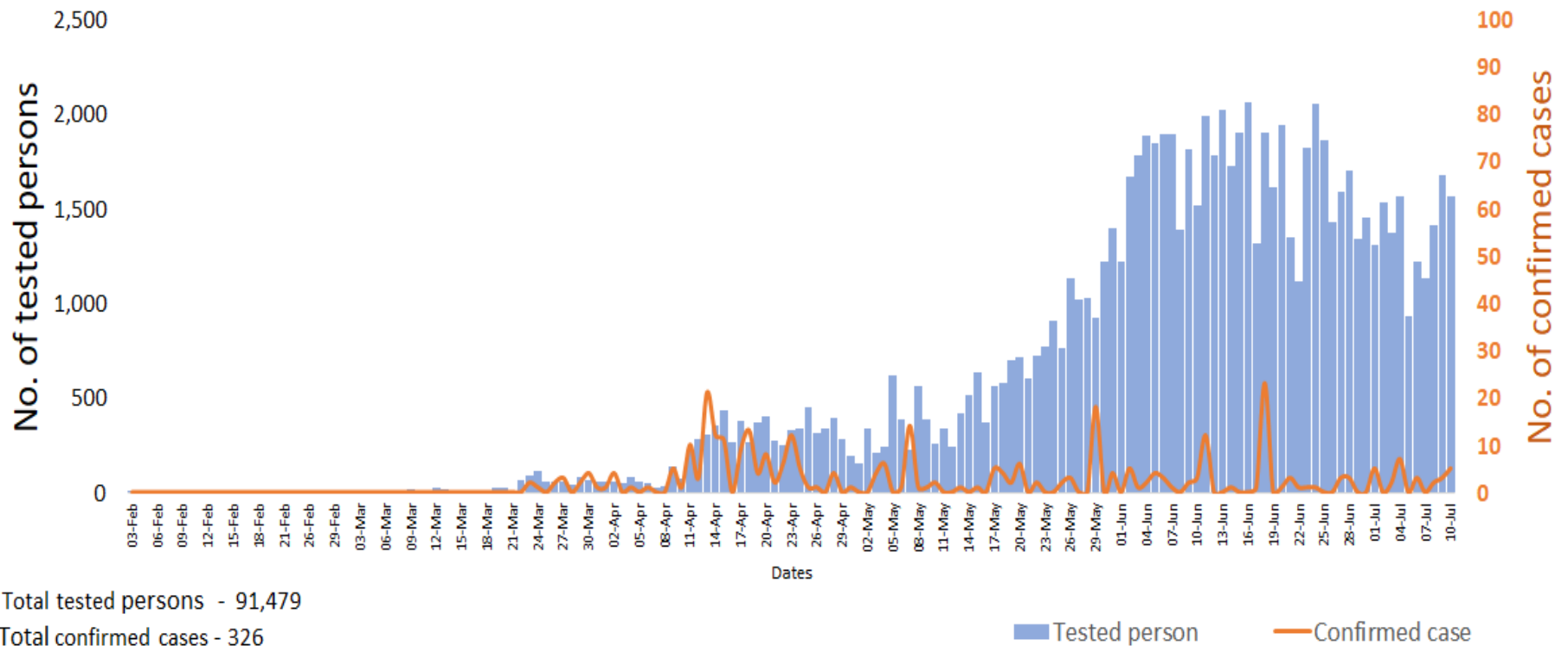
Person under Investigation (PUI) by State/Region hospitals (31.1.2020 – 10.7.2020) n= 6,302

No.	State/Region	PUI
1	Yangon	3,198
2	Mandalay	1,259
3	Kayin	253
4	Mon	239
5	Shan (N)	215
6	Magway	206
7	Bago	180
8	Shan (E)	120
9	Ayeyarwaddy	102
10	Shan (S)	99
11	Sagaing	89
12	Kayah	80
13	Rakhine	68
14	Thanintharyi	68
15	Naypyitaw	63
16	Kachin	36
17	Chin	27
Total		6,302

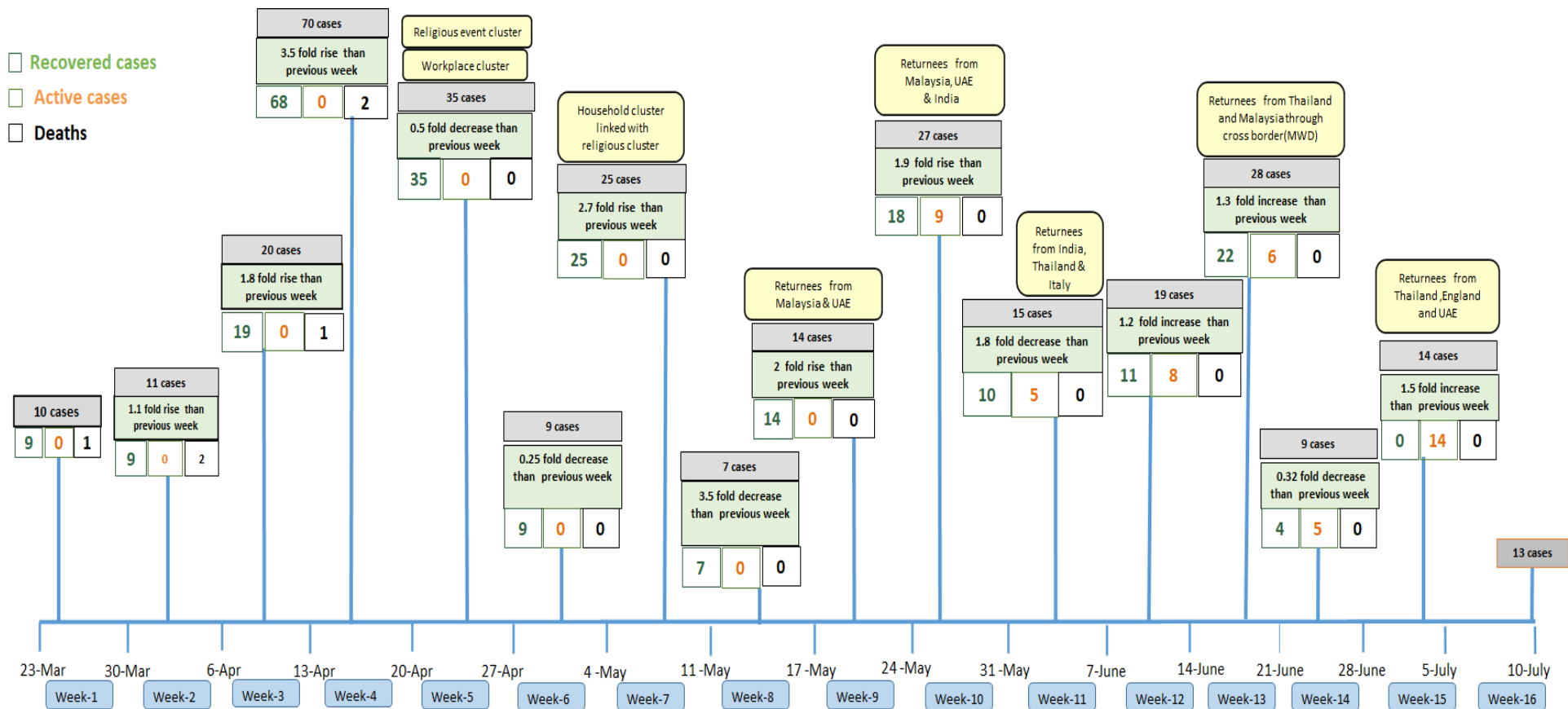
No. of Facility Quarantine sites and Quarantined people on 10.7.2020

No.	State/Region	No. of facilities	Total no. of quarantine
1	Yangon	69	4,068
2	Bago	282	3,441
3	Kayin	367	2,657
4	Mon	255	2,595
5	Magway	2,571	2,138
6	Mandalay	112	1,317
7	Tanintharyi	189	1,246
8	Sagaing	969	1,240
9	Kachin	418	1,099
10	Rakhine	290	1016
11	Shan South	117	871
12	Ayeyarwaddy	169	811
13	Naypyitaw	2	429
14	Shan North	318	189
15	Chin	17	164
16	Kayah	18	123
17	Shan East	11	37
Total		6,174	23,441

COVID-19 confirmed cases among tested by date (as of 10.7.2020)

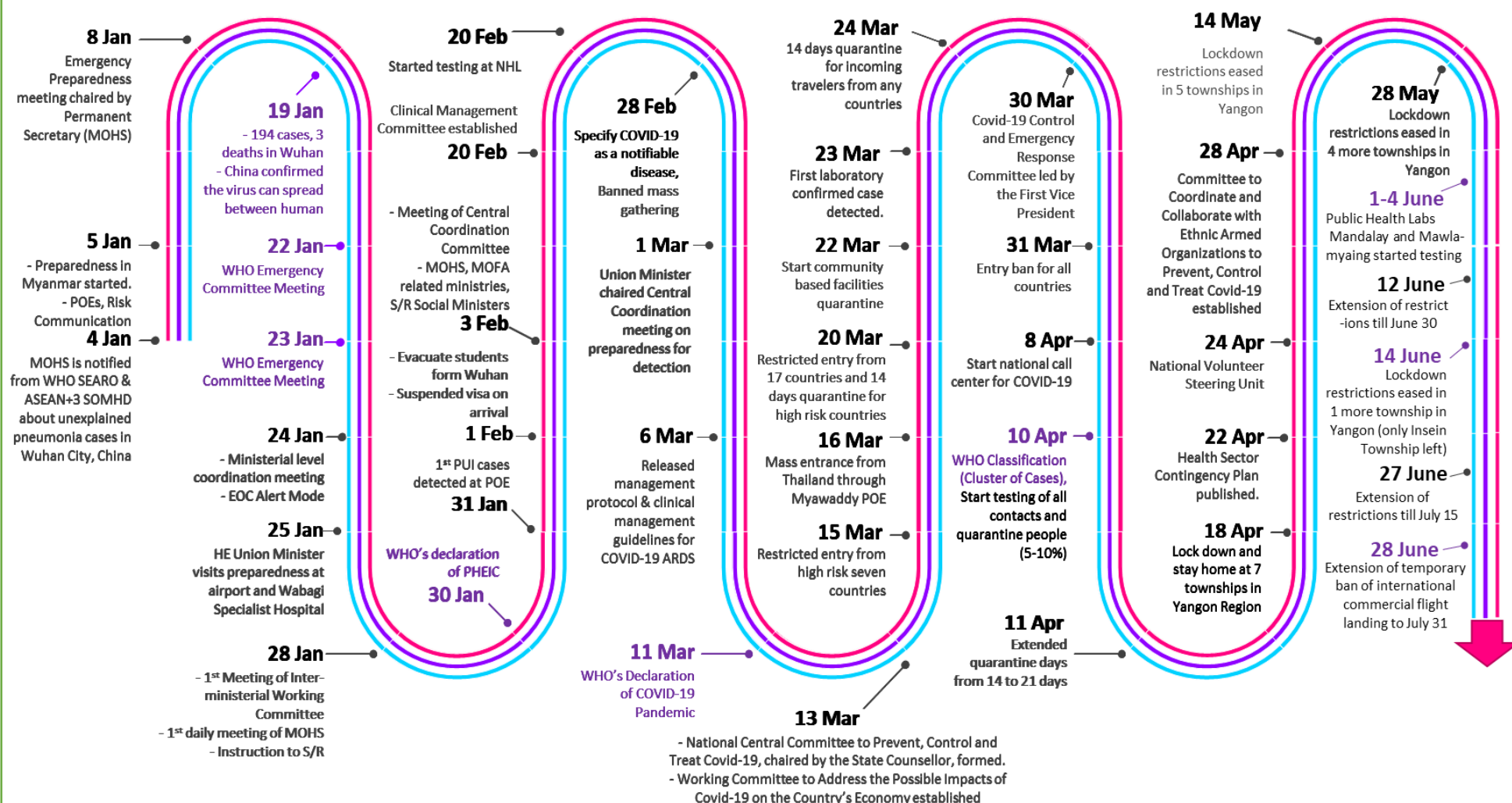


Summary of new confirmed cases detection after first two cases (as of 10.7.2020)



- Confirmed cases were detected as a peak in the 4th week after first confirmed cases due to the religious event cluster.
- Confirmed cases were decreased but still raised than the first 3 weeks due to the religious event cluster and workplace cluster.
- There were an increased in numbers of cases in the 7th week after the first two cases due to the household cluster linked with a religious cluster.
- Confirmed cases were detected by a nearly two-fold rise in the 9th and 10th weeks after the first two cases because of returnees coming back by relief flights.

Timeline of Preparedness and Response to COVID-19 in Myanmar (as of 10.7.2020)



Hotline Number— 0673 420 268

Data source - CEU, DMS, NHL, PHL (MDY and MLM), DMR, DSGH, State and Region Health Departments