



# Ministry of Health and Sports (Myanmar)

## Department of Public Health

### Central Epidemiology Unit

( 24 April 2020)

Situation Report - 18

### Coronavirus Disease 2019 (COVID-19)

Data as reported by States and Regions by 11:30 PM MST 23 April 2020

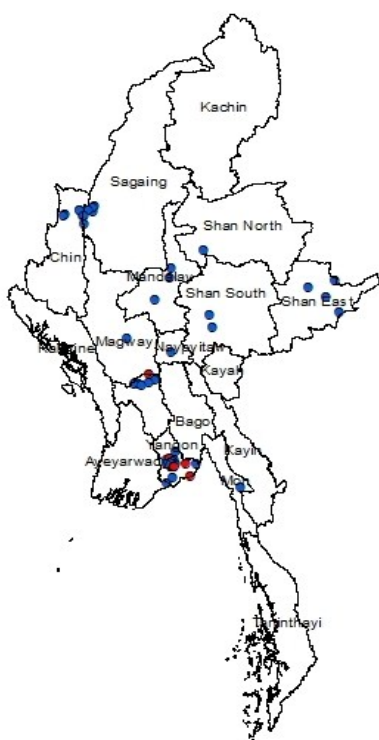
### Global Situation

(according to WHO situation report - 94, data as of 14:30 MST 23 April 2020)

Confirmed cases	Deaths
2,544,792	175,694

### Myanmar

Map showing COVID-19 laboratory confirmed cases

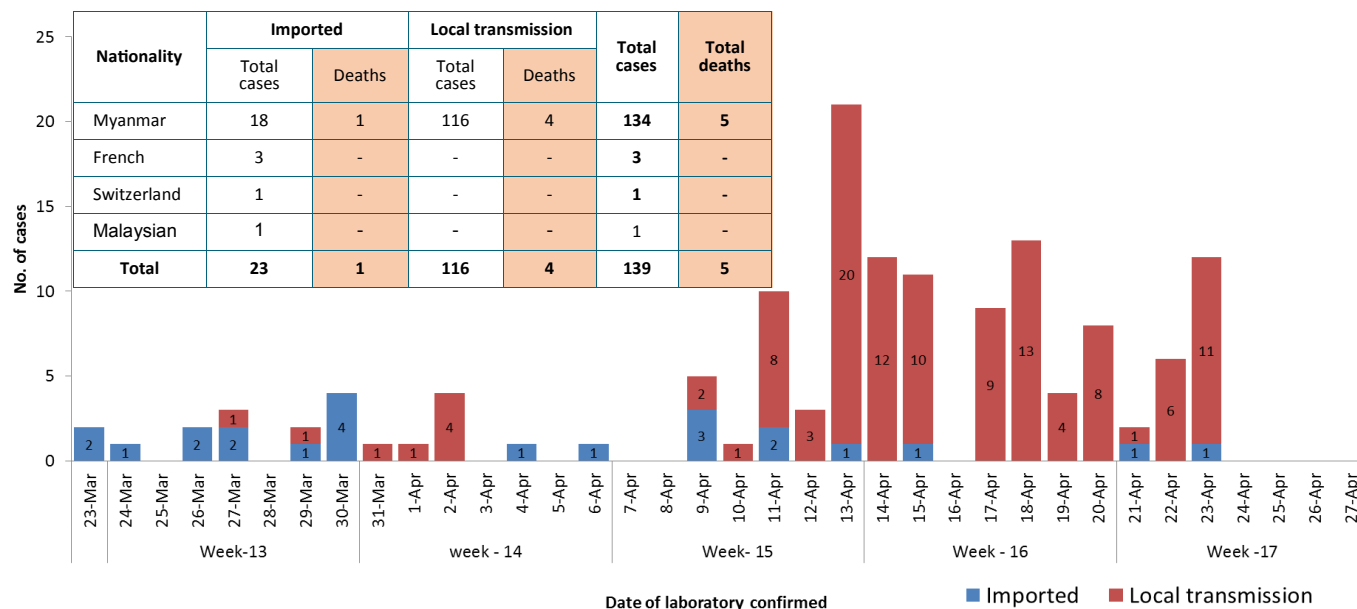


Total tested Specimen for COVID-19  
(as of 23-4-2020,11:30 PM)

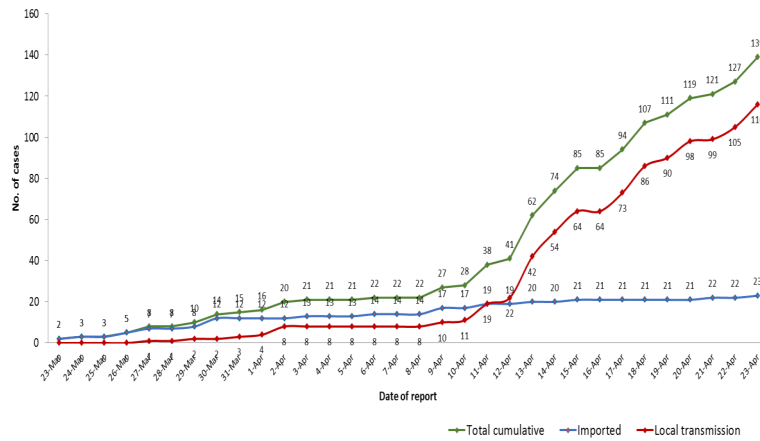
5,774

Negative		Positive	Recovered	Deaths
5,635		139	9	5
No.	State/Region	COVID –19 Confirmed case	Recovered	Deaths
1.	Yangon	109 ( 11 new)	7	4
2.	Bago	7	-	1
3.	Sagaing	6	-	-
4.	Chin	5	-	-
5.	Shan(East)	3		
6.	Mandalay	3 ( 1 new)	1	-
7.	Shan(South)	2	-	-
8.	Naypyitaw	1	1	-
9.	Shan(North)	1	-	-
10.	Mon	1	-	-
11.	Magway	1		
12.	Kayar	-	-	-
13.	Rakhine	-	-	-
14.	Ayeyarwaddy	-	-	-
15.	Kayin	-	-	-
16.	Kachin	-	-	-
17.	Thanintharyi	-	-	-
Total		139(12 new )	9	5

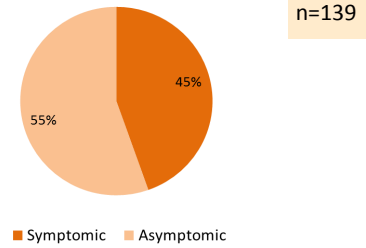
COVID-19 confirmed cases by date of laboratory confirmation (as of 23-4-2020,11:30 PM) n= 139



## Total laboratory confirmed cases by date(as of 23.4.2020, 11:30 PM)



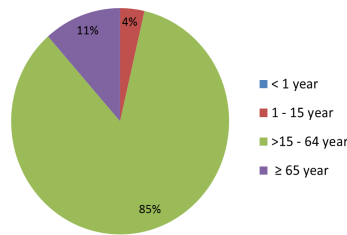
## Presentation of COVID-19 confirmed cases (as of 23.4.2020)



SN	Type of cluster	No. of clusters	# of Cases
1	Family cluster	8	24
2	Work place cluster	3	16
3	Religious event cluster	1	63

## COVID-19 confirmed cases by age group (as of 23.4.2020),n=139

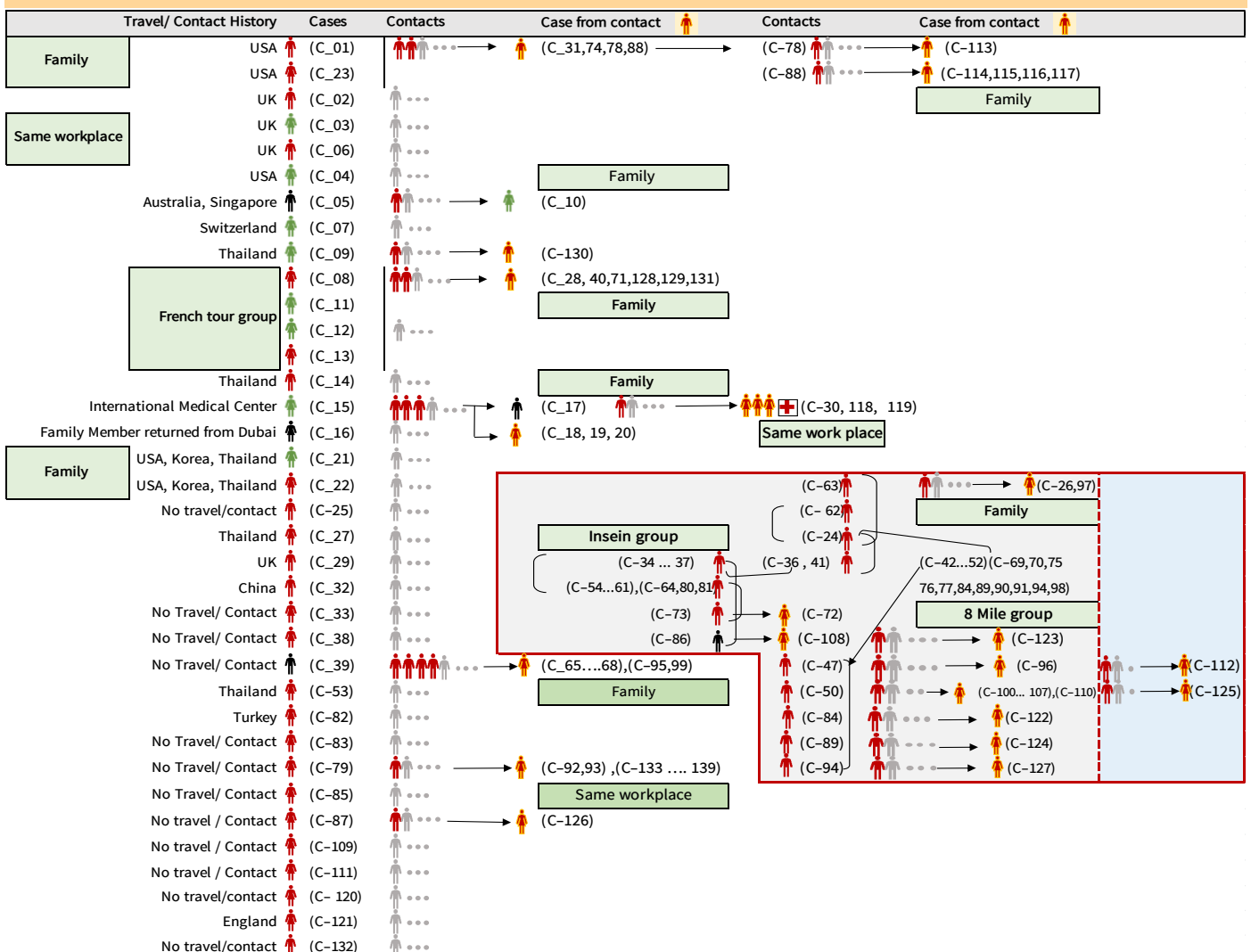
- Minimum age - 1 year 6 month
- Maximum age - 85 year
- Mean age - 41 year
- Medium age - 38 year



## COVID-19 confirmed cases among PUI and Quarantine (as of 23.4.2020)

No.	Types of isolation and Quarantine	No. of cases
1.	PUI	56
2.	Facility Quarantine	61
3.	Home Quarantine	17
4.	Hotel Quarantine	3
5.	Hospital Quarantine	2
Total		139

## Summary of COVID-19 confirmed cases (as of 23-4-2020) ,n= 2,810



## Summary of situation (22.4.2020 – 23.4.2020)

Type	New	Total
Suspected and Person Under Investigation (PUI)	107	2,440
Hospital Quarantine	26	167
Facility Quarantine	3,077	40,813

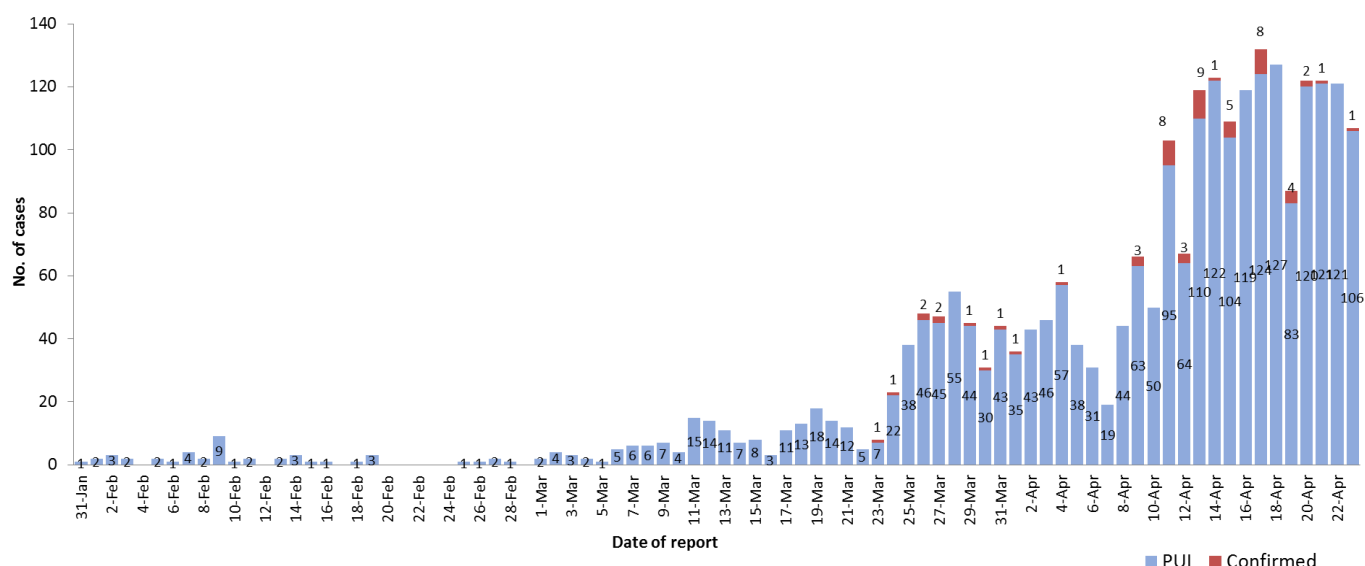
Person under Investigation (PUI) by State/Region hospitals (31.1.2020 – 23.4.2020) n=2,440

## Summary of Facility Quarantine List (as of 23.4.2020)

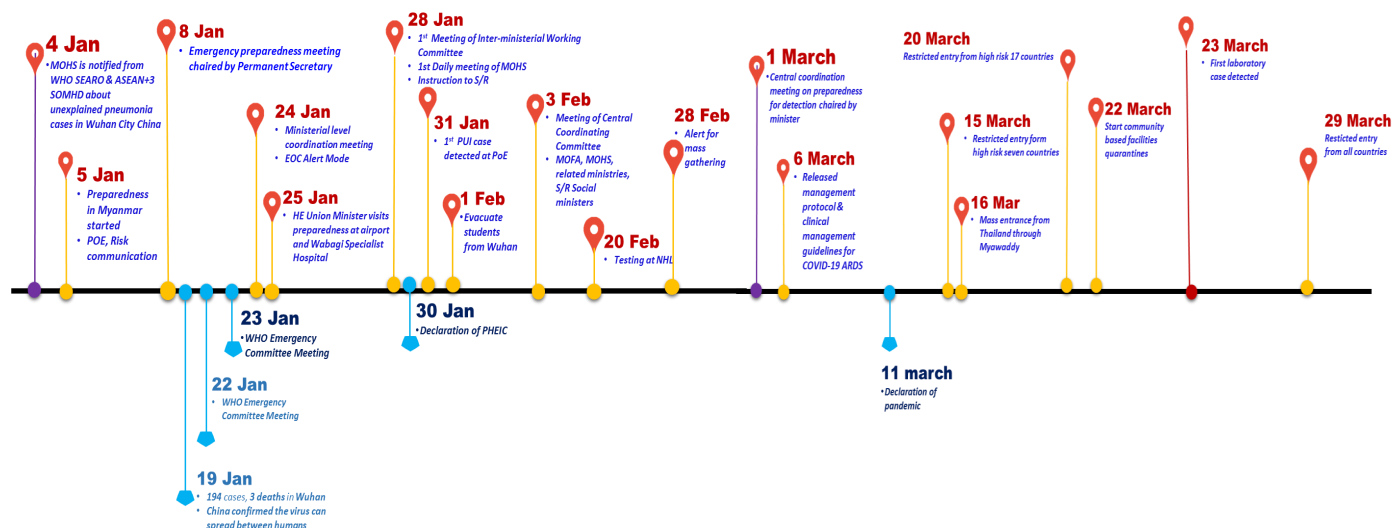
No.	State/Region	PUI
1.	Yangon	1,192
2.	Mandalay	331
3.	Bago	134
4.	Shan (N)	101
5.	Magway	96
6.	Kayin	81
7.	Mon	78
8.	Shan (E)	61
9.	Ayeyarwaddy	61
10.	Kayah	57
11.	Shan (S)	55
12.	Naypyitaw	53
13.	Sagaing	50
14.	Rakhine	34
15.	Tanintharyi	25
16.	Kachin	18
17.	Chin	13
<b>Total</b>		<b>2,440</b>

No.	State/Region	No. of facilities	Total no. of quarantine people
1.	Magway	1,755	7,890
2.	Sagaing	1,633	7,506
3.	Kachin	438	5,266
4.	Bago	566	3,499
5.	Mandalay	584	3,061
6.	Ayeyarwaddy	408	2,109
7.	Shan (N)	271	2,076
8.	Rakhine	162	1,796
9.	Shan (E)	39	1,641
10.	Shan (S)	183	1,265
11.	Naypyitaw	11	1,178
12.	Kayin	374	1,106
13.	Mon	90	909
14.	Yangon	13	637
15.	Tanintharyi	228	508
16.	Kayah	24	203
17.	Chin	33	163
<b>Total</b>		<b>6,812</b>	<b>40,813</b>

## COVID-19 laboratory confirmed cases among PUI (31.1.2020-23.4.2020), n (PUI)= 2440, n (confirmed)=56



## Preparedness and Response to COVID-19 in Myanmar



### Definition of the term “Contact Person”

(as of 7-4-2020) (Reference – *European Center for Disease Prevention and Control*)

- ⇒ A contact of a COVID-19 case is any person who had contact with a COVID-19 case within a timeframe ranging from 48 hours before the onset of symptoms of the case to 14 days after the onset of symptoms.
- ⇒ If the case had no symptoms, a contact person is defined as someone who had contact with the case within a timeframe ranging from 48 hours before the sample which led to confirmation was taken to 14 days after the sample was taken.

### Classification of contact based on level of exposure

#### High-risk exposure (Close Contact)

A person:

- ◆ having had face-to-face contact with a COVID-19 case within one metre for more than 15 minutes
- ◆ having had physical contact with a COVID-19 case
- ◆ having unprotected direct contact with infectious secretions of a COVID-19 case (e.g. being coughed on)
- ◆ who was in a closed environment (e.g. household, classroom, meeting room, hospital waiting room, etc.) with a COVID-19 case for more than 15 minutes
- ◆ in an aircraft, sitting within two seats (in any direction) of the COVID-19 case, travel companions or persons providing care, and crew members serving in the section of the aircraft where the index case was seated (if severity of symptoms or movement of the case indicate more extensive exposure, passengers seated in the entire section or all passengers on the aircraft may be considered close contacts)
- ◆ A healthcare worker or other person providing care to a COVID-19 case, or laboratory workers handling specimens from a COVID-19 case, without recommended PPE or with a possible breach of PPE

#### Low-risk exposure

A person:

- ◆ having had face-to-face contact with a COVID-19 case within one metre for less than 15 minutes
- ◆ who was in a closed environment with a COVID-19 case for less than 15 minutes
- ◆ travelling together with a COVID-19 case in any mode of transport
- ◆ A healthcare worker or other person providing care to a COVID-19 case, or laboratory workers handling specimens from a COVID-19 case, wearing the recommended PPE