



# Ministry of Health and Sports (Myanmar)

## Department of Public Health

### Central Epidemiology Unit

( 22 June 2020 )

#### Coronavirus Disease 2019 (COVID-19)

Situation Report - 76

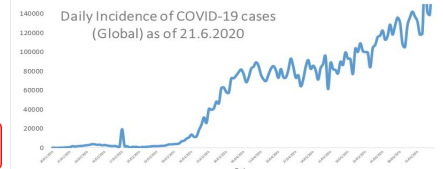
Data as reported by States and Regions by 11:30 PM MST 21 June 2020

**Global Situation**  
(WHO situation report - 153)  
data as of 14:30 MST 21 June 2020

**Confirmed cases**  
**8,708,008**

**Deaths**  
**461,715**

**Case Fatality Rate**  
**5.3 %**



#### Myanmar Situation

**Total tested**  
**63,418**

**Confirmed cases**  
**290**

**Negative**  
**63,128**

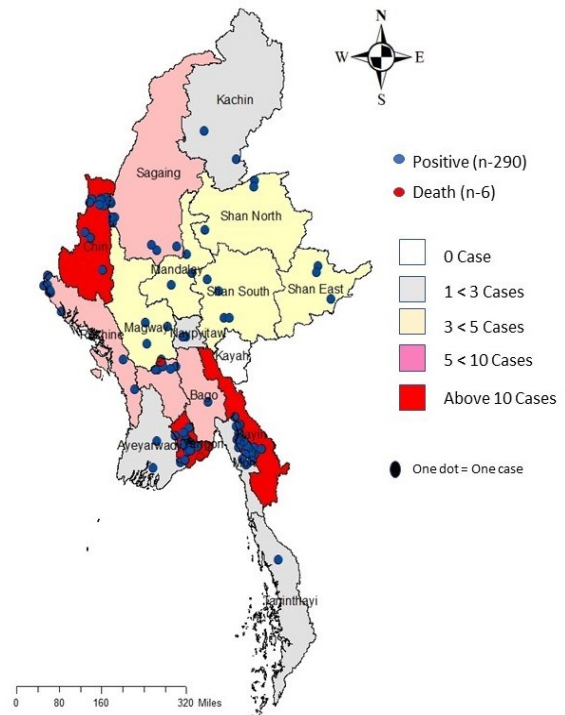
**Recovered**  
**200**  
68.9 % of confirmed cases

**Active**  
**84**  
28.9% of confirmed cases

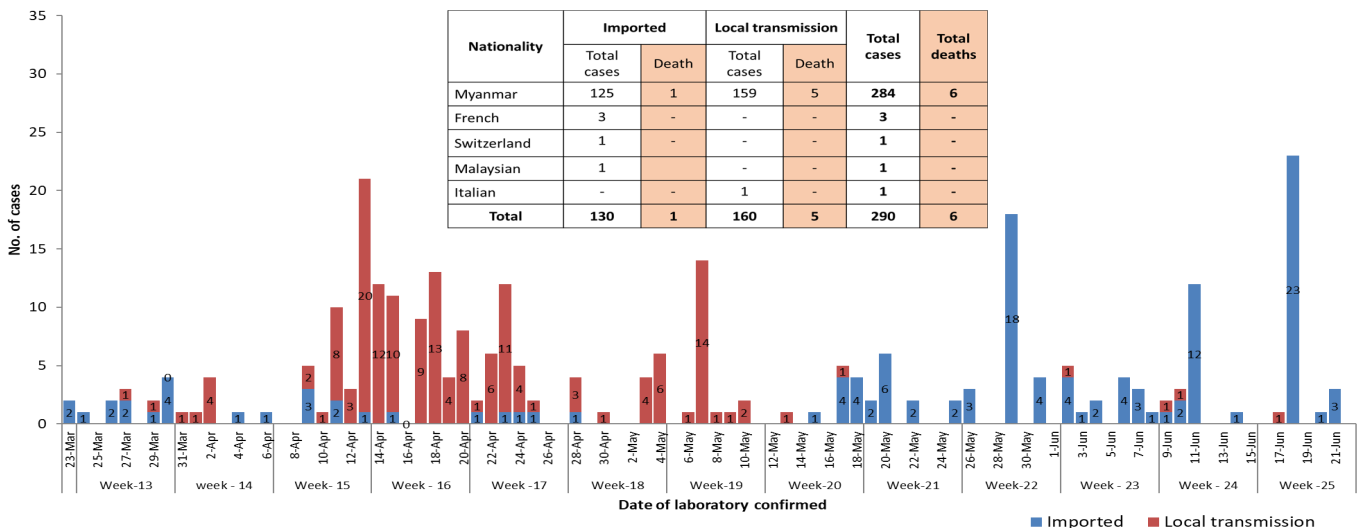
**Death**  
**6**  
2.1% of confirmed cases

No.	State/Region	COVID -19 Confirmed	Recovered	Deaths
1	Yangon	204( 3 New)	157	5
2	Kayin	25	1	-
3	Chin	10	6	-
4	Sagaing	9	7	-
5	Rakhine	9	2	-
6	Bago	8	7	1
7	Shan(South)	4	2	-
8	Mandalay	3	3	-
9	Shan(East)	3	4	-
10	Shan(North)	3	2	-
11	Magway	3	2	-
12	Naypyitaw	2	2	-
13	Ayeyarwaddy	2	2	-
14	Kachin	2	1	-
15	Mon	2	1	-
16	Thanintharyi	1	1	-
17	Kayah	-	-	-
<b>Total</b>		<b>290 (3 New)</b>	<b>200</b>	<b>6</b>

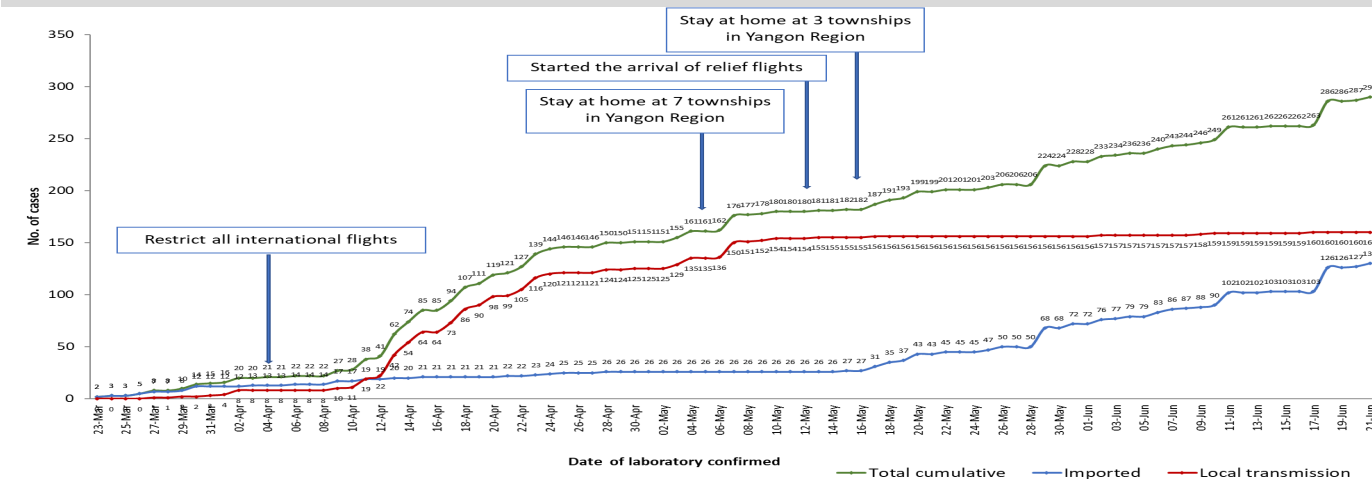
Map showing COVID-19 laboratory confirmed cases



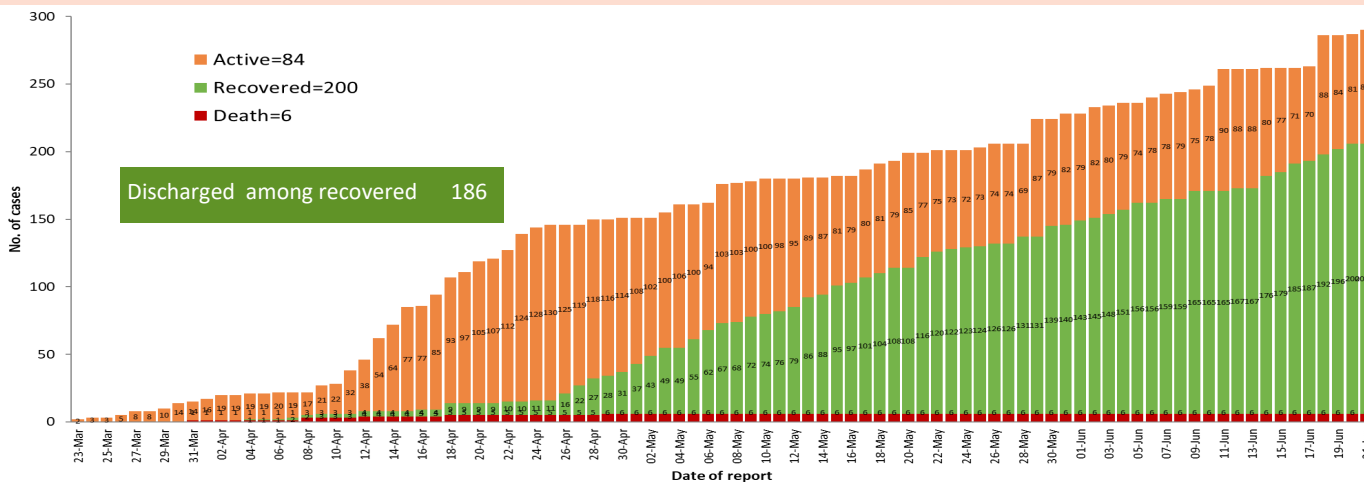
COVID-19 confirmed cases by types of transmissions (as of 21-6-2020, 11:30 pm) n=290



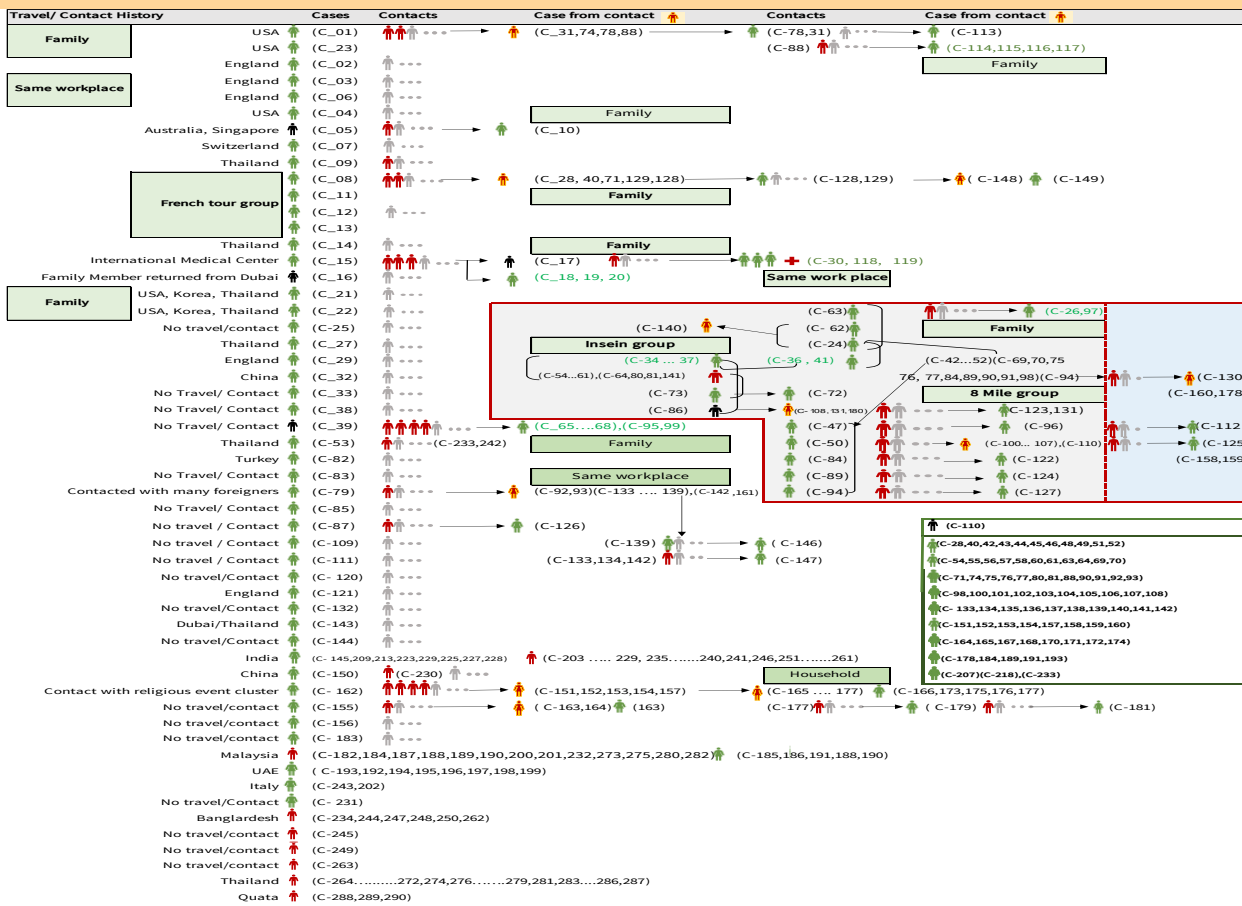
**Total laboratory confirmed cases by date (as of 21.6.2020, 11:30 pm), n= 290**



Cumulative Number of active confirmed cases, recovered and deaths ( 23.3.2020 – 21-6-2020), n (cumulative)=290



Summary of COVID-19 confirmed cases (as of 21-6-2020) ,n (contacts)= 5,501

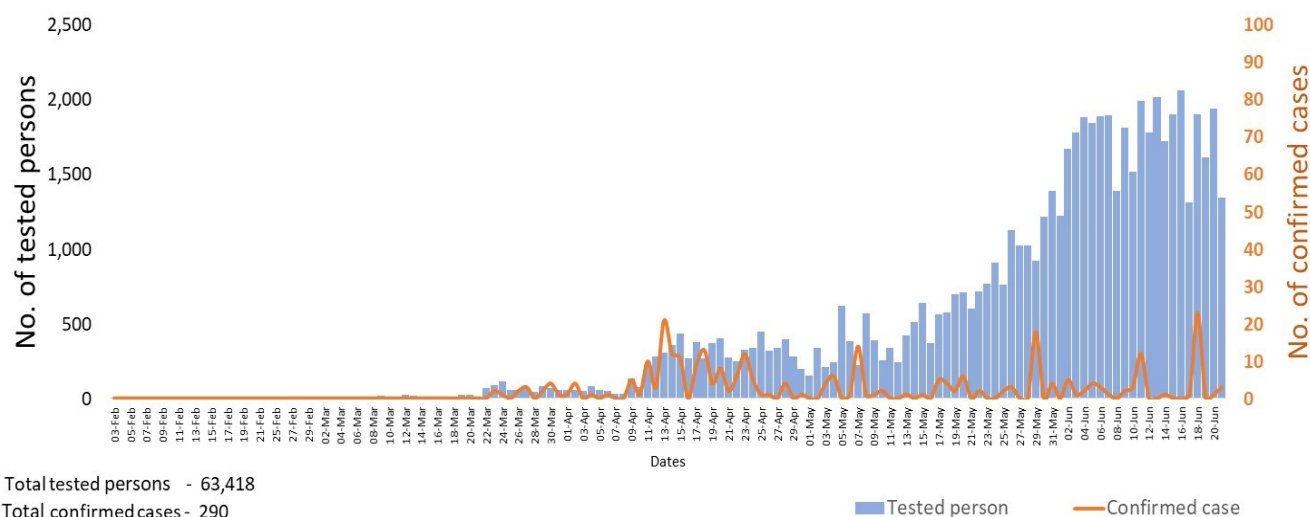


## Summary of current situation

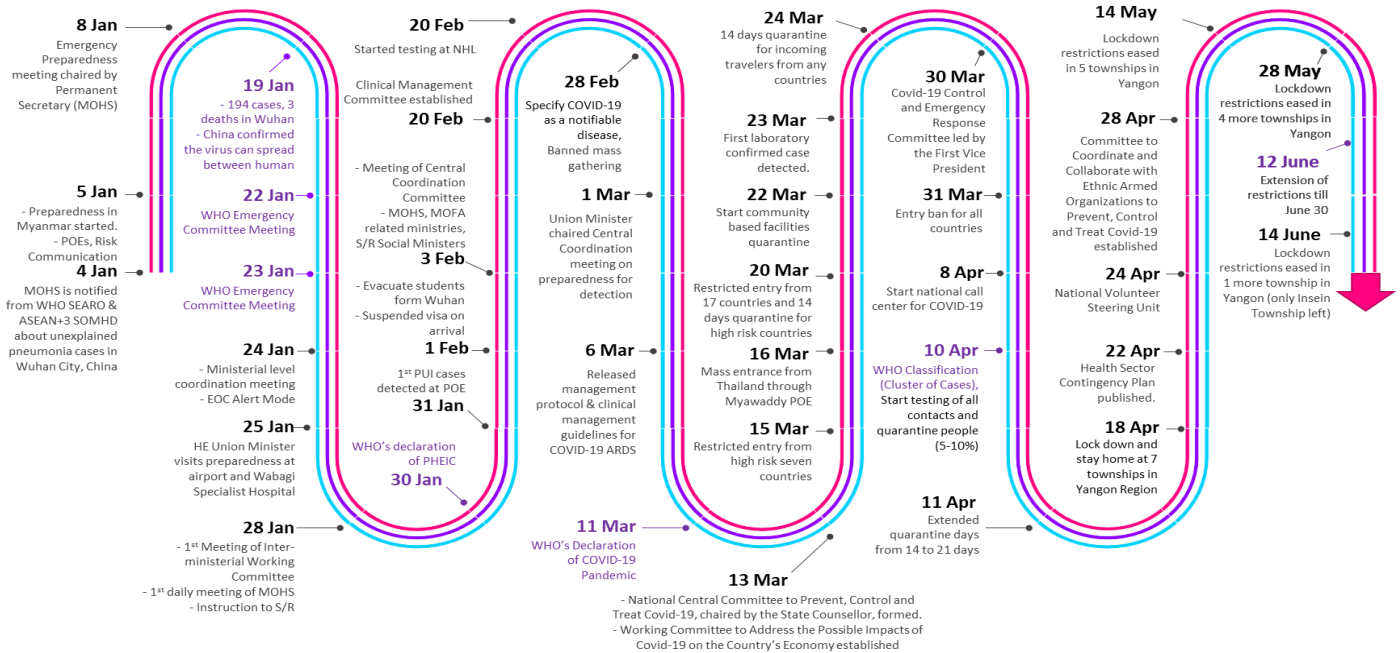
Type	New (20.6.2020-21.6.2020)	Total (on 21.6.2020)
<b>Suspected and Person Under Investigation (PUI)</b>	<b>24</b>	<b>221</b>
<b>Hospital Quarantine</b>	<b>4</b>	<b>89</b>
<b>Facility Quarantine</b>	<b>1,251</b>	<b>37,478</b>

Person under Investigation (PUI) by State/Region hospitals (20.6.2020 – 21.6.2020) n= 5,736			No. of Facility Quarantine sites and Quarantined people on 21.6.2020			
No.	State/Region	PUI	No.	State/Region	No. of facilities	Total no. of quaran-tine
1.	Yangon	2,951	1.	Bago	415	5,198
2.	Mandalay	1,082	2.	Magway	2,619	4,654
3.	Kayin	221	3.	Kayin	1,044	4,523
4.	Mon	210	4.	Mon	352	3,653
5.	Shan(N)	198	5.	Yangon	86	3,190
6.	Magway	190	6.	Kachin	406	3,108
7.	Bago	179	7.	Mandalay	129	2,127
8.	Shan ( E )	113	8.	Rakhine	473	2,054
9.	Ayeyarwaddy	102	9.	Sagaing	969	1,940
10.	Shan(S)	95	10.	Shan South	157	1,682
11.	Sagaing	83	11.	Ayeyarwaddy	222	1,557
12.	Kayah	76	12.	Tanintharyi	189	1,272
13.	Naypyitaw	63	13.	Shan North	241	1,007
14.	Rakhine	60	14.	Naypyitaw	19	906
15.	Thanintharyi	58	15.	Chin	32	254
16.	Kachin	33	16.	Kayah	18	177
17.	Chin	22	17.	Shan East	11	176
Total		5,736	Total		7,382	37,478

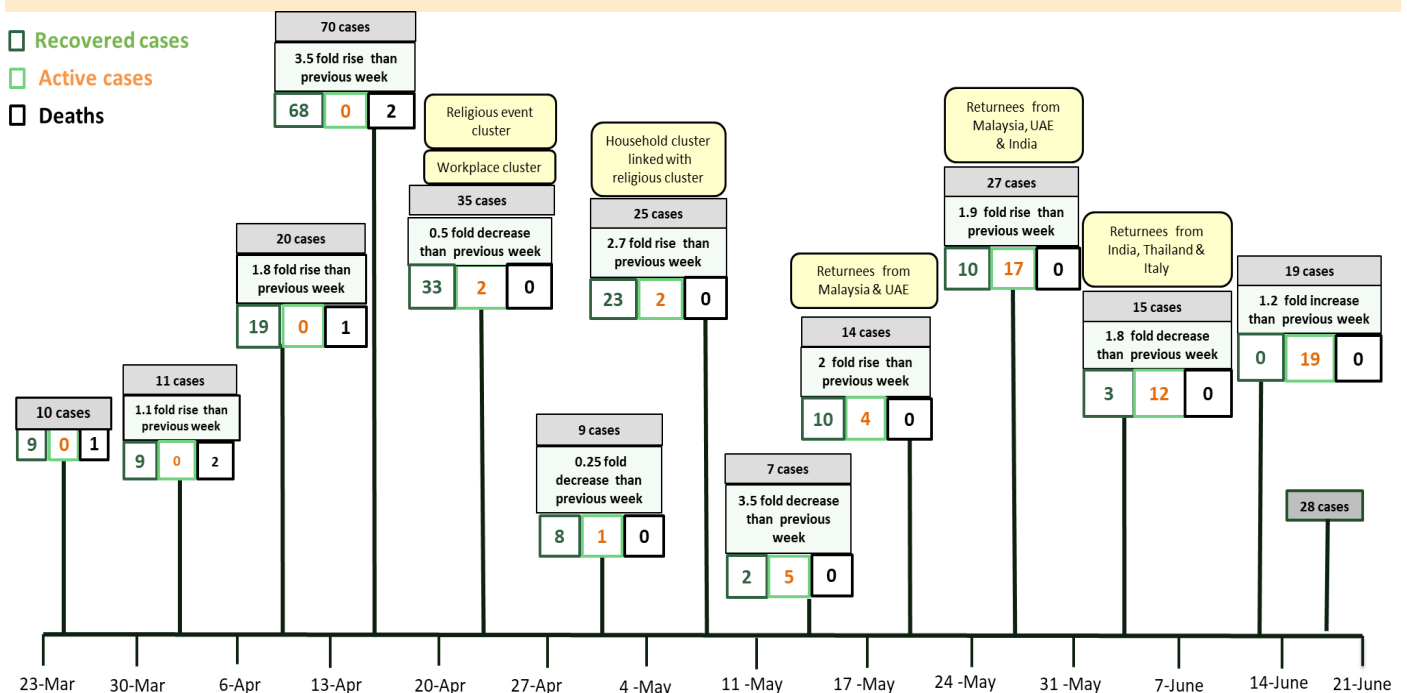
## COVID-19 confirmed cases among tested by date (as of 21.6.2020)



# Timeline of Preparedness and Response to COVID-19 in Myanmar (as of 21.6.2020)



## Summary of new confirmed cases detection after first two cases (as of 21.6.2020)



- Confirmed cases were detected as a peak in the 4th week after first confirmed cases due to the religious event cluster.
- Confirmed cases were decreased but still raised than the first 3 weeks due to the religious event cluster and workplace cluster.
- There were an increased in numbers of cases in the 7th week after the first two cases due to the household cluster linked with a religious cluster.
- Confirmed cases were detected by a nearly two-fold rise in the 9th and 10th weeks after the first two cases because of returnees coming back by relief flights.