



Ministry of Health and Sports (Myanmar)

Department of Public Health

Central Epidemiology Unit

(16 June 2020)

Coronavirus Disease 2019 (COVID-19)

Situation Report - 70

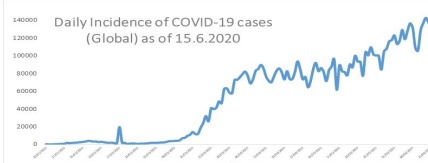
Data as reported by States and Regions by 00:00 AM MST 16 June 2020

Global Situation
(WHO situation report - 147)
data as of 14:30 MST 15 June 2020

Confirmed cases
7,823,289

Deaths
431,541

Case Fatality Rate
5.5 %



Myanmar Situation

Total tested
53,351

Confirmed cases
262

Negative
53,089

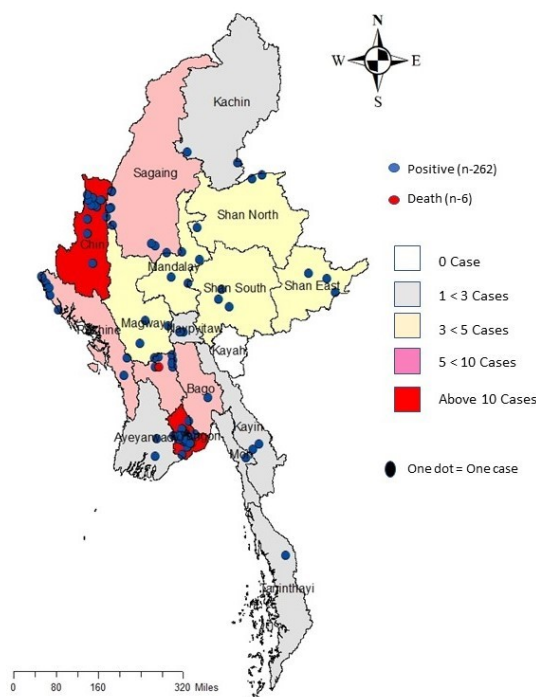
Recovered
179
68.3 % of confirmed cases

Active
77
29.3% of confirmed cases

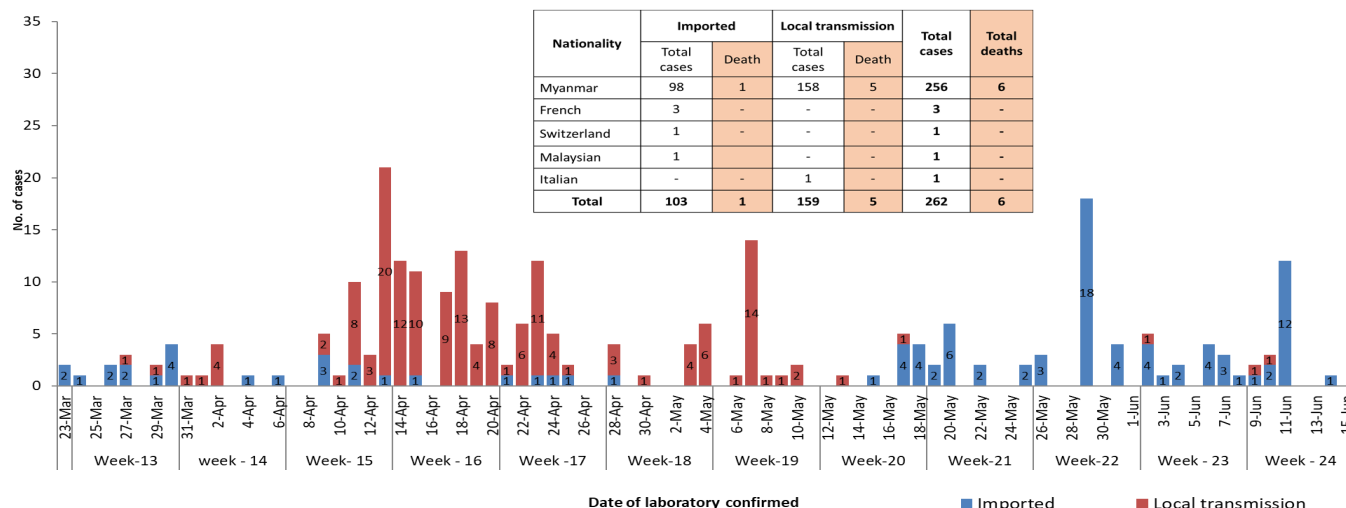
Death
6
2.2% of confirmed cases

No.	State/Region	COVID -19 Confirmed case	Recovered	Deaths
1.	Yangon	201	139(2 New)	5
2.	Chin	10	6 (1 New)	-
3.	Sagaing	9	7	-
4.	Bago	8	6	1
5.	Rakhine	8	1 (1 New)	-
6.	Shan(South)	4	2	-
7.	Mandalay	3	3	-
8.	Shan(East)	3	3	-
9.	Shan(North)	3	2	-
10.	Magway	3	2	-
11.	Naypyitaw	2	2	-
12.	Kayin	2	1	-
13.	Ayeyarwaddy	2	2	-
14.	Kachin	2	1	-
15.	Mon	1	1	-
16.	Thanintharyi	1	1	-
17.	Kayah	-	-	-
Total		262	179(4 New)	6

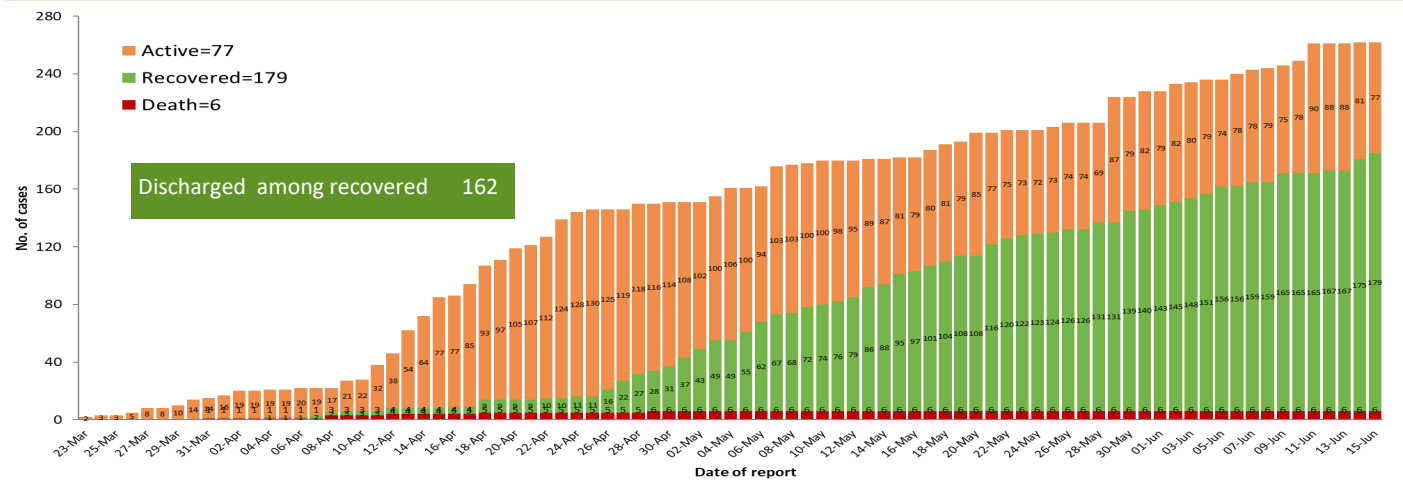
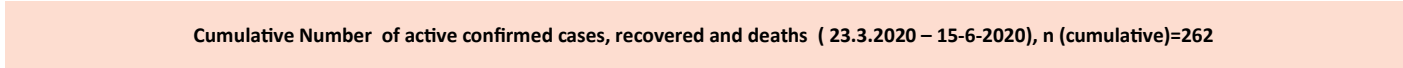
Map showing COVID-19 laboratory confirmed cases



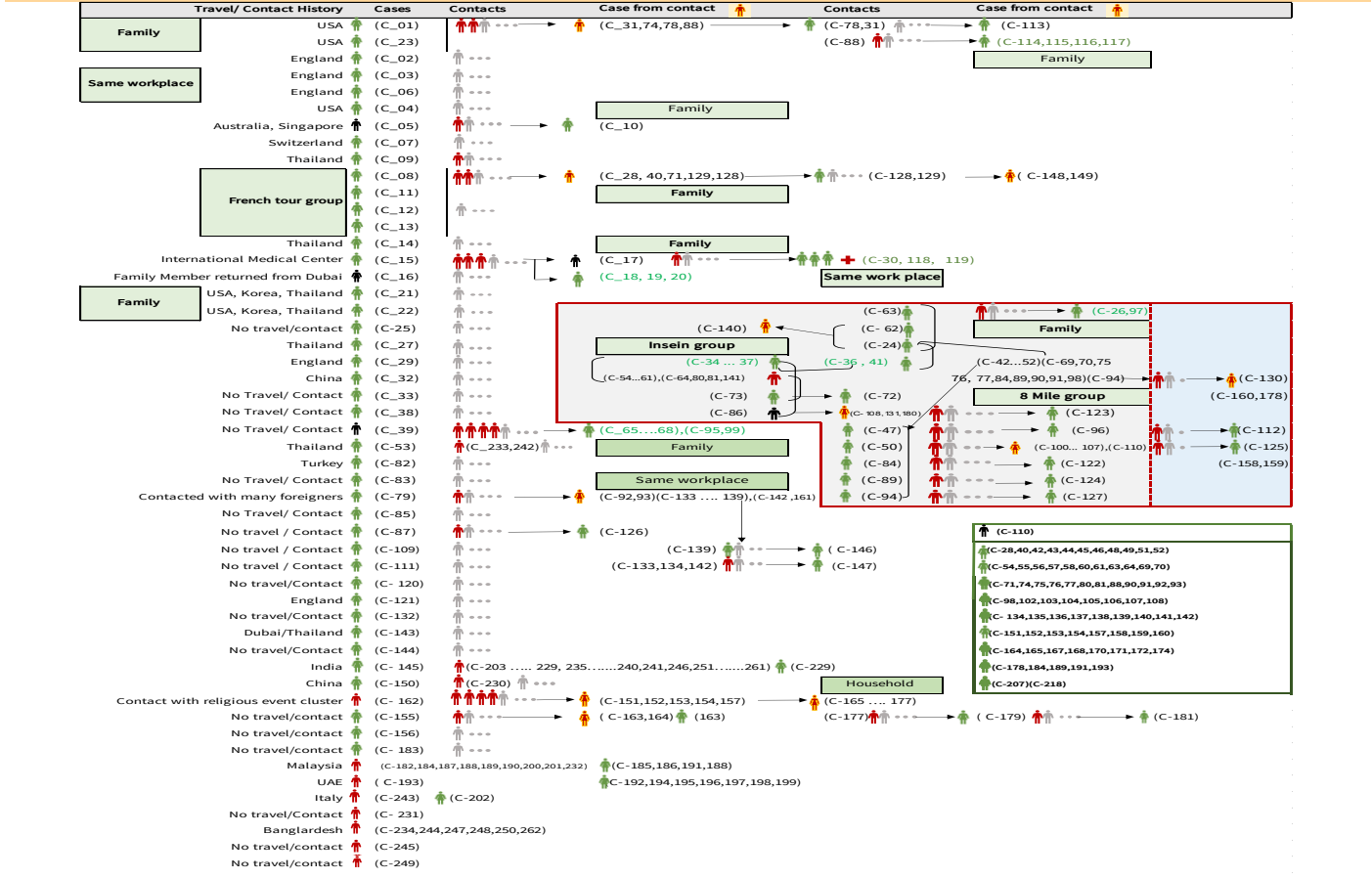
COVID-19 confirmed cases by types of transmissions (as of 16-6-2020, 00:00 am) n=262



Total laboratory confirmed cases by date (as of 15.6.2020, 00:00 am), n= 262



Summary of COVID-19 confirmed cases (as of 15-6-2020) ,n (contacts)= 5,407



Summary of current situation

Type	New (14.6.2020-15.6.2020)	Total (on 15.6.2020)
Suspected and Person Under Investigation (PUI)	35	251
Hospital Quarantine	5	86
Facility Quarantine	1,237	42,375

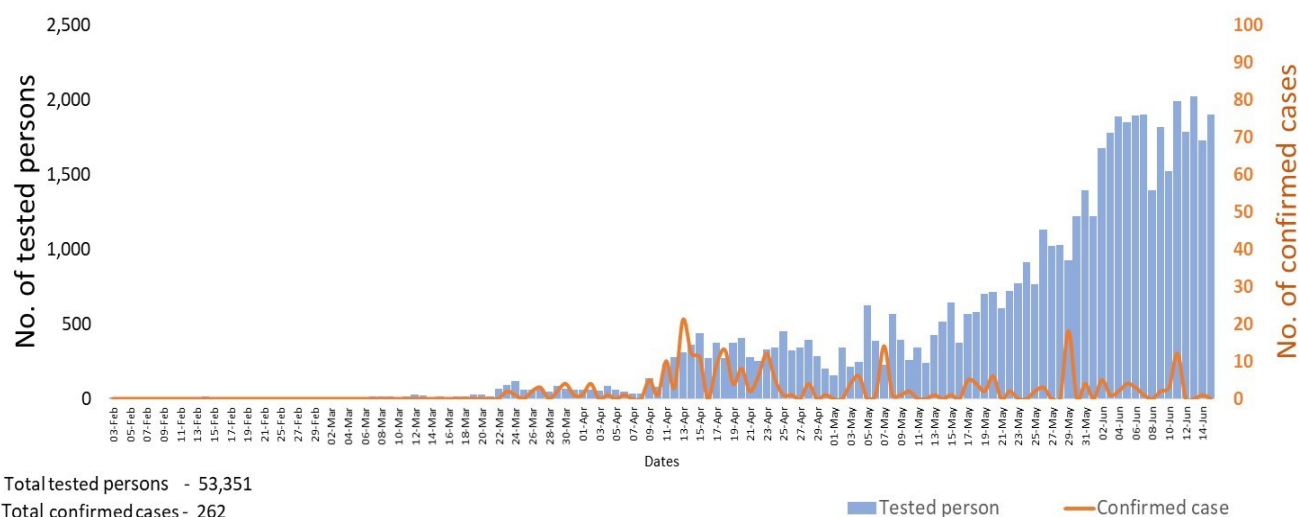
Person under Investigation (PUI) by State/Region hospitals (14.6.2020 – 15.6.2020) n= 5,559

No.	State/Region	PUI
1.	Yangon	2,866
2.	Mandalay	1,028
3.	Kayin	206
4.	Mon	205
5.	Shan(N)	196
6.	Magway	185
7.	Bago	179
8.	Shan (E)	112
9.	Ayeyarwaddy	102
10.	Shan(S)	94
11.	Sagaing	80
12.	Kayah	76
13.	Naypyitaw	63
14.	Rakhine	60
15.	Thanintharyi	54
16.	Kachin	31
17.	Chin	22
Total		5,559

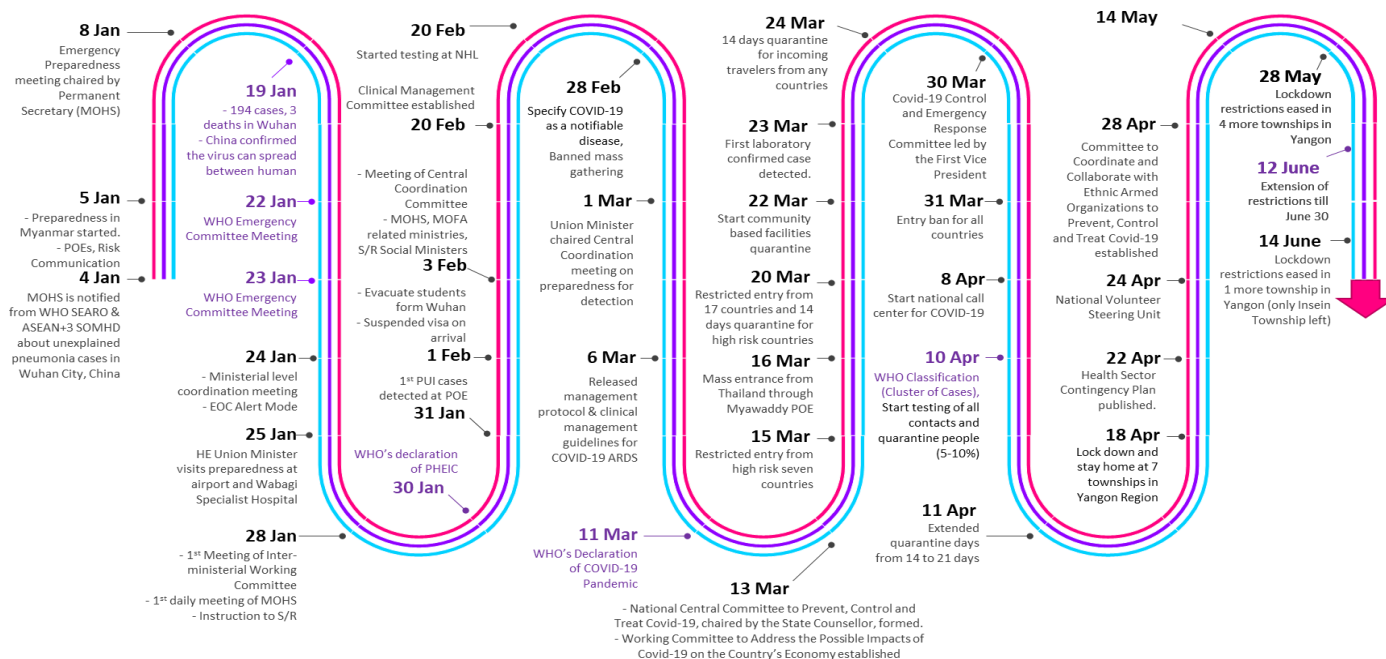
No. of Facility Quarantine sites and Quarantined people on 15.6.2020

No.	State/Region	No. of facilities	Total no. of quarantine
1.	Bago	470	6,692
2.	Magway	2,647	6,356
3.	Kayin	989	4,537
4.	Mon	300	3,865
5.	Kachin	309	3,607
6.	Mandalay	195	2,728
7.	Yangon	79	2,704
8.	Sagaing	996	2,448
9.	Rakhine	501	2,339
10.	Ayeyarwaddy	538	1,771
11.	Shan S	122	1,756
12.	Tanintharyi	189	1,359
13.	Naypyitaw	19	1,106
14.	Shan North	356	498
15.	Chin	33	255
16.	Kayah	18	217
17.	Shan East	11	137
Total		7,772	42,375

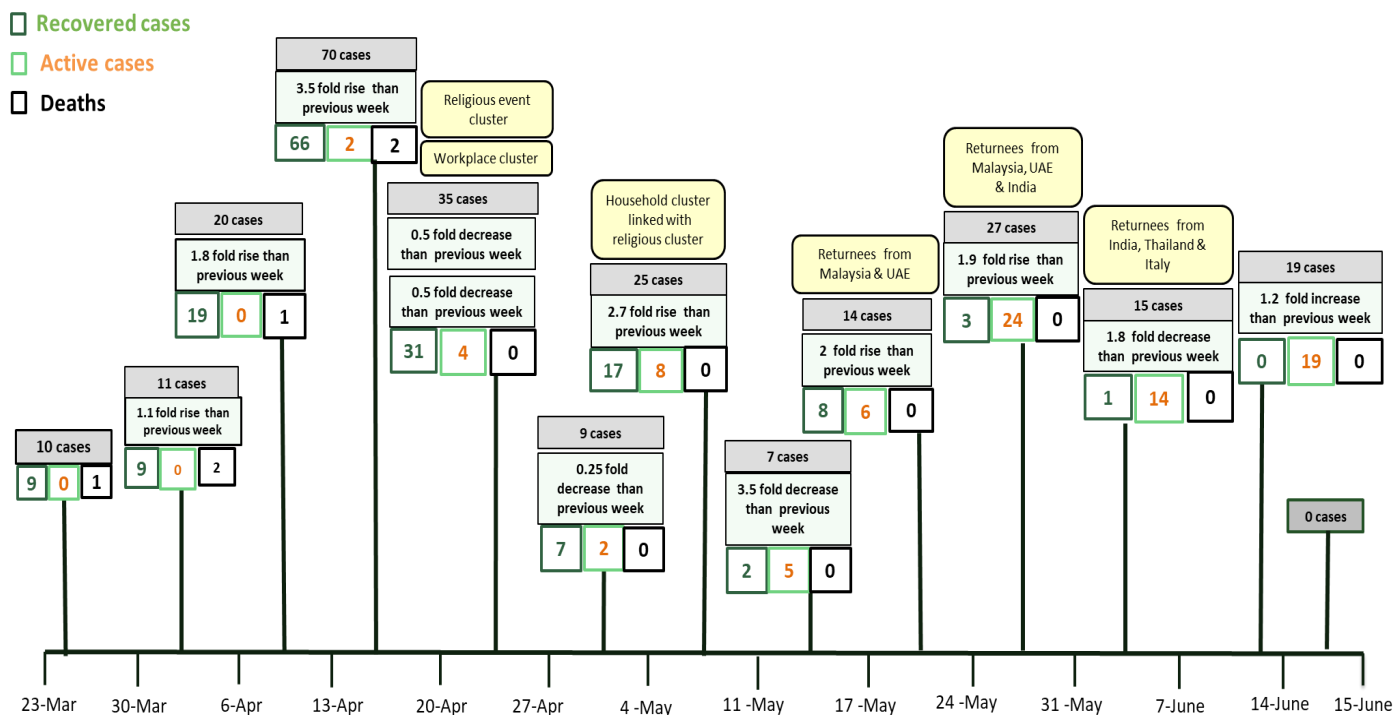
COVID-19 confirmed cases among tested by date (as of 15.6.2020)



Timeline of Preparedness and Response to COVID-19 in Myanmar (as of 15.6.2020)



Summary of new confirmed cases detection after first two cases (as of 15.6.2020)



- Confirmed cases were detected as a peak in the 4th week after first confirmed cases due to the religious event cluster.
- Confirmed cases were decreased but still raised than the first 3 weeks due to the religious event cluster and workplace cluster.
- There were an increased in numbers of cases in the 7th week after the first two cases due to the household cluster linked with a religious cluster.
- Confirmed cases were detected by a nearly two-fold rise in the 9th and 10th weeks after the first two cases because of returnees coming back by relief flights.