



Ministry of Health and Sports (Myanmar)

Department of Public Health

Central Epidemiology Unit

(21 December 2020)

Situation Report -258

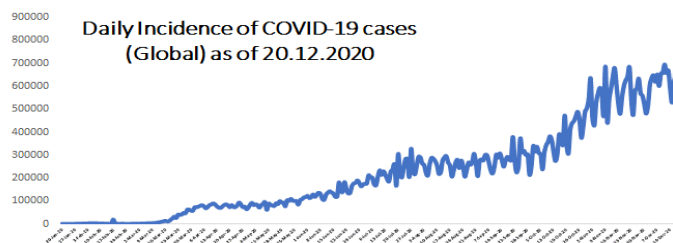
Coronavirus Disease 2019 (COVID-19)

WHO Coronavirus Disease (COVID-19) Dashboard data as of 5:34 PM CEST 20 December 2020

Confirmed cases
75,110,651

Deaths
1,680,395

Case Fatality Rate
2.2%



Myanmar Situation

Data as reported by States and Regions by 20 December 2020

Total Tested-1,594,654

116,134

Confirmed Cases

1,478,520

Negative

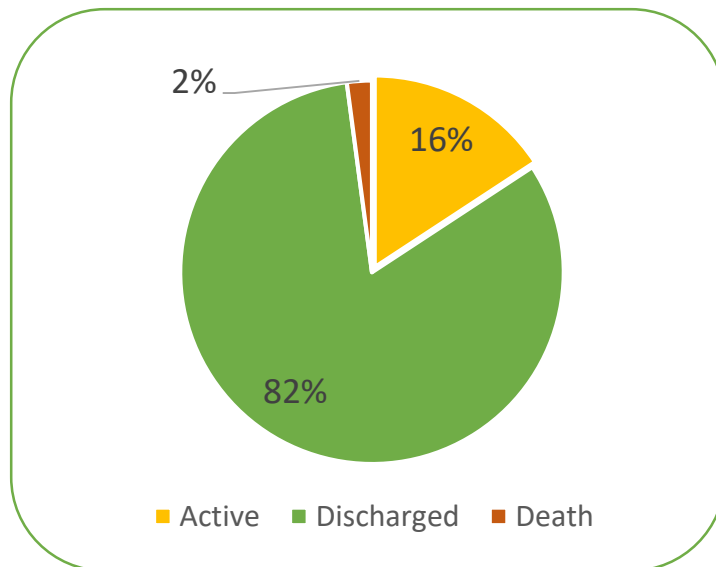
95,387

Discharged

2,443

Death

Current Situation of Confirmed cases (23.3.2020-20.12.2020), n=116,134



COVID-19 confirmed cases by two phases (23.3.2020 – 20-12-2020), n=116,134

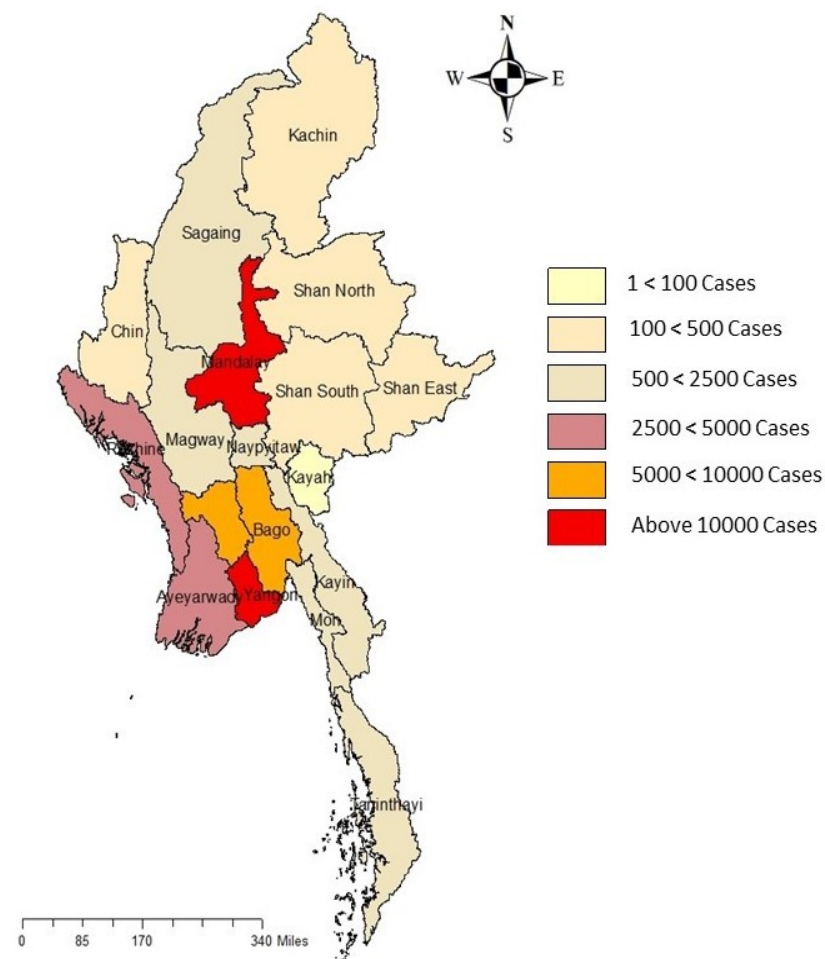
Date	Local transmission		Imported		Total cases	Total Death
	No. of cases	Death	No. of case	Death		
(23.3.2020-15.8.2020)	161	5	213	1	374	6
(16.8.2020-20.12.2020)	115426	2437	334	-	115760	2437
Total	115587	2442	547	1	116134	2443

COVID-19 confirmed cases and death by State/Region (23.3.2020 – 20-12-2020), n=116,134

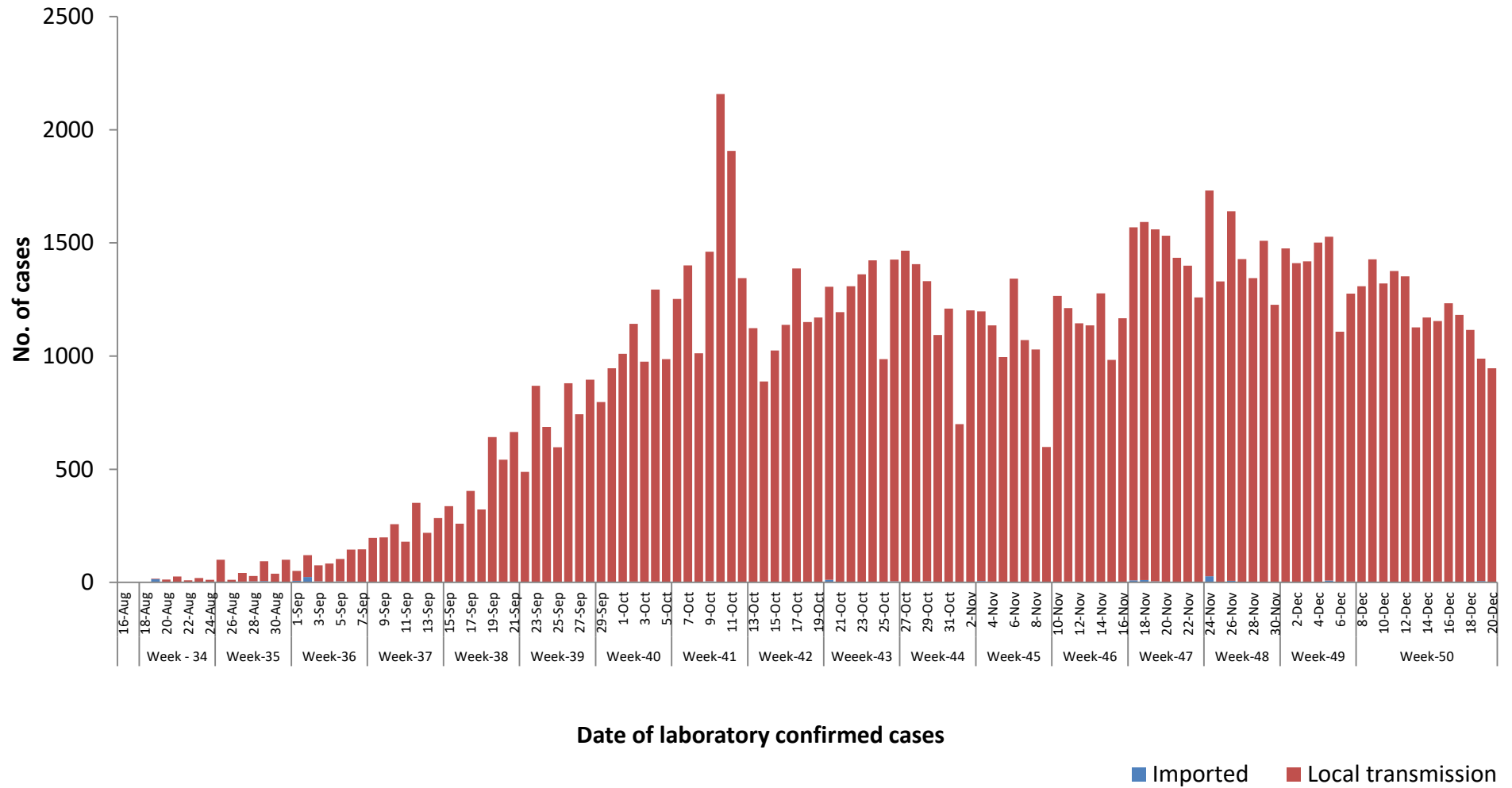
No	State/Region	COVID –19 Confirmed case	New confirmed cases within 24 hours	Deaths
1	Yangon	79,708	324	2,211
2	Mandalay	11,700	278	117
3	Bago	6,984	108	14
4	Ayeyarwaddy	4,175	57	27
5	Rakhine	4,081	6	28
6	Magway	2,399	62	2
7	Mon	2,061	36	17
8	Sagaing	1,530	21	6
9	Kayin	958	5	13
10	Naypyitaw	627	6	3
11	Thanintharyi	523	3	-
12	Kachin	484	25	-
13	Shan (South)	380	1	1
14	Chin	181	3	1
15	Shan (North)	174	12	2
16	Shan (East)	134	-	-
17	Kayah	35	-	1
Total		116,134	947	2,443

*No. of new cases by State and Region are counted according to epidemiology situation

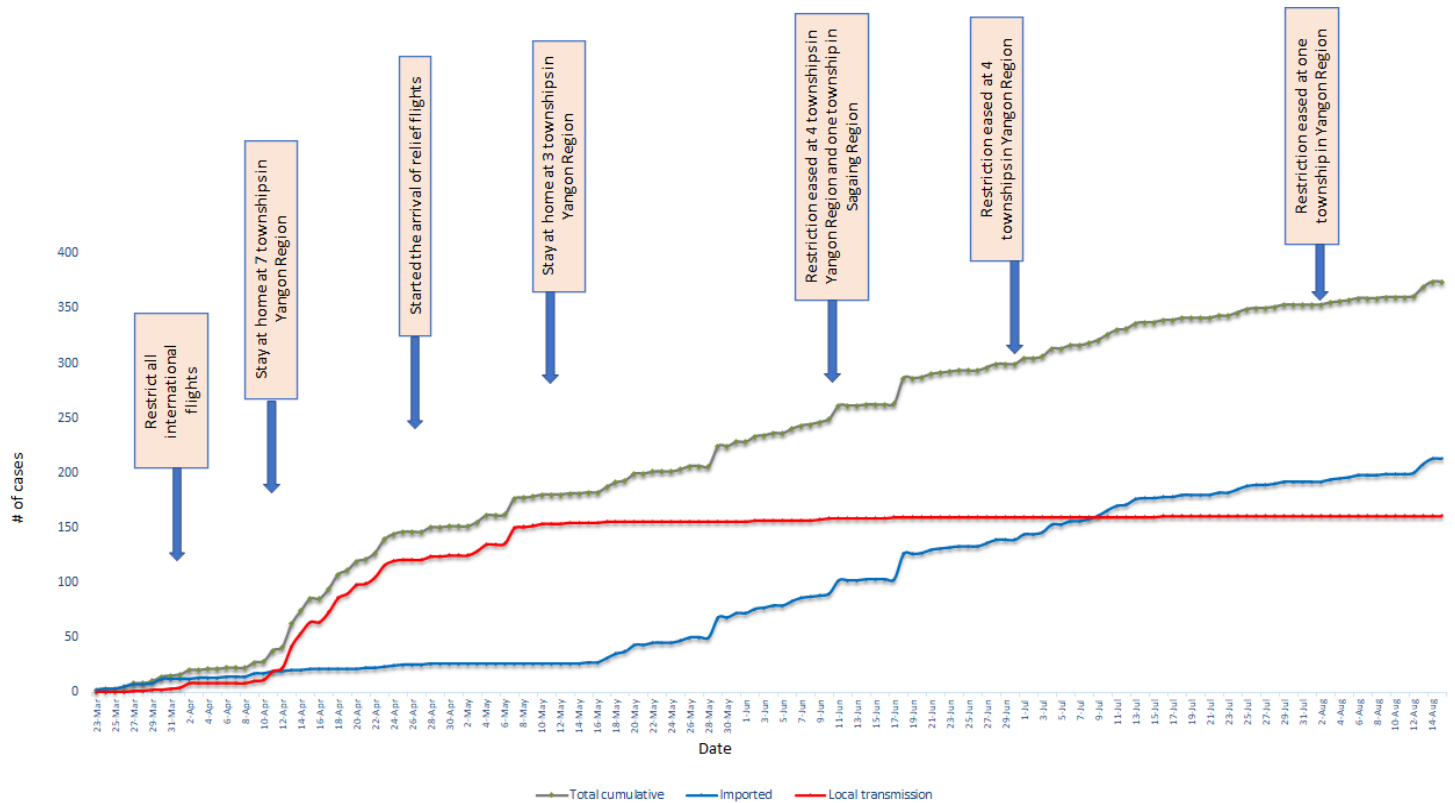
Map showing COVID-19 laboratory confirmed cases



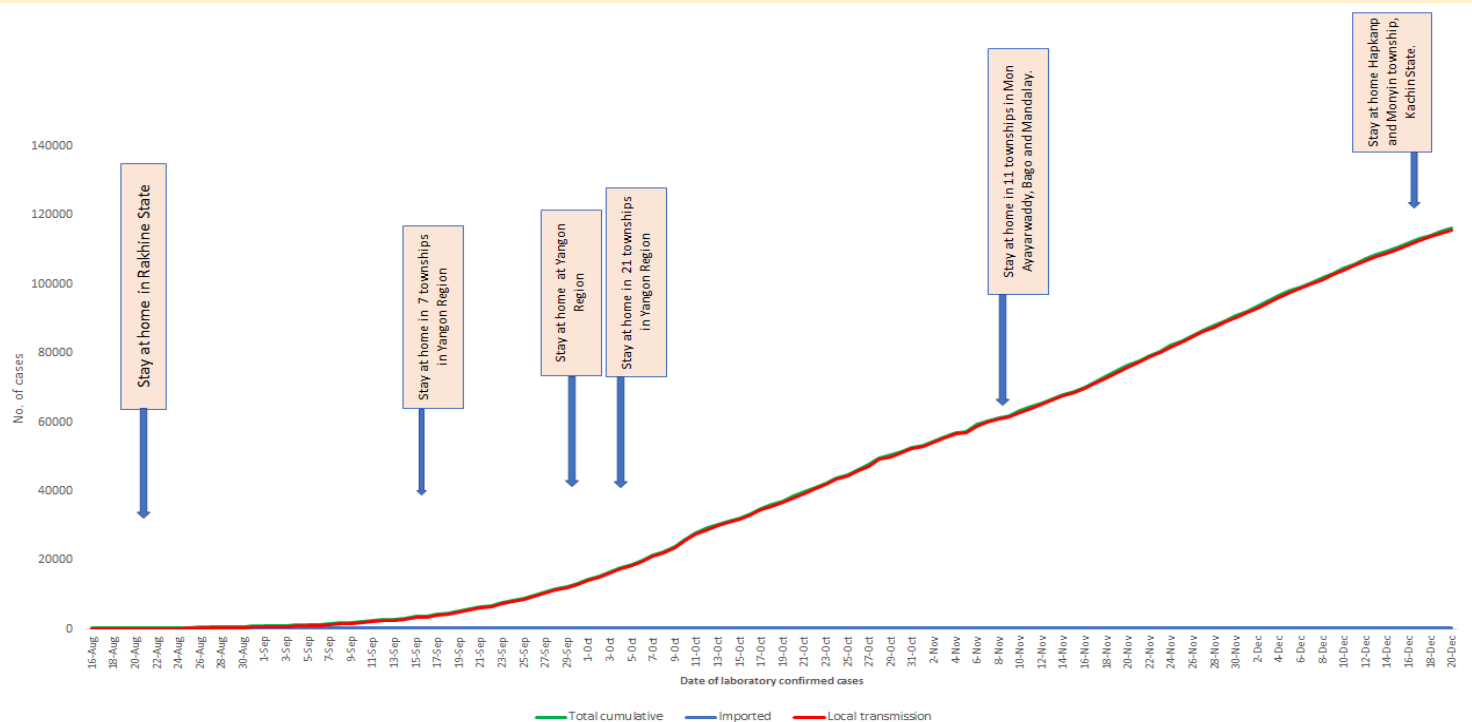
COVID-19 confirmed cases by types of transmissions (as of 20.12.2020) n=116,134



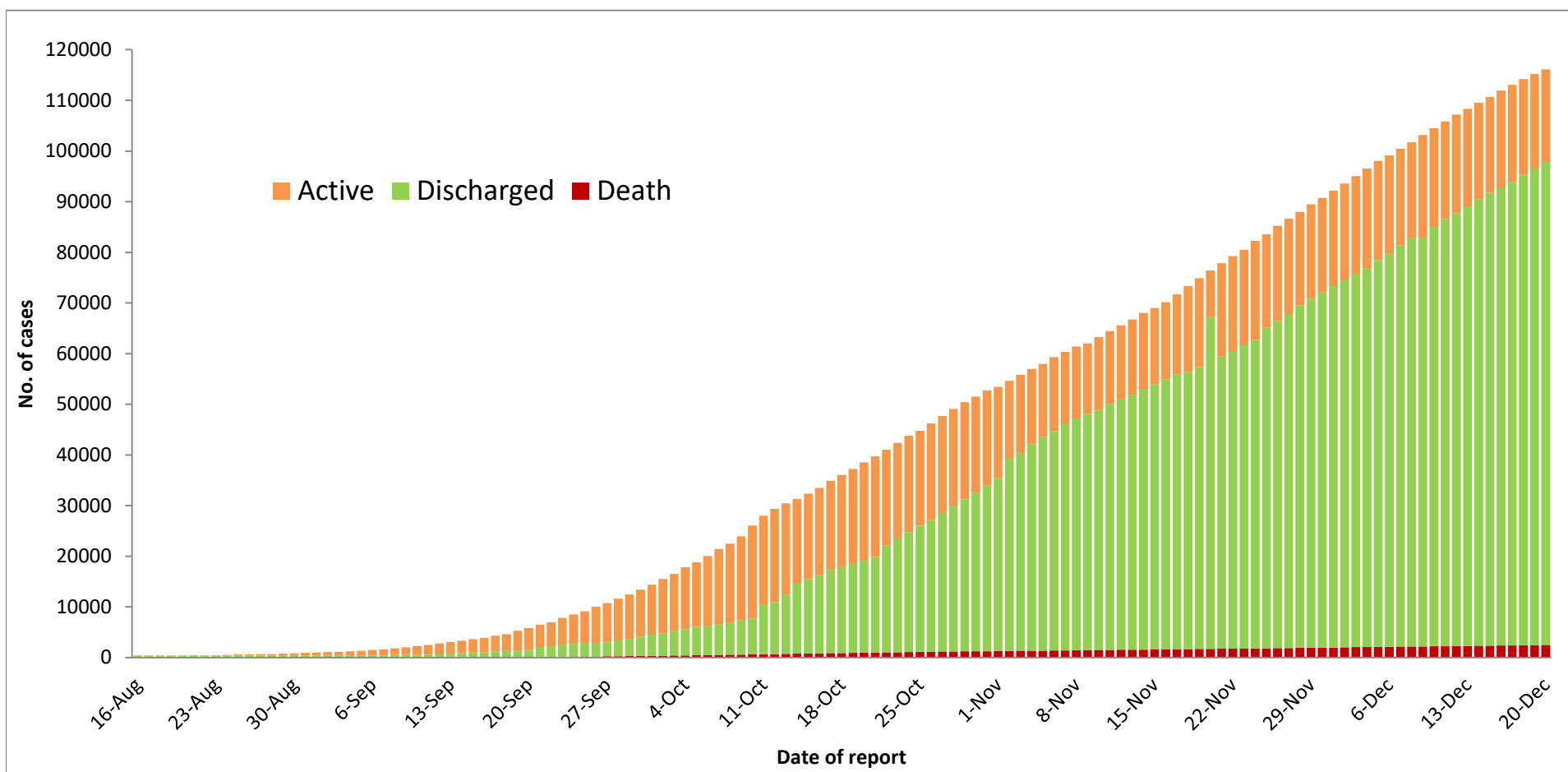
Total cumulative number of cases, imported and local transmission cases by date (23.3.2020- 15.8.2020), n= 374



Total cumulative number of cases, imported and local transmission cases by date (16.8.2020- 20.12.2020)



Cumulative Number of active confirmed cases, discharged and deaths (23.3.2020 – 20.12.2020), n (cumulative)=116,134



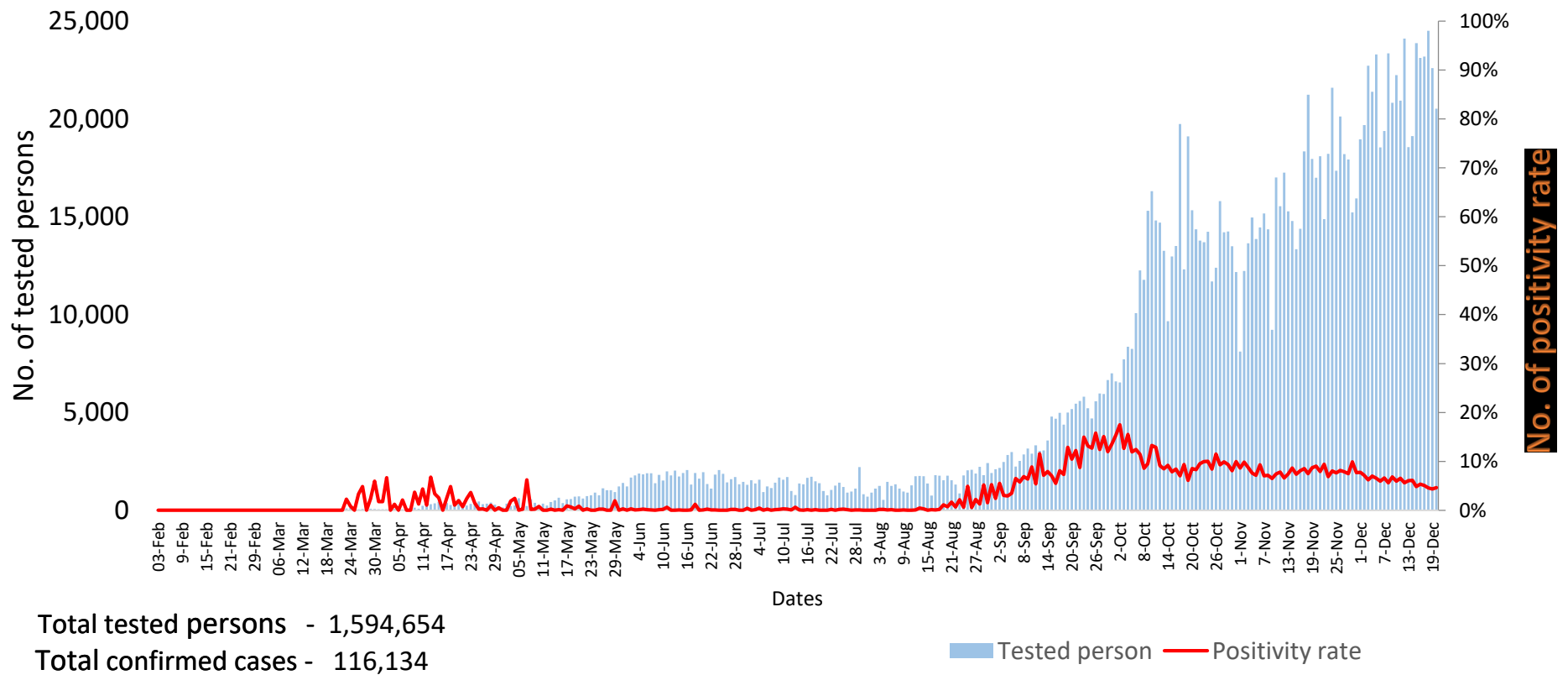
* Discharged criteria for COVID-19 patients was changed on 10.10.2020

Summary of current situation		
Type	New (19.12.2020-20.12.2020)	Total (on 20.12.2020)
Suspected and Person Under Investigation (PUI)	392	1,462
Hospital Quarantine	32	250
Facility Quarantine	4,488	64,895

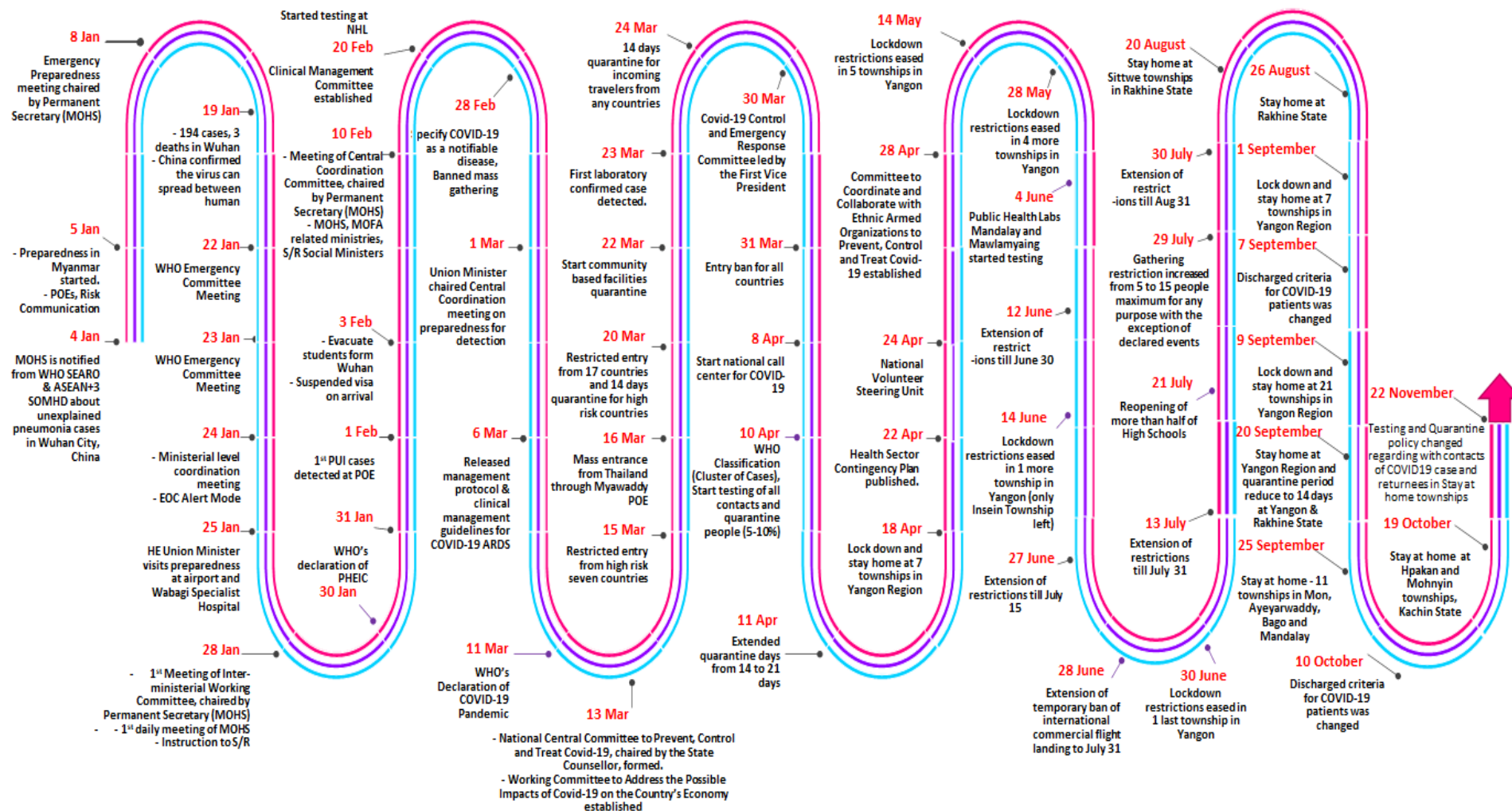
Person under Investigation (PUI) by State/Region hospitals (31.1.2020 – 20.12.2020) n= 57,173			No. of Facility Quarantine sites and Quarantined people on 20.12.2020			
No.	State/Region	PUI	No.	State/Region	No. of facilities	Total no. of quarantine
1	Yangon	39273	1	Ayeyarwaddy	1434	14125
2	Mandalay	7962	2	Bago	1144	7413
3	Ayeyarwaddy	1493	3	Mandalay	359	7565
4	Mon	1427	4	Sagaing	975	6887
5	Bago	1384	5	Yangon	198	6593
6	Kayin	1271	6	Magway	733	3975
7	Magway	960	7	Kayin	416	3407
8	Rakhine	799	8	Rakhine	364	2301
9	Thanintharyi	627	9	Shan South	118	2347
10	Shan (N)	573	10	Kachin	225	2148
11	Naypyitaw	319	11	Naypyitaw	13	2145
12	Sagaing	287	12	Tanintharyi	153	1620
13	Shan (E)	211	13	Shan North	458	1617
14	Shan (S)	208	14	Mon	23	1125
15	Kachin	178	15	Shan East	20	635
16	Chin	101	16	Chin	35	565
17	Kayah	100	17	Kayah	24	427
Total		57,173	Total		6,692	64,895

*Facility quarantine rule changed from 21 days to 14 days on 11-9-2020 while 7 days home quarantine rule remain unchanged.

COVID-19 positivity rate by date (as of 20.12.2020)



Timeline of Preparedness and Response to COVID-19 in Myanmar (as of 20.12.2020)



Hotline Number— 0673 420 268

Data source - CEU, DMS, NHL, PHL (MDY and MLM), DMR, DSGH, State and Region Health Departments