



Ministry of Health and Sports (Myanmar)

Department of Public Health

Central Epidemiology Unit

(23 April 2020)

Situation Report - 17 Data as reported by States and Regions by 11:40 PM MST 22 April 2020

Global Situation
(according to WHO situation report - 93, data as of 15:30 MST 22 April 2020)

Confirmed cases	Deaths
2,471,136	169,006

Myanmar

Map showing COVID-19 laboratory confirmed cases

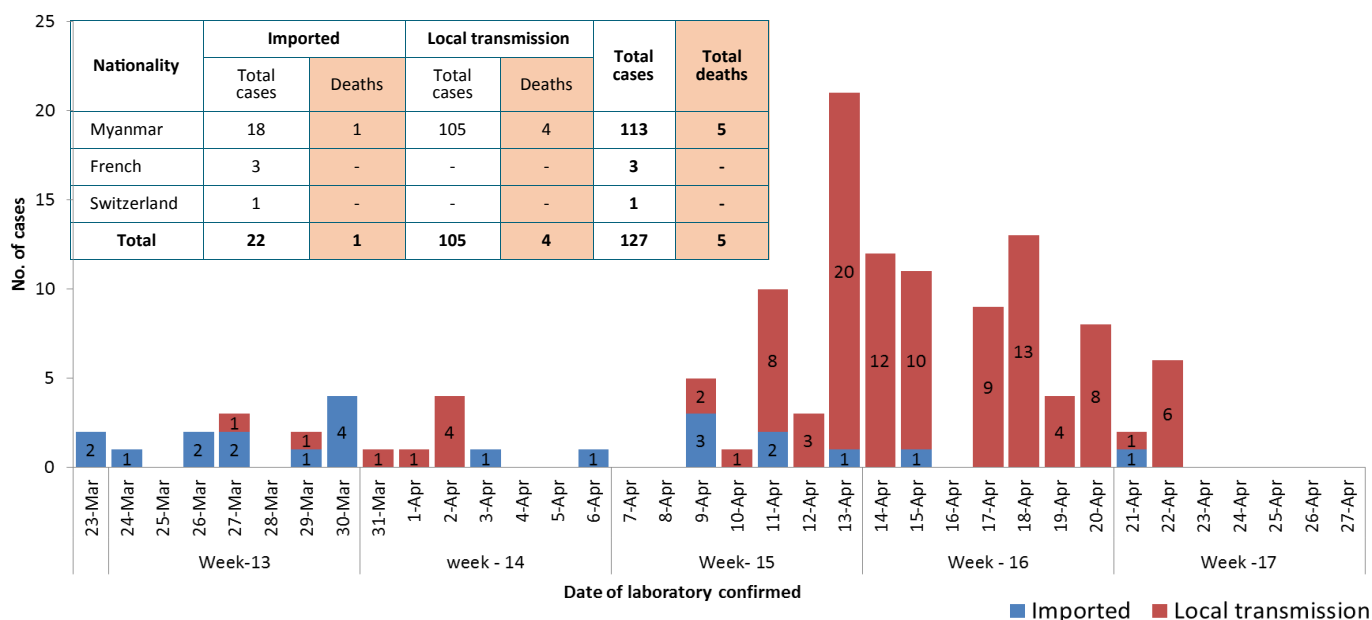


● Case
● Death

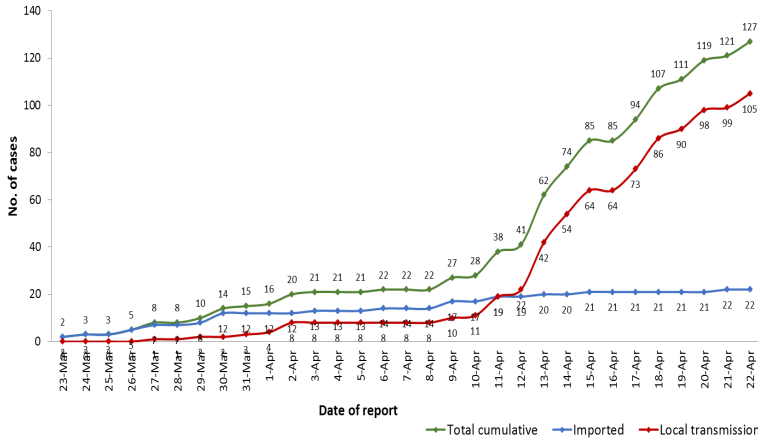
n (case) = 127
n (death) = 5

Total tested Specimen for COVID-19 (as of 22-4-2020,11:40 PM)				
5,446				
Negative		Positive		Deaths
5,319		127		5
No.	State/Region	COVID-19 Confirmed case	Recovered	Deaths
1.	Yangon	98 (6 new)	7	4
2.	Bago	7	-	1
3.	Sagaing	6	-	-
4.	Chin	5	-	-
5.	Shan(East)	3	-	-
6.	Mandalay	2	1	-
7.	Shan(South)	2	-	-
8.	Naypyitaw	1	1	-
9.	Shan(North)	1	-	-
10.	Mon	1	-	-
11.	Magway	1	-	-
12.	Kayar	-	-	-
13.	Rakhine	-	-	-
14.	Ayeyarwaddy	-	-	-
15.	Kayin	-	-	-
16.	Kachin	-	-	-
17.	Thanintharyi	-	-	-
Total		127(6 new)	9	5

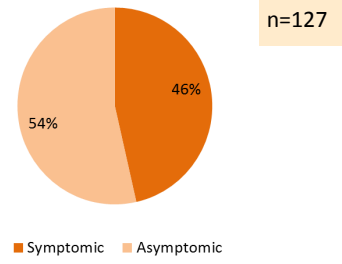
COVID-19 confirmed cases by date of laboratory confirmation (as of 22-4-2020,11:40 PM) n= 127



Total laboratory confirmed cases by date(as of 22.4.2020, 11:40 PM)



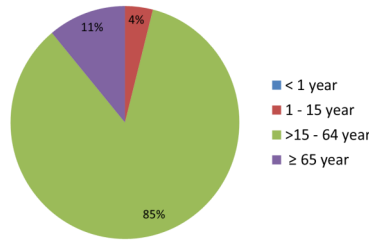
Presentation of COVID-19 confirmed cases (as of 22.4.2020)



SN	Type of cluster	No. of clusters	# of Cases
1	Family cluster	8	24
2	Work place cluster	3	9
3	Religious event cluster	1	68

COVID-19 confirmed cases by age group (as of 22.4.2020),n=127

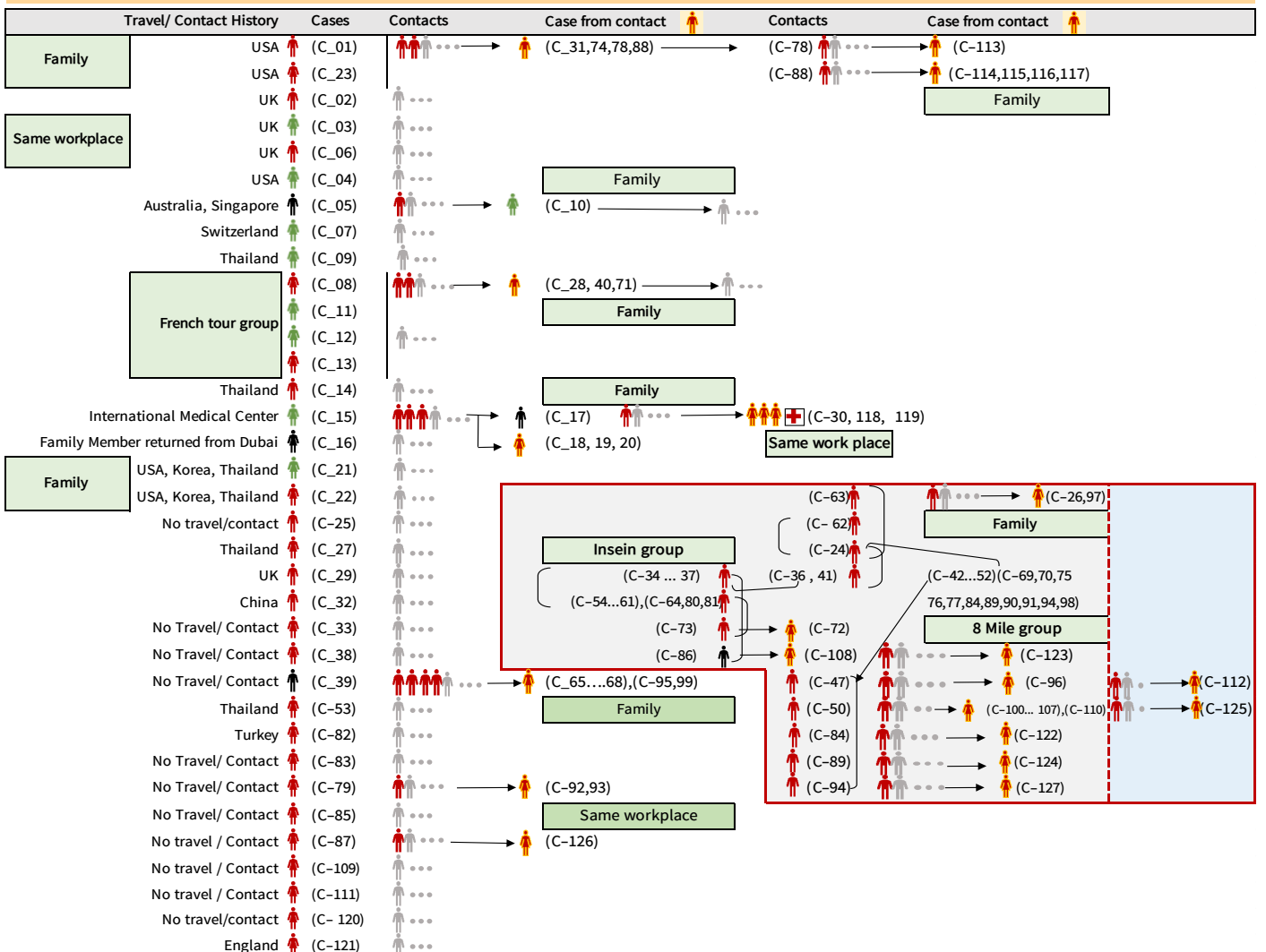
- ◆ Minimum age - 1 year 6 month
- ◆ Maximum age - 85 year
- ◆ Mean age - 40 year
- ◆ Medium age - 39 year



COVID-19 confirmed cases among PUI and Quarantine (as of 22.4.2020)

No.	Types of isolation and Quarantine	No. of cases
1.	PUI	55
2.	Facility Quarantine	50
3.	Home Quarantine	17
4.	Hotel Quarantine	3
5.	Hospital Quarantine	2
Total		127

Summary of COVID-19 confirmed cases (as of 22-4-2020) ,n= 2727



Summary of situation (21.4.2020 – 22.4.2020)

Type	New	Total
Suspected and Person Under Investigation (PUI)	121	2,333
Hospital Quarantine	26	167
Facility Quarantine	2,292	38,964

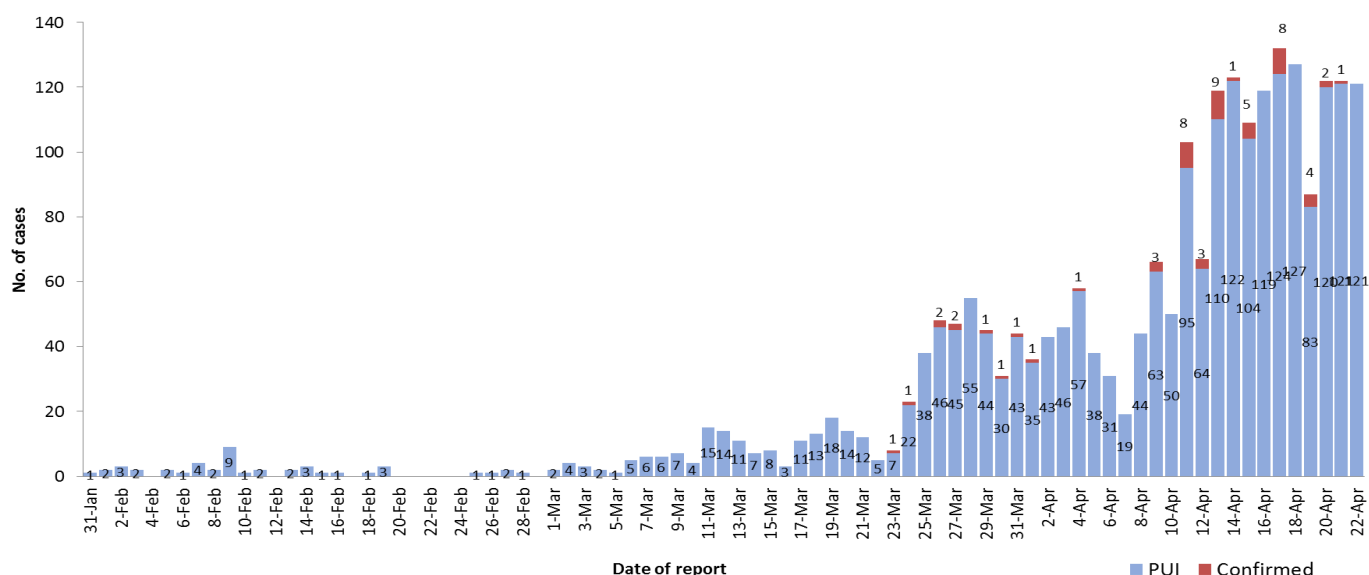
Person under Investigation (PUI) by State/Region hospitals (31.1.2020 – 22.4.2020) n=2,333

Summary of Facility Quarantine List (as of 22.4.2020)

No.	State/Region	PUI
1.	Yangon	1,137
2.	Mandalay	304
3.	Bago	133
4.	Shan (N)	101
5.	Magway	93
6.	Kayin	74
7.	Mon	73
8.	Shan (E)	60
9.	Kayar	57
10.	Ayeyarwaddy	57
11.	Shan (S)	54
12.	Naypyitaw	53
13.	Sagaing	49
14.	Rakhine	33
15.	Tanintharyi	24
16.	Kachin	18
17.	Chin	13
Total		2,333

No.	State/Region	No. of facilities	Total no. of quarantine people
1.	Magway	1,755	7,890
2.	Sagaing	1,468	7,409
3.	Kachin	428	5,483
4.	Bago	578	3,577
5.	Mandalay	678	3,183
6.	Shan (E)	37	1,637
7.	Kayin	424	1,505
8.	Shan (S)	430	1,320
9.	Shan (N)	430	1,310
10.	Rakhine	165	1,078
11.	Naypyitaw	3	1,076
12.	Mon	98	970
13.	Yangon	21	844
14.	Ayeyarwaddy	249	832
15.	Tanintharyi	228	502
16.	Kayah	18	176
17.	Chin	33	163
Total		7,043	38,964

COVID-19 laboratory confirmed cases among PUI (31.1.2020-22.4.2020), n (PUI)= 2333, n (confirmed)=55



Preparedness and Response to COVID-19 in Myanmar



Definition of the term “Contact Person”

(as of 7-4-2020) (Reference – *European Center for Disease Prevention and Control*)

- ⇒ A contact of a COVID-19 case is any person who had contact with a COVID-19 case within a timeframe ranging from 48 hours before the onset of symptoms of the case to 14 days after the onset of symptoms.
- ⇒ If the case had no symptoms, a contact person is defined as someone who had contact with the case within a timeframe ranging from 48 hours before the sample which led to confirmation was taken to 14 days after the sample was taken.

Classification of contact based on level of exposure

High-risk exposure (Close Contact)

A person:

- ◆ having had face-to-face contact with a COVID-19 case within one metre for more than 15 minutes
- ◆ having had physical contact with a COVID-19 case
- ◆ having unprotected direct contact with infectious secretions of a COVID-19 case (e.g. being coughed on)
- ◆ who was in a closed environment (e.g. household, classroom, meeting room, hospital waiting room, etc.) with a COVID-19 case for more than 15 minutes
- ◆ in an aircraft, sitting within two seats (in any direction) of the COVID-19 case, travel companions or persons providing care, and crew members serving in the section of the aircraft where the index case was seated (if severity of symptoms or movement of the case indicate more extensive exposure, passengers seated in the entire section or all passengers on the aircraft may be considered close contacts)
- ◆ A healthcare worker or other person providing care to a COVID-19 case, or laboratory workers handling specimens from a COVID-19 case, without recommended PPE or with a possible breach of PPE

Low-risk exposure

A person:

- ◆ having had face-to-face contact with a COVID-19 case within one metre for less than 15 minutes
- ◆ who was in a closed environment with a COVID-19 case for less than 15 minutes
- ◆ travelling together with a COVID-19 case in any mode of transport
- ◆ A healthcare worker or other person providing care to a COVID-19 case, or laboratory workers handling specimens from a COVID-19 case, wearing the recommended PPE