



# Ministry of Health and Sports (Myanmar)

## Department of Public Health

### Central Epidemiology Unit

( 20 April 2020)

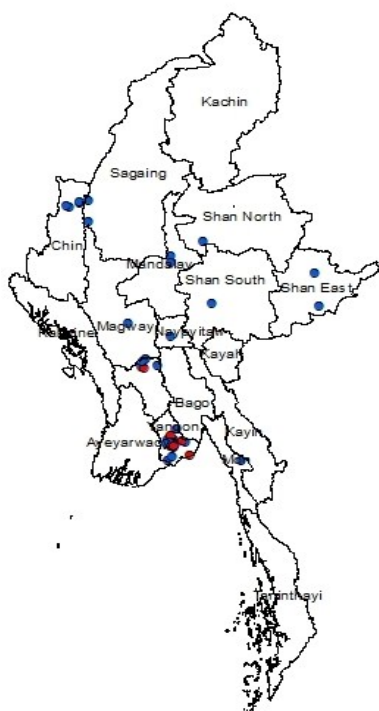
**Coronavirus Disease 2019 (COVID-19)**  
**Situation Report - 14** Data as reported by States and Regions by 10:00 PM MST 19 April 2020

**Global Situation**  
 (according to WHO situation report - 90, data as of 15:30 MST 19 April 2020)

<b>Confirmed cases</b>	<b>Deaths</b>
<b>2,241,359</b>	<b>152,551</b>

### Myanmar

Map showing COVID-19 laboratory confirmed cases

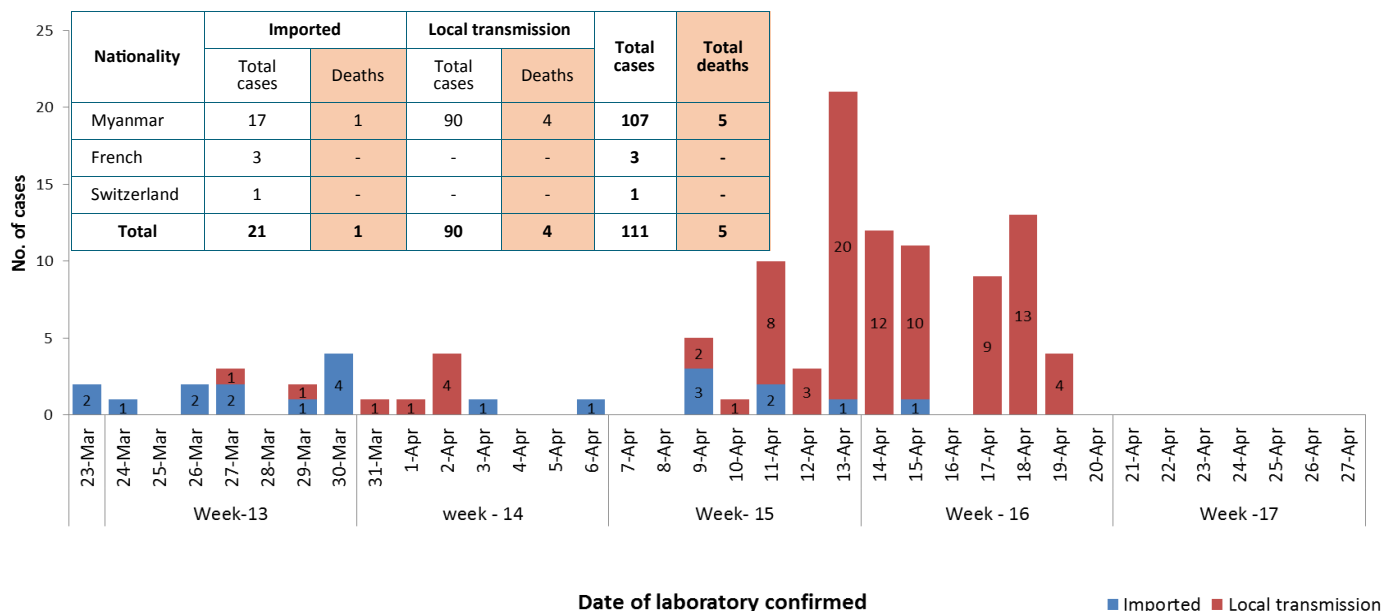


● Case  
 ● Death

n (case) = 111  
 n (death) = 5

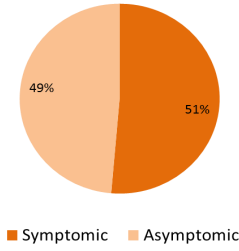
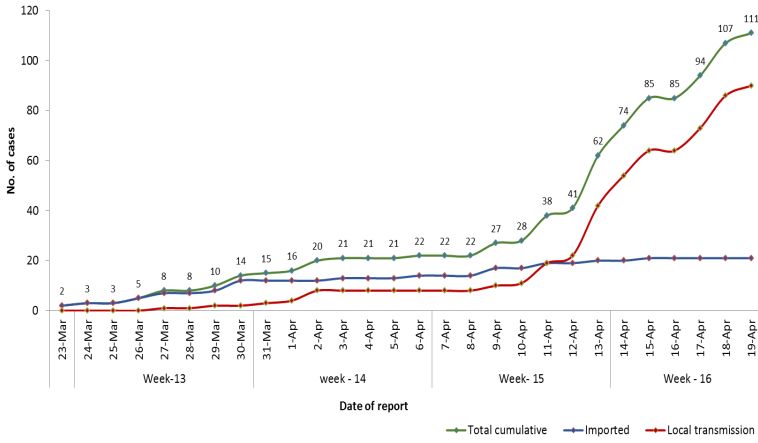
Total tested Specimen for COVID-19 (as of 19-4-2020,10:00 PM)				
<b>4,517</b>				
Negative	Positive	Recovered	Deaths	
<b>4,406</b>	<b>111</b>	<b>7</b>	<b>5</b>	
No.	State/Region	COVID-19 Confirmed case	Recovered	Deaths
1.	Yangon	91(4 new)	5( 2 new)	4
2.	Bago	5	-	1
3.	Chin	4	-	-
4.	Mandalay	2	1	-
5.	Sagaing	2	-	-
6.	Shan(East)	2	-	-
7.	Shan(South)	1	-	-
8.	Naypyitaw	1	1	-
9.	Shan(North)	1	-	-
10.	Mon	1	-	-
11.	Magway	1	-	-
12.	Kayar	-	-	-
13.	Rakhine	-	-	-
14.	Ayeyarwaddy	-	-	-
15.	Kayin	-	-	-
16.	Kachin	-	-	-
17.	Thanintharyi	-	-	-
<b>Total</b>		<b>111(4 new)</b>	<b>5( 2 new)</b>	<b>5</b>

COVID-19 confirmed cases by date of laboratory confirmation (as of 19-4-2020,10:00 PM) n= 111



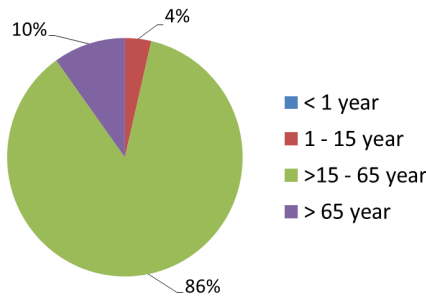
**Total laboratory confirmed cases by date(as of 19.4.2020, 10:00 PM)**

**Presentation of COVID-19 confirmed cases (as of 19.4.2020)**



SN	Type of cluster	No. of clusters	# of Cases
1	Family cluster	7	19
2	Work place cluster	3	9
3	Religious event cluster	1	59

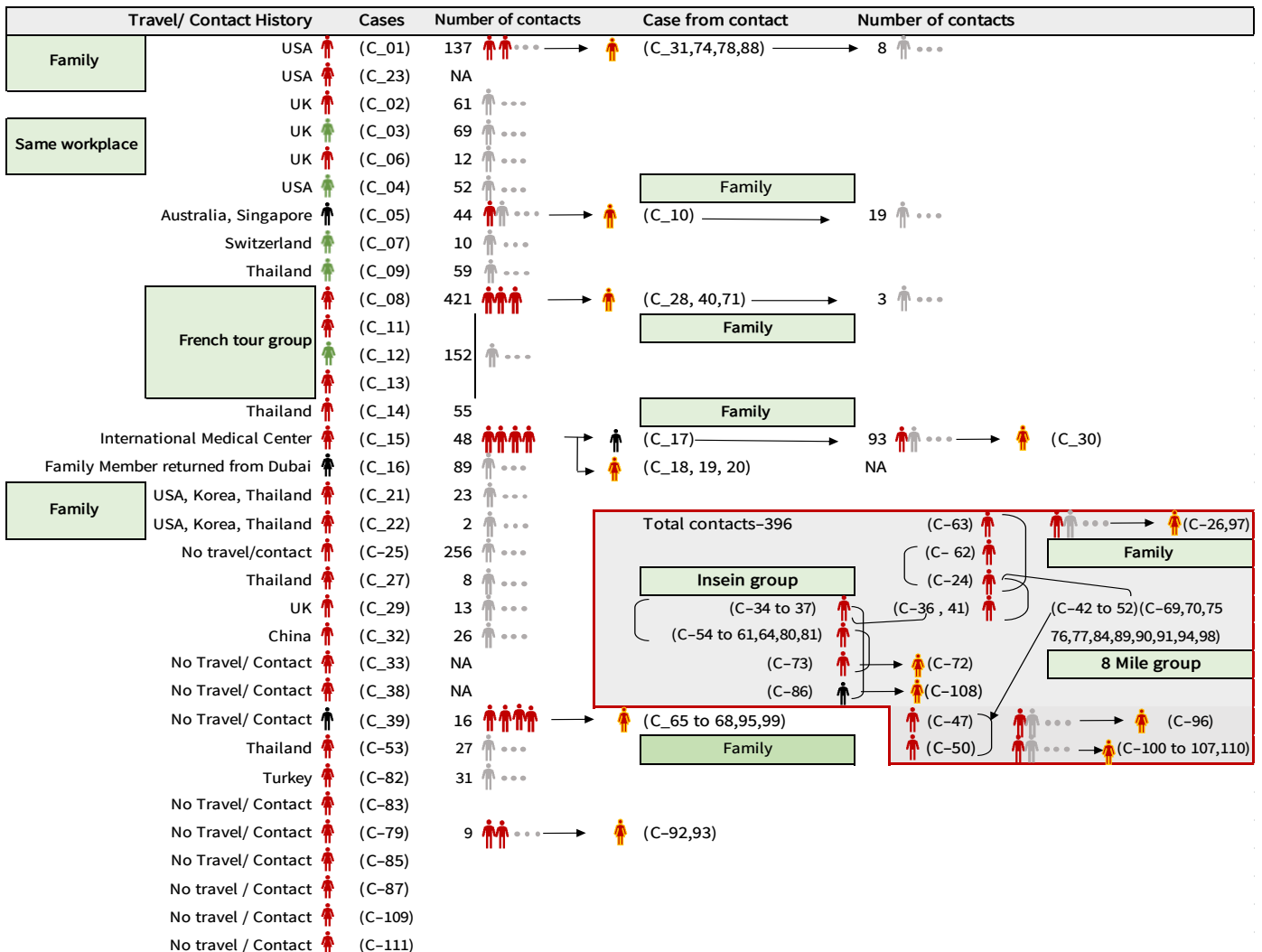
**COVID-19 confirmed cases by age group (as of 19.4.2020)**



**COVID-19 confirmed cases among PUI and Quarantine( as of 19.4.2020)**

No.	Types of isolation and Quarantine	No. of cases
1.	PUI	52
2.	Facility Quarantine	43
3.	Home Quarantine	11
4.	Hotel Quarantine	3
5.	Hospital Quarantine	2
	<b>Total</b>	<b>111</b>

**Summary of COVID-19 confirmed cases (as of 19-4-2020) ,n= 2,349**



## Summary of situation (18.4.2020 – 19.4.2020)

Type	New	Total
Suspected and Person Under Investigation (PUI)	87	1,967
Hospital Quarantine	22	210
Facility Quarantine	2,094	54,282

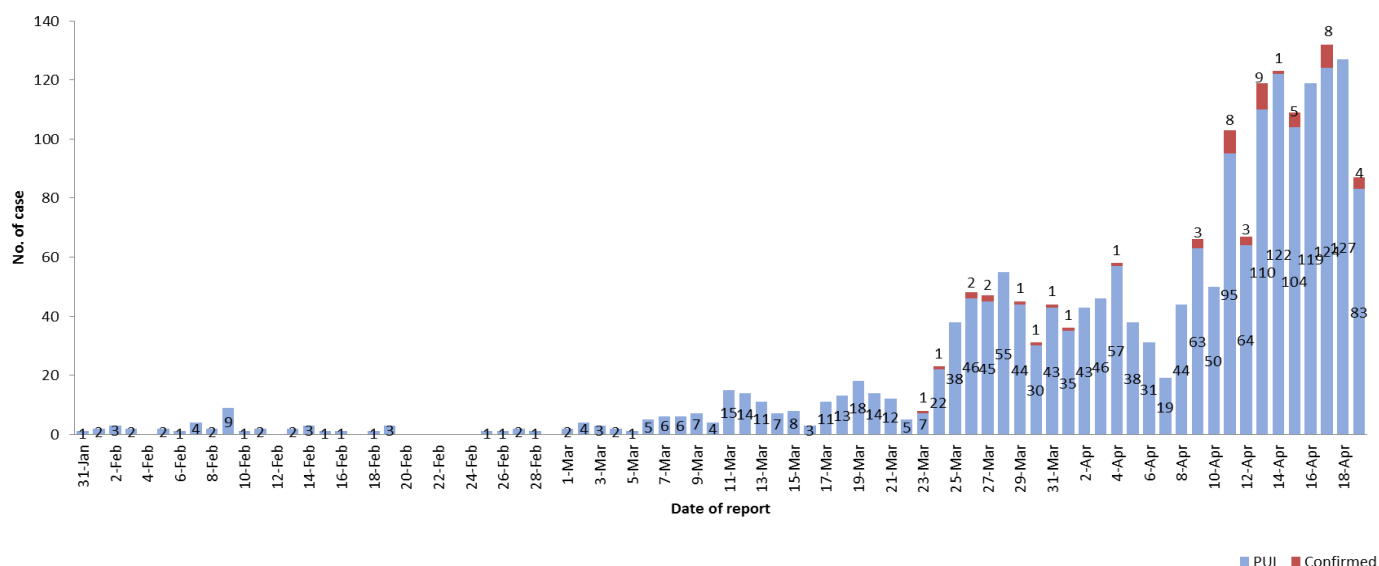
Person under Investigation (PUI) by State/Region hospitals (31.1.2020 – 19.4.2020) n=1,967

### Summary of Facility Quarantine List (as of 19.4.2020)

No.	State/Region	PUI
1.	Yangon	933
2.	Mandalay	231
3.	Bago	128
4.	Shan (N)	95
5.	Magway	75
6.	Mon	66
7.	Kayin	62
8.	Shan (E)	59
9.	Kayar	49
10.	Shan (S)	48
11.	Naypyitaw	48
12.	Ayeyarwaddy	48
13.	Sagaing	41
14.	Rakhine	32
15.	Tanintharyi	23
16.	Kachin	17
17.	Chin	12
<b>Total</b>		<b>1,967</b>

No.	State/Region	No. of facilities	Total no. of quarantine people
1.	Magway	2,694	18,242
2.	Sagaing	1,446	6,692
3.	Bago	756	5,327
4.	Kachin	333	4,688
5.	Mandalay	784	4,308
6.	Kayin	425	3,201
7.	Shan (N)	282	2,087
8.	Mon	149	1,827
9.	Shan (S)	219	1,690
10.	Yangon	22	1,361
11.	Naypyitaw	3	1,064
12.	Rakhine	144	1,015
13.	Shan (E)	22	972
14.	Ayeyarwaddy	222	899
15.	Tanintharyi	228	674
16.	Chin	22	126
17.	Kayar	18	109
<b>Total</b>		<b>7,769</b>	<b>54,282</b>

### COVID-19 laboratory confirmed cases among PUI (31.1.2020-19.4.2020), n( PUI)= 1,967, n( confirmed)=52



## Preparedness and Response to COVID-19 in Myanmar



### Definition of the term “Contact Person”

(as of 7-4-2020) (Reference – *European Center for Disease Prevention and Control*)

- ⇒ A contact of a COVID-19 case is any person who had contact with a COVID-19 case within a timeframe ranging from 48 hours before the onset of symptoms of the case to 14 days after the onset of symptoms.
- ⇒ If the case had no symptoms, a contact person is defined as someone who had contact with the case within a timeframe ranging from 48 hours before the sample which led to confirmation was taken to 14 days after the sample was taken.

### Classification of contact based on level of exposure

#### High-risk exposure (Close Contact)

A person:

- ◆ having had face-to-face contact with a COVID-19 case within one metre for more than 15 minutes
- ◆ having had physical contact with a COVID-19 case
- ◆ having unprotected direct contact with infectious secretions of a COVID-19 case (e.g. being coughed on)
- ◆ who was in a closed environment (e.g. household, classroom, meeting room, hospital waiting room, etc.) with a COVID-19 case for more than 15 minutes
- ◆ in an aircraft, sitting within two seats (in any direction) of the COVID-19 case, travel companions or persons providing care, and crew members serving in the section of the aircraft where the index case was seated (if severity of symptoms or movement of the case indicate more extensive exposure, passengers seated in the entire section or all passengers on the aircraft may be considered close contacts)
- ◆ A healthcare worker or other person providing care to a COVID-19 case, or laboratory workers handling specimens from a COVID-19 case, without recommended PPE or with a possible breach of PPE

#### Low-risk exposure

A person:

- ◆ having had face-to-face contact with a COVID-19 case within one metre for less than 15 minutes
- ◆ who was in a closed environment with a COVID-19 case for less than 15 minutes
- ◆ travelling together with a COVID-19 case in any mode of transport
- ◆ A healthcare worker or other person providing care to a COVID-19 case, or laboratory workers handling specimens from a COVID-19 case, wearing the recommended PPE