



Ministry of Health and Sports (Myanmar)

Department of Public Health

Central Epidemiology Unit

(29 July 2020)

Coronavirus Disease 2019 (COVID-19)

Situation Report - 113

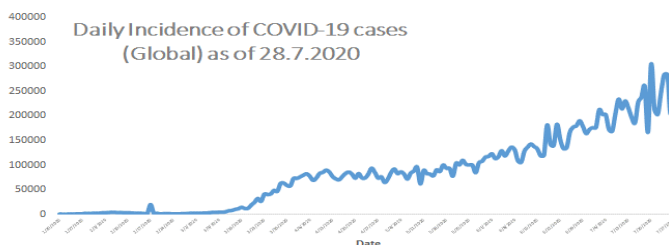
Data as reported by States and Regions by 9:30 PM MST 28 July 2020

Global Situation (WHO situation report - 190) data as of 14:30 MST 28 July 2020

Confirmed cases
16,341,920

Deaths
650,805

Case Fatality Rate
3.9 %



Myanmar Situation

Total Tested

113,498

Confirmed Cases

351

Negative

113,147

Recovered

294

83.7% of Confirmed cases

Active

51

14.5% of Confirmed cases

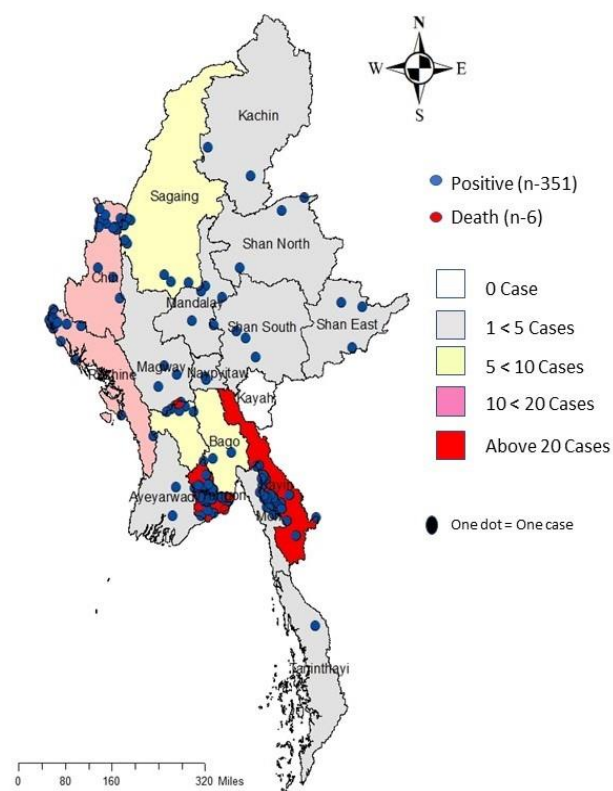
Death

6

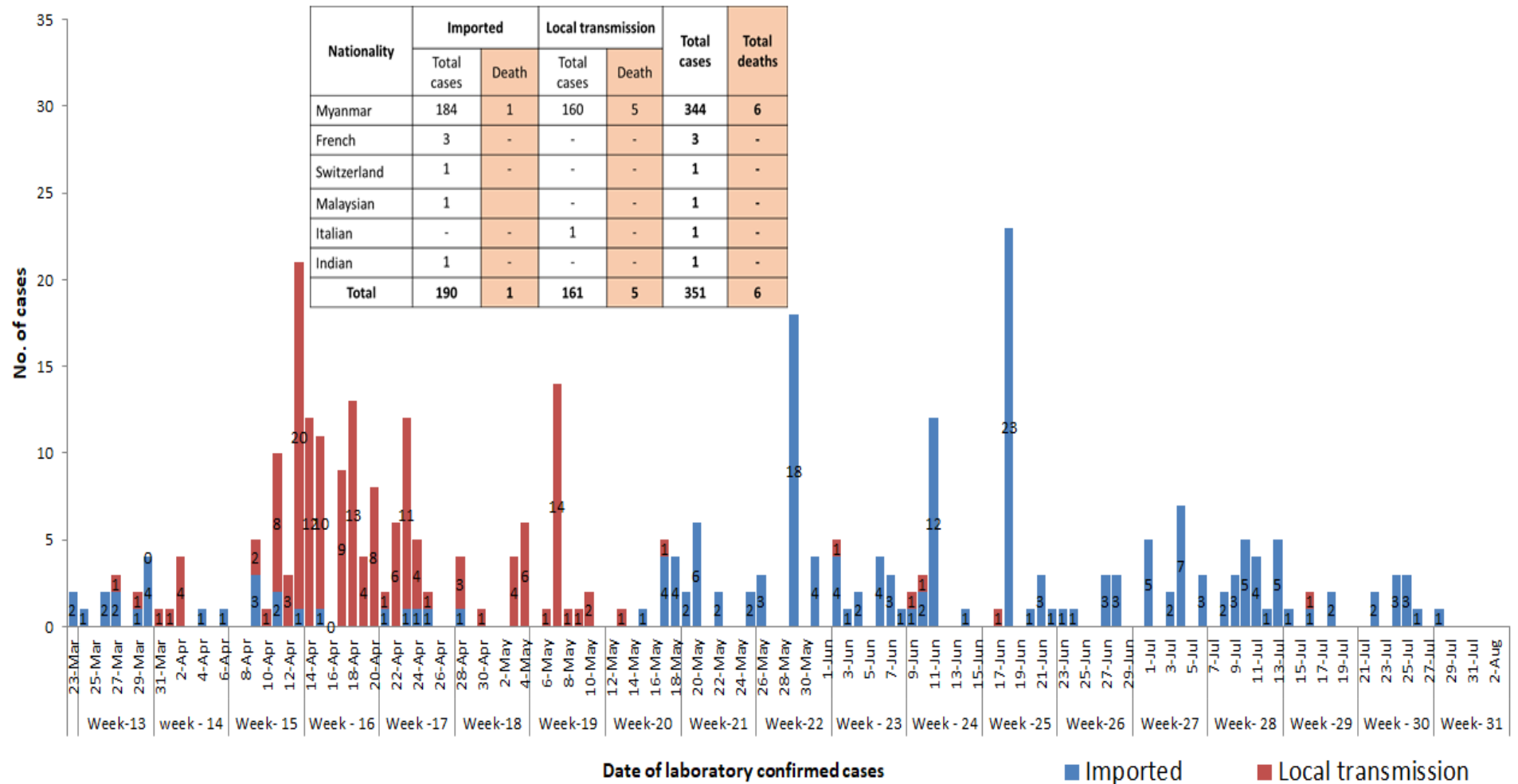
1.7% of Confirmed cases

| No | State/Region | COVID –19 Confirmed case | Recovered | Deaths |
|--------------|--------------|--------------------------|-------------------|----------|
| 1 | Yangon | 248 | 202 | 5 |
| 2 | Kayin | 29(1 New) | 24 | - |
| 3 | Rakhine | 16 | 14(1 New) | - |
| 4 | Chin | 14 | 11 | - |
| 5 | Sagaing | 9 | 9 | - |
| 6 | Bago | 9 | 8 | 1 |
| 7 | Shan (South) | 4 | 4 | - |
| 8 | Mandalay | 4 | 4 | - |
| 9 | Shan (East) | 3 | 3 | - |
| 10 | Shan (North) | 3 | 3 | - |
| 11 | Magway | 3 | 3 | - |
| 12 | Naypyitaw | 2 | 2 | - |
| 13 | Ayeyarwaddy | 2 | 2 | - |
| 14 | Kachin | 2 | 2 | - |
| 15 | Mon | 2 | 2 | - |
| 16 | Thanintharyi | 1 | 1 | - |
| 17 | Kayah | - | - | - |
| Total | | 351(1 New) | 294(1 New) | 6 |

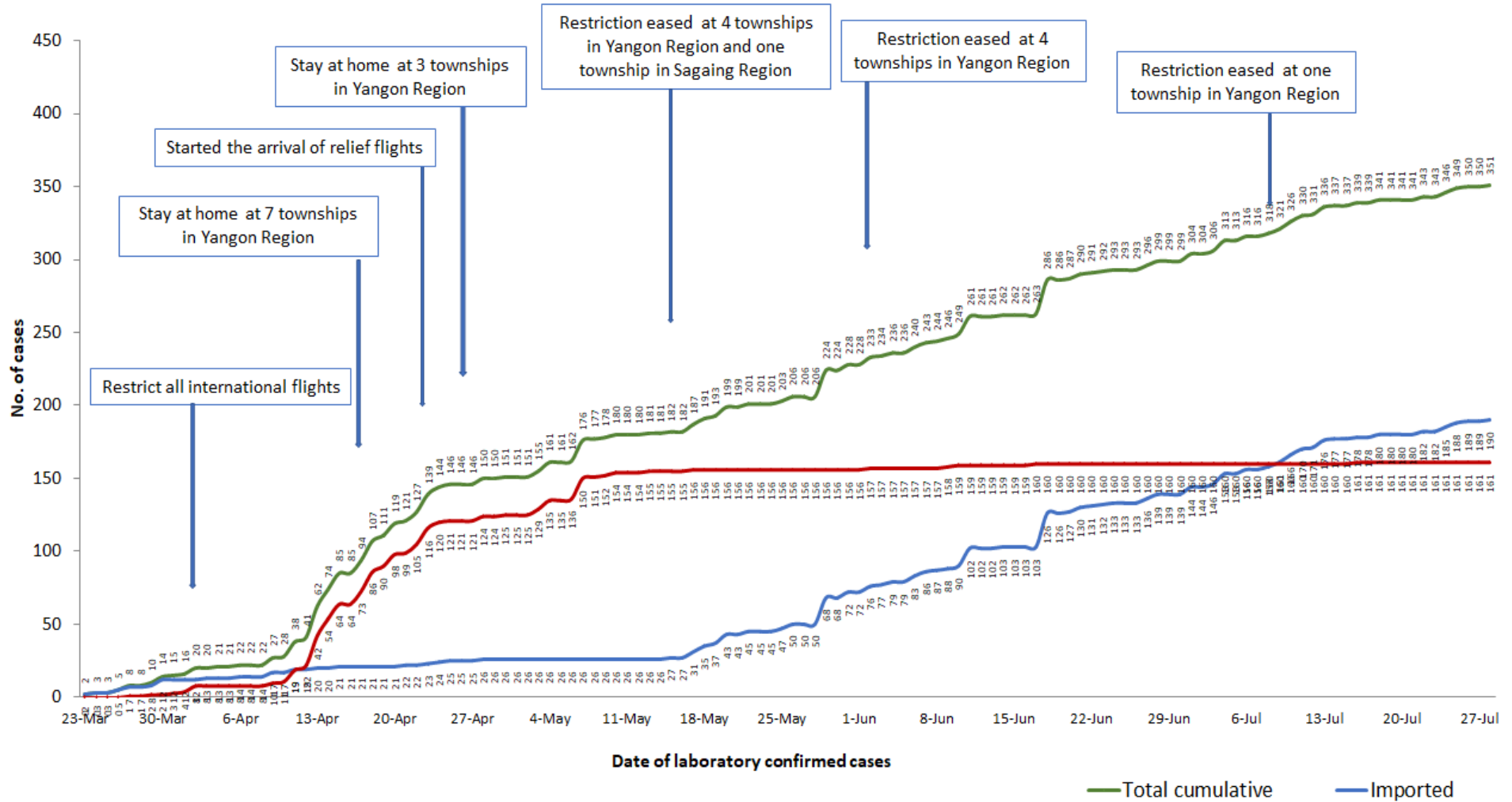
Map showing COVID-19 laboratory confirmed cases



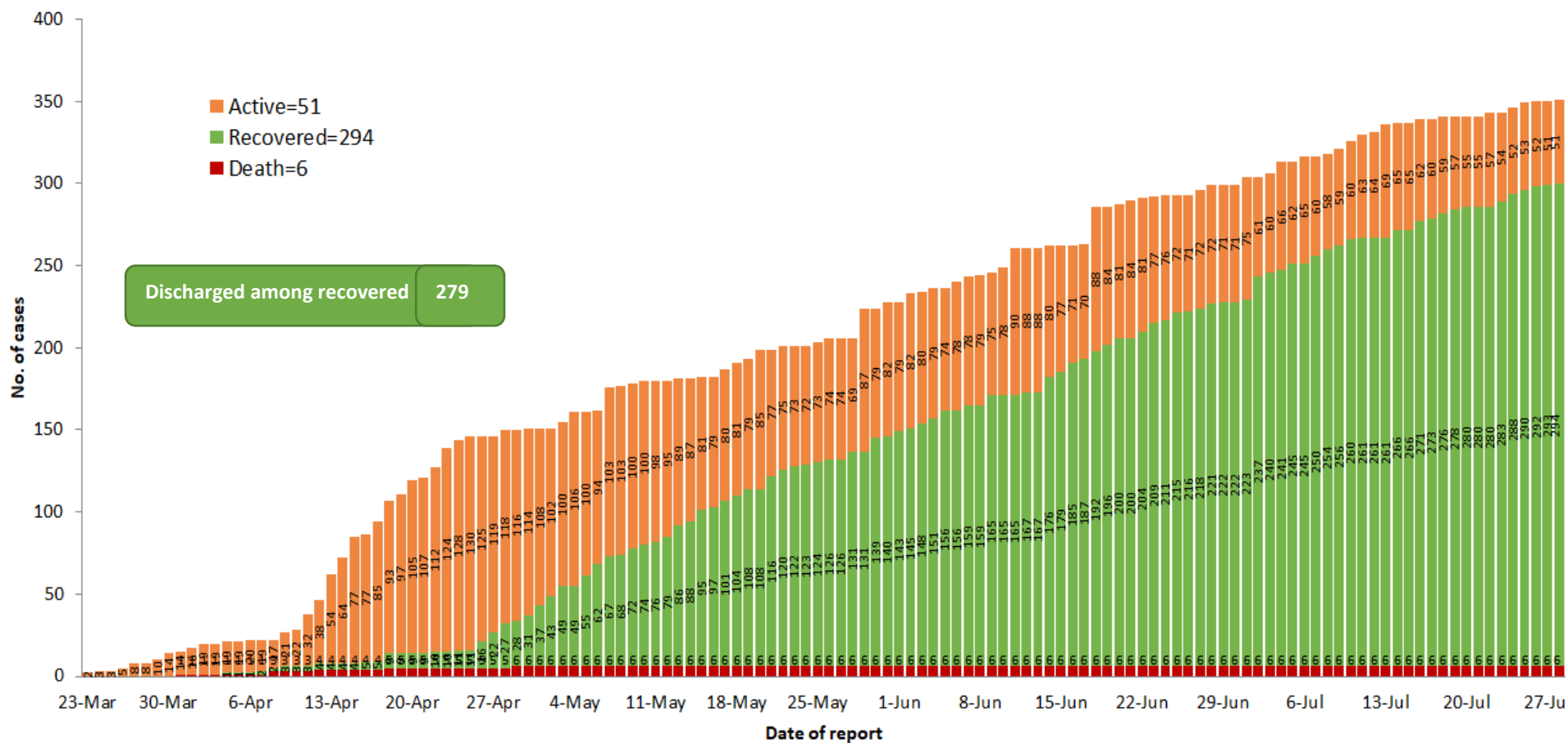
COVID-19 confirmed cases by types of transmissions (as of 28.7.2020, 9:30 pm) n=351



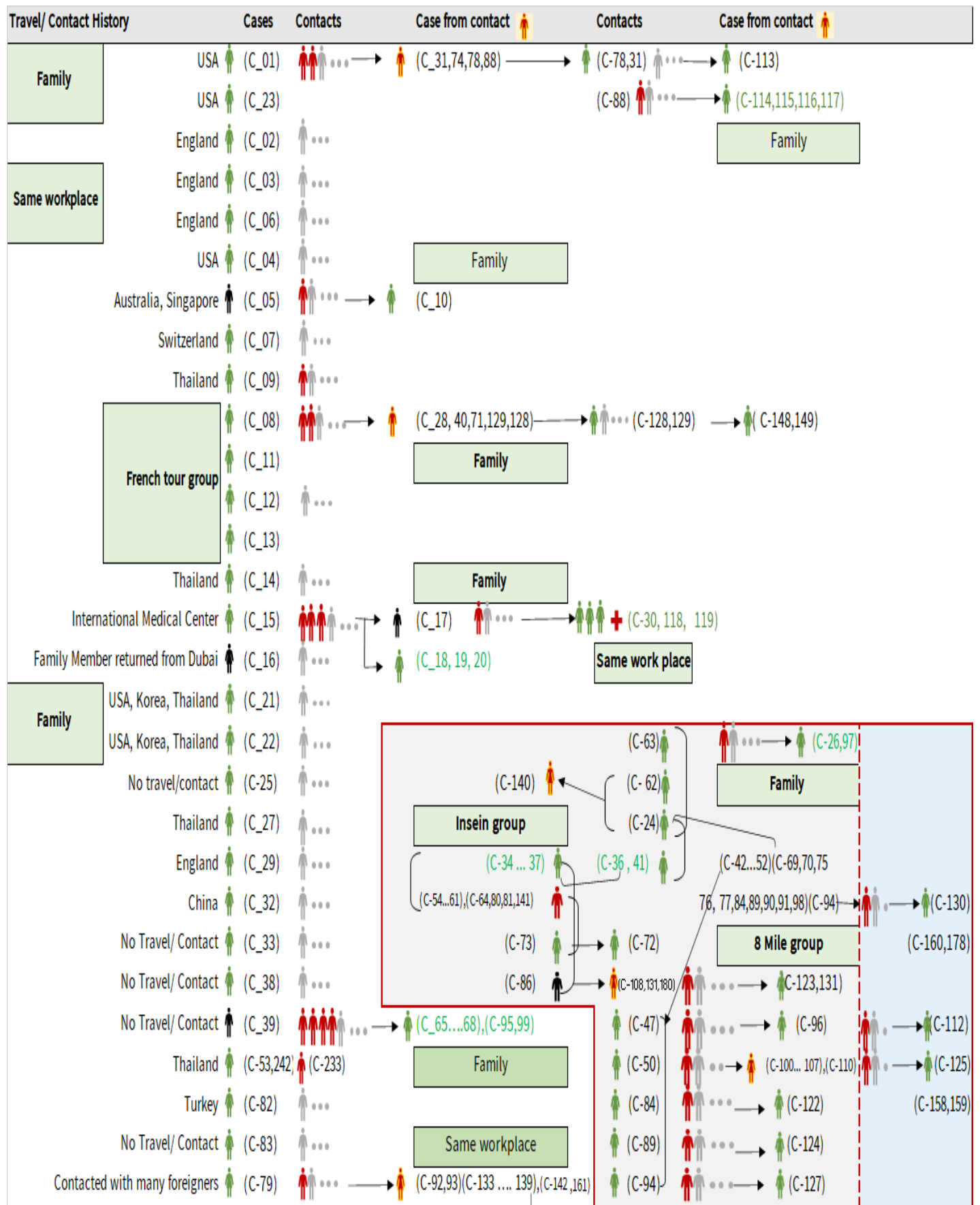
Total laboratory confirmed cases by date (as of 28.7.2020, 9:30 pm), n= 351



Cumulative Number of active confirmed cases, recovered and deaths (23.3.2020 – 28.7.2020), n (cumulative)=351



Summary of COVID-19 confirmed cases (as of 28.7.2020), n (contacts)= 5,780



Summary of COVID-19 confirmed cases (as of 28.7.2020), n (contacts)= 5,780

| Travel/ Contact History | Cases | Contacts | Case from contact | Contacts | Case from contact |
|--------------------------------------|---|---|--|-----------------------------|---|
| No Travel/ Contact | (C-85) | ... | | | (C-110) |
| No travel / Contact | (C-87) | ... | → (C-126) | | (C-28,40,42,43,44,45,46,48,49,51,52) |
| No travel / Contact | (C-109) | ... | (C-139) → (C-146) | | (C-54,55,56,57,58,60,61,63,64,69,70) |
| No travel / Contact | (C-111) | ... | (C-133,134,142) → (C-147) | | (C-71,74,75,76,77,80,81,88,90,91,92,93) |
| No travel/Contact | (C-120) | ... | | | (C-98,100,101,102,103,104,105,106,107,108) |
| England | (C-327) | (C-121,302,303,317) | | | (C-133,134,135,136,137,138,139,140,141,142) |
| No travel/Contact | (C-132) | ... | | | (C-151,152,153,154,157,158,159,160,161) |
| Dubai/Thailand | (C-143) | ... | | | (C-164,165,167,168,170,171,172,174) |
| No travel/Contact | (C-144) | ... | | | (C-178,184,189,191,193,205,207,216,217,218) |
| India | (C-145,204,209,210,212,213,215,220,221,223,224,229,225,227,228,252,255,259,296,299,305,306,310) | | | | (C-226,233,234,235,237,246,253,258) |
| China | (C-150,230) | | | Household | |
| Contact with religious event cluster | (C-162) | ... | → (C-151,152,153,154,157) → (C-165 177) | | (C-166,169,173,175,176,177) |
| No travel/contact | (C-155) | ... | → (C-163,164) (163) | (C-177) → (C-179) → (C-181) | |
| No travel/contact | (C-156) | ... | | | |
| No travel/contact | (C-183) | ... | | | |
| Malaysia | (C-184,189,273,280,351) | (C-182,185,186,191,188,190,187,200,201,232,275,282) | | | |
| UAE | (C-300,301,315,316,337,340) | (C-193,192,194,195,196,197,198,199,301,314) | | | |
| Italy | (C-243,202) | | | | |
| No travel/Contact | (C-231) | | | | |
| Bangladesh | (C-234,244,247,250,262,308,309,310,326,334,348) | (C-244,245,247,248,250,262,291,292,293,325) | | | |
| No travel/contact | (C-245) | ... | | | |
| No travel/contact | (C-249) | | | | |
| No travel/contact | (C-263) | ... | | | |
| Thailand | (C-269,279,332,333,335,346,349) | (C-264,265,266,267,268,270,271,272,273,274,276,277,278,280,281,283,284,285,286,287,294,304,312,336,338) | | | |
| Quata | (C-288) | (C-289,290) | | | |
| India | (C-203,205.....214,216...219,221.... 229,....240,241,246,251,253,254...258,260,261,295,297,298,307,322,323,324,344,345) | (C-328,329,330) | | | |
| Lao | (C-311) | ... | | | |
| Singapore | (C-313) | ... | | | |
| Philippines | (C-319,321,342,343) | (C-320) | | | |
| USA | (C-331,347,350) | ... | | | |
| No travel/contact | (C-339) | ... | | | |

| Summary of current situation | | |
|--|------------------------------|-------------------------|
| Type | New (27.7.2020-28.7.2020) | Total (on 28.7.2020) |
| Suspected and Person Under Investigation (PUI) | 28 | 154 |
| Hospital Quarantine | 10 | 43 |
| Facility Quarantine | 713 | 20,458 |

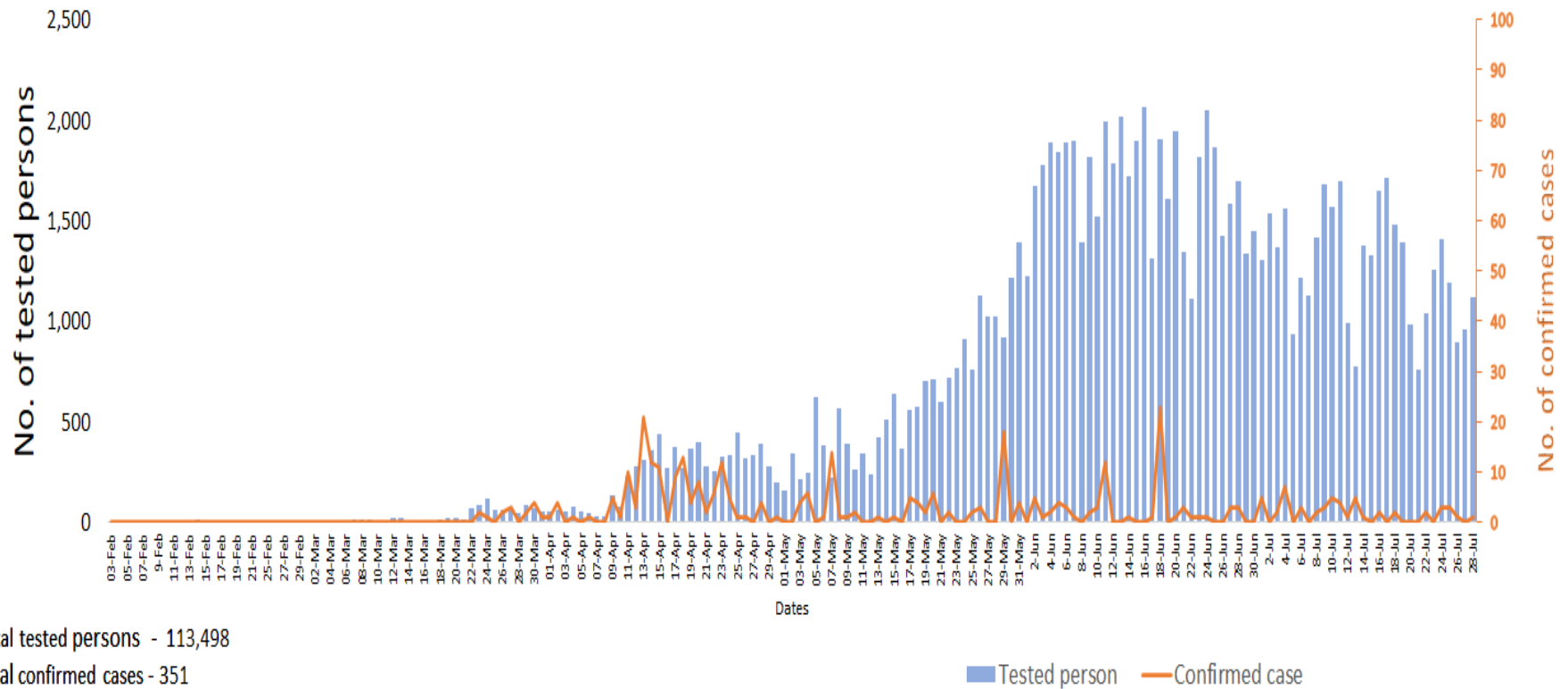
Person under Investigation (PUI) by State/Region hospitals (31.1.2020 – 28.7.2020) n= 6,743

| No. | State/Region | PUI |
|-------|--------------|-------|
| 1 | Yangon | 3382 |
| 2 | Mandalay | 1381 |
| 3 | Kayin | 297 |
| 4 | Mon | 278 |
| 5 | Shan (N) | 233 |
| 6 | Magway | 213 |
| 7 | Bago | 180 |
| 8 | Shan (E) | 125 |
| 9 | Shan (S) | 104 |
| 10 | Ayeyarwaddy | 102 |
| 11 | Sagaing | 90 |
| 12 | Kayah | 81 |
| 13 | Thanintharyi | 73 |
| 14 | Rakhine | 69 |
| 15 | Naypyitaw | 64 |
| 16 | Kachin | 42 |
| 17 | Chin | 29 |
| Total | | 6,743 |

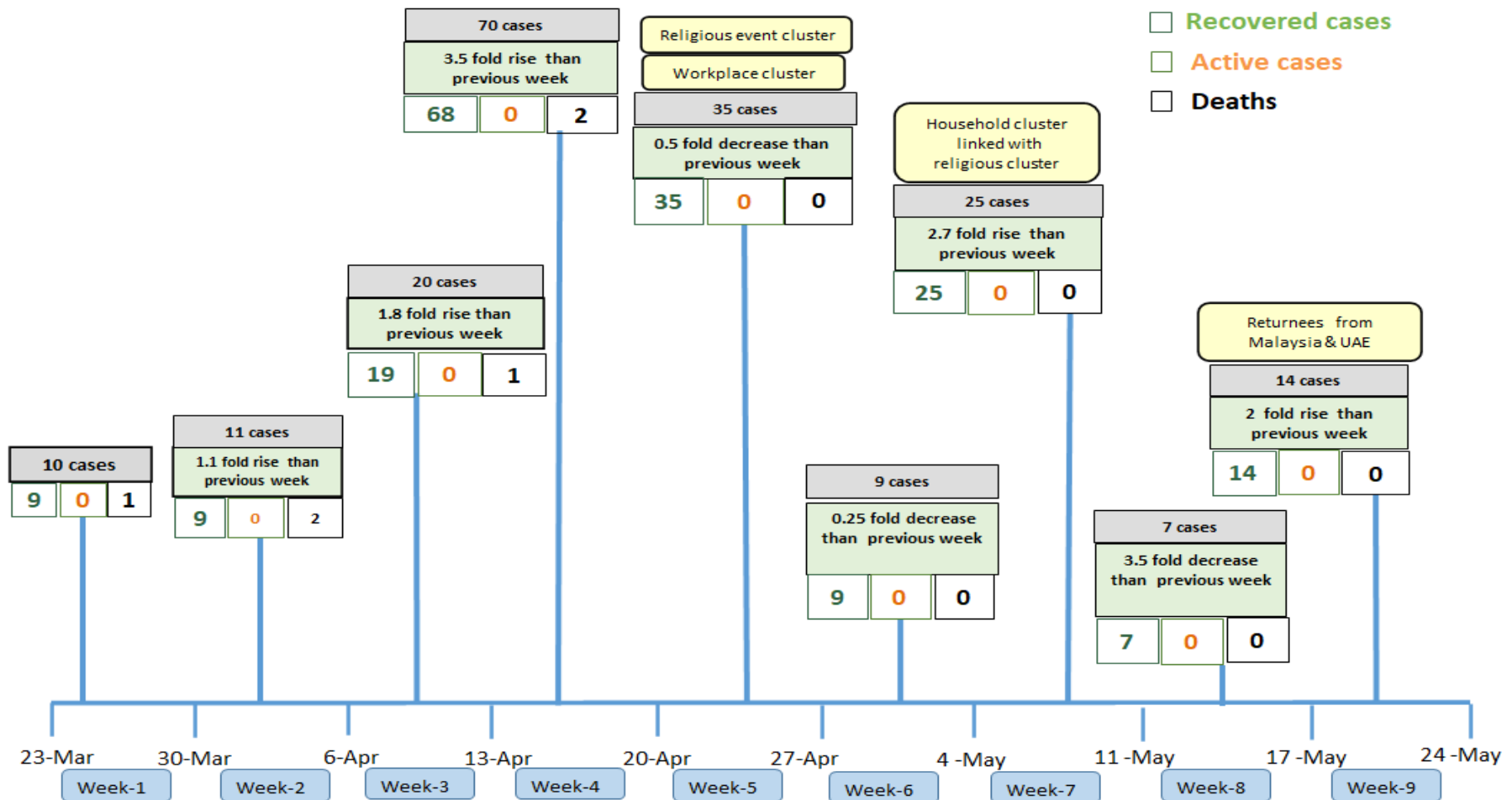
No. of Facility Quarantine sites and Quarantined people on 28.7.2020

| No. | State/Region | No. of facilities | Total no. of quarantine |
|-------|--------------|-------------------|-------------------------|
| 1 | Yangon | 55 | 3,119 |
| 2 | Kayin | 386 | 2,770 |
| 3 | Mon | 294 | 2,764 |
| 4 | Bago | 250 | 2,623 |
| 5 | Tanintharyi | 189 | 1,823 |
| 6 | Magway | 304 | 1,638 |
| 7 | Sagaing | 173 | 1,036 |
| 8 | Mandalay | 68 | 1,008 |
| 9 | Rakhine | 257 | 805 |
| 10 | Shan South | 95 | 701 |
| 11 | Ayeyarwaddy | 168 | 692 |
| 12 | Kachin | 425 | 659 |
| 13 | Naypyitaw | 2 | 311 |
| 14 | Shan North | 268 | 243 |
| 15 | Kayah | 18 | 116 |
| 16 | Chin | 15 | 94 |
| 17 | Shan East | 9 | 56 |
| Total | | 2,976 | 20,458 |

COVID-19 confirmed cases among tested by date (as of 28.7.2020)

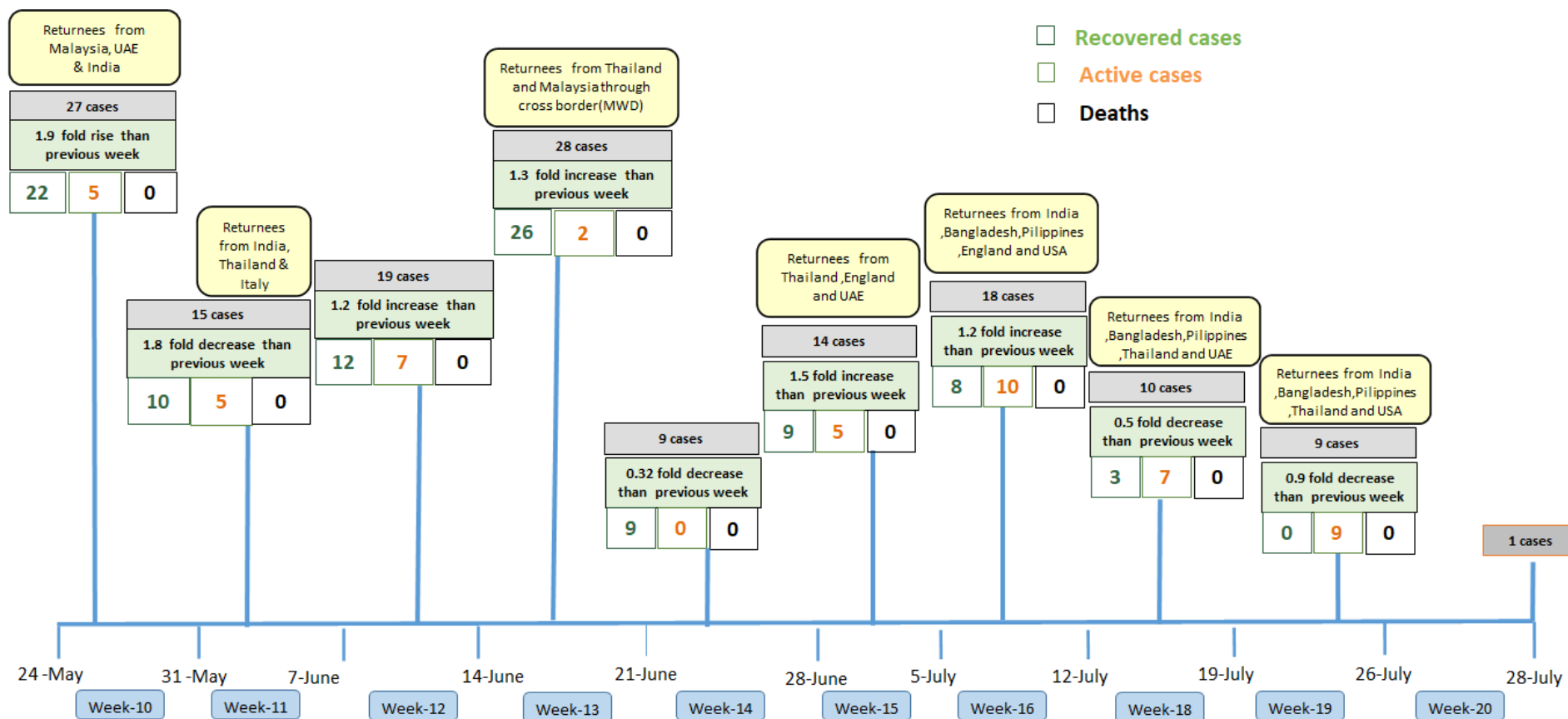


Summary of new confirmed cases detection after first two cases (as of 28.7.2020)



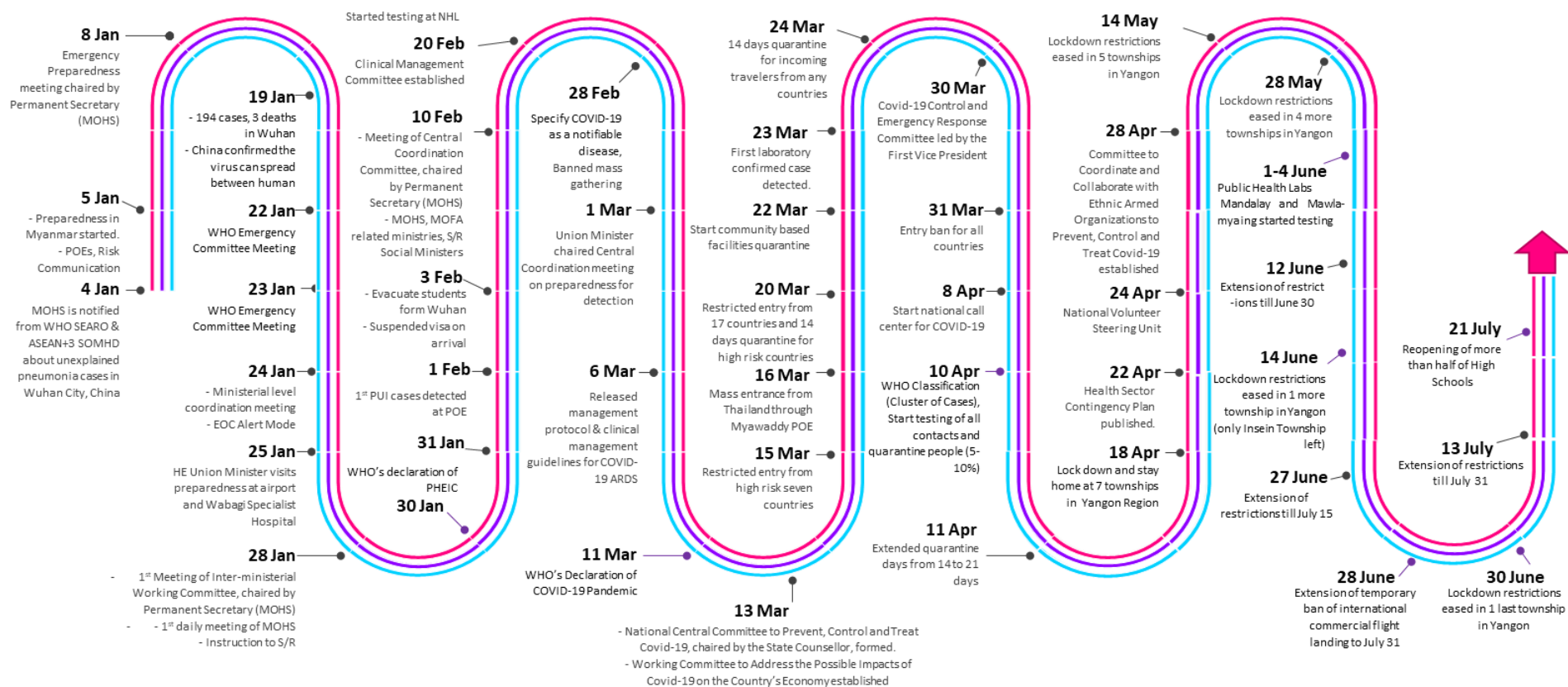
- Confirmed cases were detected as a peak in the 4th week after first confirmed cases due to the religious event cluster.
- Confirmed cases were decreased but still raised than the first 3 weeks due to the religious event cluster and workplace cluster.
- There were an increased in numbers of cases in the 7th week after the first two cases due to the household cluster linked with a religious cluster.
- Confirmed cases were detected by a nearly two-fold rise in the 9th and 10th weeks after the first two cases because of returnees coming back by relief flights.

Summary of new confirmed cases detection after first two cases (as of 28.7.2020)



- Confirmed cases were detected as a peak in the 4th week after first confirmed cases due to the religious event cluster.
- Confirmed cases were decreased but still raised than the first 3 weeks due to the religious event cluster and workplace cluster.
- There were an increased in numbers of cases in the 7th week after the first two cases due to the household cluster linked with a religious cluster.
- Confirmed cases were detected by a nearly two-fold rise in the 9th and 10th weeks after the first two cases because of returnees coming back by relief flights.

Timeline of Preparedness and Response to COVID-19 in Myanmar (as of 28.7.2020)



Hotline Number — 0673 420 268

Data source - CEU, DMS, NHL, PHL (MDY and MLM), DMR, DSGH, State and Region Health Departments