



Ministry of Health and Sports (Myanmar)

Department of Public Health

Central Epidemiology Unit

(1 June 2020)

Coronavirus Disease 2019 (COVID-19)

Situation Report - 55

Data as reported by States and Regions by 03:30 AM MST 1 June 2020

Global Situation
(WHO situation report - 132)
data as of 14:30 MST 31 May 2020

Confirmed cases
5,934,936

Deaths
367,166

Case Fatality Rate
6.2 %

Daily incidence of COVID-19 (Global)
(data as of 31-5-2020)



Myanmar Situation

Total tested
27,077

Confirmed cases
228

Negative
26,849

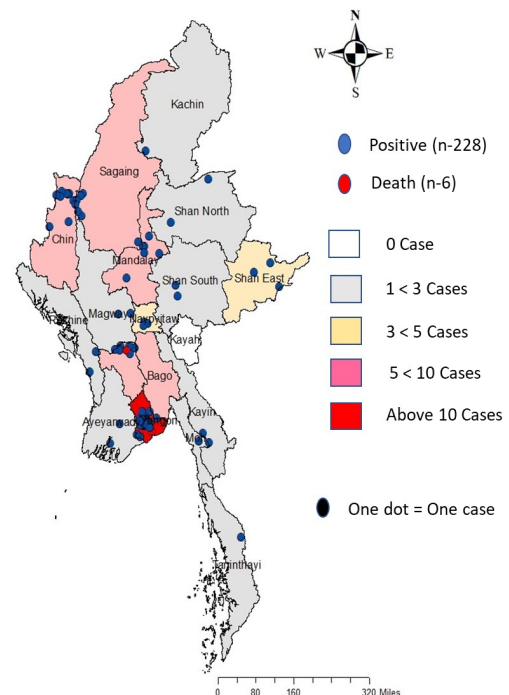
Recovered
138
60.5 % of confirmed cases

Active
84
36.8% of confirmed cases

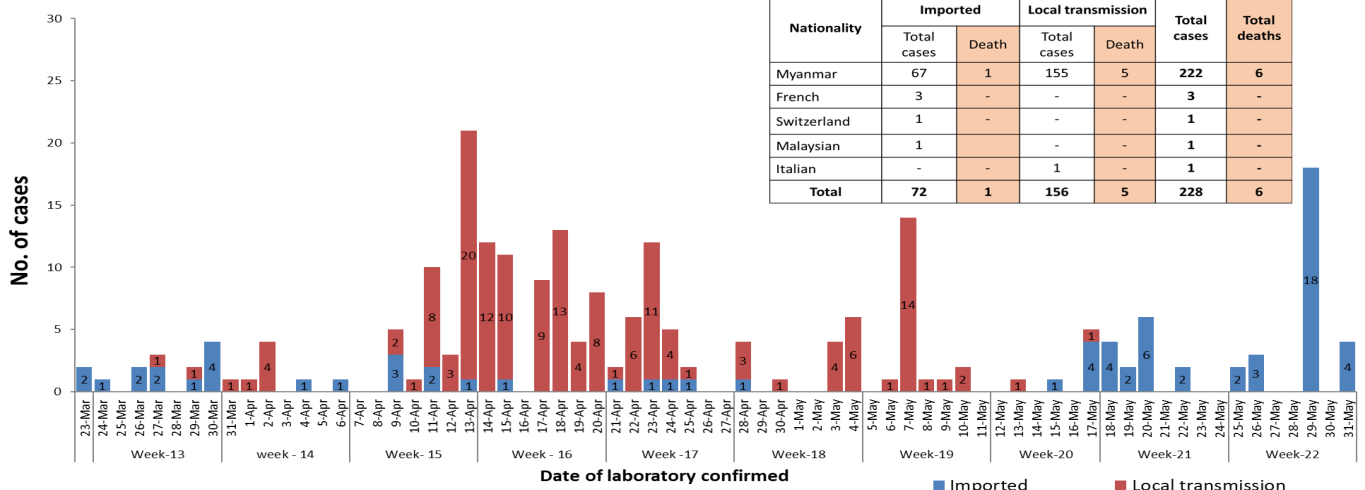
Death
6
2.6% of confirmed cases

No.	State/Region	COVID -19 Confirmed case	Recovered	Deaths
1.	Yangon	182 (4 new)	107	5
2.	Chin	9	3	-
3.	Bago	7	6	1
4.	Sagaing	7	7	-
5.	Shan(East)	3	3	-
6.	Mandalay	3	3	-
7.	Shan(South)	2	2	-
8.	Shan(North)	2	2	-
9.	Naypyitaw	2	2	-
10.	Kayin	2	-	-
11.	Magway	2	1	-
12.	Rakhine	2	-	-
13.	Ayeyarwaddy	2	-	-
14.	Mon	1	1	-
15.	Kachin	1	1	-
16.	Thanintharyi	1	-	-
17.	Kayah	-	-	-
Total		228 (4 new)	138	6

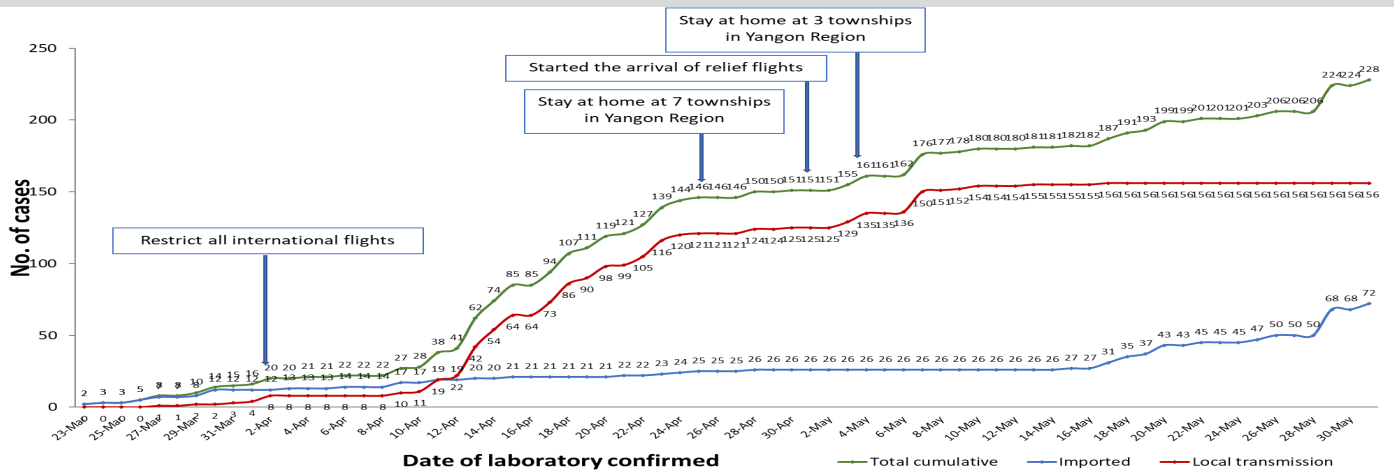
Map showing COVID-19 laboratory confirmed cases



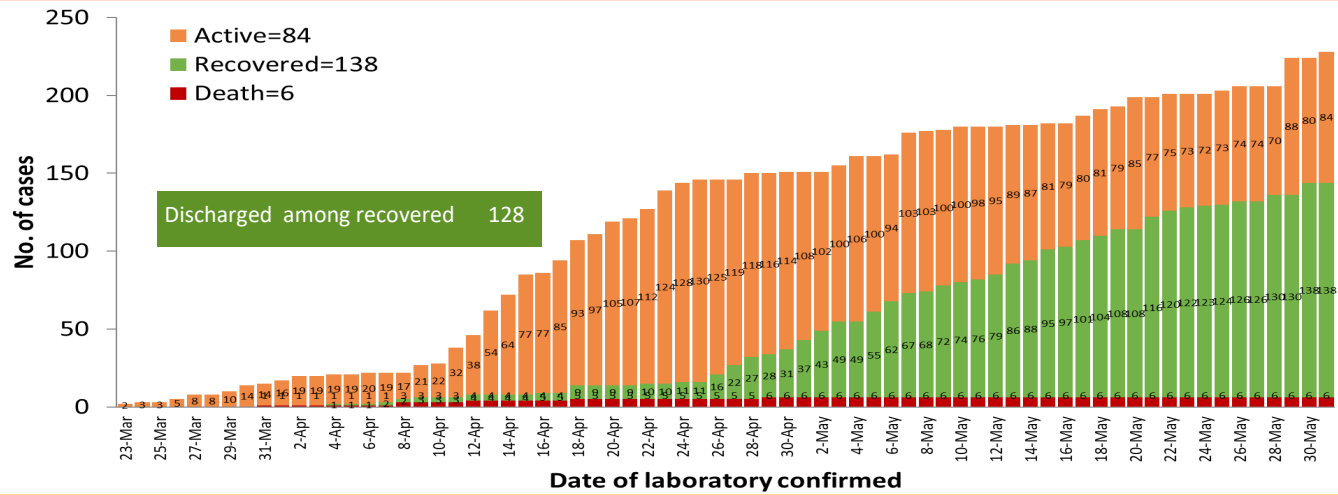
COVID-19 confirmed cases by types of transmissions (as of 1-6-2020,03:00 am) n=228



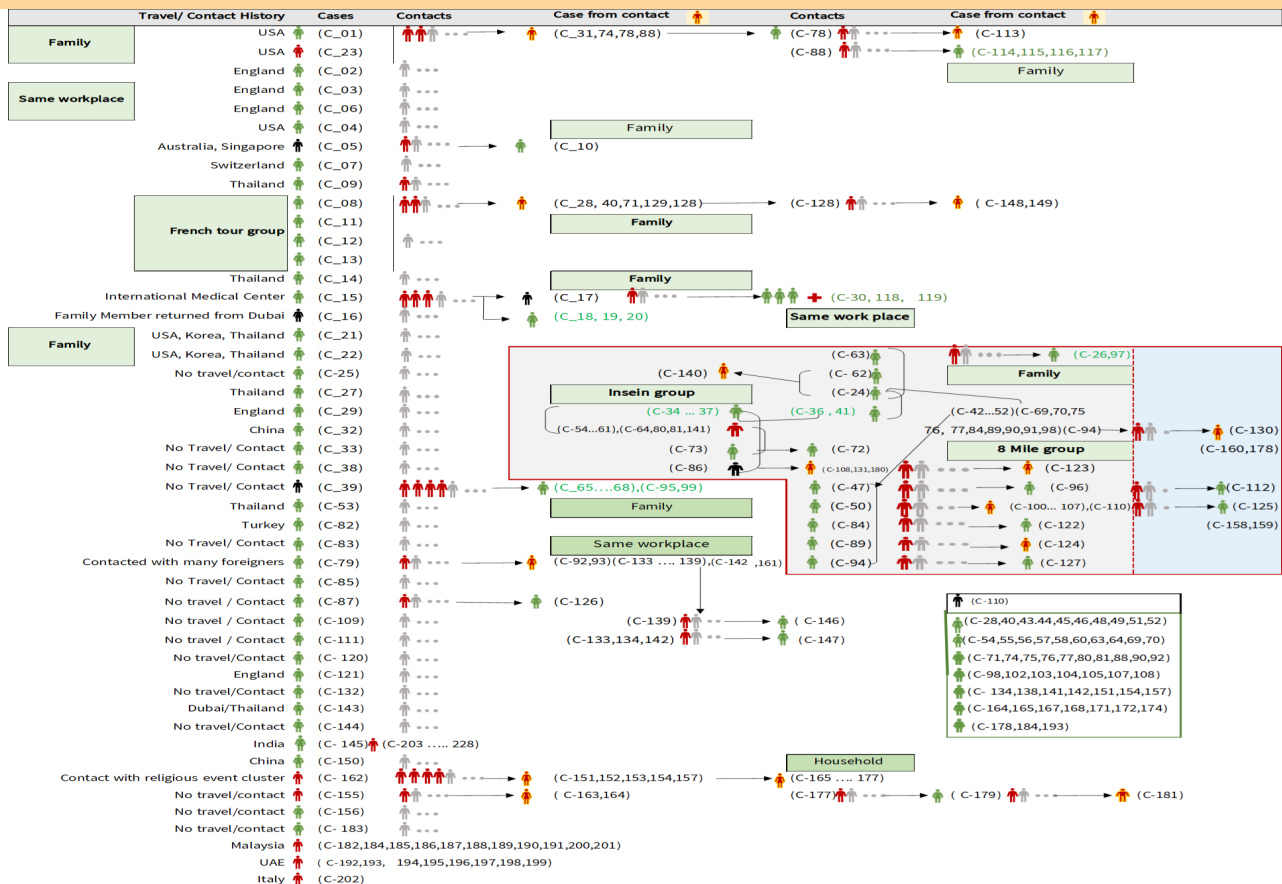
Total laboratory confirmed cases by date (as of 1.6.2020, 03:00 am), n= 228



Cumulative Number of active confirmed cases, recovered and death (23.3.2020–1.6.2020), n=228



Summary of COVID-19 confirmed cases (as of 1-6-2020), n (contacts)= 4,767

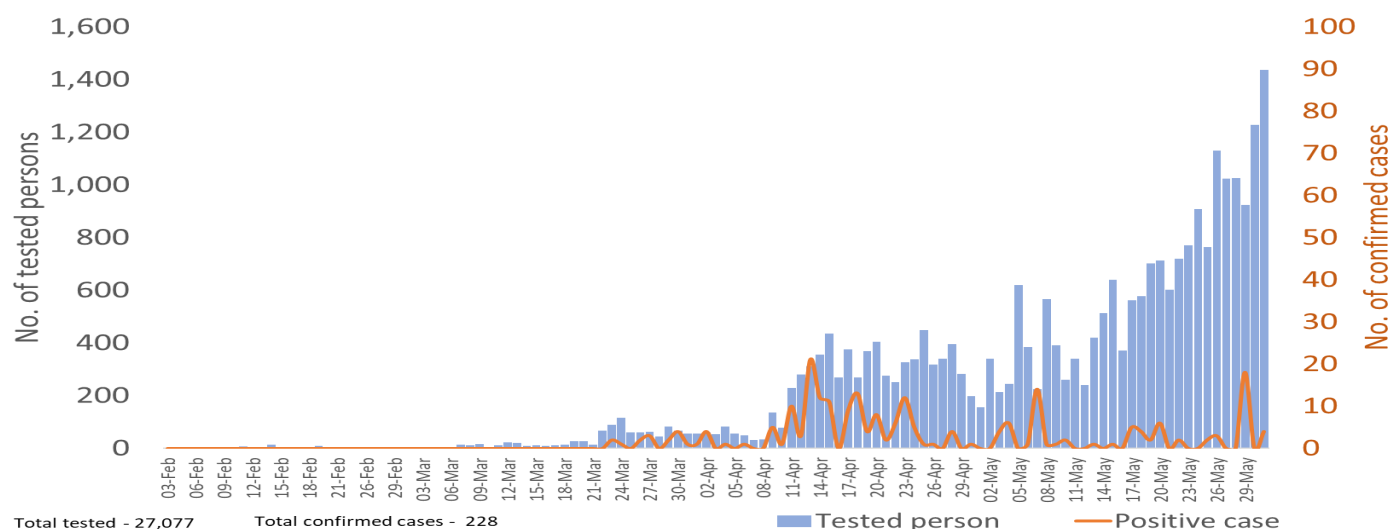


Summary of current situation

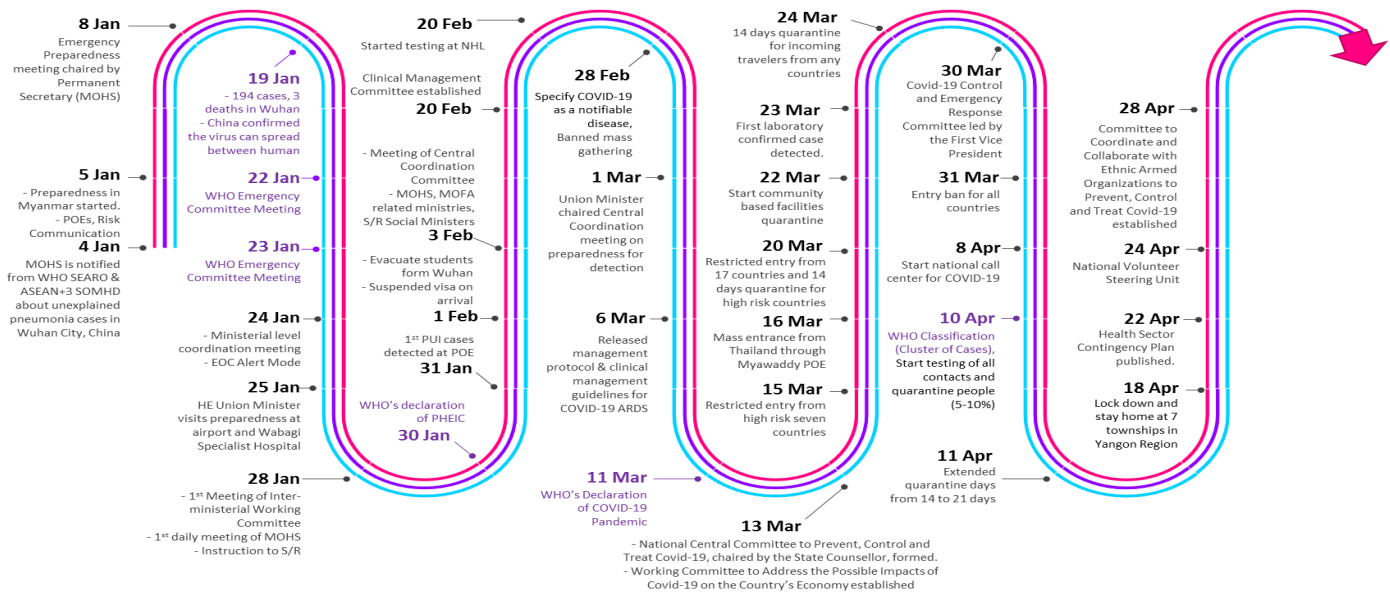
Type	New (30.5.2020-31.5.2020)	Total (on 31.5.2020)
Suspected and Person Under Investigation (PUI)	37	277
Hospital Quarantine	6	105
Facility Quarantine	2,745	50,277

Person under Investigation (PUI) by State/Region hospitals (31.1.2020 – 31.5.2020) n= 4,993			No. of Facility Quarantine sites and Quarantined people on 31.5.2020				
No.	State/Region	PUI	No.	State/Region	No. of facilities	Total no. of quarantine people	
1.	Yangon	2,593	1.	Magway	2,863	11,676	
2.	Mandalay	897		2.	Sagaing	1,856	5,501
3.	Bago	187		3.	Kachin	675	5,426
4.	Shan (N)	171		4.	Bago	503	4,357
5.	Tanintharyi	168		5.	Mandalay	729	4,335
6.	Kayin	168		6.	Rakhine	737	3,693
7.	Shan (S)	165		7.	Ayeyarwaddy	945	3,147
8.	Mon	102		8.	Shan North	437	2,250
9	Rakhine	99		9	Yangon	60	2,245
10.	Shan (E)	86		10.	Kayin	217	1,875
11.	Ayeyarwaddy	74		11.	Tanintharyi	189	1,274
12.	Magway	70		12.	Mon	26	1,258
13.	Sagaing	60		13.	Shan South	113	1,241
14.	Kayah	54		14.	Naypyitaw	19	1043
15.	Chin	50		15.	Shan East	11	476
16.	Naypyitaw	27		16.	Chin	48	286
17.	Kachin	22		17.	Kayah	18	194
Total		4,993	Total		9,446	50,277	

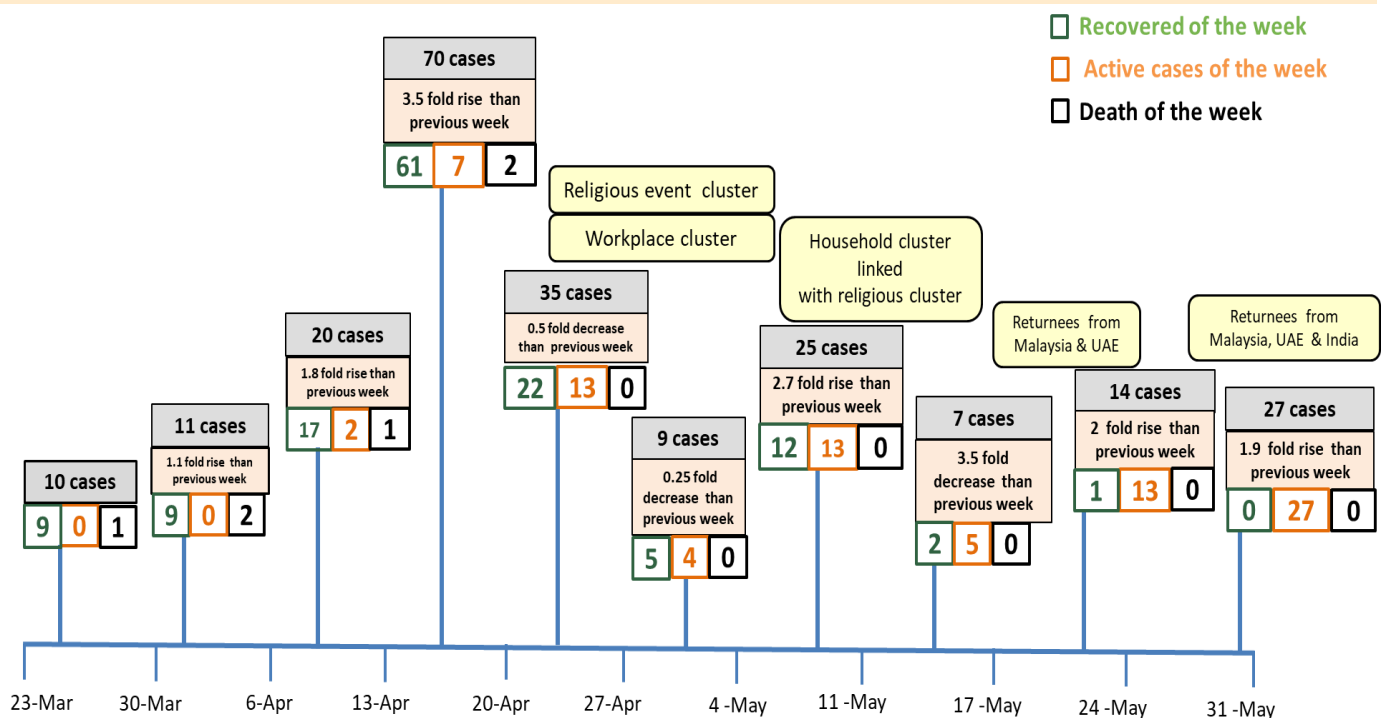
COVID-19 confirmed cases among tested by date (as of 31.5.2020)



Timeline of Preparedness and Response to COVID-19 in Myanmar (as of 1.6.2020)



Summary of new confirmed cases detection after first two cases (as of 31.5.2020)



- Confirmed cases were detected as peak in the 4th week after first confirmed cases due to religious event cluster.
- Confirmed cases were decreased but still raised than the first 3 weeks due to religious event cluster and workplace cluster.
- There were an increased in numbers of cases in the 7th week after the first two cases due to household cluster linked with religious cluster.
- Confirmed cases were detected by nearly two fold rise in the 9th and 10th weeks after first two cases because of returnees coming back by relief flights.